

# ETVC 16/20

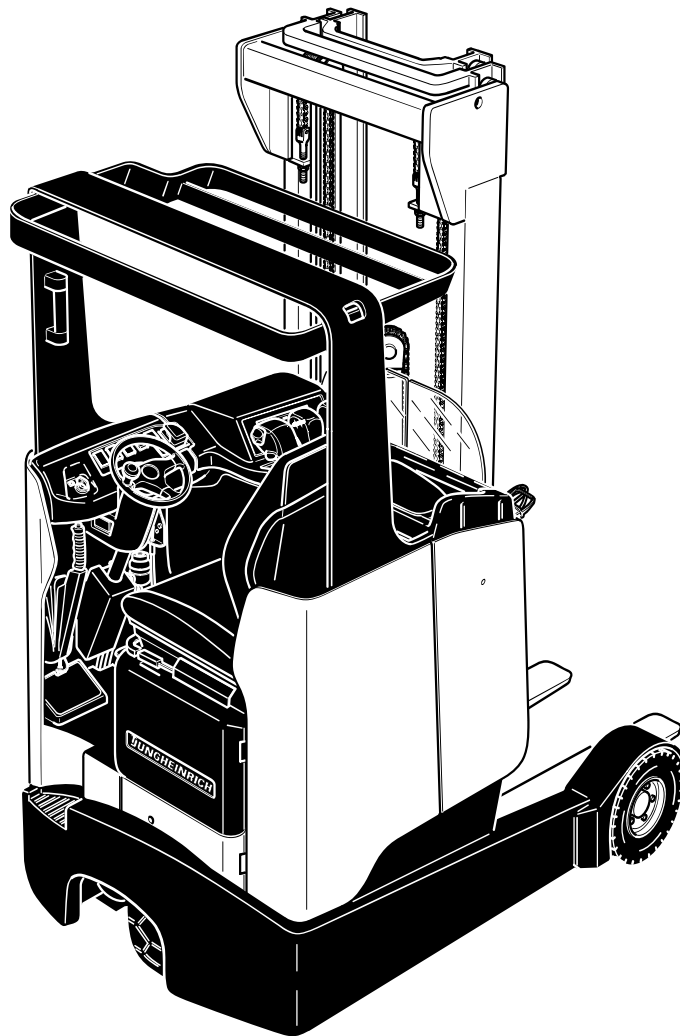
05.99-

Operating instructions

GB

50052734

12.07



**JUNGHEINRICH**

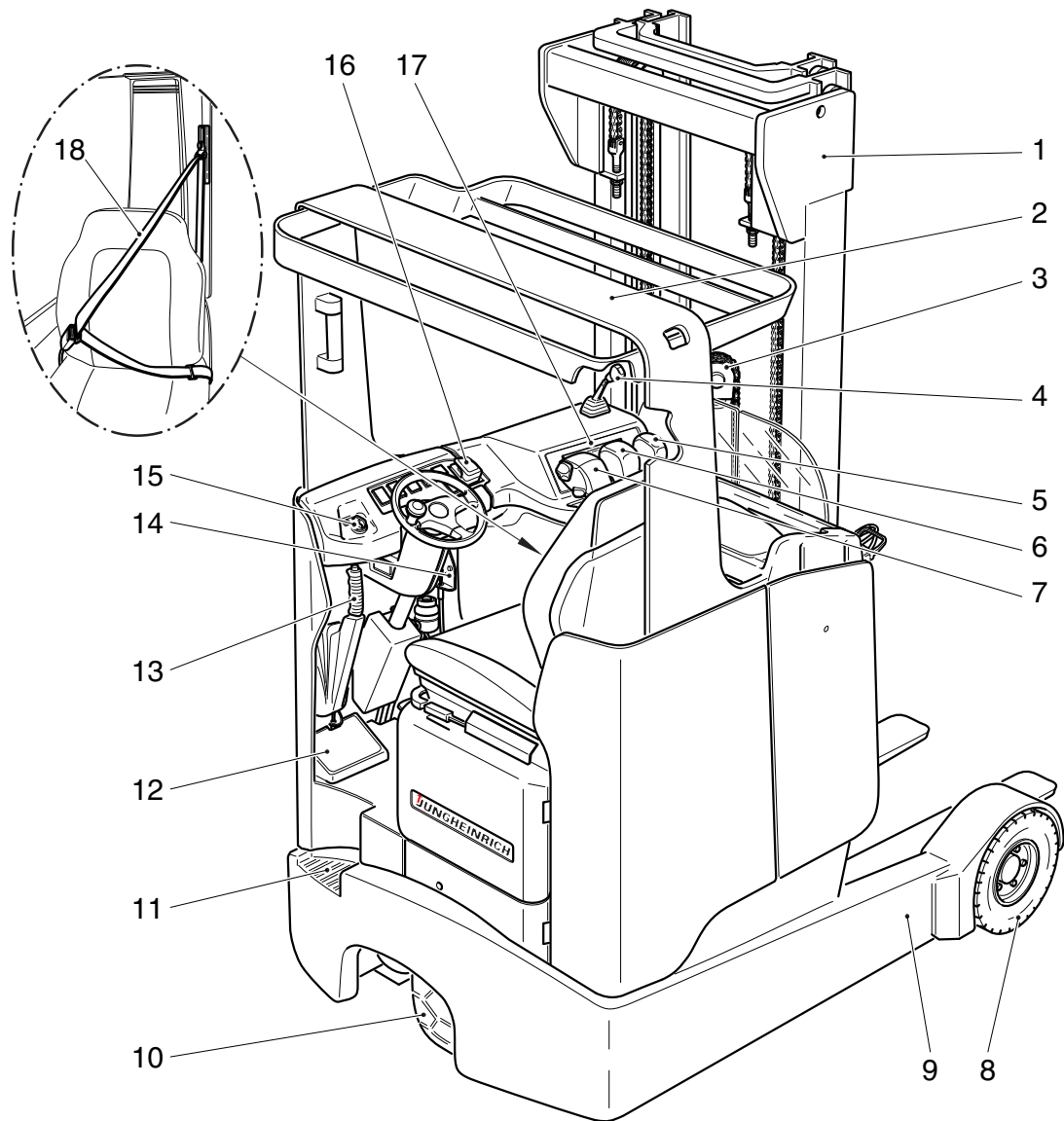
CLICK HERE TO **DOWNLOAD** THE COMPLETE MANUAL

- Thank you very much for reading the preview of the manual.
- You can download the complete manual from: [www.heydownloads.com](http://www.heydownloads.com) by clicking the link below



- Please note: If there is no response to CLICKING the link, please download this PDF first and then click on it.

CLICK HERE TO **DOWNLOAD** THE COMPLETE MANUAL



Item		Designation	Item		Designation
1	●	Clear-view lifting mast	10	●	Drive wheel
2	●	Overhead guard	11	●	Footstep
3	●	Free-lift cylinder	12	●	Foot switch
4	○	Auxiliary hydraulics (ZH2)	13	●	Battery trolley unlocking system
5	●	Control lever „Mast tilting“	14	●	Parking brake
6	●	Control lever „Traversing of Mast“	15	●	Key switch
7	●	Solo-pilot	16	●	Master switch (emergency stop)
8	●	Load-bearing wheels	17	●	Information and service display (LISA)
9	●	Wheel arm	18	○	Safety belt

● = Standard equipment      ○ = Optional equipment

# D Battery - servicing, recharging, replacement

## 1 Safety regulations governing the handling of lead-acid batteries

The truck must be parked and rendered safe, before any operations on batteries are to be undertaken (refer to chapter E).

**Servicing staff:** Recharging, servicing and replacing of batteries must only be performed by qualified personnel. The instructions contained in this operating manual, and the instructions as prepared by the battery supplier and as available at the battery recharging station must be observed, when performing the above operations.

**Fire protection measures:** Smoking and naked flames are not permitted when handling batteries. No inflammable substances or spark-generating materials must be present or stored within a distance of 2 meters of the truck parked for battery recharging. The location must be well ventilated and fire fighting equipment must be kept ready.

**Servicing of batteries:** The battery cell screw caps must be kept dry and clean. Terminals and cable shoes must be clean, lightly greased with pole grease and must be securely tightened.

**Disposal of the battery:** Batteries must only be disposed of as stipulated in the national environmental protection regulations or waste disposal provisions. The manufacturer's specifications for the disposal must be heeded.



Before closing the battery hood, make sure that the battery cable cannot be damaged.



Batteries contain dissolved acid, which is toxic and caustic. For this reason protective clothing and goggles must be worn whenever work is undertaken on batteries. Avoid physical contact with battery acid. If clothing, skin or eyes have accidentally come into contact with battery acid, liberally flush the affected parts with clean water. Consult a doctor, when skin or eyes have come into contact with battery acid. Spilled battery acid must be immediately neutralized.

## 2 Battery type

The battery types correspond to IEC 254 / EN 60254.

Depending on use, the ETVC 16/20 can be equipped with different types of batteries. The following table shows the capacity and battery types provided:

	Capacity	Designation
48 V - 4PzS - Battery	560 Ah	560L
48 V - 5PzS - Battery	700 Ah	700L

The battery weights can be seen on the battery identification plate. Batteries with non insulated terminals must be covered with a non slip insulation mat.



When replacing or installing batteries, ensure that the battery is correctly secured in the battery compartment of the truck. Battery weight and battery dimensions have a considerable effect on the stability of the truck. Battery type changes are therefore permitted only after obtaining approval from the manufacturer.

### 3 Start-up of truck



The driver must make sure that nobody is within the danger area of the truck, before the truck is switched on or operated, or before a load is lifted.

#### Checks and operations to be performed before starting daily work

- Visually check the entire truck (especially the wheels and load devices) for damages and wear.
- Check the load chains for uniform tension.
- Visually check the security of the battery and the cable connections.

#### Adjusting the driver seat



To ensure optimum shock absorption, the driver seat must be adjusted to the weight of the driver.

The driver seat must not be occupied while being adjusted to the driver weight.

Setting the driver weight:

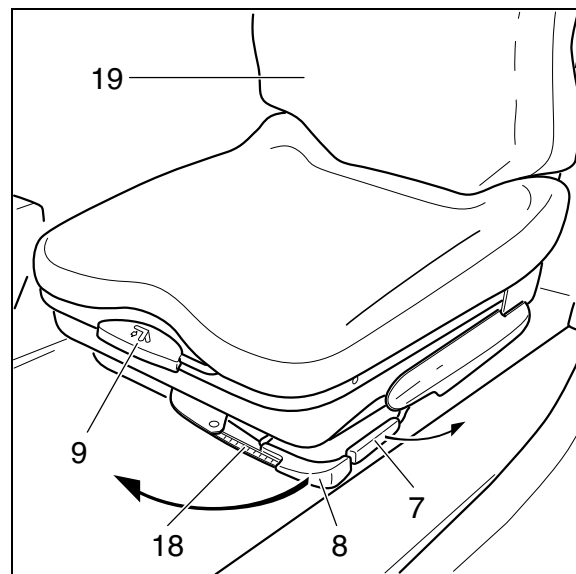
- Pull the lever (8) in the direction indicated by the arrow and release it again.



The previously set driver weight is reset to the minimum value.

Setting range for the shock absorption:  
50 kg to 130 kg.

- Pull the lever (8) again in the direction indicated by the arrow until reaching the appropriate weight mark on the scale (18). Then release the lever again.
- Sit down on the driver seat.



Do not reach between the seat and the chassis wall/overhead guard.

Adjusting the backrest:

- Pull the locking lever (9) upward and adjust the inclination of the backrest (19).
- Release the locking lever again, the backrest is locked in position.

Adjusting the seat position:

- Pull the locking lever (7) of the driver's seat adjustment up in direction of the arrow and slide the seat backwards or forwards into the desired seating position.
- Let the locking lever (7) engage again.



The driver seat locking system must be properly engaged in the set position. The position of the seat must not be changed while driving!



The driver seat adjusting mechanism shown relates to the standard version. For all different designs the adjusting instructions as supplied by the manufacturer apply. When performing the seat adjustments, ensure that all operating controls are within easy reach.

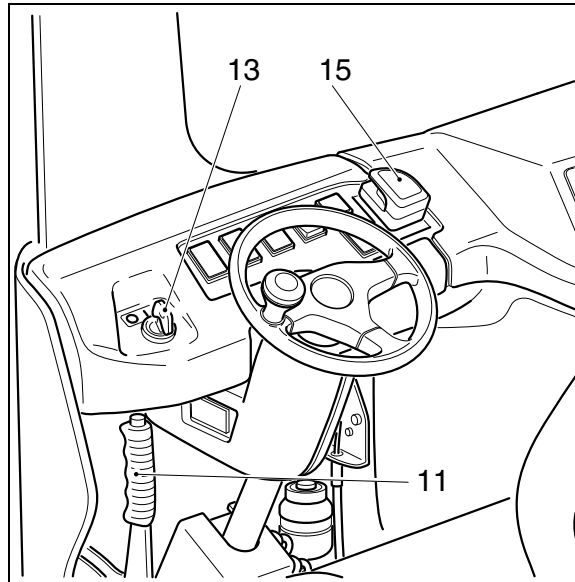
#### 4.7 Rendering truck safe when parking

When the truck is parked and left unattended, it has to be rendered safe, even if it is left unattended for only a short period of time.



Never park the truck on a slope or incline. The load lifting device must always be completely lowered.

- Press the parking brake switch (11).
- Completely lower the load lifting device and move it to a horizontal position.
- Completely retract the mast holder.
- Depress the master switch (15) to the position „OFF“.
- Switch the key switch (13) to the position „0“ and remove the key from the key switch.



**Work on the electric system:** Work on the electric system of the truck must only be performed by personnel specially trained for such operations. Before commencing any work on the electric system, all measures required to prevent electric shocks have to be taken. For battery-operated fork-lift trucks, the truck must also be depowered by removing the battery plug.

**Welding operations:** To prevent any damage to electric or electronic components, these have to be removed from the fork-lift truck before any welding operations are undertaken.

**Settings:** When repairing or replacing hydraulic, electric or electronic components or assemblies, all truck-specific settings have to be retained.

**Tyres:** The quality of the tyres greatly affects the stability and the driving behaviour of the fork-lift truck.

The factory-mounted tyres must only be replaced by original spare parts of the manufacturer, since otherwise the specification of the data sheet cannot be met.

When replacing wheels or tyres, it must be ensured that the fork-lift truck remains level (tyres and wheels must always be replaced in pairs, i.e. left and right together).

**Lift chains:** The lift chains wear rapidly if not lubricated. The intervals in the service checklist apply to normal duty. If requirements are higher (dust, temperature), lubrication is required more often. The specified chain spray must be used as specified. The external application of grease does not provide sufficient lubrication.

**Hydraulic hoses:** The hoses must be renewed every six years. When replacing hydraulic components, also renew the hoses in this hydraulic system.

CLICK HERE TO **DOWNLOAD** THE COMPLETE MANUAL

- Thank you very much for reading the preview of the manual.
- You can download the complete manual from: [www.heydownloads.com](http://www.heydownloads.com) by clicking the link below



- Please note: If there is no response to CLICKING the link, please download this PDF first and then click on it.

CLICK HERE TO **DOWNLOAD** THE COMPLETE MANUAL