

EJE 112i

05.11 -

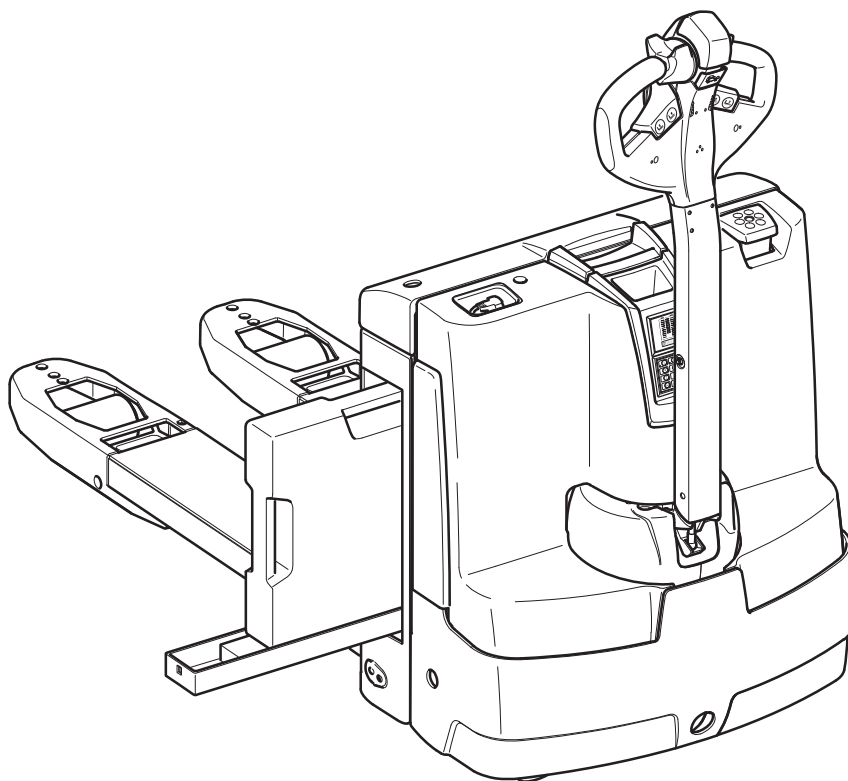
Operating instructions



51225548

12.13

EJE 112i



CLICK HERE TO **DOWNLOAD** THE COMPLETE MANUAL

- Thank you very much for reading the preview of the manual.
- You can download the complete manual from: www.heydownloads.com by clicking the link below



- Please note: If there is no response to CLICKING the link, please download this PDF first and then click on it.

CLICK HERE TO **DOWNLOAD** THE COMPLETE MANUAL

A Correct Use and Application

1 General

The truck must be used, operated and serviced in accordance with the present instructions. All other types of use are beyond its scope of application and may result in damage to personnel, the industrial truck or property.

2 Correct application

NOTE

The maximum load and load distance are indicated on the capacity plate and must not be exceeded.

The load must rest on the load handler or be lifted by an attachment approved by the manufacturer.

The load must be fully raised, see "Lifting, transporting and depositing loads" on page 86.

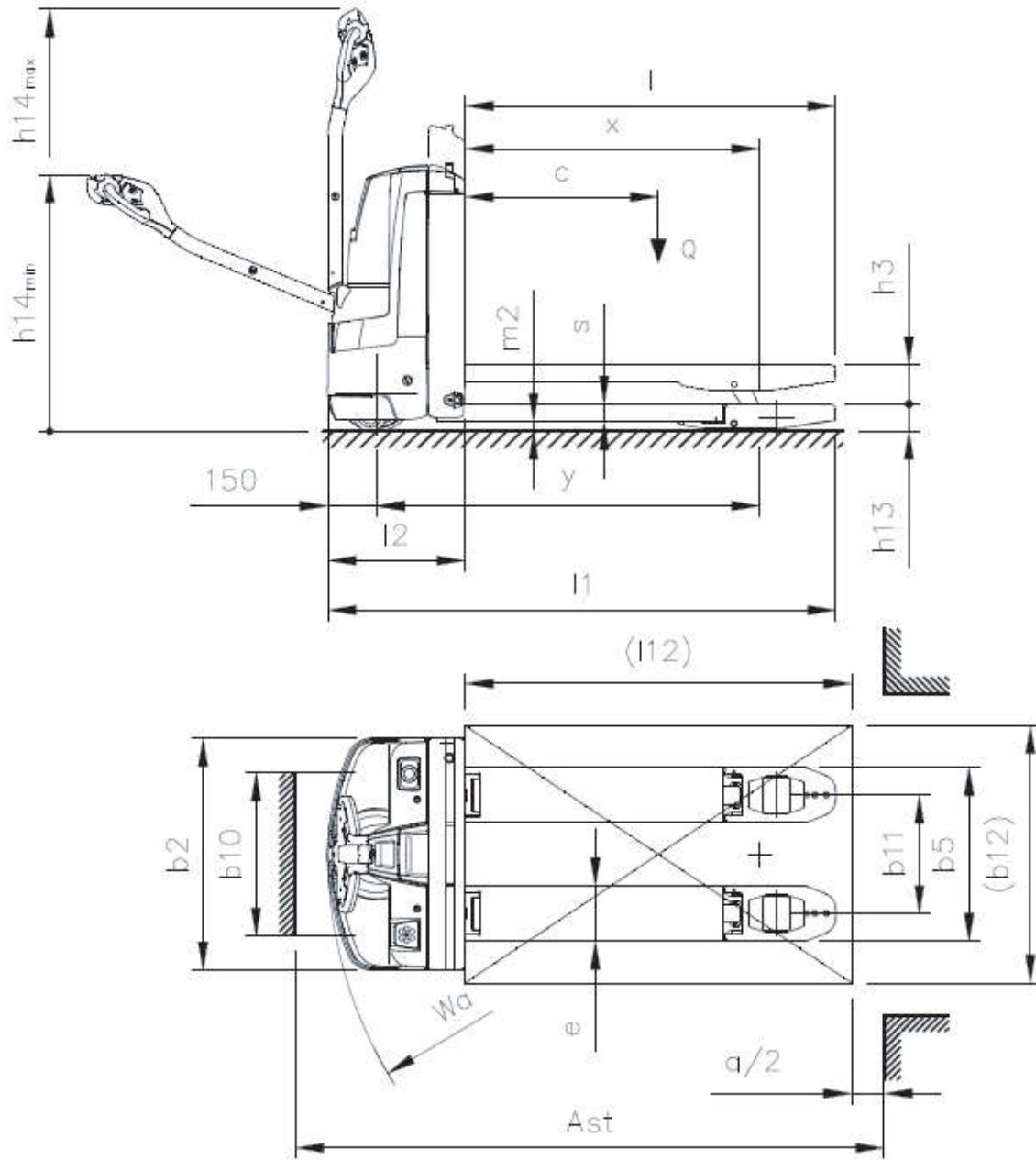
The following operations are in accordance with regulations and are permitted:

- Lifting and lowering loads.
- Transporting lowered loads.

The following operations are prohibited:

- Carrying and lifting passengers.
- Pushing or pulling loads.
- Transverse handling of long loads.

4.2 Dimensions



2 Transport

WARNING!

Uncontrolled movement during transport

Improper fastening of the truck and mast during transport can result in serious accidents.

- ▶ Loading is only to be carried out by specially trained staff. The specialist personnel must be instructed in the securing of loads on road vehicles and in the use of load-securing equipment. When securing the truck, the appropriate measures must be determined and applied for each individual case.
- ▶ The truck must be securely fastened when transported on a lorry or a trailer.
- ▶ The lorry or trailer must have lashing rings.
- ▶ Use wedges to prevent the truck from moving.
- ▶ Use only lashing straps with sufficient load rating.
- ▶ Use anti-slip material to secure loading aids (pallets, wedges,...), e. g. anti-slip mats.

Securing the industrial truck for transport

Requirements

- Load the truck.
- Park the truck securely, see "Parking the truck securely" on page 72.

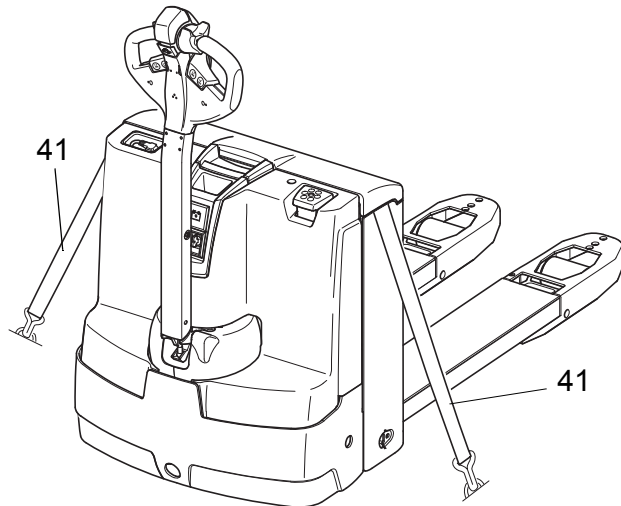
Tools and Material Required

- Lashing straps

Procedure

- Attach the lashing straps (41) to the industrial truck and the transport vehicle and tension sufficiently.

The truck can now be transported.



E Operation

1 Safety Regulations for the Operation of the Forklift Truck

Driver authorisation

The truck may only be used by suitably trained personnel, who have demonstrated to the proprietor or his representative that they can drive and handle loads and have been authorised to operate the truck by the proprietor or his representative.

Operator's rights, responsibilities and rules of conduct

The driver must be informed of his duties and responsibilities and be instructed in the operation of the truck and shall be familiar with the operating instructions. Safety shoes must be worn on pedestrian-operated trucks.

Unauthorised use of truck

The operator is responsible for the truck during the time it is in use. The operator must prevent unauthorised persons from driving or operating the truck. Do not carry passengers or lift other people.

Damage and faults

The supervisor must be informed immediately of any damage or faults to the truck or attachment. Trucks which are unsafe for operation (e.g. wheel or brake problems) must not be used until they have been rectified.

2.3.2 Preparing the truck for operation with the keypad (CanCode)

Preparing the truck for operation by entering a valid operator code

Procedure

- Pull the Emergency Disconnect to unlock it, see "Emergency Disconnect" on page 75.

The LED (57) lights up red.

- Enter the operator code with the digit keys.

When you have entered a valid operator code the LED (57) lights up green, the travel program selected is indicated by the corresponding LEDs (53,54,55) and the truck is switched on.



If the LED (57) flashes red this means the wrong code has been entered. Enter the code again.

The Set key (56) has no function in operating mode.

2.3.3 Switching off the truck with the keypad (CanCode)

Switching off the truck

Procedure

- Press the O key (58).

The truck is switched off and the LED (57) is lit red.



The truck can cut out automatically after a specified time. If no travel, steering or hydraulic operations are performed within a set time, the truck switches off automatically. When you enter a valid code again the truck will be operational. The code lock parameter responsible for automatic cutout must be set, see "Setting the automatic truck cutout (timeframe)" on page 62.

2.3.9 Choose length of the new master code (4-6 digit) and add user codes

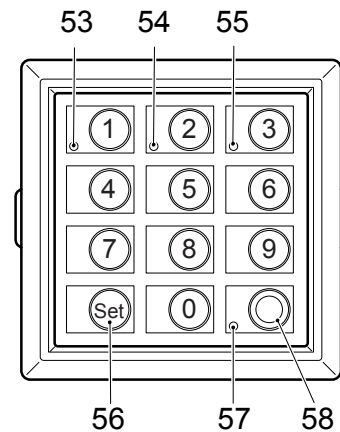
- The master code is factory set to a four-digit entry: If necessary, the four-digit master code can be changed to a five or six-digit entry. Before the master code length can be changed, all user codes must be deleted. The length of the user code (4-6 digit) is always determined by the length of the master code.

Requirements

- To prepare the truck for operation, see "Preparing the truck for operation with the keypad (CanCode)" on page 51.

Procedure

- Delete all user codes, see "Delete all user codes," on page 60.
- Enter the new master code (4-6 digit), see "Changing the master code" on page 52.
- Add user codes again, see "Add operator code" on page 54.



The length of the new master code is now changed and user codes have been added.

CLICK HERE TO **DOWNLOAD** THE COMPLETE MANUAL

- Thank you very much for reading the preview of the manual.
- You can download the complete manual from: www.heydownloads.com by clicking the link below



- Please note: If there is no response to CLICKING the link, please download this PDF first and then click on it.

CLICK HERE TO **DOWNLOAD** THE COMPLETE MANUAL

3.3 Checks and operations to be carried out when the truck is operational

WARNING!


Risk of accident due to damage to or other defects in the truck and optional features

If damage or other truck or attachment (optional equipment) defects are discovered during the following checks, the truck must be taken out of service until it has been repaired.

- ▶ Report any defects immediately to your supervisor.
- ▶ Mark defective truck and take out of service.
- ▶ Do not return the industrial truck to service until you have identified and rectified the fault.

Procedure

- Test warning indicators and safety devices:
 - Test the emergency disconnect function by pressing the emergency disconnect switch. The main circuit is disconnected and no truck operations can be performed. Now pull the emergency disconnect switch to unlock it.
 - Test the horn by pressing the "warning signal" button.
 - Test the effectiveness of the brakes, see "Brakes" on page 81.
 - Test the steering, see "Steering" on page 81.
 - Test the hydraulic system, see "Load handler raise/lower" on page 83.
 - Test travel operations, see "Travel" on page 78.
 - Test the "collision safety switch" by depressing it whilst driving in the drive direction.
- Test the controls and displays and check for damage, see "Displays and Controls" on page 43.
 - Check tiller return function.
 - Check the controls automatically return to the neutral position after use.

-  Travel is only enabled when the battery has been inserted into the truck and the battery cover closed correctly.

4.6 Steering

Procedure

- Move the tiller (9) to the left or right.

The truck is steered in the required direction.

4.7 Brakes

WARNING!

Accident risk while braking

The truck's braking response depends largely on the floor condition and the type of surface. The truck's braking distance increases when the ground is wet or dirty.

- ▶ The operator must be aware of floor conditions and take them into account when braking.
 - ▶ Brake with care to prevent the load from slipping.
-

CAUTION!

- ▶ In hazardous situations set the tiller to the brake zone or press the Emergency Disconnect switch.
-

The truck can brake in two ways:

- With the service brake (brake zone B).
- By regenerative braking (coasting brake).

5.1 Truck does not start

Possible Cause	Remedy
Battery not inserted correctly	Remove battery and insert again
Battery cover not closed correctly	Close battery cover and lock it in place
Emergency Disconnect switch pressed	Release the Emergency Disconnect switch, see "Emergency Disconnect" on page 75
Incorrect CANCode PIN entered	Enter correct PIN, see "Preparing the truck for operation with the keypad (CanCode)" on page 51
Battery charge too low	Check the battery charge and charge battery if necessary. see "Charging the battery" on page 36
Faulty fuse	Check fuses see "Checking electrical fuses" on page 119

5.2 Load cannot be lifted

Possible Cause	Remedy
Truck not operational	Carry out all measures listed under "Truck does not start"
Hydraulic oil level too low	Check the hydraulic oil level see "Checking the hydraulic oil level" on page 117
Battery discharge monitor has switched off	Charge the battery, see "Charging the battery" on page 36
Faulty fuse	Check fuses see "Checking electrical fuses" on page 119
Excessive load	Note maximum capacity, see data plate

F Industrial Truck Maintenance

1 Operational Safety and Environmental Protection

The checks and servicing operations contained in this chapter must be performed in accordance with the maintenance checklist service intervals.

WARNING!

Risk of accidents and component damage

Any modification to the truck, in particular the safety mechanisms, is prohibited.

Exception: Operating companies should only make changes or have changes made to powered industrial trucks if the truck manufacturer is no longer operating in the field and there is no successor to the business; operating companies must however:

- Ensure that the changes to be made are planned, tested and performed by a specialist engineer in industrial trucks taking safety into account.
- Have a permanent record of planning, testing and implementation of the change
- Carry out and have authorised the respective changes to the capacity data plates, decals and stickers as well as the operator and service manuals.
- Attach permanent and clearly visible marking to the truck indicating the types of changes made, the date of the changes and the name and address of the organisation responsible for the work.

NOTE

Only original spare parts are subject to the manufacturer's quality control. To ensure safe and reliable operation, use only the manufacturer's spare parts.



On completion of inspection and service work, carry out the operations listed in the "Recommissioning the truck after cleaning or maintenance work" section (see "Restoring the truck to service after maintenance and repairs" on page 120).

4.3 Cleaning

4.3.1 Cleaning the truck

 **CAUTION!**

Fire hazard

Do not use flammable liquids to clean the industrial truck.

- ▶ Disconnect the battery before starting cleaning work.
 - ▶ Carry out all necessary safety measures to prevent sparking before cleaning (e.g. by short-circuiting).
-

 **CAUTION!**

Risk of component damage when cleaning the truck

Cleaning with a pressure washer can result in malfunctions due to humidity.

- ▶ Cover all electronic system assemblies (controllers, sensors, motors etc.) before cleaning the truck with a pressure washer.
 - ▶ Do not hold the jet of the pressure washer by the marked points to avoid damaging them (see "Identification points and data plates" on page 25).
 - ▶ Do not clean the truck with pressurised water.
-

5 Decommissioning the industrial truck

If the truck is to be out of service for more than a month, it must be stored in a frost-free and dry room. All necessary measures must be taken before, during and after decommissioning as described hereafter.

When the truck is out of service it must be jacked up so that all the wheels are clear of the ground. This is the only way of ensuring that the wheels and wheel bearings are not damaged.

→ Jack up the truck, see "Lifting and jacking up the truck safely" on page 109.

If the truck is to be out of service for more than 6 months, agree further measures with the manufacturer's customer service department.

5.1 Prior to decommissioning

Procedure

- Thoroughly clean the truck, see "Cleaning" on page 111.
- Check the hydraulic oil level and replenish if necessary, see "Consumables" on page 108.
- Apply a thin layer of oil or grease to any non-painted mechanical components.
- Lubricate the truck according to the lubrication schedule, see "Lubrication Schedule" on page 107.
- Charge the battery, see "Charging the battery" on page 36.

NOTE

Discharge can damage the battery

If the battery is not used for a long period of time, it can become damaged through discharge.

- ▶ Before a long period of inactivity, the battery must be fully charged.
 - ▶ To ensure a long battery life, we recommend charging the battery every 14 days when it is not being used.
 - ▶ If the charger has the "compensation charge" update (from 02.2013), keep the battery in the charger.
-

G Jungheinrich lithium-ion battery

1 Jungheinrich lithium-ion battery

The Jungheinrich lithium-ion battery is a battery with rechargeable high-performance energy cells.

1.1 Battery nominal data

1.	Product	40 Ah lithium ion battery consisting of 7 battery cells CERIO HEI40/HEA40
2.	Nominal voltage	25.2 V (3.6 V x 7 cells)
3.	Rated capacity C5	See data plate
4.	Charge current	39 A (only with Jungheinrich charger SLH 40i)
5.	Operational application temperature	0°C up to 40°C (reduced travel between 0°C and 5°C) ¹
6.	Charging application temperature	5°C to 40°C
7.	Electro-chemical system	Lithium ion, NMC cathode

1) Permissible application temperature range of truck -10°C to 40°C, permissible temperature range for parking the truck 0°C to 40°C.

1.2 Accessories

When charging the Jungheinrich lithium ion battery use only the Jungheinrich charger SLH 40i.

CAUTION!

The use of a different charger can result in overheating, fire or a battery explosion.

1.3 BMS (Battery Management System)

The battery is permanently monitored by the BMS (Battery Management System). This provides the communication with the truck.

The BMS continually monitors items such as the cell temperature, the voltage and the charge status of the cells.

4 Battery lifetime and maintenance

The lithium-ion battery is wear-free.

The components are maintenance-free, as a result there are no maintenance intervals planned for this battery.

The battery is permanently monitored by the BMS (battery management system).

NOTE

Discharge can damage the battery

If the battery is not used for a long period of time, it can become damaged through discharge.

- ▶ Before a long period of inactivity, the battery must be fully charged.
 - ▶ To ensure a long battery life, we recommend charging the battery every 14 days when it is not being used.
 - ▶ If the charger has the "compensation charge" update (from 02.2013), keep the battery in the charger.
-

CLICK HERE TO **DOWNLOAD** THE COMPLETE MANUAL

- Thank you very much for reading the preview of the manual.
- You can download the complete manual from: www.heydownloads.com by clicking the link below



- Please note: If there is no response to CLICKING the link, please download this PDF first and then click on it.

CLICK HERE TO **DOWNLOAD** THE COMPLETE MANUAL