

# EZS 330/350 / XL

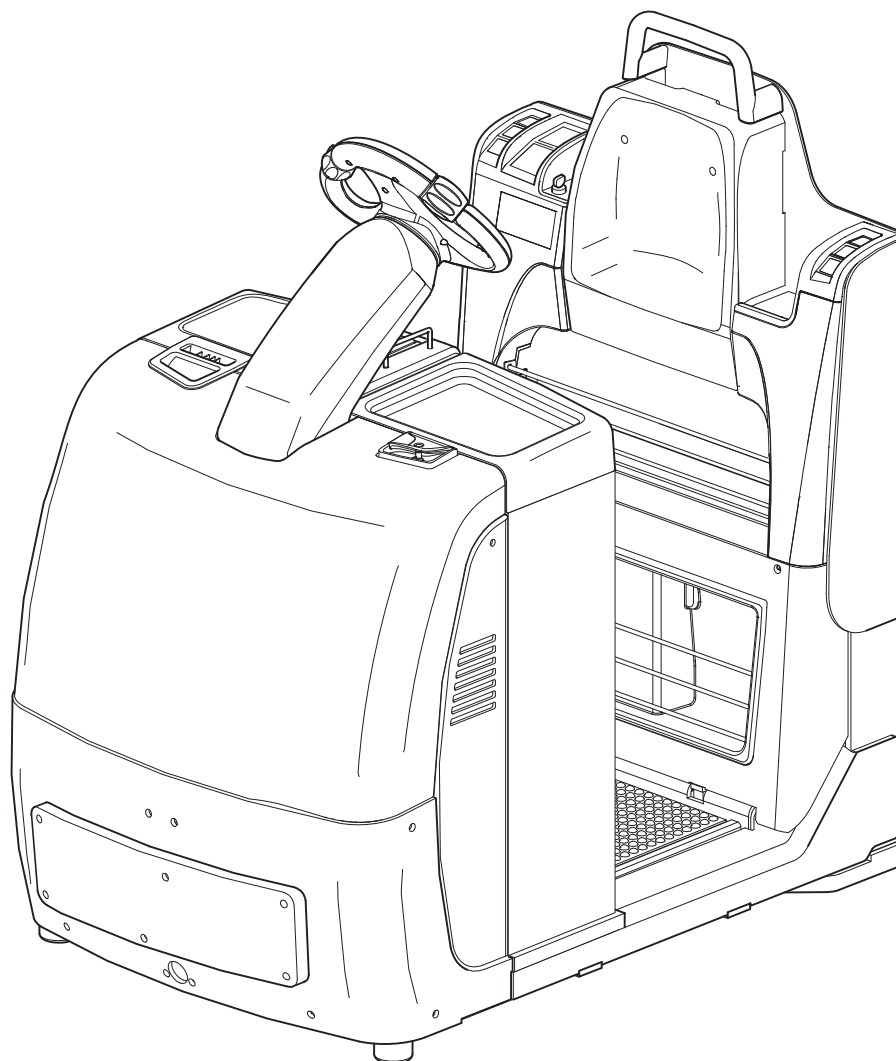
04.06 -

Operating instructions

GB

50468397

04.06



**JUNGHEINRICH**

CLICK HERE TO **DOWNLOAD** THE COMPLETE MANUAL

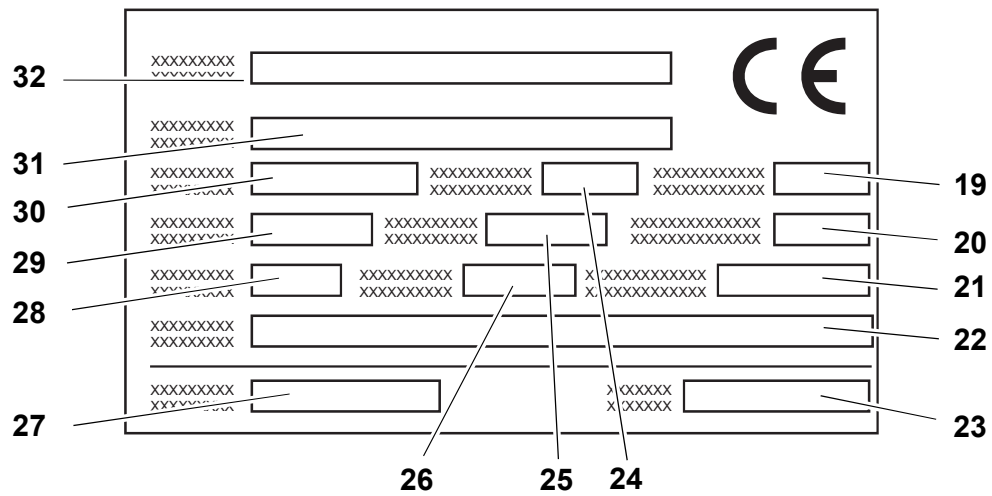
- Thank you very much for reading the preview of the manual.
- You can download the complete manual from: [www.heydownloads.com](http://www.heydownloads.com) by clicking the link below



- Please note: If there is no response to CLICKING the link, please download this PDF first and then click on it.

CLICK HERE TO **DOWNLOAD** THE COMPLETE MANUAL

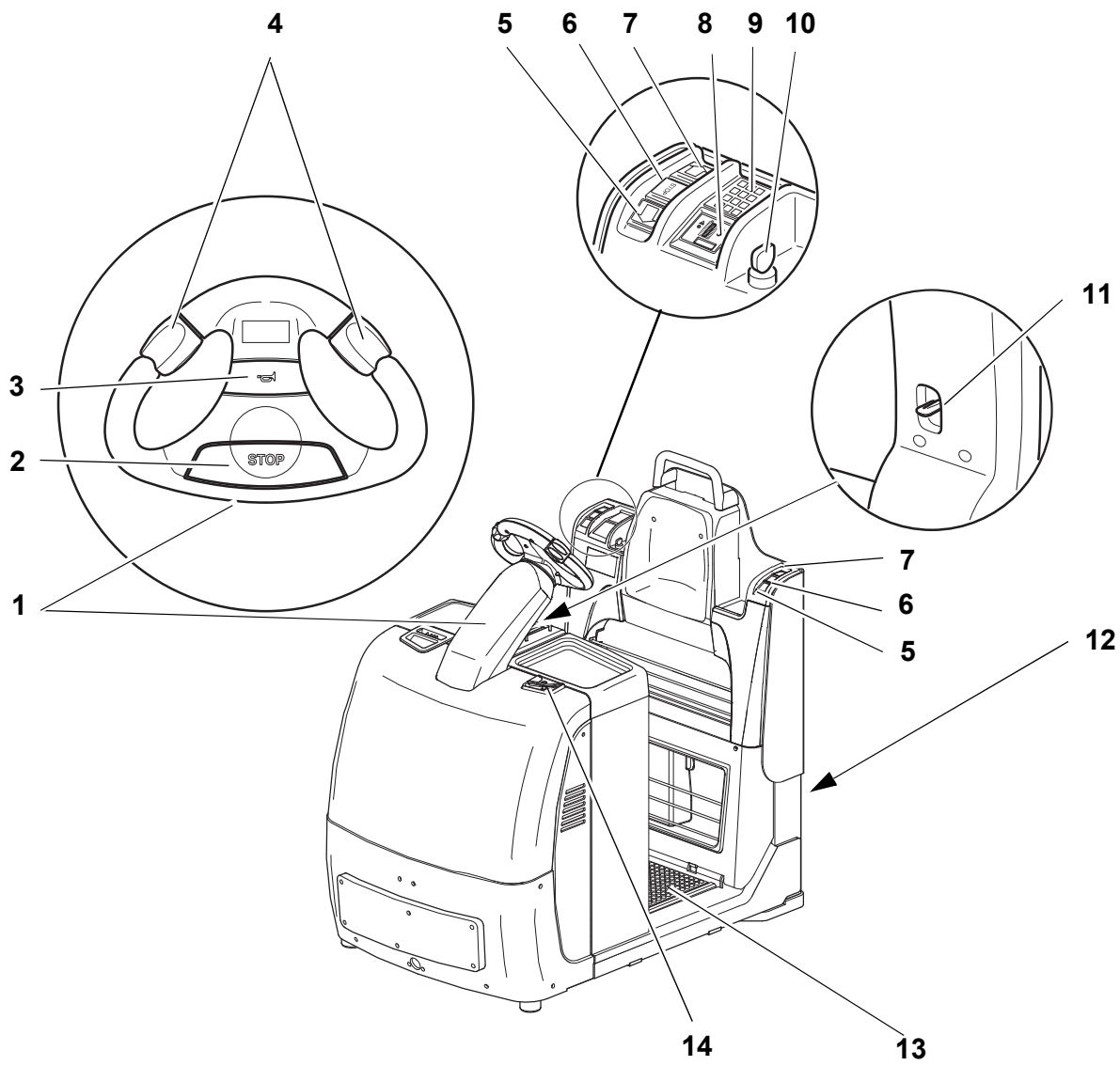
#### 4.1 Truck data plate



Item	Description
19	Max. supporting force (kg)
20	Net weight w.o. battery (kg)
21	Min./max. battery weight (kg)
22	Manufacturer
23	Customer no.
24	Year of manufacture
25	Rated tow force 5 min. in N
26	Output (kW)
27	Order no.
28	Battery: Voltage (V)
29	Rated tow force 60 min. in N
30	Serial no.
31	Type
32	Manufacturer's logo



For any queries relating to the truck or spare part orders, please state the truck serial no. (22).



## Display for parameter changes (travel programs)

The LC display (38) is used in conjunction with the operator keyboard (CANCODE (○)) to display the setting parameters. The first three digits of the display show the parameter numbers, the last three digits indicate the parameter value.



Settings of parameter group 0XX (code lock) are not displayed.

## 5.2 Power up test

On power up the display shows:

- the software version of the display instrument (briefly),
- the operating hours
- the charge status

No.	Function	Setting range	Standard setting	Comments
<b>Travel program 3</b>				
300	Acceleration in Pedestrian mode	0 - 9	7	Value of parameter 301 >= Parameter 300
301	Acceleration in Rider mode	0 - 9	7	
302	Coasting brake in rider mode	0 - 9	7	
303	Coasting brake in Pedestrian mode	0 - 9	7	Value of parameter 303 >= Parameter 302
304	Maximum speed in drive direction via controller	0 - 9	8	depending on travel switch
305	Pedestrian speed in drive direction via controller	0 - 9	5	depending on travel switch
306	Pedestrian speed in drive direction via pushbutton in backrest	0 - 9	3	not dependant on travel switch (fixed speed)
308	Maximum speed in fork direction via controller	0 - 9	8	depending on travel switch
309	Pedestrian speed in fork direction via controller	0 - 9	5	depending on travel switch
310	Pedestrian speed in fork direction via pushbutton in backrest	0 - 9	3	not dependant on travel switch (fixed speed)

CLICK HERE TO **DOWNLOAD** THE COMPLETE MANUAL

- Thank you very much for reading the preview of the manual.
- You can download the complete manual from: [www.heydownloads.com](http://www.heydownloads.com) by clicking the link below



- Please note: If there is no response to CLICKING the link, please download this PDF first and then click on it.

CLICK HERE TO **DOWNLOAD** THE COMPLETE MANUAL