

# SKYJACK™

## MAINTENANCE & PARTS MANUAL



# SJ-1000 Series

**Engine Powered**  
Model SJ-9250 Manufactured  
September 1996 And Since

**For Service please call ..... 800 275-9522**  
Skyjack Inc. Service Center, 3451 Swenson Ave., St. Charles, IL. 60174 ... FAX 630 262-0006  
**For Parts in North America and Asia please call ..... 800 965-4626**  
Skyjack Inc. Parts Center, 3451 Swenson Ave., St. Charles, IL. 60174 ..... FAX 888 782-4825  
**For Parts & Service in Europe please call ..... 44-1691-676 236**  
Skyjack Europe Glovers Meadow, Maesbury Road, Oswestry, Shropshire, UK ..... FAX 44-169- 676 238

CLICK HERE TO **DOWNLOAD** THE COMPLETE MANUAL

- Thank you very much for reading the preview of the manual.
- You can download the complete manual from: [www.heydownloads.com](http://www.heydownloads.com) by clicking the link below



- Please note: If there is no response to CLICKING the link, please download this PDF first and then click on it.

CLICK HERE TO **DOWNLOAD** THE COMPLETE MANUAL

1.15 Safety Precautions (Continued)

Know And Understand The Safety Precautions Before Going On To Next Section.

- **DO NOT** operate on surfaces not capable of holding the weight of the aerial platform including the rated load, e.g. covers, drains, and trenches.

- **DO NOT** operate an aerial platform that has ladders, scaffolding or other devices mounted on it to increase its size or work height. It is prohibited.



- **DO NOT** exert side forces on aerial platform while elevated.



- **DO NOT** use the aerial platform as a crane. It is prohibited.



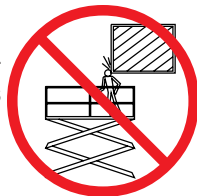
- **DO NOT** sit, stand or climb on the guardrails. It is prohibited.



- **DO NOT** climb on scissor arm assembly. It is prohibited.



- **BE AWARE** of overhead obstructions or other possible hazards around the aerial platform when driving or lifting.



- **DO NOT** raise the aerial platform while the machine is on a truck, fork lift or other device or vehicle.



- **BE AWARE** of crushing hazards. Keep all body parts inside platform guardrail.



- **DO NOT** lower the platform unless the area below is clear of personnel and obstructions.



- **ENSURE** that there are no personnel or obstructions in the path of travel, including blind spots.



- **BE AWARE** of blind spots when operating the aerial platform.

- **STUNT** driving and horseplay are prohibited.

- **ENSURE ALL** tires are in good condition and lug nuts are properly tightened.

- **DO NOT** alter or disable limit switches or other safety devices.

- **DO NOT** use the aerial platform without guardrails, lock pins and the entry gate/chain/bar in place.

- **DO NOT** exceed the rated capacity of the aerial platform. Do make sure the load is evenly distributed on the platform.

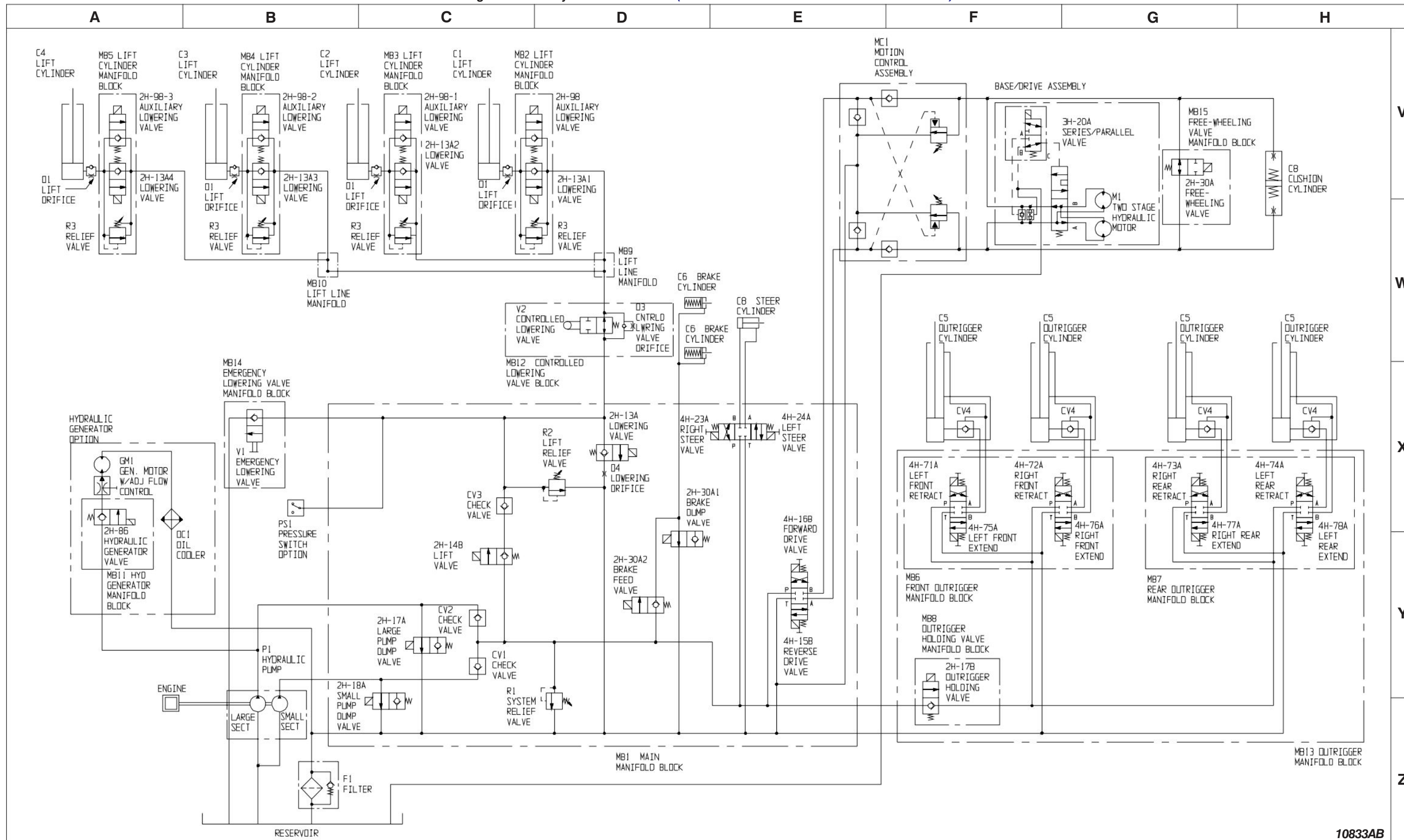
**Table 2-5. Owner's Annual Inspection Record**

<b>Model Number</b> _____				<b>Serial Number</b> _____				
<b>Recording Date</b>								
<b>Recording Year #</b>	1	2	3	4	5	6	7	8
<b>Owner's Name</b>								
<b>Inspected By</b>								

60141AA

As described earlier in this section, this decal is located on the scissor assembly. It must be completed after an annual inspection has been completed. Do not use the aerial platform if an inspection has not been recorded in the last 13 months.

Figure 3.2-2B. Hydraulic Schematic (Machines With Serial Number 5865 And Above)



10833AB

**Figure 3.3-1C. Control Box Diagram - No Options  
(Machines With Serial # 50772 And Above)**

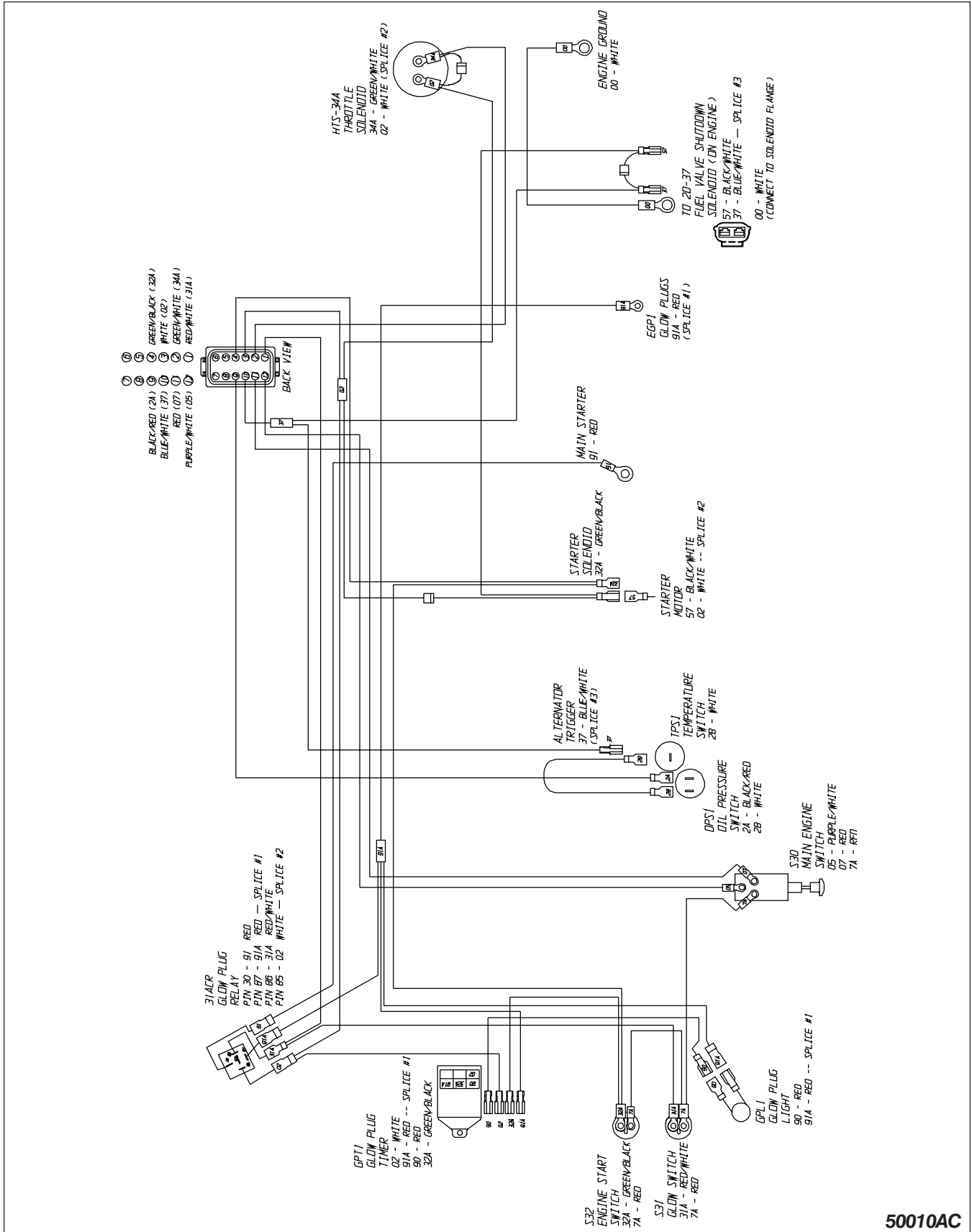
Index No.	Skyjack Part No.	Qty.	Description
1	122840	1	CONNECTOR ASSEMBLY, Male 9 pole
	116993	1	• HOUSING, Connector Male 9 pole
	116990	9	• PIN, Female wire
	122841	1	CONNECTOR ASSEMBLY, Female 9 pin
	122839	1	• HOUSING, Connector Female 9 pin
	116989	9	• PIN, Male wire
2	(Ref.)	1	LIGHT ASSEMBLY, Power indicator
	103202	1	• LENS, Red
	102671	1	• BASE, Indicator light
	103221	1	• BULB, 12 Volt
3	(Ref.)	1	SWITCH ASSEMBLY, Throttle select
	100149	1	• WASHER, Flat
	102836	1	• HEAD, Select switch
	103100	1	• BASE, Contact
	103141	1	• BLOCK, N.O. Contact (Kubota Engines)
	103225	1	• BLOCK, N.C. Contact (Ford Engines)
4	(Ref.)	1	SWITCH ASSEMBLY, Range select
	100149	1	• WASHER, Flat
	102836	1	• HEAD, Select switch
	103100	1	• BASE, Contact
	103141	1	• BLOCK, N.O. Contact
5	(Ref.)	1	SWITCH ASSEMBLY, Up/down selector
	100149	1	• WASHER, Flat
	102837	1	• HEAD, Selector switch
	103100	1	• BASE, Contact
	103141	2	• BLOCK, N.O. Contact
6	(Ref.)	1	SWITCH ASSEMBLY, Emergency stop
	100149	1	• WASHER, Flat
	102769	1	• HEAD, Stop switch
	103100	1	• BASE, Contact
	103225	1	• BLOCK, N.C. Contact
7	(Ref.)	1	SWITCH ASSEMBLY, Start push-button
	102851	1	• HEAD, Push-button switch
	103100	1	• BASE, Contact
	103141	1	• BLOCK, N.O. Contact
	100149	1	• WASHER, Flat (If Equipped)
8	(Ref.)	1	SWITCH ASSEMBLY, Choke or glow plug
	102851	1	• HEAD, Push-button switch
	103100	1	• BASE, Contact
	103141	1	• BLOCK, N.O. Contact
	100149	1	• WASHER, Flat (If Equipped)

**Parts list continued on the following page.**

**Figure 3.3-2C. Control Box Diagram - With Outriggers And All Options (Continued)**  
**(Machines With Serial # 50772 And Above)**

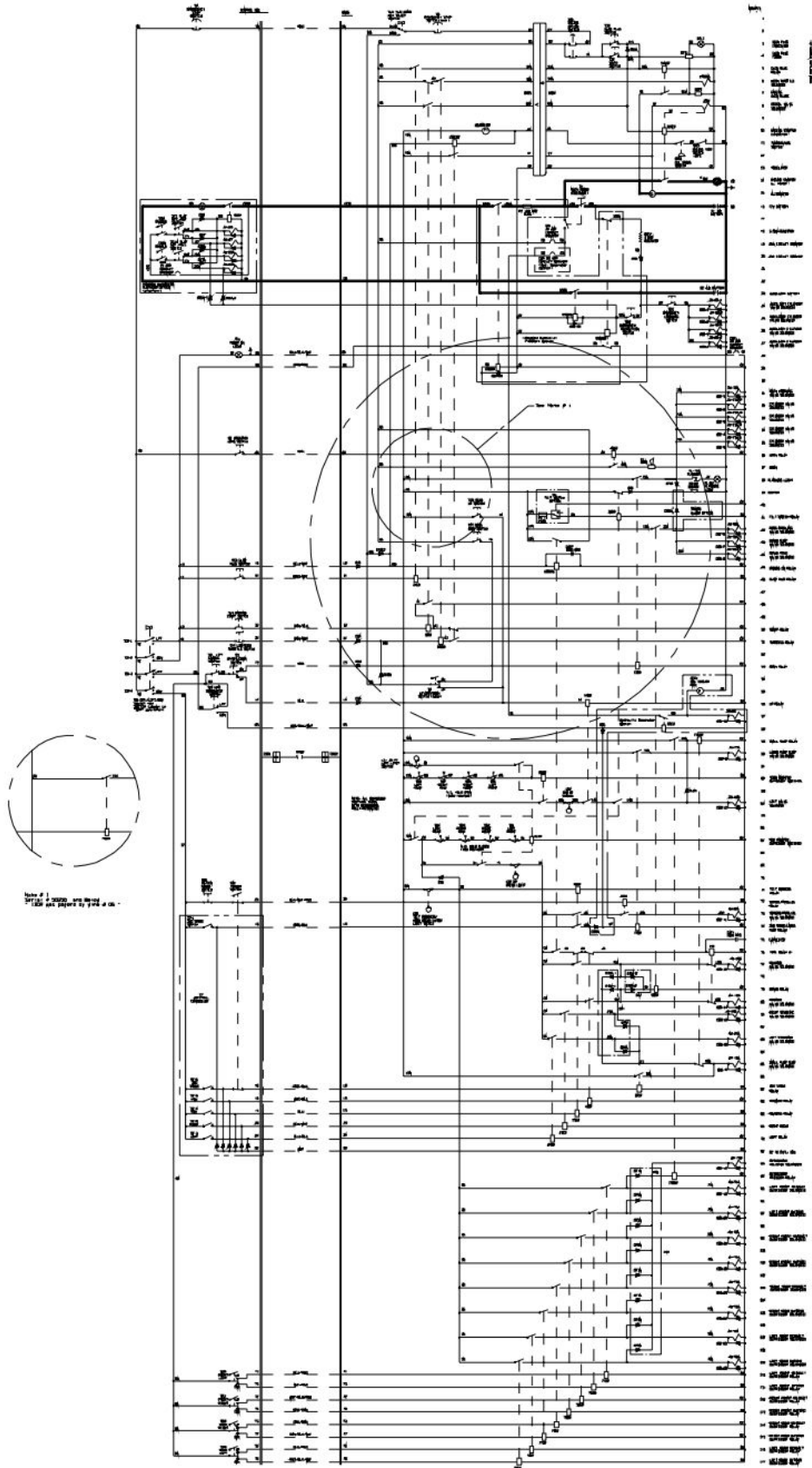
Index No.	Skyjack Part No.	Qty.	Description
			<b>Parts list continued from the previous page.</b>
9	(Ref.)	1	SWITCH ASSEMBLY, Enable push-button
	100149	1	• WASHER, Flat (If Equipped)
	108854	1	• HEAD, Push-button switch (green)
	103100	1	• BASE, Contact
	103141	2	• BLOCK, N.O. Contact
10	(Ref.)	1	SWITCH ASSEMBLY, Key select
	100149	1	• WASHER, Flat
	102753	1	• HEAD, 3-Position key select
	103100	1	• BASE, Contact
	103141	1	• BLOCK, N.O. Contact
11	103225	1	• BLOCK, N.C. Contact
	114485	1	CABLE ASSEMBLY, Control Box
	114475	1	• CONNECTOR, 32 Pole female
	114476	1	• CONNECTOR, 32 Pole male
	115274	AR	• CABLE, Control 18/30
12	103012	2.3	STRIP, Terminal block
	103955	6	• SCREW, Machine #6-32 x 3/4" lg.
	103985	6	• NUT, Machine #6-32
13	114373	1	SWITCH, Torque toggle
14	(Ref.)	1	SWITCH ASSEMBLY, Horn push-button
	100149	1	• WASHER, Flat (If Equipped)
	102851	1	• HEAD, Push-button switch
	103100	1	• BASE, Contact
	103141	1	• BLOCK, N.O. Contact
15	102853	4	SWITCH, Outrigger control switch
16	(Ref.)	1	SWITCH ASSEMBLY, Hydraulic generator
	100149	1	• WASHER, Flat (If Equipped)
	103221	1	• BULB, 12 Volt
	112436	1	• HEAD, Illuminated push-button switch
	112434	1	• BLOCK, Switch and hold contact
	112435	1	• BASE W/CONTACT BLOCKS, Lamp
	103141	1	• • BLOCK, N.O. Contact
	103225	1	• • BLOCK, N.C. Contact

**Figure 3.4-5B. Engine Wiring Diagram - Kubota Diesel Engine  
(For Machines With Serial No. 51085, & Above)**



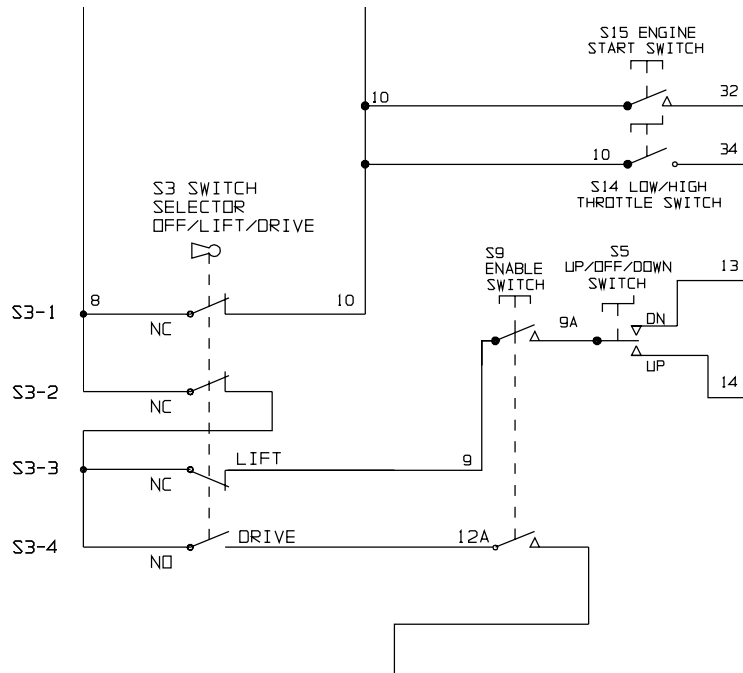
50010AC

**FIGURE 3.5-8. ELECTRICAL SCHEMATIC - CE (Shown With Outrigger Mechanical Limit Switches, Kubota Diesel Engine and All Options)**

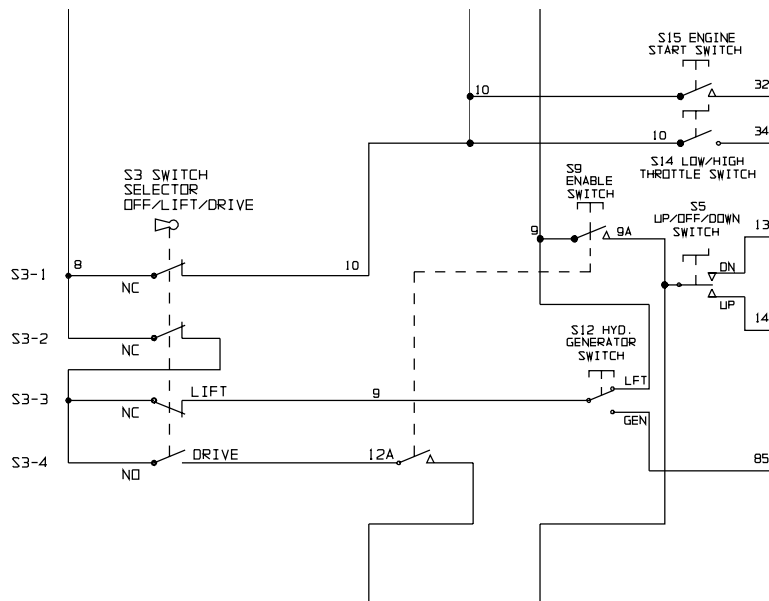


es-04ce-b

**Figure 3E. Model 9250(a) Revised Schematic  
(Ce Models Equipped With Lift/ Drive Enable) (Machines With Serial #50612 To #50771)**



**Machines Equipped With No Options**



**Machines Equipped With All Options**

### Troubleshooting Information - Electrical System

Probable Cause	Remedy
<b>4.1-15. STEER RIGHT INOPERATIVE</b>	
<ol style="list-style-type: none"> <li>1. Defective Steer Right Switch (S7-2) in Joystick Controller (S7).</li> <li>2. Loose or broken wire #23 from Steer Right Switch (S7-2) to Platform Terminal Block (TB5).</li> <li>3. Loose or broken wire #23 from Platform Terminal Block (TB5) to Relay (23CR).</li> <li>4. Defective Relay (23CR).</li> <li>5. Loose or broken wire #23A from Relay (23CR) to Base Terminal Block (TB1).</li> <li>6. Loose or broken wire #23A from Relay (23CR) to Steer Right Valve Coil (4H-23A).</li> <li>7. Defective Steer Right Valve Coil (4H-23A).</li> <li>8. Loose or broken wire #02 from Steer Right Valve Coil (4H-23A).</li> <li>9. Loose or broken wire #02 from Relay (23CR) to Base Terminal Block (TB1).</li> <li>10. Open Diode (D23A).</li> </ol>	<ol style="list-style-type: none"> <li>1. Check switch. Replace if defective.</li> <li>2. Check continuity. Replace if defective.</li> <li>3. Check continuity. Replace if defective.</li> <li>4. Check Relay. Replace if defective.</li> <li>5. Check continuity. Replace if defective.</li> <li>6. Check continuity. Replace if defective.</li> <li>7. Check continuity through coil. Replace if defective.</li> <li>8. Check continuity. Replace if defective.</li> <li>9. Check continuity. Replace if defective.</li> <li>10. Check Diode. Replace if defective.</li> </ol>
<b>4.1-16. STEER LEFT INOPERATIVE</b>	
<ol style="list-style-type: none"> <li>1. Defective Steer Left Switch (S7-3) in Joystick Controller (S7).</li> <li>2. Loose or broken wire #24 from Steer Left Switch (S7-3) to Platform Terminal Block (TB5).</li> <li>3. Loose or broken wire #24 from Platform Terminal Block (TB5) to Relay (24CR).</li> <li>4. Defective Relay (24CR).</li> <li>5. Loose or broken wire #24A from Relay (24CR) to Base Terminal Block (TB1).</li> <li>6. Loose or broken wire #24A from Relay (24CR) to Steer Left Valve Coil (4H-24A).</li> <li>7. Defective Steer Left Valve Coil (4H-24A).</li> <li>8. Loose or broken wire #02 from Steer Left Valve Coil (4H-24A).</li> <li>9. Loose or broken wire #02 from Relay (24CR) to Base Terminal Block (TB1).</li> <li>10. Open Diode (D24A).</li> </ol>	<ol style="list-style-type: none"> <li>1. Check switch. Replace if defective.</li> <li>2. Check continuity. Replace if defective.</li> <li>3. Check continuity. Replace if defective.</li> <li>4. Check Relay. Replace if defective.</li> <li>5. Check continuity. Replace if defective.</li> <li>6. Check continuity. Replace if defective.</li> <li>7. Check continuity through coil. Replace if defective.</li> <li>8. Check continuity. Replace if defective.</li> <li>9. Check continuity. Replace if defective.</li> <li>10. Check Diode. Replace if defective.</li> </ol>

### Troubleshooting Information - Electrical System

Probable Cause	Remedy
<b>4.1-34. PLATFORM WILL NOT LOWER FROM PLATFORM OR BASE CONTROLS</b>	
<ol style="list-style-type: none"> <li>1. Loose or broken wire #13 from Base Terminal Block (TB1) to Relay (13CR).</li> <li>2. Defective Relay (13CR).</li> <li>3. Loose or broken wire #02 from Relay (13CR) to Base Terminal Block (TB1).</li> <li>4. Loose or broken wire #05 from Relay (10BCR1) to Relay (13CR).</li> <li>5. Loose or broken wire #13A from Relay (13CR) to Base Terminal Block (TB1).</li> <li>6. Loose or broken wire #13A from Base Terminal Block (TB1) to Down Valve Coil (2H-13A).</li> <li>7. Defective Down Valve Coil (2H-13A).</li> <li>8. Loose or broken wire #02 from Down Valve (2H-13A) to Base Terminal Block (TB1).</li> <li>9. Loose or broken wire #13A from Base Terminal Block (TB1) to Base Terminal Block (TB2).</li> <li>10. Loose or broken wire #13A from Base Terminal Block (TB3) to Lift Cylinder Valves (2H-13A-2), (2H-13A-3), (2H-13A-4) and (2H-13A-5).</li> <li>11. Loose or broken wire #02 from Lift Cylinder Valves (2H-13A-2), (2H-13A-3), (2H-13A-4 and (2H-13A-5) to Base Terminal Block (TB3).</li> </ol>	<ol style="list-style-type: none"> <li>1. Check continuity. Replace if defective.</li> <li>2. Check relay. Replace if defective.</li> <li>3. Check continuity. Replace if defective.</li> <li>4. Check continuity. Replace if defective.</li> <li>5. Check continuity. Replace if defective.</li> <li>6. Check continuity. Replace if defective.</li> <li>7. Check continuity through coil. Replace if defective.</li> <li>8. Check continuity. Replace if defective.</li> <li>9. Check continuity. Replace if defective.</li> <li>10. Check continuity. Replace if defective.</li> <li>11. Check continuity. Replace if defective.</li> </ol>
<b>4.1-35. PLATFORM WILL NOT LOWER FROM PLATFORM CONTROLS</b>	
<ol style="list-style-type: none"> <li>1. Defective Platform Down Switch (S5).</li> <li>2. Loose or broken wire #13 from Platform Down Switch (S5) to Platform Terminal Block (TB5).</li> <li>3. Loose or broken wire #13 from Platform Terminal Block (TB5) to Base Terminal Block (TB1).</li> </ol>	<ol style="list-style-type: none"> <li>1. Check switch. Replace if defective.</li> <li>2. Check continuity. Replace if defective.</li> <li>3. Check continuity. Replace if defective.</li> </ol>
<b>4.1-36. PLATFORM WILL NOT LOWER FROM BASE CONTROLS</b>	
<ol style="list-style-type: none"> <li>1. Defective Platform Down Switch (S17).</li> <li>2. Loose or broken wire #13 from Platform Down Switch (S17) to Base Terminal Block (TB1).</li> </ol>	<ol style="list-style-type: none"> <li>1. Check switch. Replace if defective.</li> <li>2. Check continuity. Replace if defective.</li> </ol>
<b>4.1-37. POWERED EXTENSION DECK INOPERATIVE</b>	
<ol style="list-style-type: none"> <li>1. Loose or broken Battery Cable #103 from Main Power Disconnect Switch (S1) to 100 Amp Fuse (F2).</li> <li>2. Open 100 Amp Fuse (F2).</li> <li>3. Loose or broken Battery Cable #103A from Amp Fuse (F2) to contactor (09CR).</li> <li>4. Defective Contactor (09CR).</li> <li>5. Loose or broken Battery Cable #103B from Contractor (09CR) to Motor Contactor (99CR).</li> <li>6. Defective Motor Contactor (99CR).</li> <li>7. Loose or broken wire #103B from Motor Contactor (99CR) to Circuit Breaker (CB2).</li> </ol>	<ol style="list-style-type: none"> <li>1. Check continuity. Replace if defective.</li> <li>2. Check continuity through fuse. Replace if defective.</li> <li>3. Check continuity. Replace if defective.</li> <li>4. Check contactor. Replace if defective.</li> <li>5. Check continuity. Replace if defective.</li> <li>6. Check contactor. Replace if defective.</li> <li>7. Check continuity. Replace if defective.</li> </ol>

## SYSTEM AND LIFT PRESSURE ADJUSTMENTS

All adjustments **MUST** be made with a **Calibrated Hydraulic Gauge**.

Refer to the Serial Number Nameplate located on the rear of the machine for System and Lift Pressure values.

### SYSTEM RELIEF PRESSURE ADJUSTMENT

1. Locate the Right Steer Hydraulic line at the Main Manifold. (Refer to Hydraulic Manifold Component and Port Identification found in SECTION 3 for location.)
2. Tee in a Calibrated 3000 PSI Gauge into the Right Steer line.
3. Remove the Operator's Control Box from the guardrail and disconnect it from the Scissors Control Cable.
4. Locate the Electrical Panel Cable Plug in the Hydraulic/Electric Cabinet.
5. Disconnect the Scissors Control Cable and connect the Operator's Control Box Cable.
6. At the Main Manifold, loosen the locknut on the System Relief Valve (R1). (Refer to Hydraulic Manifold Component and Port Identification found in SECTION 3 for location.)
7. Select "DRIVE" position with the Lift/Drive Select Switch on the Platform Control Box.
8. Engage Steer Right Switch on the top of the Controller Handle and hold.
9. Check the reading on Pressure Gauge. Adjust the System Relief Valve (R1) to the pressure listed on the Serial Number Nameplate. **NOTE:** Turning the stem on the Relief Valve clockwise increases pressure. Turning the stem counter-clockwise decreases pressure.
10. Release the Steer Switch and retighten the locknut on the System Relief Valve (R1).
11. Remove the gauge from the Steer line.

### LIFT PRESSURE ADJUSTMENT



1. Locate the Lift line coming out of the Main Manifold. (Refer to Hydraulic Manifold Component and Port Identification found in SECTION 3 for location.)
2. Open the Manual Lowering Valve with the platform fully lowered. Remove the Lift line from the Main Manifold.
3. Install a 3000 PSI Gauge into the Lift line port fitting on the Main Manifold. Plug the Lift line going to the Lift Cylinders.
4. Loosen the locknut on the Lift Relief Valve (R2). (Refer to Hydraulic Manifold Component and Port Identification found in SECTION 3 for location.)
5. Close the Manual Lowering Valve. Using the Base Controls in the Hydraulic/Electric Cabinet, depress and hold the Up Push-Button Switch.
6. Observe the reading on the gauge. Adjust the Lift Relief Valve (R2) to the pressure listed on the Serial Number Nameplate. **NOTE:** Turning the stem on the Relief Valve clockwise increases pressure. Turning the stem counter-clockwise decreases pressure.
7. Release the Up Push-Button and retighten the locknut on the Lift Relief Valve (R2).
8. Remove the gauge from the Lift line port fitting and reinstall the Lift line.



# SECTION 6

## PARTS LISTS

### GENERAL

The information contained in this section is designed to aid the user in locating and identifying replacement parts. Component parts of various assemblies and sub-assemblies comprising the work platform are illustrated and accompanied by a descriptive parts list. Exploded drawings are used to show relative location of component parts in disassembly order. If a part cannot be found in this section, order by work platform model number and serial number, giving a complete description of the part.

### PARTS ORDERING INFORMATION

When ordering replacement parts, the complete part number and description should be used to ensure proper identification and delivery of the desired item. This complete identification should also be used when requesting equipment information.

### METHOD OF LISTING

Parts are listed in order according to the reference number shown in the illustration, followed by a full description based upon the "NOUN FIRST" method. That is, the noun name of the part is listed first, then the modifying description information which serves to specifically identify the item. For example: PIN, Clevis. Assemblies or groups are shown at the beginning of a parts list and are identified with the letter references A, B, C, etc. Individual parts in these lists have corresponding letters after their description to identify which assembly or group it is used in. Individual parts without identifying letters are used in all the assemblies or group shown at the beginning of the parts list.

Descriptions preceded with an (\*) indicates a serviceable component or attaching hardware for the higher level assembly.

### QUANTITIES (Units per Assy.)

The quantities of each part that are required to complete the assembly. If quantity is (AR), it is understood that the quantity may vary when machine is equipped with certain options. Order quantity as needed.

### HARDWARE

Standard screws, washers, nuts, etc. are not identified by a reference number. These parts are known as COMMON HARDWARE items and appear indented under the major items with which they are used. They should be ordered separately as listed, since they are not component parts of the pieces they attach to.

### HOW TO ORDER REPAIR PARTS

1. Address all orders to your local SKYJACK dealer.
2. Specify model and serial number of the work platform (found on the serial number plate).
3. List the quantity needed.
4. List the length needed (if bulk item).
5. List the part number and description as shown in this manual for each item.
6. Show billing and shipping address and name of individual if possible.
7. Suggest best routing.

CUSTOMER \_\_\_\_\_

DEALER \_\_\_\_\_

MODEL NUMBER \_\_\_\_\_

SERIAL NUMBER \_\_\_\_\_

DATE PURCHASED \_\_\_\_\_

**USE ONLY SKYJACK AUTHORIZED REPLACEMENT PARTS!**

CLICK HERE TO **DOWNLOAD** THE COMPLETE MANUAL

- Thank you very much for reading the preview of the manual.
- You can download the complete manual from: [www.heydownloads.com](http://www.heydownloads.com) by clicking the link below

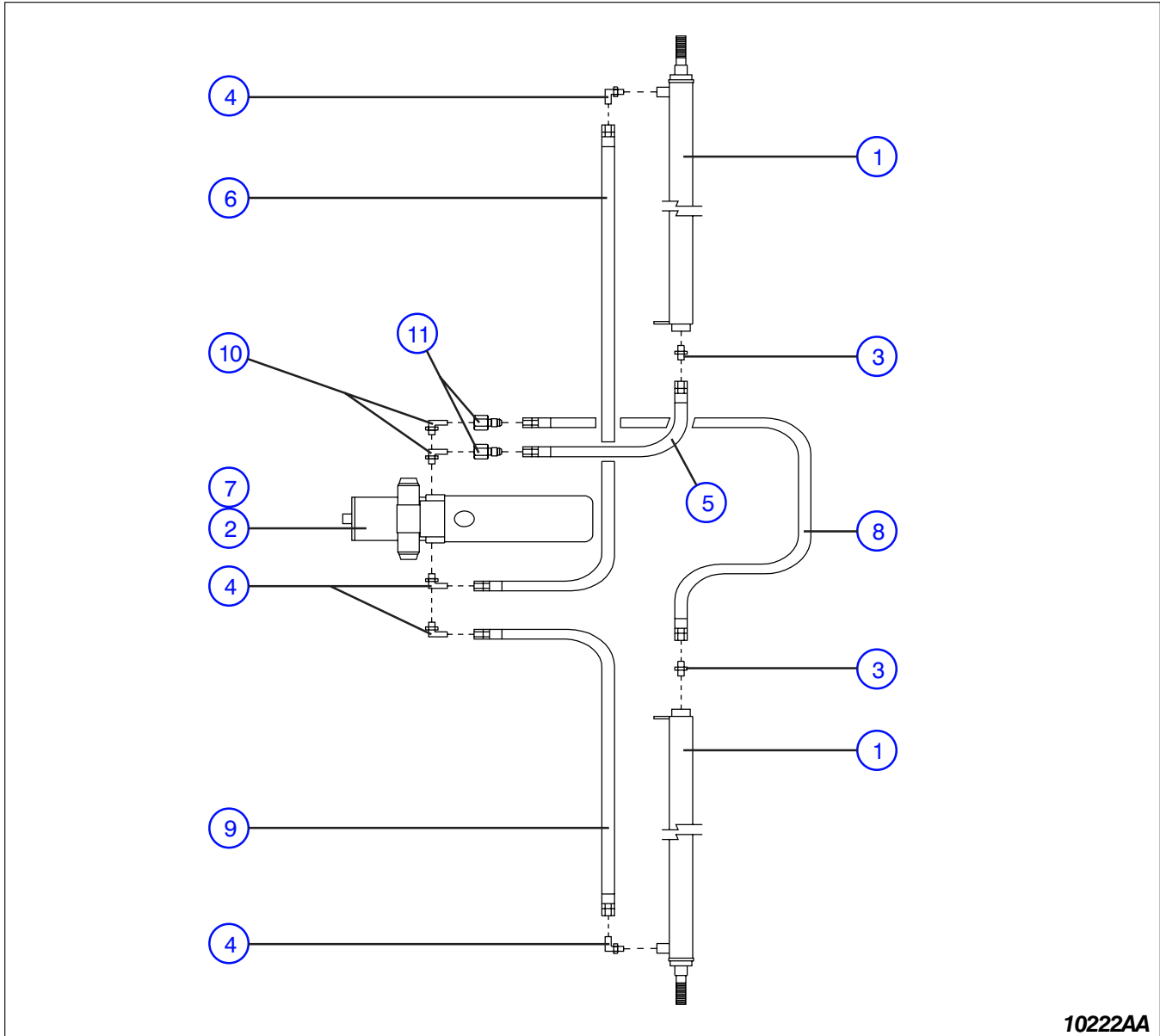


- Please note: If there is no response to CLICKING the link, please download this PDF first and then click on it.

CLICK HERE TO **DOWNLOAD** THE COMPLETE MANUAL

**Figure 6-4. Hydraulic Hose Connections - Powered Extension Platform  
(Machines With Two Extension Platforms)**

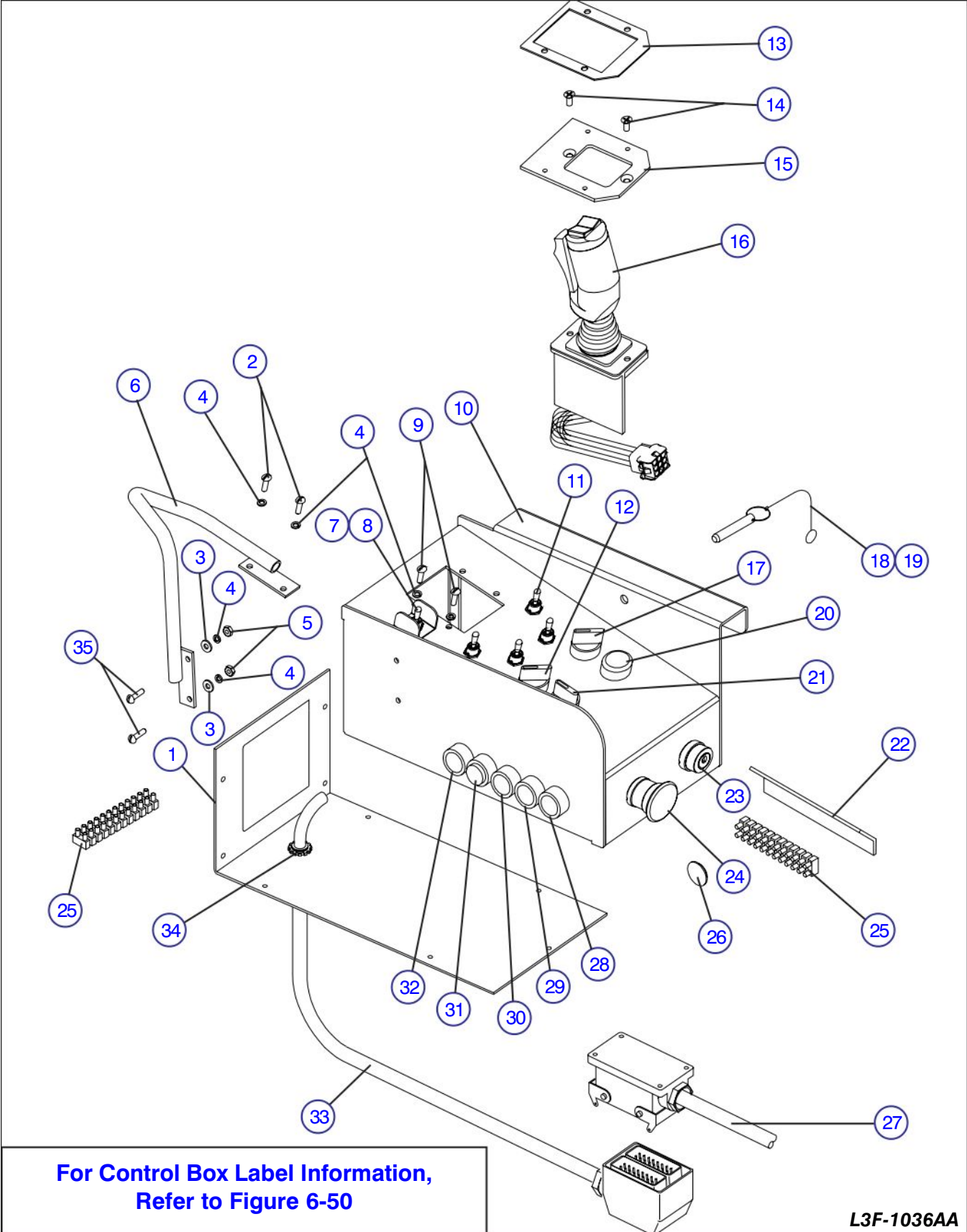
AL



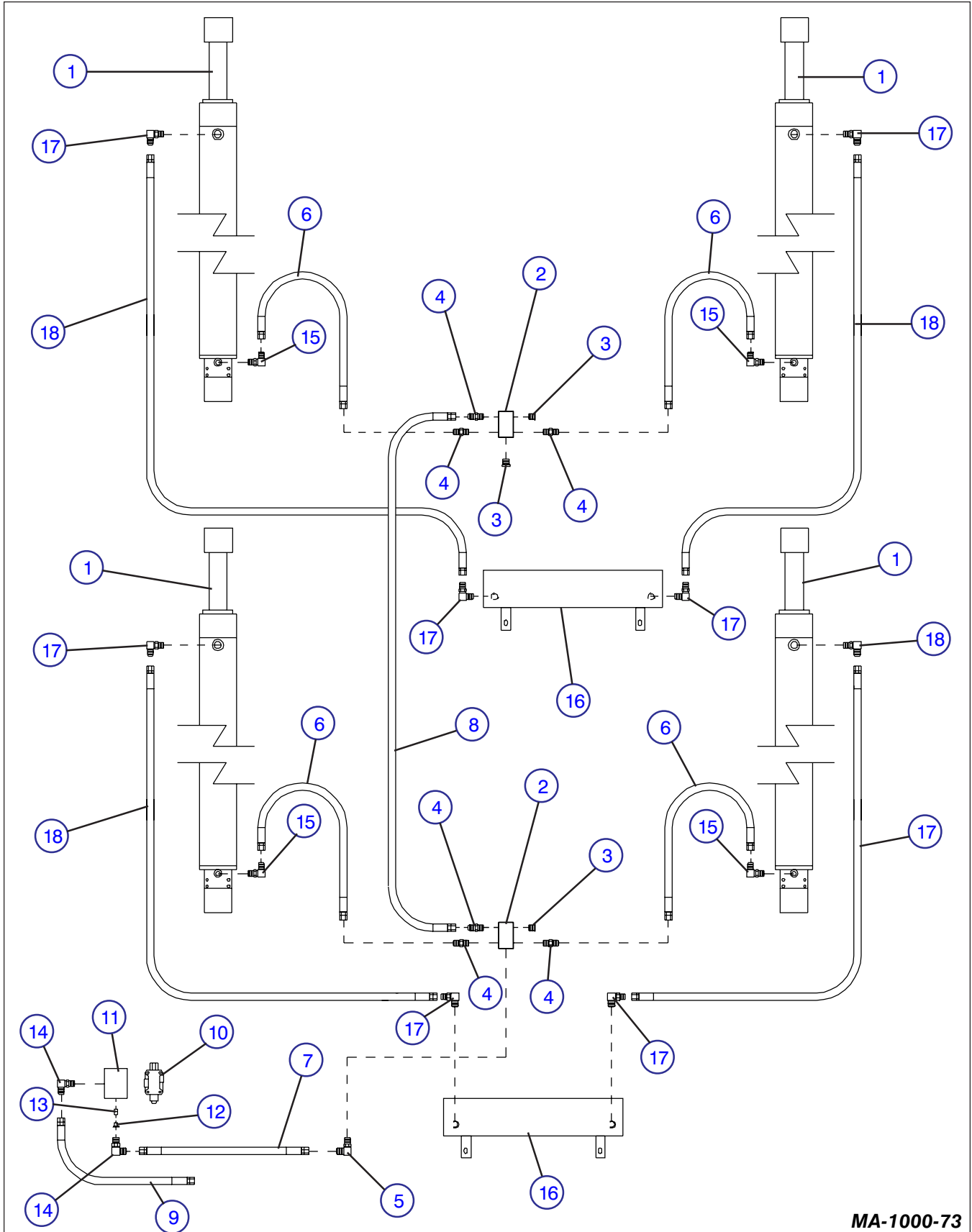
10222AA

Index No.	Skyjack Part No.	Qty.	Description
1	(Ref.)	2	CYLINDER ASSEMBLY, Powered extension platform (For components, refer to Figure 6-6A or 6-6B.)
2	(Ref.)	1	POWER UNIT ASSEMBLY, 12VDC (For components, refer to Figure 6-2.)
3	103069	2	FITTING, Connector #6orb-#6
4	103073	4	FITTING, Elbow 90° #6orb-#6
5	102473	1	HOSE ASSEMBLY, Front cylinder extend 47" lg.
6	102616	1	HOSE ASSEMBLY, Front cylinder retract 105" lg.
7	111291	1	BLOCK, Rear extension platform valve manifold
8	109415	1	HOSE ASSEMBLY, Rear cylinder extend 14-1/2" lg.
9	102559	1	HOSE ASSEMBLY, Rear cylinder retract 62" lg.
10	114518	1	FITTING, Elbow 90° #6orb-#4 Pipe
11	118647	1	FITTING, Adapter #6 - #4 Pipe

**Figure 6-8B. Control Box Assembly**  
*(Used On Machines With Serial Numbers 50772 & Above)*

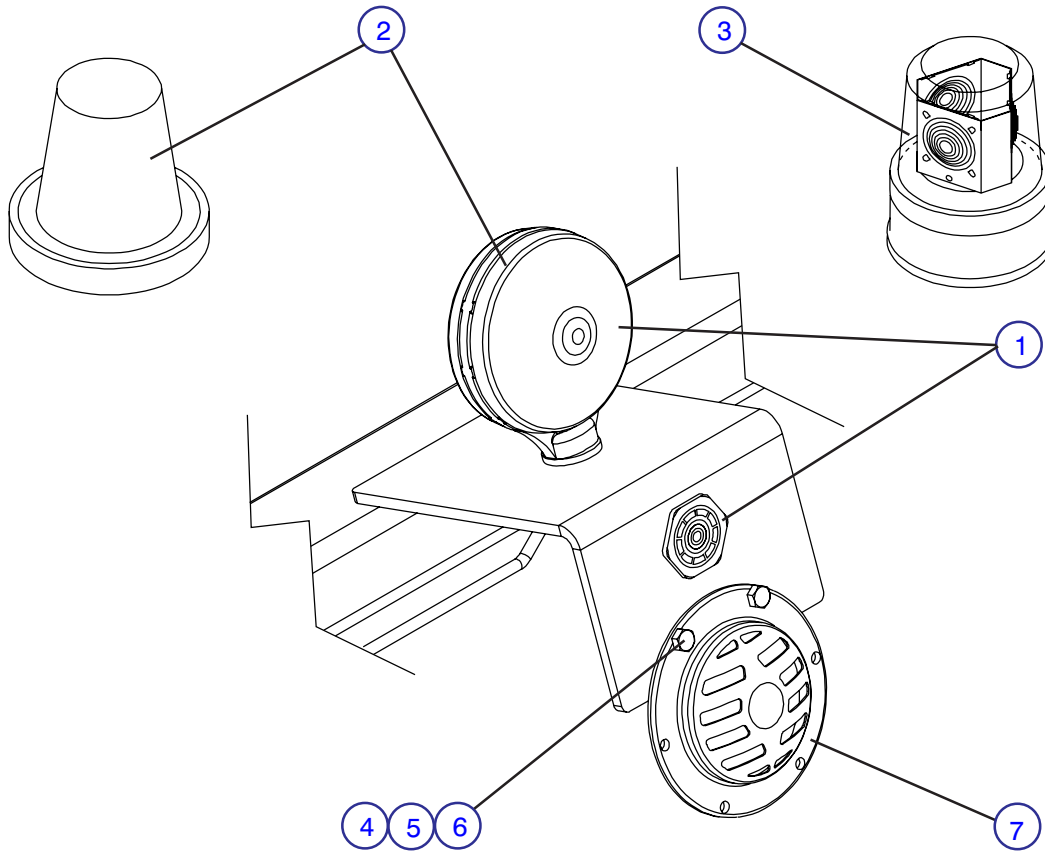


**Figure 6-11A. Hydraulic Hose Connections - Scissors  
(Machines With Serial Number 5864 And Below)**



MA-1000-73

**Figure 6.14A. Horn, Light & Beeper Assemblies  
(Machines with Serial Numbers 51369 and Below)**



10313AA

**Figure 6-16B. Hydraulic Hose Connections - Base  
(Machines With Serial Number 50340 And Above)**

Index No.	Skyjack Part No.	Qty.	Description
1	(Ref.)	1	MANIFOLD ASSEMBLY, Main (For Components Refer to Figure 6-29.)
2	114821	1	TUBE, Suction
3	112381	3	KIT, U-Bolt
4	114326	8	CLAMP, Hose 1-1/4"
5	119860	1	HOSE, Suction 1-1/4" diameter x 73" lg.
6	119859	1	HOSE, Suction 1-1/4" diameter x 8.5 lg.
7	114325	2	FITTING, Pump
8	110460	1	PUMP, Dual inlet (Kubota Diesel/Wisc./Ford)
	114201	1	PUMP, Dual Inlet (Kubota Gas/Dual Fuel)
9	120054	2	FITTING, Elbow 90° #10orb-#8
10	115760	2	HOSE ASSEMBLY, Return 190" lg.
11	120055	1	HOSE, Manifold return 1" x 33" lg.
12	103320	2	CLAMP, Gear #16
13	107752	1	CYLINDER, Cushion
14	106554	1	FITTING, Reducer #4P-#6orb
15	103245	1	FITTING, Tee #4P-#4P-#4P
16	103324	2	FITTING, Elbow 90° #4P-#6
17	(Ref.)	1	FREE-WHEELING VALVE ASSEMBLY
	103615	1	• BLOCK, Valve manifold
	112218	1	• VALVE, N.O. (free-wheeling)
	103613	1	• COIL, 12 Volt
18	103072	2	FITTING, Tee #6orb-#6-#6
19	102522	1	HOSE ASSEMBLY, Free-wheeling valve to cushion cylinder 24-1/2" lg.
20	102574	1	HOSE ASSEMBLY, Motor to cushion cylinder 21" lg.
21	102473	1	HOSE ASSEMBLY, Free-wheeling valve to motor 47" lg.
22	(Ref.)	1	MOTOR, Hydraulic drive (For Components Refer to Figure 6-21A., 6-21B., or 6-21C.)
23	(Ref.)	1	MOTION CONTROL VALVE ASSEMBLY (For Components, Refer to Figure 6-17)
24	110554	1	FITTING, Tee <b>(Used On Machines with Serial # 50643 &amp; Below)</b>
25	102659	1	FITTING, Connector #8orb-#8
26	106170	2	FITTING, Tee #8-orb-#8
27	104436	2	FITTING, Reducer #10orb-#8orb
28	119013	1	HOSE ASSEMBLY, M.C.V. drain 40" lg.
29	121855	2	HOSE ASSEMBLY, M.C.V. to motor 28.75" lg.
30	119014	2	HOSE ASSEMBLY, M.C.V. to main manifold 60" lg.
31	102577	1	HOSE ASSEMBLY, Manual lowering 33" lg.
32	(Ref.)	1	CYLINDER ASSEMBLY, Steer (For Components Refer to Figure 6-19A or 6-19B.)
33	114578	3	FITTING, Elbow 90° #6orb-#6
34	106291	2	HOSE ASSEMBLY, Steering 102" lg.
35	(Ref.)	2	CYLINDER ASSEMBLY, Brake (For Components Refer to Figure 6-23.)
36	103348	1	FITTING, Straight

**Parts list continued on the following page.**

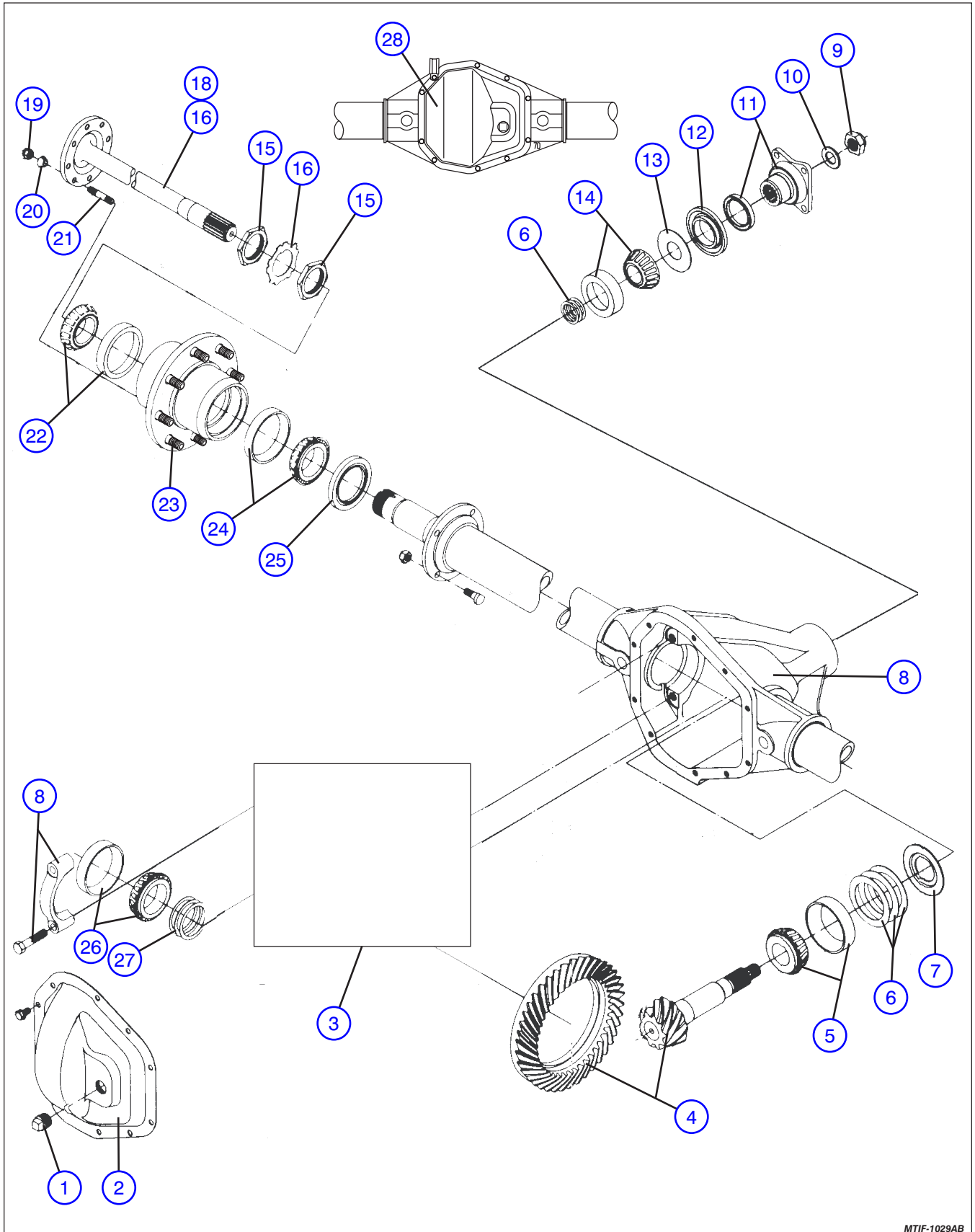
Figure 6-20. Front Drive Axle Assembly (4-wheel Drive Machines)

AL

Index No.	Skyjack Part No.	Qty.	Description
<b>A</b>	115602	-	MODIFIED AXLE ASSEMBLY, Front drive (5.13 ratio)
1	120845	1	• WELDMENT, Steering arm Support (Must use Castle Nut #120191)
2	120191	1	• NUT, Tie Rod Castle Hex
			<b>Both part numbers 120845 &amp; 120191 MUST be ordered for Machines with Serial numbers 50204 &amp; Below</b>
3	122071	1	• PIN, Cotter 1/8 X 2"
4	103264	1	• WASHER, Bronze 1" x 2" x 1/8" thk.
5	102028	4	• SPACER, 3/4" x 1" x 7/16" thk.
6	(Ref.)	1	• CYLINDER ASSEMBLY, Steer
			(For components, refer to Figure 6-19A or 6-19B.)
7	102030	1	• WELDMENT, Steering arm
<b>B</b>	115728	1	• AXLE ASSEMBLY, Front drive (DANA #070BA502-14)
8	108394	1	• • COVER, Carrier
9	113888	1	• • PLUG, Carrier cover
10	113891	12	• • BOLT, Drive gear
11	113908	1	• • DIFFERENTIAL ASSEMBLY
12	115371	1	• • • GEAR SET, Internal differential
13	113909	AR	• • • KIT, Disc and plate
14	113910	8	• • • BOLT, Differential case
15	117130	1	• • DRIVE GEAR AND PINION SET
16	113879	1	• • SLINGER, Inner pinion
17	113880	1	• • BEARING ASSEMBLY, Inner pinion
18	113881	AR	• • KIT, Pinion adjusting shim
19	113882	1	• • SLINGER, inner pinion bearing
20	113901	AR	• • KIT, Spindle bearing and seal
21	708440	2	• • SLINGER
22	110070	1	• • AXLE SHAFT ASSEMBLY, LH - 37" long (35 teeth spline) (Includes item #24)
	129974	1	• • AXLE SHAFT ASSEMBLY, LH - 37" long (30 teeth spline) (Includes item #24)
23	115303	1	• • AXLE SHAFT ASSEMBLY, RH - 47" long (35 teeth spline) (Includes item #24)
	129975	1	• • AXLE SHAFT ASSEMBLY, RH - 47" long (30 teeth spline) (Includes item #24)
24	113900	2	• • JOINT, Universal drive
25	113897	2	• • CAP, Lower king pin
26	115373	1	• • TIE ROD ASSEMBLY
	\$	1	• • • TIE ROD
	113792	1	• • • END, Tie rod LH
	113793	1	• • • END, Tie rod RH
27	108392	AR	• • KIT, King pin seal and bearing
28	113899	2	• • CAP, Upper king pin
29	113898	2	• • GASKET, Upper king pin
			<b>Parts list continued on the following page.</b>

Figure 6-22. Rear Drive Axle Assembly

AM



MTIF-1029AB

**Figure 6-26. Hydraulic/Electric Side Cabinet (Continued)**

Index No.	Skyjack Part No.	Qty.	Description
			<b>Parts list continued from the previous page.</b>
16	108796	1	PLATE ASSEMBLY, Emergency battery mounting
	103628	4"	• SEAL, Foam
17	108790	1	BRACKET, Emergency lowering switch <b>(ANSI/SIA and CSA)</b>
18	(Ref.)	1	SWITCH ASSEMBLY, Emergency lowering
	102765	1	• HEAD, Switch (red)
	103100	1	• BASE, Contact
	103141	1	• BLOCK, N.O. Contact
19	109443	1	LABEL, Emergency lowering
20	113456	1	SPACER, Emergency battery (plywood)
21	113455	1	PAD, Emergency battery (plywood)
22	108789	1	BATTERY, 12 Volt #12N14-3A
23	108788	1	RESISTOR, 3 Ohm/100W
	132791	1	• CLAMP, Plastic 3/4"
24	102120	2	PLATE, Top <b>(Welded on cabinet with Scissor Guard Option )</b>
25	105941	2	BRACKET, Side <b>(Welded on cabinet with Scissor Guard Option )</b>
26	111282	1	FUSE, 100 Amp <b>(Equipped with Powered Extension only)</b>
27	103068	2	INSULATOR, Fuse <b>(Equipped with Powered Extension only)</b>
28	111787	1	CONTACTOR, 12 Volt <b>(Equipped with Powered Extension only)</b>
	102921	1	• DIODE, 6 Amp 1000PIV
	104698	2	• BOLT, Machine #10-32 x 3/4" lg.
	104185	2	• WASHER, Lock #10
	104694	2	• WASHER, Flat #10
	104003	2	• NUT, #10-32
			<b>Items 29 thru 36 are for (CE) machines with Powered Extension Platform Emergency Retraction Option.</b>
29	117649	1	BRACKET, Emergency lowering retraction <b>(CE)</b>
30	117632	1	LABEL, Emergency retraction
31	(Ref.)	1	SWITCH ASSEMBLY, Emergency retraction
	102765	1	• HEAD, Switch (red)
	103100	1	• BASE, Contact
	103141	1	• BLOCK, N.O. Contact
32	111787	1	CONTACTOR, 12 Volt
	102921	1	• DIODE, 6 Amp 1000PIV
33	117630	1	PLATE, Contactor/relay mounting
34	103271	1	SOCKET, Double relay
35	103207	1	RELAY, 12 Volt DPDT
36	102874	1-1/2"	TRACK, Relay mounting
	102986	2	• CLIP, Relay
37	120183	1	COVER, Relay panel
38	120176	5	SPACER, Relay panel cover
39	120177	5	STUD, 1/4-20 x 3-1/2" lg.
	120175	5	• NUT, Wing 1/4-20
	103980	5	• NUT, hex 1/4-20
40	117363	1	PLATE, Manual Box Mounting
41	117293	1	BOX, Manual
42	132792	AR	CLAMP, Cable Bundles (7/8")
	132793	AR	CLAMP, Cable Bundles (1 3/8")
L	(Ref.)	-	LABEL, Manual Box <b>(Refer to Figure 6-51)</b>

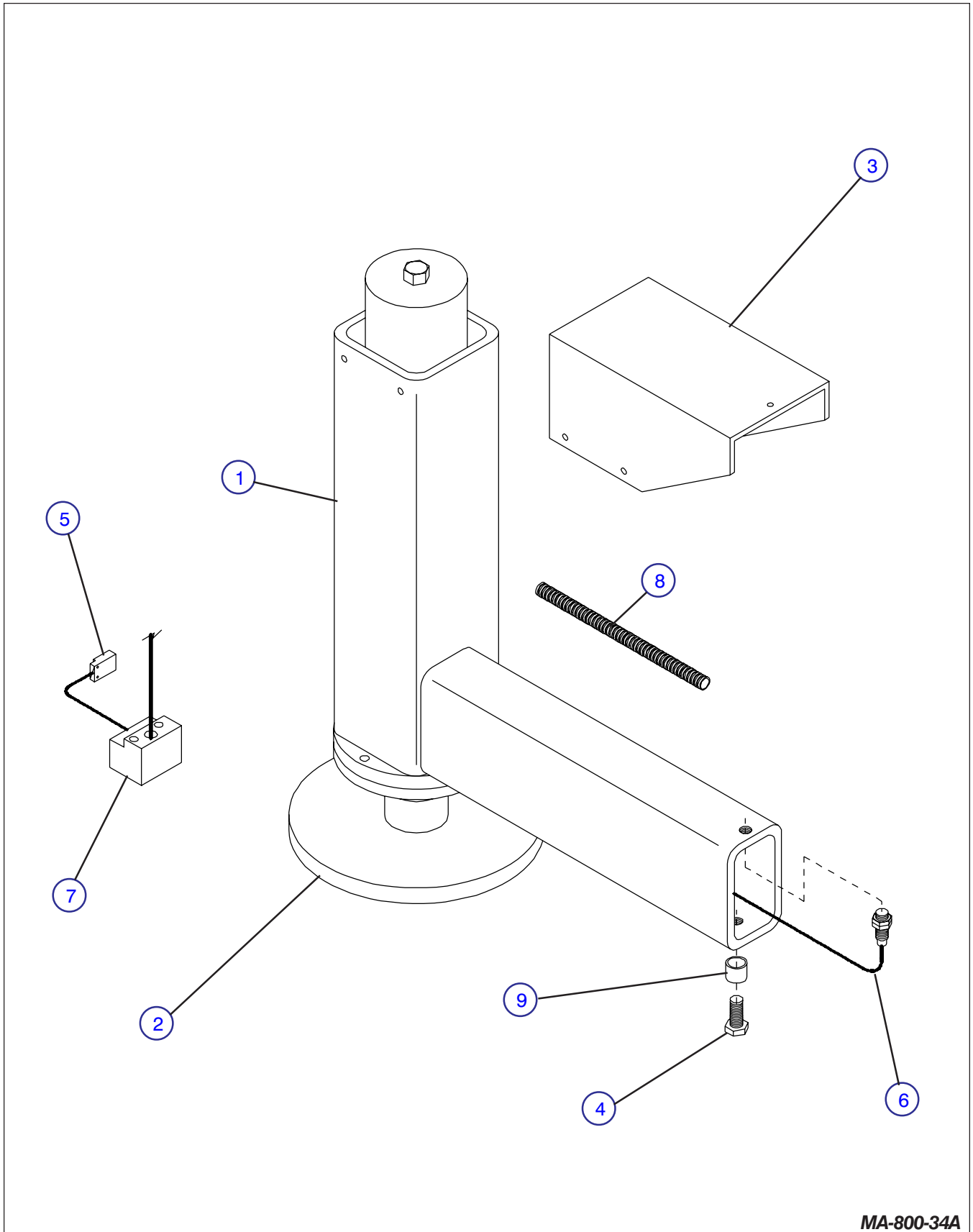
**Figure 6-28D. Base Control/Electrical Panel Assembly - ANSI/SIA And CSA  
(Machines With Serial Number 5900 And Above) (Outrigger Mechanical Limit Switches)**

Index No.	Skyjack Part No.	Qty.	Description
1	115784	1	PANEL, Base control/electrical
2	103011	2	STRIP, 12 Pole terminal
3	117326	2	CIRCUIT BREAKER, 20 Amp
4	103336	1	HOURMETER
5	(Ref.)	1	SWITCH ASSEMBLY, Up push-button
	102851	1	• HEAD, Push-button switch
	103100	1	• BASE, Contact
	103141	1	• BLOCK, N.O. Contact
6	(Ref.)	1	SWITCH ASSEMBLY, Down push-button
	102851	1	• HEAD, Push-button switch
	103100	1	• BASE, Contact
	103141	1	• BLOCK, N.O. Contact
7	103743	1	FLASHER, 12 Volt
8	132793	1	CLAMP, Flasher
9	102874	AR	TRACK, Relay mounting (cut from 39-1/2")
	102986	60	• CLIP, relay mounting
10	102479	21	SOCKET, Single relay
11	103271	9	SOCKET, Double relay
12	103316	21	RELAY, 12 Volt SPDT
	121459	1	• SPRING, Hold down single
13	103207	9	RELAY, 12 Volt DPDT
	121460	1	• SPRING, Hold down dual
14	103319	1	CAPACITOR, 50 Volt
15	102921	4	DIODE, 6 Amp 1000PIV
16	103014	1	GROMMET, Rubber
17	104313	1	DIODE ASSEMBLY WITH 4 DIODES (D15A-1, D16A-1, D23A, D24A)
18	105657	1	DIODE ASSEMBLY WITH 2 DIODES (D15A-2, D16A-2)
19	105964	1	DIODE ASSEMBLY WITH 8 DIODES (D71A thru D78A)
20	116409	1	HARNESS, Main manifold wiring
	700166	6	• DIODE, Flyback, 1 amp 400PIV
21	115284	1	CABLE ASSEMBLY, 32 Pole electrical panel <b>(All Model 9250) (Model 9250A with horn, generator and/or outrigger options)</b>
	114484	1	CABLE ASSEMBLY, 16 Pole electrical panel <b>(Model 9250A w/no options)</b>
	115274	90"	• CABLE, 18/30
	114476	1	• CONNECTOR ASSEMBLY, 32 Pole female
	114477	1	• CONNECTOR ASSEMBLY, 16 Pole female
22	117307	1	HARNESS, Panel to engine
	119135	1	• KIT, 12 Pole plug connector
23	103012	1	STRIP, 12 Pole terminal
24	(Ref.)	4	CORD ASSEMBLY, Outrigger
	103255	AR	• CORD, 18/4 (Left Rear 198" Ig.;Right Rear, 240" Ig.; Right Front, 192" Ig.;Left Front, 154" Ig.)
	107711	1	• CONNECTOR ASSEMBLY, 5 Pole female
25	(Ref.)	-	TILT SWITCH ASSEMBLY (Optional) <b>(For Components, Refer to Figure 6-26)</b>
26	(Ref.)	1	HARNESS, Outrigger manifold <b>(For Components Refer to Figure 6-42B.)</b>
27	(Ref.)	1	CORD ASSEMBLY, Tilt switch
	119131	1	• KIT, 4 Pole plug connector
28	121050	AR	FERRULE, 16GA Red
	115401	AR	FERRULE, 18GA White
L	(Ref.)	-	LABEL, Electrical Panel <b>(Refer to Figure 6-51)</b>

**Figure 6-34. Engine And Related Parts - Ford Gasoline Engine (Continued)**

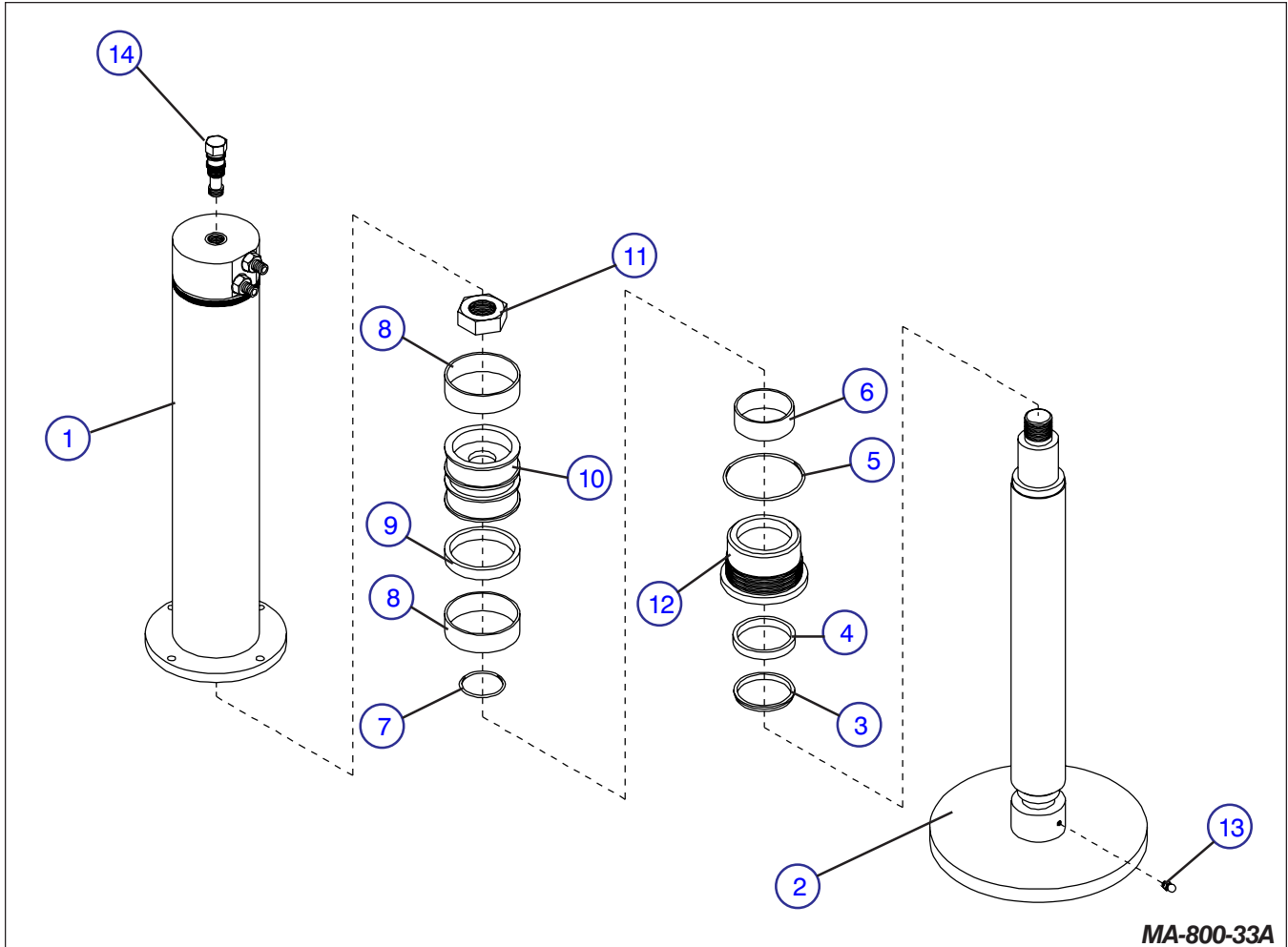
Index No.	Skyjack Part No.	Qty.	Description
			<b>Parts list continued from the previous page.</b>
27	123368	1	• CARRIER ASSEMBLY, Hose (23 links)
	122834	1	• • BRACKETS, E-Chain Mounting (2 Pieces)
	122998	1	• • • BRACKET, E-Chain Mounting (Male)
	122999	1	• • • BRACKET, E-Chain Mounting (Female)
	122835	AR	• • SEPARATOR, HOSE Carrier
	122836	AR	• • LINK, Hose Carrier
			<b>Use CARRIER ASSEMBLY #111395 (17 links) for Machines with Serial 50696 and below.</b>
			• Uses SEPARATOR #114199
			• Uses LINK #113860
			• Uses Brackets #113853
28	115214	1	• MOUNT, Ford Air Cleaner
29	115526	1	• FORD AIR INTAKE ASSEMBLY
30	115525	1	• • HOSE, Air Cleaner (short section)
31	104528	4	• • CLAMP, Hose
32	116093	1	• • TUBE, Air intake
33	107884	1	• • HOSE, Air 1/2"
34	115525	1	• • HOSE, Air Cleaner (long section)
35	115901	1	• JOINT, Throttle ball (carb)
36	115900	1	• ROD, 1/4 - 28 x 9" lg.
37	115902	1	• JOINT, Throttle ball (actuator)
38	115899	1	• ARM, Actuator
39	123000	1	• CAP, Radiator
40	123001	1	• PLUG, Radiator Drain
41	123006	2	• BOLT, Carriage 7/16 - 14 x 1.25
42	123007	2	• MOUNT, Engine Vibration
43	123008	2	• WASHER, Flat 7/16
44	123009	2	• NUT, 7/16 - 14
45	123002	1	• BRACKET, Radiator Support
46	123004	1	• TUBE, Radiator to Water Pump
47	123005	AR	• HOSE, Radiator
48	123012	1	• Nut, 5/16 - 18
49	123011	1	• SPACER, .50 I.D. x .88 O.D. x .56 lg.
50	123010	1	• BOLT, Carriage 5/16 - 18 x 1.5
51	123003	1	• BRACE, Radiator
52	125716	1	PLATE, Ignition Mounting
	125894	2	SCREW, Machine 10 - 32 x 3/4 UNC
53	125721	1	SENSOR, Map
	114639	2	SCREW, PHS 10 - 32 x 1 1/2
	104185	2	WASHER, Lock #10 NOM
	104694	2	WASHER, Flat #10 SAE
	104003	2	NUT, 10 - 32
54	125723	1	MODULE, Ignition control
	104000	3	WASHER, Lock 1/4 NOM x 0.06
	124562	3	BOLT, Hex head 12 - 24 x 1/2"
55	125726	1	HARNESS, Ford engine
	120658	1	• FUSE, 10 Amp
	104003	1	NUT, 10 - 32
	104185	1	WASHER, Lock #10 NOM
	104694	1	WASHER, Flat #10 SAE
			<b>NOTE: For Dual Fuel System components, refer to Figure 6-36.</b>

**Figure 6-39A. Hydraulic Outrigger Option - Leg Assembly  
(Machines With Serial Number 5899 And Below) (Outrigger Proximity Switches)**



MA-800-34A

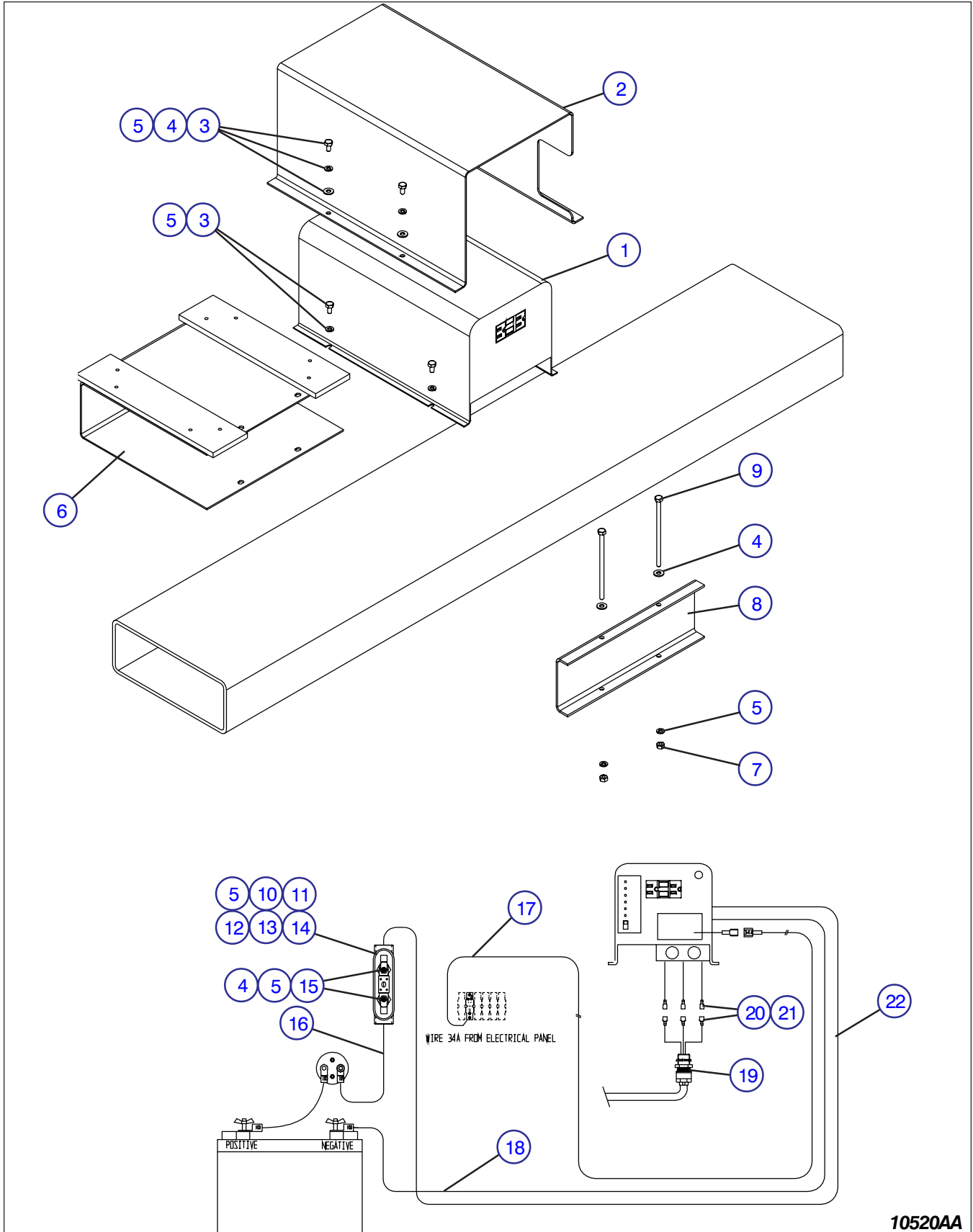
**Figure 6-41A. Hydraulic Outrigger Option - Cylinder Assembly  
(Machines With Serial # 5899 And Below)**



MA-800-33A

Index No.	Skyjack Part No.	Qty.	Description
	109563	-	CYLINDER ASSEMBLY, Outrigger
1	109561	1	• HOUSING, Cylinder
2	107329	1	• ROD, Cylinder
*3	106229	1	• WIPER, Rod
*4	106228	1	• SEAL, Rod
*5	106223	1	• O-RING, Front gland
*6	106227	1	• RING, Rod wear
*7	106466	1	• O-RING, Piston
*8	106220	2	• RING, Piston wear
*9	106225	1	• SEAL, Piston
10	106461	1	• PISTON
11	106230	1	• NUT, Lock 1-1/4-12 grade C
12	106460	1	• GLAND, Front head
13	102027	1	• FITTING, Grease 1/8P
14	104115	1	VALVE, Pilot check (not part of cylinder)
*	104355	AR	KIT, Seal repair * Part of Seal Repair Kit

**Figure 6-46. 1500 Watt Inverter Option**



10520AA

CLICK HERE TO **DOWNLOAD** THE COMPLETE MANUAL

- Thank you very much for reading the preview of the manual.
- You can download the complete manual from: [www.heydownloads.com](http://www.heydownloads.com) by clicking the link below



- Please note: If there is no response to CLICKING the link, please download this PDF first and then click on it.

CLICK HERE TO **DOWNLOAD** THE COMPLETE MANUAL