



# **Maintenance and Service Guide**

Compaq 800 Notebook Series

Compaq Presario 3000 Series Mobile PC

Document Part Number: 307503-002

**January 2003**

This guide is a troubleshooting reference used for maintaining and servicing the notebook. It provides comprehensive information on identifying notebook features, components, and spare parts, troubleshooting notebook problems, and performing notebook disassembly procedures.

CLICK HERE TO **DOWNLOAD** THE COMPLETE MANUAL

- Thank you very much for reading the preview of the manual.
- You can download the complete manual from: [www.heydownloads.com](http://www.heydownloads.com) by clicking the link below



- Please note: If there is no response to CLICKING the link, please download this PDF first and then click on it.

CLICK HERE TO **DOWNLOAD** THE COMPLETE MANUAL

**Table 1-2  
Compaq 800 Models (Continued)**

The following Compaq 800 models use config. code **LF55**.

C800	P	200	X3	20	D	C	12	E	
Asia Pacific			317495-371			Australia/New Zealand		317495-011	

The following Compaq 800 model uses config. code **LLNG**.

C800	P	180	X4	30	W	C	25	E	
Hong Kong			317475-AC1						

The following Compaq 800 model uses config. code **LLNH**.

C800	P	180	X4	30	V	C	12	E	
Taiwan			317476-AB1						

The following Compaq 800 model uses config. code **LLNC**.

C800	P	180	X4	20	V	C	12	E	
Asia Pacific			317472-371						

The following Compaq 800 models use config. code **LLN7**.

C800	P	180	X4	20	D	C	12	E	
Asia Pacific			315611-371			Korea		315611-AD1	
Australia/New Zealand			315611-011			Taiwan		315611-AB1	
Hong Kong			315611-AC1			Thailand		315611-281	

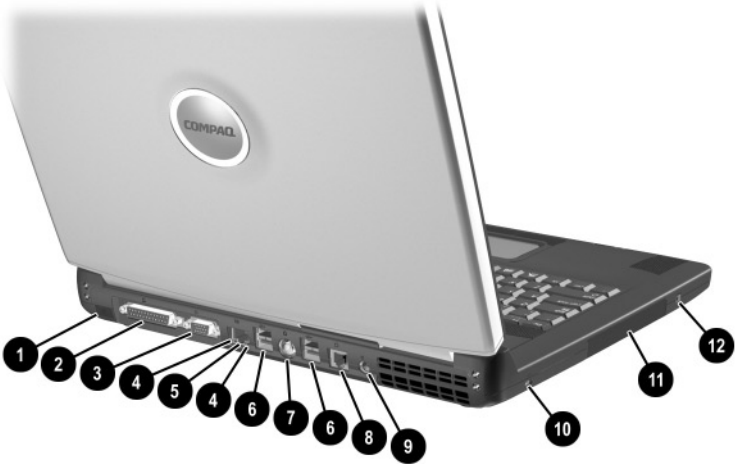
The following Compaq 800 models use config. code **LF54**.

C800	P	180	X3	20	V	C	25	E	
Asia Pacific			309482-371			Australia/New Zealand		309482-011	

The following Compaq 800 models use config. code **LF57**.

C800	P	180	X3	20	D	C	12	E	
Asia Pacific			310535-371			Australia/New Zealand		310535-011	

The notebook rear panel and left side components are shown in Figure 1-3 and described in Table 1-5.



**Figure 1-3. Rear Panel and Left Side Components**

---

**Table 1-5**  
**Rear Panel and Left Side Components**

---

<b>Item</b>	<b>Component</b>	<b>Function</b>
1	Infrared port	Provides wireless communication between the notebook and other infrared-equipped devices using an infrared beam.
2	Parallel connector	Connects a parallel device.
3	External monitor connector	Connects an external monitor or overhead projector.

---

- **Compaq Diagnostics**—A system information and diagnostic utility that is used within your Windows operating system. Use this utility whenever possible to:

- Display system information.
- Test system components.
- Troubleshoot a device configuration problem in Windows 2000, Windows XP Professional, or Windows XP Home.



It is not necessary to configure a device connected to a USB connector on the notebook or an optional docking base.

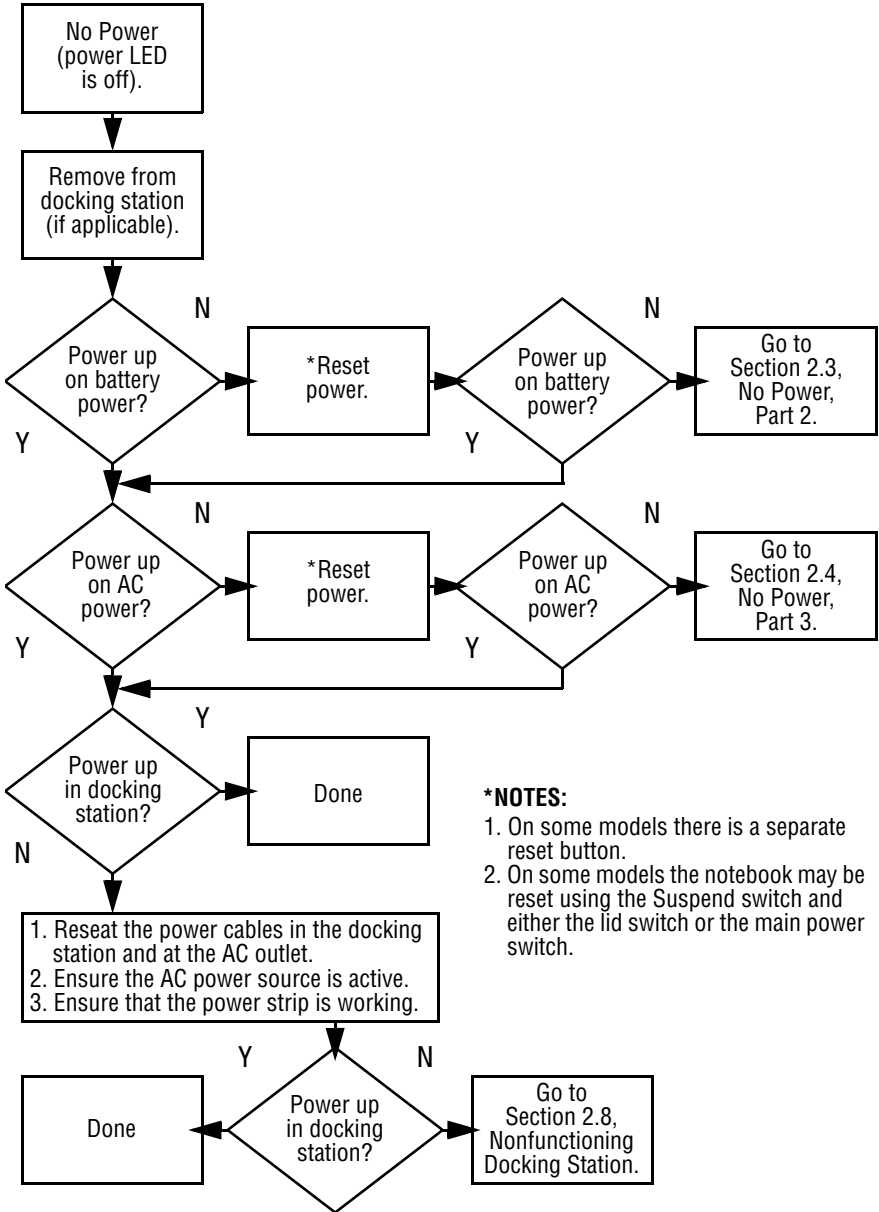
---

## Using Computer Setup

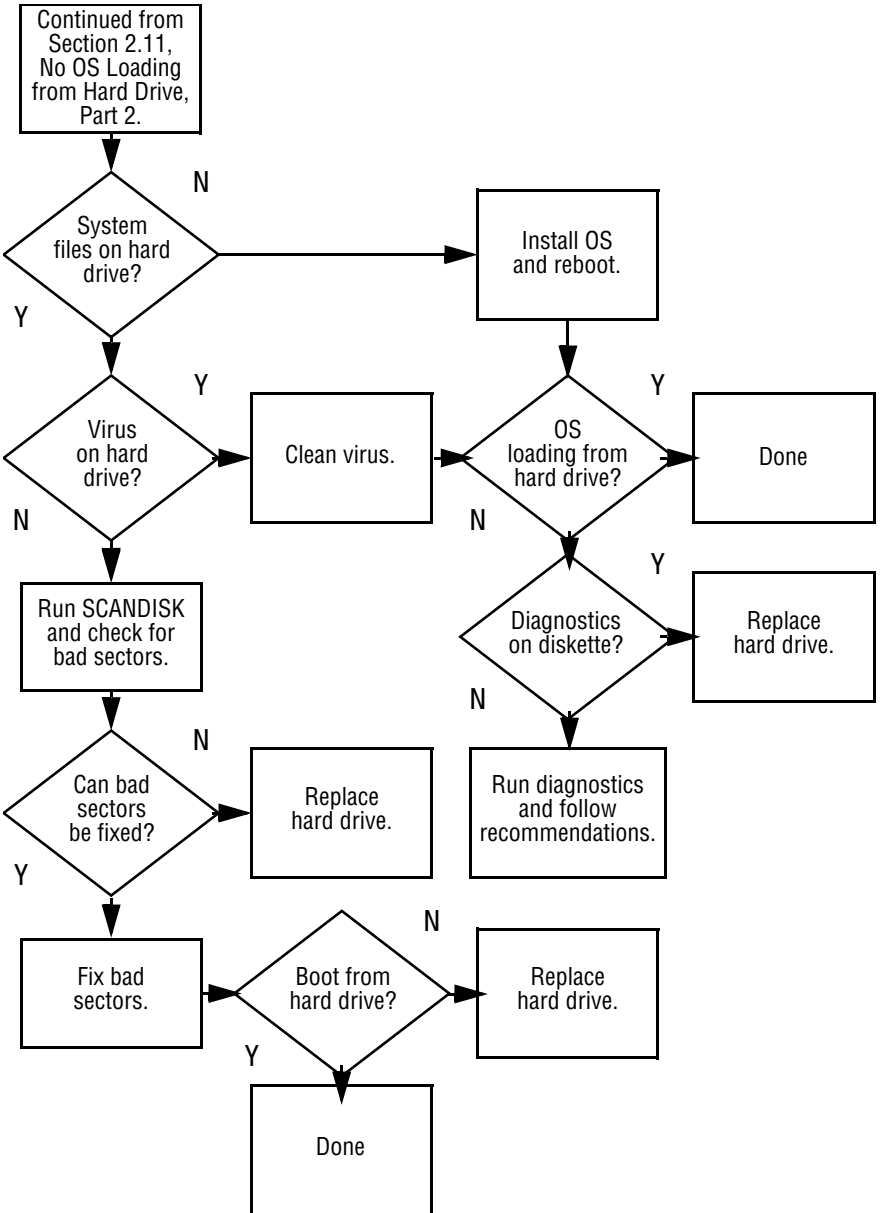
Information and settings in Computer Setup are accessed from the File, Security, or Advanced menus:

1. Turn on or restart the notebook. Press **F10** while the F10 = ROM Based Setup message is displayed in the lower-left corner of the screen.
  - To change the language, press **F2**.
  - To view navigation information, press **F1**.
  - To return to the Computer Setup menu, press **esc**.
2. Select the File, Security, or Advanced menu.
3. To close Computer Setup and restart the notebook:
  - Select File > Save Changes and Exit and press **enter**.
  - or
  - Select File > Ignore Changes and Exit and press **enter**.
4. When you are prompted to confirm your action, press **F10**.

### Flowchart 2.2—No Power, Part 1



**Flowchart 2.12—No OS Loading from Hard Drive, Part 3**



**Table 3-1**  
**Spare Parts: Notebook System Major Components**

<b>Item</b>	<b>Description</b>	<b>Spare Part Number</b>
1	<b>Displays</b>	
	16.0-inch, SXGA, TFT with wireless antenna (for use only with models with config. code LLN2, LLN3, or LLN5)	321941-001
	16.0-inch, SXGA, TFT without wireless antenna (for use only with models with config. code LF51, LF52, LF56, LLN1, LLNB, LMR3, LN64, and LN67)	310652-001
	15.0-inch, XGA, TFT (for use only with models with config. code LLNF, LN63, and LN68)	316746-001
	14.1-inch, XGA, TFT (for use only with models with config. code LLN6, LLN7, LLN8, LLN9, LLNC, LLND, LLNG, LLNH, LMS1, LMS2, LMS3, LMS4, LN65, and LN66)	316745-001
	13.3-inch, XGA, TFT (for use only with models with config. code LN61 and LN62)	310651-001
	<b>Miscellaneous Plastics/Hardware Kit</b> , includes	310659-001
2a	Left hinge cover	
2b	Right hinge cover	
2c	PC Card slot space saver	
2d	Modem cable	
2e	Heat sink mounting bracket	
2f	RTC battery	
2g	Memory expansion compartment cover not illustrated:	
	■ display hinge screw covers (2)	
	■ display bumper pads (2)	
	■ display screw covers (2 round, 2 oblong)	
	■ notebook feet (2 round, 2 oblong)	
3	<b>LED switch cover</b>	311628-001

CLICK HERE TO **DOWNLOAD** THE COMPLETE MANUAL

- Thank you very much for reading the preview of the manual.
- You can download the complete manual from: [www.heydownloads.com](http://www.heydownloads.com) by clicking the link below



- Please note: If there is no response to CLICKING the link, please download this PDF first and then click on it.

CLICK HERE TO **DOWNLOAD** THE COMPLETE MANUAL

**Table 3-3**  
**Spare Parts: Miscellaneous (not illustrated) (Continued)**

Description	Spare Part Number
<b>Mouse, 2 button, carbon</b>	113907-001
<b>Mouse, USB, carbon</b>	164999-001
<b>PC Card Smartcard reader</b>	153994-001
<b>Power cord, 3-wire</b>	
Australia	246959-011
Denmark	246959-081
Europe/Middle East/Africa	246959-021
Italy	246959-061
Japan	246959-291
Korea	246959-AD1
Switzerland	246959-AG1
United Kingdom	246959-031
United States	246959-001
<b>Screw Kit</b> (includes the following screws; refer to Appendix C, "Screw Listing," for more information on screw specifications and usage.)	310658-001
<ul style="list-style-type: none"> <li>■ Torx T8 M2.5 × 16.0</li> <li>■ Torx T8 M2.5 × 7.0</li> <li>■ Phillips M3.0 × 4.0</li> <li>■ Phillips M2.5 × 4.0</li> </ul>	<ul style="list-style-type: none"> <li>■ Phillips M2.0 × 4.5</li> <li>■ Phillips M2.0 × 4.0</li> <li>■ Phillips M2.0 × 13.0</li> </ul>
<b>Security lock</b>	294359-001 and 263537-001

**Table 5-1**  
**Disassembly Sequence Chart (Continued)**

<b>Section</b>	<b>Description</b>	<b># of Screws Removed</b>
5.3 (Continued)	Hard drive	4 to remove hard drive 4 to separate hard drive from hard drive bracket
5.4	Notebook feet	0
5.5	Memory expansion board	2 loosened
5.6	Optical drive	1
5.7	LED switch cover	2
5.8	Keyboard	1
5.9	Heat sink	5 loosened
5.10	Fan	3
5.11	Processor	0
5.12	Display assembly	4
5.13	Top cover	17
5.14	1394 board	1
5.15	Modem board	2
5.16	System board	6
5.17	RTC battery	0

## 5.7 LED Switch Cover

---

### LED Switch Cover Spare Part Number Information

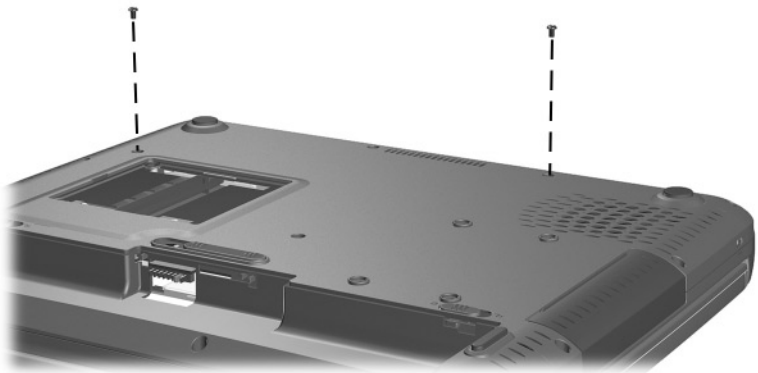
---

LED switch cover

311628-001

---

1. Prepare the notebook for disassembly (Section 5.3).
2. Turn the notebook bottom side up with the front facing you.
3. Remove the two TM2.5 × 7.0 screws that secure the LED switch cover to the base enclosure (Figure 5-10).

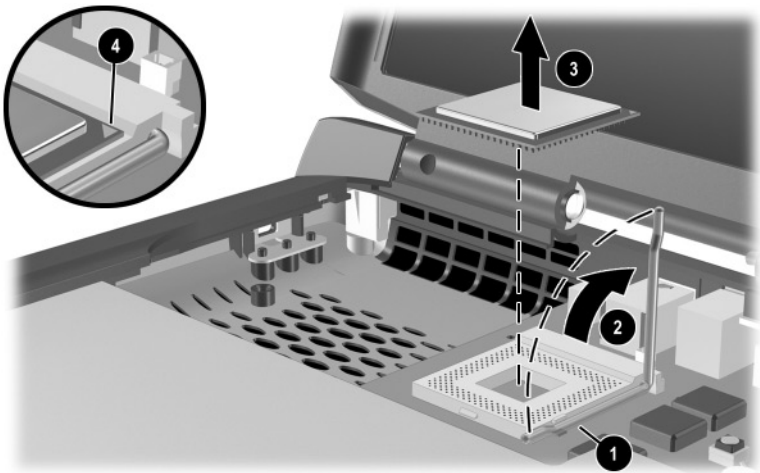


**Figure 5-10. Removing the LED Switch Cover Screws**

5. Slide the front end of the processor release bar slightly to the right ❶ (Figure 5-19).
6. Swing the bar up and to the back ❷.
7. Lift the processor straight up ❸ to remove it.



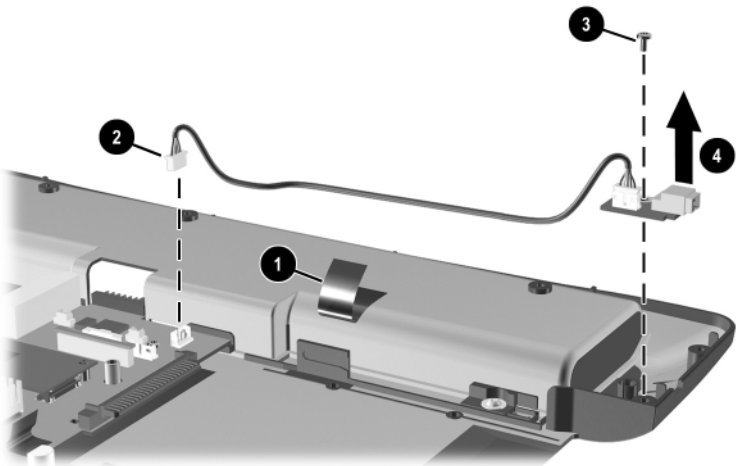
When installing the processor, make sure the gold triangle ❹ is located in the upper right corner.



**Figure 5-19. Removing the Processor**

Reverse the preceding procedure to install the processor.

2. Remove the tape ❶ that secures the 1394 board cable to the base enclosure (Figure 5-26).
3. Disconnect the 1394 board cable from the system board ❷.
4. Remove the PM2.5 × 4.0 screw ❸ that secures the 1394 board to the base enclosure.
5. Remove the 1394 board ❹.



**Figure 5-26. Removing the 1394 Board**

Reverse the preceding procedure to install the 1394 board.

---

**Table 6-3**  
**13.3-inch SXGA, TFT Display**

---

**Dimensions**

Height	20.28 cm	7.98 in
Width	27.03 cm	10.64 in
Diagonal	33.79 cm	13.30 in

---

**Number of colors** Up to 16.8 million

---

**Contrast ratio** 150:1

---

**Brightness** 120+ nit typical

---

**Pixel resolution**

Pitch	0.264 × 0.264 mm
Format	1280 × 1024
Configuration	RGB vertical stripe

---

**Backlight** Edge lit

---

**Character display** 80 × 25

---

**Total power consumption** 4.20 W

---

---

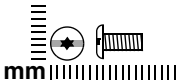
**Table 6-10**  
**System Memory Map**

---

<b>Size</b>	<b>Memory Address</b>	<b>System Function</b>
640 KB	00000000-0009FFFF	Base memory
128 KB	000A0000-000BFFFF	Video memory
48 KB	000C0000-000CBFFF	Video BIOS
160 KB	000C8000-000E7FFF	Unused
64 KB	000E8000-000FFFFFF	System BIOS
15 MB	00100000-00FFFFFF	Extended memory
58 MB	01000000-047FFFFFF	Super extended memory
58 MB	04800000-07FFFFFF	Unused
2 MB	08000000-080FFFFFF	Video memory (direct access)
4 GB	08200000-FFFFFF	Unused
64 KB	FFFF0000-FFFFFFFF	System BIOS

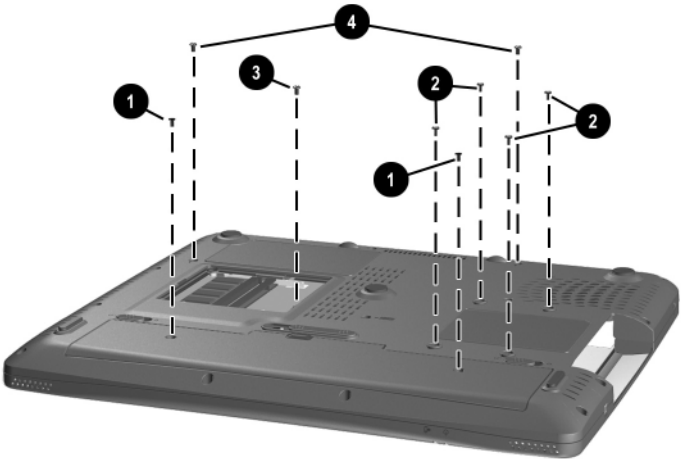
---

**Table C-1**  
**Torx T8 M2.5 × 7.0 Screw**

	Color	Qty.	Length	Thread	Head Width
	Black	24	7.0 mm	2.5 mm	5.0 mm

**Where used:**

- ❶ Two screws that secure the battery bay space saver to the notebook (documented in Section 5.3)
- ❷ Four screws that secure the hard drive to the notebook (documented in Section 5.3)
- ❸ One screw that secures the optical drive to the notebook (documented in Section 5.6)
- ❹ Two screws that secure the LED switch cover to the notebook (documented in Section 5.7)



**Figure C-1. Torx T8 M2.5 × 7.0 Screw Location**

CLICK HERE TO **DOWNLOAD** THE COMPLETE MANUAL

- Thank you very much for reading the preview of the manual.
- You can download the complete manual from: [www.heydownloads.com](http://www.heydownloads.com) by clicking the link below



- Please note: If there is no response to CLICKING the link, please download this PDF first and then click on it.

CLICK HERE TO **DOWNLOAD** THE COMPLETE MANUAL