

Load charts

GMK 5150L

Volume 1

Serial-Nr.



01.06.2017

CLICK HERE TO **DOWNLOAD** THE COMPLETE MANUAL

- Thank you very much for reading the preview of the manual.
- You can download the complete manual from: www.heydownloads.com by clicking the link below

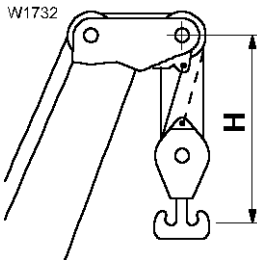


- Please note: If there is no response to CLICKING the link, please download this PDF first and then click on it.

CLICK HERE TO **DOWNLOAD** THE COMPLETE MANUAL

The following table lists data for the hook blocks / hook tackle. The lifting capacities are related to the hooks / hook blocks. The lifting capacity of the crane may vary from this depending on the maximum permissible rope tension and the number of sheaves in the boom head.

When determining the hook height, allowance must be made for the distance between the hook and single-sheave boom top on the main boom or lattice extension.

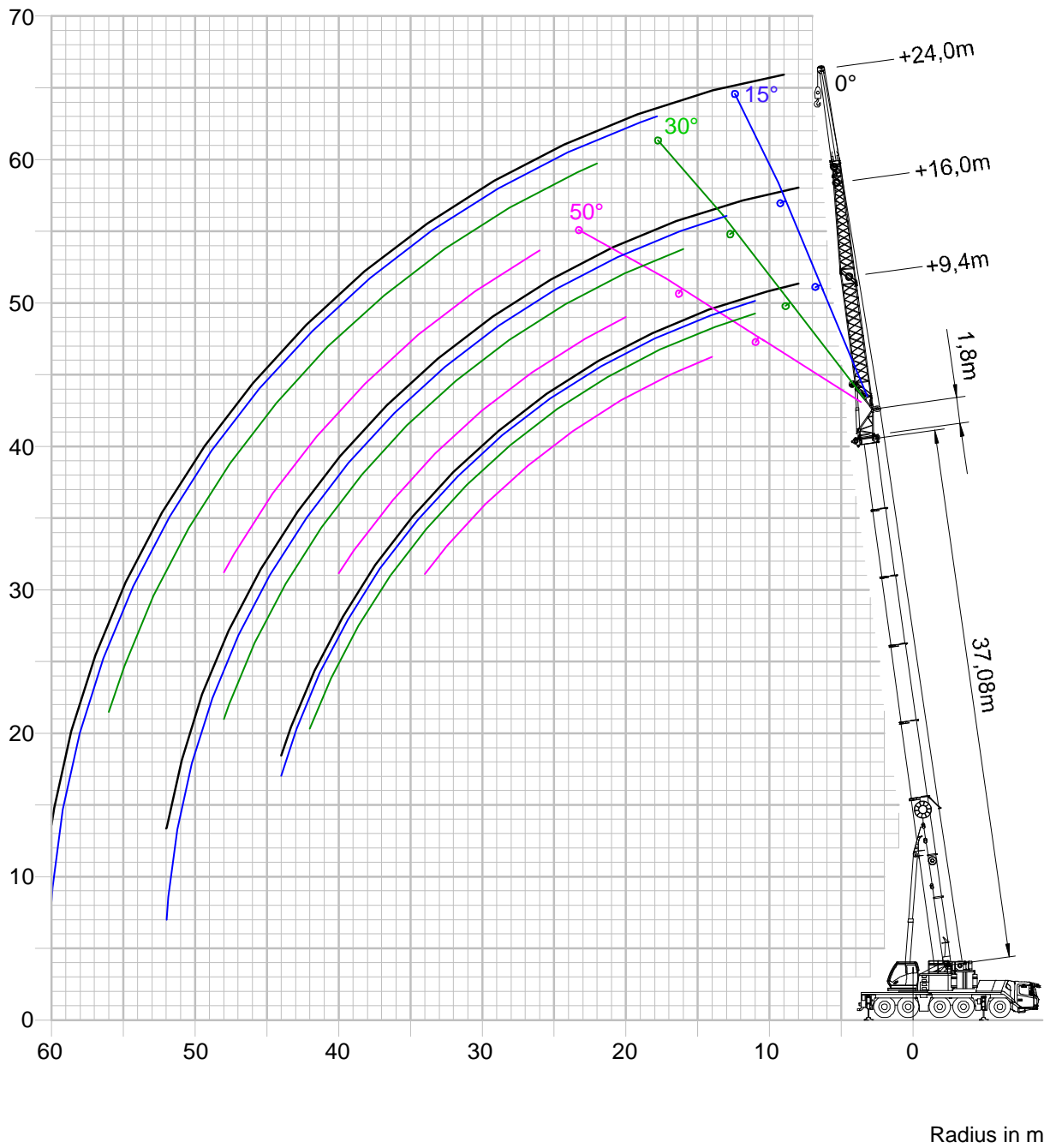


Lifting capacity of the hook block	Number of sheaves/ropes	Dead weight	Distance H at the single-sheave boom top
140 t	8 / 17	1600 kg	3.65 m
95 t	5 / 11	1300 kg	3.30 m
60 t	3 / 7	950 kg	3.30 m
26 t	1 / 3	500 kg	3.20 m
9 t	0 / 1	300 kg 200 kg	2.45 m 2.45 m

Permissible counterweight combinations

The following section shows a variant of the counterweight combinations for versions 1 to 3. See the Operating Instructions for further variants.

Height in m



4 195 546	1.8 + 9.4 m / 30 - 50° (intermediate angle)	8,030 x 7,600 m 360°	1 t 3 - 346
4 195 680	1.8 + 16.0 m / 0° offset	8,030 x 7,600 m 360°	1 t 3 - 348
4 195 684	1.8 + 16.0 m / 0 - 15° (intermediate angle)	8,030 x 7,600 m 360°	1 t 3 - 350
4 195 685	1.8 + 16.0 m / 15 - 30° (intermediate angle)	8,030 x 7,600 m 360°	1 t 3 - 352
4 195 686	1.8 + 16.0 m / 30 - 50° (intermediate angle)	8,030 x 7,600 m 360°	1 t 3 - 354
4 196 250	1.8 + 9.4 m / 0° offset	8,030 x 6,700 m 360°	44.5 t 3 - 358
4 196 254	1.8 + 9.4 m / 0 - 15° (intermediate angle)	8,030 x 6,700 m 360°	44.5 t 3 - 362
4 196 255	1.8 + 9.4 m / 15 - 30° (intermediate angle)	8,030 x 6,700 m 360°	44.5 t 3 - 366
4 196 256	1.8 + 9.4 m / 30 - 50° (intermediate angle)	8,030 x 6,700 m 360°	44.5 t 3 - 369
4 196 390	1.8 + 16.0 m / 0° offset	8,030 x 6,700 m 360°	44.5 t 3 - 372
4 196 394	1.8 + 16.0 m / 0 - 15° (intermediate angle)	8,030 x 6,700 m 360°	44.5 t 3 - 376
4 196 395	1.8 + 16.0 m / 15 - 30° (intermediate angle)	8,030 x 6,700 m 360°	44.5 t 3 - 380
4 196 396	1.8 + 16.0 m / 30 - 50° (intermediate angle)	8,030 x 6,700 m 360°	44.5 t 3 - 383
4 196 260	1.8 + 9.4 m / 0° offset	8,030 x 6,700 m 360°	30.9 t 3 - 386
4 196 264	1.8 + 9.4 m / 0 - 15° (intermediate angle)	8,030 x 6,700 m 360°	30.9 t 3 - 390
4 196 265	1.8 + 9.4 m / 15 - 30° (intermediate angle)	8,030 x 6,700 m 360°	30.9 t 3 - 394
4 196 266	1.8 + 9.4 m / 30 - 50° (intermediate angle)	8,030 x 6,700 m 360°	30.9 t 3 - 397
4 196 400	1.8 + 16.0 m / 0° offset	8,030 x 6,700 m 360°	30.9 t 3 - 400
4 196 404	1.8 + 16.0 m / 0 - 15° (intermediate angle)	8,030 x 6,700 m 360°	30.9 t 3 - 404
4 196 405	1.8 + 16.0 m / 15 - 30° (intermediate angle)	8,030 x 6,700 m 360°	30.9 t 3 - 408
4 196 406	1.8 + 16.0 m / 30 - 50° (intermediate angle)	8,030 x 6,700 m 360°	30.9 t 3 - 411
4 196 270	1.8 + 9.4 m / 0° offset	8,030 x 6,700 m 360°	26.3 t 3 - 414
4 196 274	1.8 + 9.4 m / 0 - 15° (intermediate angle)	8,030 x 6,700 m 360°	26.3 t 3 - 418
4 196 275	1.8 + 9.4 m / 15 - 30° (intermediate angle)	8,030 x 6,700 m 360°	26.3 t 3 - 422
4 196 276	1.8 + 9.4 m / 30 - 50° (intermediate angle)	8,030 x 6,700 m 360°	26.3 t 3 - 425
4 196 410	1.8 + 16.0 m / 0° offset	8,030 x 6,700 m 360°	26.3 t 3 - 428
4 196 414	1.8 + 16.0 m / 0 - 15° (intermediate angle)	8,030 x 6,700 m 360°	26.3 t 3 - 432
4 196 415	1.8 + 16.0 m / 15 - 30° (intermediate angle)	8,030 x 6,700 m 360°	26.3 t 3 - 436
4 196 416	1.8 + 16.0 m / 30 - 50° (intermediate angle)	8,030 x 6,700 m 360°	26.3 t 3 - 439
4 196 280	1.8 + 9.4 m / 0° offset	8,030 x 6,700 m 360°	24 t 3 - 442
4 196 284	1.8 + 9.4 m / 0 - 15° (intermediate angle)	8,030 x 6,700 m 360°	24 t 3 - 446
4 196 285	1.8 + 9.4 m / 15 - 30° (intermediate angle)	8,030 x 6,700 m 360°	24 t 3 - 450
4 196 286	1.8 + 9.4 m / 30 - 50° (intermediate angle)	8,030 x 6,700 m 360°	24 t 3 - 453
4 196 420	1.8 + 16.0 m / 0° offset	8,030 x 6,700 m 360°	24 t 3 - 456
4 196 424	1.8 + 16.0 m / 0 - 15° (intermediate angle)	8,030 x 6,700 m 360°	24 t 3 - 460
4 196 425	1.8 + 16.0 m / 15 - 30° (intermediate angle)	8,030 x 6,700 m 360°	24 t 3 - 464
4 196 426	1.8 + 16.0 m / 30 - 50° (intermediate angle)	8,030 x 6,700 m 360°	24 t 3 - 467
4 196 290	1.8 + 9.4 m / 0° offset	8,030 x 6,700 m 360°	21.7 t 3 - 470
4 196 294	1.8 + 9.4 m / 0 - 15° (intermediate angle)	8,030 x 6,700 m 360°	21.7 t 3 - 474
4 196 295	1.8 + 9.4 m / 15 - 30° (intermediate angle)	8,030 x 6,700 m 360°	21.7 t 3 - 478
4 196 296	1.8 + 9.4 m / 30 - 50° (intermediate angle)	8,030 x 6,700 m 360°	21.7 t 3 - 481
4 196 430	1.8 + 16.0 m / 0° offset	8,030 x 6,700 m 360°	21.7 t 3 - 484
4 196 434	1.8 + 16.0 m / 0 - 15° (intermediate angle)	8,030 x 6,700 m 360°	21.7 t 3 - 488
4 196 435	1.8 + 16.0 m / 15 - 30° (intermediate angle)	8,030 x 6,700 m 360°	21.7 t 3 - 492
4 196 436	1.8 + 16.0 m / 30 - 50° (intermediate angle)	8,030 x 6,700 m 360°	21.7 t 3 - 495
4 196 300	1.8 + 9.4 m / 0° offset	8,030 x 6,700 m 360°	19.4 t 3 - 498
4 196 304	1.8 + 9.4 m / 0 - 15° (intermediate angle)	8,030 x 6,700 m 360°	19.4 t 3 - 502
4 196 305	1.8 + 9.4 m / 15 - 30° (intermediate angle)	8,030 x 6,700 m 360°	19.4 t 3 - 505
4 196 306	1.8 + 9.4 m / 30 - 50° (intermediate angle)	8,030 x 6,700 m 360°	19.4 t 3 - 508
4 196 440	1.8 + 16.0 m / 0° offset	8,030 x 6,700 m 360°	19.4 t 3 - 512
4 196 444	1.8 + 16.0 m / 0 - 15° (intermediate angle)	8,030 x 6,700 m 360°	19.4 t 3 - 516
4 196 445	1.8 + 16.0 m / 15 - 30° (intermediate angle)	8,030 x 6,700 m 360°	19.4 t 3 - 519
4 196 446	1.8 + 16.0 m / 30 - 50° (intermediate angle)	8,030 x 6,700 m 360°	19.4 t 3 - 522
4 196 310	1.8 + 9.4 m / 0° offset	8,030 x 6,700 m 360°	17.1 t 3 - 526
4 196 314	1.8 + 9.4 m / 0 - 15° (intermediate angle)	8,030 x 6,700 m 360°	17.1 t 3 - 530

	Crane with 44.5 t counterweight						
	Outrigger base - length 8,030 m - width 7,600 m						
	Main boom - telescoping length in m (extending)						
	12,81-18,07	18,07-21,32	21,32-26,54	18,07-23,29	23,29-26,52	21,32-22,37	22,37-27,60
Tel. sec. I	0	0	0.00-0.55	0.00-0.55	0.55-0.89	0	0.00-0.55
Tel. sec. II	0.00-0.55	0.55-0.89	0.89	0.55	0.55	0.89-1.00	1.00
Tel. sec. III	0	0	0	0	0	0	0
Tel. sec. IV	0	0	0	0	0	0	0
Tel. sec. V	0	0	0	0	0	0	0
Slewing range	360°						
Radius in m	Lifting capacities in t						
3.0	25.5	21.0	21.5	21.5	18.5	11.7	19.0
4.0	24.0	20.0	21.0	21.0	17.6	11.1	19.0
5.0	24.0	19.5	20.5	21.0	15.5	10.5	19.0
6.0	24.0	19.1	20.0	20.5	14.9	10.0	19.0
7.0	24.0	18.6	19.6	20.0	14.3	9.6	19.0
8.0	24.0	18.2	19.3	20.0	13.8	9.1	19.0
9.0	24.0	17.7	19.0	20.0	13.4	8.8	18.8
10.0	24.0	17.4	18.7	19.8	12.9	8.5	18.5
11.0	24.0	17.3	18.6	19.8	12.5	6.9	18.2
12.0	24.0	17.1	18.4	19.8	12.2	6.7	18.1
13.0	24.0	15.6	18.3	19.8	11.9	6.6	17.9
14.0	24.0	15.6	18.1	19.8	11.6	6.4	17.8
15.0	24.0	15.6	18.1	19.8	11.5	6.3	17.6
15.8	10.0						
16.0		15.6	18.1	19.8	11.1	6.3	17.6
18.0		15.6	18.1	19.7	10.9	6.3	17.6
19.0		7.2					
20.0			16.6	16.4	10.8		16.8
20.1						6.3	
21.0				5.5			
22.0			14.0		10.8		14.2
24.0			10.4		9.8		12.0
24.2			3.9		3.5		
25.3							3.5
RCL code	2300						
Max. permitted	14 m/s						
wind speed	11 m/s	14 m/s	9 m/s		12 m/s	14 m/s	9 m/s

	Crane with 30.9 t counterweight						
	Outrigger base - length 8,030 m - width 7,600 m						
	Main boom - intermediate length in m						
	12,81-18,07	18,07-21,32	21,32-26,54	18,07-23,29	23,29-26,52	21,32-22,37	22,37-27,60
Tel. sec. I	0	0	0.00-0.55	0.00-0.55	0.55-0.89	0	0.00-0.55
Tel. sec. II	0.00-0.55	0.55-0.89	0.89	0.55	0.55	0.89-1.00	1.00
Tel. sec. III	0	0	0	0	0	0	0
Tel. sec. IV	0	0	0	0	0	0	0
Tel. sec. V	0	0	0	0	0	0	0
Slewing range	360°						
Radius in m	Lifting capacities in t						
3.0	30.5	30.5	28.0	28.5	28.0	20.5	19.0
4.0	30.5	30.5	28.0	28.5	28.0	20.5	19.0
5.0	30.5	30.5	28.0	28.5	28.0	20.5	19.0
6.0	30.5	30.5	28.0	28.5	28.0	20.5	19.0
7.0	30.5	30.5	28.0	28.5	28.0	20.5	19.0
8.0	30.5	30.5	28.0	28.5	28.0	20.5	19.0
9.0	30.5	30.5	28.0	28.5	28.0	20.5	19.0
10.0	30.5	30.5	28.0	28.5	28.0	20.5	19.0
11.0	30.5	30.5	28.0	28.5	28.0	20.5	19.0
12.0	30.5	30.5	28.0	28.5	28.0	20.5	19.0
13.0	26.5	27.0	26.5	26.0	26.0	20.5	19.0
14.0	23.5	23.5	23.5	23.0	22.5	20.5	19.0
15.0	21.0	21.0	20.5	20.5	20.0	20.5	19.0
15.8	10.0						
16.0		18.6	18.3	18.1	17.8	18.7	18.6
18.0		15.0	14.7	14.5	14.2	15.1	15.0
19.0		7.2					
20.0			11.9	11.7	11.4		12.2
20.1						6.5	
21.0				5.5			
22.0			9.7		9.2		10.0
24.0			8.0		7.5		8.2
24.2			3.9		3.5		
25.3							3.5
RCL code	2200						
Max. permitted	14 m/s						
windspeed	10 m/s			11 m/s	10 m/s	12 m/s	

- The lifting capacities according to the real mainboom length below 15° mainboom angle can be significantly lower than the above capacities.
- The boom must be extended/retracted prior to the load being lifted to the required boom intermediate length.

	Crane with 24 t counterweight									
	Outrigger base - length 8,030 m - width 7,600 m									
	Main boom - intermediate length in m									
	12,81-17,33	17,33-21,01	21,01-25,61	25,61-29,37	29,37-34,04	34,04-37,85	37,85-43,11	43,11-46,36	46,36-51,58	51,58-54,81
Tel. sec. I	0	0	0	0	0	0	0	0	0.00-0.55	0.55-0.89
Tel. sec. II	0	0	0	0	0	0	0.00-0.55	0.55-0.89	0.89	0.89
Tel. sec. III	0	0	0	0	0.00-0.49	0.49-0.89	0.89	0.89	0.89	0.89
Tel. sec. IV	0	0	0.00-0.49	0.49-0.89	0.89	0.89	0.89	0.89	0.89	0.89
Tel. sec. V	0.00-0.49	0.49-0.89	0.89	0.89	0.89	0.89	0.89	0.89	0.89	0.89
Slewing range	360°									
Radius in m	Lifting capacities in t									
40.8							2.1			
42.0								2.4	1.9	1.7
44.0									1.5	1.3
44.1								1.4		
46.0									1.2	0.9
48.0									0.9	
RCL code	2000									
Max. permitted	14 m/s							12 m/s		
windspeed	14 m/s				12 m/s	11 m/s	10 m/s		9 m/s	

- The lifting capacities according to the real mainboom length below 15° mainboom angle can be significantly lower than the above capacities.
- The boom must be extended/retracted prior to the load being lifted to the required boom intermediate length.

	Crane with 21.7 t counterweight									
	Outrigger base - length 8,030 m - width 7,600 m									
	Main boom - intermediate length in m									
	21,01-22,02	22,02-26,63	26,63-30,38	30,38-31,42	31,42-36,09	36,09-39,90	39,90-40,95	40,95-46,21	46,21-49,46	49,46-50,51
Tel. sec. I	0	0	0	0	0	0	0	0	0	0
Tel. sec. II	0	0	0	0	0	0	0	0.00-0.55	0.55-0.89	0.89-1.00
Tel. sec. III	0	0	0	0	0.00-0.49	0.49-0.89	0.89-1.00	1.00	1.00	1.00
Tel. sec. IV	0	0.00-0.49	0.49-0.89	0.89-1.00	1.00	1.00	1.00	1.00	1.00	1.00
Tel. sec. V	0.89-1.00	1.00	1.00	1.00	1.00	1.00	1.00	1.00	1.00	1.00
Slewing range	360°									
Radius in m	Lifting capacities in t									
38.6							2.8			
40.0								2.8	2.6	2.5
42.0								2.4	2.2	2.1
43.9								1.8		
44.0									1.8	1.7
46.0									1.5	1.4
47.2									1.1	
48.0										1.1
48.2										0.9
RCL code	1900									
Max. permitted	14 m/s							12 m/s		
windspeed	14 m/s			12 m/s	11 m/s		10 m/s	9 m/s		

- The lifting capacities according to the real mainboom length below 15° mainboom angle can be significantly lower than the above capacities.
- The boom must be extended/retracted prior to the load being lifted to the required boom intermediate length.

	Crane with 10.2 t counterweight									
	Outrigger base - length 8,030 m - width 7,600 m									
	Main boom - intermediate length in m									
	21,01-22,02	22,02-26,63	26,63-30,38	30,38-31,42	31,42-36,09	36,09-39,90	39,90-40,95	40,95-46,21	46,21-49,46	49,46-50,51
Tel. sec. I	0	0	0	0	0	0	0	0	0	0
Tel. sec. II	0	0	0	0	0	0	0	0.00-0.55	0.55-0.89	0.89-1.00
Tel. sec. III	0	0	0	0	0.00-0.49	0.49-0.89	0.89-1.00	1.00	1.00	1.00
Tel. sec. IV	0	0.00-0.49	0.49-0.89	0.89-1.00	1.00	1.00	1.00	1.00	1.00	1.00
Tel. sec. V	0.89-1.00	1.00	1.00	1.00	1.00	1.00	1.00	1.00	1.00	1.00
Slewing range	360°									
Radius in m	Lifting capacities in t									
3.0	23.0	35.0								
4.0	23.0	31.0	27.5							
5.0	23.0	27.5	26.0	21.5	23.5					
6.0	23.0	24.5	23.5	21.5	23.0	19.1	18.0			
7.0	22.5	22.5	21.5	20.5	20.5	18.5	18.0	18.0		
8.0	20.5	20.5	20.0	18.8	18.8	17.8	17.8	18.0	16.4	15.8
9.0	18.8	18.8	18.5	17.2	17.2	17.2	17.2	17.9	16.4	15.8
10.0	17.4	17.4	17.1	15.7	15.7	16.5	16.5	16.5	16.4	15.8
11.0	16.1	16.1	15.8	14.6	14.6	15.8	15.4	15.4	16.1	15.8
12.0	15.1	15.1	14.7	13.6	13.6	14.9	14.3	14.3	15.2	15.4
13.0	14.2	14.2	13.8	12.7	12.7	14.1	13.4	13.4	14.4	14.5
14.0	13.3	13.3	12.9	11.9	11.9	13.2	12.5	12.5	13.3	13.1
15.0	12.6	12.6	12.2	11.2	11.2	12.5	11.7	11.7	12.0	11.8
16.0	11.4	11.6	11.5	10.5	10.5	11.8	11.0	11.0	10.9	10.7
18.0	9.0	9.2	10.1	9.5	9.5	10.2	9.8	9.4	9.0	8.9
19.7	7.5									
20.0		7.4	8.2	8.4	8.5	8.5	8.5	7.9	7.6	7.4
22.0		6.0	6.8	7.0	7.0	7.0	7.1	6.7	6.4	6.3
24.0		4.8	5.6	5.8	5.8	5.9	5.9	5.6	5.4	5.3
24.3		4.7								
26.0			4.6	4.8	4.8	4.9	4.9	4.6	4.5	4.4
28.0				4.0	4.0	4.1	4.1	3.8	3.6	3.6
28.1			3.9							
29.1				3.6						
30.0					3.3	3.4	3.4	3.1	2.9	2.9
32.0					2.7	2.8	2.8	2.5	2.3	2.3
33.8					2.3					
34.0						2.3	2.3	2.0	1.8	1.8
36.0						1.8	1.8	1.5	1.4	1.3
37.6						1.5				
38.0							1.4	1.1	1.0	0.9
38.6							1.3			
40.0								0.8		
RCL code	1400									
Max. permitted	14 m/s							12 m/s		
windspeed	14 m/s				13 m/s	12 m/s	11 m/s		10 m/s	

- The lifting capacities according to the real mainboom length below 15° mainboom angle can be significantly lower than the above capacities.
- The boom must be extended/retracted prior to the load being lifted to the required boom intermediate length.

	Crane with 5.6 t counterweight								
	Outrigger base - length 8,030 m - width 7,600 m								
	Main boom - intermediate length in m								
	12,81-17,42	17,42-22,09	22,09-27,35	27,35-32,57	17,42-21,18	21,18-25,85	22,09-25,90	21,18-22,21	22,21-26,88
Tel. sec. I	0	0	0	0.00-0.55	0	0	0	0	0
Tel. sec. II	0	0	0.00-0.55	0.55	0	0	0	0	0
Tel. sec. III	0	0.00-0.49	0.49	0.49	0	0.00-0.49	0.49-0.89	0	0.00-0.49
Tel. sec. IV	0.00-0.49	0.49	0.49	0.49	0.49-0.89	0.89	0.49	0.89-1.00	1.00
Tel. sec. V	0	0	0	0	0	0	0	0	0
Slewing range	360°								
Radius in m	Lifting capacities in t								
3.0	35.5	32.0	30.0		32.5	32.0	32.0	21.5	28.0
4.0	35.5	32.0	30.0	28.0	32.5	32.0	32.0	21.5	28.0
5.0	35.5	32.0	30.0	28.0	32.5	32.0	32.0	21.5	28.0
6.0	35.5	32.0	30.0	28.0	32.5	32.0	32.0	21.5	26.5
7.0	35.5	32.0	30.0	28.0	32.5	31.5	32.0	21.5	24.5
8.0	29.5	30.0	28.0	25.0	30.5	29.0	29.0	21.5	22.5
9.0	23.5	24.5	23.5	21.0	25.0	24.5	24.0	21.0	21.0
10.0	18.8	20.5	19.7	17.6	20.5	20.5	20.5	19.6	19.6
11.0	15.3	17.0	16.8	15.0	17.0	17.6	17.4	17.9	17.6
12.0	12.7	14.3	14.5	12.9	14.3	15.1	15.0	15.1	15.3
13.0	10.5	12.1	12.5	11.2	12.1	12.9	12.7	12.9	13.1
14.0	8.8	10.3	10.7	9.7	10.3	11.1	10.9	11.1	11.3
15.0		8.8	9.2	8.4	8.8	9.6	9.4	9.6	9.8
15.1	7.2								
16.0		7.5	7.9	7.2	7.5	8.3	8.2	8.3	8.5
18.0		5.5	5.9	5.2	5.5	6.2	6.1	6.3	6.4
18.9					4.8				
19.8		4.2							
19.9								4.8	
20.0			4.4	3.7		4.7	4.6		4.9
22.0			3.2	2.5		3.5	3.3		3.6
23.6						2.7	2.6		
24.0			2.2	1.5					2.6
24.6									2.4
25.1			1.8						
RCL code	1200								
Max. permitted	14 m/s								
wind speed	14 m/s								

- The lifting capacities according to the real mainboom length below 15° mainboom angle can be significantly lower than the above capacities.
- The boom must be extended/retracted prior to the load being lifted to the required boom intermediate length.

	Crane with 1 t counterweight										
	Outrigger base - length 8,030 m - width 7,600 m										
	Main boom - intermediate length in m										
	17,33-21,93	21,93-25,69	25,69-30,36	30,36-34,17	34,17-39,43	39,43-42,68	42,68-47,90	47,90-51,13	51,13-31,86	31,86-37,08	37,08-40,31
Tel. sec. I	0	0	0	0	0	0	0,00-0,55	0,55-0,89	0,00-0,55	0,55-0,89	
Tel. sec. II	0	0	0	0	0,00-0,55	0,55-0,89	0,89	0,89	0,55	0,55	
Tel. sec. III	0	0	0,00-0,49	0,49-0,89	0,89	0,89	0,89	0,89	0,49	0,49	
Tel. sec. IV	0,00-0,49	0,49-0,89	0,89	0,89	0,89	0,89	0,89	0,89	0,49	0,49	
Tel. sec. V	0,49	0,49	0,49	0,49	0,49	0,49	0,49	0,49	0,49	0,49	
Slewing range	360°										
Radius in m	Lifting capacities in t										
3.0	35.0	32.5									
4.0	35.0	32.5	32.0								
5.0	35.0	31.5	31.5	26.5	26.5					28.0	
6.0	35.0	28.5	28.5	25.0	25.0	24.5				28.0	28.0
7.0	32.0	26.0	26.0	24.0	24.0	24.0	21.5			24.5	23.0
8.0	25.5	23.5	23.5	22.5	21.0	20.0	18.1	16.9	20.0	18.8	
9.0	20.5	21.0	20.0	19.4	17.8	16.9	15.3	14.3	16.8	15.7	
10.0	17.0	17.6	17.0	16.5	15.3	14.5	13.1	12.2	14.2	13.2	
11.0	14.0	15.0	14.6	14.2	13.2	12.5	11.3	10.5	12.1	11.2	
12.0	11.7	12.8	12.6	12.4	11.5	10.9	9.7	9.0	10.4	9.6	
13.0	9.8	10.8	11.0	10.9	10.0	9.5	8.5	7.8	8.9	8.2	
14.0	8.2	9.3	9.7	9.6	8.8	8.3	7.4	6.7	7.7	7.0	
15.0	6.9	8.0	8.3	8.5	7.8	7.3	6.4	5.8	6.7	6.0	
16.0	5.9	6.9	7.2	7.5	6.9	6.5	5.6	5.0	5.8	5.2	
18.0	4.1	5.1	5.4	5.7	5.4	5.0	4.2	3.7	4.2	3.7	
19.6	3.0										
20.0		3.7	4.1	4.3	4.1	3.9	3.1	2.6	2.9	2.5	
22.0		2.7	3.0	3.2	3.0	2.8	2.2	1.7	1.9	1.5	
23.4		2.1									
24.0			2.1	2.4	2.2	2.0	1.4	1.0	1.0		
26.0			1.4	1.7	1.4	1.3	0.8				
28.0				1.1	0.8						
28.1			0.9								
RCL code	1000										
Max. permitted	14 m/s						12 m/s		14 m/s		
wind speed	14 m/s						12 m/s		14 m/s		

- The lifting capacities according to the real mainboom length below 15° mainboom angle can be significantly lower than the above capacities.
- The boom must be extended/retracted prior to the load being lifted to the required boom intermediate length.

	Crane with 44.5 t counterweight						
	Outrigger base - length 8,030 m - width 6,700 m						
	Main boom - intermediate length in m						
	12,81-18,07	18,07-21,32	21,32-26,54	18,07-23,29	23,29-26,52	21,32-22,37	22,37-27,60
Tel. sec. I	0	0	0.00-0.55	0.00-0.55	0.55-0.89	0	0.00-0.55
Tel. sec. II	0.00-0.55	0.55-0.89	0.89	0.55	0.55	0.89-1.00	1.00
Tel. sec. III	0	0	0	0	0	0	0
Tel. sec. IV	0	0	0	0	0	0	0
Tel. sec. V	0	0	0	0	0	0	0
Slewing range	360°						
Radius in m	Lifting capacities in t						
3.0	30.5	30.5	28.0	28.5	28.0	20.5	19.0
4.0	30.5	30.5	28.0	28.5	28.0	20.5	19.0
5.0	30.5	30.5	28.0	28.5	28.0	20.5	19.0
6.0	30.5	30.5	28.0	28.5	28.0	20.5	19.0
7.0	30.5	30.5	28.0	28.5	28.0	20.5	19.0
8.0	30.5	30.5	28.0	28.5	28.0	20.5	19.0
9.0	30.5	30.5	28.0	28.5	28.0	20.5	19.0
10.0	30.5	30.5	28.0	28.5	28.0	20.5	19.0
11.0	30.5	30.5	28.0	28.5	28.0	20.5	19.0
12.0	30.5	30.5	28.0	28.5	28.0	20.5	19.0
13.0	30.5	30.5	28.0	28.5	28.0	20.5	19.0
14.0	27.5	27.5	27.0	27.0	26.5	20.5	19.0
15.0	24.5	24.5	24.0	24.0	23.5	20.5	19.0
15.8	10.0						
16.0		22.0	21.5	21.5	21.0	20.5	19.0
18.0		17.8	17.6	17.4	17.1	17.9	17.8
19.0		7.2					
20.0			14.5	14.4	14.1		14.8
20.1						6.5	
21.0				5.5			
22.0			12.2		11.7		12.3
24.0			10.3		9.8		10.4
24.2			3.9		3.5		
25.3							3.5
RCL code	2301						
Max. permitted	14 m/s						
wind speed	10 m/s					12 m/s	11 m/s

- The lifting capacities according to the real mainboom length below 15° mainboom angle can be significantly lower than the above capacities.
- The boom must be extended/retracted prior to the load being lifted to the required boom intermediate length.

	Crane with 26.3 t counterweight									
	Outrigger base - length 8,030 m - width 6,700 m									
	Main boom - intermediate length in m									
	12,81-17,33	17,33-21,01	21,01-25,61	25,61-29,37	29,37-34,04	34,04-37,85	37,85-43,11	43,11-46,36	46,36-51,58	51,58-54,81
Tel. sec. I	0	0	0	0	0	0	0	0	0.00-0.55	0.55-0.89
Tel. sec. II	0	0	0	0	0	0	0.00-0.55	0.55-0.89	0.89	0.89
Tel. sec. III	0	0	0	0	0.00-0.49	0.49-0.89	0.89	0.89	0.89	0.89
Tel. sec. IV	0	0	0.00-0.49	0.49-0.89	0.89	0.89	0.89	0.89	0.89	0.89
Tel. sec. V	0.00-0.49	0.49-0.89	0.89	0.89	0.89	0.89	0.89	0.89	0.89	0.89
Slewing range	360°									
Radius in m	Lifting capacities in t									
40.8							2.1			
42.0								2.1	1.6	1.3
44.0									1.2	1.0
44.1								1.4		
46.0									0.9	
RCL code	2101									
Max. permitted	14 m/s							12 m/s		
windspeed	14 m/s				13 m/s	12 m/s	10 m/s		9 m/s	

- The lifting capacities according to the real mainboom length below 15° mainboom angle can be significantly lower than the above capacities.
- The boom must be extended/retracted prior to the load being lifted to the required boom intermediate length.

	Crane with 24 t counterweight							
	Outrigger base - length 8,030 m - width 6,700 m							
	Main boom - intermediate length in m							
	12,81-17,48	17,48-21,30	21,30-26,55	17,48-22,74	22,74-25,99	22,74-27,96	21,30-22,34	22,34-27,60
Tel. sec. I	0	0	0	0	0	0.00-0.55	0	0
Tel. sec. II	0	0	0.00-0.55	0.00-0.55	0.55-0.89	0.55	0	0.00-0.55
Tel. sec. III	0.00-0.49	0.49-0.89	0.89	0.49	0.49	0.49	0.89-1.00	1.00
Tel. sec. IV	0	0	0	0	0	0	0	0
Tel. sec. V	0	0	0	0	0	0	0	0
Slewing range	360°							
Radius in m	Lifting capacities in t							
3.0	32.5	32.0	30.5	30.5	30.5	28.0	22.5	18.0
4.0	32.5	32.0	30.5	30.5	30.5	28.0	22.5	18.0
5.0	32.5	32.0	30.5	30.5	30.5	28.0	22.5	18.0
6.0	32.5	32.0	30.5	30.5	30.5	28.0	22.5	18.0
7.0	32.5	32.0	30.5	30.5	30.5	28.0	22.5	18.0
8.0	32.5	32.0	30.5	30.5	30.5	28.0	22.5	18.0
9.0	32.5	32.0	30.5	30.5	30.5	28.0	22.5	18.0
10.0	31.0	31.0	29.5	30.5	29.5	28.0	22.5	18.0
11.0	26.0	27.0	26.0	26.5	25.5	24.5	22.5	18.0
12.0	22.5	23.0	22.5	23.0	22.5	21.5	22.5	18.0
13.0	19.3	20.0	20.0	20.0	19.8	18.9	20.5	18.0
14.0	16.8	17.6	18.0	17.6	17.6	16.8	18.1	18.0
15.0	14.7	15.5	15.9	15.5	15.5	15.0	16.0	16.1
15.2	10.7							
16.0		13.7	14.1	13.7	13.7	13.2	14.1	14.3
18.0		10.9	11.2	10.8	10.8	10.4	11.3	11.4
19.0		7.8						
20.0			9.0	8.7	8.6	8.2	7.4	9.3
20.4				6.8				
22.0			7.3		6.9	6.5		7.5
23.7					5.0			
24.0			5.9			5.1		6.1
24.2			5.0					
25.3								4.6
25.7						3.7		
RCL code	2001							
Max. permitted	14 m/s							
windspeed	14 m/s							

- The lifting capacities according to the real mainboom length below 15° mainboom angle can be significantly lower than the above capacities.
- The boom must be extended/retracted prior to the load being lifted to the required boom intermediate length.

	Crane with 19.4 t counterweight								
	Outrigger base - length 8,030 m - width 6,700 m								
	Main boom - intermediate length in m								
	12,81-17,42	17,42-22,09	22,09-27,35	27,35-32,57	17,42-21,18	21,18-25,85	22,09-25,90	21,18-22,21	22,21-26,88
Tel. sec. I	0	0	0	0.00-0.55	0	0	0	0	0
Tel. sec. II	0	0	0.00-0.55	0.55	0	0	0	0	0
Tel. sec. III	0	0.00-0.49	0.49	0.49	0	0.00-0.49	0.49-0.89	0	0.00-0.49
Tel. sec. IV	0.00-0.49	0.49	0.49	0.49	0.49-0.89	0.89	0.49	0.89-1.00	1.00
Tel. sec. V	0	0	0	0	0	0	0	0	0
Slewing range	360°								
Radius in m	Lifting capacities in t								
3.0	35.5	32.0	30.0		32.5	32.0	32.0	21.5	28.0
4.0	35.5	32.0	30.0	28.0	32.5	32.0	32.0	21.5	28.0
5.0	35.5	32.0	30.0	28.0	32.5	32.0	32.0	21.5	28.0
6.0	35.5	32.0	30.0	28.0	32.5	32.0	32.0	21.5	26.5
7.0	35.5	32.0	30.0	28.0	32.5	31.5	32.0	21.5	24.5
8.0	35.5	32.0	30.0	28.0	30.5	29.0	29.5	21.5	22.5
9.0	32.5	32.0	30.0	28.0	28.0	26.5	27.0	21.0	21.0
10.0	27.0	28.0	26.5	24.0	26.0	24.5	25.0	19.6	19.6
11.0	22.5	24.0	23.0	21.0	24.0	22.5	23.0	18.4	18.4
12.0	19.3	21.0	20.5	18.6	21.0	21.0	21.0	17.3	17.3
13.0	16.5	18.0	18.0	16.4	18.0	18.7	18.6	16.2	16.2
14.0	14.3	15.8	16.1	14.6	15.8	16.5	16.4	15.3	15.3
15.0		13.9	14.3	13.1	13.9	14.6	14.5	14.5	14.5
15.1	10.8								
16.0		12.2	12.6	11.7	12.2	13.0	12.8	13.0	13.2
18.0		9.6	10.0	9.3	9.6	10.3	10.2	10.4	10.5
18.9					8.4				
19.8		7.7							
19.9								8.2	
20.0			8.0	7.4		8.3	8.2		8.5
22.0			6.4	5.8		6.7	6.6		6.9
23.6						5.8	5.7		
24.0			5.2	4.5					5.6
24.6									5.3
25.1			4.7						
26.0				3.5					
28.0				2.6					
30.0				1.9					
30.3				1.9					
RCL code	1801								
Max. permitted	14 m/s								
wind speed	14 m/s								

- The lifting capacities according to the real mainboom length below 15° mainboom angle can be significantly lower than the above capacities.
- The boom must be extended/retracted prior to the load being lifted to the required boom intermediate length.

	Crane with 10.2 t counterweight									
	Outrigger base - length 8,030 m - width 6,700 m									
	Main boom - fixed length in m									
	40.76	40.95	43.11	43.56	44.52	46.21	46.36	47.24	47.37	48.33
Tel. sec. I	0.55	0.00	0.00	0.89	0.55	0.00	0.00	0.89	0.89	0.55
Tel. sec. II	0.55	0.00	0.55	0.89	0.55	0.55	0.89	0.89	0.89	0.55
Tel. sec. III	0.49	1.00	0.89	0.49	0.49	1.00	0.89	0.49	0.89	0.89
Tel. sec. IV	0.49	1.00	0.89	0.49	0.89	1.00	0.89	0.49	0.49	0.89
Tel. sec. V	0.89	1.00	0.89	0.49	0.89	1.00	0.89	0.89	0.49	0.89
Slewing range	360°									
Radius in m	Lifting capacities in t									
7.0	28.5	18.0	22.5	26.0	24.5					
8.0	24.0	18.0	22.5	22.0	23.5	18.0	21.0	21.5	21.0	20.0
9.0	20.5	17.9	21.0	18.6	20.0	18.0	20.0	18.5	18.1	19.4
10.0	17.7	16.6	18.5	16.0	17.5	17.3	17.7	16.1	15.7	16.9
11.0	15.5	15.4	16.3	13.9	15.3	16.0	15.6	14.0	13.6	14.9
12.0	13.6	14.4	14.5	12.1	13.5	14.3	13.8	12.3	11.9	13.1
13.0	12.0	13.4	12.9	10.6	12.0	12.8	12.3	10.9	10.5	11.7
14.0	10.7	12.2	11.6	9.3	10.7	11.5	11.0	9.6	9.3	10.5
15.0	9.5	11.1	10.4	8.2	9.6	10.4	9.9	8.5	8.2	9.4
16.0	8.5	10.0	9.4	7.3	8.6	9.4	8.9	7.6	7.2	8.4
18.0	6.8	8.3	7.8	5.6	7.0	7.7	7.3	6.0	5.7	6.8
20.0	5.5	6.9	6.4	4.4	5.7	6.4	6.0	4.7	4.4	5.6
22.0	4.3	5.7	5.3	3.3	4.6	5.4	5.0	3.7	3.4	4.5
24.0	3.3	4.7	4.3	2.3	3.6	4.4	4.0	2.8	2.5	3.6
26.0	2.4	3.8	3.4	1.5	2.8	3.6	3.2	2.0	1.7	2.8
28.0	1.7	3.1	2.7		2.1	2.9	2.5	1.3	1.0	2.1
30.0	1.1	2.5	2.1		1.4	2.2	1.8			1.5
32.0		1.9	1.6		0.9	1.7	1.3			1.0
34.0		1.5	1.1			1.2	0.9			
36.0		1.1				0.8				
RCL code	1401									
Max. permitted	14 m/s					12 m/s				
windspeed	13 m/s	12 m/s				11 m/s	12 m/s			

	Crane with 5.6 t counterweight									
	Outrigger base - length 8,030 m - width 6,700 m									
	Main boom - fixed length in m									
	22.74	23.29	25.61	26.60	26.63	27.35	27.96	29.37	30.28	31.42
Tel. sec. I	0.00	0.55	0.00	0.00	0.00	0.00	0.55	0.00	0.00	0.00
Tel. sec. II	0.55	0.55	0.00	0.00	0.00	0.55	0.55	0.00	0.00	0.00
Tel. sec. III	0.49	0.00	0.00	0.49	0.00	0.49	0.49	0.00	0.49	0.00
Tel. sec. IV	0.00	0.00	0.49	0.49	0.49	0.49	0.00	0.89	0.49	1.00
Tel. sec. V	0.00	0.00	0.89	0.49	1.00	0.00	0.00	0.89	0.89	1.00
Slewing range	360°									
Radius in m	Lifting capacities in t									
3.0	76.0	89.5								
4.0	72.5	68.5	36.0	41.0	33.0	55.0	60.5			
5.0	49.5	46.5	32.0	41.0	30.0	46.0	43.0	28.0	34.0	25.0
6.0	36.5	34.0	28.5	37.5	27.5	35.0	32.5	25.0	31.0	23.0
7.0	28.5	26.5	26.0	30.0	25.0	27.5	25.5	23.0	28.5	20.5
8.0	23.0	21.0	23.5	24.5	23.0	22.5	20.5	21.0	24.0	18.8
9.0	18.8	17.0	21.5	20.5	21.0	18.8	16.8	19.1	20.5	17.2
10.0	15.7	14.0	18.6	17.7	18.6	15.9	13.9	17.7	17.6	15.8
11.0	13.1	11.5	16.1	15.2	16.1	13.6	11.7	15.7	15.3	14.6
12.0	10.8	9.3	14.1	13.3	14.1	11.6	9.8	13.8	13.4	13.6
13.0	9.0	7.5	12.2	11.5	12.4	10.1	8.3	12.2	11.9	12.1
14.0	7.4	6.0	10.6	10.0	10.8	8.5	6.9	10.8	10.5	10.8
15.0	6.2	4.8	9.2	8.6	9.4	7.2	5.6	9.5	9.3	9.7
16.0	5.1	3.7	8.1	7.5	8.3	6.1	4.5	8.4	8.2	8.6
18.0	3.4	2.0	6.3	5.7	6.5	4.4	2.8	6.5	6.3	6.7
20.0	2.1		4.9	4.3	5.1	3.0	1.5	5.1	4.9	5.3
20.4	1.9									
22.0			3.8	3.2	4.0	2.0		4.0	3.8	4.2
23.3			3.2							
24.0				2.4	3.1	1.1		3.1	2.9	3.3
24.3				2.3	3.0					
25.1						0.8				
26.0								2.4	2.2	2.5
27.1								2.1		
28.0									1.7	1.9
29.1										1.7
RCL code	1201									
Max. permitted	14 m/s									
windspeed	14 m/s									

	Crane with 26.3 t counterweight									
	Outrigger base - length 8,030 m - width 5,900 m									
	Main boom - fixed length in m									
	40.76	40.95	43.11	43.56	44.52	46.21	46.36	47.24	47.37	48.33
Tel. sec. I	0.55	0.00	0.00	0.89	0.55	0.00	0.00	0.89	0.89	0.55
Tel. sec. II	0.55	0.00	0.55	0.89	0.55	0.55	0.89	0.89	0.89	0.55
Tel. sec. III	0.49	1.00	0.89	0.49	0.49	1.00	0.89	0.49	0.89	0.89
Tel. sec. IV	0.49	1.00	0.89	0.49	0.89	1.00	0.89	0.49	0.49	0.89
Tel. sec. V	0.89	1.00	0.89	0.49	0.89	1.00	0.89	0.89	0.49	0.89
Slewing range	360°									
Radius in m	Lifting capacities in t									
7.0	29.0	18.0	22.5	27.5	24.5					
8.0	29.0	18.0	22.5	27.5	24.0	18.0	21.0	24.0	23.0	20.0
9.0	27.5	17.9	21.5	26.0	23.0	18.0	21.0	24.0	23.0	20.0
10.0	24.5	16.6	20.0	23.0	22.0	17.3	20.0	23.0	22.5	19.9
11.0	22.0	15.4	18.9	20.5	21.0	16.2	19.0	20.5	19.9	19.2
12.0	19.6	14.4	17.8	18.1	19.4	15.2	18.1	18.1	17.8	18.4
13.0	17.6	13.4	16.8	16.2	17.5	14.4	17.2	16.3	16.0	17.1
14.0	16.0	12.5	15.8	14.6	15.9	13.6	16.1	14.7	14.4	15.5
15.0	14.5	11.8	15.0	13.1	14.5	12.8	14.7	13.4	13.0	14.1
16.0	13.2	11.1	14.0	11.9	13.2	12.1	13.5	12.1	11.8	12.9
18.0	11.1	9.9	11.9	9.8	11.1	10.9	11.4	10.1	9.8	10.9
20.0	9.3	8.9	10.2	8.2	9.4	9.8	9.7	8.5	8.2	9.3
22.0	7.9	7.9	8.8	6.8	8.1	8.8	8.4	7.1	6.8	7.9
24.0	6.6	7.2	7.5	5.7	6.9	7.6	7.2	6.0	5.7	6.8
26.0	5.5	6.5	6.4	4.6	5.8	6.5	6.2	5.1	4.8	5.8
28.0	4.6	5.8	5.5	3.7	4.9	5.6	5.3	4.2	3.9	5.0
30.0	3.8	5.0	4.7	2.9	4.1	4.8	4.5	3.4	3.1	4.2
32.0	3.2	4.4	4.0	2.2	3.5	4.2	3.8	2.7	2.4	3.5
34.0	2.6	3.8	3.5	1.6	2.9	3.6	3.2	2.1	1.8	2.9
36.0	2.0	3.3	2.9	1.1	2.3	3.1	2.7	1.6	1.3	2.4
38.0	1.6	2.8	2.5		1.8	2.6	2.2	1.1	0.8	1.9
38.5	1.5									
38.6		2.7								
40.0			2.1		1.4	2.2	1.8			1.5
40.8			1.9							
42.0					1.1	1.8	1.4			1.1
42.2					1.1					
43.9						1.5				
44.1							1.1			
RCL code	2102									
Max. permitted	14 m/s					12 m/s				
windspeed	11 m/s		10 m/s	11 m/s	10 m/s			11 m/s	10 m/s	

	Crane with 24 t counterweight							
	Outrigger base - length 8,030 m - width 5,900 m							
	Main boom - intermediate length in m							
	12,81-17,48	17,48-21,30	21,30-26,55	17,48-22,74	22,74-25,99	22,74-27,96	21,30-22,34	22,34-27,60
Tel. sec. I	0	0	0	0	0	0.00-0.55	0	0
Tel. sec. II	0	0	0.00-0.55	0.00-0.55	0.55-0.89	0.55	0	0.00-0.55
Tel. sec. III	0.00-0.49	0.49-0.89	0.89	0.49	0.49	0.49	0.89-1.00	1.00
Tel. sec. IV	0	0	0	0	0	0	0	0
Tel. sec. V	0	0	0	0	0	0	0	0
Slewing range	360°							
Radius in m	Lifting capacities in t							
3.0	32.5	32.0	30.5	30.5	30.5	28.0	22.5	18.0
4.0	32.5	32.0	30.5	30.5	30.5	28.0	22.5	18.0
5.0	32.5	32.0	30.5	30.5	30.5	28.0	22.5	18.0
6.0	32.5	32.0	30.5	30.5	30.5	28.0	22.5	18.0
7.0	32.5	32.0	30.5	30.5	30.5	28.0	22.5	18.0
8.0	32.5	32.0	30.5	30.5	30.5	28.0	22.5	18.0
9.0	31.5	30.5	29.0	30.0	29.0	27.5	22.5	18.0
10.0	26.5	26.5	25.0	26.0	25.0	23.5	22.5	18.0
11.0	22.5	23.0	22.0	22.5	21.5	20.5	22.5	18.0
12.0	19.0	19.8	19.3	19.6	18.9	18.0	20.5	18.0
13.0	16.4	17.1	17.1	17.1	16.7	15.9	17.6	17.2
14.0	14.2	14.9	15.2	14.9	14.9	14.1	15.4	15.3
15.0	12.4	13.1	13.4	13.1	13.1	12.5	13.5	13.7
15.2	10.7							
16.0		11.6	11.9	11.5	11.5	11.1	12.0	12.1
18.0		9.1	9.4	9.0	9.0	8.6	9.4	9.6
19.0		7.8						
20.0			7.5	7.2	7.1	6.7	7.4	7.7
20.4				6.8				
22.0			6.0		5.6	5.1		6.2
23.7					4.6			
24.0			4.7			3.9		4.9
24.2			4.7					
25.3								4.2
25.7						3.1		
RCL code	2002							
Max. permitted	14 m/s							
windspeed	14 m/s							

- The lifting capacities according to the real mainboom length below 15° mainboom angle can be significantly lower than the above capacities.
- The boom must be extended/retracted prior to the load being lifted to the required boom intermediate length.

	Crane with 19.4 t counterweight								
	Outrigger base - length 8,030 m - width 5,900 m								
	Main boom - intermediate length in m								
	12,81-17,42	17,42-22,09	22,09-27,35	27,35-32,57	17,42-21,18	21,18-25,85	22,09-25,90	21,18-22,21	22,21-26,88
Tel. sec. I	0	0	0	0.00-0.55	0	0	0	0	0
Tel. sec. II	0	0	0.00-0.55	0.55	0	0	0	0	0
Tel. sec. III	0	0.00-0.49	0.49	0.49	0	0.00-0.49	0.49-0.89	0	0.00-0.49
Tel. sec. IV	0.00-0.49	0.49	0.49	0.49	0.49-0.89	0.89	0.49	0.89-1.00	1.00
Tel. sec. V	0	0	0	0	0	0	0	0	0
Slewing range	360°								
Radius in m	Lifting capacities in t								
3.0	35.5	32.0	30.0		32.5	32.0	32.0	21.5	28.0
4.0	35.5	32.0	30.0	28.0	32.5	32.0	32.0	21.5	28.0
5.0	35.5	32.0	30.0	28.0	32.5	32.0	32.0	21.5	28.0
6.0	35.5	32.0	30.0	28.0	32.5	32.0	32.0	21.5	26.5
7.0	35.5	32.0	30.0	28.0	32.5	31.5	32.0	21.5	24.5
8.0	33.0	32.0	30.0	28.0	30.5	29.0	29.5	21.5	22.5
9.0	27.5	27.5	26.0	23.5	27.5	26.5	26.5	21.0	21.0
10.0	23.0	23.5	22.5	20.5	23.5	23.0	23.0	19.6	19.6
11.0	19.3	20.5	19.5	17.7	20.5	20.0	20.0	18.4	18.4
12.0	16.3	17.8	17.2	15.6	17.8	17.8	17.7	17.3	17.3
13.0	13.9	15.4	15.2	13.7	15.4	15.8	15.7	16.1	15.9
14.0	11.9	13.4	13.5	12.2	13.4	14.0	13.9	14.1	14.2
15.0		11.7	12.1	10.8	11.7	12.4	12.3	12.4	12.6
15.1	10.1								
16.0		10.3	10.6	9.6	10.3	10.9	10.8	11.0	11.1
18.0		8.0	8.3	7.7	8.0	8.7	8.5	8.7	8.8
18.9					7.2				
19.8		6.4							
19.9								7.0	
20.0			6.6	5.9		6.9	6.8		7.1
22.0			5.1	4.5		5.4	5.3		5.6
23.6						4.6	4.5		
24.0			4.0	3.4					4.5
24.6									4.2
25.1			3.6						
26.0				2.4					
28.0				1.7					
30.0				1.0					
30.3				1.0					
RCL code	1802								
Max. permitted	14 m/s								
wind speed	14 m/s								

- The lifting capacities according to the real mainboom length below 15° mainboom angle can be significantly lower than the above capacities.
- The boom must be extended/retracted prior to the load being lifted to the required boom intermediate length.

4 195 182	Fixed length	8,030 x 6,700 m 360°	19.4 t 2	- 400
4 195 183	Intermediate length	8,030 x 6,700 m 360°	19.4 t 2	- 406
4 195 192	Fixed length	8,030 x 6,700 m 360°	17.1 t 2	- 418
4 195 193	Intermediate length	8,030 x 6,700 m 360°	17.1 t 2	- 424
4 195 202	Fixed length	8,030 x 6,700 m 360°	14.8 t 2	- 434
4 195 203	Intermediate length	8,030 x 6,700 m 360°	14.8 t 2	- 440
4 195 212	Fixed length	8,030 x 6,700 m 360°	12.5 t 2	- 450
4 195 213	Intermediate length	8,030 x 6,700 m 360°	12.5 t 2	- 456
4 195 222	Fixed length	8,030 x 6,700 m 360°	10.2 t 2	- 466
4 195 223	Intermediate length	8,030 x 6,700 m 360°	10.2 t 2	- 472
4 195 232	Fixed length	8,030 x 6,700 m 360°	7.9 t 2	- 482
4 195 233	Intermediate length	8,030 x 6,700 m 360°	7.9 t 2	- 488
4 195 242	Fixed length	8,030 x 6,700 m 360°	5.6 t 2	- 498
4 195 243	Intermediate length	8,030 x 6,700 m 360°	5.6 t 2	- 504
4 195 252	Fixed length	8,030 x 6,700 m 360°	3.3 t 2	- 514
4 195 253	Intermediate length	8,030 x 6,700 m 360°	3.3 t 2	- 520
4 195 262	Fixed length	8,030 x 6,700 m 360°	1 t 2	- 530
4 195 263	Intermediate length	8,030 x 6,700 m 360°	1 t 2	- 536
4 195 134	Fixed length	8,030 x 5,900 m 360°	44.5 t 2	- 546
4 195 135	Intermediate length	8,030 x 5,900 m 360°	44.5 t 2	- 552
4 195 144	Fixed length	8,030 x 5,900 m 360°	30.9 t 2	- 568
4 195 145	Intermediate length	8,030 x 5,900 m 360°	30.9 t 2	- 574
4 195 154	Fixed length	8,030 x 5,900 m 360°	26.3 t 2	- 586
4 195 155	Intermediate length	8,030 x 5,900 m 360°	26.3 t 2	- 592
4 195 164	Fixed length	8,030 x 5,900 m 360°	24 t 2	- 604
4 195 165	Intermediate length	8,030 x 5,900 m 360°	24 t 2	- 610
4 195 174	Fixed length	8,030 x 5,900 m 360°	21.7 t 2	- 622
4 195 175	Intermediate length	8,030 x 5,900 m 360°	21.7 t 2	- 628
4 195 184	Fixed length	8,030 x 5,900 m 360°	19.4 t 2	- 640
4 195 185	Intermediate length	8,030 x 5,900 m 360°	19.4 t 2	- 646
4 195 194	Fixed length	8,030 x 5,900 m 360°	17.1 t 2	- 656
4 195 195	Intermediate length	8,030 x 5,900 m 360°	17.1 t 2	- 662
4 195 204	Fixed length	8,030 x 5,900 m 360°	14.8 t 2	- 672
4 195 205	Intermediate length	8,030 x 5,900 m 360°	14.8 t 2	- 678
4 195 214	Fixed length	8,030 x 5,900 m 360°	12.5 t 2	- 688
4 195 215	Intermediate length	8,030 x 5,900 m 360°	12.5 t 2	- 694
4 195 224	Fixed length	8,030 x 5,900 m 360°	10.2 t 2	- 704
4 195 225	Intermediate length	8,030 x 5,900 m 360°	10.2 t 2	- 710
4 195 234	Fixed length	8,030 x 5,900 m 360°	7.9 t 2	- 720
4 195 235	Intermediate length	8,030 x 5,900 m 360°	7.9 t 2	- 726
4 195 244	Fixed length	8,030 x 5,900 m 360°	5.6 t 2	- 736
4 195 245	Intermediate length	8,030 x 5,900 m 360°	5.6 t 2	- 742
4 195 254	Fixed length	8,030 x 5,900 m 360°	3.3 t 2	- 752
4 195 255	Intermediate length	8,030 x 5,900 m 360°	3.3 t 2	- 758

	Crane with 14.8 t counterweight									
	Outrigger base - length 8,030 m - width 5,900 m									
	Main boom - intermediate length in m									
	21,01-22,02	22,02-26,63	26,63-30,38	30,38-31,42	31,42-36,09	36,09-39,90	39,90-40,95	40,95-46,21	46,21-49,46	49,46-50,51
Tel. sec. I	0	0	0	0	0	0	0	0	0	0
Tel. sec. II	0	0	0	0	0	0	0	0.00-0.55	0.55-0.89	0.89-1.00
Tel. sec. III	0	0	0	0	0.00-0.49	0.49-0.89	0.89-1.00	1.00	1.00	1.00
Tel. sec. IV	0	0.00-0.49	0.49-0.89	0.89-1.00	1.00	1.00	1.00	1.00	1.00	1.00
Tel. sec. V	0.89-1.00	1.00	1.00	1.00	1.00	1.00	1.00	1.00	1.00	1.00
Slewing range	360°									
Radius in m	Lifting capacities in t									
3.0	23.0	35.0								
4.0	23.0	31.0	27.5							
5.0	23.0	27.5	26.0	21.5	23.5					
6.0	23.0	24.5	23.5	21.5	23.0	19.1	18.0			
7.0	22.5	22.5	21.5	20.5	20.5	18.5	18.0	18.0		
8.0	20.5	20.5	20.0	18.8	18.8	17.8	17.8	18.0	16.4	15.8
9.0	18.8	18.8	18.5	17.2	17.2	17.2	17.2	17.9	16.4	15.8
10.0	17.4	17.4	17.1	15.7	15.7	16.5	16.5	16.5	16.4	15.8
11.0	16.1	16.1	15.8	14.6	14.6	15.8	15.4	15.4	15.4	15.1
12.0	15.1	15.1	14.7	13.6	13.6	14.9	14.3	14.3	13.7	13.5
13.0	14.2	14.2	13.8	12.7	12.7	13.8	13.4	12.8	12.3	12.1
14.0	12.6	12.8	12.9	11.9	11.9	12.4	12.4	11.6	11.1	10.9
15.0	11.0	11.2	11.9	11.2	11.2	11.3	11.2	10.5	10.0	9.9
16.0	9.7	9.9	10.8	10.5	10.5	10.2	10.2	9.5	9.1	9.0
18.0	7.6	7.8	8.7	8.9	8.8	8.5	8.5	7.9	7.5	7.4
19.7	6.3									
20.0		6.2	7.0	7.2	7.3	7.2	7.2	6.6	6.3	6.2
22.0		4.9	5.7	5.9	6.0	6.0	6.0	5.5	5.2	5.1
24.0		3.9	4.7	4.9	4.9	4.9	5.0	4.6	4.4	4.3
24.3		3.8								
26.0			3.8	4.0	4.0	4.1	4.1	3.8	3.6	3.5
28.0				3.3	3.3	3.3	3.3	3.1	2.9	2.8
28.1			3.1							
29.1				2.9						
30.0					2.7	2.7	2.7	2.4	2.3	2.2
32.0					2.1	2.1	2.2	1.9	1.7	1.7
33.8					1.7					
34.0						1.7	1.7	1.4	1.3	1.2
36.0						1.3	1.3	1.0	0.8	
37.6						1.0				
38.0							0.9			
38.6							0.8			
RCL code	1602									
Max. permitted	14 m/s							12 m/s		
windspeed	14 m/s				13 m/s	12 m/s		11 m/s		

- The lifting capacities according to the real mainboom length below 15° mainboom angle can be significantly lower than the above capacities.
- The boom must be extended/retracted prior to the load being lifted to the required boom intermediate length.

	Crane with 10.2 t counterweight								
	Outrigger base - length 8,030 m - width 5,900 m								
	Main boom - intermediate length in m								
	12,81-17,42	17,42-22,09	22,09-27,35	27,35-32,57	17,42-21,18	21,18-25,85	22,09-25,90	21,18-22,21	22,21-26,88
Tel. sec. I	0	0	0	0.00-0.55	0	0	0	0	0
Tel. sec. II	0	0	0.00-0.55	0.55	0	0	0	0	0
Tel. sec. III	0	0.00-0.49	0.49	0.49	0	0.00-0.49	0.49-0.89	0	0.00-0.49
Tel. sec. IV	0.00-0.49	0.49	0.49	0.49	0.49-0.89	0.89	0.49	0.89-1.00	1.00
Tel. sec. V	0	0	0	0	0	0	0	0	0
Slewing range	360°								
Radius in m	Lifting capacities in t								
3.0	35.5	32.0	30.0		32.5	32.0	32.0	21.5	28.0
4.0	35.5	32.0	30.0	28.0	32.5	32.0	32.0	21.5	28.0
5.0	35.5	32.0	30.0	28.0	32.5	32.0	32.0	21.5	28.0
6.0	35.5	32.0	30.0	28.0	32.5	32.0	32.0	21.5	26.5
7.0	30.0	29.0	27.0	24.5	29.5	28.5	28.0	21.5	24.5
8.0	24.0	24.0	22.5	20.0	24.0	23.5	23.0	21.5	22.5
9.0	19.4	19.8	18.9	16.9	20.0	19.7	19.5	20.5	19.7
10.0	15.7	16.8	16.1	14.3	17.0	16.8	16.6	17.6	16.8
11.0	12.8	14.3	13.8	12.2	14.3	14.4	14.3	15.2	14.5
12.0	10.5	12.0	11.9	10.5	12.0	12.5	12.4	12.9	12.6
13.0	8.7	10.1	10.4	9.1	10.1	10.9	10.8	11.0	11.0
14.0	7.1	8.6	9.0	7.9	8.6	9.3	9.2	9.4	9.6
15.0		7.3	7.7	6.8	7.3	8.0	7.9	8.1	8.2
15.1	5.7								
16.0		6.2	6.6	5.9	6.2	6.9	6.8	6.9	7.1
18.0		4.4	4.8	4.1	4.4	5.1	5.0	5.1	5.3
18.9					3.8				
19.8		3.2							
19.9								3.8	
20.0			3.4	2.8		3.7	3.6		3.9
22.0			2.3	1.7		2.6	2.5		2.8
23.6						2.0	1.9		
24.0			1.5	0.8					1.9
24.6									1.7
25.1			1.1						
RCL code	1402								
Max. permitted	14 m/s								
windspeed	14 m/s								

- The lifting capacities according to the real mainboom length below 15° mainboom angle can be significantly lower than the above capacities.
- The boom must be extended/retracted prior to the load being lifted to the required boom intermediate length.

	Crane with 5.6 t counterweight									
	Outrigger base - length 8,030 m - width 5,900 m									
	Main boom - intermediate length in m									
	17,33-21,93	21,93-25,69	25,69-30,36	30,36-34,17	34,17-39,43	39,43-42,68	42,68-47,90	47,90-51,13	51,13-55,47	55,47-60,81
Tel. sec. I	0	0	0	0	0	0	0.00-0.55	0.55-0.89	0.00-0.55	0.55-0.89
Tel. sec. II	0	0	0	0	0.00-0.55	0.55-0.89	0.89	0.89	0.55	0.55
Tel. sec. III	0	0	0.00-0.49	0.49-0.89	0.89	0.89	0.89	0.89	0.49	0.49
Tel. sec. IV	0.00-0.49	0.49-0.89	0.89	0.89	0.89	0.89	0.89	0.89	0.49	0.49
Tel. sec. V	0.49	0.49	0.49	0.49	0.49	0.49	0.49	0.49	0.49	0.49
Slewing range	360°									
Radius in m	Lifting capacities in t									
3.0	35.0	32.5								
4.0	35.0	32.5	32.0							
5.0	35.0	31.5	31.5	26.5	26.5				28.0	
6.0	31.5	28.5	28.5	25.0	25.0	23.5			24.0	22.5
7.0	25.0	24.5	23.5	22.5	20.5	19.5	17.6		19.7	18.4
8.0	20.0	20.0	19.4	18.7	17.3	16.4	14.8	13.8	16.3	15.2
9.0	16.7	17.0	16.4	15.9	14.7	14.0	12.6	11.7	13.7	12.7
10.0	14.1	14.4	14.0	13.7	12.6	12.0	10.8	10.0	11.6	10.8
11.0	11.7	12.4	12.1	11.8	10.9	10.4	9.3	8.6	9.9	9.1
12.0	9.7	10.7	10.5	10.3	9.5	9.0	8.0	7.4	8.5	7.8
13.0	8.1	9.1	9.2	9.1	8.4	7.9	7.0	6.4	7.3	6.6
14.0	6.7	7.7	8.0	8.0	7.3	6.9	6.0	5.5	6.3	5.7
15.0	5.6	6.6	6.9	7.0	6.4	6.1	5.2	4.7	5.4	4.8
16.0	4.7	5.6	6.0	6.2	5.7	5.3	4.5	4.0	4.6	4.1
18.0	3.1	4.1	4.4	4.7	4.4	4.1	3.3	2.9	3.2	2.8
19.6	2.2									
20.0		2.9	3.2	3.4	3.2	3.0	2.4	1.9	2.1	1.7
22.0		1.9	2.2	2.5	2.3	2.1	1.6	1.2	1.1	
23.4		1.4								
24.0			1.5	1.7	1.5	1.3	0.8			
26.0			0.8	1.0	0.8					
RCL code	1202									
Max. permitted	14 m/s						12 m/s		14 m/s	
wind speed	14 m/s						12 m/s		14 m/s	

- The lifting capacities according to the real mainboom length below 15° mainboom angle can be significantly lower than the above capacities.
- The boom must be extended/retracted prior to the load being lifted to the required boom intermediate length.

	Crane with 10.2 t counterweight		
	Outrigger base - length 8,030 m - width 5,900 m		
	Main boom - intermediate length in m		
	12,81-18,04	12,81-18,07	18,07-23,29
Tel. sec. I	0.00-0.55	0	0.00-0.55
Tel. sec. II	0	0.00-0.55	0.55
Tel. sec. III	0	0	0
Tel. sec. IV	0	0	0
Tel. sec. V	0	0	0
Slewing range	+- 0° over rear		
Radius in m	Lifting capacities in t		
3.0	28.5	30.5	28.5
4.0	28.5	30.5	28.5
5.0	28.5	30.5	28.5
6.0	28.5	30.5	28.5
7.0	28.5	30.5	28.5
8.0	28.5	30.5	28.5
9.0	28.5	30.0	27.0
10.0	24.5	25.5	23.0
11.0	20.0	21.0	19.8
12.0	16.9	17.9	17.1
13.0	14.3	15.3	14.8
14.0	12.2	13.1	12.7
15.0	10.4	11.3	10.9
15.7	9.3		
15.8		10.0	
16.0			9.4
18.0			7.1
20.0			5.3
21.0			4.7
RCL code	1412		
Max. permitted	14 m/s		
windspeed	14 m/s		

- The lifting capacities according to the real mainboom length below 15° mainboom angle can be significantly lower than the above capacities.
- The boom must be extended/retracted prior to the load being lifted to the required boom intermediate length.

	Crane with 44.5 t counterweight						
	Outrigger base - length 8,030 m - width 5,100 m						
	Main boom - intermediate length in m						
	12,81-18,07	18,07-21,32	21,32-26,54	18,07-23,29	23,29-26,52	21,32-22,37	22,37-27,60
Tel. sec. I	0	0	0.00-0.55	0.00-0.55	0.55-0.89	0	0.00-0.55
Tel. sec. II	0.00-0.55	0.55-0.89	0.89	0.55	0.55	0.89-1.00	1.00
Tel. sec. III	0	0	0	0	0	0	0
Tel. sec. IV	0	0	0	0	0	0	0
Tel. sec. V	0	0	0	0	0	0	0
Slewing range	360°						
Radius in m	Lifting capacities in t						
3.0					28.0		
4.0	30.5	30.5	28.0	28.5	28.0	20.5	19.0
5.0	30.5	30.5	28.0	28.5	28.0	20.5	19.0
6.0	30.5	30.5	28.0	28.5	28.0	20.5	19.0
7.0	30.5	30.5	28.0	28.5	28.0	20.5	19.0
8.0	30.5	30.5	28.0	28.5	28.0	20.5	19.0
9.0	30.5	30.5	28.0	28.5	28.0	20.5	19.0
10.0	30.5	30.5	28.0	28.5	28.0	20.5	19.0
11.0	30.5	30.5	28.0	28.5	28.0	20.5	19.0
12.0	26.0	26.5	25.0	26.0	24.5	20.5	19.0
13.0	23.0	23.0	22.5	22.5	22.0	20.5	19.0
14.0	20.5	20.5	20.0	19.9	19.6	20.5	19.0
15.0	18.0	18.1	17.8	17.6	17.4	18.2	18.1
15.8	10.0						
16.0		16.2	15.9	15.7	15.5	16.3	16.2
18.0		13.1	12.8	12.7	12.4	13.2	13.1
19.0		7.2					
20.0			10.5	10.3	10.1		10.7
20.1						6.5	
21.0				5.5			
22.0			8.6		8.2		8.8
24.0			7.1		6.7		7.2
24.2			3.9		3.5		
25.3							3.5
RCL code	2303						
Max. permitted	14 m/s						
windspeed	14 m/s						

- The lifting capacities according to the real mainboom length below 15° mainboom angle can be significantly lower than the above capacities.
- The boom must be extended/retracted prior to the load being lifted to the required boom intermediate length.

	Crane with 17.1 t counterweight									
	Outrigger base - length 8,030 m - width 5,100 m									
	Main boom - fixed length in m									
	40.76	40.95	43.11	43.56	44.52	46.21	46.36	47.24	47.37	48.33
Tel. sec. I	0.55	0.00	0.00	0.89	0.55	0.00	0.00	0.89	0.89	0.55
Tel. sec. II	0.55	0.00	0.55	0.89	0.55	0.55	0.89	0.89	0.89	0.55
Tel. sec. III	0.49	1.00	0.89	0.49	0.49	1.00	0.89	0.49	0.89	0.89
Tel. sec. IV	0.49	1.00	0.89	0.49	0.89	1.00	0.89	0.49	0.49	0.89
Tel. sec. V	0.89	1.00	0.89	0.49	0.89	1.00	0.89	0.89	0.49	0.89
Slewing range	360°									
Radius in m	Lifting capacities in t									
7.0	24.5	18.0	22.5	22.5	24.0					
8.0	21.0	18.0	21.5	19.2	20.5	18.0	20.5	19.1	18.7	19.9
9.0	18.2	17.9	18.9	16.5	17.9	18.0	18.0	16.5	16.1	17.3
10.0	15.8	16.6	16.6	14.3	15.7	16.3	15.9	14.4	14.0	15.2
11.0	13.9	15.4	14.7	12.5	13.8	14.5	14.0	12.6	12.3	13.4
12.0	12.3	13.8	13.1	10.9	12.3	13.0	12.5	11.1	10.8	11.9
13.0	10.9	12.4	11.8	9.6	10.9	11.6	11.2	9.8	9.5	10.6
14.0	9.7	11.2	10.6	8.4	9.8	10.5	10.1	8.7	8.4	9.5
15.0	8.7	10.1	9.6	7.5	8.8	9.5	9.1	7.8	7.4	8.6
16.0	7.8	9.2	8.7	6.6	7.9	8.6	8.2	6.9	6.6	7.7
18.0	6.2	7.6	7.1	5.1	6.4	7.1	6.7	5.5	5.1	6.3
20.0	5.0	6.4	5.9	3.9	5.2	5.9	5.5	4.3	4.0	5.1
22.0	4.0	5.4	4.9	2.9	4.2	4.9	4.5	3.3	3.0	4.1
24.0	3.1	4.4	4.1	2.1	3.4	4.1	3.7	2.5	2.2	3.3
26.0	2.3	3.6	3.2	1.3	2.6	3.4	3.0	1.8	1.5	2.6
28.0	1.6	2.9	2.5		1.9	2.7	2.3	1.1	0.8	2.0
30.0	1.0	2.3	1.9		1.3	2.1	1.7			1.4
32.0		1.8	1.4		0.8	1.6	1.2			0.9
34.0		1.3	1.0			1.1				
36.0		1.0								
RCL code	1703									
Max. permitted	14 m/s					12 m/s				
wind speed	13 m/s	12 m/s								

	Crane with 12.5 t counterweight									
	Outrigger base - length 8,030 m - width 5,100 m									
	Main boom - fixed length in m									
	22.74	23.29	25.61	26.60	26.63	27.35	27.96	29.37	30.28	31.42
Tel. sec. I	0.00	0.55	0.00	0.00	0.00	0.00	0.55	0.00	0.00	0.00
Tel. sec. II	0.55	0.55	0.00	0.00	0.00	0.55	0.55	0.00	0.00	0.00
Tel. sec. III	0.49	0.00	0.00	0.49	0.00	0.49	0.49	0.00	0.49	0.00
Tel. sec. IV	0.00	0.00	0.49	0.49	0.49	0.49	0.00	0.89	0.49	1.00
Tel. sec. V	0.00	0.00	0.89	0.49	1.00	0.00	0.00	0.89	0.89	1.00
Slewing range	360°									
Radius in m	Lifting capacities in t									
3.0	76.0	77.0								
4.0	54.0	51.0	36.0	41.0	33.0	50.0	47.0			
5.0	40.0	37.5	32.0	40.0	30.0	37.5	35.0	28.0	34.0	25.0
6.0	31.0	28.5	28.5	32.0	27.5	29.5	27.5	25.0	31.0	23.0
7.0	24.5	22.5	26.0	26.0	25.0	24.0	22.0	23.0	25.5	20.5
8.0	20.0	18.4	23.0	22.0	22.5	20.0	18.1	21.0	21.5	18.8
9.0	16.8	15.1	19.5	18.6	19.4	16.9	15.0	18.9	18.5	17.2
10.0	14.2	12.6	16.8	16.0	16.8	14.4	12.6	16.4	16.0	15.8
11.0	12.0	10.5	14.7	13.9	14.7	12.4	10.6	14.4	14.0	14.3
12.0	10.2	8.7	13.0	12.2	13.0	10.7	9.0	12.7	12.4	12.6
13.0	8.5	7.1	11.5	10.8	11.5	9.3	7.7	11.3	11.0	11.3
14.0	7.1	5.7	10.1	9.5	10.3	8.1	6.5	10.1	9.8	10.1
15.0	5.9	4.5	8.8	8.3	9.0	6.9	5.4	9.0	8.8	9.0
16.0	4.9	3.5	7.8	7.2	8.0	5.9	4.3	8.0	7.8	8.2
18.0	3.2	1.9	6.1	5.5	6.2	4.2	2.7	6.3	6.1	6.5
20.0	2.0		4.7	4.2	4.9	2.9	1.5	4.9	4.8	5.1
20.4	1.8									
22.0			3.7	3.1	3.8	1.9		3.9	3.7	4.0
23.3			3.1							
24.0				2.3	3.0	1.1		3.0	2.9	3.2
24.3				2.2	2.9					
26.0								2.3	2.1	2.5
27.1								2.0		
28.0									1.6	1.9
29.1										1.6
RCL code	1503									
Max. permitted	14 m/s									
windspeed	14 m/s									

	Crane with 5.6 t counterweight							
	Outrigger base - length 8,030 m - width 5,100 m							
	Main boom - intermediate length in m							
	12,81-17,48	17,48-21,30	21,30-26,55	17,48-22,74	22,74-25,99	22,74-27,96	21,30-22,34	22,34-27,60
Tel. sec. I	0	0	0	0	0	0.00-0.55	0	0
Tel. sec. II	0	0	0.00-0.55	0.00-0.55	0.55-0.89	0.55	0	0.00-0.55
Tel. sec. III	0.00-0.49	0.49-0.89	0.89	0.49	0.49	0.49	0.89-1.00	1.00
Tel. sec. IV	0	0	0	0	0	0	0	0
Tel. sec. V	0	0	0	0	0	0	0	0
Slewing range	360°							
Radius in m	Lifting capacities in t							
3.0	32.5	32.0	30.5	30.5	30.5	28.0	22.5	18.0
4.0	32.5	32.0	30.5	30.5	30.5	28.0	22.5	18.0
5.0	32.5	31.0	28.0	30.0	28.0	26.0	22.5	18.0
6.0	24.5	23.5	21.5	23.0	21.5	20.0	22.5	18.0
7.0	18.8	18.5	17.3	17.9	16.9	15.8	18.7	17.3
8.0	14.9	14.8	14.0	14.3	13.6	12.6	15.1	14.1
9.0	11.4	12.0	11.4	11.7	11.1	10.2	12.3	11.6
10.0	8.8	9.7	9.4	9.5	9.1	8.3	10.2	9.6
11.0	6.8	7.7	7.8	7.6	7.4	6.7	8.2	8.0
12.0	5.2	6.1	6.4	6.0	6.0	5.4	6.5	6.7
13.0	3.9	4.7	5.1	4.7	4.7	4.2	5.2	5.4
14.0	2.8	3.6	4.0	3.6	3.6	3.1	4.1	4.3
15.0	1.9	2.7	3.1	2.7	2.6	2.2	3.2	3.4
15.2	1.8							
16.0		1.9	2.3	1.9	1.9	1.4	2.4	2.6
18.0			1.0				1.1	1.3
RCL code	1203							
Max. permitted windspeed	14 m/s							
windspeed	14 m/s							

- The lifting capacities according to the real mainboom length below 15° mainboom angle can be significantly lower than the above capacities.
- The boom must be extended/retracted prior to the load being lifted to the required boom intermediate length.

	Crane with 5.6 t counterweight					
	Outrigger base - length 8,030 m - width 2,500 m					
	Main boom - intermediate length in m					
	12,81-17,33	17,33-21,01	21,01-22,02	22,02-26,63	26,63-30,38	30,38-31,42
Tel. sec. I	0	0	0	0	0	0
Tel. sec. II	0	0	0	0	0	0
Tel. sec. III	0	0	0	0	0	0
Tel. sec. IV	0	0	0	0.00-0.49	0.49-0.89	0.89-1.00
Tel. sec. V	0.00-0.49	0.49-0.89	0.89-1.00	1.00	1.00	1.00
Slewing range	360°					
Radius in m	Lifting capacities in t					
3.0	19.6	19.5	20.0	17.8		
4.0	13.6	14.1	14.8	13.4	13.1	
5.0	9.6	10.6	11.3	10.3	10.3	10.4
6.0	6.9	8.0	8.8	8.1	8.3	8.4
7.0	4.9	6.1	6.9	6.4	6.7	6.8
8.0	3.4	4.7	5.5	5.1	5.4	5.6
9.0	1.8	3.5	4.3	4.0	4.4	4.6
10.0		2.5	3.3	3.1	3.6	3.7
11.0		1.5	2.5	2.3	2.9	3.0
12.0			1.6	1.7	2.3	2.4
13.0			0.9	1.1	1.7	1.9
14.0					1.3	1.4
15.0					0.8	1.0
RCL code	1204					
Max. permitted	14 m/s					
windspeed	14 m/s					

- The lifting capacities according to the real mainboom length below 15° mainboom angle can be significantly lower than the above capacities.
- The boom must be extended/retracted prior to the load being lifted to the required boom intermediate length.

	Crane with 21.7 t counterweight (on wheels)					
	Main boom - intermediate length in m					
	12,81-17,33	17,33-21,01	21,01-22,02	22,02-26,63	26,63-30,38	30,38-31,42
Tel. sec. I	0	0	0	0	0	0
Tel. sec. II	0	0	0	0	0	0
Tel. sec. III	0	0	0	0	0	0
Tel. sec. IV	0	0	0	0.00-0.49	0.49-0.89	0.89-1.00
Tel. sec. V	0.00-0.49	0.49-0.89	0.89-1.00	1.00	1.00	1.00
Slewing range	± 0° over rear					
Radius in m	Lifting capacities in t					
3.0	21.0	21.5	22.0	22.0		
4.0	17.5	18.3	18.8	18.7	18.2	
5.0	14.8	15.7	16.2	15.4	15.2	15.2
6.0	12.4	13.1	13.7	12.8	12.8	12.9
7.0	10.1	10.9	11.5	10.8	11.0	11.0
8.0	8.2	9.1	9.8	9.2	9.5	9.5
9.0	6.7	7.7	8.4	7.9	8.2	8.3
10.0	5.4	6.5	7.2	6.8	7.1	7.2
11.0	4.3	5.5	6.2	5.8	6.2	6.3
12.0	3.3	4.6	5.3	5.0	5.4	5.6
13.0	2.3	3.8	4.5	4.3	4.8	4.9
14.0	1.5	3.1	3.9	3.7	4.2	4.3
15.0		2.4	3.3	3.1	3.6	3.8
16.0		1.8	2.6	2.6	3.1	3.3
18.0		0.8	1.6	1.8	2.3	2.5
19.7			0.9			
20.0				1.0	1.7	1.8
22.0					1.0	1.2
RCL code	1915					
Max. permitted windspeed	14 m/s					
windspeed	14 m/s					

Working with the crane when it is free on wheels

- The telescopic sections may only be extended according to the telescoping statuses listed above.
- The suspension must be locked.
- The outrigger beams must be extended according to the available space and the outrigger cylinders must be extended to just above the ground.
- Slewing gear brake applied.
- Minimum tyre pressure: 9.0 bar with 14.00 R25 tyres
9.0 bar with 16.00 R25 tyres
7.0 bar with 20.50 R25 tyres

Moving loads is only permitted under the following conditions:

- Load is lashed.
- Driving speed: lowest possible speed (0.4 m/s or 1.5 km/h).

4 195 182	Fixed length	8,030 x 6,700 m 360°	19.4 t 2	- 400
4 195 183	Intermediate length	8,030 x 6,700 m 360°	19.4 t 2	- 406
4 195 192	Fixed length	8,030 x 6,700 m 360°	17.1 t 2	- 418
4 195 193	Intermediate length	8,030 x 6,700 m 360°	17.1 t 2	- 424
4 195 202	Fixed length	8,030 x 6,700 m 360°	14.8 t 2	- 434
4 195 203	Intermediate length	8,030 x 6,700 m 360°	14.8 t 2	- 440
4 195 212	Fixed length	8,030 x 6,700 m 360°	12.5 t 2	- 450
4 195 213	Intermediate length	8,030 x 6,700 m 360°	12.5 t 2	- 456
4 195 222	Fixed length	8,030 x 6,700 m 360°	10.2 t 2	- 466
4 195 223	Intermediate length	8,030 x 6,700 m 360°	10.2 t 2	- 472
4 195 232	Fixed length	8,030 x 6,700 m 360°	7.9 t 2	- 482
4 195 233	Intermediate length	8,030 x 6,700 m 360°	7.9 t 2	- 488
4 195 242	Fixed length	8,030 x 6,700 m 360°	5.6 t 2	- 498
4 195 243	Intermediate length	8,030 x 6,700 m 360°	5.6 t 2	- 504
4 195 252	Fixed length	8,030 x 6,700 m 360°	3.3 t 2	- 514
4 195 253	Intermediate length	8,030 x 6,700 m 360°	3.3 t 2	- 520
4 195 262	Fixed length	8,030 x 6,700 m 360°	1 t 2	- 530
4 195 263	Intermediate length	8,030 x 6,700 m 360°	1 t 2	- 536
4 195 134	Fixed length	8,030 x 5,900 m 360°	44.5 t 2	- 546
4 195 135	Intermediate length	8,030 x 5,900 m 360°	44.5 t 2	- 552
4 195 144	Fixed length	8,030 x 5,900 m 360°	30.9 t 2	- 568
4 195 145	Intermediate length	8,030 x 5,900 m 360°	30.9 t 2	- 574
4 195 154	Fixed length	8,030 x 5,900 m 360°	26.3 t 2	- 586
4 195 155	Intermediate length	8,030 x 5,900 m 360°	26.3 t 2	- 592
4 195 164	Fixed length	8,030 x 5,900 m 360°	24 t 2	- 604
4 195 165	Intermediate length	8,030 x 5,900 m 360°	24 t 2	- 610
4 195 174	Fixed length	8,030 x 5,900 m 360°	21.7 t 2	- 622
4 195 175	Intermediate length	8,030 x 5,900 m 360°	21.7 t 2	- 628
4 195 184	Fixed length	8,030 x 5,900 m 360°	19.4 t 2	- 640
4 195 185	Intermediate length	8,030 x 5,900 m 360°	19.4 t 2	- 646
4 195 194	Fixed length	8,030 x 5,900 m 360°	17.1 t 2	- 656
4 195 195	Intermediate length	8,030 x 5,900 m 360°	17.1 t 2	- 662
4 195 204	Fixed length	8,030 x 5,900 m 360°	14.8 t 2	- 672
4 195 205	Intermediate length	8,030 x 5,900 m 360°	14.8 t 2	- 678
4 195 214	Fixed length	8,030 x 5,900 m 360°	12.5 t 2	- 688
4 195 215	Intermediate length	8,030 x 5,900 m 360°	12.5 t 2	- 694
4 195 224	Fixed length	8,030 x 5,900 m 360°	10.2 t 2	- 704
4 195 225	Intermediate length	8,030 x 5,900 m 360°	10.2 t 2	- 710
4 195 234	Fixed length	8,030 x 5,900 m 360°	7.9 t 2	- 720
4 195 235	Intermediate length	8,030 x 5,900 m 360°	7.9 t 2	- 726
4 195 244	Fixed length	8,030 x 5,900 m 360°	5.6 t 2	- 736
4 195 245	Intermediate length	8,030 x 5,900 m 360°	5.6 t 2	- 742
4 195 254	Fixed length	8,030 x 5,900 m 360°	3.3 t 2	- 752
4 195 255	Intermediate length	8,030 x 5,900 m 360°	3.3 t 2	- 758

4 195 415

	Crane with 44.5 t counterweight						
	Outrigger base - length 8,030 m - width 7,600 m						
	Length of swing-away jib 1.8 + 9.4 m						
	Offset of swing-away jib 15 - 30°, (intermediate angle)						
	Main boom - fixed length in m						
	37.85	40.31	40.76	43.56	44.52	46.36	47.37
Tel. sec. I	0.00	0.89	0.55	0.89	0.55	0.00	0.89
Tel. sec. II	0.00	0.55	0.55	0.89	0.55	0.89	0.89
Tel. sec. III	0.89	0.49	0.49	0.49	0.49	0.89	0.89
Tel. sec. IV	0.89	0.49	0.49	0.49	0.89	0.89	0.49
Tel. sec. V	0.89	0.49	0.89	0.49	0.89	0.89	0.49
Slewing range	360°						
Radius in m	Lifting capacities in t						
12.0	10.8						
13.0	10.6	11.1	10.9	10.9			
14.0	10.4	10.9	10.8	10.8	10.4	9.9	10.3
15.0	10.1	10.7	10.5	10.7	10.3	9.9	10.3
16.0	9.7	10.5	10.1	10.5	10.0	9.8	10.2
18.0	9.0	10.1	9.5	10.2	9.5	9.4	10.1
20.0	8.1	9.8	8.9	9.9	8.8	8.8	9.9
22.0	7.5	9.5	8.2	9.6	8.1	8.0	9.7
24.0	7.0	9.3	7.8	9.4	7.6	7.6	9.4
26.0	6.5	9.0	7.4	9.1	7.1	7.1	9.2
28.0	6.0	8.6	7.0	8.8	6.7	6.7	8.8
30.0	5.5	8.1	6.7	8.3	6.3	6.3	8.2
32.0	5.1	7.8	6.4	8.0	5.9	5.9	7.7
34.0	4.7	7.6	6.1	7.6	5.6	5.5	7.1
36.0	4.4	6.8	5.9	6.7	5.3	5.2	6.7
38.0	4.1	6.1	5.7	5.9	5.1	4.8	6.0
40.0	3.8	5.4	5.5	5.3	4.8	4.5	5.3
42.0	3.5	4.8	5.3	4.7	4.6	4.2	4.7
44.0		4.2	4.8	4.1	4.4	3.9	4.1
46.0				3.6	4.2	3.6	3.6
48.0				3.1	4.0	3.3	3.1
50.0						3.1	2.7
RCL code	4300						
Max. permitted	12 m/s					10 m/s	
wind speed	11 m/s	8 m/s		7 m/s		8 m/s	7 m/s

	Crane with 30.9 t counterweight									
	Outrigger base - length 8,030 m - width 7,600 m									
	Length of swing-away jib 1.8 + 9.4 m									
	Offset of swing-away jib 30 - 50°, (intermediate angle)									
	Main boom - fixed length in m									
	12.81	17.33	21.93	26.60	27.96	29.37	31.86	32.57	34.04	37.08
Tel. sec. I	0.00	0.00	0.00	0.00	0.55	0.00	0.00	0.55	0.00	0.55
Tel. sec. II	0.00	0.00	0.00	0.00	0.55	0.00	0.55	0.55	0.00	0.55
Tel. sec. III	0.00	0.00	0.00	0.49	0.49	0.00	0.49	0.49	0.49	0.49
Tel. sec. IV	0.00	0.00	0.49	0.49	0.00	0.89	0.49	0.49	0.89	0.49
Tel. sec. V	0.00	0.49	0.49	0.49	0.00	0.89	0.49	0.00	0.89	0.49
Slewing range	360°									
Radius in m	Lifting capacities in t									
9.0	9.2									
10.0	9.0	9.1								
11.0	8.8	9.0	9.1							
12.0	8.6	8.8	8.9	9.0	9.1					
13.0	8.3	8.7	8.8	8.9	9.0	8.9	9.0	9.1		
14.0	8.2	8.5	8.7	8.8	8.9	8.8	8.9	9.0	8.9	9.0
15.0	8.2	8.3	8.6	8.7	8.8	8.7	8.8	8.9	8.8	8.9
16.0	8.1	8.2	8.3	8.6	8.7	8.6	8.7	8.8	8.7	8.8
18.0		8.1	8.2	8.3	8.5	8.0	8.6	8.6	8.3	8.6
20.0		7.6	8.1	8.2	8.2	7.3	8.3	8.3	7.8	8.5
22.0			7.8	8.1	8.2	6.7	8.2	8.2	7.2	8.2
24.0				7.9	8.1	6.1	8.1	8.1	6.7	8.2
26.0				7.6	8.1	5.6	8.0	8.1	6.2	8.1
28.0					8.0	5.2	7.7	8.1	5.7	8.0
30.0							7.4	7.1	5.3	7.5
32.0									5.0	6.5
34.0										5.7
RCL code	4200									
Max. permitted	14 m/s					12 m/s				
wind speed	14 m/s			12 m/s	14 m/s	12 m/s	11 m/s	12 m/s	10 m/s	

	Crane with 26.3 t counterweight				
	Outrigger base - length 8,030 m - width 7,600 m				
	Length of swing-away jib 1.8 + 9.4 m				
	Offset of swing-away jib 30 - 50°, (intermediate angle)				
	Main boom - fixed length in m				
	51.13	51.58	54.81	57.90	60.00
Tel. sec. I	0.89	0.55	0.89	0.89	1.00
Tel. sec. II	0.89	0.89	0.89	0.89	1.00
Tel. sec. III	0.89	0.89	0.89	1.00	1.00
Tel. sec. IV	0.89	0.89	0.89	1.00	1.00
Tel. sec. V	0.49	0.89	0.89	1.00	1.00
Slewing range	360°				
Radius in m	Lifting capacities in t				
18.0	8.7	8.5	7.9		
20.0	8.6	8.5	7.9	7.2	6.7
22.0	8.3	8.1	7.9	7.2	6.7
24.0	8.2	7.7	7.8	7.0	6.7
26.0	7.9	7.3	7.4	6.6	6.6
28.0	6.9	7.0	6.9	6.2	6.2
30.0	6.0	6.5	6.1	5.8	5.8
32.0	5.2	5.7	5.3	5.3	5.1
34.0	4.4	4.9	4.6	4.6	4.4
36.0	3.7	4.2	3.9	4.0	3.8
38.0	3.1	3.6	3.3	3.4	3.2
40.0	2.5	3.0	2.7	2.8	2.7
42.0	2.0	2.5	2.2	2.3	2.2
44.0	1.5	2.1	1.7	1.8	1.7
46.0			1.3	1.4	1.3
48.0				1.0	0.9
RCL code	4100				
Max. permitted	10 m/s				
wind speed	9 m/s			8 m/s	

4 195 580

	Crane with 24 t counterweight									
	Outrigger base - length 8,030 m - width 7,600 m									
	Length of swing-away jib 1.8 + 16.0 m									
	Offset of swing-away jib 0°									
	Main boom - fixed length in m									
	12.81	17.33	21.93	26.60	27.96	29.37	31.86	32.57	34.04	37.08
Tel. sec. I	0.00	0.00	0.00	0.00	0.55	0.00	0.00	0.55	0.00	0.55
Tel. sec. II	0.00	0.00	0.00	0.00	0.55	0.00	0.55	0.55	0.00	0.55
Tel. sec. III	0.00	0.00	0.00	0.49	0.49	0.00	0.49	0.49	0.49	0.49
Tel. sec. IV	0.00	0.00	0.49	0.49	0.00	0.89	0.49	0.49	0.89	0.49
Tel. sec. V	0.00	0.49	0.49	0.49	0.00	0.89	0.49	0.00	0.89	0.49
Slewing range	360°									
Radius in m	Lifting capacities in t									
38.0				4.3	2.9	3.3	4.0	3.0	3.7	3.2
40.0				4.0	2.4	3.1	3.4	2.5	3.5	2.7
42.0				3.6	2.0	2.9	3.0	2.1	3.3	2.3
42.6				2.4						
43.9					0.9					
44.0						2.7	2.6	1.7	3.1	1.9
45.3						2.2				
46.0							2.2	1.3	2.8	1.5
47.8							1.2			
48.0								1.0	2.5	1.2
50.0									1.5	0.9
RCL code	4004									
Max. permitted	14 m/s			12 m/s						
wind speed	14 m/s			12 m/s		11 m/s		10 m/s		

4 195 590

	Crane with 21.7 t counterweight				
	Outrigger base - length 8,030 m - width 7,600 m				
	Length of swing-away jib 1.8 + 16.0 m				
	Offset of swing-away jib 0°				
	Main boom - fixed length in m				
	51.13	51.58	54.81	57.90	60.00
Tel. sec. I	0.89	0.55	0.89	0.89	1.00
Tel. sec. II	0.89	0.89	0.89	0.89	1.00
Tel. sec. III	0.89	0.89	0.89	1.00	1.00
Tel. sec. IV	0.89	0.89	0.89	1.00	1.00
Tel. sec. V	0.49	0.89	0.89	1.00	1.00
Slewing range	360°				
Radius in m	Lifting capacities in t				
11.0	6.2	5.9			
12.0	6.1	5.9	5.5		
13.0	6.1	5.9	5.5	4.8	4.6
14.0	6.1	5.8	5.5	4.8	4.6
15.0	6.0	5.8	5.5	4.8	4.6
16.0	6.0	5.8	5.5	4.8	4.6
18.0	5.9	5.7	5.5	4.8	4.6
20.0	5.9	5.7	5.4	4.8	4.6
22.0	5.8	5.6	5.4	4.8	4.6
24.0	5.7	5.5	5.3	4.8	4.6
26.0	5.7	5.5	5.3	4.8	4.6
28.0	5.3	5.4	5.2	4.8	4.6
30.0	4.5	5.0	4.6	4.5	4.3
32.0	3.9	4.4	3.9	3.9	3.7
34.0	3.3	3.8	3.4	3.3	3.1
36.0	2.8	3.3	2.8	2.8	2.6
38.0	2.2	2.7	2.4	2.4	2.2
40.0	1.7	2.2	1.9	1.9	1.8
42.0	1.3	1.8	1.5	1.5	1.4
44.0	0.9	1.4	1.1	1.1	1.0
46.0		1.1			
RCL code	3904				
Max. permitted	10 m/s				
wind speed	9 m/s				8 m/s

4 195 604

	Crane with 19.4 t counterweight									
	Outrigger base - length 8,030 m - width 7,600 m									
	Length of swing-away jib 1.8 + 16.0 m									
	Offset of swing-away jib 0 - 15°, (intermediate angle)									
	Main boom - fixed length in m									
	12.81	17.33	21.93	26.60	27.96	29.37	31.86	32.57	34.04	37.08
Tel. sec. I	0.00	0.00	0.00	0.00	0.55	0.00	0.00	0.55	0.00	0.55
Tel. sec. II	0.00	0.00	0.00	0.00	0.55	0.00	0.55	0.55	0.00	0.55
Tel. sec. III	0.00	0.00	0.00	0.49	0.49	0.00	0.49	0.49	0.49	0.49
Tel. sec. IV	0.00	0.00	0.49	0.49	0.00	0.89	0.49	0.49	0.89	0.49
Tel. sec. V	0.00	0.49	0.49	0.49	0.00	0.89	0.49	0.00	0.89	0.49
Slewing range	360°									
Radius in m	Lifting capacities in t									
43.9					0.9					
44.0						2.6	1.9	1.0	2.5	1.2
45.3						2.2				
46.0							1.5		2.1	0.8
47.8							1.2			
48.0									1.8	
50.0									1.5	
RCL code	3804									
Max. permitted	14 m/s				12 m/s					
windspeed	14 m/s		13 m/s		12 m/s		11 m/s		10 m/s	

	Crane with 17.1 t counterweight									
	Outrigger base - length 8,030 m - width 7,600 m									
	Length of swing-away jib 1.8 + 16.0 m									
	Offset of swing-away jib 15 - 30°, (intermediate angle)									
	Main boom - fixed length in m									
	12.81	17.33	21.93	26.60	27.96	29.37	31.86	32.57	34.04	37.08
Tel. sec. I	0.00	0.00	0.00	0.00	0.55	0.00	0.00	0.55	0.00	0.55
Tel. sec. II	0.00	0.00	0.00	0.00	0.55	0.00	0.55	0.55	0.00	0.55
Tel. sec. III	0.00	0.00	0.00	0.49	0.49	0.00	0.49	0.49	0.49	0.49
Tel. sec. IV	0.00	0.00	0.49	0.49	0.00	0.89	0.49	0.49	0.89	0.49
Tel. sec. V	0.00	0.49	0.49	0.49	0.00	0.89	0.49	0.00	0.89	0.49
Slewing range	360°									
Radius in m	Lifting capacities in t									
12.0	5.8	5.9								
13.0	5.6	5.7	5.8							
14.0	5.4	5.6	5.7	5.7						
15.0	5.2	5.4	5.5	5.6	5.7	5.5	5.6			
16.0	5.1	5.2	5.4	5.5	5.6	5.5	5.6	5.6	5.4	5.6
18.0	4.8	5.0	5.1	5.2	5.3	5.3	5.4	5.4	5.3	5.4
20.0	4.5	4.7	4.9	5.0	5.1	5.0	5.1	5.2	5.1	5.3
22.0	4.3	4.5	4.7	4.8	4.9	4.9	5.0	5.0	5.0	5.1
24.0	4.1	4.3	4.5	4.7	4.7	4.7	4.8	4.9	4.8	4.9
26.0	4.1	4.2	4.4	4.5	4.6	4.6	4.7	4.7	4.6	4.8
28.0		4.1	4.2	4.4	4.4	4.4	4.5	4.6	4.5	4.6
30.0		4.1	4.1	4.3	4.3	4.3	4.4	4.4	4.4	4.5
32.0			4.1	4.2	3.8	4.2	4.3	4.0	4.3	4.2
34.0			4.1	4.1	3.1	3.9	4.2	3.3	4.2	3.5
36.0				4.0	2.5	3.6	3.5	2.7	4.0	2.9
38.0				3.4	2.0	3.4	3.0	2.1	3.6	2.4
40.0					1.5	3.1	2.5	1.6	3.1	1.9
42.0						2.8	2.1	1.2	2.7	1.5
44.0							1.7	0.8	2.3	1.1
46.0									1.9	
RCL code	3704									
Max. permitted windspeed	14 m/s				12 m/s					
windspeed	14 m/s				12 m/s			11 m/s		

CLICK HERE TO **DOWNLOAD** THE COMPLETE MANUAL

- Thank you very much for reading the preview of the manual.
- You can download the complete manual from: www.heydownloads.com by clicking the link below



- Please note: If there is no response to CLICKING the link, please download this PDF first and then click on it.

CLICK HERE TO **DOWNLOAD** THE COMPLETE MANUAL

4 195 625

	Crane with 14.8 t counterweight				
	Outrigger base - length 8,030 m - width 7,600 m				
	Length of swing-away jib 1.8 + 16.0 m				
	Offset of swing-away jib 15 - 30°, (intermediate angle)				
	Main boom - fixed length in m				
	51.13	51.58	54.81	57.90	60.00
Tel. sec. I	0.89	0.55	0.89	0.89	1.00
Tel. sec. II	0.89	0.89	0.89	0.89	1.00
Tel. sec. III	0.89	0.89	0.89	1.00	1.00
Tel. sec. IV	0.89	0.89	0.89	1.00	1.00
Tel. sec. V	0.49	0.89	0.89	1.00	1.00
Slewing range	360°				
Radius in m	Lifting capacities in t				
22.0	5.0	5.0	4.9		
24.0	5.0	4.9	4.8	4.7	4.6
26.0	4.9	4.8	4.8	4.7	4.6
28.0	4.3	4.8	4.3	4.3	4.1
30.0	3.6	4.1	3.7	3.6	3.4
32.0	3.0	3.4	3.1	3.0	2.8
34.0	2.4	2.9	2.5	2.5	2.3
36.0	1.9	2.4	2.0	2.0	1.8
38.0	1.5	2.0	1.6	1.6	1.4
40.0	1.0	1.5	1.2	1.2	1.0
42.0		1.1	0.8	0.8	
RCL code	3604				
Max. permitted	10 m/s				
wind speed	10 m/s		9 m/s		10 m/s

	Crane with 12.5 t counterweight						
	Outrigger base - length 8,030 m - width 7,600 m						
	Length of swing-away jib 1.8 + 16.0 m						
	Offset of swing-away jib 30 - 50°, (intermediate angle)						
	Main boom - fixed length in m						
	37.85	40.31	40.76	43.56	44.52	46.36	47.37
Tel. sec. I	0.00	0.89	0.55	0.89	0.55	0.00	0.89
Tel. sec. II	0.00	0.55	0.55	0.89	0.55	0.89	0.89
Tel. sec. III	0.89	0.49	0.49	0.49	0.49	0.89	0.89
Tel. sec. IV	0.89	0.49	0.49	0.49	0.89	0.89	0.49
Tel. sec. V	0.89	0.49	0.89	0.49	0.89	0.89	0.49
Slewing range	360°						
Radius in m	Lifting capacities in t						
20.0	4.4						
22.0	4.3	4.4	4.3	4.4	4.4		
24.0	4.2	4.3	4.3	4.3	4.3	4.3	4.3
26.0	4.2	4.2	4.2	4.2	4.2	4.2	4.3
28.0	4.1	4.2	4.2	4.2	4.2	4.2	4.2
30.0	4.1	4.0	4.1	3.8	4.1	4.1	3.7
32.0	4.1	3.3	3.9	3.1	3.8	4.0	3.0
34.0	3.9	2.7	3.2	2.5	3.2	3.4	2.4
36.0	3.3	2.1	2.6	1.9	2.7	2.9	1.9
38.0	2.8	1.5	2.1	1.4	2.1	2.3	1.4
40.0	2.3	1.0	1.6	0.9	1.7	1.9	0.9
42.0	1.9		1.1		1.2	1.4	
44.0					0.8	1.1	
RCL code	3504						
Max. permitted	12 m/s	10 m/s					
windspeed	11 m/s	10 m/s					

4 195 514

	Crane with 7.9 t counterweight									
	Outrigger base - length 8,030 m - width 7,600 m									
	Length of swing-away jib 1.8 + 9.4 m									
	Offset of swing-away jib 0 - 15°, (intermediate angle)									
	Main boom - fixed length in m									
	12.81	17.33	21.93	26.60	27.96	29.37	31.86	32.57	34.04	37.08
Tel. sec. I	0.00	0.00	0.00	0.00	0.55	0.00	0.00	0.55	0.00	0.55
Tel. sec. II	0.00	0.00	0.00	0.00	0.55	0.00	0.55	0.55	0.00	0.55
Tel. sec. III	0.00	0.00	0.00	0.49	0.49	0.00	0.49	0.49	0.49	0.49
Tel. sec. IV	0.00	0.00	0.49	0.49	0.00	0.89	0.49	0.49	0.89	0.49
Tel. sec. V	0.00	0.49	0.49	0.49	0.00	0.89	0.49	0.00	0.89	0.49
Slewing range	360°									
Radius in m	Lifting capacities in t									
5.0	16.4									
6.0	15.5	15.6								
7.0	14.7	15.0	15.1							
8.0	13.8	14.4	14.6	14.7	15.2					
9.0	13.0	13.8	14.1	14.2	14.8	13.4	14.2	14.7	13.0	
10.0	12.3	13.1	13.7	13.9	14.4	13.1	13.9	14.3	12.8	13.7
11.0	11.6	12.5	13.2	13.5	14.0	12.4	13.6	14.0	12.6	13.4
12.0	11.1	11.8	12.7	13.1	13.6	11.7	13.3	13.7	12.1	13.2
13.0	10.6	11.1	12.2	12.8	12.8	11.0	13.0	12.5	11.5	12.5
14.0	10.1	10.5	11.6	12.4	11.3	10.3	12.5	11.1	10.9	11.1
15.0	9.7	10.0	11.0	11.9	10.0	9.8	11.3	9.9	10.3	9.9
16.0	9.2	9.5	10.5	11.2	8.9	9.2	10.2	8.8	9.8	8.9
18.0	8.5	8.6	9.6	9.3	7.1	8.1	8.3	7.0	8.9	7.2
20.0	7.6	7.8	7.8	7.6	5.5	7.4	6.9	5.6	7.6	5.8
21.9	6.5									
22.0		6.4	6.4	6.2	4.1	6.6	5.6	4.4	6.4	4.7
24.0		5.3	5.3	5.1	3.1	5.5	4.5	3.3	5.3	3.7
26.0			4.4	4.2	2.2	4.5	3.6	2.5	4.4	2.8
26.4		4.3								
28.0			3.7	3.4	1.5	3.8	2.8	1.7	3.6	2.1
30.0			3.0	2.8	0.8	3.1	2.2	1.1	3.0	1.4
31.0			2.8							
32.0				2.2		2.5	1.6		2.4	0.9
34.0				1.7		2.0	1.2		1.9	
35.7				1.4						
36.0						1.6			1.5	
38.0									1.1	
38.4						1.2				
RCL code	3300									
Max. permitted	14 m/s					12 m/s				
wind speed	14 m/s					13 m/s		12 m/s		

	Crane with 5.6 t counterweight									
	Outrigger base - length 8,030 m - width 7,600 m									
	Length of swing-away jib 1.8 + 9.4 m									
	Offset of swing-away jib 30 - 50°, (intermediate angle)									
	Main boom - fixed length in m									
	12.81	17.33	21.93	26.60	27.96	29.37	31.86	32.57	34.04	37.08
Tel. sec. I	0.00	0.00	0.00	0.00	0.55	0.00	0.00	0.55	0.00	0.55
Tel. sec. II	0.00	0.00	0.00	0.00	0.55	0.00	0.55	0.55	0.00	0.55
Tel. sec. III	0.00	0.00	0.00	0.49	0.49	0.00	0.49	0.49	0.49	0.49
Tel. sec. IV	0.00	0.00	0.49	0.49	0.00	0.89	0.49	0.49	0.89	0.49
Tel. sec. V	0.00	0.49	0.49	0.49	0.00	0.89	0.49	0.00	0.89	0.49
Slewing range	360°									
Radius in m	Lifting capacities in t									
9.0	9.2									
10.0	9.0	9.1								
11.0	8.8	9.0	9.1							
12.0	8.6	8.8	8.9	9.0	9.1					
13.0	8.3	8.7	8.8	8.9	9.0	8.9	9.0	9.1		
14.0	8.2	8.5	8.7	8.8	8.9	8.8	8.9	9.0	8.9	9.0
15.0	8.2	8.3	8.6	8.7	8.8	8.7	8.8	8.9	8.8	8.9
16.0	8.1	8.2	8.3	8.6	8.7	8.6	8.7	8.8	8.7	8.8
18.0		8.1	8.2	8.3	7.5	8.0	8.6	7.5	8.3	7.6
20.0		7.5	7.8	7.6	5.9	7.3	7.0	5.9	7.7	6.1
22.0			6.3	6.2	4.4	6.6	5.8	4.7	6.4	4.9
24.0				5.0	3.3	5.4	4.6	3.6	5.3	3.9
26.0				4.0	2.3	4.4	3.6	2.6	4.4	3.0
28.0					1.4	3.6	2.8	1.8	3.6	2.2
30.0							2.1	1.1	2.9	1.5
32.0									2.3	0.9
RCL code	3200									
Max. permitted	14 m/s						12 m/s			
wind speed	14 m/s						12 m/s			

4 195 544

	Crane with 1 t counterweight					
	Outrigger base - length 8,030 m - width 7,600 m					
	Length of swing-away jib 1.8 + 9.4 m					
	Offset of swing-away jib 0 - 15°, (intermediate angle)					
	Main boom - fixed length in m					
	37.85	40.31	40.76	43.56	44.52	46.36
Tel. sec. I	0.00	0.89	0.55	0.89	0.55	0.00
Tel. sec. II	0.00	0.55	0.55	0.89	0.55	0.89
Tel. sec. III	0.89	0.49	0.49	0.49	0.49	0.89
Tel. sec. IV	0.89	0.49	0.49	0.49	0.89	0.89
Tel. sec. V	0.89	0.49	0.89	0.49	0.89	0.89
Slewing range	360°					
Radius in m	Lifting capacities in t					
10.0	12.3					
11.0	12.1	10.5	11.3	9.9		
12.0	11.5	9.0	9.9	8.5	9.6	9.8
13.0	10.2	7.8	8.6	7.3	8.4	8.6
14.0	9.0	6.8	7.6	6.3	7.4	7.6
15.0	8.1	5.9	6.7	5.5	6.5	6.7
16.0	7.2	5.1	5.8	4.7	5.7	6.0
18.0	5.8	3.7	4.5	3.4	4.4	4.7
20.0	4.7	2.7	3.4	2.4	3.4	3.6
22.0	3.8	1.8	2.5	1.5	2.5	2.8
24.0	3.0	1.0	1.8		1.8	2.0
26.0	2.2		1.1		1.2	1.4
28.0	1.6					0.9
30.0	1.1					
RCL code	3000					
Max. permitted windspeed	12 m/s					10 m/s
windspeed	12 m/s					10 m/s

	Crane with 44.5 t counterweight									
	Outrigger base - length 8,030 m - width 6,700 m									
	Length of swing-away jib 1.8 + 16.0 m									
	Offset of swing-away jib 0°									
	Main boom - fixed length in m									
	12.81	17.33	21.93	26.60	27.96	29.37	31.86	32.57	34.04	37.08
Tel. sec. I	0.00	0.00	0.00	0.00	0.55	0.00	0.00	0.55	0.00	0.55
Tel. sec. II	0.00	0.00	0.00	0.00	0.55	0.00	0.55	0.55	0.00	0.55
Tel. sec. III	0.00	0.00	0.00	0.49	0.49	0.00	0.49	0.49	0.49	0.49
Tel. sec. IV	0.00	0.00	0.49	0.49	0.00	0.89	0.49	0.49	0.89	0.49
Tel. sec. V	0.00	0.49	0.49	0.49	0.00	0.89	0.49	0.00	0.89	0.49
Slewing range	360°									
Radius in m	Lifting capacities in t									
38.0				4.3	4.5	3.3	4.7	4.8	3.7	5.1
40.0				4.2	4.3	3.1	4.5	4.6	3.5	4.9
42.0				4.1	4.2	2.9	4.4	4.5	3.3	4.7
42.6				2.4						
43.9					0.9					
44.0						2.7	4.3	4.0	3.1	4.2
45.3						2.2				
46.0							4.1	3.6	2.9	3.7
47.8							1.2			
48.0								3.2	2.8	3.3
50.0									1.5	3.0
52.0										2.6
RCL code	4354									
Max. permitted	14 m/s			12 m/s						
windspeed	14 m/s			12 m/s	10 m/s	12 m/s	10 m/s	9 m/s	10 m/s	9 m/s

4 196 400

	Crane with 30.9 t counterweight				
	Outrigger base - length 8,030 m - width 6,700 m				
	Length of swing-away jib 1.8 + 16.0 m				
	Offset of swing-away jib 0°				
	Main boom - fixed length in m				
	51.13	51.58	54.81	57.90	60.00
Tel. sec. I	0.89	0.55	0.89	0.89	1.00
Tel. sec. II	0.89	0.89	0.89	0.89	1.00
Tel. sec. III	0.89	0.89	0.89	1.00	1.00
Tel. sec. IV	0.89	0.89	0.89	1.00	1.00
Tel. sec. V	0.49	0.89	0.89	1.00	1.00
Slewing range	360°				
Radius in m	Lifting capacities in t				
11.0	6.2	5.9			
12.0	6.1	5.9	5.5		
13.0	6.1	5.9	5.5	4.8	4.6
14.0	6.1	5.8	5.5	4.8	4.6
15.0	6.0	5.8	5.5	4.8	4.6
16.0	6.0	5.8	5.5	4.8	4.6
18.0	5.9	5.7	5.5	4.8	4.6
20.0	5.9	5.7	5.4	4.8	4.6
22.0	5.8	5.6	5.4	4.8	4.6
24.0	5.7	5.5	5.3	4.8	4.6
26.0	5.7	5.5	5.3	4.8	4.6
28.0	5.6	5.4	5.2	4.8	4.6
30.0	5.4	5.4	5.2	4.8	4.6
32.0	4.7	5.2	4.8	4.7	4.5
34.0	4.1	4.6	4.1	4.1	3.9
36.0	3.5	4.0	3.6	3.6	3.4
38.0	3.0	3.5	3.1	3.1	2.9
40.0	2.6	3.1	2.7	2.6	2.5
42.0	2.1	2.6	2.3	2.2	2.1
44.0	1.7	2.2	1.8	1.9	1.7
46.0	1.3	1.8	1.5	1.5	1.3
48.0	1.0	1.4	1.1	1.1	1.0
50.0		1.1	0.8	0.8	
52.0		0.8			
RCL code	4254				
Max. permitted	10 m/s				
windspeed	9 m/s	8 m/s			

4 196 414

	Crane with 26.3 t counterweight										
	Outrigger base - length 8,030 m - width 6,700 m										
	Length of swing-away jib 1.8 + 16.0 m										
	Offset of swing-away jib 0 - 15°, (intermediate angle)										
	Main boom - fixed length in m										
	12.81	17.33	21.93	26.60	27.96	29.37	31.86	32.57	34.04	37.08	
Tel. sec. I	0.00	0.00	0.00	0.00	0.55	0.00	0.00	0.55	0.00	0.55	
Tel. sec. II	0.00	0.00	0.00	0.00	0.55	0.00	0.55	0.55	0.00	0.55	
Tel. sec. III	0.00	0.00	0.00	0.49	0.49	0.00	0.49	0.49	0.49	0.49	
Tel. sec. IV	0.00	0.00	0.49	0.49	0.00	0.89	0.49	0.49	0.89	0.49	
Tel. sec. V	0.00	0.49	0.49	0.49	0.00	0.89	0.49	0.00	0.89	0.49	
Slewing range	360°										
Radius in m	Lifting capacities in t										
43.9					0.9						
44.0						2.7	2.3	1.4	2.9	1.6	
45.3						2.2					
46.0							1.9	1.0	2.5	1.2	
47.8							1.2				
48.0									2.2	0.9	
50.0									1.5		
RCL code	4154										
Max. permitted	14 m/s				12 m/s						
windspeed	14 m/s				12 m/s			11 m/s		10 m/s	

4 196 424

	Crane with 24 t counterweight				
	Outrigger base - length 8,030 m - width 6,700 m				
	Length of swing-away jib 1.8 + 16.0 m				
	Offset of swing-away jib 0 - 15°, (intermediate angle)				
	Main boom - fixed length in m				
	51.13	51.58	54.81	57.90	60.00
Tel. sec. I	0.89	0.55	0.89	0.89	1.00
Tel. sec. II	0.89	0.89	0.89	0.89	1.00
Tel. sec. III	0.89	0.89	0.89	1.00	1.00
Tel. sec. IV	0.89	0.89	0.89	1.00	1.00
Tel. sec. V	0.49	0.89	0.89	1.00	1.00
Slewing range	360°				
Radius in m	Lifting capacities in t				
16.0	5.6	5.5			
18.0	5.6	5.4	5.2	4.8	4.6
20.0	5.5	5.3	5.2	4.8	4.6
22.0	5.4	5.3	5.1	4.8	4.6
24.0	5.4	5.2	5.1	4.8	4.6
26.0	5.3	5.2	5.0	4.8	4.6
28.0	4.6	5.1	4.7	4.6	4.4
30.0	3.9	4.4	4.0	3.9	3.7
32.0	3.3	3.8	3.4	3.3	3.1
34.0	2.8	3.3	2.8	2.8	2.6
36.0	2.3	2.8	2.4	2.3	2.2
38.0	1.8	2.3	1.9	1.9	1.7
40.0	1.4	1.9	1.5	1.5	1.3
42.0	1.0	1.5	1.2	1.2	1.0
44.0		1.1	0.8	0.8	
46.0		0.8			
RCL code	4054				
Max. permitted	10 m/s				
windspeed	10 m/s	9 m/s			

	Crane with 21.7 t counterweight						
	Outrigger base - length 8,030 m - width 6,700 m						
	Length of swing-away jib 1.8 + 16.0 m						
	Offset of swing-away jib 15 - 30°, (intermediate angle)						
	Main boom - fixed length in m						
	37.85	40.31	40.76	43.56	44.52	46.36	47.37
Tel. sec. I	0.00	0.89	0.55	0.89	0.55	0.00	0.89
Tel. sec. II	0.00	0.55	0.55	0.89	0.55	0.89	0.89
Tel. sec. III	0.89	0.49	0.49	0.49	0.49	0.89	0.89
Tel. sec. IV	0.89	0.49	0.49	0.49	0.89	0.89	0.49
Tel. sec. V	0.89	0.49	0.89	0.49	0.89	0.89	0.49
Slewing range	360°						
Radius in m	Lifting capacities in t						
18.0	5.3	5.4	5.4	5.4			
20.0	5.2	5.3	5.2	5.3	5.2	5.1	5.2
22.0	5.0	5.1	5.1	5.2	5.1	5.0	5.1
24.0	4.9	5.0	4.9	5.0	5.0	4.9	5.0
26.0	4.7	4.8	4.8	4.9	4.8	4.8	4.9
28.0	4.6	4.7	4.7	4.7	4.7	4.7	4.8
30.0	4.5	4.5	4.6	4.2	4.6	4.6	4.1
32.0	4.4	3.8	4.4	3.6	4.3	4.5	3.5
34.0	4.3	3.2	3.8	3.0	3.7	3.9	2.9
36.0	4.0	2.6	3.2	2.5	3.2	3.4	2.4
38.0	3.5	2.1	2.6	1.9	2.7	2.9	1.9
40.0	3.0	1.6	2.2	1.5	2.2	2.4	1.4
42.0	2.5	1.2	1.7	1.0	1.8	2.0	1.0
44.0	2.2		1.3		1.4	1.6	
46.0	1.8		1.0		1.0	1.2	
48.0	1.5					0.9	
50.0	1.2						
RCL code	3954						
Max. permitted windspeed	12 m/s	10 m/s					
	10 m/s						

	Crane with 19.4 t counterweight						
	Outrigger base - length 8,030 m - width 6,700 m						
	Length of swing-away jib 1.8 + 16.0 m						
	Offset of swing-away jib 30 - 50°, (intermediate angle)						
	Main boom - fixed length in m						
	37.85	40.31	40.76	43.56	44.52	46.36	47.37
Tel. sec. I	0.00	0.89	0.55	0.89	0.55	0.00	0.89
Tel. sec. II	0.00	0.55	0.55	0.89	0.55	0.89	0.89
Tel. sec. III	0.89	0.49	0.49	0.49	0.49	0.89	0.89
Tel. sec. IV	0.89	0.49	0.49	0.49	0.89	0.89	0.49
Tel. sec. V	0.89	0.49	0.89	0.49	0.89	0.89	0.49
Slewing range	360°						
Radius in m	Lifting capacities in t						
20.0	4.4						
22.0	4.3	4.4	4.3	4.4	4.4		
24.0	4.2	4.3	4.3	4.3	4.3	4.3	4.3
26.0	4.2	4.2	4.2	4.2	4.2	4.2	4.3
28.0	4.1	4.2	4.2	4.2	4.2	4.2	4.2
30.0	4.1	4.1	4.1	4.1	4.1	4.1	4.2
32.0	4.1	3.8	4.1	3.6	4.1	4.1	3.5
34.0	4.0	3.2	3.7	3.0	3.7	3.9	2.9
36.0	3.8	2.6	3.1	2.5	3.2	3.3	2.4
38.0	3.3	2.0	2.6	1.9	2.6	2.8	1.9
40.0	2.8	1.5	2.1	1.4	2.1	2.3	1.4
42.0	2.4	1.1	1.6	1.0	1.7	1.9	1.0
44.0			1.2		1.3	1.5	
46.0					0.9	1.1	
48.0						0.8	
RCL code	3854						
Max. permitted	12 m/s	10 m/s					
windspeed	11 m/s	10 m/s					

4 196 334

	Crane with 12.5 t counterweight				
	Outrigger base - length 8,030 m - width 6,700 m				
	Length of swing-away jib 1.8 + 9.4 m				
	Offset of swing-away jib 0 - 15°, (intermediate angle)				
	Main boom - fixed length in m				
	51.13	51.58	54.81	57.90	60.00
Tel. sec. I	0.89	0.55	0.89	0.89	1.00
Tel. sec. II	0.89	0.89	0.89	0.89	1.00
Tel. sec. III	0.89	0.89	0.89	1.00	1.00
Tel. sec. IV	0.89	0.89	0.89	1.00	1.00
Tel. sec. V	0.49	0.89	0.89	1.00	1.00
Slewing range	360°				
Radius in m	Lifting capacities in t				
13.0	10.5	9.6			
14.0	9.4	9.6	8.8		
15.0	8.4	9.0	8.4	7.2	6.7
16.0	7.5	8.1	7.5	7.2	6.7
18.0	6.0	6.6	6.1	6.0	5.7
20.0	4.8	5.4	4.9	4.8	4.6
22.0	3.8	4.4	3.9	3.9	3.6
24.0	3.0	3.5	3.1	3.1	2.8
26.0	2.2	2.8	2.4	2.4	2.1
28.0	1.6	2.2	1.7	1.7	1.5
30.0	1.1	1.6	1.2	1.2	1.0
32.0		1.2			
RCL code	3550				
Max. permitted	10 m/s				
windspeed	10 m/s				

4 196 484

	Crane with 10.2 t counterweight						
	Outrigger base - length 8,030 m - width 6,700 m						
	Length of swing-away jib 1.8 + 16.0 m						
	Offset of swing-away jib 0 - 15°, (intermediate angle)						
	Main boom - fixed length in m						
	37.85	40.31	40.76	43.56	44.52	46.36	47.37
Tel. sec. I	0.00	0.89	0.55	0.89	0.55	0.00	0.89
Tel. sec. II	0.00	0.55	0.55	0.89	0.55	0.89	0.89
Tel. sec. III	0.89	0.49	0.49	0.49	0.49	0.89	0.89
Tel. sec. IV	0.89	0.49	0.49	0.49	0.89	0.89	0.49
Tel. sec. V	0.89	0.49	0.89	0.49	0.89	0.89	0.49
Slewing range	360°						
Radius in m	Lifting capacities in t						
13.0	6.2						
14.0	6.1	6.4	6.3	6.3	6.0		
15.0	6.0	6.3	6.2	6.2	6.0	5.8	6.0
16.0	6.0	6.3	6.1	6.2	5.9	5.7	5.9
18.0	5.8	6.1	6.0	5.8	5.8	5.6	5.6
20.0	5.7	5.0	5.6	4.7	5.5	5.5	4.5
22.0	5.5	4.0	4.6	3.7	4.6	4.7	3.5
24.0	4.9	3.2	3.8	2.9	3.7	3.9	2.7
26.0	4.1	2.5	3.1	2.2	3.0	3.2	2.1
28.0	3.5	1.9	2.5	1.6	2.4	2.6	1.5
30.0	2.9	1.3	2.0	1.1	1.9	2.1	1.0
32.0	2.4	0.8	1.4		1.5	1.6	
34.0	1.9		1.0		1.0	1.2	
36.0	1.5					0.8	
38.0	1.1						
RCL code	3454						
Max. permitted windspeed	12 m/s	10 m/s					
windspeed	12 m/s	10 m/s					

4 196 500

	Crane with 5.6 t counterweight		
	Outrigger base - length 8,030 m - width 6,700 m		
	Length of swing-away jib 1.8 + 16.0 m		
	Offset of swing-away jib 0°		
	Main boom - fixed length in m		
	37.85	40.31	40.76
Tel. sec. I	0.00	0.89	0.55
Tel. sec. II	0.00	0.55	0.55
Tel. sec. III	0.89	0.49	0.49
Tel. sec. IV	0.89	0.49	0.49
Tel. sec. V	0.89	0.49	0.89
Slewing range	360°		
Radius in m	Lifting capacities in t		
9.0	6.9	7.5	7.2
10.0	6.8	7.4	7.1
11.0	6.8	7.3	7.1
12.0	6.7	7.3	7.0
13.0	6.7	7.2	6.9
14.0	6.6	7.1	6.9
15.0	6.5	6.6	6.8
16.0	6.5	5.8	6.5
18.0	6.4	4.5	5.2
20.0	5.3	3.5	4.1
22.0	4.4	2.7	3.3
24.0	3.6	1.9	2.6
26.0	3.0	1.3	1.9
28.0	2.4	0.8	1.4
30.0	1.8		0.9
32.0	1.4		
34.0	0.9		
RCL code	3254		
Max. permitted	12 m/s	10 m/s	
wind speed	12 m/s	10 m/s	

4 196 386

	Crane with 1 t counterweight		
	Outrigger base - length 8,030 m - width 6,700 m		
	Length of swing-away jib 1.8 + 9.4 m		
	Offset of swing-away jib 30 - 50°, (intermediate angle)		
	Main boom - fixed length in m		
	37.85	40.31	40.76
Tel. sec. I	0.00	0.89	0.55
Tel. sec. II	0.00	0.55	0.55
Tel. sec. III	0.89	0.49	0.49
Tel. sec. IV	0.89	0.49	0.49
Tel. sec. V	0.89	0.49	0.89
Slewing range	360°		
Radius in m	Lifting capacities in t		
14.0	8.6		
15.0	7.7	5.9	6.6
16.0	6.9	5.1	5.8
18.0	5.5	3.8	4.4
20.0	4.4	2.7	3.3
22.0	3.5	1.8	2.4
24.0	2.7	1.1	1.7
26.0	2.0		1.1
28.0	1.3		
30.0	0.8		
RCL code	3050		
Max. permitted	12 m/s		
windspeed	12 m/s		

4 197 455	1.8 + 24.0 m / 15 - 30° (intermediate angle)	8,030 x 5,900 m 360°	12.5 t 4 - 394
4 197 456	1.8 + 24.0 m / 30 - 50° (intermediate angle)	8,030 x 5,900 m 360°	12.5 t 4 - 396
4 197 460	1.8 + 24.0 m / 0° offset	8,030 x 5,900 m 360°	10.2 t 4 - 398
4 197 464	1.8 + 24.0 m / 0 - 15° (intermediate angle)	8,030 x 5,900 m 360°	10.2 t 4 - 400
4 197 465	1.8 + 24.0 m / 15 - 30° (intermediate angle)	8,030 x 5,900 m 360°	10.2 t 4 - 402
4 197 466	1.8 + 24.0 m / 30 - 50° (intermediate angle)	8,030 x 5,900 m 360°	10.2 t 4 - 404
4 197 470	1.8 + 24.0 m / 0° offset	8,030 x 5,900 m 360°	7.9 t 4 - 406
4 197 474	1.8 + 24.0 m / 0 - 15° (intermediate angle)	8,030 x 5,900 m 360°	7.9 t 4 - 407
4 197 475	1.8 + 24.0 m / 15 - 30° (intermediate angle)	8,030 x 5,900 m 360°	7.9 t 4 - 408
4 197 476	1.8 + 24.0 m / 30 - 50° (intermediate angle)	8,030 x 5,900 m 360°	7.9 t 4 - 409
4 197 480	1.8 + 24.0 m / 0° offset	8,030 x 5,900 m 360°	5.6 t 4 - 410
4 197 484	1.8 + 24.0 m / 0 - 15° (intermediate angle)	8,030 x 5,900 m 360°	5.6 t 4 - 411
4 197 485	1.8 + 24.0 m / 15 - 30° (intermediate angle)	8,030 x 5,900 m 360°	5.6 t 4 - 412
4 197 486	1.8 + 24.0 m / 30 - 50° (intermediate angle)	8,030 x 5,900 m 360°	5.6 t 4 - 413
4 198 210	1.8 + 24.0 m / 0° offset	8,030 x 5,100 m 360°	44.5 t 4 - 416
4 198 214	1.8 + 24.0 m / 0 - 15° (intermediate angle)	8,030 x 5,100 m 360°	44.5 t 4 - 420
4 198 215	1.8 + 24.0 m / 15 - 30° (intermediate angle)	8,030 x 5,100 m 360°	44.5 t 4 - 423
4 198 216	1.8 + 24.0 m / 30 - 50° (intermediate angle)	8,030 x 5,100 m 360°	44.5 t 4 - 426
4 198 220	1.8 + 24.0 m / 0° offset	8,030 x 5,100 m 360°	30.9 t 4 - 430
4 198 224	1.8 + 24.0 m / 0 - 15° (intermediate angle)	8,030 x 5,100 m 360°	30.9 t 4 - 434
4 198 225	1.8 + 24.0 m / 15 - 30° (intermediate angle)	8,030 x 5,100 m 360°	30.9 t 4 - 437
4 198 226	1.8 + 24.0 m / 30 - 50° (intermediate angle)	8,030 x 5,100 m 360°	30.9 t 4 - 440
4 198 230	1.8 + 24.0 m / 0° offset	8,030 x 5,100 m 360°	26.3 t 4 - 444
4 198 234	1.8 + 24.0 m / 0 - 15° (intermediate angle)	8,030 x 5,100 m 360°	26.3 t 4 - 447
4 198 235	1.8 + 24.0 m / 15 - 30° (intermediate angle)	8,030 x 5,100 m 360°	26.3 t 4 - 449
4 198 236	1.8 + 24.0 m / 30 - 50° (intermediate angle)	8,030 x 5,100 m 360°	26.3 t 4 - 451
4 198 240	1.8 + 24.0 m / 0° offset	8,030 x 5,100 m 360°	24 t 4 - 454
4 198 244	1.8 + 24.0 m / 0 - 15° (intermediate angle)	8,030 x 5,100 m 360°	24 t 4 - 456
4 198 245	1.8 + 24.0 m / 15 - 30° (intermediate angle)	8,030 x 5,100 m 360°	24 t 4 - 458
4 198 246	1.8 + 24.0 m / 30 - 50° (intermediate angle)	8,030 x 5,100 m 360°	24 t 4 - 460
4 198 250	1.8 + 24.0 m / 0° offset	8,030 x 5,100 m 360°	21.7 t 4 - 462
4 198 254	1.8 + 24.0 m / 0 - 15° (intermediate angle)	8,030 x 5,100 m 360°	21.7 t 4 - 464
4 198 255	1.8 + 24.0 m / 15 - 30° (intermediate angle)	8,030 x 5,100 m 360°	21.7 t 4 - 466
4 198 256	1.8 + 24.0 m / 30 - 50° (intermediate angle)	8,030 x 5,100 m 360°	21.7 t 4 - 468
4 198 260	1.8 + 24.0 m / 0° offset	8,030 x 5,100 m 360°	19.4 t 4 - 470
4 198 264	1.8 + 24.0 m / 0 - 15° (intermediate angle)	8,030 x 5,100 m 360°	19.4 t 4 - 472
4 198 265	1.8 + 24.0 m / 15 - 30° (intermediate angle)	8,030 x 5,100 m 360°	19.4 t 4 - 474
4 198 266	1.8 + 24.0 m / 30 - 50° (intermediate angle)	8,030 x 5,100 m 360°	19.4 t 4 - 476
4 198 270	1.8 + 24.0 m / 0° offset	8,030 x 5,100 m 360°	17.1 t 4 - 478
4 198 274	1.8 + 24.0 m / 0 - 15° (intermediate angle)	8,030 x 5,100 m 360°	17.1 t 4 - 480
4 198 275	1.8 + 24.0 m / 15 - 30° (intermediate angle)	8,030 x 5,100 m 360°	17.1 t 4 - 482
4 198 276	1.8 + 24.0 m / 30 - 50° (intermediate angle)	8,030 x 5,100 m 360°	17.1 t 4 - 484
4 198 280	1.8 + 24.0 m / 0° offset	8,030 x 5,100 m 360°	14.8 t 4 - 486
4 198 284	1.8 + 24.0 m / 0 - 15° (intermediate angle)	8,030 x 5,100 m 360°	14.8 t 4 - 487
4 198 285	1.8 + 24.0 m / 15 - 30° (intermediate angle)	8,030 x 5,100 m 360°	14.8 t 4 - 488
4 198 286	1.8 + 24.0 m / 30 - 50° (intermediate angle)	8,030 x 5,100 m 360°	14.8 t 4 - 489
4 198 290	1.8 + 24.0 m / 0° offset	8,030 x 5,100 m 360°	12.5 t 4 - 490
4 198 294	1.8 + 24.0 m / 0 - 15° (intermediate angle)	8,030 x 5,100 m 360°	12.5 t 4 - 491
4 198 295	1.8 + 24.0 m / 15 - 30° (intermediate angle)	8,030 x 5,100 m 360°	12.5 t 4 - 492
4 198 296	1.8 + 24.0 m / 30 - 50° (intermediate angle)	8,030 x 5,100 m 360°	12.5 t 4 - 493

	Crane with 44.5 t counterweight				
	Outrigger base - length 8,030 m - width 5,900 m				
	Length of swing-away jib 1.8 + 16.0 m				
	Offset of swing-away jib 30 - 50°, (intermediate angle)				
	Main boom - fixed length in m				
	51.13	51.58	54.81	57.90	60.00
Tel. sec. I	0.89	0.55	0.89	0.89	1.00
Tel. sec. II	0.89	0.89	0.89	0.89	1.00
Tel. sec. III	0.89	0.89	0.89	1.00	1.00
Tel. sec. IV	0.89	0.89	0.89	1.00	1.00
Tel. sec. V	0.49	0.89	0.89	1.00	1.00
Slewing range	360°				
Radius in m	Lifting capacities in t				
24.0	4.3	4.3			
26.0	4.3	4.2	4.2	4.2	4.2
28.0	4.2	4.2	4.2	4.2	4.2
30.0	4.2	4.1	4.1	4.1	4.1
32.0	4.1	4.1	4.1	4.1	4.1
34.0	4.1	4.1	4.1	4.1	4.1
36.0	4.1	4.0	4.1	4.0	4.0
38.0	4.0	4.0	4.0	4.0	4.0
40.0	4.0	4.0	4.0	3.9	3.9
42.0	4.0	4.0	4.0	3.7	3.7
44.0	3.5	3.9	3.7	3.4	3.5
46.0	3.1	3.5	3.2	3.2	3.1
48.0	2.6	3.0	2.8	2.8	2.7
50.0	2.2	2.6	2.4	2.5	2.4
52.0	1.9	2.3	2.0	2.1	2.0
54.0			1.7	1.8	1.7
56.0				1.5	1.4
58.0					1.1
RCL code	6304				
Max. permitted	10 m/s				
windspeed	8 m/s				

4 197 110

	Crane with 26.3 t counterweight									
	Outrigger base - length 8,030 m - width 5,900 m									
	Length of swing-away jib 1.8 + 9.4 m									
	Offset of swing-away jib 0°									
	Main boom - fixed length in m									
	12.81	17.33	21.93	26.60	27.96	29.37	31.86	32.57	34.04	37.08
Tel. sec. I	0.00	0.00	0.00	0.00	0.55	0.00	0.00	0.55	0.00	0.55
Tel. sec. II	0.00	0.00	0.00	0.00	0.55	0.00	0.55	0.55	0.00	0.55
Tel. sec. III	0.00	0.00	0.00	0.49	0.49	0.00	0.49	0.49	0.49	0.49
Tel. sec. IV	0.00	0.00	0.49	0.49	0.00	0.89	0.49	0.49	0.89	0.49
Tel. sec. V	0.00	0.49	0.49	0.49	0.00	0.89	0.49	0.00	0.89	0.49
Slewing range	360°									
Radius in m	Lifting capacities in t									
35.7				3.3						
36.0					1.5	3.5	2.7	1.7	3.4	2.0
37.0					1.3					
38.0						3.1	2.2	1.2	2.9	1.5
38.4						3.0				
40.0							1.8	0.8	2.5	1.1
40.9							1.7			
42.0									2.2	
43.1									2.0	
RCL code	6100									
Max. permitted	14 m/s					12 m/s				
windspeed	14 m/s			13 m/s		12 m/s			11 m/s	

	Crane with 24 t counterweight				
	Outrigger base - length 8,030 m - width 5,900 m				
	Length of swing-away jib 1.8 + 9.4 m				
	Offset of swing-away jib 0°				
	Main boom - fixed length in m				
	51.13	51.58	54.81	57.90	60.00
Tel. sec. I	0.89	0.55	0.89	0.89	1.00
Tel. sec. II	0.89	0.89	0.89	0.89	1.00
Tel. sec. III	0.89	0.89	0.89	1.00	1.00
Tel. sec. IV	0.89	0.89	0.89	1.00	1.00
Tel. sec. V	0.49	0.89	0.89	1.00	1.00
Slewing range	360°				
Radius in m	Lifting capacities in t				
10.0	10.6	9.6	8.8		
11.0	10.6	9.6	8.8	7.2	
12.0	10.6	9.6	8.8	7.2	6.7
13.0	10.6	9.6	8.8	7.2	6.7
14.0	10.6	9.6	8.8	7.2	6.7
15.0	10.6	9.6	8.8	7.2	6.7
16.0	10.0	9.6	8.8	7.2	6.7
18.0	8.3	8.9	8.3	7.2	6.7
20.0	6.9	7.5	6.9	6.9	6.6
22.0	5.7	6.3	5.8	5.8	5.5
24.0	4.8	5.3	4.8	4.8	4.6
26.0	3.9	4.5	4.0	4.0	3.8
28.0	3.2	3.8	3.3	3.3	3.1
30.0	2.6	3.1	2.7	2.7	2.5
32.0	2.0	2.6	2.1	2.1	1.9
34.0	1.5	2.1	1.7	1.7	1.5
36.0	1.1	1.6	1.2	1.2	1.0
38.0		1.2	0.8	0.8	
RCL code	6000				
Max. permitted	10 m/s				
windspeed	10 m/s				

	Crane with 21.7 t counterweight						
	Outrigger base - length 8,030 m - width 5,900 m						
	Length of swing-away jib 1.8 + 9.4 m						
	Offset of swing-away jib 0 - 15°, (intermediate angle)						
	Main boom - fixed length in m						
	37.85	40.31	40.76	43.56	44.52	46.36	47.37
Tel. sec. I	0.00	0.89	0.55	0.89	0.55	0.00	0.89
Tel. sec. II	0.00	0.55	0.55	0.89	0.55	0.89	0.89
Tel. sec. III	0.89	0.49	0.49	0.49	0.49	0.89	0.89
Tel. sec. IV	0.89	0.49	0.49	0.49	0.89	0.89	0.49
Tel. sec. V	0.89	0.49	0.89	0.49	0.89	0.89	0.49
Slewing range	360°						
Radius in m	Lifting capacities in t						
10.0	12.3						
11.0	12.1	13.1	12.6	12.6			
12.0	11.9	12.9	12.5	12.5	11.7	10.6	11.6
13.0	11.6	12.7	12.3	12.3	11.5	10.6	11.6
14.0	11.1	12.3	11.9	11.8	11.4	10.6	11.4
15.0	10.6	11.1	11.4	10.6	11.1	10.6	10.3
16.0	10.1	10.0	10.7	9.6	10.6	10.4	9.3
18.0	9.2	8.2	9.0	7.9	8.8	9.0	7.6
20.0	8.3	6.8	7.5	6.5	7.4	7.6	6.3
22.0	7.5	5.6	6.3	5.3	6.2	6.5	5.1
24.0	6.5	4.6	5.3	4.3	5.3	5.5	4.2
26.0	5.6	3.8	4.5	3.5	4.4	4.6	3.4
28.0	4.8	3.1	3.7	2.8	3.7	3.9	2.7
30.0	4.1	2.4	3.1	2.2	3.1	3.3	2.1
32.0	3.4	1.7	2.4	1.6	2.5	2.8	1.5
34.0	2.9	1.2	1.9	1.0	2.0	2.2	1.0
36.0	2.4		1.4		1.5	1.7	
38.0	1.9		1.0		1.0	1.3	
40.0	1.6					0.9	
42.0	1.2						
44.0	0.9						
RCL code	5900						
Max. permitted	12 m/s					10 m/s	
windspeed	11 m/s	12 m/s	11 m/s	12 m/s	11 m/s	10 m/s	

	Crane with 19.4 t counterweight						
	Outrigger base - length 8,030 m - width 5,900 m						
	Length of swing-away jib 1.8 + 9.4 m						
	Offset of swing-away jib 15 - 30°, (intermediate angle)						
	Main boom - fixed length in m						
	37.85	40.31	40.76	43.56	44.52	46.36	47.37
Tel. sec. I	0.00	0.89	0.55	0.89	0.55	0.00	0.89
Tel. sec. II	0.00	0.55	0.55	0.89	0.55	0.89	0.89
Tel. sec. III	0.89	0.49	0.49	0.49	0.49	0.89	0.89
Tel. sec. IV	0.89	0.49	0.49	0.49	0.89	0.89	0.49
Tel. sec. V	0.89	0.49	0.89	0.49	0.89	0.89	0.49
Slewing range	360°						
Radius in m	Lifting capacities in t						
12.0	10.8						
13.0	10.6	11.1	10.9	10.9			
14.0	10.4	10.9	10.8	10.8	10.4	9.9	10.3
15.0	10.1	10.7	10.5	10.6	10.3	9.9	10.3
16.0	9.7	9.9	10.1	9.5	10.0	9.8	9.3
18.0	9.0	8.2	8.8	7.8	8.7	8.9	7.6
20.0	8.1	6.7	7.4	6.4	7.3	7.5	6.2
22.0	7.3	5.5	6.2	5.2	6.1	6.3	5.1
24.0	6.2	4.5	5.2	4.2	5.1	5.3	4.1
26.0	5.4	3.7	4.3	3.4	4.3	4.5	3.3
28.0	4.6	2.9	3.6	2.7	3.6	3.8	2.6
30.0	3.9	2.3	2.9	2.1	2.9	3.1	2.0
32.0	3.2	1.6	2.3	1.5	2.4	2.6	1.4
34.0	2.6	1.0	1.7	0.9	1.8	2.1	0.9
36.0	2.1		1.2		1.3	1.6	
38.0	1.7				0.9	1.1	
40.0	1.3						
42.0	1.0						
RCL code	5800						
Max. permitted	12 m/s					10 m/s	
wind speed	11 m/s	12 m/s			11 m/s	10 m/s	

	Crane with 17.1 t counterweight						
	Outrigger base - length 8,030 m - width 5,900 m						
	Length of swing-away jib 1.8 + 16.0 m						
	Offset of swing-away jib 0°						
	Main boom - fixed length in m						
	37.85	40.31	40.76	43.56	44.52	46.36	47.37
Tel. sec. I	0.00	0.89	0.55	0.89	0.55	0.00	0.89
Tel. sec. II	0.00	0.55	0.55	0.89	0.55	0.89	0.89
Tel. sec. III	0.89	0.49	0.49	0.49	0.49	0.89	0.89
Tel. sec. IV	0.89	0.49	0.49	0.49	0.89	0.89	0.49
Tel. sec. V	0.89	0.49	0.89	0.49	0.89	0.89	0.49
Slewing range	360°						
Radius in m	Lifting capacities in t						
9.0	6.9	7.5	7.2	7.2			
10.0	6.8	7.4	7.1	7.2	6.7	6.3	6.7
11.0	6.8	7.3	7.1	7.1	6.7	6.3	6.7
12.0	6.7	7.3	7.0	7.1	6.6	6.3	6.6
13.0	6.7	7.2	6.9	7.0	6.6	6.2	6.6
14.0	6.6	7.1	6.9	6.9	6.5	6.2	6.5
15.0	6.5	7.0	6.8	6.9	6.5	6.2	6.5
16.0	6.5	7.0	6.7	6.8	6.4	6.1	6.4
18.0	6.4	6.8	6.6	6.7	6.3	6.0	6.3
20.0	6.2	5.8	6.5	5.5	6.2	6.0	5.3
22.0	6.1	4.8	5.4	4.5	5.3	5.5	4.3
24.0	5.6	3.9	4.5	3.6	4.5	4.6	3.5
26.0	4.8	3.2	3.8	2.9	3.7	3.9	2.8
28.0	4.2	2.5	3.1	2.3	3.1	3.3	2.1
30.0	3.6	2.0	2.6	1.7	2.5	2.7	1.6
32.0	3.0	1.5	2.1	1.2	2.0	2.2	1.1
34.0	2.5	1.0	1.6	0.8	1.6	1.8	
36.0	2.0		1.1		1.2	1.4	
38.0	1.6					1.0	
40.0	1.3						
42.0	1.0						
RCL code	5704						
Max. permitted	12 m/s	10 m/s					
windspeed	11 m/s	10 m/s					

	Crane with 14.8 t counterweight						
	Outrigger base - length 8,030 m - width 5,900 m						
	Length of swing-away jib 1.8 + 16.0 m						
	Offset of swing-away jib 15 - 30°, (intermediate angle)						
	Main boom - fixed length in m						
	37.85	40.31	40.76	43.56	44.52	46.36	47.37
Tel. sec. I	0.00	0.89	0.55	0.89	0.55	0.00	0.89
Tel. sec. II	0.00	0.55	0.55	0.89	0.55	0.89	0.89
Tel. sec. III	0.89	0.49	0.49	0.49	0.49	0.89	0.89
Tel. sec. IV	0.89	0.49	0.49	0.49	0.89	0.89	0.49
Tel. sec. V	0.89	0.49	0.89	0.49	0.89	0.89	0.49
Slewing range	360°						
Radius in m	Lifting capacities in t						
18.0	5.3	5.4	5.4	5.4			
20.0	5.2	5.3	5.2	5.3	5.2	5.1	5.2
22.0	5.0	5.1	5.1	4.8	5.1	5.0	4.6
24.0	4.9	4.2	4.7	3.9	4.6	4.8	3.8
26.0	4.7	3.4	3.9	3.1	3.9	4.0	3.0
28.0	4.2	2.7	3.2	2.5	3.2	3.4	2.3
30.0	3.6	2.1	2.7	1.9	2.6	2.8	1.8
32.0	3.0	1.6	2.1	1.4	2.1	2.3	1.3
34.0	2.5	1.1	1.6	0.9	1.7	1.8	0.8
36.0	2.0		1.2		1.2	1.4	
38.0	1.6				0.8	1.0	
40.0	1.2						
42.0	0.9						
RCL code	5604						
Max. permitted	12 m/s	10 m/s					
windspeed	12 m/s	10 m/s					

	Crane with 10.2 t counterweight						
	Outrigger base - length 8,030 m - width 5,900 m						
	Length of swing-away jib 1.8 + 9.4 m						
	Offset of swing-away jib 15 - 30°, (intermediate angle)						
	Main boom - fixed length in m						
	37.85	40.31	40.76	43.56	44.52	46.36	47.37
Tel. sec. I	0.00	0.89	0.55	0.89	0.55	0.00	0.89
Tel. sec. II	0.00	0.55	0.55	0.89	0.55	0.89	0.89
Tel. sec. III	0.89	0.49	0.49	0.49	0.49	0.89	0.89
Tel. sec. IV	0.89	0.49	0.49	0.49	0.89	0.89	0.49
Tel. sec. V	0.89	0.49	0.89	0.49	0.89	0.89	0.49
Slewing range	360°						
Radius in m	Lifting capacities in t						
12.0	10.8						
13.0	10.6	9.4	10.1	9.0			
14.0	10.3	8.3	9.0	7.9	8.8	9.0	7.7
15.0	9.3	7.4	8.0	7.0	7.9	8.1	6.8
16.0	8.4	6.5	7.2	6.2	7.1	7.2	6.0
18.0	6.9	5.1	5.7	4.8	5.7	5.9	4.6
20.0	5.7	3.9	4.6	3.6	4.5	4.7	3.5
22.0	4.7	3.0	3.6	2.7	3.6	3.8	2.6
24.0	3.9	2.2	2.8	1.9	2.8	3.0	1.8
26.0	3.2	1.5	2.1	1.3	2.1	2.4	1.2
28.0	2.5	0.8	1.5		1.6	1.8	
30.0	1.9		0.9		1.0	1.3	
32.0	1.3						
34.0	0.9						
RCL code	5400						
Max. permitted windspeed	12 m/s					10 m/s	
windspeed	12 m/s					10 m/s	

4 197 204

	Crane with 5.6 t counterweight		
	Outrigger base - length 8,030 m - width 5,900 m		
	Length of swing-away jib 1.8 + 9.4 m		
	Offset of swing-away jib 0 - 15°, (intermediate angle)		
	Main boom - fixed length in m		
	37.85	40.31	40.76
Tel. sec. I	0.00	0.89	0.55
Tel. sec. II	0.00	0.55	0.55
Tel. sec. III	0.89	0.49	0.49
Tel. sec. IV	0.89	0.49	0.49
Tel. sec. V	0.89	0.49	0.89
Slewing range	360°		
Radius in m	Lifting capacities in t		
10.0	12.3		
11.0	10.9	8.5	9.3
12.0	9.6	7.3	8.1
13.0	8.5	6.3	7.1
14.0	7.5	5.4	6.2
15.0	6.7	4.6	5.4
16.0	6.0	4.0	4.7
18.0	4.8	2.8	3.5
20.0	3.8	1.9	2.6
22.0	3.0	1.1	1.8
24.0	2.2		1.2
26.0	1.6		
28.0	1.0		
RCL code	5200		
Max. permitted	12 m/s		
wind speed	12 m/s		

4 197 225

	Crane with 1 t counterweight				
	Outrigger base - length 8,030 m - width 5,900 m				
	Length of swing-away jib 1.8 + 9.4 m				
	Offset of swing-away jib 15 - 30°, (intermediate angle)				
	Main boom - fixed length in m				
	31.86	32.57	34.04	37.08	37.85
Tel. sec. I	0.00	0.55	0.00	0.55	0.00
Tel. sec. II	0.55	0.55	0.00	0.55	0.00
Tel. sec. III	0.49	0.49	0.49	0.49	0.89
Tel. sec. IV	0.49	0.49	0.89	0.49	0.89
Tel. sec. V	0.49	0.00	0.89	0.49	0.89
Slewing range	360°				
Radius in m	Lifting capacities in t				
11.0	9.4	8.1	10.0	8.1	
12.0	8.1	6.9	8.7	6.9	8.2
13.0	7.0	5.8	7.7	5.9	7.2
14.0	6.1	4.9	6.8	5.1	6.3
15.0	5.3	4.2	6.0	4.3	5.6
16.0	4.6	3.5	5.3	3.7	4.9
18.0	3.5	2.3	4.2	2.5	3.8
20.0	2.5	1.4	3.2	1.7	2.9
22.0	1.6		2.4	0.9	2.1
24.0	0.9		1.6		1.4
26.0			1.0		0.8
RCL code	5000				
Max. permitted	12 m/s				
windspeed	12 m/s				

	Crane with 44.5 t counterweight										
	Outrigger base - length 8,030 m - width 5,100 m										
	Length of swing-away jib 1.8 + 16.0 m										
	Offset of swing-away jib 15 - 30°, (intermediate angle)										
	Main boom - fixed length in m										
	12.81	17.33	21.93	26.60	27.96	29.37	31.86	32.57	34.04	37.08	
Tel. sec. I	0.00	0.00	0.00	0.00	0.55	0.00	0.00	0.55	0.00	0.55	
Tel. sec. II	0.00	0.00	0.00	0.00	0.55	0.00	0.55	0.55	0.00	0.55	
Tel. sec. III	0.00	0.00	0.00	0.49	0.49	0.00	0.49	0.49	0.49	0.49	
Tel. sec. IV	0.00	0.00	0.49	0.49	0.00	0.89	0.49	0.49	0.89	0.49	
Tel. sec. V	0.00	0.49	0.49	0.49	0.00	0.89	0.49	0.00	0.89	0.49	
Slewing range	360°										
Radius in m	Lifting capacities in t										
14.0	5.4	5.6	5.7	5.7							
15.0	5.2	5.4	5.5	5.6	5.7	5.5	5.6				
16.0	5.1	5.2	5.4	5.5	5.6	5.5	5.6	5.6	5.4	5.6	
18.0	4.8	5.0	5.1	5.2	5.3	5.3	5.4	5.4	5.3	5.4	
20.0	4.5	4.7	4.9	5.0	5.1	5.0	5.1	5.2	5.1	5.3	
22.0	4.3	4.5	4.7	4.8	4.9	4.9	5.0	5.0	5.0	5.1	
24.0	4.1	4.3	4.5	4.7	4.7	4.7	4.8	4.9	4.8	4.9	
26.0	4.1	4.2	4.4	4.5	4.6	4.6	4.7	4.7	4.6	4.8	
28.0		4.1	4.2	4.4	4.4	4.4	4.5	4.6	4.5	4.6	
30.0		4.1	4.1	4.3	4.3	4.3	4.4	4.4	4.4	4.5	
32.0			4.1	4.2	4.2	4.2	4.3	4.3	4.3	4.4	
34.0			4.1	4.1	4.1	3.9	4.2	4.2	4.2	4.3	
36.0				4.1	4.1	3.6	4.1	4.2	4.0	4.2	
38.0				4.1	4.0	3.4	4.1	4.1	3.7	4.2	
40.0					3.4	3.1	4.1	3.6	3.5	3.8	
42.0						2.9	3.8	3.1	3.3	3.3	
44.0							3.4	2.6	3.1	2.9	
46.0									2.9	2.5	
48.0										2.1	
RCL code	6354										
Max. permitted windspeed	14 m/s				12 m/s						
windspeed	14 m/s				12 m/s			11 m/s		10 m/s	

4 198 085

	Crane with 30.9 t counterweight				
	Outrigger base - length 8,030 m - width 5,100 m				
	Length of swing-away jib 1.8 + 16.0 m				
	Offset of swing-away jib 15 - 30°, (intermediate angle)				
	Main boom - fixed length in m				
	51.13	51.58	54.81	57.90	60.00
Tel. sec. I	0.89	0.55	0.89	0.89	1.00
Tel. sec. II	0.89	0.89	0.89	0.89	1.00
Tel. sec. III	0.89	0.89	0.89	1.00	1.00
Tel. sec. IV	0.89	0.89	0.89	1.00	1.00
Tel. sec. V	0.49	0.89	0.89	1.00	1.00
Slewing range	360°				
Radius in m	Lifting capacities in t				
22.0	5.0	5.0	4.9		
24.0	5.0	4.9	4.8	4.7	4.6
26.0	4.9	4.8	4.8	4.7	4.6
28.0	4.6	4.8	4.6	4.6	4.4
30.0	3.9	4.3	4.0	3.9	3.7
32.0	3.3	3.7	3.4	3.3	3.2
34.0	2.7	3.2	2.8	2.8	2.6
36.0	2.3	2.7	2.3	2.3	2.2
38.0	1.8	2.3	1.9	1.9	1.7
40.0	1.4	1.9	1.5	1.5	1.3
42.0	1.1	1.5	1.2	1.2	1.0
44.0		1.2	0.8	0.8	
46.0		0.9			
RCL code	6254				
Max. permitted	10 m/s				
wind speed	10 m/s			9 m/s	

	Crane with 26.3 t counterweight						
	Outrigger base - length 8,030 m - width 5,100 m						
	Length of swing-away jib 1.8 + 16.0 m						
	Offset of swing-away jib 30 - 50°, (intermediate angle)						
	Main boom - fixed length in m						
	37.85	40.31	40.76	43.56	44.52	46.36	47.37
Tel. sec. I	0.00	0.89	0.55	0.89	0.55	0.00	0.89
Tel. sec. II	0.00	0.55	0.55	0.89	0.55	0.89	0.89
Tel. sec. III	0.89	0.49	0.49	0.49	0.49	0.89	0.89
Tel. sec. IV	0.89	0.49	0.49	0.49	0.89	0.89	0.49
Tel. sec. V	0.89	0.49	0.89	0.49	0.89	0.89	0.49
Slewing range	360°						
Radius in m	Lifting capacities in t						
20.0	4.4						
22.0	4.3	4.4	4.3	4.4	4.4		
24.0	4.2	4.3	4.3	4.3	4.3	4.3	4.3
26.0	4.2	4.2	4.2	4.2	4.2	4.2	4.3
28.0	4.1	4.2	4.2	4.2	4.2	4.2	4.2
30.0	4.1	4.0	4.1	3.7	4.1	4.1	3.6
32.0	4.1	3.3	3.8	3.1	3.8	3.9	3.0
34.0	4.0	2.7	3.2	2.5	3.2	3.4	2.5
36.0	3.4	2.2	2.7	2.0	2.7	2.9	2.0
38.0	3.0	1.7	2.3	1.6	2.3	2.4	1.5
40.0	2.5	1.3	1.8	1.1	1.9	2.0	1.1
42.0	2.1	0.8	1.4		1.5	1.7	
44.0			1.0		1.1	1.3	
46.0						0.9	
RCL code	6154						
Max. permitted windspeed	12 m/s	10 m/s					
windspeed	12 m/s	10 m/s					

4 197 974

	Crane with 21.7 t counterweight									
	Outrigger base - length 8,030 m - width 5,100 m									
	Length of swing-away jib 1.8 + 9.4 m									
	Offset of swing-away jib 0 - 15°, (intermediate angle)									
	Main boom - fixed length in m									
	12.81	17.33	21.93	26.60	27.96	29.37	31.86	32.57	34.04	37.08
Tel. sec. I	0.00	0.00	0.00	0.00	0.55	0.00	0.00	0.55	0.00	0.55
Tel. sec. II	0.00	0.00	0.00	0.00	0.55	0.00	0.55	0.55	0.00	0.55
Tel. sec. III	0.00	0.00	0.00	0.49	0.49	0.00	0.49	0.49	0.49	0.49
Tel. sec. IV	0.00	0.00	0.49	0.49	0.00	0.89	0.49	0.49	0.89	0.49
Tel. sec. V	0.00	0.49	0.49	0.49	0.00	0.89	0.49	0.00	0.89	0.49
Slewing range	360°									
Radius in m	Lifting capacities in t									
5.0	16.4									
6.0	15.5	15.6								
7.0	14.7	15.0	15.1							
8.0	13.8	14.4	14.6	14.7	15.2					
9.0	13.0	13.8	14.1	14.2	14.8	13.4	14.2	14.7	13.0	
10.0	12.3	13.1	13.7	13.9	14.4	13.1	13.9	14.3	12.8	13.7
11.0	11.6	12.5	13.2	13.5	14.0	12.4	13.6	14.0	12.6	13.4
12.0	11.1	11.8	12.7	13.1	13.6	11.7	13.3	13.6	12.1	13.2
13.0	10.6	11.1	12.2	12.8	12.3	11.0	13.0	12.1	11.5	12.1
14.0	10.1	10.5	11.6	12.4	11.0	10.3	12.1	10.8	10.9	10.8
15.0	9.7	10.0	11.0	11.9	9.8	9.8	11.0	9.7	10.3	9.8
16.0	9.2	9.5	10.5	11.0	8.8	9.2	10.0	8.7	9.8	8.8
18.0	8.5	8.6	9.6	9.2	7.1	8.1	8.3	7.1	8.9	7.2
20.0	7.8	7.8	8.0	7.8	5.8	7.4	7.0	5.8	7.6	5.9
21.9	6.8									
22.0		6.7	6.7	6.5	4.7	6.7	5.9	4.7	6.5	4.9
24.0		5.6	5.7	5.5	3.6	5.8	4.9	3.8	5.6	4.0
26.0			4.8	4.6	2.7	4.9	4.1	3.0	4.8	3.2
26.4		4.7								
28.0			4.1	3.8	2.0	4.1	3.3	2.2	4.0	2.6
30.0			3.4	3.2	1.3	3.5	2.6	1.6	3.4	1.9
31.0			3.2							
32.0				2.6		2.9	2.1	1.0	2.8	1.3
34.0				2.1		2.4	1.6		2.3	0.8
35.7				1.8						
36.0						2.0	1.1		1.9	
38.0									1.5	
38.4						1.6				
40.0									1.1	
42.0									0.8	
RCL code	5950									
Max. permitted	14 m/s					12 m/s				
wind speed	14 m/s					13 m/s	12 m/s			

	Crane with 19.4 t counterweight									
	Outrigger base - length 8,030 m - width 5,100 m									
	Length of swing-away jib 1.8 + 9.4 m									
	Offset of swing-away jib 30 - 50°, (intermediate angle)									
	Main boom - fixed length in m									
	12.81	17.33	21.93	26.60	27.96	29.37	31.86	32.57	34.04	37.08
Tel. sec. I	0.00	0.00	0.00	0.00	0.55	0.00	0.00	0.55	0.00	0.55
Tel. sec. II	0.00	0.00	0.00	0.00	0.55	0.00	0.55	0.55	0.00	0.55
Tel. sec. III	0.00	0.00	0.00	0.49	0.49	0.00	0.49	0.49	0.49	0.49
Tel. sec. IV	0.00	0.00	0.49	0.49	0.00	0.89	0.49	0.49	0.89	0.49
Tel. sec. V	0.00	0.49	0.49	0.49	0.00	0.89	0.49	0.00	0.89	0.49
Slewing range	360°									
Radius in m	Lifting capacities in t									
9.0	9.2									
10.0	9.0	9.1								
11.0	8.8	9.0	9.1							
12.0	8.6	8.8	8.9	9.0	9.1					
13.0	8.3	8.7	8.8	8.9	9.0	8.9	9.0	9.1		
14.0	8.2	8.5	8.7	8.8	8.9	8.8	8.9	9.0	8.9	9.0
15.0	8.2	8.3	8.6	8.7	8.8	8.7	8.8	8.9	8.8	8.9
16.0	8.1	8.2	8.3	8.6	8.7	8.6	8.7	8.8	8.7	8.8
18.0		8.1	8.2	8.3	7.7	8.0	8.6	7.6	8.3	7.7
20.0		7.6	8.1	8.0	6.2	7.3	7.2	6.2	7.8	6.4
22.0			6.7	6.6	4.9	6.7	6.0	5.0	6.7	5.2
24.0				5.5	3.9	5.8	5.0	4.0	5.7	4.2
26.0				4.5	2.9	4.9	4.2	3.2	4.8	3.4
28.0					2.0	4.1	3.3	2.3	4.0	2.7
30.0							2.6	1.6	3.3	2.0
32.0									2.7	1.4
34.0										0.9
RCL code	5850									
Max. permitted	14 m/s						12 m/s			
wind speed	14 m/s						12 m/s			

	Crane with 17.1 t counterweight						
	Outrigger base - length 8,030 m - width 5,100 m						
	Length of swing-away jib 1.8 + 16.0 m						
	Offset of swing-away jib 0 - 15°, (intermediate angle)						
	Main boom - fixed length in m						
	37.85	40.31	40.76	43.56	44.52	46.36	47.37
Tel. sec. I	0.00	0.89	0.55	0.89	0.55	0.00	0.89
Tel. sec. II	0.00	0.55	0.55	0.89	0.55	0.89	0.89
Tel. sec. III	0.89	0.49	0.49	0.49	0.49	0.89	0.89
Tel. sec. IV	0.89	0.49	0.49	0.49	0.89	0.89	0.49
Tel. sec. V	0.89	0.49	0.89	0.49	0.89	0.89	0.49
Slewing range	360°						
Radius in m	Lifting capacities in t						
13.0	6.2						
14.0	6.1	6.4	6.3	6.3	6.0		
15.0	6.0	6.3	6.2	6.2	6.0	5.8	6.0
16.0	6.0	6.3	6.1	6.2	5.9	5.7	5.9
18.0	5.8	5.6	6.0	5.3	5.8	5.6	5.0
20.0	5.7	4.5	5.1	4.2	5.0	5.2	4.0
22.0	5.3	3.6	4.2	3.3	4.1	4.3	3.1
24.0	4.5	2.8	3.4	2.5	3.4	3.5	2.4
26.0	3.8	2.2	2.8	1.9	2.7	2.9	1.8
28.0	3.2	1.6	2.2	1.3	2.1	2.3	1.2
30.0	2.7	1.1	1.7	0.9	1.7	1.8	
32.0	2.2		1.3		1.2	1.4	
34.0	1.7		0.8		0.8	1.0	
36.0	1.3						
38.0	1.0						
RCL code	5754						
Max. permitted windspeed	12 m/s	10 m/s					
windspeed	12 m/s	10 m/s					

	Crane with 12.5 t counterweight		
	Outrigger base - length 8,030 m - width 5,100 m		
	Length of swing-away jib 1.8 + 16.0 m		
	Offset of swing-away jib 0°		
	Main boom - fixed length in m		
	37.85	40.31	40.76
Tel. sec. I	0.00	0.89	0.55
Tel. sec. II	0.00	0.55	0.55
Tel. sec. III	0.89	0.49	0.49
Tel. sec. IV	0.89	0.49	0.49
Tel. sec. V	0.89	0.49	0.89
Slewing range	360°		
Radius in m	Lifting capacities in t		
9.0	6.9	7.5	7.2
10.0	6.8	7.4	7.1
11.0	6.8	7.3	7.1
12.0	6.7	7.3	7.0
13.0	6.7	7.2	6.9
14.0	6.6	6.9	6.9
15.0	6.5	6.1	6.7
16.0	6.5	5.4	6.0
18.0	6.0	4.2	4.8
20.0	4.9	3.3	3.9
22.0	4.1	2.4	3.1
24.0	3.4	1.8	2.4
26.0	2.8	1.2	1.8
28.0	2.3		1.3
30.0	1.8		0.8
32.0	1.3		
34.0	0.9		
RCL code	5554		
Max. permitted	12 m/s	10 m/s	
wind speed	12 m/s	10 m/s	

	Crane with 7.9 t counterweight				
	Outrigger base - length 8,030 m - width 5,100 m				
	Length of swing-away jib 1.8 + 9.4 m				
	Offset of swing-away jib 30 - 50°, (intermediate angle)				
	Main boom - fixed length in m				
	31.86	32.57	34.04	37.08	37.85
Tel. sec. I	0.00	0.55	0.00	0.55	0.00
Tel. sec. II	0.55	0.55	0.00	0.55	0.00
Tel. sec. III	0.49	0.49	0.49	0.49	0.89
Tel. sec. IV	0.49	0.49	0.89	0.49	0.89
Tel. sec. V	0.49	0.00	0.89	0.49	0.89
Slewing range	360°				
Radius in m	Lifting capacities in t				
13.0	9.0	8.1			
14.0	8.1	7.0	8.6	7.1	8.2
15.0	7.2	6.1	7.7	6.2	7.3
16.0	6.4	5.3	6.9	5.4	6.6
18.0	5.0	4.0	5.6	4.1	5.3
20.0	3.9	2.9	4.5	3.1	4.2
22.0	3.0	2.0	3.6	2.2	3.3
24.0	2.1	1.1	2.8	1.5	2.6
26.0	1.4		2.1	0.8	1.9
28.0			1.5		1.3
30.0			1.0		0.8
RCL code	5350				
Max. permitted	12 m/s				
windspeed	12 m/s				

4 198 064

	Crane with 1 t counterweight			
	Outrigger base - length 8,030 m - width 5,100 m			
	Length of swing-away jib 1.8 + 9.4 m			
	Offset of swing-away jib 0 - 15°, (intermediate angle)			
	Main boom - fixed length in m			
	12.81	17.33	21.93	26.60
Tel. sec. I	0.00	0.00	0.00	0.00
Tel. sec. II	0.00	0.00	0.00	0.00
Tel. sec. III	0.00	0.00	0.00	0.49
Tel. sec. IV	0.00	0.00	0.49	0.49
Tel. sec. V	0.00	0.49	0.49	0.49
Slewing range	360°			
Radius in m	Lifting capacities in t			
5.0	16.4			
6.0	15.5	15.6		
7.0	14.7	15.0	15.1	
8.0	13.8	13.7	13.0	11.9
9.0	12.0	11.5	11.0	10.1
10.0	10.1	9.8	9.3	8.6
11.0	8.3	8.4	8.0	7.3
12.0	6.9	7.2	6.9	6.3
13.0	5.8	6.0	6.0	5.4
14.0	4.8	5.0	5.1	4.7
15.0	4.0	4.2	4.3	4.0
16.0	3.3	3.5	3.6	3.3
18.0	2.2	2.4	2.5	2.2
20.0	1.4	1.5	1.6	1.3
21.9	0.8			
22.0		0.9	0.9	
RCL code	5050			
Max. permitted	14 m/s			
windspeed	14 m/s			

Swing-away jib - fully extended outrigger base

	Crane with 30.9 t counterweight									
	Outrigger base - length 8,030 m - width 7,600 m									
	Length of swing-away jib 1.8 + 24.0 m									
	Offset of swing-away jib 0°									
	Main boom - fixed length in m									
	12.81	17.33	21.93	26.60	27.96	29.37	31.86	32.57	34.04	37.08
Tel. sec. I	0.00	0.00	0.00	0.00	0.55	0.00	0.00	0.55	0.00	0.55
Tel. sec. II	0.00	0.00	0.00	0.00	0.55	0.00	0.55	0.55	0.00	0.55
Tel. sec. III	0.00	0.00	0.00	0.49	0.49	0.00	0.49	0.49	0.49	0.49
Tel. sec. IV	0.00	0.00	0.49	0.49	0.00	0.89	0.49	0.49	0.89	0.49
Tel. sec. V	0.00	0.49	0.49	0.49	0.00	0.89	0.49	0.00	0.89	0.49
Slewing range	360°									
Radius in m	Lifting capacities in t									
42.0			2.6	2.8	2.9	2.6	3.1	3.1	2.9	3.2
44.0			2.6	2.7	2.8	2.4	2.9	3.0	2.7	3.1
45.9			2.5							
46.0				2.6	2.7	2.3	2.8	2.8	2.5	2.9
48.0				2.6	2.4	2.1	2.7	2.4	2.4	2.5
50.0				2.5	2.1	2.0	2.6	2.0	2.2	2.2
50.6				1.6						
52.0						1.8	2.5	1.7	2.1	1.8
53.3						1.4				
54.0							2.2	1.4	2.0	1.5
56.0								1.2	1.9	1.3
58.0										1.0
60.0										0.8
RCL code	4208									
Max. permitted	14 m/s	12 m/s				10 m/s				
wind speed	14 m/s	12 m/s		11 m/s	10 m/s		9 m/s		8 m/s	

4 195 720

	Crane with 24 t counterweight				
	Outrigger base - length 8,030 m - width 7,600 m				
	Length of swing-away jib 1.8 + 24.0 m				
	Offset of swing-away jib 0°				
	Main boom - fixed length in m				
	51.13	51.58	54.81	57.90	60.00
Tel. sec. I	0.89	0.55	0.89	0.89	1.00
Tel. sec. II	0.89	0.89	0.89	0.89	1.00
Tel. sec. III	0.89	0.89	0.89	1.00	1.00
Tel. sec. IV	0.89	0.89	0.89	1.00	1.00
Tel. sec. V	0.49	0.89	0.89	1.00	1.00
Slewing range	360°				
Radius in m	Lifting capacities in t				
12.0	4.0	3.8			
13.0	4.0	3.8	3.6		
14.0	3.9	3.8	3.6	3.1	3.1
15.0	3.9	3.7	3.6	3.1	3.1
16.0	3.9	3.7	3.6	3.1	3.1
18.0	3.9	3.7	3.5	3.1	3.1
20.0	3.8	3.7	3.5	3.1	3.1
22.0	3.8	3.6	3.5	3.1	3.1
24.0	3.7	3.6	3.4	3.1	3.1
26.0	3.7	3.6	3.4	3.1	3.1
28.0	3.7	3.5	3.4	3.1	3.1
30.0	3.6	3.5	3.4	3.1	3.1
32.0	3.6	3.5	3.3	3.1	3.1
34.0	3.6	3.4	3.3	3.1	3.1
36.0	3.3	3.4	3.3	3.1	3.1
38.0	2.8	3.2	2.8	2.8	2.6
40.0	2.4	2.8	2.4	2.4	2.2
42.0	1.9	2.4	2.0	2.0	1.8
44.0	1.5	2.0	1.6	1.6	1.4
46.0	1.1	1.6	1.2	1.3	1.1
48.0	0.8	1.2	0.9	0.9	
50.0		0.9			
RCL code	4008				
Max. permitted	10 m/s				
windspeed	9 m/s	8 m/s			

4 195 744

	Crane with 19.4 t counterweight						
	Outrigger base - length 8,030 m - width 7,600 m						
	Length of swing-away jib 1.8 + 24.0 m						
	Offset of swing-away jib 0 - 15°, (intermediate angle)						
	Main boom - fixed length in m						
	37.85	40.31	40.76	43.56	44.52	46.36	47.37
Tel. sec. I	0.00	0.89	0.55	0.89	0.55	0.00	0.89
Tel. sec. II	0.00	0.55	0.55	0.89	0.55	0.89	0.89
Tel. sec. III	0.89	0.49	0.49	0.49	0.49	0.89	0.89
Tel. sec. IV	0.89	0.49	0.49	0.49	0.89	0.89	0.49
Tel. sec. V	0.89	0.49	0.89	0.49	0.89	0.89	0.49
Slewing range	360°						
Radius in m	Lifting capacities in t						
18.0	4.0	4.3	4.1	4.1	3.9		
20.0	4.0	4.2	4.1	4.1	3.9	3.7	3.9
22.0	3.9	4.0	4.0	4.0	3.8	3.7	3.8
24.0	3.7	3.9	3.8	3.9	3.8	3.6	3.8
26.0	3.6	3.8	3.7	3.8	3.7	3.6	3.7
28.0	3.5	3.6	3.6	3.6	3.6	3.5	3.6
30.0	3.4	3.5	3.5	3.5	3.5	3.4	3.5
32.0	3.3	3.4	3.4	3.4	3.4	3.3	3.4
34.0	3.2	3.3	3.3	3.1	3.3	3.2	2.9
36.0	3.1	2.8	3.2	2.6	3.2	3.2	2.5
38.0	3.0	2.3	2.8	2.1	2.8	3.0	2.0
40.0	2.9	1.8	2.4	1.6	2.3	2.5	1.5
42.0	2.8	1.4	1.9	1.2	1.9	2.1	1.1
44.0	2.4	1.1	1.6	0.9	1.6	1.7	
46.0	2.1		1.2		1.2	1.4	
48.0	1.7		0.9		0.9	1.1	
50.0	1.5					0.8	
52.0	1.2						
54.0	1.0						
RCL code	3808						
Max. permitted	10 m/s						
wind speed	9 m/s	10 m/s			9 m/s		10 m/s

	Crane with 14.8 t counterweight									
	Outrigger base - length 8,030 m - width 7,600 m									
	Length of swing-away jib 1.8 + 24.0 m									
	Offset of swing-away jib 30 - 50°, (intermediate angle)									
	Main boom - fixed length in m									
	12.81	17.33	21.93	26.60	27.96	29.37	31.86	32.57	34.04	37.08
Tel. sec. I	0.00	0.00	0.00	0.00	0.55	0.00	0.00	0.55	0.00	0.55
Tel. sec. II	0.00	0.00	0.00	0.00	0.55	0.00	0.55	0.55	0.00	0.55
Tel. sec. III	0.00	0.00	0.00	0.49	0.49	0.00	0.49	0.49	0.49	0.49
Tel. sec. IV	0.00	0.00	0.49	0.49	0.00	0.89	0.49	0.49	0.89	0.49
Tel. sec. V	0.00	0.49	0.49	0.49	0.00	0.89	0.49	0.00	0.89	0.49
Slewing range	360°									
Radius in m	Lifting capacities in t									
22.0	2.8									
24.0	2.7	2.8	2.8	2.8						
26.0	2.6	2.7	2.7	2.7	2.7	2.7	2.8	2.8	2.7	2.8
28.0	2.5	2.6	2.6	2.7	2.7	2.7	2.7	2.7	2.7	2.7
30.0	2.5	2.5	2.6	2.6	2.6	2.6	2.6	2.7	2.6	2.7
32.0	2.5	2.5	2.5	2.6	2.6	2.6	2.6	2.6	2.6	2.6
34.0		2.5	2.5	2.5	2.5	2.5	2.6	2.6	2.6	2.6
36.0			2.5	2.5	2.5	2.5	2.5	2.5	2.5	2.6
38.0			2.5	2.5	2.5	2.5	2.5	2.5	2.5	2.5
40.0				2.5	2.3	2.5	2.5	2.4	2.5	2.5
42.0				2.5	1.8	2.5	2.5	1.9	2.5	2.1
44.0						2.5	2.1	1.5	2.5	1.7
46.0							1.7	1.0	2.2	1.3
48.0										0.9
RCL code	3608									
Max. permitted windspeed	14 m/s	12 m/s				10 m/s				
windspeed	14 m/s	12 m/s				10 m/s				

4 195 800

	Crane with 5.6 t counterweight		
	Outrigger base - length 8,030 m - width 7,600 m		
	Length of swing-away jib 1.8 + 24.0 m		
	Offset of swing-away jib 0°		
	Main boom - fixed length in m		
	37.85	40.31	40.76
Tel. sec. I	0.00	0.89	0.55
Tel. sec. II	0.00	0.55	0.55
Tel. sec. III	0.89	0.49	0.49
Tel. sec. IV	0.89	0.49	0.49
Tel. sec. V	0.89	0.49	0.89
Slewing range	360°		
Radius in m	Lifting capacities in t		
9.0	4.4		
10.0	4.4	4.9	4.7
11.0	4.4	4.9	4.7
12.0	4.4	4.8	4.6
13.0	4.4	4.8	4.6
14.0	4.4	4.8	4.6
15.0	4.3	4.7	4.5
16.0	4.3	4.7	4.5
18.0	4.3	4.6	4.4
20.0	4.2	4.5	4.4
22.0	4.1	4.0	4.3
24.0	4.1	3.2	3.7
26.0	4.0	2.5	3.0
28.0	3.4	1.9	2.4
30.0	2.9	1.4	1.9
32.0	2.4	0.9	1.5
34.0	1.9		1.0
36.0	1.5		
38.0	1.1		
RCL code	3208		
Max. permitted	10 m/s		
windspeed	10 m/s		

	Crane with 44.5 t counterweight				
	Outrigger base - length 8,030 m - width 6,700 m				
	Length of swing-away jib 1.8 + 24.0 m				
	Offset of swing-away jib 30 - 50°, (intermediate angle)				
	Main boom - fixed length in m				
	51.13	51.58	54.81	57.90	60.00
Tel. sec. I	0.89	0.55	0.89	0.89	1.00
Tel. sec. II	0.89	0.89	0.89	0.89	1.00
Tel. sec. III	0.89	0.89	0.89	1.00	1.00
Tel. sec. IV	0.89	0.89	0.89	1.00	1.00
Tel. sec. V	0.49	0.89	0.89	1.00	1.00
Slewing range	360°				
Radius in m	Lifting capacities in t				
32.0	2.6	2.6	2.6		
34.0	2.6	2.6	2.6	2.6	2.6
36.0	2.6	2.6	2.6	2.6	2.6
38.0	2.5	2.5	2.5	2.5	2.5
40.0	2.5	2.5	2.5	2.5	2.5
42.0	2.5	2.5	2.5	2.5	2.5
44.0	2.5	2.5	2.5	2.5	2.5
46.0	2.5	2.5	2.5	2.5	2.5
48.0	2.5	2.5	2.5	2.5	2.5
50.0	2.5	2.5	2.5	2.5	2.5
52.0	2.5	2.5	2.5	2.4	2.4
54.0	2.5	2.5	2.5	2.3	2.3
56.0	2.3	2.5	2.4	2.2	2.2
58.0	2.0	2.3	2.1	2.0	2.0
60.0	1.6	2.0	1.8	1.8	1.7
62.0			1.5	1.5	1.4
64.0				1.2	1.1
66.0					0.8
RCL code	4358				
Max. permitted	10 m/s				
windspeed	7 m/s				

	Crane with 24 t counterweight									
	Outrigger base - length 8,030 m - width 6,700 m									
	Length of swing-away jib 1.8 + 24.0 m									
	Offset of swing-away jib 0°									
	Main boom - fixed length in m									
	12.81	17.33	21.93	26.60	27.96	29.37	31.86	32.57	34.04	37.08
Tel. sec. I	0.00	0.00	0.00	0.00	0.55	0.00	0.00	0.55	0.00	0.55
Tel. sec. II	0.00	0.00	0.00	0.00	0.55	0.00	0.55	0.55	0.00	0.55
Tel. sec. III	0.00	0.00	0.00	0.49	0.49	0.00	0.49	0.49	0.49	0.49
Tel. sec. IV	0.00	0.00	0.49	0.49	0.00	0.89	0.49	0.49	0.89	0.49
Tel. sec. V	0.00	0.49	0.49	0.49	0.00	0.89	0.49	0.00	0.89	0.49
Slewing range	360°									
Radius in m	Lifting capacities in t									
42.0			2.6	2.8	1.8	2.6	2.6	1.8	2.9	1.9
44.0			2.6	2.7	1.4	2.4	2.2	1.4	2.7	1.5
45.9			2.5							
46.0				2.5	1.1	2.3	1.9	1.1	2.4	1.2
48.0				2.1	0.8	2.1	1.6	0.8	2.1	0.9
50.0				1.9		2.0	1.3		1.8	
50.6				1.6						
52.0						1.7	1.1		1.5	
53.3						1.4				
54.0							0.8		1.3	
56.0									1.1	
RCL code	4058									
Max. permitted	14 m/s	12 m/s				10 m/s				
windspeed	14 m/s	12 m/s		11 m/s		10 m/s				

	Crane with 19.4 t counterweight									
	Outrigger base - length 8,030 m - width 6,700 m									
	Length of swing-away jib 1.8 + 24.0 m									
	Offset of swing-away jib 0 - 15°, (intermediate angle)									
	Main boom - fixed length in m									
	12.81	17.33	21.93	26.60	27.96	29.37	31.86	32.57	34.04	37.08
Tel. sec. I	0.00	0.00	0.00	0.00	0.55	0.00	0.00	0.55	0.00	0.55
Tel. sec. II	0.00	0.00	0.00	0.00	0.55	0.00	0.55	0.55	0.00	0.55
Tel. sec. III	0.00	0.00	0.00	0.49	0.49	0.00	0.49	0.49	0.49	0.49
Tel. sec. IV	0.00	0.00	0.49	0.49	0.00	0.89	0.49	0.49	0.89	0.49
Tel. sec. V	0.00	0.49	0.49	0.49	0.00	0.89	0.49	0.00	0.89	0.49
Slewing range	360°									
Radius in m	Lifting capacities in t									
11.0	5.0									
12.0	4.9	4.8								
13.0	4.8	4.7	4.8							
14.0	4.6	4.6	4.7	4.7						
15.0	4.4	4.5	4.6	4.6	4.7	4.3	4.6			
16.0	4.3	4.4	4.4	4.5	4.6	4.3	4.5	4.6	4.2	
18.0	4.0	4.1	4.2	4.3	4.4	4.2	4.3	4.4	4.2	4.3
20.0	3.7	3.9	4.0	4.1	4.2	4.0	4.1	4.2	4.0	4.2
22.0	3.5	3.6	3.8	3.9	4.0	3.8	4.0	4.0	3.9	4.0
24.0	3.3	3.4	3.6	3.7	3.8	3.7	3.8	3.9	3.7	3.9
26.0	3.1	3.3	3.4	3.5	3.6	3.5	3.7	3.7	3.6	3.7
28.0	2.9	3.1	3.3	3.4	3.5	3.4	3.5	3.6	3.5	3.6
30.0	2.8	3.0	3.1	3.3	3.3	3.3	3.4	3.4	3.3	3.5
32.0	2.7	2.8	3.0	3.1	3.2	3.2	3.3	3.3	3.2	3.4
34.0	2.6	2.7	2.9	3.0	2.9	3.0	3.1	2.9	3.1	3.0
36.0	2.5	2.6	2.8	2.9	2.3	2.9	3.0	2.3	3.0	2.4
36.8	2.5									
38.0		2.6	2.7	2.8	1.9	2.9	2.7	1.9	2.9	2.0
40.0		2.5	2.6	2.7	1.5	2.8	2.3	1.4	2.7	1.6
41.3		2.5								
42.0			2.6	2.4	1.1	2.6	1.9	1.1	2.4	1.2
44.0			2.4	2.1		2.2	1.5		2.0	0.9
45.9			2.2							
46.0				1.8		1.9	1.2		1.7	
48.0				1.5		1.6	1.0		1.4	
50.0						1.4			1.2	
50.6				1.2						
52.0						1.2			0.9	
53.3						1.1				
RCL code	3858									
Max. permitted	14 m/s	12 m/s				10 m/s				
windspeed	14 m/s	12 m/s		11 m/s	12 m/s	10 m/s				

4 196 615

	Crane with 12.5 t counterweight		
	Outrigger base - length 8,030 m - width 6,700 m		
	Length of swing-away jib 1.8 + 24.0 m		
	Offset of swing-away jib 15 - 30°, (intermediate angle)		
	Main boom - fixed length in m		
	37.85	40.31	40.76
Tel. sec. I	0.00	0.89	0.55
Tel. sec. II	0.00	0.55	0.55
Tel. sec. III	0.89	0.49	0.49
Tel. sec. IV	0.89	0.49	0.49
Tel. sec. V	0.89	0.49	0.89
Slewing range	360°		
Radius in m	Lifting capacities in t		
24.0	3.2	3.3	3.3
26.0	3.2	3.2	3.2
28.0	3.1	3.1	3.1
30.0	3.0	3.0	3.0
32.0	2.9	2.4	2.9
34.0	2.8	1.9	2.4
36.0	2.7	1.5	1.9
38.0	2.3	1.1	1.5
40.0	1.8		1.1
42.0	1.5		
44.0	1.1		
46.0	0.8		
RCL code	3558		
Max. permitted	10 m/s		
windspeed	10 m/s		

	Crane with 1 t counterweight			
	Outrigger base - length 8,030 m - width 6,700 m			
	Length of swing-away jib 1.8 + 24.0 m			
	Offset of swing-away jib 30 - 50°, (intermediate angle)			
	Main boom - fixed length in m			
	12.81	17.33	21.93	26.60
Tel. sec. I	0.00	0.00	0.00	0.00
Tel. sec. II	0.00	0.00	0.00	0.00
Tel. sec. III	0.00	0.00	0.00	0.49
Tel. sec. IV	0.00	0.00	0.49	0.49
Tel. sec. V	0.00	0.49	0.49	0.49
Slewing range	360°			
Radius in m	Lifting capacities in t			
22.0	2.8			
24.0	2.7	2.8	2.8	2.8
26.0	2.6	2.7	2.7	2.7
28.0	2.5	2.6	2.6	2.7
30.0	2.5	2.5	2.6	2.6
32.0	2.3	2.3	2.3	2.1
34.0		1.8	1.8	1.6
36.0			1.4	1.2
38.0			0.9	0.8
RCL code	3058			
Max. permitted	14 m/s	12 m/s		
windspeed	14 m/s	12 m/s		

	Crane with 21.7 t counterweight									
	Outrigger base - length 8,030 m - width 5,900 m									
	Length of swing-away jib 1.8 + 24.0 m									
	Offset of swing-away jib 15 - 30°, (intermediate angle)									
	Main boom - fixed length in m									
	12.81	17.33	21.93	26.60	27.96	29.37	31.86	32.57	34.04	37.08
Tel. sec. I	0.00	0.00	0.00	0.00	0.55	0.00	0.00	0.55	0.00	0.55
Tel. sec. II	0.00	0.00	0.00	0.00	0.55	0.00	0.55	0.55	0.00	0.55
Tel. sec. III	0.00	0.00	0.00	0.49	0.49	0.00	0.49	0.49	0.49	0.49
Tel. sec. IV	0.00	0.00	0.49	0.49	0.00	0.89	0.49	0.49	0.89	0.49
Tel. sec. V	0.00	0.49	0.49	0.49	0.00	0.89	0.49	0.00	0.89	0.49
Slewing range	360°									
Radius in m	Lifting capacities in t									
18.0	3.5	3.6								
20.0	3.3	3.4	3.5	3.5						
22.0	3.2	3.2	3.3	3.4	3.4	3.3	3.4	3.4	3.4	3.4
24.0	3.0	3.1	3.2	3.2	3.3	3.2	3.3	3.3	3.2	3.3
26.0	2.9	3.0	3.0	3.1	3.2	3.1	3.2	3.2	3.1	3.2
28.0	2.7	2.8	2.9	3.0	3.1	3.0	3.1	3.1	3.1	3.1
30.0	2.6	2.7	2.8	2.9	3.0	2.9	3.0	3.0	3.0	3.0
32.0	2.5	2.6	2.7	2.8	2.9	2.8	2.9	2.9	2.9	3.0
34.0	2.5	2.6	2.7	2.7	2.8	2.8	2.8	2.8	2.8	2.9
36.0		2.5	2.6	2.7	2.7	2.7	2.7	2.7	2.7	2.8
38.0		2.5	2.5	2.6	2.1	2.6	2.7	2.2	2.7	2.3
40.0			2.5	2.6	1.7	2.6	2.4	1.7	2.6	1.9
42.0			2.5	2.5	1.3	2.5	2.0	1.3	2.5	1.5
44.0				2.1	0.9	2.3	1.7	0.9	2.1	1.1
46.0				1.7		1.9	1.3		1.8	
48.0						1.6	1.0		1.5	
50.0									1.2	
52.0									0.9	
RCL code	5908									
Max. permitted windspeed	14 m/s	12 m/s				10 m/s				
windspeed	14 m/s	12 m/s				10 m/s				

4 197 450

	Crane with 12.5 t counterweight				
	Outrigger base - length 8,030 m - width 5,900 m				
	Length of swing-away jib 1.8 + 24.0 m				
	Offset of swing-away jib 0°				
	Main boom - fixed length in m				
	31.86	32.57	34.04	37.08	37.85
Tel. sec. I	0.00	0.55	0.00	0.55	0.00
Tel. sec. II	0.55	0.55	0.00	0.55	0.00
Tel. sec. III	0.49	0.49	0.49	0.49	0.89
Tel. sec. IV	0.49	0.49	0.89	0.49	0.89
Tel. sec. V	0.49	0.00	0.89	0.49	0.89
Slewing range	360°				
Radius in m	Lifting capacities in t				
8.0	5.3				
9.0	5.3	5.5	4.7	5.1	4.4
10.0	5.2	5.4	4.7	5.1	4.4
11.0	5.1	5.3	4.7	5.0	4.4
12.0	5.1	5.3	4.6	5.0	4.4
13.0	5.0	5.2	4.6	5.0	4.4
14.0	5.0	5.2	4.6	4.9	4.4
15.0	4.9	5.1	4.5	4.9	4.3
16.0	4.9	5.1	4.5	4.8	4.3
18.0	4.8	4.9	4.4	4.7	4.3
20.0	4.7	4.8	4.4	4.6	4.2
22.0	4.6	4.3	4.3	4.3	4.1
24.0	4.4	3.5	4.2	3.5	4.1
26.0	3.7	2.8	4.1	2.8	3.8
28.0	3.1	2.2	3.5	2.3	3.2
30.0	2.6	1.7	3.0	1.8	2.7
32.0	2.1	1.2	2.6	1.3	2.2
34.0	1.6		2.1	0.9	1.8
36.0	1.2		1.7		1.4
38.0	0.8		1.3		1.0
40.0			1.0		
RCL code	5508				
Max. permitted	10 m/s				
windspeed	10 m/s				

CLICK HERE TO **DOWNLOAD** THE COMPLETE MANUAL

- Thank you very much for reading the preview of the manual.
- You can download the complete manual from: www.heydownloads.com by clicking the link below



- Please note: If there is no response to CLICKING the link, please download this PDF first and then click on it.

CLICK HERE TO **DOWNLOAD** THE COMPLETE MANUAL