

# **Lifting Capacities and Conditions for moving the crane when it is rigged**

## **KMK 6200**

**Serial - Nr.**

CLICK HERE TO **DOWNLOAD** THE COMPLETE MANUAL

- Thank you very much for reading the preview of the manual.
- You can download the complete manual from: [www.heydownloads.com](http://www.heydownloads.com) by clicking the link below

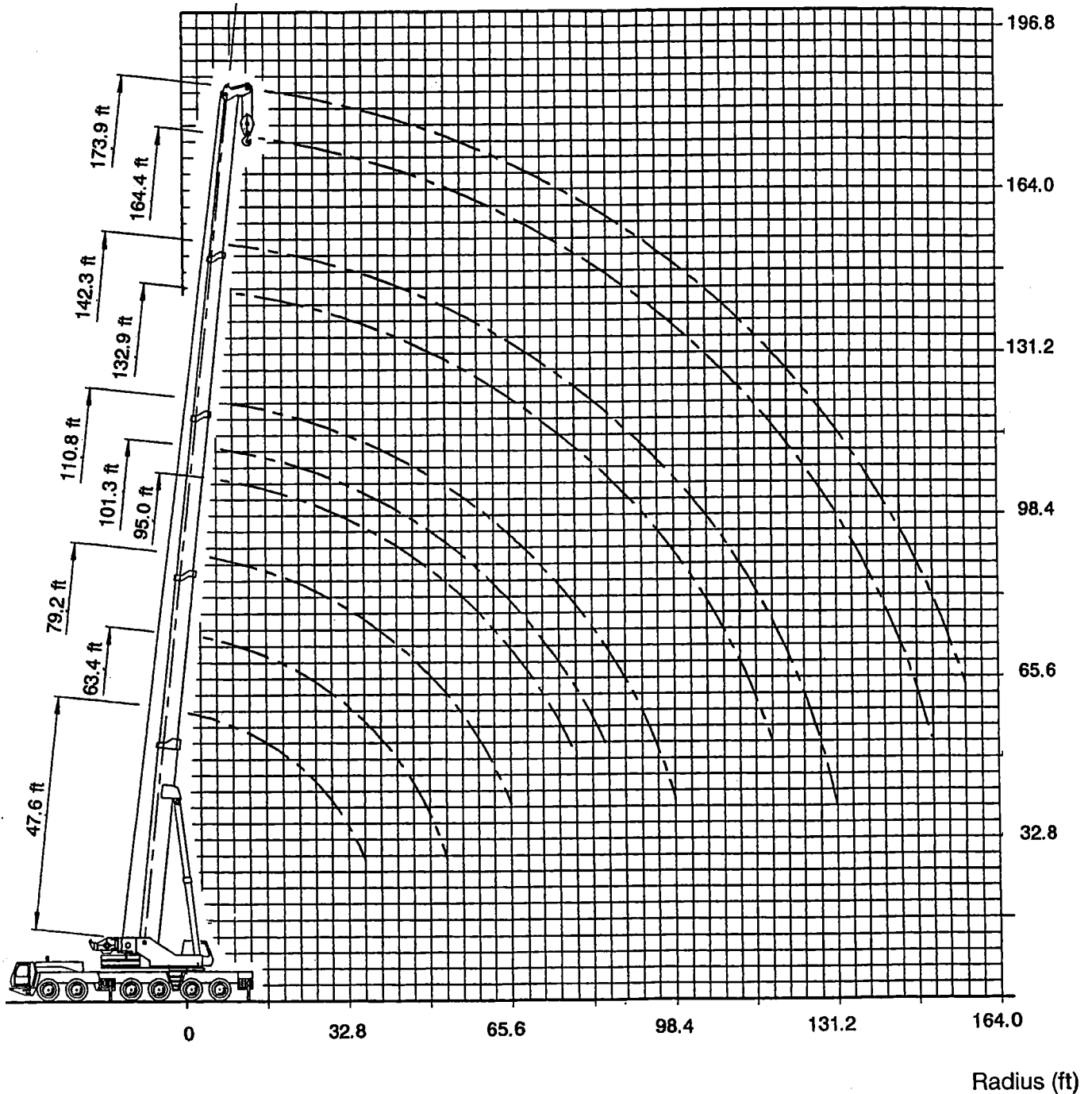
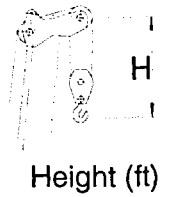


- Please note: If there is no response to CLICKING the link, please download this PDF first and then click on it.

CLICK HERE TO **DOWNLOAD** THE COMPLETE MANUAL

Working range - main boom

Hook blocks					
Lifting capacity in lbs	308 700	220 500	138 900D	138 900E	66 150
Distance H in ft	12.5	11.2	11.0	11.3	10.2

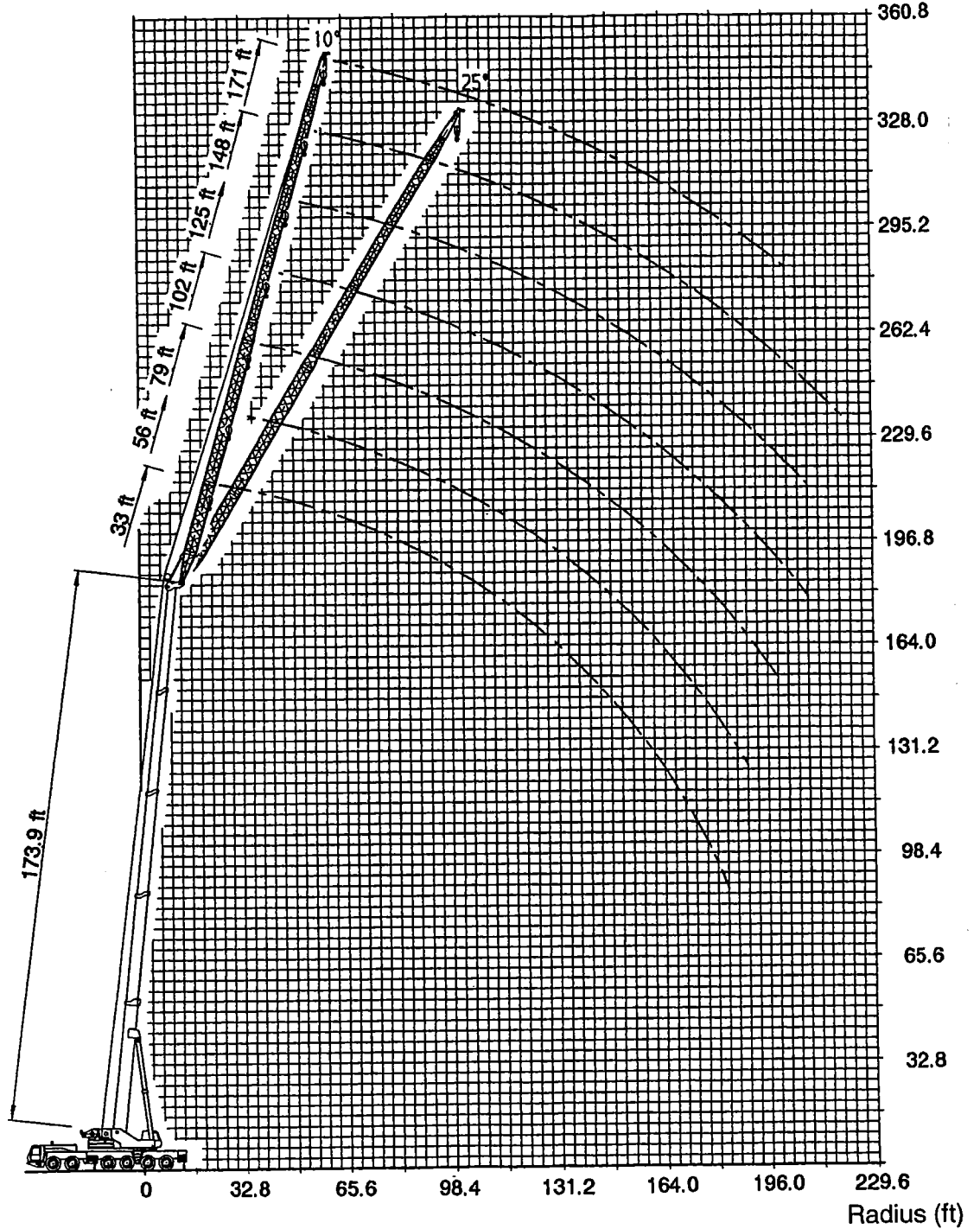


These height curves are only valid in conjunction with the radii listed in the lifting capacity tables.

The sheaves and hook heights are calculated theoretically. The actual values deviate from these values due to the flexion of the boom, depending on the load.

Working range - main boom with boom extension

Hook blocks			
Lifting capacity in lbs	138 900D	138 900E	66 150
Distance H in ft	11.0	11.3	10.2



These height curves are only valid in conjunction with the radii listed in the lifting capacity tables.

The sheaves and hook heights are calculated theoretically. The actual values deviate from these values due to the flexion of the boom, depending on the load.

2 294 580/4 581

2 294 760/4 761

	Crane with 57 300 lbs (26,0 t) counterweight (supporting span 28.4 x 28.2 ft)							
	Main boom - fixed lengths in ft							
	110.8	110.8	132.9	132.9	142.3	142.3	164.4	173.9
Tel. sec. I	0.0	0.0	1.0	0.0	1.0	0.0	1.0	1.0
Tel. sec. II	1.0	0.0	1.0	1.0	1.0	1.0	1.0	1.0
Tel. sec. III	1.0	1.0	0.7	1.0	1.0	1.0	1.0	1.0
Tel. sec. IV	0.0	1.0	0.0	0.7	0.0	1.0	0.7	1.0
Slewing range	360°							
Radius in ft	Lifting capacities in 1000 lbs							
15.0	156.0	123.0						
20.0	145.0	106.0	116.0	112.0	99.0	95.0	75.0	
25.0	130.0	92.0	116.0	108.0	99.0	95.0	75.0	65.0
30.0	115.0	81.0	115.0	99.0	99.0	89.0	75.0	65.0
35.0	103.0	73.0	107.0	90.0	99.0	83.0	75.0	65.0
40.0	93.0	66.0	88.0	82.0	88.0	76.0	75.0	65.0
45.0	80.0	59.0	71.0	75.0	71.0	70.0	72.0	65.0
50.0	66.0	54.0	58.0	68.0	59.0	64.0	61.0	62.0
55.0	55.0	49.0	48.0	59.0	49.0	60.0	52.0	52.0
60.0	45.0	45.0	39.2	50.0	40.2	51.0	44.0	45.0
65.0	38.0	41.6	32.0	42.6	33.0	43.6	37.6	38.2
70.0	32.0	38.2	26.0	36.4	27.2	37.4	31.6	32.6
75.0	27.0	33.2	21.2	31.2	22.2	32.2	26.6	27.6
80.0	22.8	28.8	17.2	27.0	18.2	28.0	22.4	23.4
85.0	19.2	25.0	13.6	23.2	14.6	24.2	18.8	19.8
90.0	16.0	21.8	10.6	20.2	11.6	21.2	15.8	16.8
95.0	13.4	19.0	8.0	17.4	9.0	18.4	13.0	14.0
100.0			5.8	15.0	6.6	15.8	10.6	11.6
105.0			3.8	12.8	4.6	13.8	8.6	9.6
110.0				10.8	2.8	11.8	6.8	7.6
115.0				9.2		10.0	5.0	6.0
120.0						8.4	3.6	4.4
125.0						7.0	2.2	3.0
130.0							5.8	
SLI - Code	410							
Max. permitted wind speed	40 ft/s			30 ft/s				

2 294 606

2 294 786

	Crane with 11 000 lbs (5,0 t) counterweight (supporting span 28.4 x 28.2 ft)								
	Main boom - telescoping lengths in ft								
	47.6-63.4	63.4-79.2	63.4-79.2	79.2-95.0	95.0-110.8	110.8-132.9	132.9-142.3	142.3-164.4	164.4-173.9
Tel. sec. I	0 - 50	50	50 - 100	100	100	100	100	100	100
Tel. sec. II	0	0 - 50	0	0 - 50	50 - 100	100	100	100	100
Tel. sec. III	0	0	0	0	0	0 - 70	70 - 100	100	100
Tel. sec. IV	0	0	0	0	0	0	0	0 - 70	70 - 100
Slewing range	360°								
Radius in ft	Lifting capacities in 1000 lbs								
10.0	78.0	93.0	59.0	75.0					
15.0	78.0	93.0	59.0	75.0	56.0				
20.0	78.0	93.0	59.0	75.0	56.0	81.0	63.0	65.0	
25.0	78.0	93.0	59.0	75.0	56.0	81.0	63.0	65.0	58.0
30.0	78.0	91.0	59.0	75.0	56.0	69.0	63.0	65.0	58.0
35.0	66.0	63.0	56.0	54.0	54.0	48.0	52.0	50.0	55.0
40.0	44.0	45.0	41.0	38.2	38.4	34.2	38.0	36.8	41.8
45.0	31.0	32.0	28.2	26.8	27.4	24.2	28.0	27.4	32.4
50.0	21.4	22.2	19.0	18.4	19.2	16.6	20.4	20.0	25.0
55.0		15.2	12.0	12.0	13.0	10.6	14.4	14.4	19.2
60.0		9.8	6.8	6.8	8.0	6.0	9.6	9.8	14.6
65.0		5.6	2.6	2.6	3.8	2.0	5.6	6.0	10.8
70.0							2.4	2.8	7.4
75.0									4.6
80.0									2.2
SLI - Code	210								
Max. permitted wind speed	to main boom length 110.0 ft = 40 ft/s over main boom length 110.0 ft = 30 ft/s								

\* **The above lifting capacity values are not monitored by the SLI.**  
The SLI must adjust of the SLI-Code to the corresponding main boom - counterweight version.

\* The telescopable load depends, however, on the angle of the boom and on how well the sliding wear pads between the telescope sections are lubricated.

2 294 572/4 573

2 294 752/4 753

	Crane with 88 200 lbs (40,0 t) counterweight (supporting span 28.4 x 20.7 ft)							
	Main boom - fixed lengths in ft							
	110.8	110.8	132.9	132.9	142.3	142.3	164.4	173.9
Tel. sec. I	0.0	0.0	1.0	0.0	1.0	0.0	1.0	1.0
Tel. sec. II	1.0	0.0	1.0	1.0	1.0	1.0	1.0	1.0
Tel. sec. III	1.0	1.0	0.7	1.0	1.0	1.0	1.0	1.0
Tel. sec. IV	0.0	1.0	0.0	0.7	0.0	1.0	0.7	1.0
Slewing range	360°							
Radius in ft	Lifting capacities in 1000 lbs							
15.0	156.0	123.0						
20.0	145.0	106.0	116.0	112.0	99.0	95.0	75.0	
25.0	130.0	92.0	116.0	108.0	99.0	95.0	75.0	65.0
30.0	115.0	81.0	115.0	99.0	99.0	89.0	75.0	65.0
35.0	103.0	73.0	92.0	90.0	91.0	83.0	75.0	65.0
40.0	84.0	66.0	75.0	82.0	75.0	76.0	75.0	65.0
45.0	69.0	59.0	62.0	73.0	62.0	70.0	64.0	65.0
50.0	57.0	54.0	52.0	61.0	52.0	62.0	55.0	55.0
55.0	48.0	49.0	42.4	52.0	43.4	53.0	47.0	47.0
60.0	40.6	45.0	35.0	45.0	36.0	46.0	40.2	40.8
65.0	34.4	40.2	29.0	38.6	30.0	39.4	34.2	35.2
70.0	29.4	35.0	24.2	33.4	25.0	34.4	29.0	30.0
75.0	25.0	30.6	20.0	29.0	20.8	30.0	24.8	25.8
80.0	21.4	27.0	16.4	25.2	17.2	26.2	21.2	22.0
85.0	18.2	23.6	13.2	22.0	14.0	23.0	18.0	18.8
90.0	15.4	20.8	10.4	19.2	11.4	20.0	15.2	16.0
95.0	13.0	18.4	8.0	16.8	9.0	17.6	12.8	13.6
100.0			6.0	14.6	6.8	15.4	10.6	11.4
105.0			4.0	12.6	4.8	13.4	8.6	9.4
110.0			2.4	10.8	3.2	11.6	6.8	7.8
115.0				9.2		10.0	5.2	6.2
120.0						8.4	3.8	4.8
125.0						7.2	2.6	3.4
130.0						6.0		2.2
SLI - Code	512							
Max. permitted wind speed	40 ft/s			30 ft/s				

CLICK HERE TO **DOWNLOAD** THE COMPLETE MANUAL

- Thank you very much for reading the preview of the manual.
- You can download the complete manual from: [www.heydownloads.com](http://www.heydownloads.com) by clicking the link below



- Please note: If there is no response to CLICKING the link, please download this PDF first and then click on it.

CLICK HERE TO **DOWNLOAD** THE COMPLETE MANUAL

	Crane with 26 460 lbs (12,0 t) counterweight (supporting span 28.4 x 20.7 ft)								
	Main boom - telescoping lengths in ft								
	47.6-63.4	63.4-79.2	63.4-79.2	79.2-95.0	95.0-110.8	110.8-132.9	132.9-142.3	142.3-164.4	164.4-173.9
Tel. sec. I	0 - 50	50	50 - 100	100	100	100	100	100	100
Tel. sec. II	0	0 - 50	0	0 - 50	50 - 100	100	100	100	100
Tel. sec. III	0	0	0	0	0	0 - 70	70 - 100	100	100
Tel. sec. IV	0	0	0	0	0	0	0	0 - 70	70 - 100
Slewing range	360°								
Radius in ft	Lifting capacities in 1000 lbs								
10.0	78.0	93.0	59.0	75.0					
15.0	78.0	93.0	59.0	75.0	56.0				
20.0	78.0	93.0	59.0	75.0	56.0	81.0	63.0	65.0	
25.0	78.0	93.0	59.0	75.0	56.0	73.0	63.0	65.0	58.0
30.0	68.0	66.0	59.0	59.0	56.0	52.0	55.0	53.0	57.0
35.0	48.0	49.0	45.0	42.6	42.4	38.6	41.8	40.2	45.0
40.0	34.4	35.2	32.0	31.0	31.4	28.4	31.6	30.6	35.0
45.0	24.8	25.6	22.6	22.4	23.2	20.6	23.8	23.4	27.8
50.0	17.8	18.4	15.6	15.6	16.6	14.4	17.6	17.4	21.8
55.0		12.8	10.0	10.0	11.4	9.4	12.8	12.8	17.0
60.0		8.4	5.6	5.6	7.2	5.4	8.6	8.8	13.2
65.0		4.6	2.0	2.0	3.6		5.2	5.4	9.8
70.0							2.2	2.6	6.8
75.0									4.4
80.0									2.2
SLI - Code	312								
Max. permitted wind speed	to main boom length 110.0 ft = 40 ft/s over main boom length 110.0 ft = 30 ft/s								

\* The above lifting capacity values are not monitored by the SLI.  
The SLI must adjust of the SLI-Code to the corresponding main boom - counterweight version.

\* The telescopable load depends, however, on the angle of the boom and on how well the sliding wear pads between the telescope sections are lubricated.

**3. Boom extension****2 294 860****2 295 040**

	Crane with 132 300 lbs (60,0 t) Counterweight (Stützbasis 28.4 x 28.2 ft)								
	Length of boom extension 33 ft								
	Angle of boom extension 10°								
	Main boom - fixed lengths in ft								
	47.6	63.4	79.2	95.0	110.8	132.9	142.3	164.4	173.9
Tel. sec. I	0.0	0.5	0.5	1.0	1.0	1.0	1.0	1.0	1.0
Tel. sec. II	0.0	0.0	0.5	0.5	1.0	1.0	1.0	1.0	1.0
Tel. sec. III	0.0	0.0	0.0	0.0	0.0	0.7	1.0	1.0	1.0
Tel. sec. IV	0.0	0.0	0.0	0.0	0.0	0.0	0.0	0.7	1.0
Slewing range	360°								
Radius in ft	Lifting capacities in 1000 lbs								
15.0	97.0	102.0							
20.0	85.0	91.0	94.0	96.0					
25.0	77.0	83.0	87.0	88.0	87.0	73.0			
30.0	69.0	76.0	80.0	82.0	82.0	73.0	63.0	45.0	39.2
35.0	63.0	70.0	74.0	77.0	78.0	73.0	63.0	45.0	39.2
40.0	57.0	64.0	69.0	72.0	73.0	72.0	63.0	45.0	39.2
45.0	53.0	59.0	64.0	68.0	69.0	69.0	61.0	43.6	38.2
50.0	49.0	55.0	60.0	64.0	66.0	66.0	58.0	41.0	35.8
55.0	45.0	52.0	57.0	60.0	63.0	63.0	54.0	38.6	33.8
60.0	42.6	49.0	54.0	57.0	60.0	59.0	51.0	36.6	32.0
65.0	40.2	46.0	51.0	55.0	57.0	55.0	49.0	34.8	30.4
70.0		43.8	49.0	52.0	54.0	52.0	47.0	33.4	29.2
75.0		42.2	46.0	50.0	51.0	48.0	45.0	32.0	28.0
80.0		40.6	44.0	47.0	46.0	44.0	42.8	31.0	27.0
85.0		38.8	42.4	42.8	41.2	41.6	40.0	30.0	26.2
90.0			40.2	38.0	36.6	38.0	37.6	29.2	25.4
95.0			36.0	34.0	32.4	33.8	34.2	28.4	24.6
100.0				30.4	28.8	30.2	30.6	27.8	24.2
105.0				27.0	25.6	27.0	27.2	27.2	23.6
110.0				24.0	22.6	24.0	24.4	26.4	23.2
115.0					20.0	21.4	21.8	23.8	22.8
120.0					17.6	19.0	19.4	21.4	21.8
125.0					15.4	16.8	17.2	19.2	19.6
130.0					13.4	14.8	15.2	17.2	17.6
140.0						11.2	11.6	13.6	14.2
150.0						8.2	8.6	10.6	11.0
160.0							5.8	7.8	8.4
170.0								5.6	6.0
180.0								3.4	4.0
190.0									2.2
SLI - Code	640								
Max. permitted wind speed	30 ft/s								

2 294 873

2 295 053

Crane with 132 300 lbs (60,0 t) Counterweight (Stützbasis 28.4 x 28.2 ft)									
Length of boom extension 102 ft									
Angle of boom extension 25°									
Main boom - fixed lengths in ft									
	47.6	63.4	79.2	95.0	110.8	132.9	142.3	164.4	173.9
Tel. sec. I	0.0	0.5	0.5	1.0	1.0	1.0	1.0	1.0	1.0
Tel. sec. II	0.0	0.0	0.5	0.5	1.0	1.0	1.0	1.0	1.0
Tel. sec. III	0.0	0.0	0.0	0.0	0.0	0.7	1.0	1.0	1.0
Tel. sec. IV	0.0	0.0	0.0	0.0	0.0	0.0	0.0	0.7	1.0
Slewing range	360°								
Radius in ft	Lifting capacities in 1000 lbs								
65.0	15.6	16.0							
70.0	14.6	15.0	15.4	15.6					
75.0	13.8	14.4	14.6	15.0	15.0				
80.0	13.0	13.6	14.0	14.4	14.4	14.6	14.6		
85.0	12.4	13.0	13.4	13.8	14.0	14.0	14.0		
90.0	11.8	12.4	12.8	13.2	13.4	13.6	13.6	12.0	10.8
95.0	11.2	11.8	12.4	12.8	13.0	13.2	13.2	11.8	10.6
100.0	10.8	11.4	11.8	12.2	12.6	12.8	12.8	11.6	10.4
105.0	10.2	11.0	11.4	11.8	12.2	12.4	12.4	11.4	10.2
110.0	9.8	10.4	11.0	11.4	11.8	12.0	12.2	11.2	10.2
115.0	9.4	10.0	10.6	11.0	11.4	11.6	11.8	11.0	10.0
120.0	9.0	9.6	10.2	10.6	11.0	11.4	11.4	11.0	9.8
125.0	8.8	9.4	10.0	10.4	10.8	11.0	11.2	10.8	9.8
130.0	8.4	9.0	9.6	10.0	10.4	10.8	10.8	10.4	9.8
135.0		8.8	9.2	9.8	10.2	10.6	10.6	10.2	9.6
140.0		8.6	9.0	9.4	9.8	10.2	10.4	9.8	9.6
145.0			8.8	9.2	9.6	10.0	10.2	9.6	9.6
150.0			8.6	9.0	9.4	9.8	9.8	9.4	9.6
155.0			8.4	8.8	9.2	9.6	9.6	9.0	9.6
160.0				8.6	9.0	9.4	9.4	8.8	9.6
165.0				8.4	8.8	9.2	9.2	8.6	9.4
170.0				8.4	8.6	9.0	9.2	8.4	9.0
175.0				8.4	8.4	8.8	9.0	8.2	8.8
180.0					8.2	8.4	8.4	8.0	8.4
185.0					6.8	7.2	7.2	7.8	8.2
190.0					5.6	6.2	6.2	7.2	7.4
195.0						5.0	5.2	6.2	6.4
200.0						4.0	4.2	5.2	5.4
210.0							2.2	3.4	3.6
215.0								2.4	2.8
SLI - Code	653								
Max. permitted wind speed	30 ft/s								

2 294 895

2 295 075

	Crane with 88 200 lbs (40,0 t) Counterweight (Stützbasis 28.4 x 28.2 ft)								
	Length of boom extension 171 ft								
	Angle of boom extension 10°								
	Main boom - fixed lengths in ft								
	47.6	63.4	79.2	95.0	110.8	132.9	142.3	164.4	173.9
Tel. sec. I	0.0	0.5	0.5	1.0	1.0	1.0	1.0	1.0	1.0
Tel. sec. II	0.0	0.0	0.5	0.5	1.0	1.0	1.0	1.0	1.0
Tel. sec. III	0.0	0.0	0.0	0.0	0.0	0.7	1.0	1.0	1.0
Tel. sec. IV	0.0	0.0	0.0	0.0	0.0	0.0	0.0	0.7	1.0
Slewing range	360°								
Radius in ft	Lifting capacities in 1000 lbs								
60.0	11.8								
65.0	11.0								
70.0	10.2	10.4	10.6	10.6					
75.0	9.4	9.6	9.8	10.0	9.8	8.6			
80.0	8.6	9.0	9.2	9.4	9.4	8.4	7.6		
85.0	8.0	8.4	8.6	8.8	8.8	8.0	7.4		
90.0	7.4	7.8	8.0	8.2	8.4	7.8	7.2		
95.0	6.8	7.2	7.6	7.8	7.8	7.6	7.0	5.6	5.0
100.0	6.4	6.8	7.0	7.2	7.4	7.4	6.8	5.4	5.0
105.0	6.0	6.2	6.6	6.8	7.0	7.2	6.6	5.4	4.8
110.0	5.4	5.8	6.2	6.4	6.6	6.8	6.6	5.2	4.8
115.0	5.0	5.4	5.8	6.0	6.2	6.4	6.4	5.2	4.6
120.0	4.8	5.2	5.4	5.8	6.0	6.2	6.2	5.0	4.6
125.0	4.4	4.8	5.2	5.4	5.6	5.8	5.8	5.0	4.6
130.0	4.0	4.4	4.8	5.0	5.2	5.6	5.6	4.8	4.4
135.0	3.8	4.2	4.4	4.8	5.0	5.2	5.2	4.8	4.4
140.0	3.4	3.8	4.2	4.4	4.8	5.0	5.0	4.8	4.4
145.0	3.2	3.6	4.0	4.2	4.4	4.8	4.8	4.6	4.2
150.0	3.0	3.4	3.6	4.0	4.2	4.4	4.4	4.4	4.2
155.0	2.6	3.0	3.4	3.6	3.8	4.2	4.2	4.2	4.0
160.0	2.4	2.8	3.2	3.4	3.6	3.8	4.0	3.8	3.8
165.0	2.2	2.6	2.8	3.2	3.4	3.6	3.6	3.6	3.6
170.0	2.0	2.4	2.6	2.8	3.0	3.4	3.4	3.4	3.4
175.0		2.2	2.4	2.6	2.8	3.2	3.2	3.2	3.2
180.0			2.2	2.4	2.6	3.0	3.0	3.0	3.0
185.0				2.2	2.4	2.8	2.8	2.8	2.8
190.0					2.2	2.4	2.0	2.0	2.0
SLI - Code	546								
Max. permitted wind speed	30 ft/s								

2 294 902

2 295 082

Crane with 57 300 lbs (26,0 t) Counterweight (Stützbasis 28.4 x 28.2 ft)									
Length of boom extension 79 ft									
Angle of boom extension 10°									
Main boom - fixed lengths in ft									
	47.6	63.4	79.2	95.0	110.8	132.9	142.3	164.4	173.9
Tel. sec. I	0.0	0.5	0.5	1.0	1.0	1.0	1.0	1.0	1.0
Tel. sec. II	0.0	0.0	0.5	0.5	1.0	1.0	1.0	1.0	1.0
Tel. sec. III	0.0	0.0	0.0	0.0	0.0	0.7	1.0	1.0	1.0
Tel. sec. IV	0.0	0.0	0.0	0.0	0.0	0.0	0.0	0.7	1.0
Slewing range	360°								
Radius in ft	Lifting capacities in 1000 lbs								
30.0	38.6	39.4	40.2						
35.0	35.0	36.4	37.4	37.8	37.2				
40.0	32.0	33.4	34.6	35.2	35.2	34.6	32.8		
45.0	29.4	31.0	32.2	33.0	33.2	33.0	31.0	23.0	
50.0	27.2	28.8	30.2	31.0	31.4	31.4	29.2	21.8	19.4
55.0	24.8	26.8	28.2	29.2	29.8	30.0	27.8	20.6	18.4
60.0	22.6	25.0	26.6	27.6	28.2	28.6	26.4	19.8	17.6
65.0	21.0	22.8	25.0	26.2	26.8	27.4	25.2	18.8	16.8
70.0	20.0	21.6	23.6	24.8	25.4	26.0	24.2	18.2	16.2
75.0	18.8	20.4	22.2	23.2	24.0	24.8	23.4	17.4	15.6
80.0	17.6	19.2	20.8	21.8	22.6	22.6	22.0	17.0	15.2
85.0	16.8	18.2	19.6	20.8	21.0	19.6	19.0	16.4	14.6
90.0	16.0	17.4	18.8	20.0	18.2	16.8	16.4	16.0	14.2
95.0	15.2	16.6	18.0	18.6	15.6	14.4	14.0	14.0	14.0
100.0	14.4	15.8	17.2	16.2	13.2	12.2	11.8	12.0	12.0
105.0	13.8	15.2	16.6	14.0	11.2	10.2	9.8	10.2	10.0
110.0	13.4	14.6	15.2	12.0	9.4	8.4	8.0	8.4	8.4
115.0		14.0	13.2	10.2	7.6	6.6	6.4	6.8	6.8
120.0		13.0	11.4	8.6	6.0	5.2	4.8	5.4	5.2
125.0		11.2	9.6	7.2	4.6	3.8	3.4	4.0	4.0
130.0		9.6	8.2	5.8	3.2	2.4	2.2	2.6	2.8
135.0			6.8	4.4					
140.0			5.4	3.2					
145.0				2.2					
SLI - Code	442								
Max. permitted wind speed	30 ft/s								

2 294 915

2 295 095

Crane with 57 300 lbs (26,0 t) Counterweight (Stützbasis 28.4 x 28.2 ft)									
Length of boom extension 148 ft									
Angle of boom extension 25°									
Main boom - fixed lengths in ft									
	47.6	63.4	79.2	95.0	110.8	132.9	142.3	164.4	173.9
Tel. sec. I	0.0	0.5	0.5	1.0	1.0	1.0	1.0	1.0	1.0
Tel. sec. II	0.0	0.0	0.5	0.5	1.0	1.0	1.0	1.0	1.0
Tel. sec. III	0.0	0.0	0.0	0.0	0.0	0.7	1.0	1.0	1.0
Tel. sec. IV	0.0	0.0	0.0	0.0	0.0	0.0	0.0	0.7	1.0
Slewing range	360°								
Radius in ft	Lifting capacities in 1000 lbs								
95.0	7.2	7.4							
100.0	6.8	7.0	7.2	7.4	7.4				
105.0	6.4	6.6	6.8	7.0	7.0	7.2			
110.0	6.0	6.4	6.6	6.6	6.8	6.8			
115.0	5.6	6.0	6.2	6.4	6.4	6.6	6.6		
120.0	5.4	5.6	5.8	6.0	6.2	6.4	6.4	6.0	
125.0	5.0	5.4	5.6	5.8	6.0	6.0	6.0	5.8	5.4
130.0	4.8	5.0	5.4	5.6	5.6	5.8	5.8	5.8	5.2
135.0	4.6	4.8	5.0	5.4	5.4	5.6	5.6	5.6	5.2
140.0	4.2	4.6	4.8	5.0	5.2	5.4	5.4	5.4	5.2
145.0	4.0	4.4	4.6	4.8	5.0	5.2	5.2	5.2	5.2
150.0	3.8	4.2	4.4	4.6	4.8	5.0	5.0	5.0	4.8
155.0	3.6	4.0	4.2	4.4	4.6	4.4	4.0	3.8	3.6
160.0	3.4	3.8	4.0	4.2	4.2	3.2	2.8	2.8	2.6
165.0	3.2	3.6	3.8	4.0	3.2	2.2			
170.0	3.0	3.4	3.6	4.0	2.2				
175.0	3.0	3.2	3.6	3.0					
180.0		3.2	3.4	2.2					
185.0		3.0	3.2						
190.0		2.8	2.6						
SLI - Code	455								
Max. permitted wind speed	30 ft/s								

CLICK HERE TO **DOWNLOAD** THE COMPLETE MANUAL

- Thank you very much for reading the preview of the manual.
- You can download the complete manual from: [www.heydownloads.com](http://www.heydownloads.com) by clicking the link below



- Please note: If there is no response to CLICKING the link, please download this PDF first and then click on it.

CLICK HERE TO **DOWNLOAD** THE COMPLETE MANUAL