

Instructions
For
39HR
Operator Display
X-4133

This document is protected under applicable copyright laws to the extent available. Any unauthorized and unlawful reproduction, distribution or other use shall be subject to liability.

© 2004 Bucyrus International, Inc. All rights reserved.

Approved By: _____

Approved Date:
Revised Date: September,2007

CLICK HERE TO **DOWNLOAD** THE COMPLETE MANUAL

- Thank you very much for reading the preview of the manual.
- You can download the complete manual from: www.heydownloads.com by clicking the link below



- Please note: If there is no response to CLICKING the link, please download this PDF first and then click on it.

CLICK HERE TO **DOWNLOAD** THE COMPLETE MANUAL



Figure 5 – Password Screen

In order for the secure screen to open up, a specific code must be entered using this keypad. The user enters the password with the pop-up keypad. If the code is correct, the desired screen will appear. If the code is not correct, the Password Entry window will remain with a message indicating an invalid password. If the user decides not to enter the correct password, he can return to the previous screen by pressing the "X" button in the upper right corner.

WARNING: Since all machines are shipped with the same set of default passwords, mine supervision should change these passwords as soon as possible to prevent unauthorized screen accesses or updates.

Leveling Screen

The Leveling Screen is accessible from the Status Screen. It is located on the left side and is the middle button in the group of three. See Figure 9. It provides more detail on the machine's level and jack status. This screen shows the top view of the drill with information presented on jack operation, tilt status, and machine operational status. The information is presented in several forms:

1. Graphical Gauges
2. Numeric Displays
3. Multi-state Indicators

Each element on the Leveling Screen will be discussed in detail in the following subsections. As on most screens, the current time is shown in the upper right corner. Refer to the Setup section of this manual for information on changing the time format.

This screen will come up automatically whenever the operator activates one of the three jack control switches.

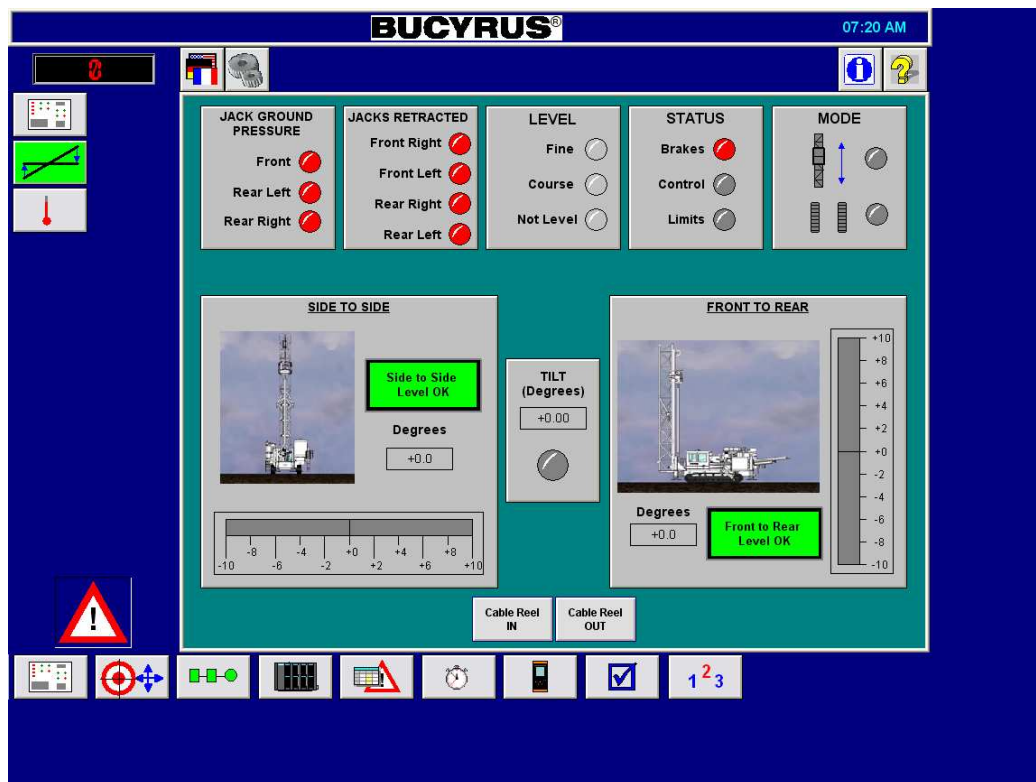


Figure 9 – Leveling Screen

Front to Rear Level Graph

The Front to Rear Level graph is located on the bottom right of the screen. This gives a relative indication of the machine's front/rear tilt angle. A moving indicator bar shows the approximate angle. When the indicator is on a particular side that means that the side it is on is low. When the drill is level,

TEST AND CONTROL SYSTEM STATUS SCREENS

Overview

The topics discussed in this section are used for machine testing, troubleshooting, and maintenance. Operators will not normally access these screens unless assisting in one of these procedures.

Collectively, these screens allow access to a significant amount of machine information pertaining to input/output status, internal setting values, PLC operational status, predefined test modes, and machine status.

Field Tests

The Field Tests screen is accessible from the Main Menu. See Figure 14. It is used for field testing of the electrical, hydraulic, and mechanical subsystems. The tests on this screen allow certain protective circuits to be bypassed for test purposes.



Figure 14 – Field Tests Screen

Access to this screen is password controlled. See the Security section for more information on password protection.

View Voltage/Current – View Units Button

This button is located on the left side of the screen, labeled RAW, and toggles the display between showing the voltage or current measured at the card's terminals and the raw signal in the PLC. Changing the view on one screen will change it on all screens that use this feature.

Timer/Counter Values Screen

This screen is accessible from the Main Menu. See Figure 22. It allows the user to view the preset and time values of the timers and the current count of the counters in the PLC. In order to use this screen, it is necessary to know the timer or counter address, which can be found in the PLC software documentation.

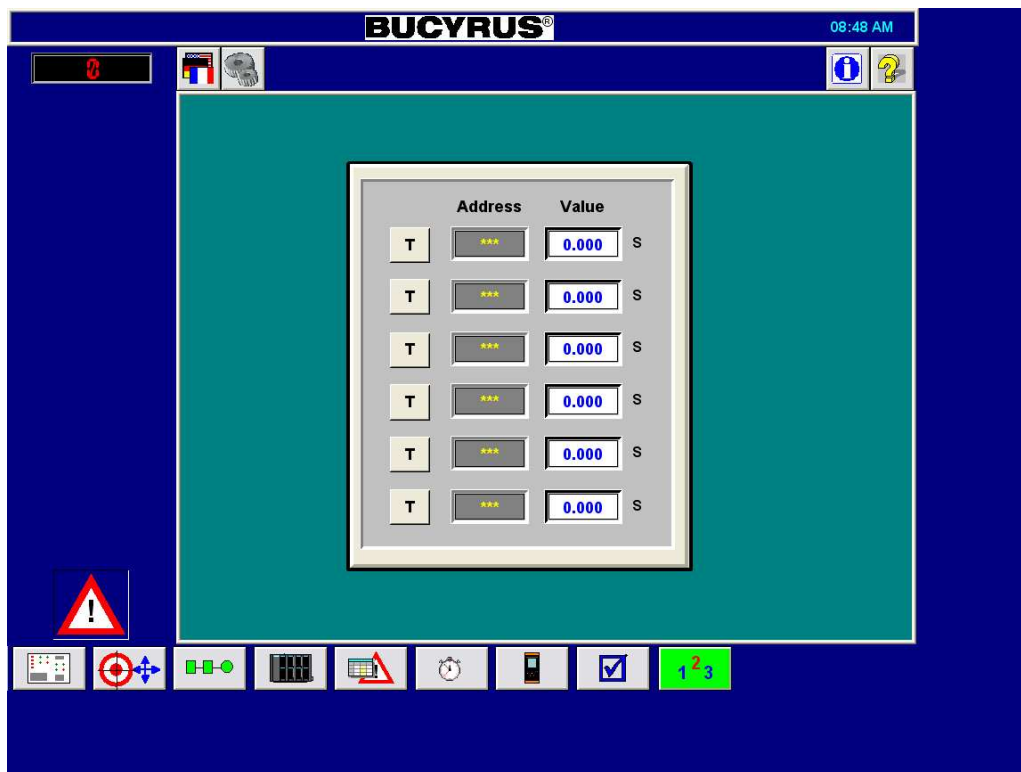


Figure 22 – Timer/Counter Values Screen

Entering Addresses

Once the address is known, perform the following steps to display the values.

1. Touch the Timer/Counter box in the first column to select either "T" for Timer or "C" for Counter. These values toggle back and forth.
2. Enter the address number in the second box. This will completely specify the desired timer or counter.

For timers, the Value is the current count of the timer in the same units. It will be 0 if the timer is done or has not yet started. For counters, only the Value is returned. This is the current count of the timer.

CLICK HERE TO **DOWNLOAD** THE COMPLETE MANUAL

- Thank you very much for reading the preview of the manual.
- You can download the complete manual from: www.heydownloads.com by clicking the link below



- Please note: If there is no response to CLICKING the link, please download this PDF first and then click on it.

CLICK HERE TO **DOWNLOAD** THE COMPLETE MANUAL