



INSTALLATION INSTRUCTIONS

KG0SP874-00

MULTI-PURPOSE CIRCUIT PEDAL KIT (ELECTRO-MAGNETIC RELIEF)

APPROXIMATE INSTALLATION TIME: 32.0 hours

CLICK HERE TO **DOWNLOAD** THE COMPLETE MANUAL

- Thank you very much for reading the preview of the manual.
- You can download the complete manual from: www.heydownloads.com by clicking the link below



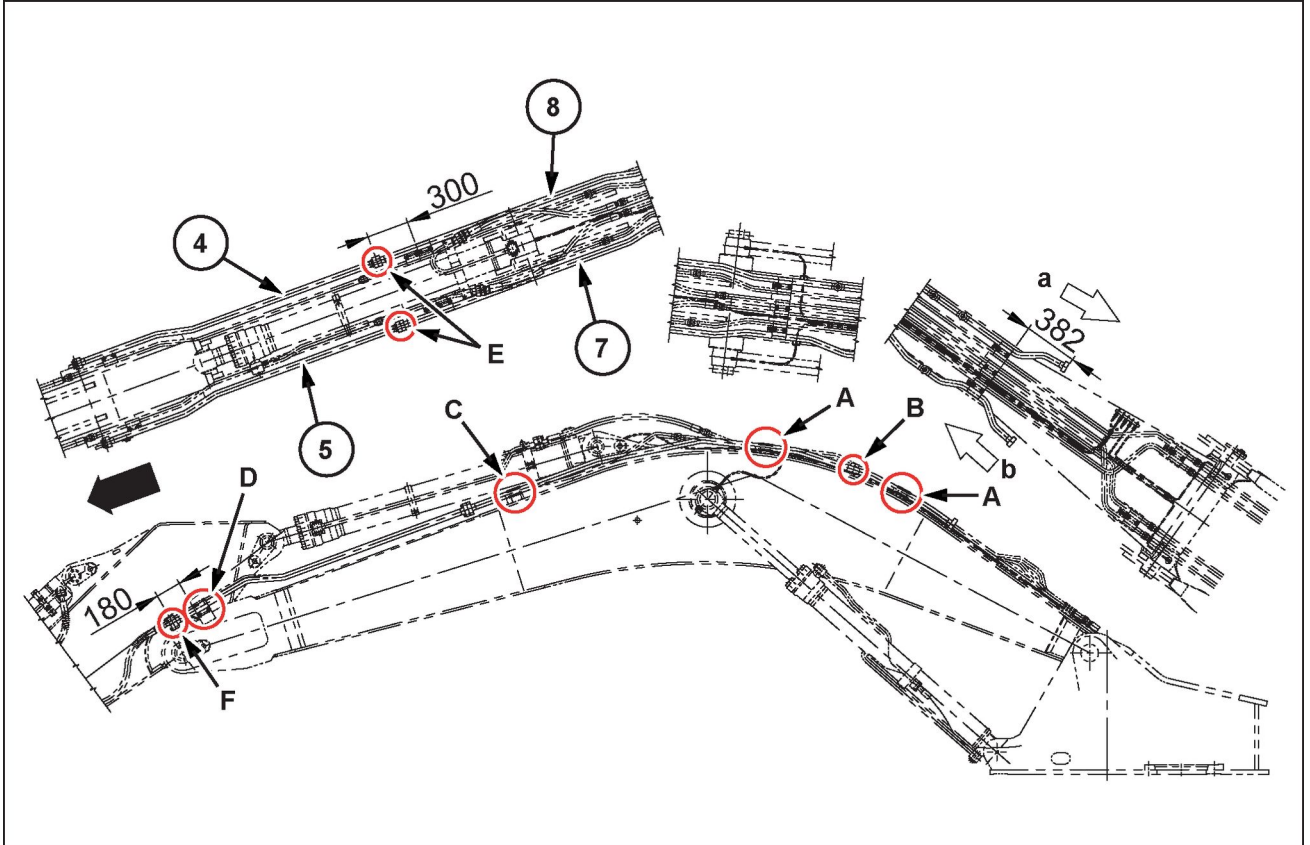
- Please note: If there is no response to CLICKING the link, please download this PDF first and then click on it.

CLICK HERE TO **DOWNLOAD** THE COMPLETE MANUAL

3 - ASSEMBLY

MULTI-PURPOSE CIRCUIT PEDAL KIT (ELECTRO-MAGNETIC RELIEF)

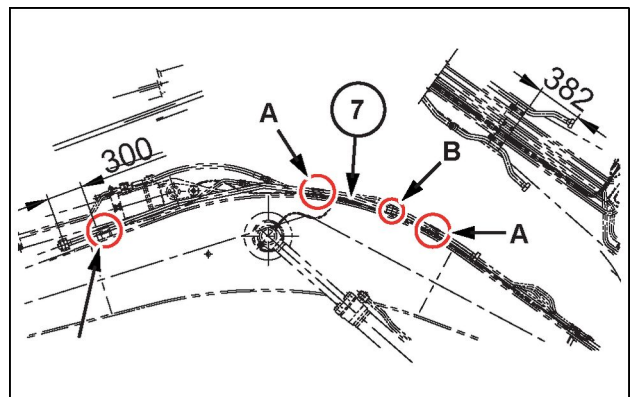
Boom line installation



SML15CEX9808FB 1

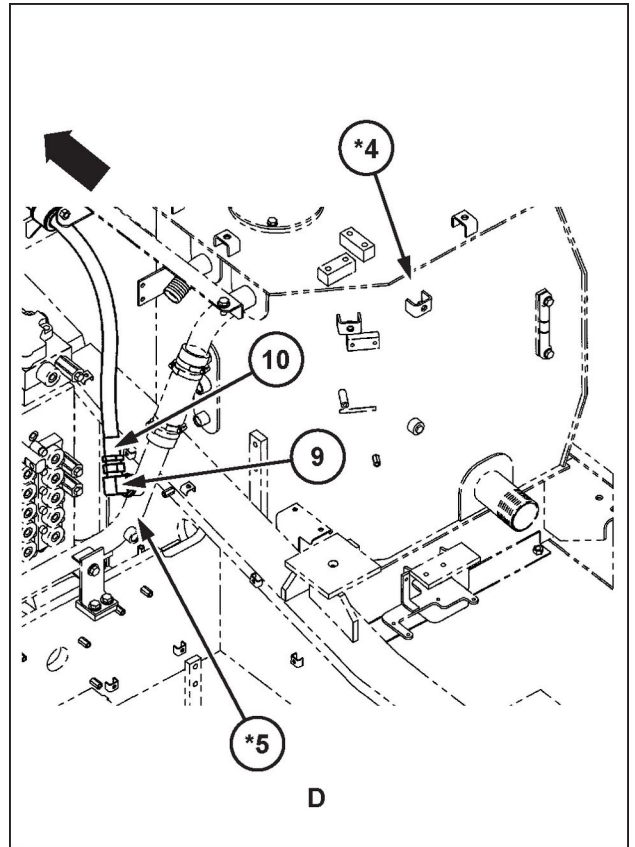
Line Assemblies (6) (7)

1. Set the line assembly (left) (7) on the boom.



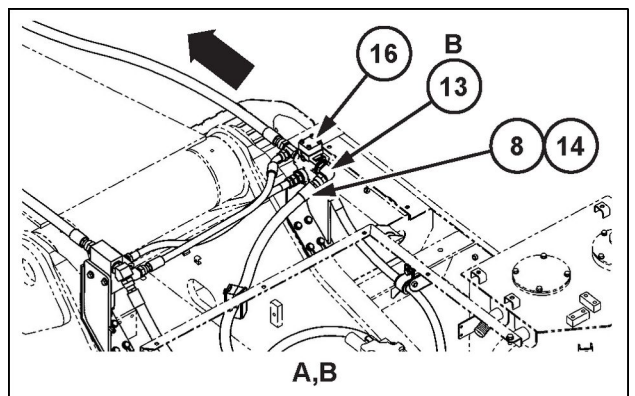
SML15CEXX28AB 2

6. Install the elbow (9) on the hydraulic oil reservoir (*4) return and oil cooler line (*5) and then connect the hydraulic hose (10)



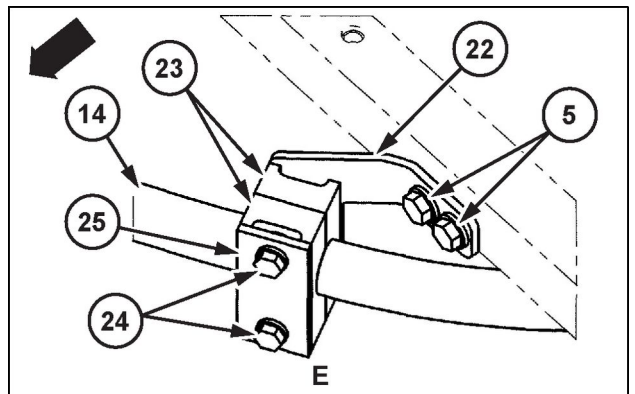
SMIL15CEXXX85BB 11

7. Install the elbow (13) on the three-direction valve (16) B port.
Set the O-ring (8) on the elbow (13) and connect the hydraulic hose (14).



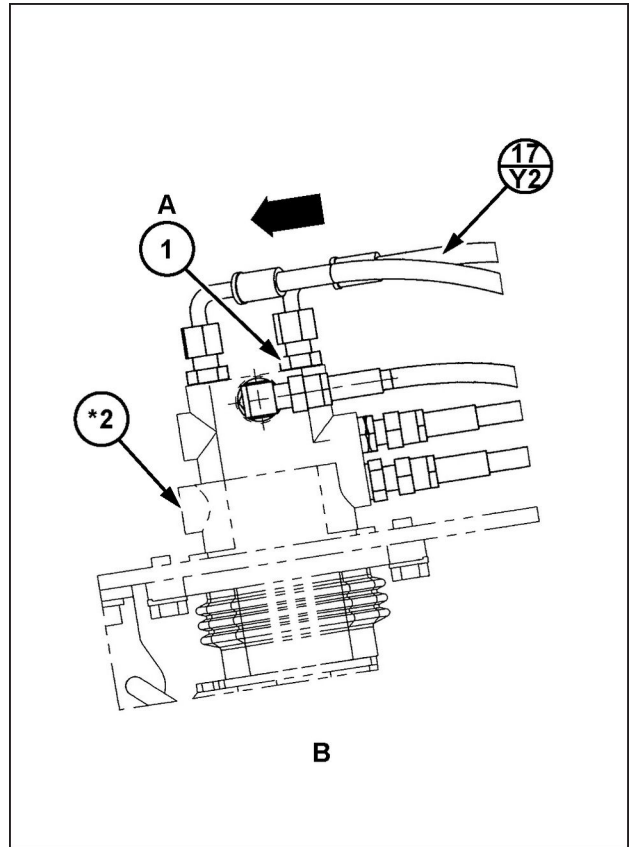
SMIL15CEXXX86AB 12

8. Install the bracket (22) on the housing frame with the two sems bolts (5).
Sandwich the hydraulic hose (14) with the two hose clamps (23), and then install the plate (25) with the two sems bolts (24) in order to fasten the clamps.



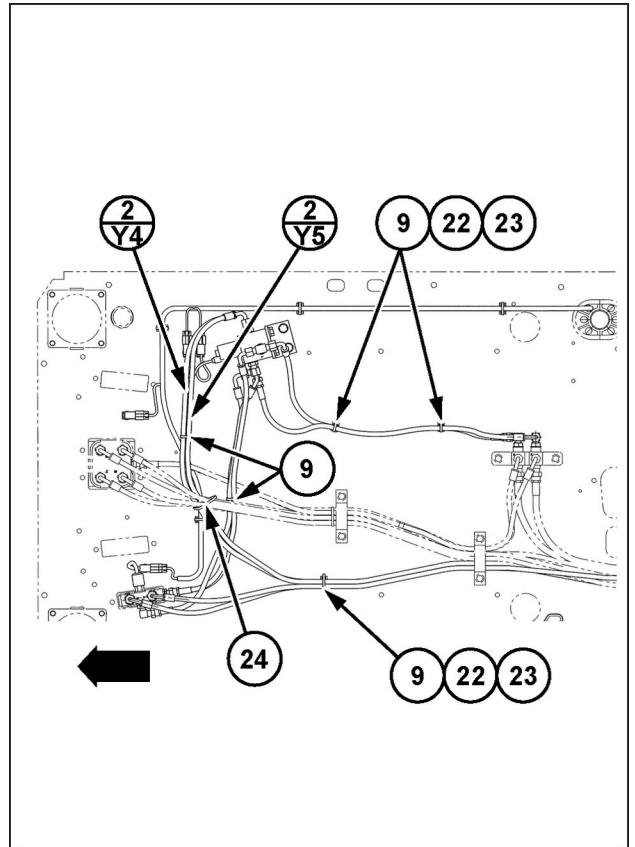
SMIL15CEXXX87AB 13

6. Install the hose adapter **(1)** on the remote control valve **(*2)** A port.



SML15CEXX100BB 9

23. Fasten the assembly hose at three locations with one mount clamp (**23**) each, one Phillips pan head screw (**22**) each, and one wire band (**9**) each as in the diagram. Position one fastening location **900 mm** away from the assembly hose (**2**) (**Y4**) mouthpiece and **910 mm** away from the assembly hose (**2**) (**Y5**) mouthpiece. Fasten the assembly hose with one wire band (**24**) and two wire bands (**9**). Tighten the wire band (**24**) together with the pilot control line (***8**).



SMIL15CEXX519BB 27



安装说明

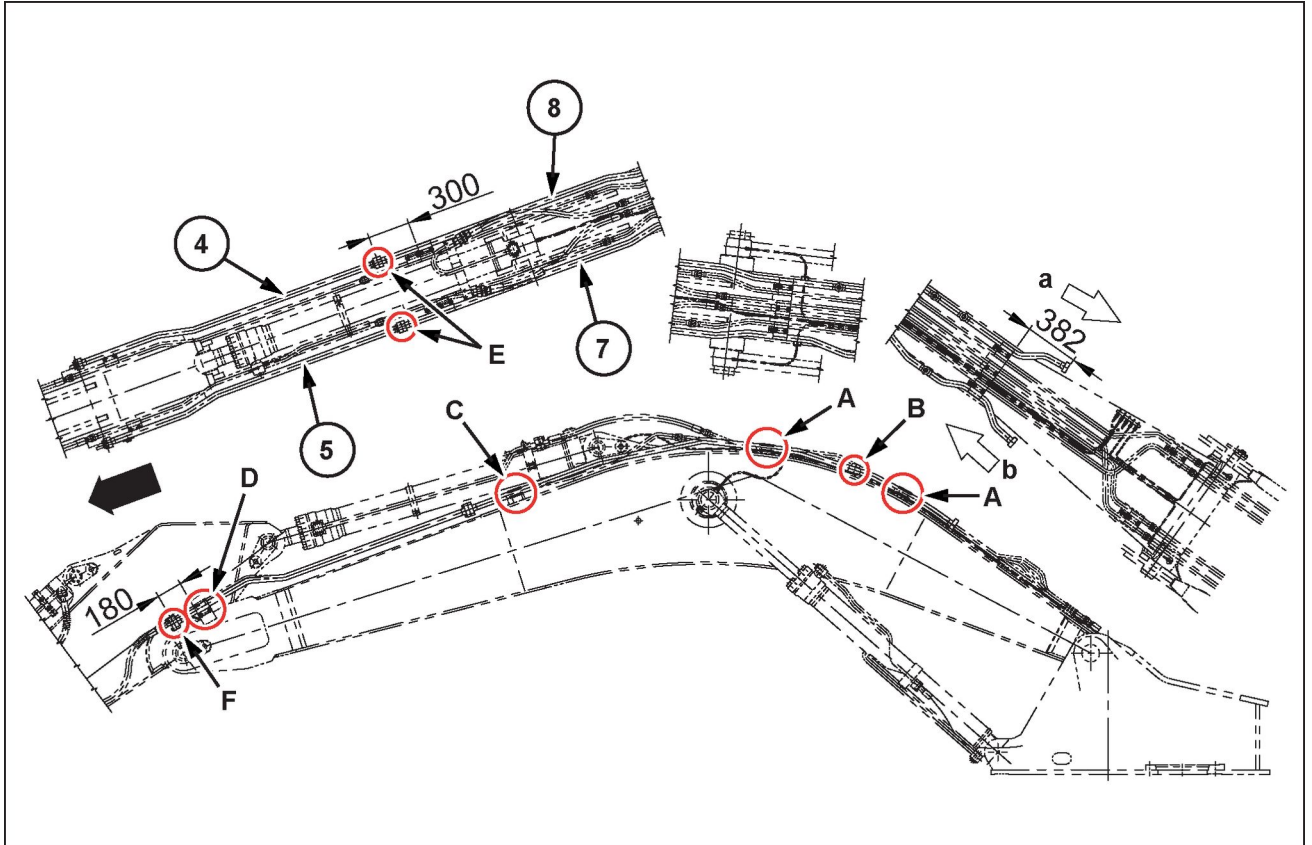
KG0SP874-00
多功能回路踏板套件 (电磁卸压)

大致安装时间 : 32.0 小时

3 - 装配

多功能回路踏板套件 (电磁卸压)

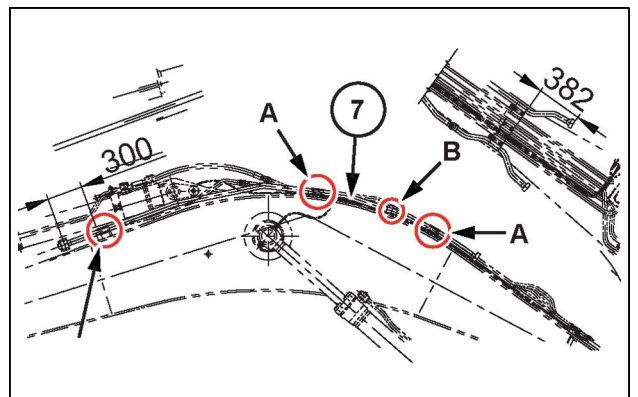
安装臂杆管路



SMIL15CEX9808FB 1

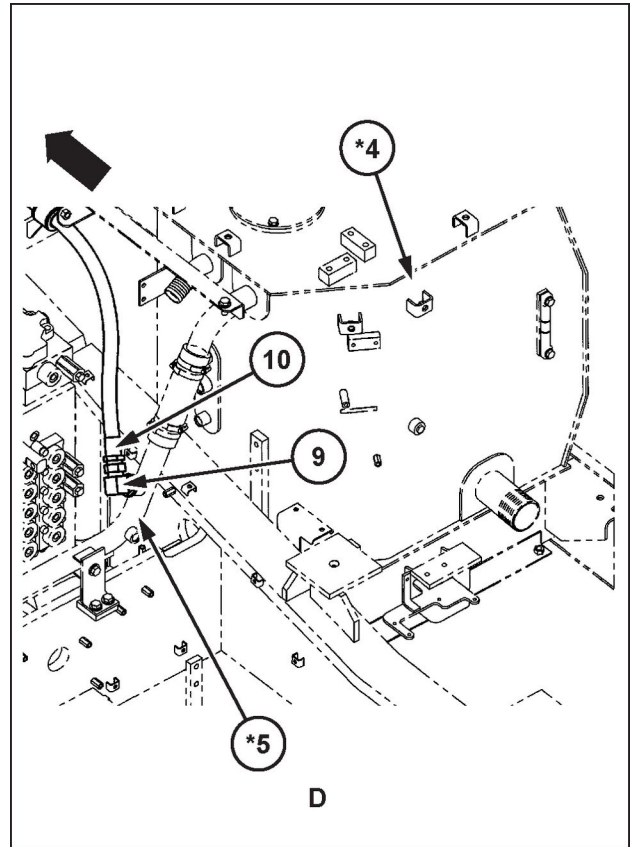
管路总成 (6) (7)

1. 在动臂上固定管路总成 (左) (7)。



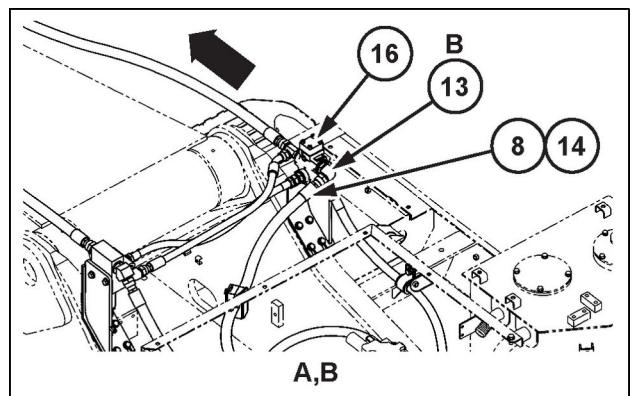
SMIL15CEXXX28AB 2

6. 将弯管 (9) 安装在液压储罐 (*4) 回路和油冷却器管路 (*5) 上，然后连接液压软管 (10)。



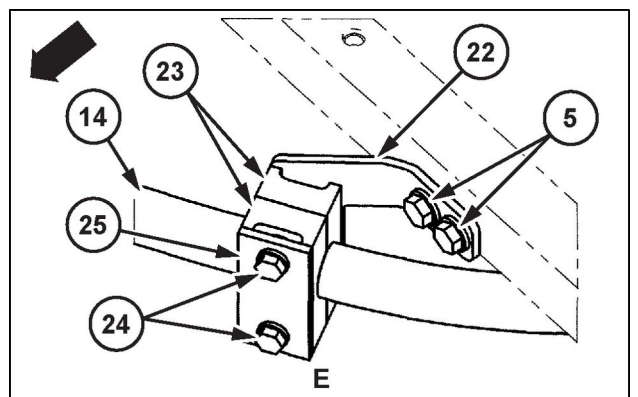
SMIL15CEXXX85BB 11

7. 在三向阀 (16) B 端口上安装弯管 (13)。将 O 形密封圈 (8) 固定在弯管 (13) 上，并连接液压软管 (14)。



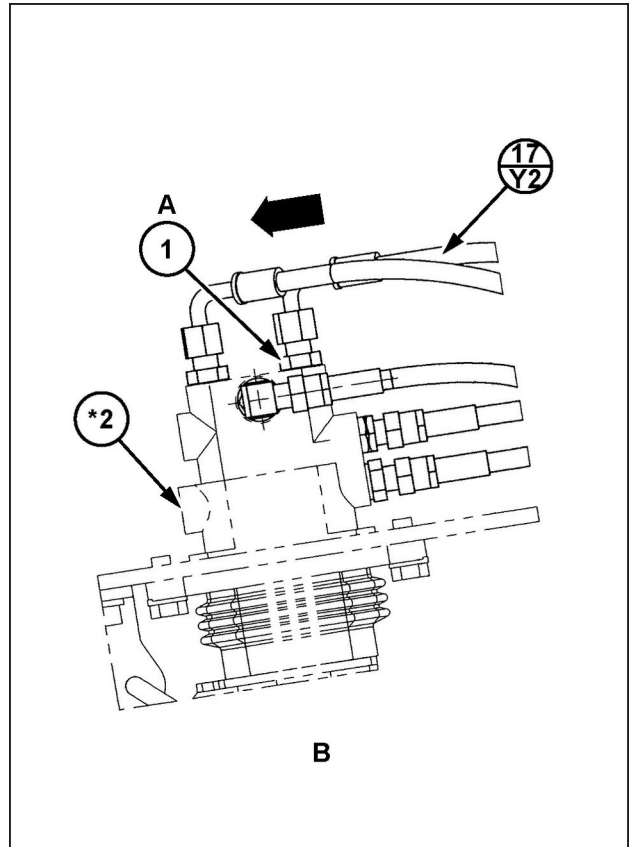
SMIL15CEXXX86AB 12

8. 用两颗 sems 螺栓 (5) 在壳体机架上安装支架 (22)。用两个软管夹 (23) 夹住液压软管 (14)，然后用两颗 sems 螺栓 (24) 安装板 (25) 以紧固夹子。



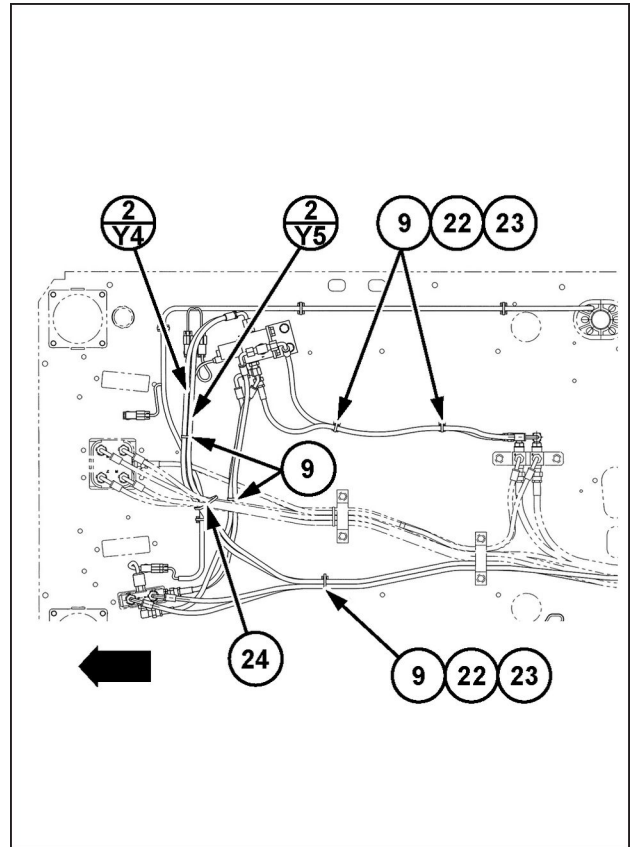
SMIL15CEXXX87AB 13

6. 在远程控制阀 (*2) A 端口上安装软管接头 (1)。



SML15CEXX100BB 9

23. 用一个安装夹具 (23) 和一颗平头十字槽头螺丝 (22) 以及一根线带 (9) 如图所示在三个位置分别紧固装配软管。
- 将紧固位置中的一个设在离装配软管 (2) (Y4) 端口 900 mm 并离装配软管 (2) (Y5) 端口 910 mm 的位置。
- 用一根线带 (24) 和两根线带 (9) 紧固装配软管。
- 将线带 (24) 和先导控制管路 (*8) 紧固到一起。



SMIL15CEXX519BB 27

CLICK HERE TO **DOWNLOAD** THE COMPLETE MANUAL

- Thank you very much for reading the preview of the manual.
- You can download the complete manual from: www.heydownloads.com by clicking the link below



- Please note: If there is no response to CLICKING the link, please download this PDF first and then click on it.

CLICK HERE TO **DOWNLOAD** THE COMPLETE MANUAL