



INSTALLATION INSTRUCTIONS

**KG1BP098-00
MULTI-PURPOSE CIRCUIT PEDAL KIT**

APPROXIMATE INSTALLATION TIME: 32.0 hours

CLICK HERE TO **DOWNLOAD** THE COMPLETE MANUAL

- Thank you very much for reading the preview of the manual.
- You can download the complete manual from: www.heydownloads.com by clicking the link below



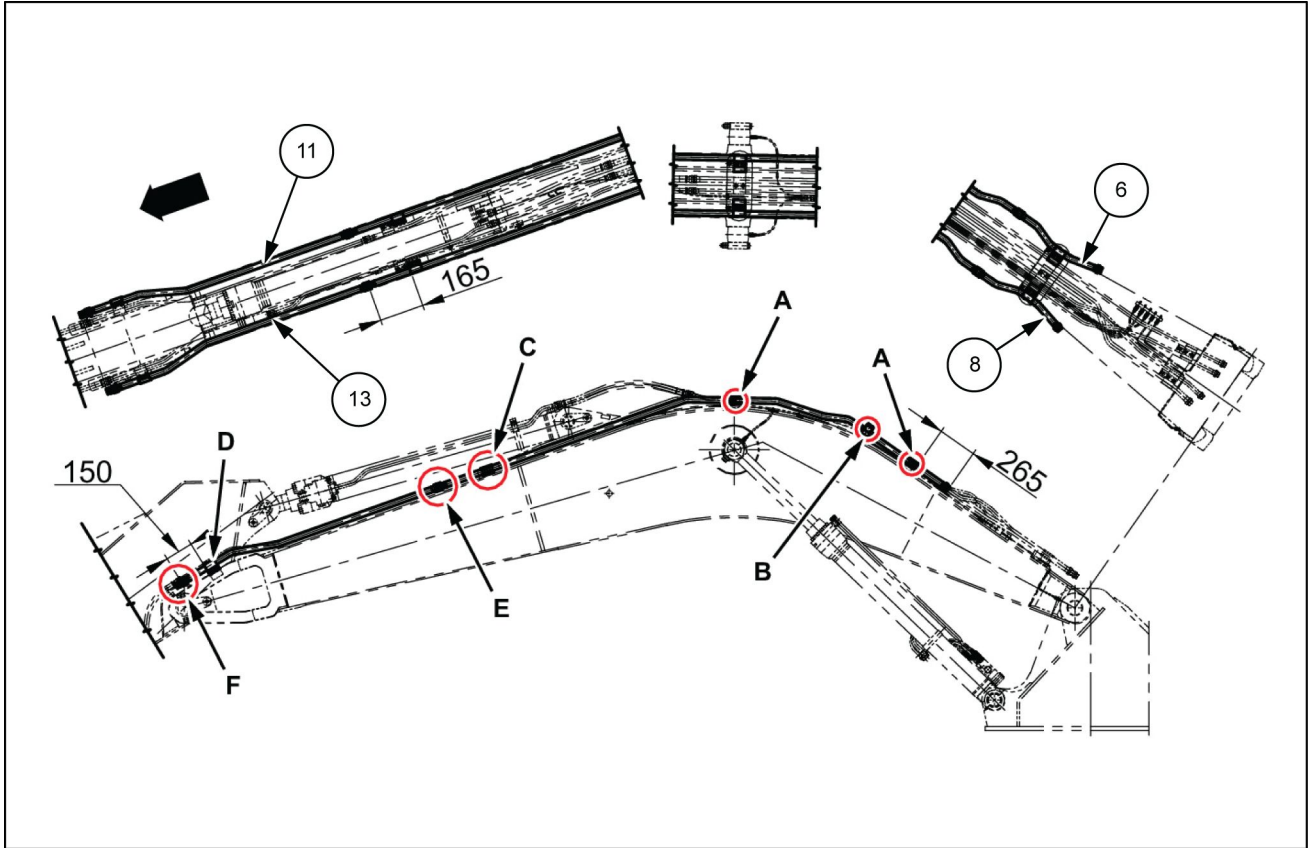
- Please note: If there is no response to CLICKING the link, please download this PDF first and then click on it.

CLICK HERE TO **DOWNLOAD** THE COMPLETE MANUAL

3 - ASSEMBLY

MULTI-PURPOSE CIRCUIT PEDAL KIT

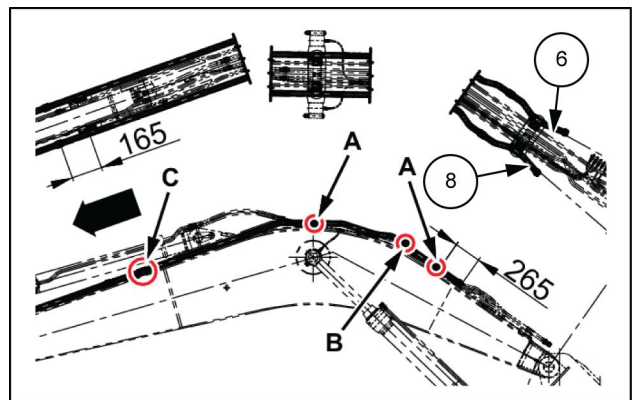
Boom line installation



SMIL13II00604FB 1

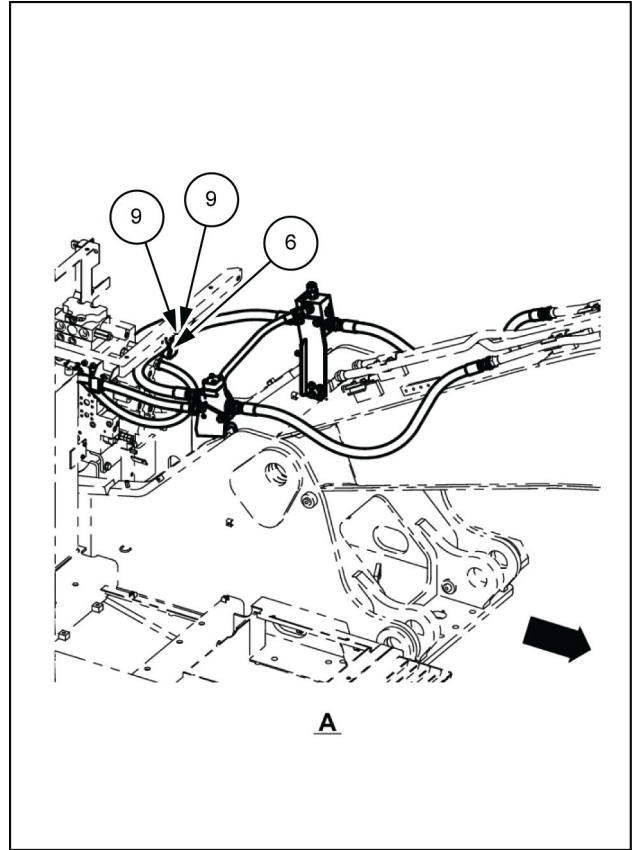
Line assemblies (6) and (8)

1. Set the line assembly (left) (8) on the boom.



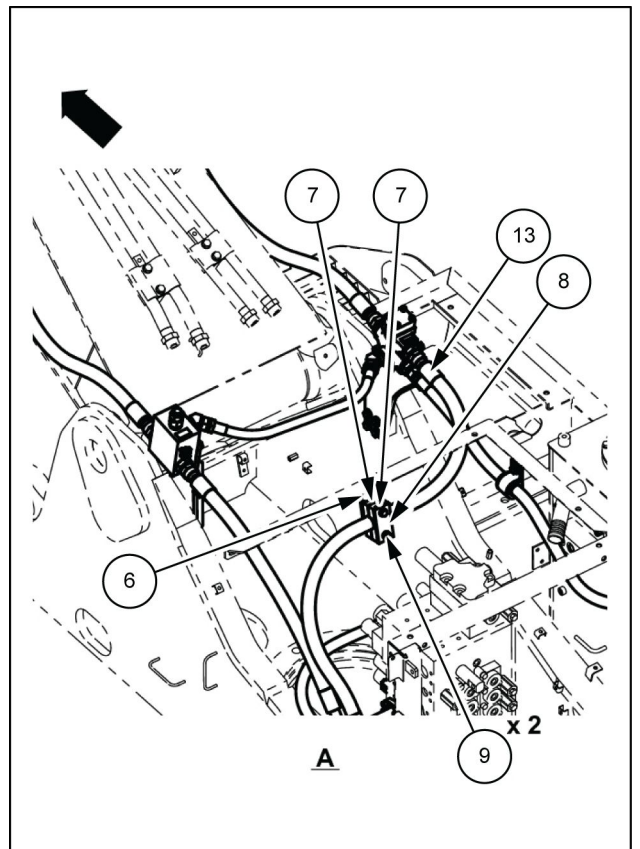
SMIL13II00605AB 2

8. Install the bracket (6) on the housing frame with the 2 sems bolts (9).



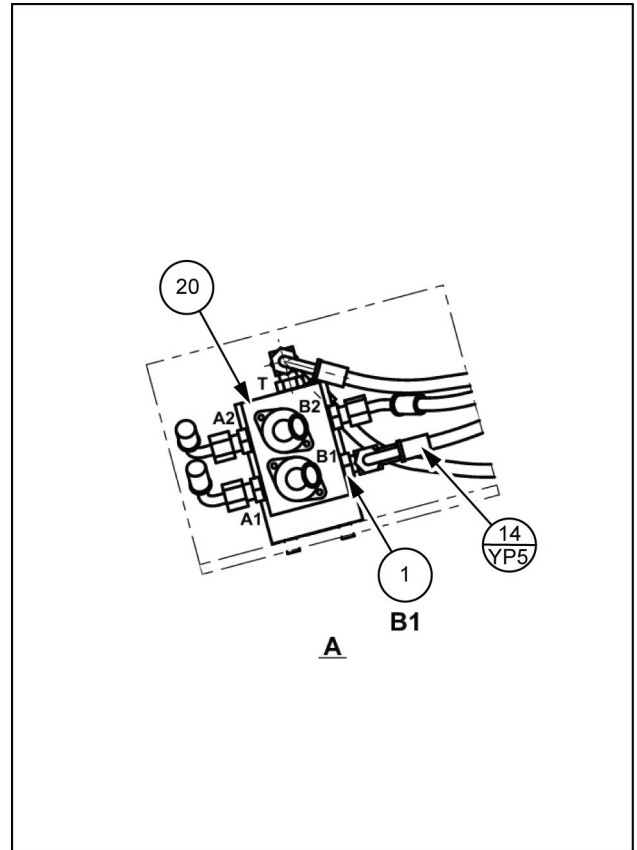
SMIL131I00625BB 13

9. Sandwich the hydraulic hose (13) with the 2 hose clamps (7), and then install the plate (8) with the 2 sems bolts (9) in order to fasten the clamps.



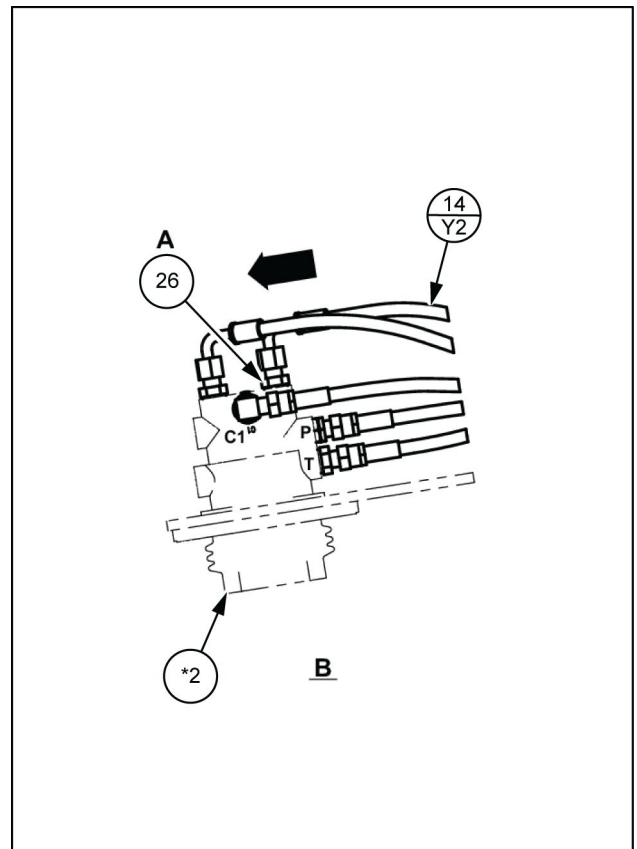
SMIL131I00626BB 14

5. Install the tee (1) on the solenoid valve (20) B1 port. Connect the remote control valve (*2) P port and solenoid valve (20) B1 port with the assembly hose (14/YP5).



SMIL131I00641BB 8

6. Install the hose adapter (26) on the remote control valve (*2) A port.



SMIL131I00642BB 9

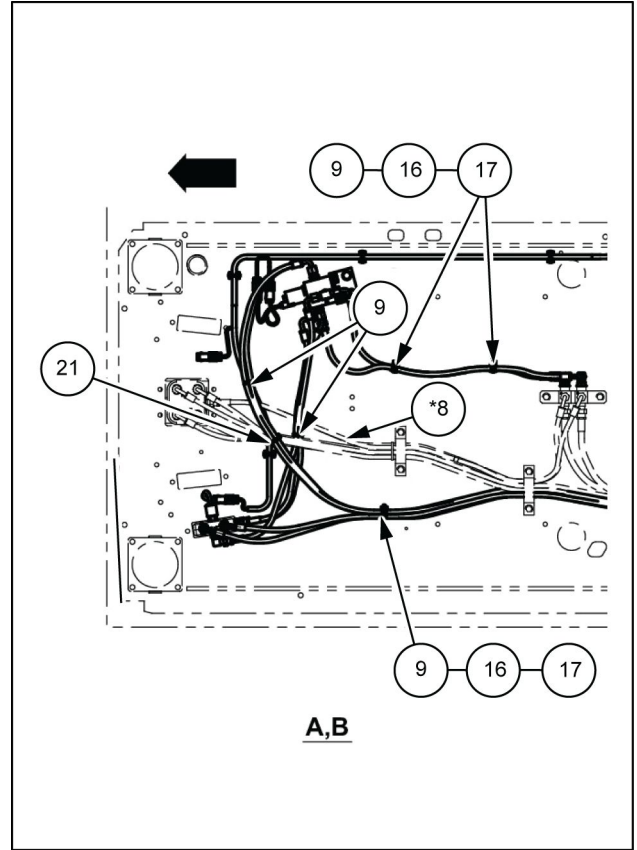
24. As shown in the diagram, fasten in 3 locations with the mount clamps (16), Phillips pan head screws (17) and wire bands (9).

- Position 1 fastening location **880 mm (34.65 in)** away from the assembly hose (12/Y4) mouthpiece and **910 mm (35.83 in)** away from the assembly hose (12/Y5) mouthpiece.

Fasten the assembly hoses (12/Y4) and (12/Y5) with the wire bands (9) and (21).

- Fasten the wire band (21) together with the pilot control line (*8).

Fasten the assembly hoses (14/YP5) and (14/YT5) with the wire bands (9).





INSTALLATIONSANWEISUNG

KG1BP098-00
MEHRZWECKKREIS-PEDALSATZ

UNGEFÄHRE EINBAUZEIT: 32.0 Stunden

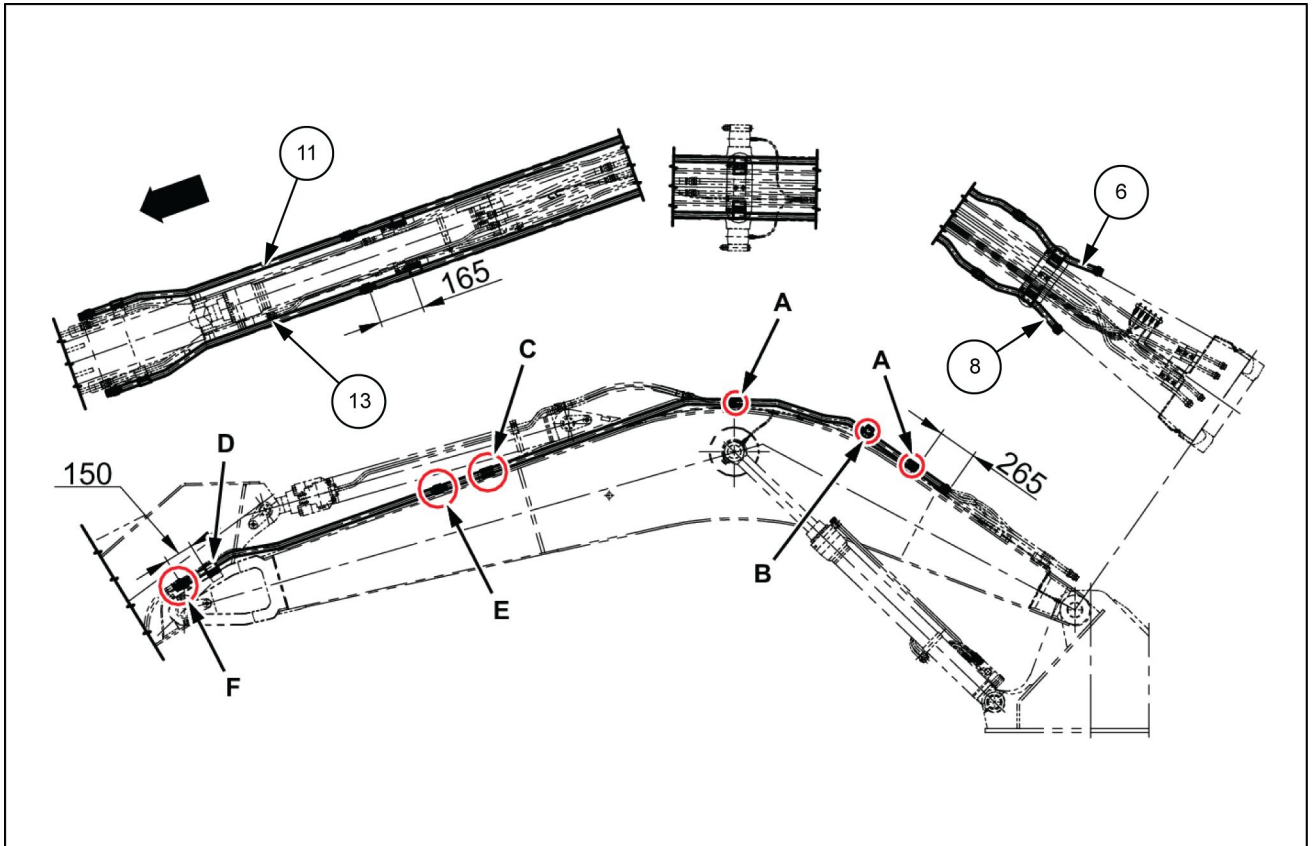
3 - MONTAGE

MEHRZWECKKREIS-PEDALSATZ

Einbau der Auslegerleitung

CX250C

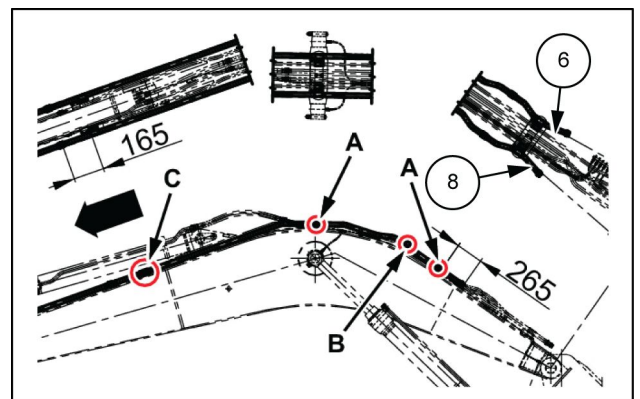
WE



SMIL13II00604FB 1

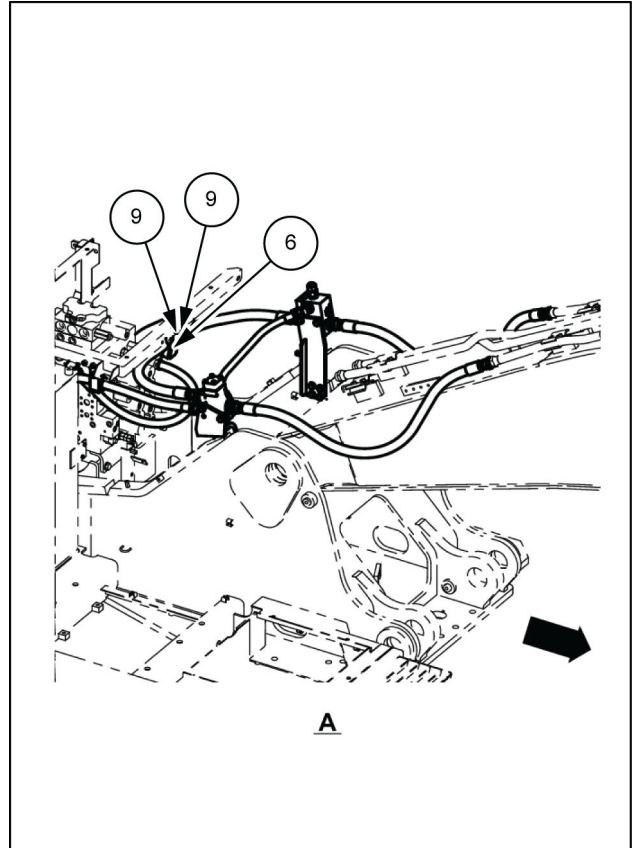
Leitungsbaugruppen (6) und (8)

1. Bringen Sie die Leitungsbaugruppe (links) (8) am Ausleger an.



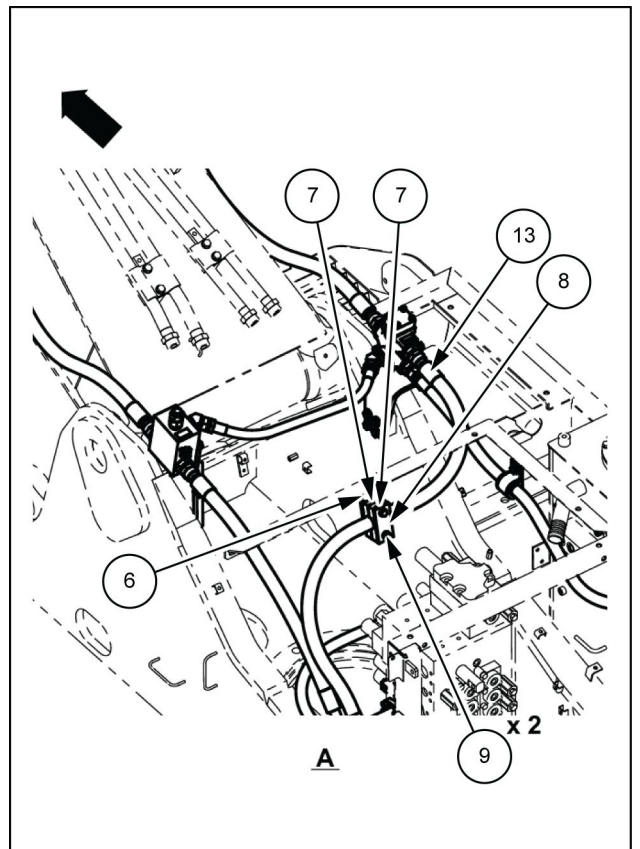
SMIL13II00605AB 2

8. Montieren Sie die Halterung (6) mit den 2 unverlierbaren Schrauben (9) am Gehäuserahmen.



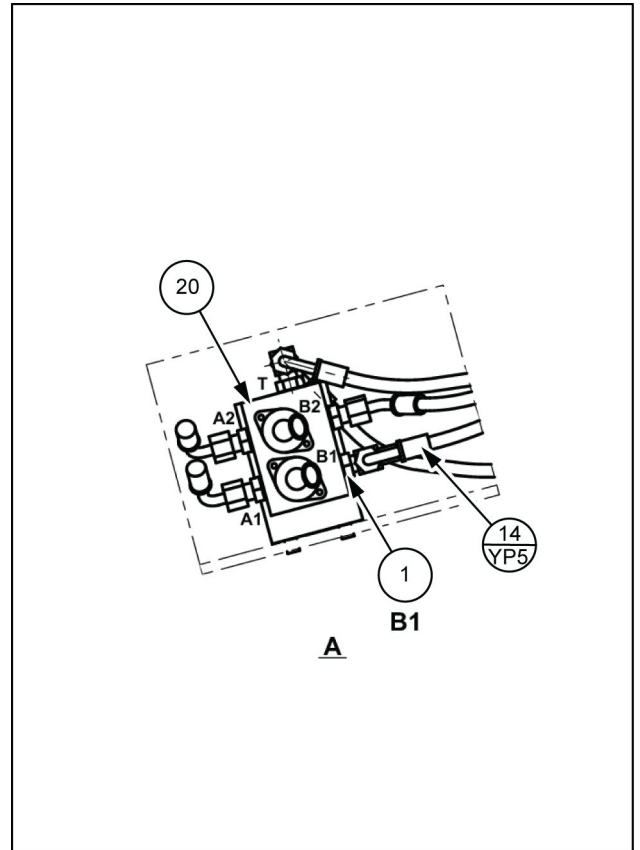
SMIL131I00625BB 13

9. Klemmen Sie den Hydraulikschlauch (13) mit den 2 Schlauchklemmen (7) ein, und montieren Sie dann die Platte (8) mit den 2 Kombischrauben (9), um die Klemmen zu befestigen.



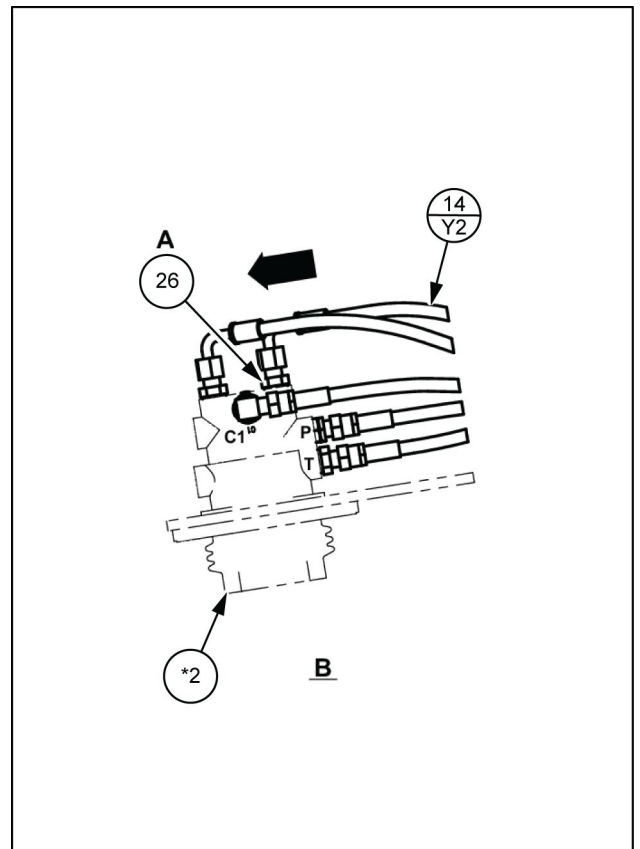
SMIL131I00626BB 14

5. Montieren Sie das T-Stück (1) am Magnetventilan-
schluss (20) B1.
Schließen Sie den Anschluss des Zusatzsteuerventils (*2) P
und des Magnetventils (20) B1 mit dem
Baugruppschlauch (14/YP5).



SMIL131I00641BB 8

6. Montieren Sie den Schlauchadapter (26) am An-
schluss des Zusatzsteuerventils (*2) A.



SMIL131I00642BB 9

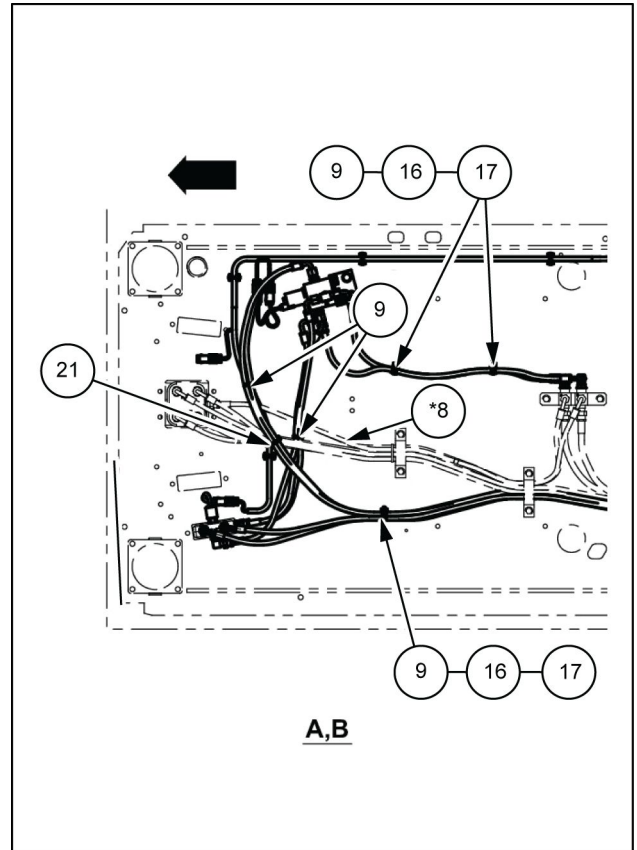
24. Befestigen Sie alles, wie dargestellt, an 3 Stellen mit den Montageklemmen (16), Kreuzschlitzschrauben (17) und Kabelbindern (9).

- Befestigungspunkt 1 sollte **880 mm (34.65 in)** vom Mundstück des Baugruppenschlauchs (12/Y4) und **910 mm (35.83 in)** vom Mundstück des Baugruppenschlauchs (12/Y5) entfernt liegen.

Befestigen Sie die Baugruppenschläuche (12/Y4) und (12/Y5) mit den Kabelbindern (9) und (21).

- Befestigen Sie den Kabelbinder (21) an der Vorsteuerleitung (*8).

Befestigen Sie die Baugruppenschläuche (14/YP5) und (14/YT5) mit den Kabelbindern (9).





INSTRUCTIONS D'INSTALLATION

KG1BP098-00
KIT DE PEDALE DU CIRCUIT POLYVALENT

TEMPS D'INSTALLATION APPROXIMATIF : 32.0 heure(s)

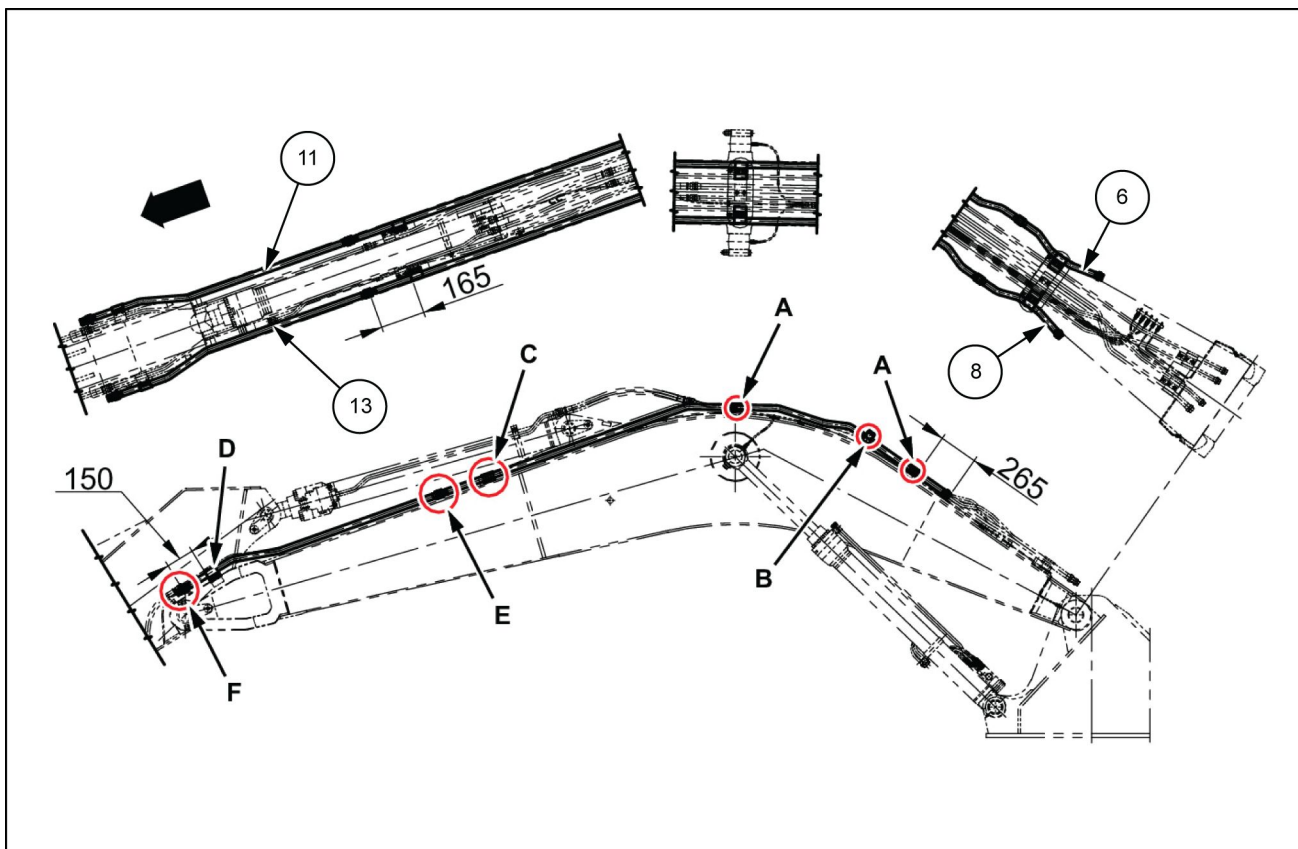
3 - ASSEMBLAGE

KIT DE PEDALE DU CIRCUIT POLYVALENT

Pose des conduites de flèche

CX250C

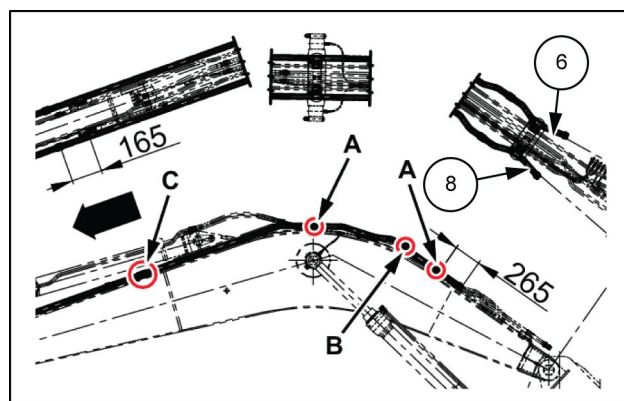
WE



SMIL13II00604FB 1

Ensembles conduites (6) et (8)

1. Placez l'ensemble conduite (gauche) (8) sur la flèche.



SMIL13II00605AB 2

CLICK HERE TO **DOWNLOAD** THE COMPLETE MANUAL

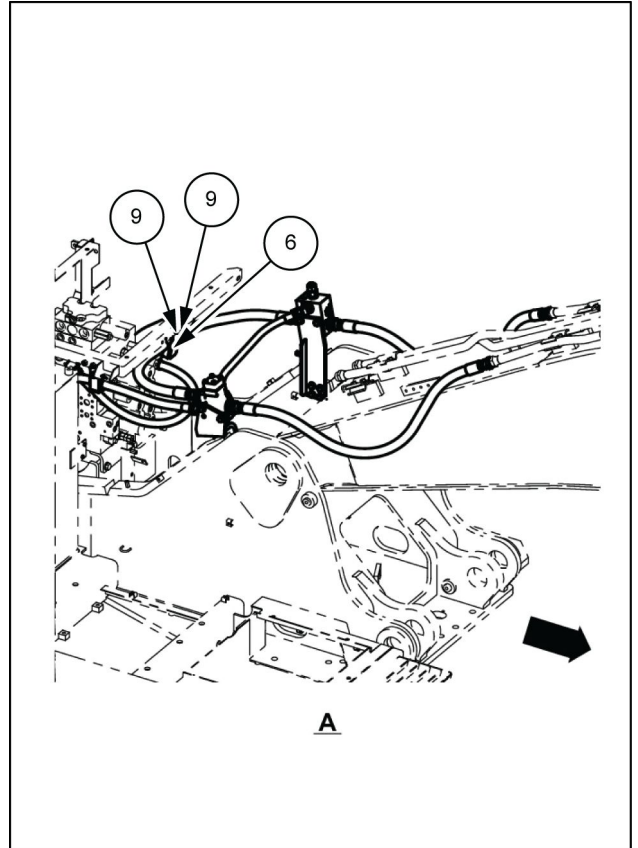
- Thank you very much for reading the preview of the manual.
- You can download the complete manual from: www.heydownloads.com by clicking the link below



- Please note: If there is no response to CLICKING the link, please download this PDF first and then click on it.

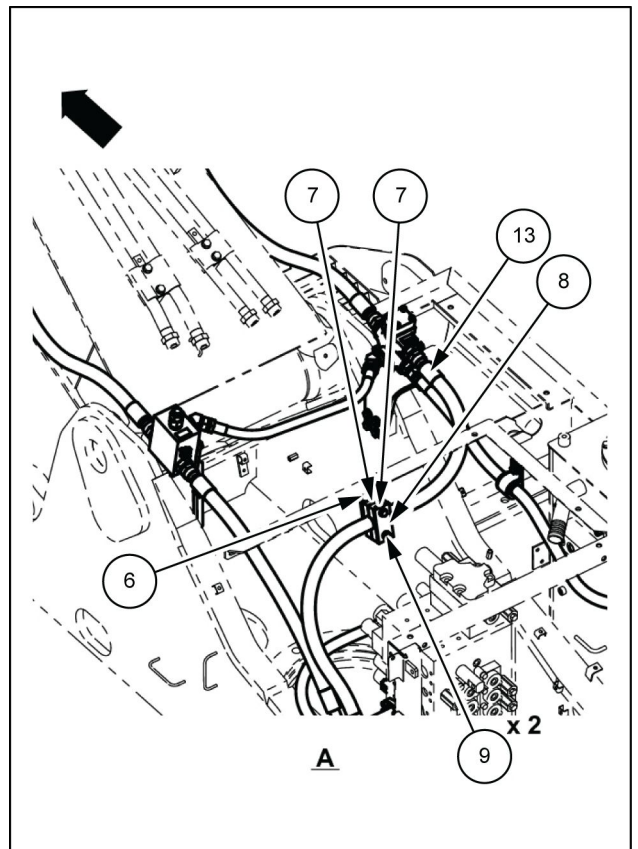
CLICK HERE TO **DOWNLOAD** THE COMPLETE MANUAL

8. Mettez en place le support (6) sur le châssis du carter à l'aide des 2 vis à rondelle (9).



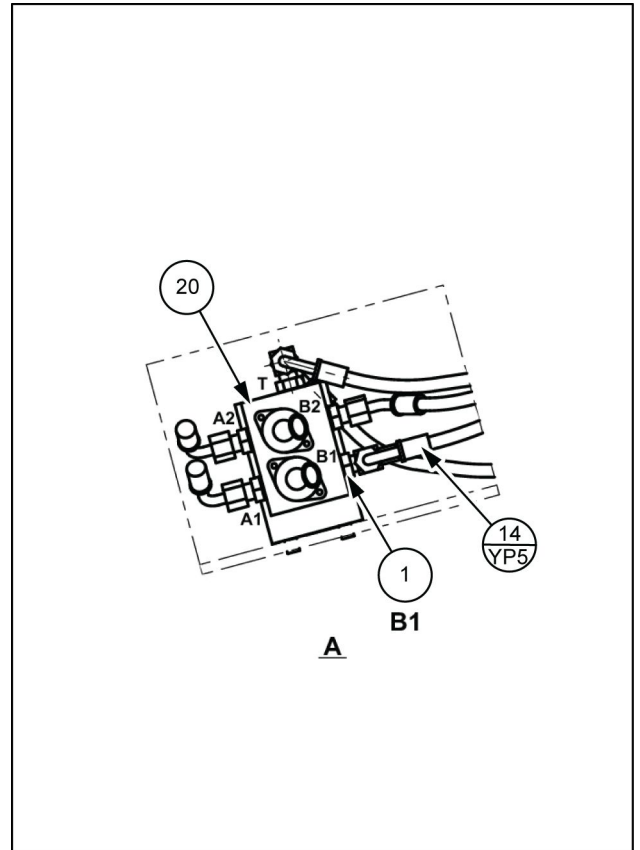
SMIL131I00625BB 13

9. Maintenez le flexible hydraulique (13) à l'aide des 2 colliers de serrage (7), puis mettez en place le plateau (8) à l'aide des 2 vis à rondelle (9) afin de fixer les colliers.



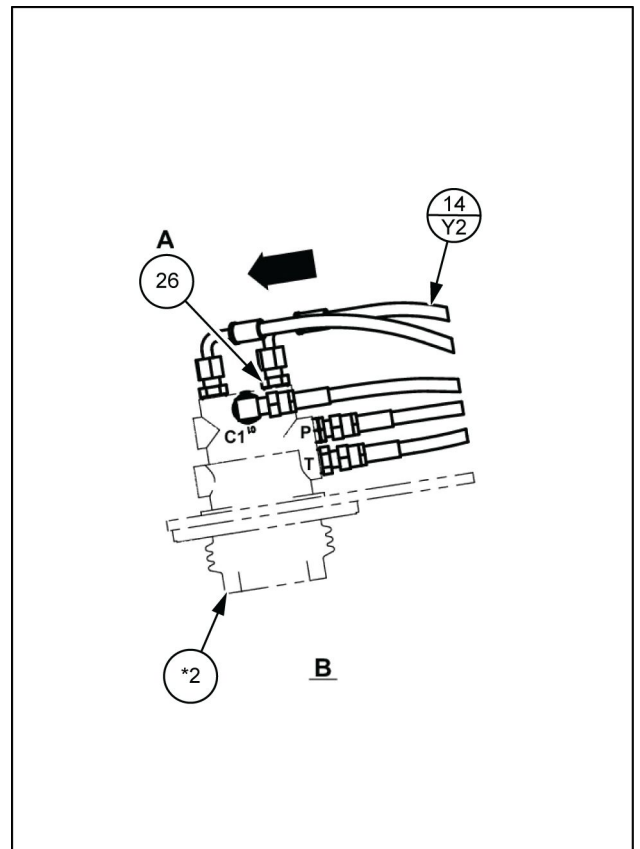
SMIL131I00626BB 14

5. Mettre en place le raccord en T (1) sur l'orifice (20) B1 de l'électrovanne.
Raccordez l'orifice P du distributeur auxiliaire (*2) et l'orifice B1 de l'électrovanne (20) avec l'ensemble flexible (14/YP5).



SMIL13I00641BB 8

6. Posez l'adaptateur de flexible (26) sur l'orifice A du distributeur auxiliaire (*2).



SMIL13I00642BB 9

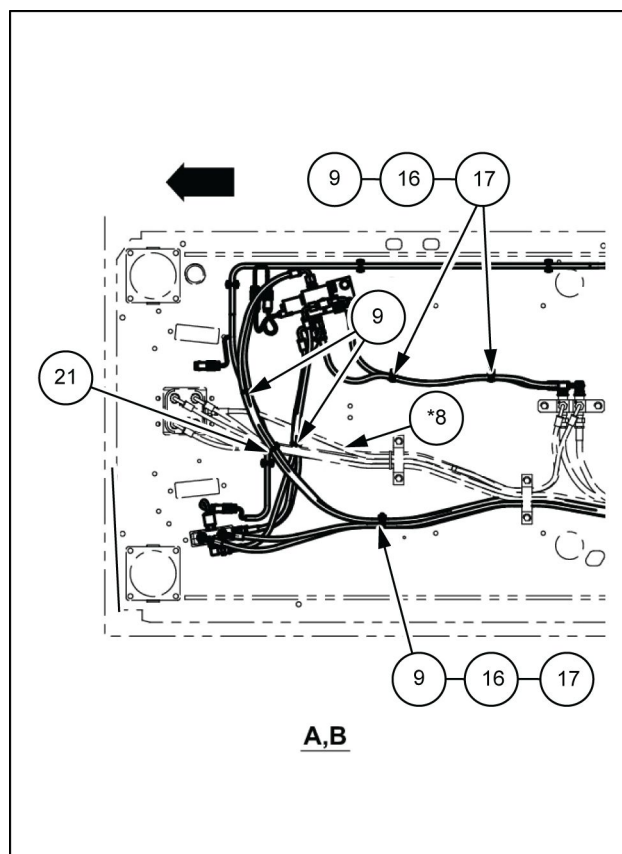
24. Comme illustré dans le schéma, serrer à trois endroits différents avec les colliers de montage (16), les vis cruciformes à tête cylindrique large (17) et les bracelets (9).

- Placer 1 emplacement de fixation à **880 mm (34.65 in)** de l'embout de l'ensemble flexible (12/Y4) et à **910 mm (35.83 in)** de l'embout de l'ensemble flexible (12/Y5).

Attacher les ensembles flexibles (12/Y4) et (12/Y5) au moyen des bracelets (9) et (21).

- Attacher le bracelet (21) avec la conduite de commande de pilotage (*8).

Attacher les ensembles flexibles (14/YP5) et (14/YT5) au moyen des bracelets (9).



SMIL131100660BB 27



ISTRUZIONI DI MONTAGGIO

KG1BP098-00
KIT PEDALE CIRCUITO MULTIUSO

TEMPO DI MONTAGGIO APPROSSIMATIVO: 32.0 ore

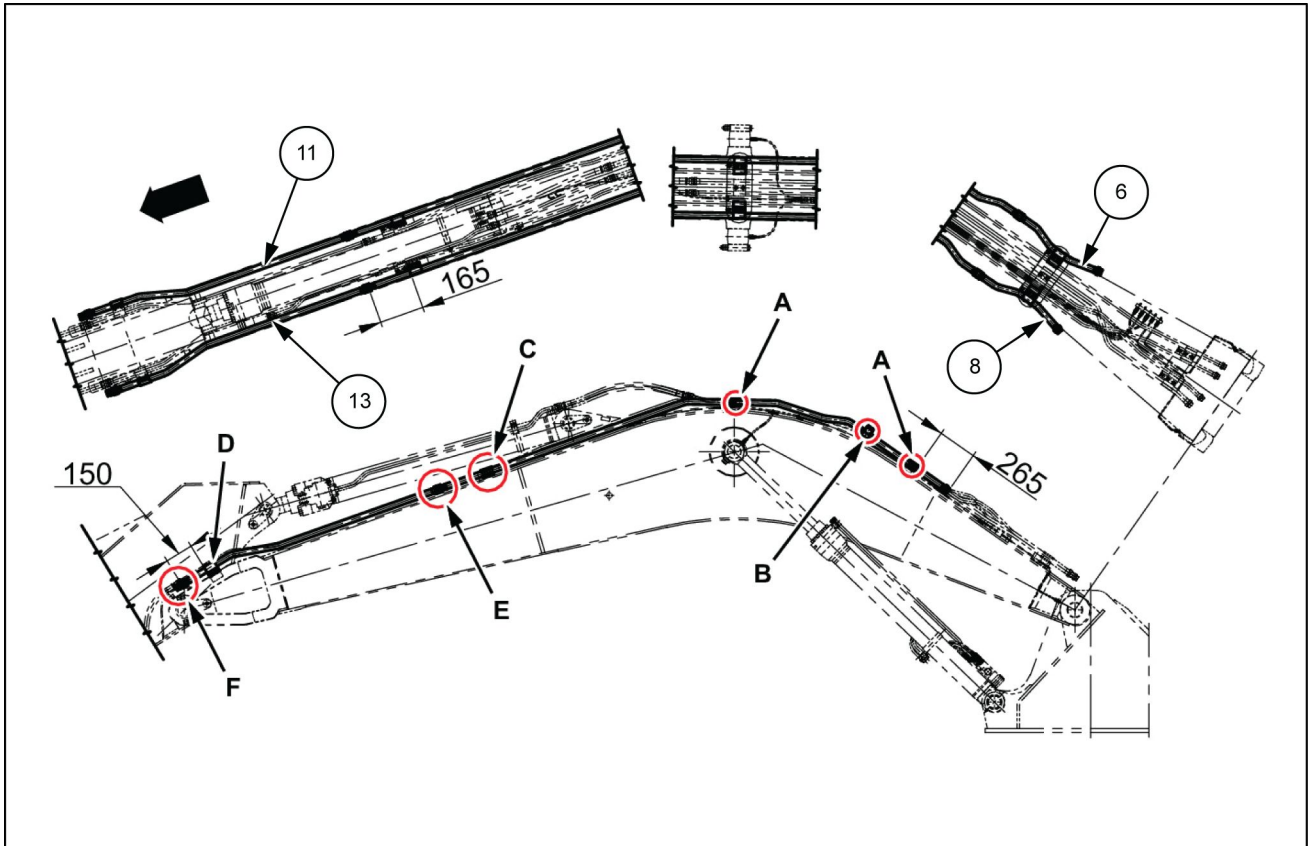
3 - MONTAGGIO

KIT PEDALE CIRCUITO MULTIUSO

Montaggio della tubazione del braccio

CX250C

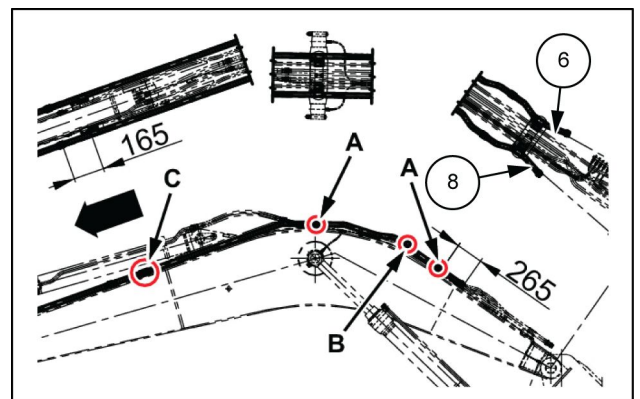
WE



SMIL13II00604FB 1

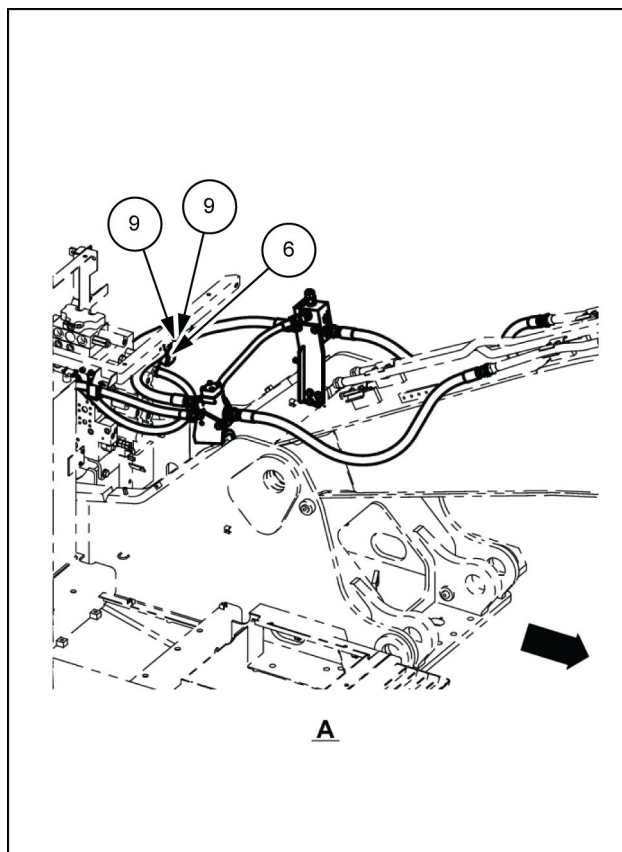
Complessivi tubazione (6) e (8)

1. Posizionare il complesso tubazione (sinistro) (8) sul braccio.



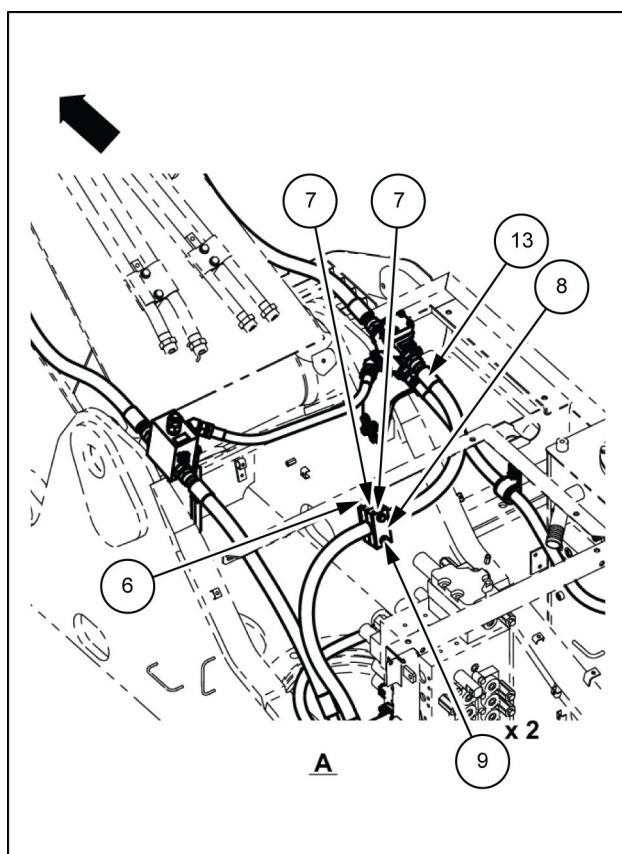
SMIL13II00605AB 2

8. Montare la staffa (6) sul telaio dell'alloggiamento con i 2 bulloni tipo Sems (9).



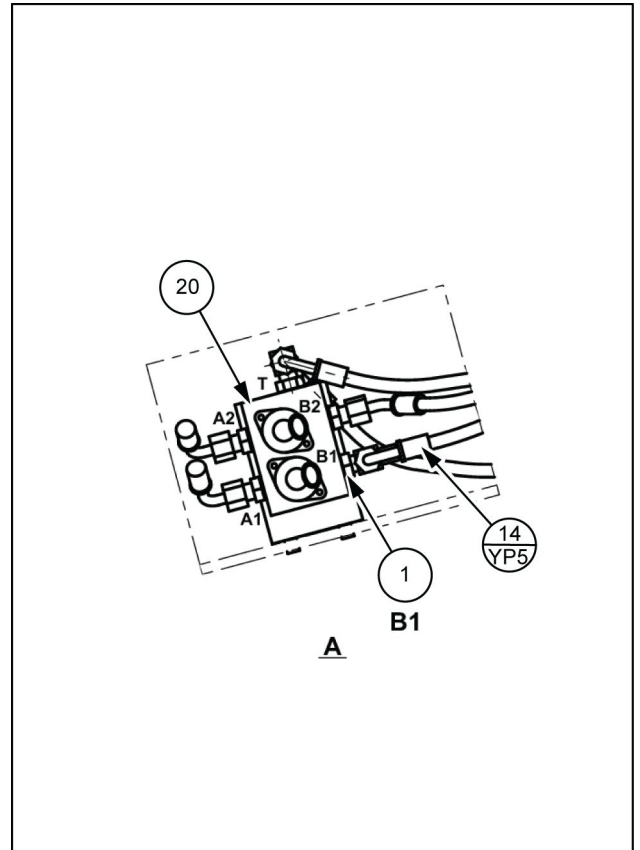
SMIL131I00625BB 13

9. Inserire il flessibile idraulico (13) con le 2 fascette stringitubo (7), quindi montare la piastra (8) con i 2 bulloni tipo Sems (9) per fissare le fascette.



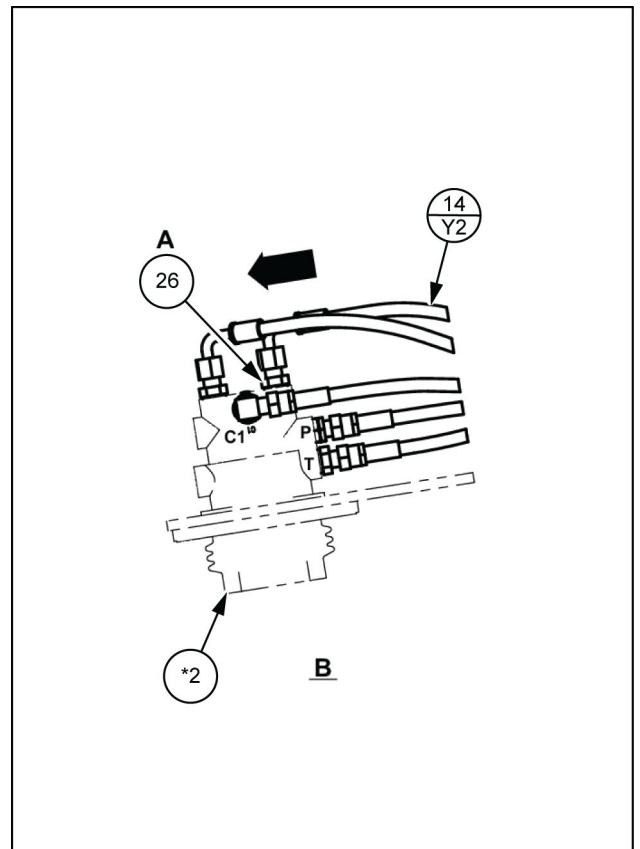
SMIL131I00626BB 14

5. Montare il raccordo a T (1) sulla luce dell'elettrovalvola (20) B1.
 Collegare il distributore idraulico ausiliario (*2), luce P, e l'elettrovalvola (20), luce B1, al tubo flessibile del complessivo (14/YP5).



SMIL131I00641BB 8

6. Montare l'adattatore tubo flessibile (26) sul distributore idraulico ausiliario (*2), luce A.



SMIL131I00642BB 9

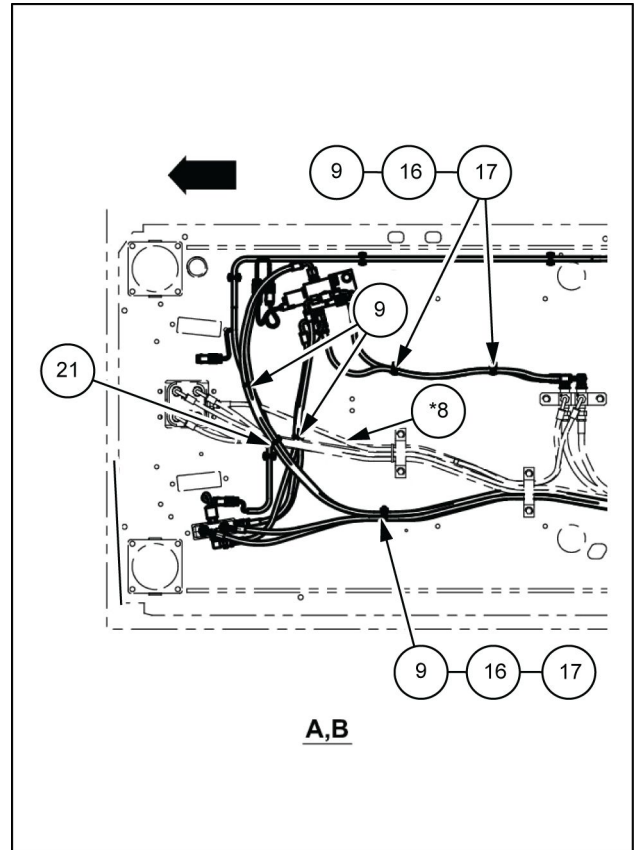
24. Come illustrato in figura, fissare in 3 punti con le fascette di supporto (16), le viti a testa piatta Phillips (17) e le fascette stringitubo (9).

- Posizionare 1 punto di fissaggio a **880 mm (34.65 in)** dall'imboccatura del tubo flessibile del complessivo (12/Y4) e a **910 mm (35.83 in)** dall'imboccatura del tubo flessibile del complessivo (12/Y5).

Serrare i tubi flessibili del complessivo (12/Y4) e (12/Y5) con le fascette stringitubo (9) e (21).

- Fissare la fascetta stringitubo (21) insieme alla tubazione di comando pilota (*8).

Serrare i tubi flessibili del complessivo (14/YP5) e (14/YT5) con le fascette stringitubo (9).



SMIL131100660BB 27



INSTRUCCIONES DE INSTALACIÓN

KG1BP098-00

KIT DE PEDALES PARA CIRCUITO MULTIUSOS

TIEMPO DE INSTALACIÓN APROXIMADO: 32.0 horas

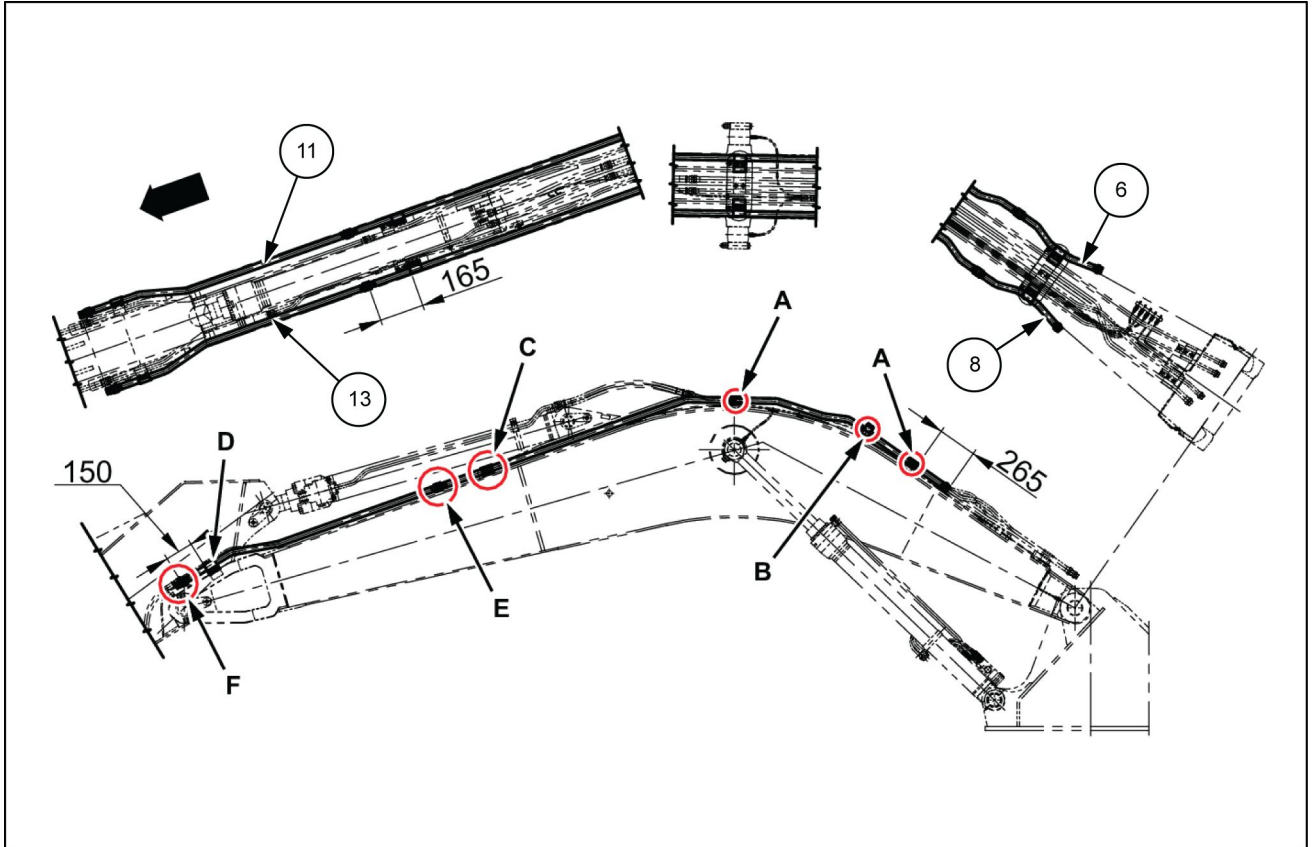
3 - MONTAJE

KIT DE PEDALES PARA CIRCUITO MULTIUSOS

Instalación del conducto del brazo

CX250C

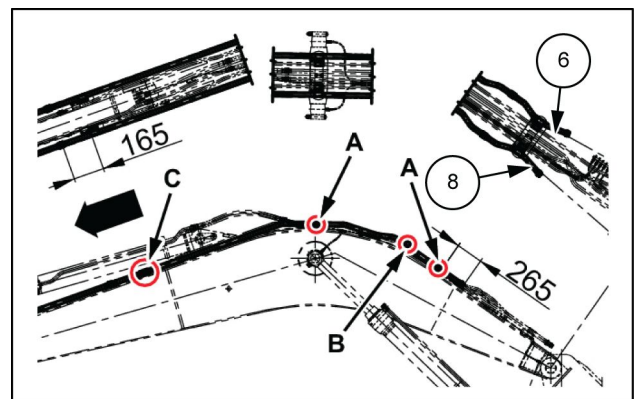
WE



SMIL13II00604FB 1

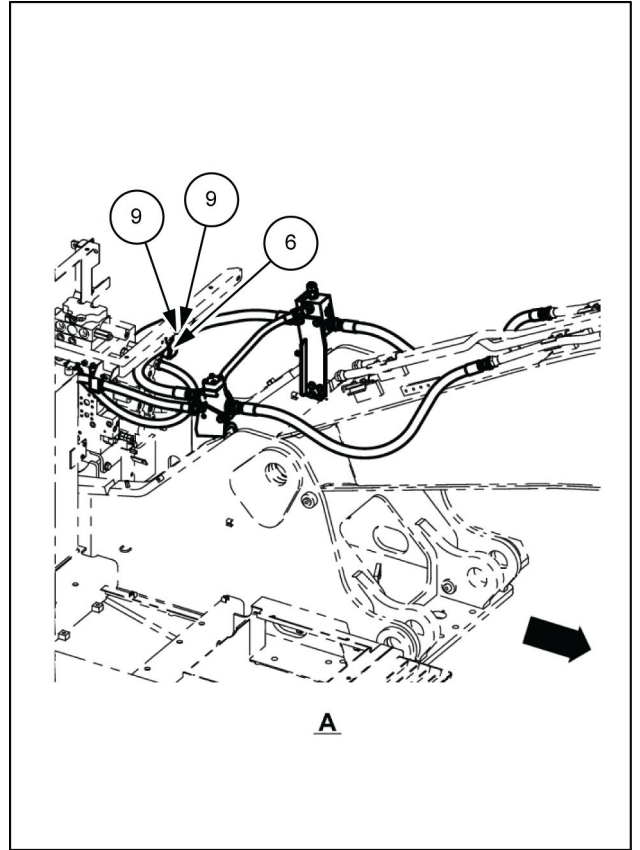
Conjuntos de conductos (6) y (8)

1. Instale el conducto (izquierdo) (8) en la pluma.



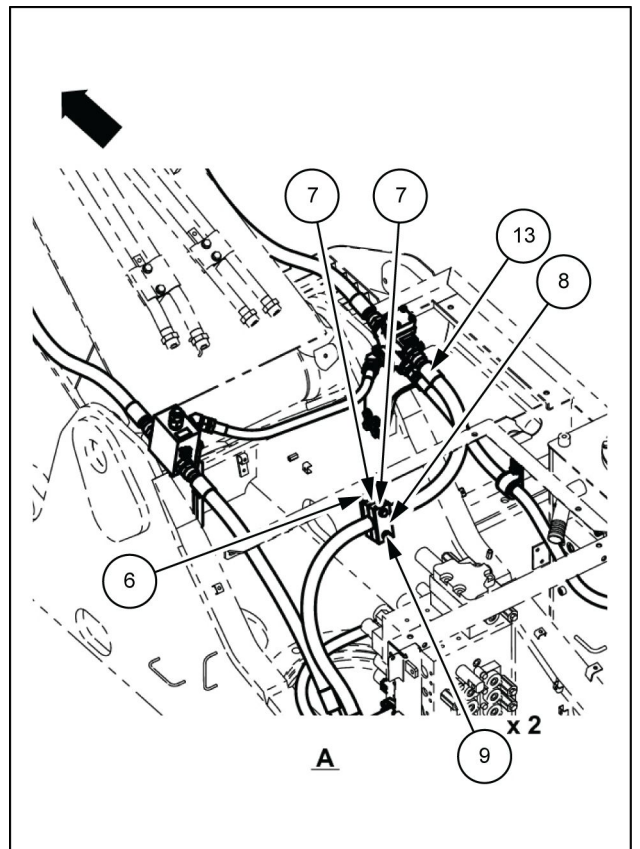
SMIL13II00605AB 2

8. Instale el soporte (6) en el bastidor de alojamiento (9) con 2 pernos SEMS.



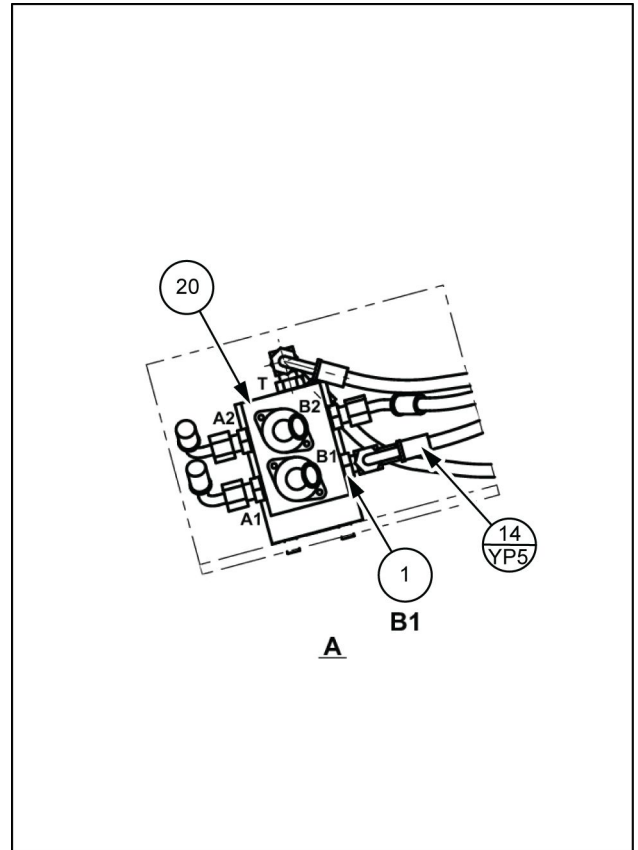
SMIL131I00625BB 13

9. Coloque la manguera hidráulica (13) entre las 2 bridas (7) e instale a continuación la placa (8) con los 2 pernos SEMS (9) para fijar las bridas.



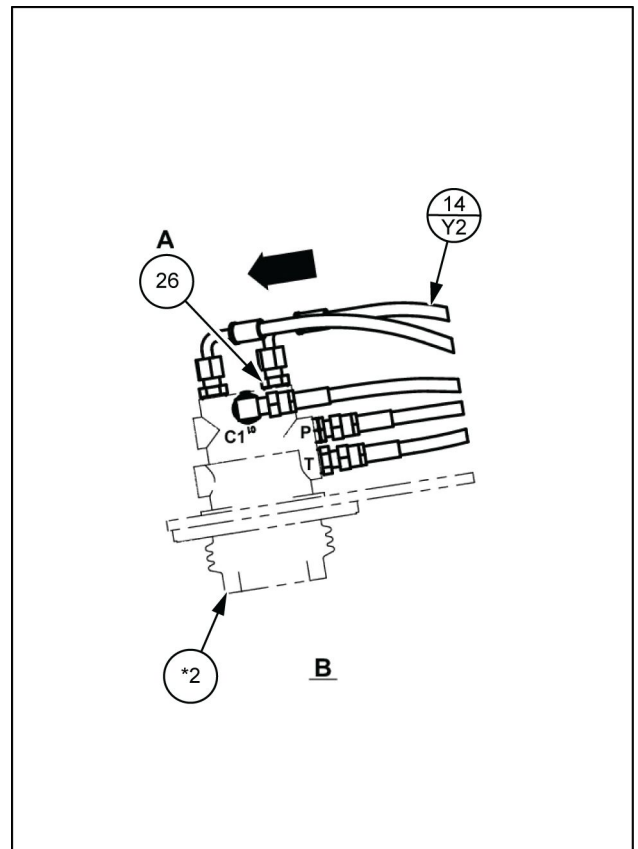
SMIL131I00626BB 14

5. Monte el racor en T (1) en el puerto de la electroválvula (20) B1.
 Conecte el puerto P de la válvula de control remoto (*2) y el puerto B1 de la válvula de solenoide (20) con la manguera (14/YP5).



SMIL131I00641BB 8

6. Instale el adaptador de la manguera (26) en el puerto A de la válvula de control remoto (*2).



SMIL131I00642BB 9

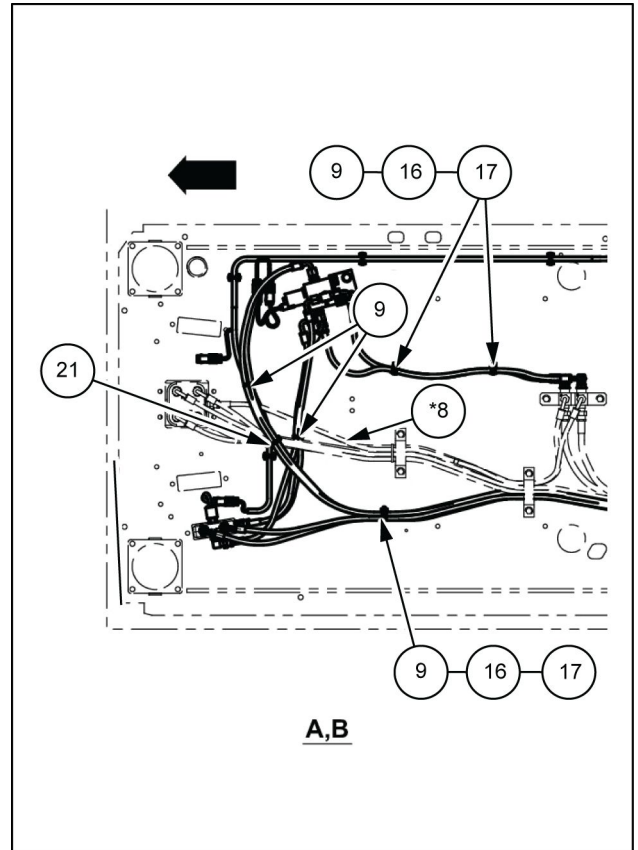
24. Tal como se muestra en el diagrama, sujete en 3 lugares utilizando abrazaderas (16), tornillos de cabeza plana Phillips (17) y bridas (9).

- Mantenga 1 punto de sujeción **880 mm (34.65 in)** alejado de la boca del conjunto de mangueras (12/Y4) y **910 mm (35.83 in)** también alejado de la boca del conjunto de mangueras (12/Y5).

Sujete las mangueras (12/Y4) y (12/Y5) con las bridas (9) y (21).

- Sujete la brida para cables (21) junto con la tubería de control piloto (*8).

Sujete el conjunto de mangueras (14/YP5) y (14/YT5) con las bridas para cables (9).



SMIL131I00660BB 27

CLICK HERE TO **DOWNLOAD** THE COMPLETE MANUAL

- Thank you very much for reading the preview of the manual.
- You can download the complete manual from: www.heydownloads.com by clicking the link below



- Please note: If there is no response to CLICKING the link, please download this PDF first and then click on it.

CLICK HERE TO **DOWNLOAD** THE COMPLETE MANUAL