

Attachment, Air Trailer Brake

BL16117, BL16118, BL16258, BL16259, BL16260, BL16261,
BL16262, BL16263, BL16264, and BL16265



JOHN DEERE

INSTALLATION INSTRUCTIONS

MHM1796 19FEB20 (ENGLISCH)

6090M, 6100M, 6110M, 6120M, 6125M, 6130M, 6140M,
6145M, 6155M, 6175M, 6195M, (MY20)

John Deere GmbH & Co. KG
John Deere Werk Mannheim
MHM1796 (19FEB20)

PRINTED IN U.S.A.
COPYRIGHT © 2020
DEERE & COMPANY
Moline, Illinois

All rights reserved.
A John Deere ILLUSTRATION™ Manual

MHM1796-19-19FEB20

CLICK HERE TO **DOWNLOAD** THE COMPLETE MANUAL

- Thank you very much for reading the preview of the manual.
- You can download the complete manual from: www.heydownloads.com by clicking the link below



- Please note: If there is no response to CLICKING the link, please download this PDF first and then click on it.

CLICK HERE TO **DOWNLOAD** THE COMPLETE MANUAL

On 6110M (WB2580), 6125M to 6195M tractors

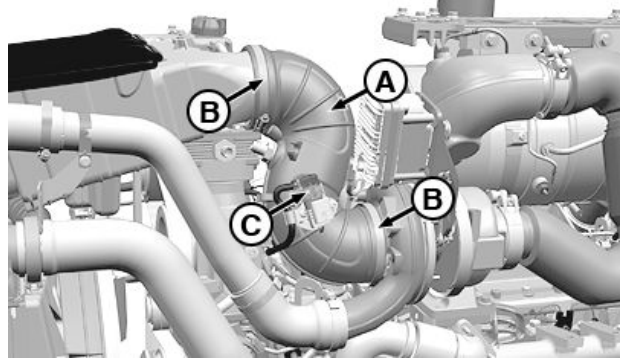
NOTE: The illustration shows the hose installation on 6175M tractors. The connections of the hose at the compressor and air intake hose have different locations on different tractor models.

Disconnect wiring harness connector (C). Loosen the clamps (B) and remove the air-intake hose (A).

Re-install the new air-intake hose (A) and secure it with new clamps (B).

Connect wiring harness connector (C) to air-intake hose.

IMPORTANT: Clean the air-intake hose thoroughly before installing.



Air intake hose on 6155M tractors shown

- A—Air Intake Hose AL214445¹, AL214446², AL208708³, AL208710⁴
- C—Wiring Harness Connector
- B—Clamp AL220794 (2 used)

¹Attachment BL16258 and BL16259
²Attachment BL16260 and BL16261
³Attachment BL16262 and BL16263
⁴Attachment BL16264 and BL16265

LX26150,00012F6 -19-18FEB20-4/5

LX402284 —UN—29JAN20

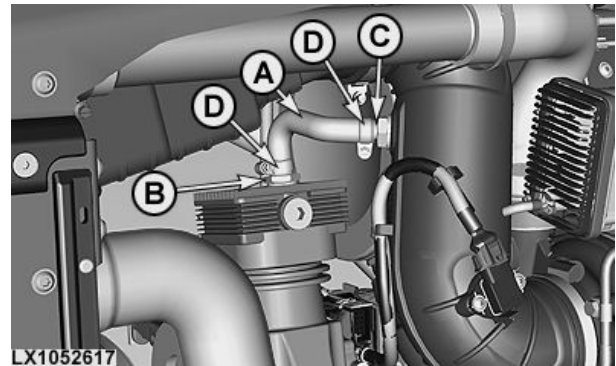
For all tractors

Fasten hose (A) with the hose clamps (D) at fitting (B) and fitting (C).

Specification

Hose Clamp, Hose at Fitting—Torque.....5 ± 0.5 N·m (4 ± 0.4 lb-ft)

- A—Hose L219940¹ L212886², L212890³, L208569⁴ or L208572⁵
- C—Fitting L157314, Air Intake Hose
- B—Fitting L156705, Compressor
- D—Hose Clamp AL220794



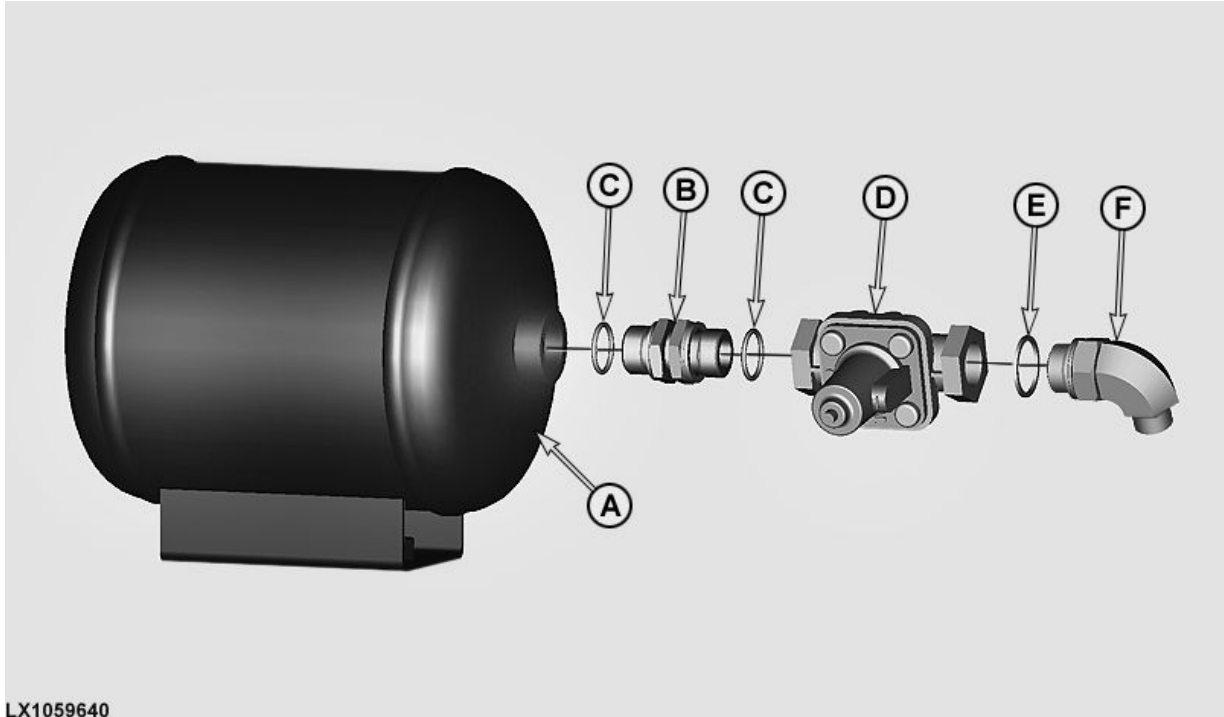
Air intake hose on 6175M tractors shown

¹Attachment BL16117 and BL16118
²Attachment BL16258 and BL16259
³Attachment BL16260 and BL16261
⁴Attachment BL16262 and BL16263
⁵Attachment BL16264 and BL16265

LX26150,00012F6 -19-18FEB20-5/5

LX1052617 —UN—25JUL11

Pre-Assemble the Tank for Air Dryer



LX1059640

A—Tank for Air Dryer AL207504
B—Fitting AL207632

C—Backup Ring L170445
D—Overflow Valve AL207476

E—Backup Ring L170445
F—Fitting RE212396

Pre-assemble the tank for the air dryer as shown in the drawing.

NOTE: If overflow valve AL207476 (D) is equipped, connection 2 must be installed so that it faces the tank.

LX26150,00012FA -19-18FEB20-1/1

LX1059640—UN—22NOV12

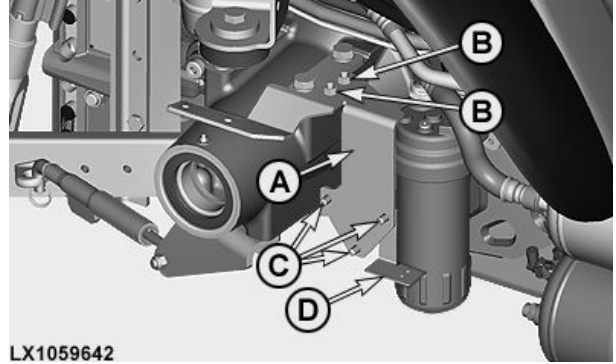
Install the Air Dryer and Tank for Air Dryer (6110M (WB2580), 6125M - 6195M Tractors)

NOTE: The following steps are only for installation of BL16258, BL16259, BL16260, BL16261, BL16262, BL16263, BL16264 and B16265 attachments.

- Put bracket (A) in position and secure it with hex nuts (B).
- Position bracket (D) and fasten with cap screws (C).

Specification

Bracket (A) to Axle Housing, Hex Nut (B)—Torque.....	80 ± 10 N·m (59 ± 7.4 lb-ft)
Air Dryer to Bracket (A) and bracket (D), Cap Screw (C)—Torque.....	80 ± 10 N·m (59 ± 7.4 lb-ft)



LX1059642

- A**—Bracket L222448, L210666 or AL209191
B—Hex Nut, 14M7275 (2 used)
C—Cap Screw, L168204 (3 used)
D—Bracket L206030

LX26150,00012FD -19-18FEB20-1/3

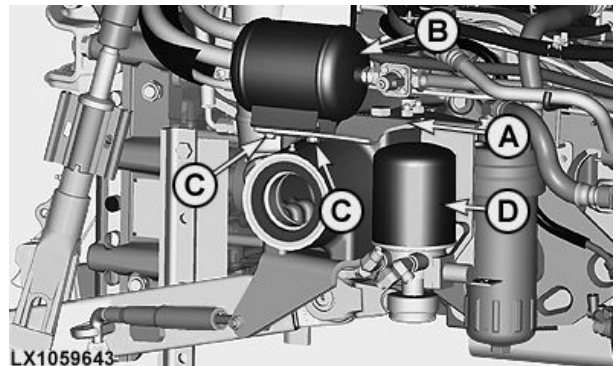
LX1059642 —UN—27NOV12

- Fasten tank (B) with cap screws (C) and fasten air dryer (D) with the L168204 cap screws to bracket (A).

Specification

Tank (B) to Bracket, Cap Screw (C)—Torque.....	80 ± 10 N·m (59 ± 7.4 lb-ft)
--	---------------------------------

- A**—Bracket L222448, L210666 or AL209191
B—Tank AL207504
C—Cap Screws 19M7268
D—Air Dryer AL202707



LX1059643

Continued on next page

LX26150,00012FD -19-18FEB20-2/3

LX1059643 —UN—27NOV12

Connect brake lines (B) and (C) to trailer brake valve (A).

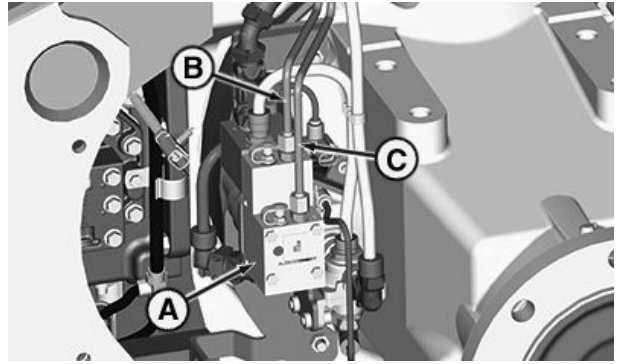
Specification

Brake Lines to Trailer

Brake Valve—Torque..... 16 +2/-3 N·m
(12 +1.5/-2 lb-ft)

A—Trailer Brake Valve,
AL22026¹, BL16263²,
AL220323³, AL220327⁴
B—Brake Line AL223833

C—Brake Line AL223832

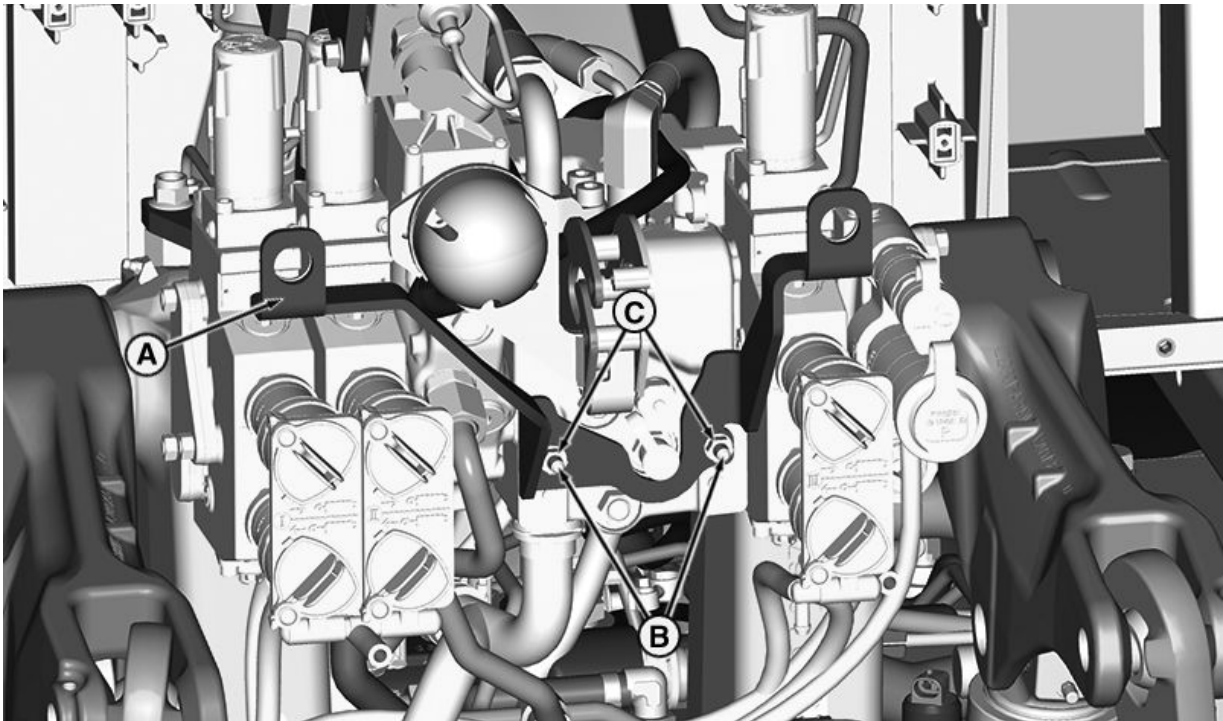


LX318612—UN—08JUN17

¹BL16262 attachment
²BL16263 attachment
³BL16264 attachment
⁴BL16265 attachment

LX26150,00012F3 -19-13FEB20-17/17

Install Bracket and Coupling Ends



A—Bracket L209708¹ or L213946² **B**—Stud M8
C—Hex Nut, M8

With hex nuts (C) and washers, secure bracket (A) to studs (B).

Specification

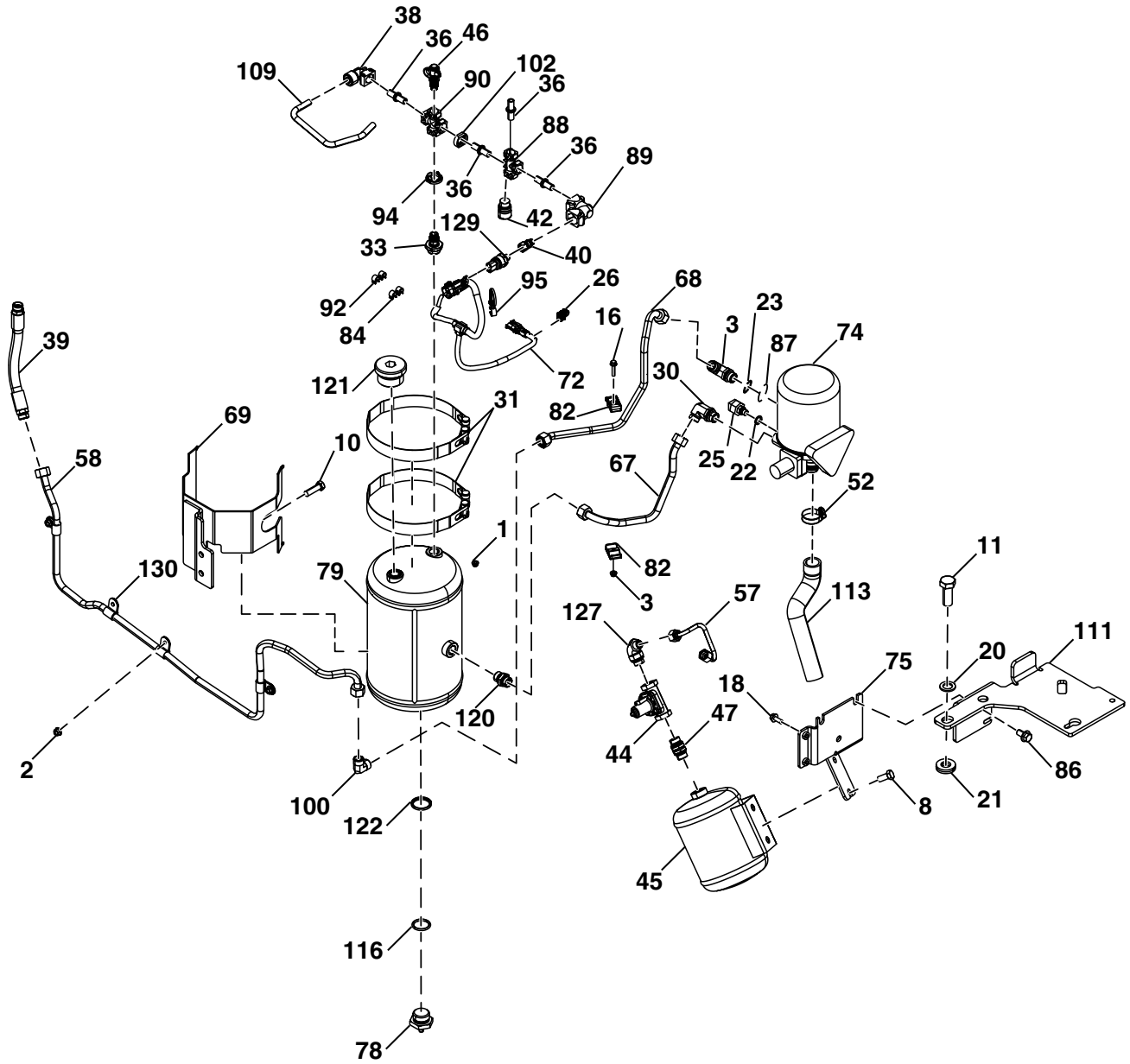
Bracket to Priority Block,
Hex Nut (C)—Torque.....25 ± 2.5 N·m
(18.4 ± 1.8 lb-ft)

¹6110M (WB2580) to 6195M
²6090M to 6120M tractors (WB2400)

Continued on next page

LX26150,00012F4 -19-13FEB20-1/4

LX325238—UN—17JUL17



LX402282B—UN—30JAN20

Continued on next page

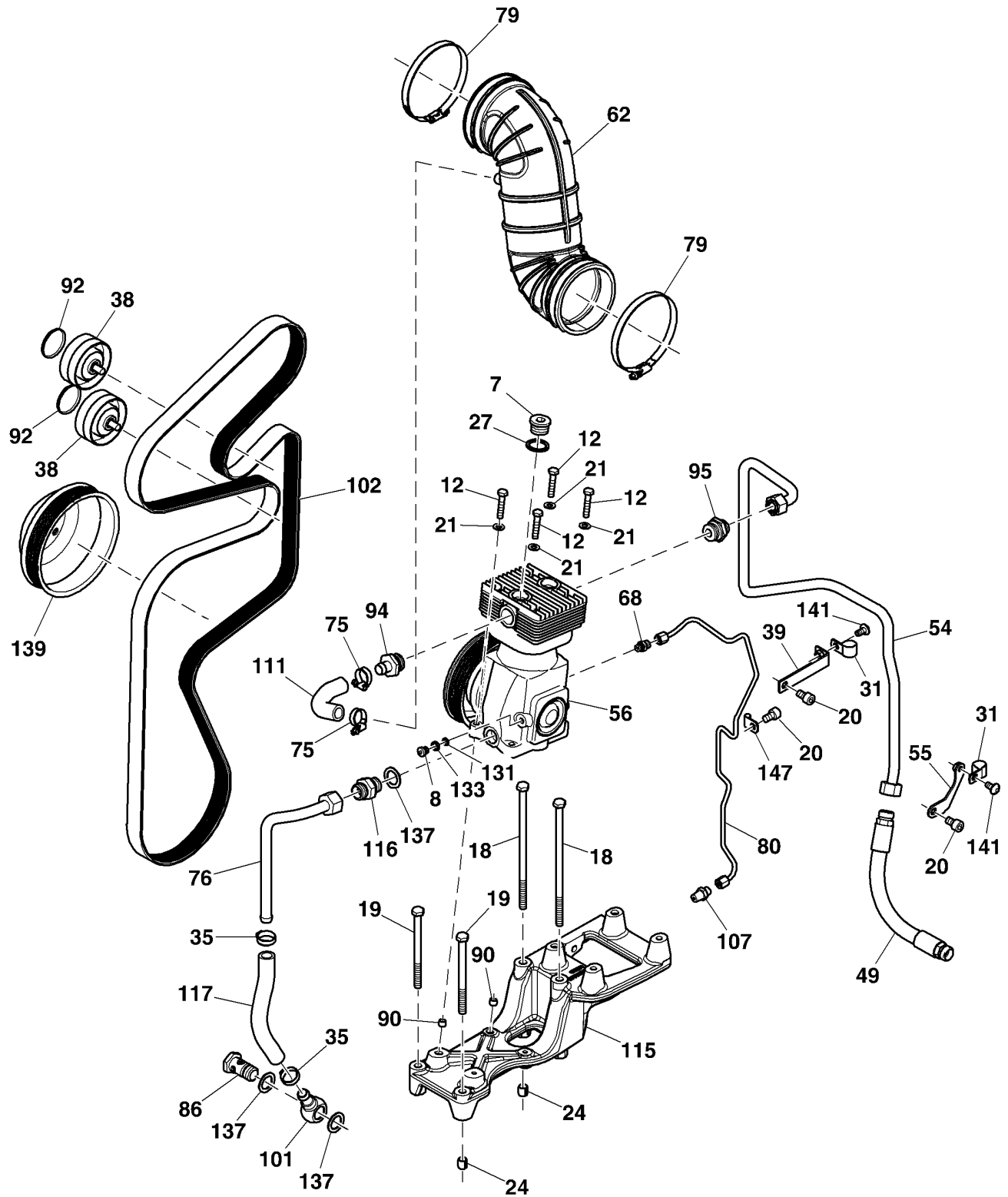
LX26150,00012E4 -19-12FEB20-2/6

Item	Part Number	Designation	BL16258	BL16259
42	AL203190	Fitting, M22	2	2
43	AL203192	Fitting for Coupling End	1	1
44	AL203193	Fitting for Coupling End	1	1
45	AL203197	Connecting Piece	5	5
46	AL203200	Fitting	4	4
47	AL203201	Elbow Fitting	5	5
48	AL203204	Compressed-Air Hose	1	1
49	AL203218	Connecting Piece with Internal Thread	1	1
50	AL203451	Fitting	2	2
51	AL203473	Fitting	1	1
52	AL204954	Fitting	1	1
53	AL206960	Elbow Fitting	1	1
54	AL207476	Overflow Valve	1	1
55	AL207504	Pressure Tank for Air Dryer	1	1
56	AL207560	Test Port	1	1
57	AL207632	Connecting Piece	1	1
58	AL208109	Connecting Piece	2	2
59	AL209381	Bracket for Compressed-Air Tank	1	1
60	AL209546	Compressed Air Line	1	1
61	AL209663	Pneumatic Shuttle Valve	1	1
62	AL209837	Fitting	1	1
63	AL210050	Fitting	2	2
64	AL210332	Clamp	4	4
65	AL211484	Adapter Plate	1	1
66	AL213014	Oil Line	1	1
67	AL213602	Air Compressor	1	1
68	AL214445	Air Inlet Hose	1	1
69	AL214526	Fitting	1	1
70	AL215205	Compressed Air Line	1	1
71	AL217439	Yellow Coupling End (brake)	1	1
72	AL226771	Compressed Air Line	1	1
73	AL219962	Compressed Air Line	1	1
74	AL220324	Dual-Line Trailer Control Valve (26 bar)	1	
	AL220327	Dual-Line Trailer Control Valve (30 bar)		1
75	AL220769	Bracket	1	1
76	AL220794	Hose Clamp	1	1
77	AL222051	Oil Line	1	1
78	AL222913	Pressure Line	1	1
79	AL223089	Left Pilot Line	1	1
80	AL223090	Right Pilot line	1	1
81	AL224668	Wiring Harness	1	1

Continued on next page

LX26150,00012E6 -19-18FEB20-5/7

Parts List for Attachments BL16262 and BL16263



LX312215A

LX312215A —UN—06JUL17

Continued on next page

LX26150,00012EA -19-13FEB20-1/7

CLICK HERE TO **DOWNLOAD** THE COMPLETE MANUAL

- Thank you very much for reading the preview of the manual.
- You can download the complete manual from: www.heydownloads.com by clicking the link below



- Please note: If there is no response to CLICKING the link, please download this PDF first and then click on it.

CLICK HERE TO **DOWNLOAD** THE COMPLETE MANUAL