



INSTALLATION INSTRUCTIONS

51409158

HYDRAULIC DRAIN THIRD FUNCTION (Z-BAR)

APPROXIMATE INSTALLATION TIME: 4.0 hours

CLICK HERE TO **DOWNLOAD** THE COMPLETE MANUAL

- Thank you very much for reading the preview of the manual.
- You can download the complete manual from: www.heydownloads.com by clicking the link below



- Please note: If there is no response to CLICKING the link, please download this PDF first and then click on it.

CLICK HERE TO **DOWNLOAD** THE COMPLETE MANUAL



PRINTED IN ITALY

© 2018 CNH Industrial Italia S.p.A. All rights reserved.

No part of the text or illustrations of this publication may be reproduced.

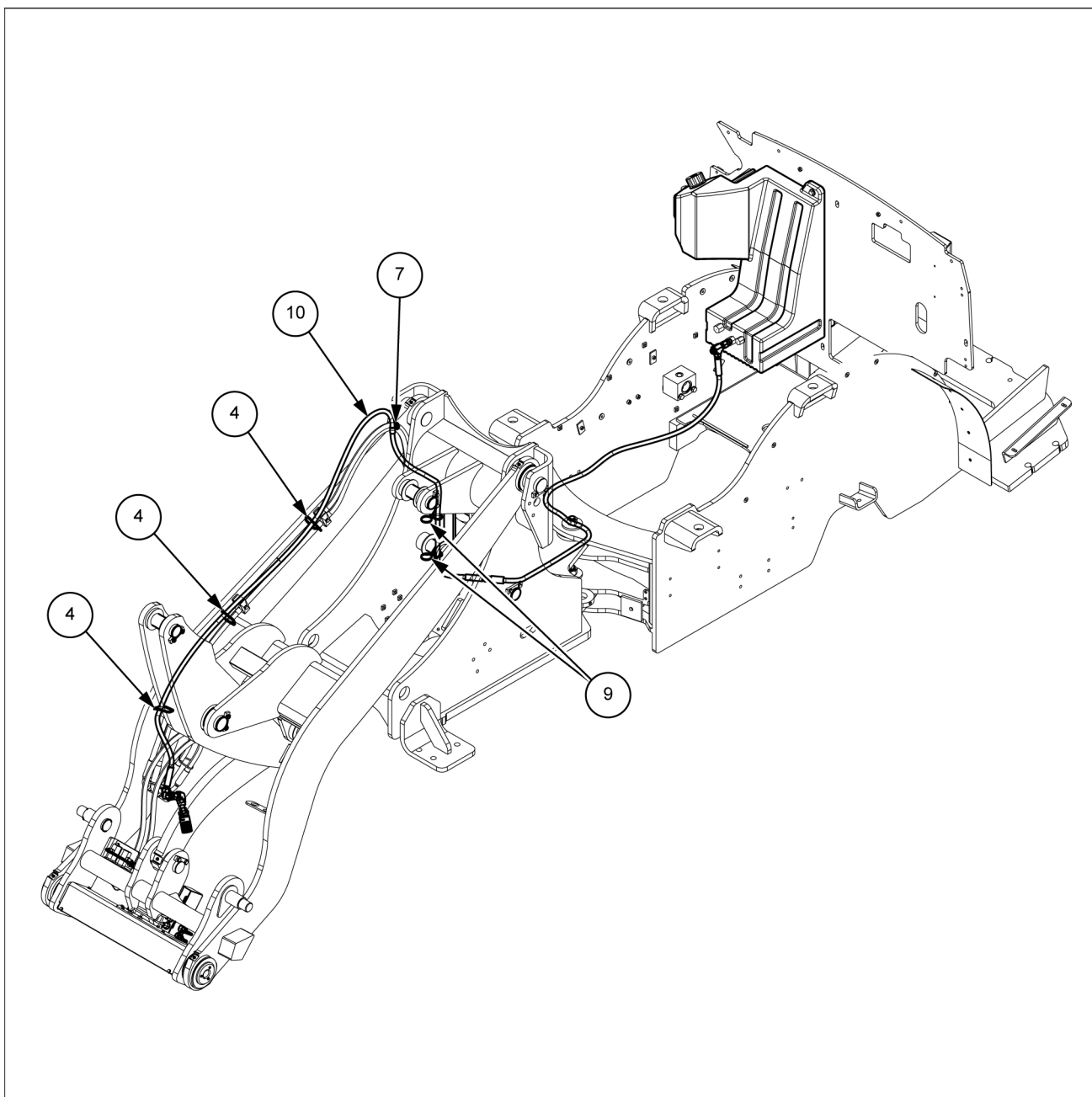
CNH Industrial Italia S.p.A reserves the right to make improvements in design and changes in specifications at any time without notice and without incurring any obligation to install them on units previously sold. Specifications, descriptions, and illustrative material herein are as accurate as known at the time of publication, but are subject to change without notice.

Availability of some models and equipment builds varies according to the country in which the equipment is being used. For exact information about any particular product, please consult your CNH Industrial dealer.

CNH Industrial is a trademark registered in the United States and many other countries, owned or licensed to CNH Industrial N.V., its subsidiaries or affiliates.

Any trademarks referred to herein, in association with goods and/or services of companies, other than owned by or licensed to CNH Industrial N.V., its subsidiaries or affiliates, are the property of those respective companies.

12. Fixer le flexible de vidange (10) aux tuyaux hydrauliques à l'aide des attaches doubles (9).
13. Fixer le flexible de vidange (10) aux flexibles de conduite du bras en utilisant les trois attaches de câble (4) comme indiqué.



LEIL17CWL0141GB 15

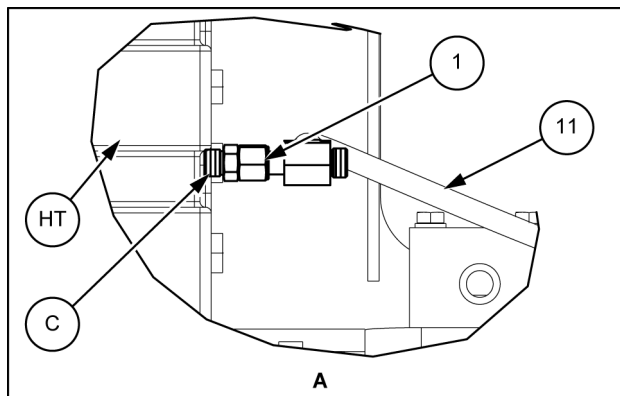
Post-montage

14. Remplir le réservoir hydraulique.
Consulter les spécifications dans le Manuel de l'utilisateur.
15. Mettre l'interrupteur principal de la batterie en position « ON » (Marche).
16. Démarrer le moteur.

Einbau

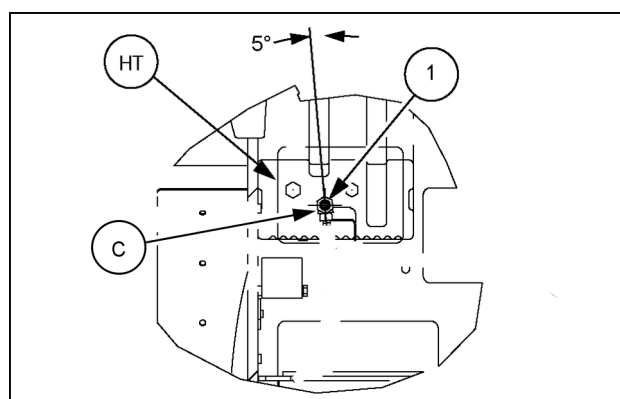
HINWEIS: Wenn ihre Maschine nicht mit der Option HIGH FLOW ausgestattet ist, befolgen Sie die Schritte 2 bis 4.

2. Montieren Sie das T-Anschlussstück (1) am vorhandenen Hydraulikstecker (C). Ziehen Sie sie mit dem Standardanzugsmoment fest.



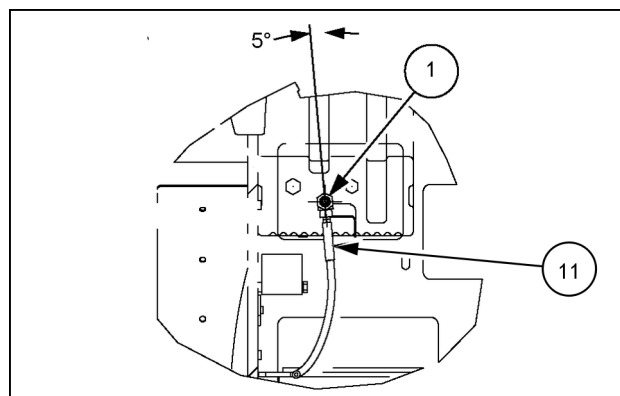
LEIL17CWL0143AB 4

HINWEIS: Richten Sie das T-Stück (1) in dem in Abbildung 5 dargestellten Winkel aus.



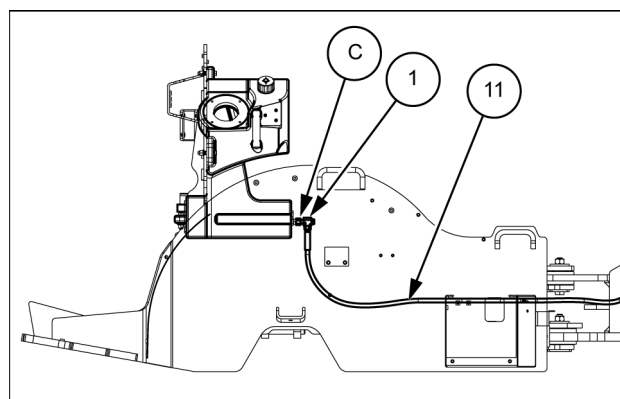
LEIL15CWL0226AB 5

3. Montieren Sie den Ablaufschlauch (11) am T-Anschlussstück (1). Ziehen Sie sie mit dem Standardanzugsmoment fest.



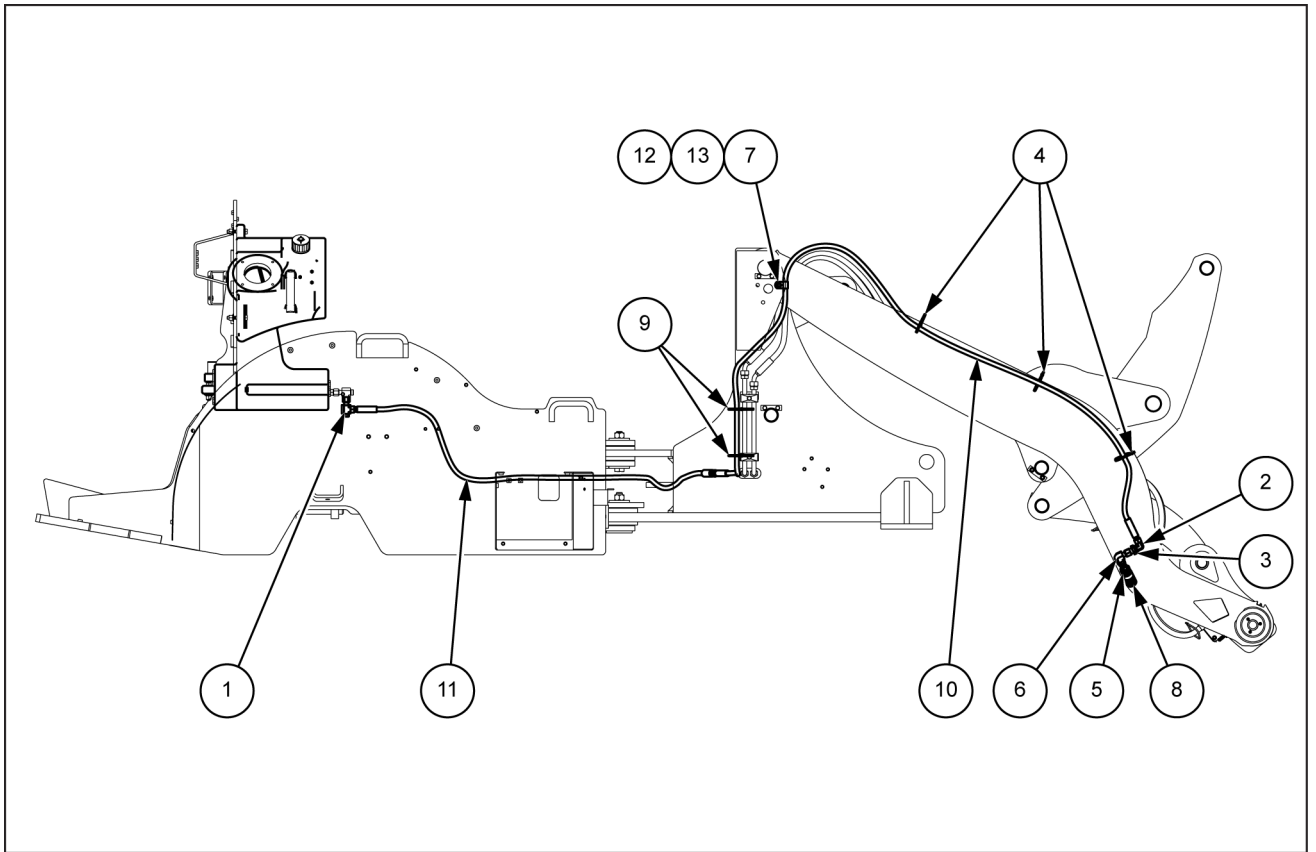
LEIL15CWL0226AB 6

4. Schließen den Ablaufschlauch (H1) an der Vorderseite des T-Anschlussstücks (1) an. Ziehen Sie sie mit dem Standardanzugsmoment fest.



LEIL17CWL0150AB 7

1 - CONTENUTO DEL KIT



LEIL17CWL0140FB 2

Con opzione **HIGH FLOW**

51409158 - HYDRAULIC DRAIN THIRD FUNCTION (Z-BAR)

CASE CONSTRUCTION

221F HS
221F STD

321F HS
321F STD

NEW HOLLAND CONSTRUCTION

W70C
W70C HS

W80C
W80C HS

CLICK HERE TO **DOWNLOAD** THE COMPLETE MANUAL

- Thank you very much for reading the preview of the manual.
- You can download the complete manual from: www.heydownloads.com by clicking the link below



- Please note: If there is no response to CLICKING the link, please download this PDF first and then click on it.

CLICK HERE TO **DOWNLOAD** THE COMPLETE MANUAL