



INSTALLATION INSTRUCTIONS

KG0SP871-00
MULTI-PURPOSE PLUS THREE-WAY VALVE KIT

APPROXIMATE INSTALLATION TIME: 32.0 hours

CLICK HERE TO **DOWNLOAD** THE COMPLETE MANUAL

- Thank you very much for reading the preview of the manual.
- You can download the complete manual from: www.heydownloads.com by clicking the link below



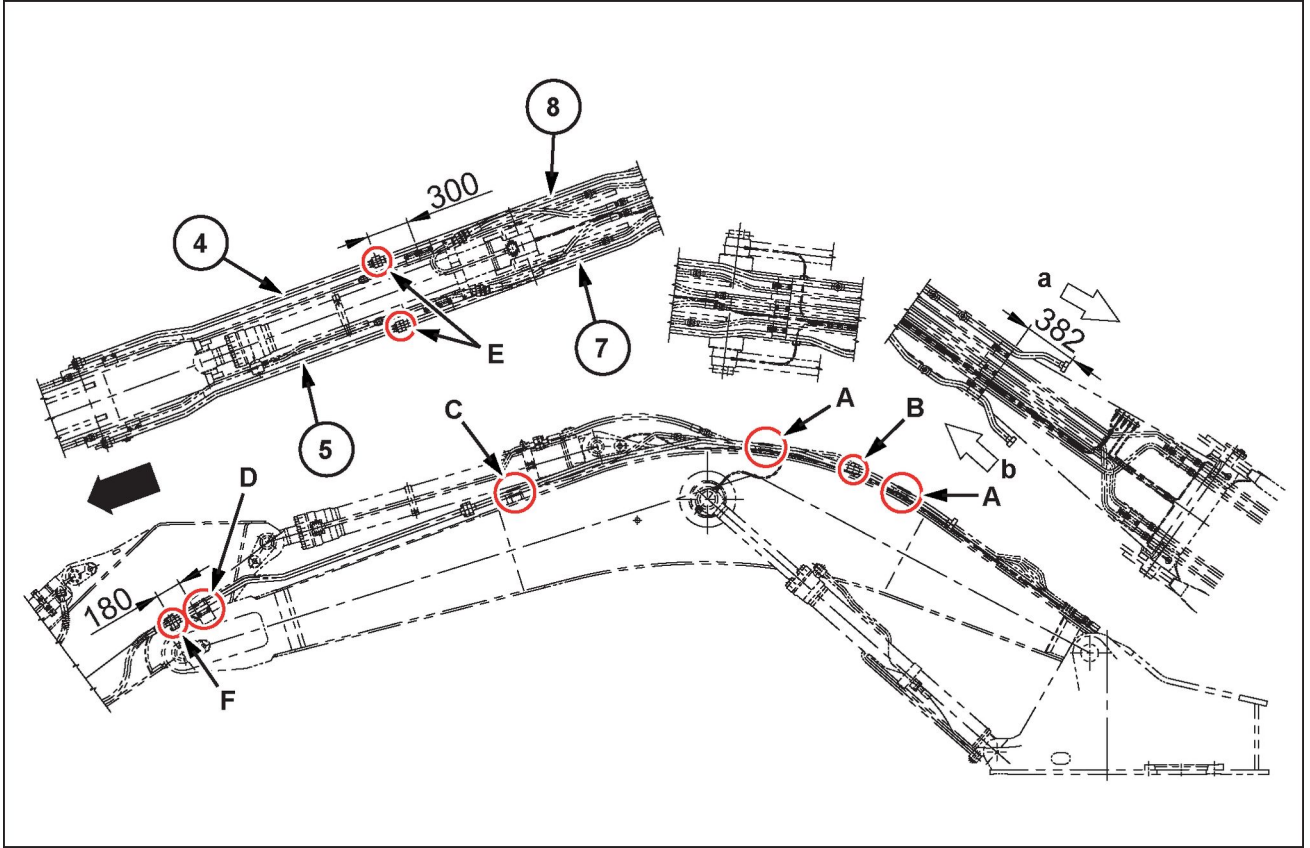
- Please note: If there is no response to CLICKING the link, please download this PDF first and then click on it.

CLICK HERE TO **DOWNLOAD** THE COMPLETE MANUAL

3 - ASSEMBLY

MULTI-PURPOSE PLUS THREE-WAY VALVE KIT

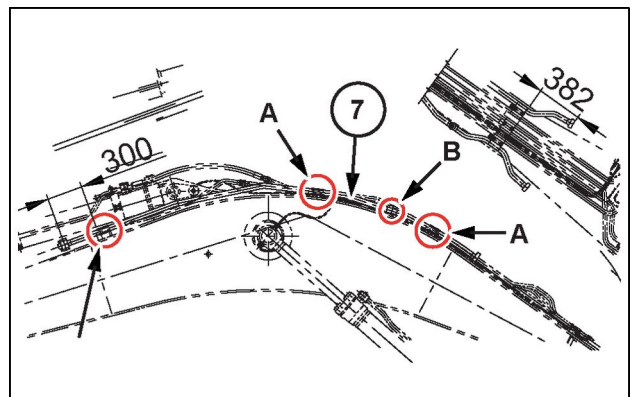
Boom line installation



SML15CEX9808FB 1

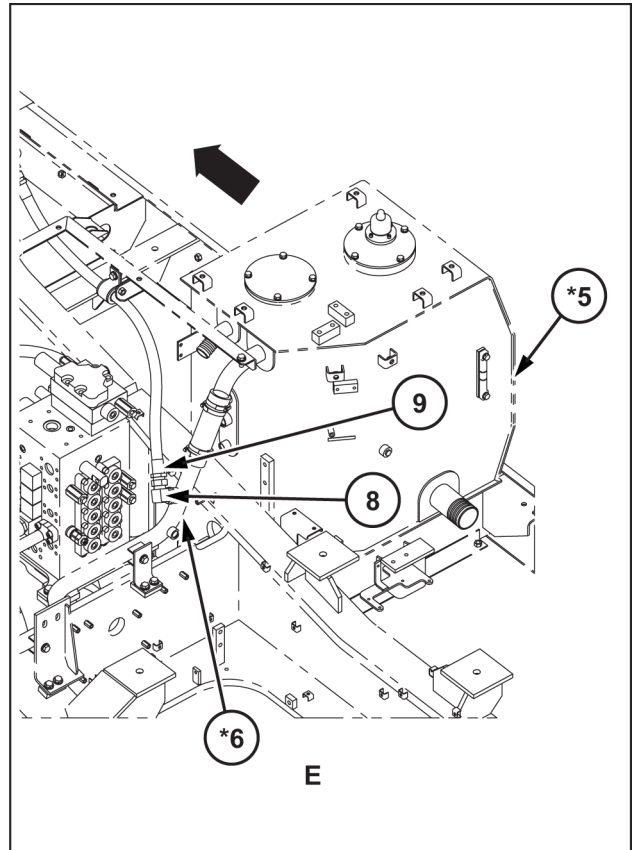
Line Assemblies (6) (7)

1. Set the line assembly (left) (7) on the boom.



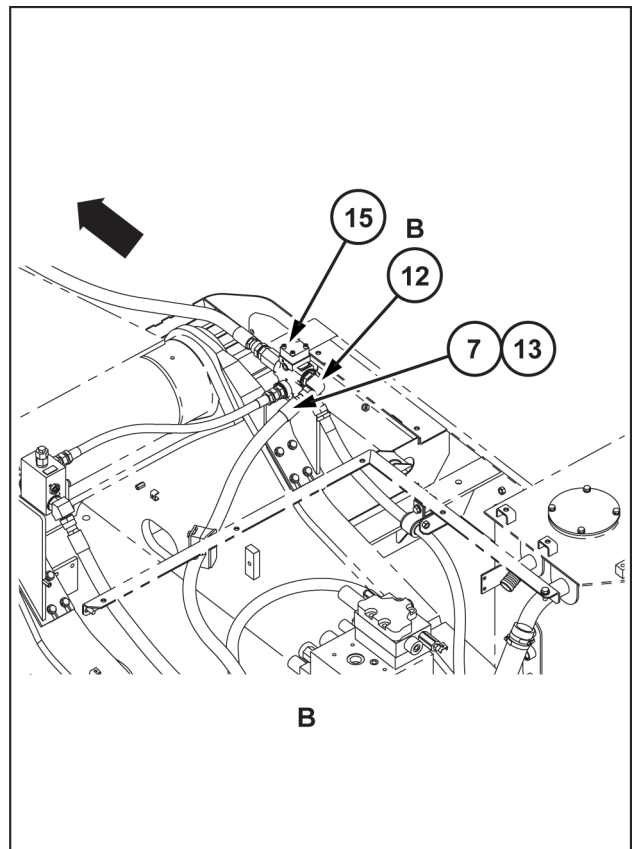
SML15CEXX28AB 2

9. Install the elbow (8) on the hydraulic oil reservoir (*5) return and oil cooler line (*6), then connect the hydraulic hose (9).



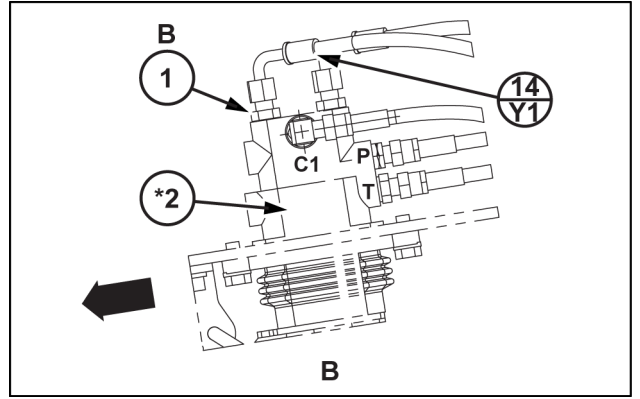
SMIL15CEXXX40BB 11

10. Install the elbow (12) on the three-direction valve (15) B port.
11. Set the O-ring (7) on the elbow (12) and connect the hydraulic hose (13).



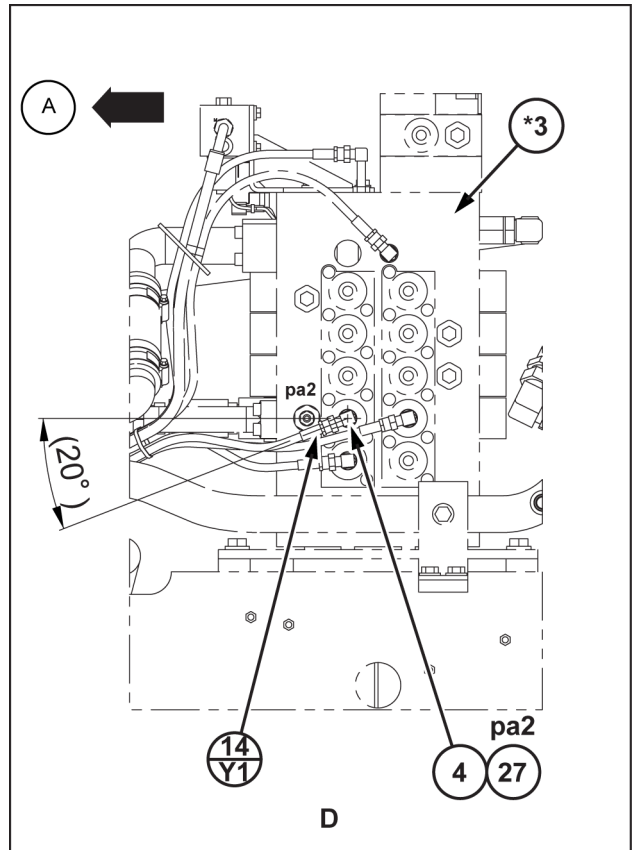
SMIL15CEXXX41BB 12

12. Install the hose adapter (1) on the remote control valve (*2) B port.



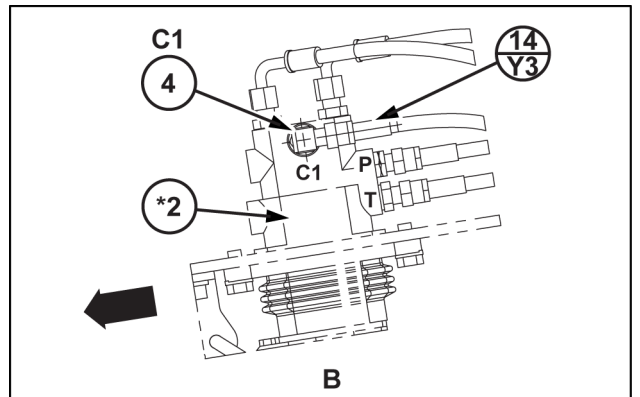
SMIL15CEXXX57AB 11

13. Install the stud (27) on the control valve (*3) pa2 port and connect the elbow (4).
 (A): left side of the vehicle
14. Connect the assembly hose (14) (Y1) to the remote control valve (*2) B port and control valve (*3) pa2 port.



SMIL15CEXXX58BB 12

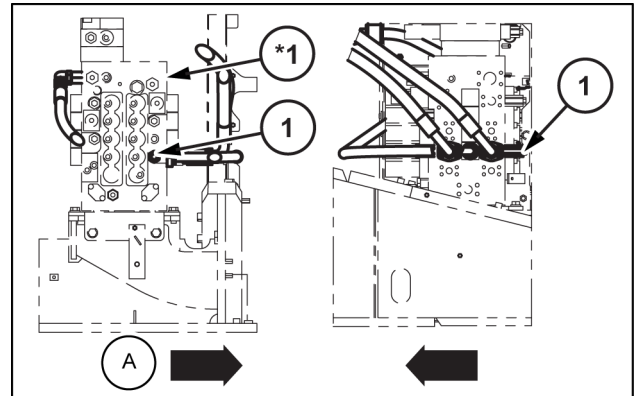
15. Install the elbow (4) on the remote control valve (*2) C1 port.



SMIL15CEXXX59AB 13

Port relief valve installation

1. Remove the plug, and then install the 2 port relief valves **(1)** on the control valve **(*1)**.
(A): left side of the vehicle
Tightening torque: **78.4 - 88.3 N·m (57.8 - 65.1 lb ft)**
2. After installing the port relief valves **(1)**, adjust the relief pressure to match the end attachment used. (See the Service Manual.)



SMIL15CEXX74AB 1

内容

1 套件所含物品

套件所含物品.....	1-1
-------------	-----

2 预装配

准备装配

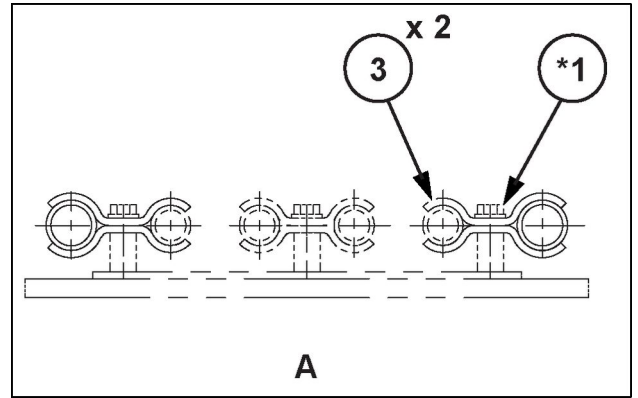
准备.....	2-1
---------	-----

3 装配

多功能增强版三通阀套件

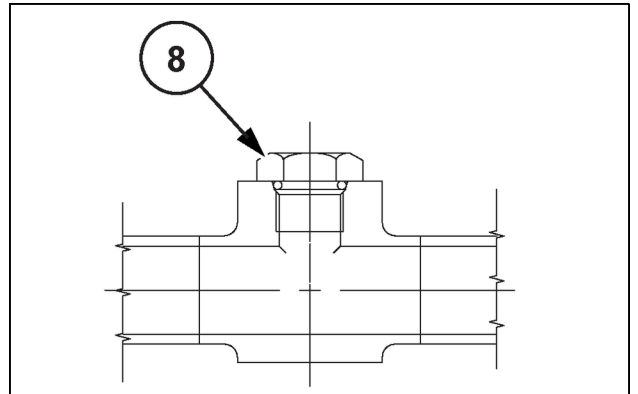
安装臂杆管路.....	3-1
安装上部主管路.....	3-6
安装保养阀 (远程控制阀)	3-15
先导管路安装.....	3-17
线束安装.....	3-28
安装端口卸压阀.....	3-31
安装储箱指示器传感器 (过滤器堵塞警告)	3-32
地板垫的额外处理.....	3-34
粘贴驾驶室內的铭牌.....	3-35

2. 用两个管道夹具 (3) 在两个位置夹住管路总成 (右) (6), 然后用两颗 sems 螺栓 (*1) 在每个位置进行紧固。
- 从管路总成 (右) (6) 的末端在位置 382 mm (15.039 in) 紧固管道夹具 (3)。



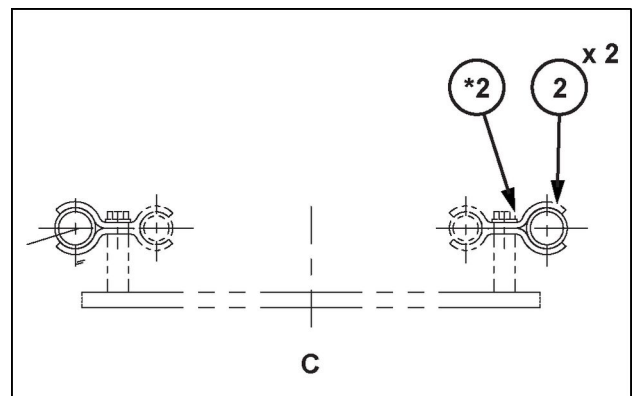
SMIL15CEX9814AB 7

3. 将两个塞子 (8) 安装到管路总成 (左) (6) 上。



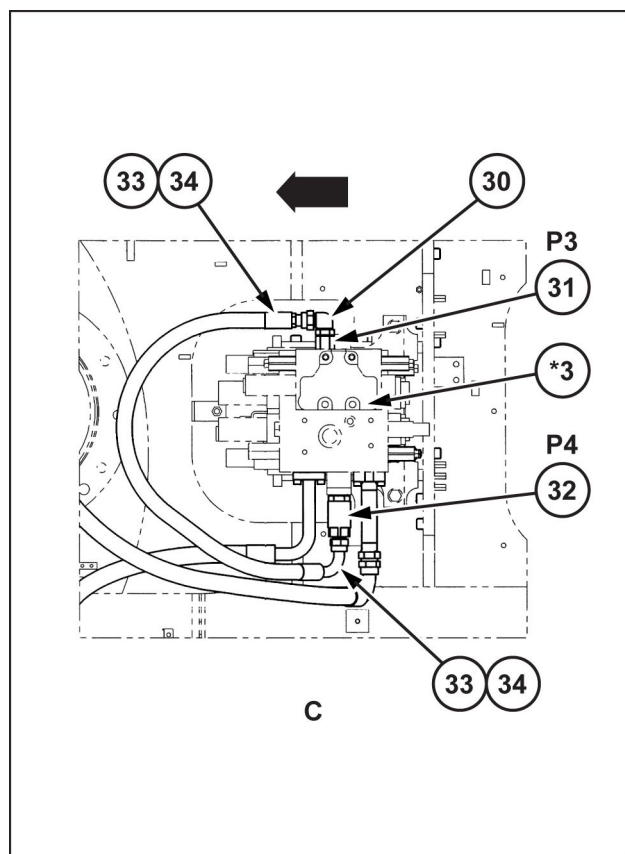
SMIL15CEX9815AB 8

4. 用两个管道夹具 (2) 夹住管路总成 (右) (6), 然后用两颗 sems 螺栓 (*2) 进行紧固。从管路总成 (左) (7) 的末端在位置 300 mm (11.811 in) 紧固管道夹具 (2)。



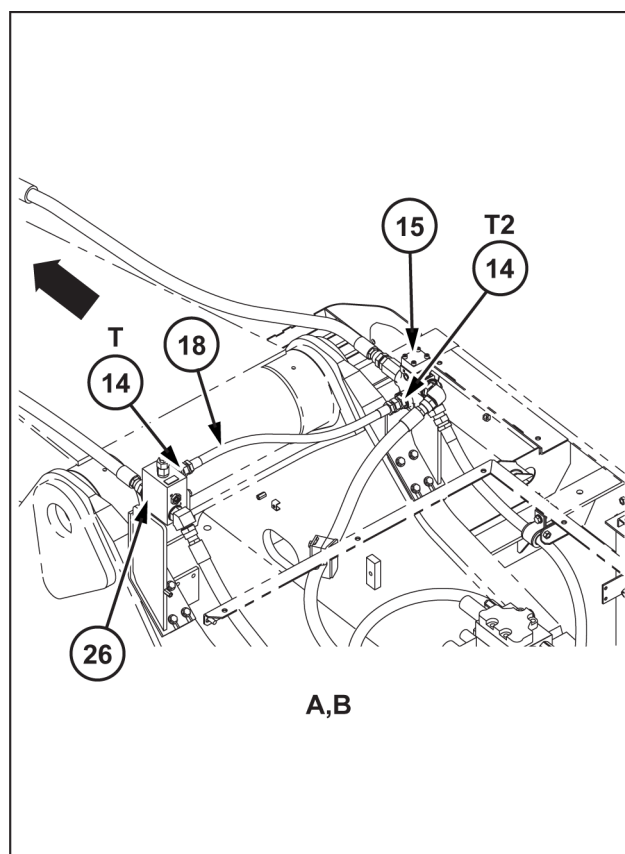
SMIL15CEX9816AB 9

15. 在控制阀 (*3) P4 端口上单向阀 (32)。
16. 将 O 形密封圈 (34) 固定在单向阀 (32) 上, 并连接液压软管 (33)。
拧紧扭矩: 157 - 193 N·m (115.8 - 142.3 lb ft)
17. 在控制阀 (*3) P3 端口上安装专用套筒 (31), 并连接弯管 (30)。
18. 将 O 形密封圈 (34) 固定在弯管 (30) 上, 并连接液压软管 (33)。
。拧紧扭矩: 157 - 193 N·m (115.8 - 142.3 lb ft)



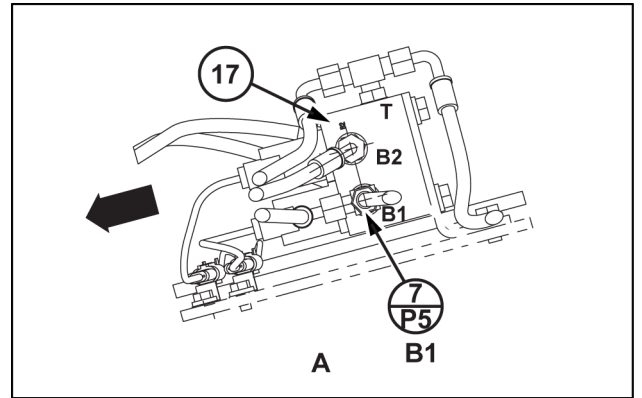
SMIL15CEXXX44BB 15

19. 在关断阀 (26) T 端口上安装软管接头 (14)。
20. 在三向阀 (15) T2 端口上安装软管接头 (14)。
21. 将关断阀 (26) T 端口和三向阀 (15) T2 端口与液压软管 (18) 连接。

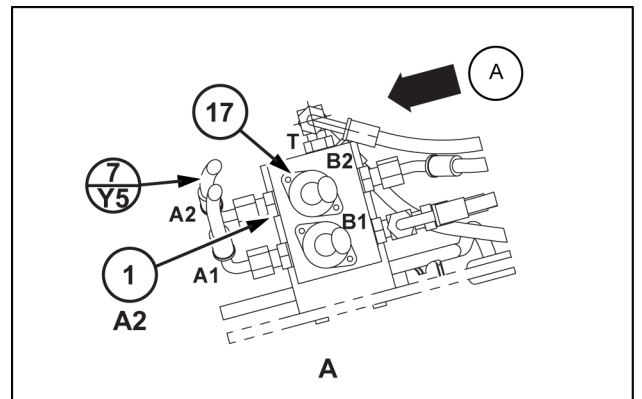


SMIL15CEXXX45BB 16

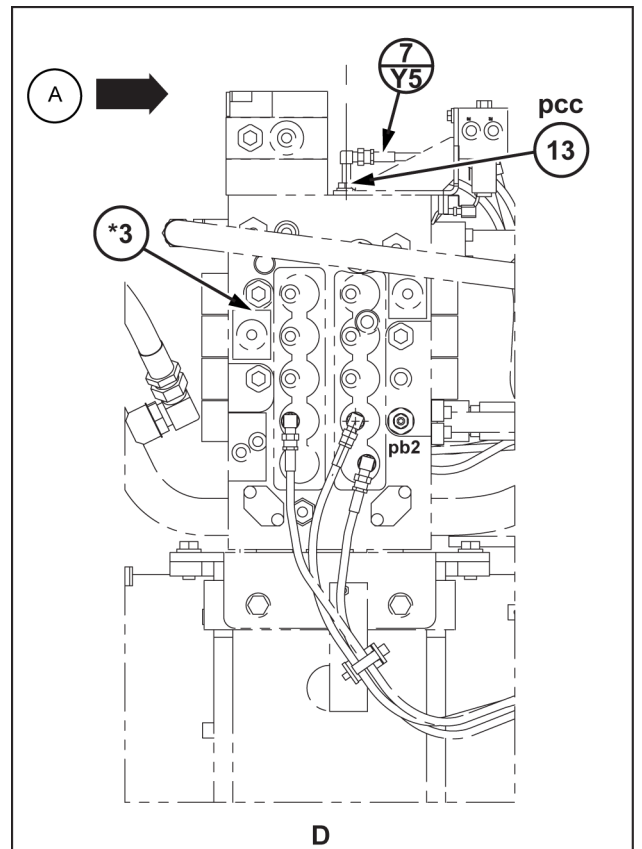
21. 将电磁阀 (17) B1 端口和歧管 (*4) P5 端口与装配软管 (7) (P5) 连接。



22. 在电磁阀 (17) A2 端口上安装软管接头 (1)。
(A) : 车辆左侧



23. 在控制阀 (*3) pcc 端口上安装长弯管 (13)。
(A) : 车辆左侧
24. 将电磁阀 (17) A2 端口和控制阀 (*3) pcc 端口与装配软管 (7) (Y5) 连接。



CLICK HERE TO **DOWNLOAD** THE COMPLETE MANUAL

- Thank you very much for reading the preview of the manual.
- You can download the complete manual from: www.heydownloads.com by clicking the link below



- Please note: If there is no response to CLICKING the link, please download this PDF first and then click on it.

CLICK HERE TO **DOWNLOAD** THE COMPLETE MANUAL