



## **INSTALLATION INSTRUCTIONS**

**KG2RP459-00  
BREAKER CIRCUIT PEDAL KIT**

**APPROXIMATE INSTALLATION TIME: 28.0 hours**

CLICK HERE TO **DOWNLOAD** THE COMPLETE MANUAL

- Thank you very much for reading the preview of the manual.
- You can download the complete manual from: [www.heydownloads.com](http://www.heydownloads.com) by clicking the link below



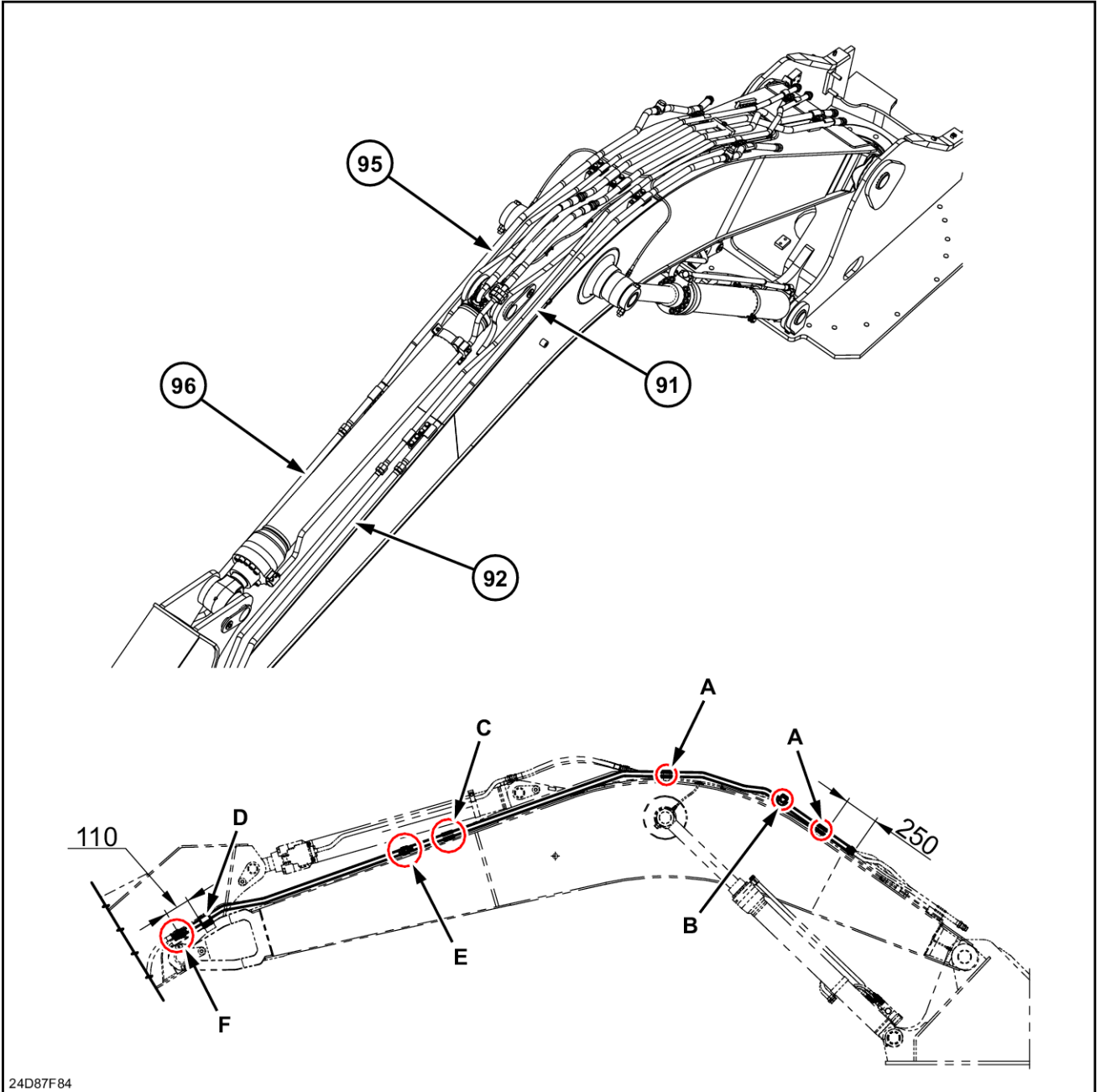
- Please note: If there is no response to CLICKING the link, please download this PDF first and then click on it.

CLICK HERE TO **DOWNLOAD** THE COMPLETE MANUAL

# 3 - ASSEMBLY

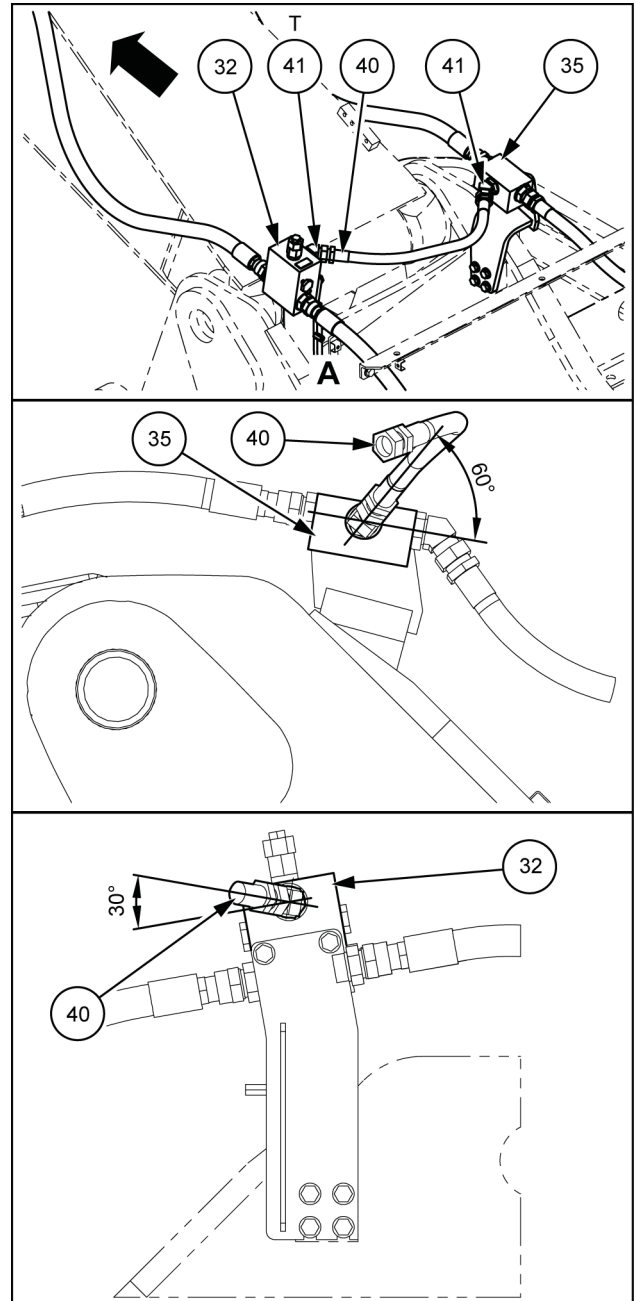
## BREAKER CIRCUIT PEDAL KIT

### Boom line installation



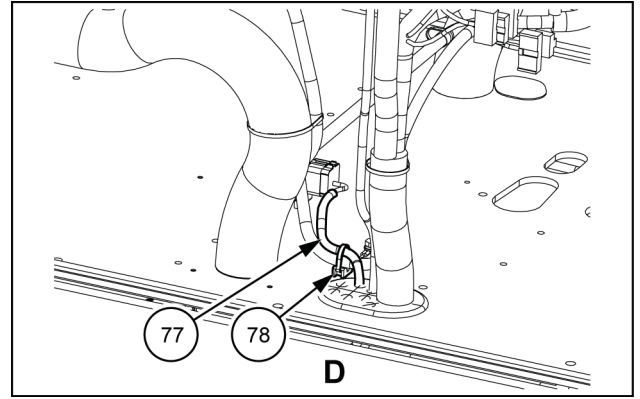
24D87F84 1

6. Install the elbow (41) on the relief valve (32) T port.  
 Install the elbow (41) on the manifold (35) relief valve side.  
 Connect the relief valve (32) T port and manifold (35) relief valve side with the hydraulic hose (40).



5. Extend the option (pedal) wire harness (**77**) to the floor side from under the cab.

Connect the option (pedal) wire harness (**77**) connector (16-pin) to the cab main harness and fasten with the wire band (**78**).



SMIL15CEX2504AB 7

# 1 - SATZINHALT

## Satzinhalt

**HINWEIS:** Bitte beziehen Sie sich zum Bestellen von Ersatzteilen auf das Teilehandbuch.

### Wartungsventil (siehe 3-12)

Gegenstand	Beschreibung	Anzahl	Teilereferenz
4	Zusatzsteuerventil	1	KHJ24720
5	Schraube mit unverlierbarer Unterlegscheibe M10 x 25	2	105R010Y025R
6	Rechte Pedalhalterung (Option)	1	KHJ24740
7	Pedalhalterung (Option)	1	KHJ24780
8	Innensechskantschraube	2	KHJ1104
9	Hochfeste Unterlegscheibe M10	2	KHJ0183
10	Zusatzausstattungs-Pedal	1	KHJ13850
11	Innensechskantschraube M10x30	2	KHJ24800
12	Hochfeste Unterlegscheibe M10	2	KHJ0183
14	Sperrenhalterung	1	KHJ10711
15	Innensechskantschraube M10x16	2	108R010Y016R
16	Hochfeste Unterlegscheibe M10	2	KHJ0183
17	Sperrhebel	1	KHJ10701
18	Druckfeder	1	KHJ10721
19	Hochfeste Mutter M8	1	KHJ0091
20	Flache Unterlegscheibe M8	1	KHN0420
21	Pedal-Kunststoffabdeckung	1	KHP0912

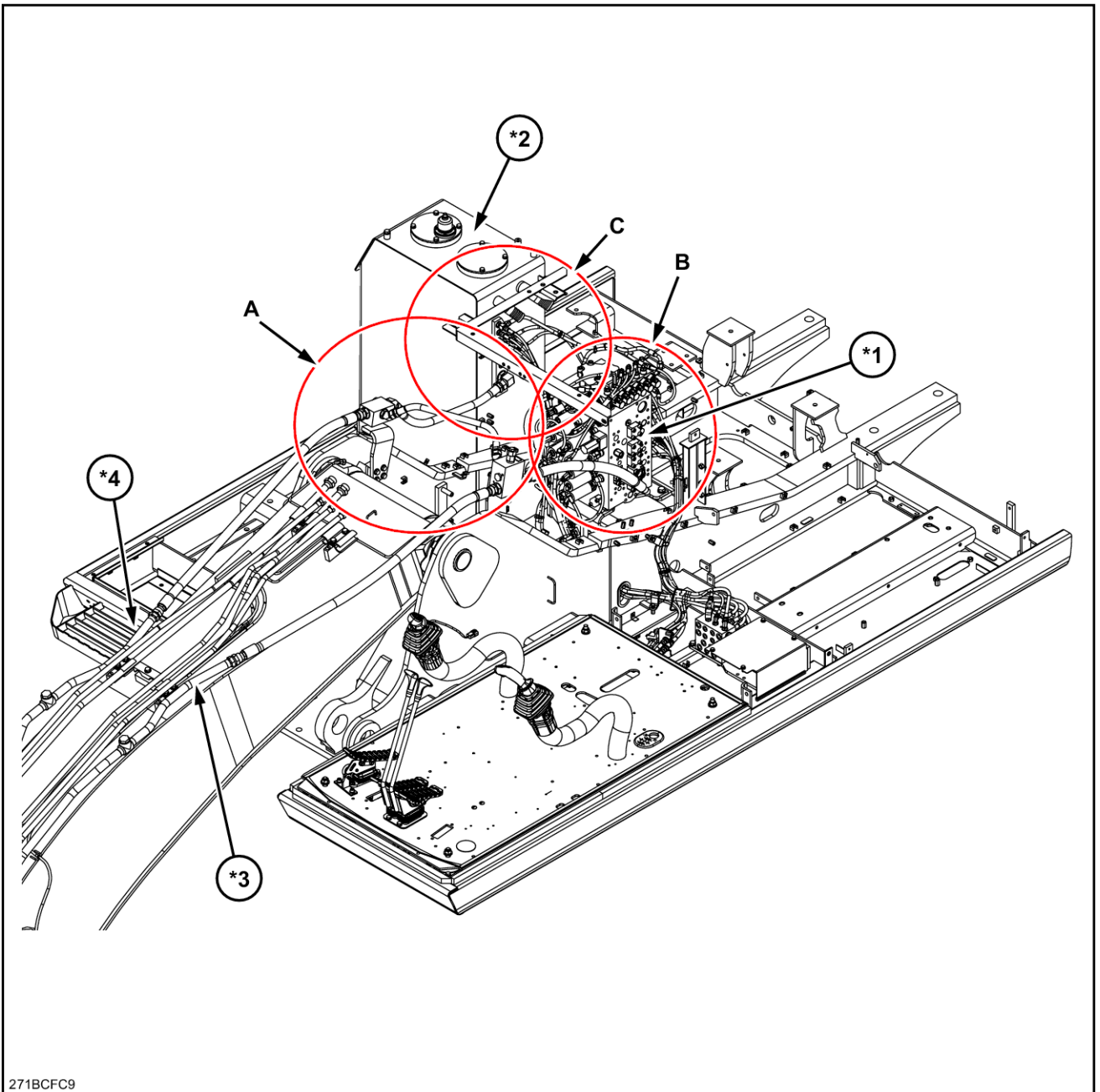
### Schutzauptschaltkreis (siehe 3-5)

Gegenstand	Beschreibung	Anzahl	Teilereferenz
24	Hydraulikschlauch	1	KRJ36930
25	O-Ring	1	KHJ0914
26	Geteilter Flansch G1	2	KRJ2682
27	Innensechskantschraube M10x30	4	108R010Y030R
28	Schlauchadapter	3	KHJ1349
29	O-Ring	5	KHJ1361
30	Halterung	1	KRJ11470
31	Schraube mit unverlierbarer Unterlegscheibe M12x30	12	105R012Y030R
32	Überdruckventil	1	KHJ15050
34	Hydraulikschlauch	2	KSJ13741
35	Verteiler	1	KRJ16400
38	Halterung	1	KRJ16050
40	Hydraulikschlauch	1	KRJ11540
41	Winkelstück G3/4	2	KHJ0351
42	Hydraulikschlauch	1	KRJ37590
43	Langes Winkelstück	1	KHJ24380
44	Schlauchadapter G1	1	KNJ0606
45	Kabelbinder ( L = 250))	1	KHH0142

### Schutzschaltsteuerschaltkreis (siehe 3-14)

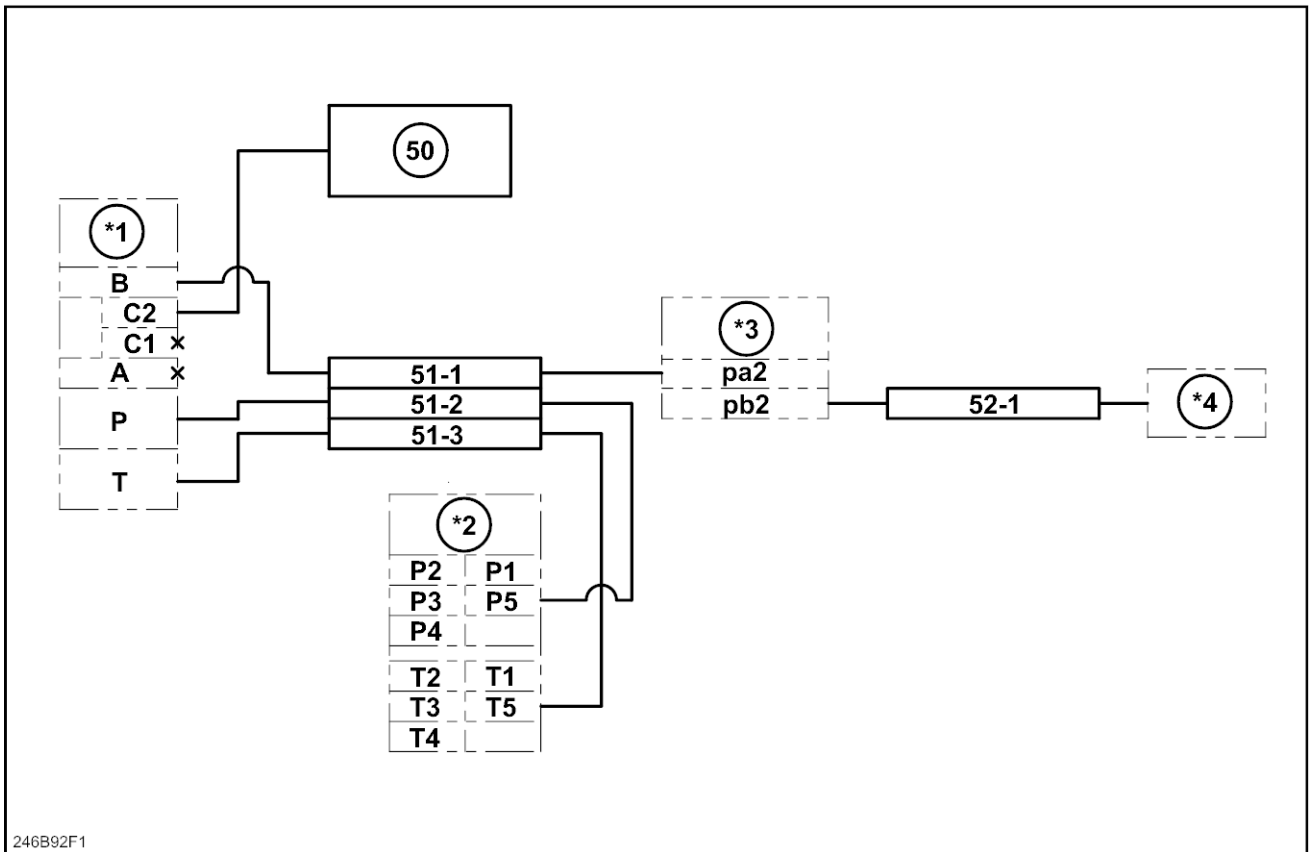
Gegenstand	Beschreibung	Anzahl	Teilereferenz
47	Nippel mit Filter G1/4	1	CNA0584
48	Schlauchadapter G1/4	3	KNJ0758
49	Stopfen G1/4	2	KHJ0363

# Einbau der oberen Hauptleitung



271BCFC9

271BCFC9 1

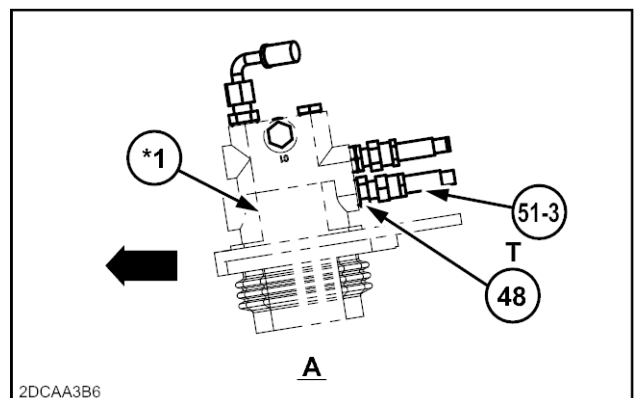


246B92F1 3

- \*1. Zusatzsteuerventil
- \*2. Verteiler

- \*3. Steuerventil
- \*4. Hydraulikbehälter

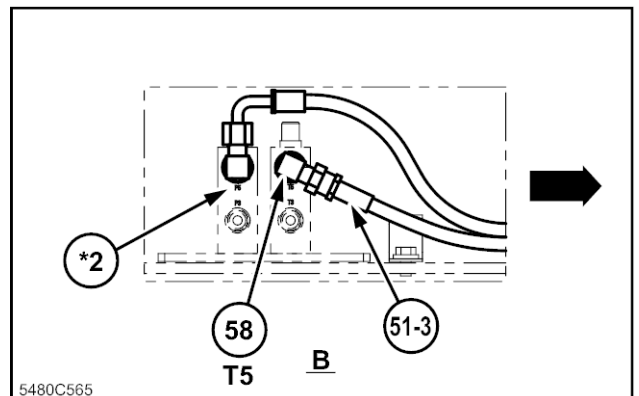
1. Montieren Sie den Schlauchadapter (48) am Anschluss T des Zusatzsteuerventils (\*1).



2DCAA3B6 4

2. Montieren Sie das Kniestück (58) am Verteiler (\*2), Anschluss T5.

Verbinden Sie den Anschluss T des Zusatzsteuerventils (\*1), und den Verteiler (\*2), Anschluss T5, mit dem Nylonschlauch (51-3).



5480C565 5

# Index

---

## E

Einbau der Auslegerleitung . . . . .	3-1
Einbau der oberen Hauptleitung . . . . .	3-5
Einbau des Behälteranzeigesensors (Filterverstopfungswarnung) . . . . .	3-22

## M

Montage der Steuerleitung für das Betriebsventil (Zusatzsteuerventil) . . . . .	3-14
Montage des Betriebsventils (Zusatzsteuerventil) . . . . .	3-12
Montage des Kabelbaums für das Betriebsventil (Zusatzsteuerventil) . . . . .	3-19
Montage des Typenschildes in der Kabine . . . . .	3-23

## S

Satzinhalt . . . . .	1-1
----------------------	-----

## V

Vorbereitung . . . . .	2-1
------------------------	-----

## 2 - AVANT-ASSEMBLAGE

### PREPARATION POUR L'ASSEMBLAGE

#### Préparation

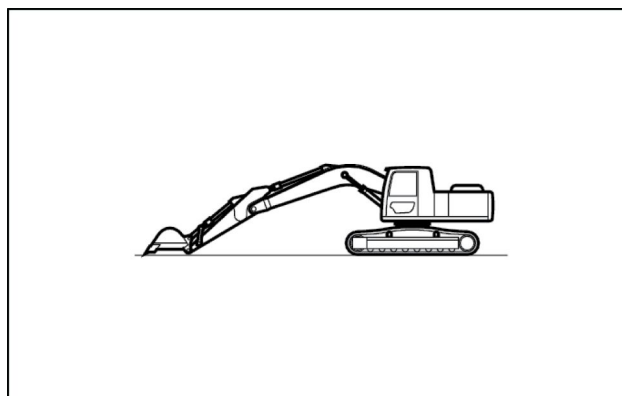
Un signe « \* » dans ce document indique que la pièce est montée sur la machine réelle.

Éléments à préparer :

- Clés ( **13 mm**, **17 mm**, **19 mm**, **36 mm**, **41 mm**, **46 mm**, **50 mm**)
- Clés hexagonales ( **8 mm**, **12 mm**)
- Tournevis cruciforme (N°3)
- Lames coupantes, ciseaux
- Chiffon

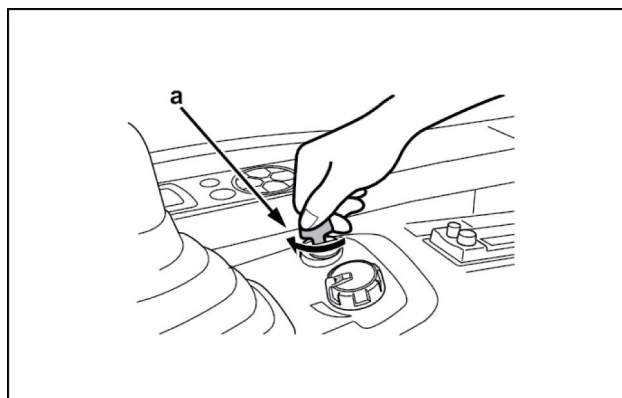
#### 1. Positionnement de la machine.

- Placer l'unité principale sur un sol ferme et plat, amenez le vérin de godet en fin de course d'ouverture, le vérin de balancier en fin de course de sortie, abaissez la flèche et amenez l'extrémité du balancier en contact avec le sol.



SMIL13II00106AA 1

#### 2. Placer la clé de contact (**a**) sur OFF (arrêt), vérifier que le moteur est bien arrêté, puis remettre le contact. (Ne pas démarrer le moteur.)



SMIL13II00107AA 2

CLICK HERE TO **DOWNLOAD** THE COMPLETE MANUAL

- Thank you very much for reading the preview of the manual.
- You can download the complete manual from: [www.heydownloads.com](http://www.heydownloads.com) by clicking the link below

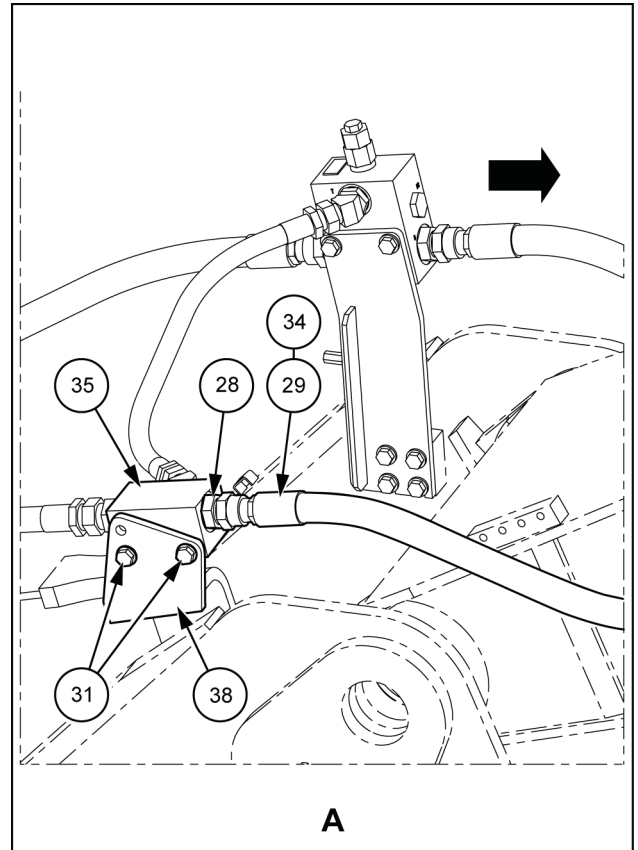


- Please note: If there is no response to CLICKING the link, please download this PDF first and then click on it.

CLICK HERE TO **DOWNLOAD** THE COMPLETE MANUAL

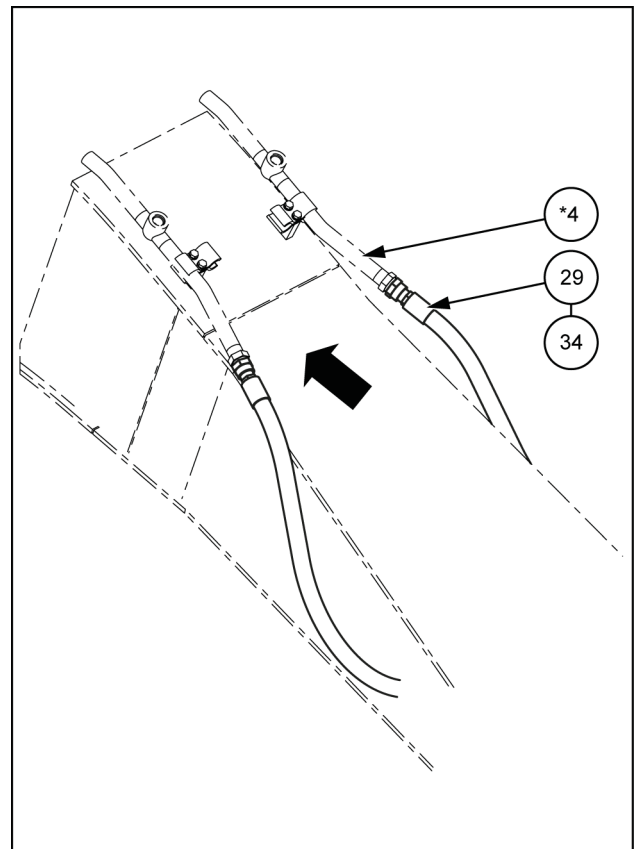
- Poser le collecteur (35) sur le support (38) à l'aide de deux vis Sems (31). Mettre en place l'adaptateur de flexible (28) sur le côté ensemble de conduite (droite) (\*4) du collecteur (35).

Placer le joint torique (29) sur l'adaptateur de flexible (28) et raccorder le flexible hydraulique (34).



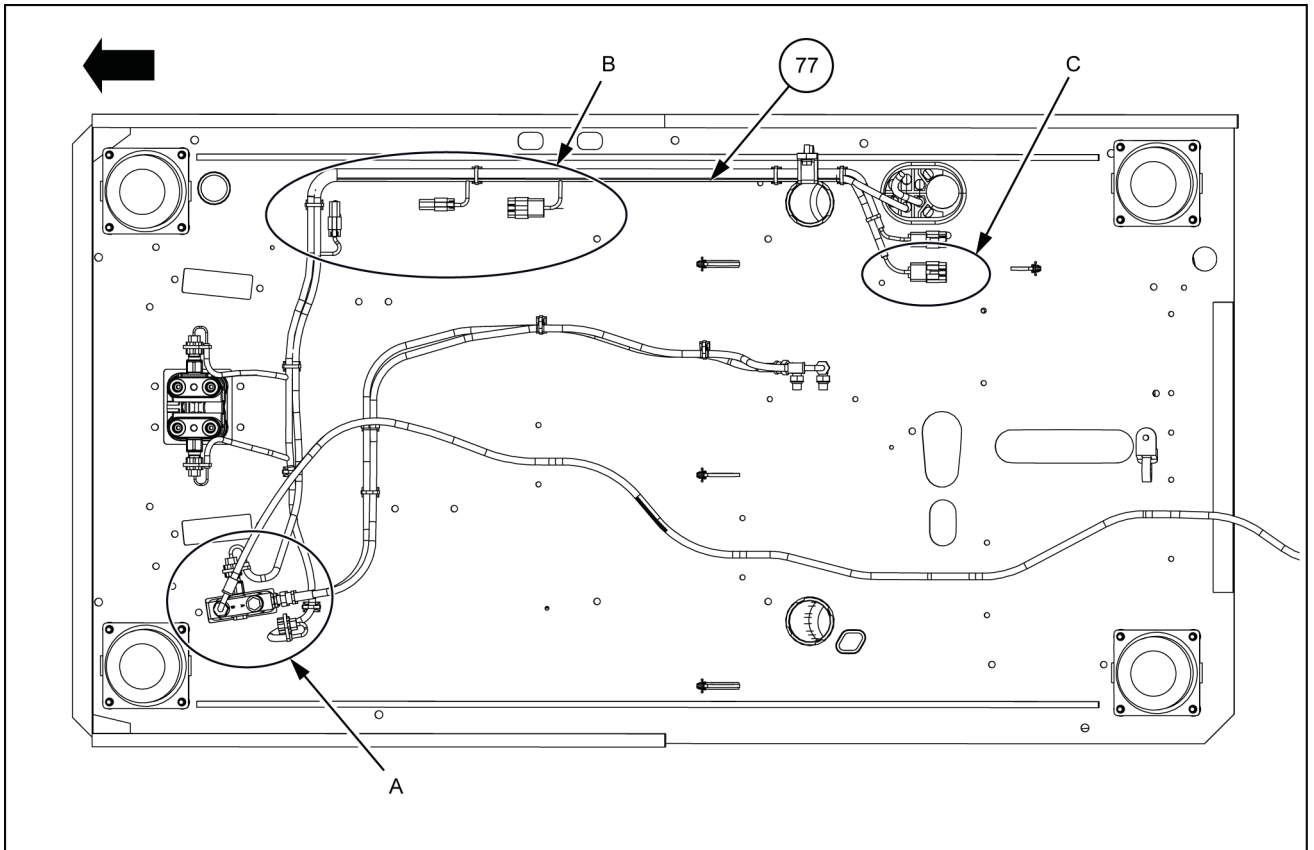
SMIL15CEX2482BB 8

- Placer le joint torique (29) sur le flexible hydraulique (34) et raccorder à l'ensemble conduite (\*4).

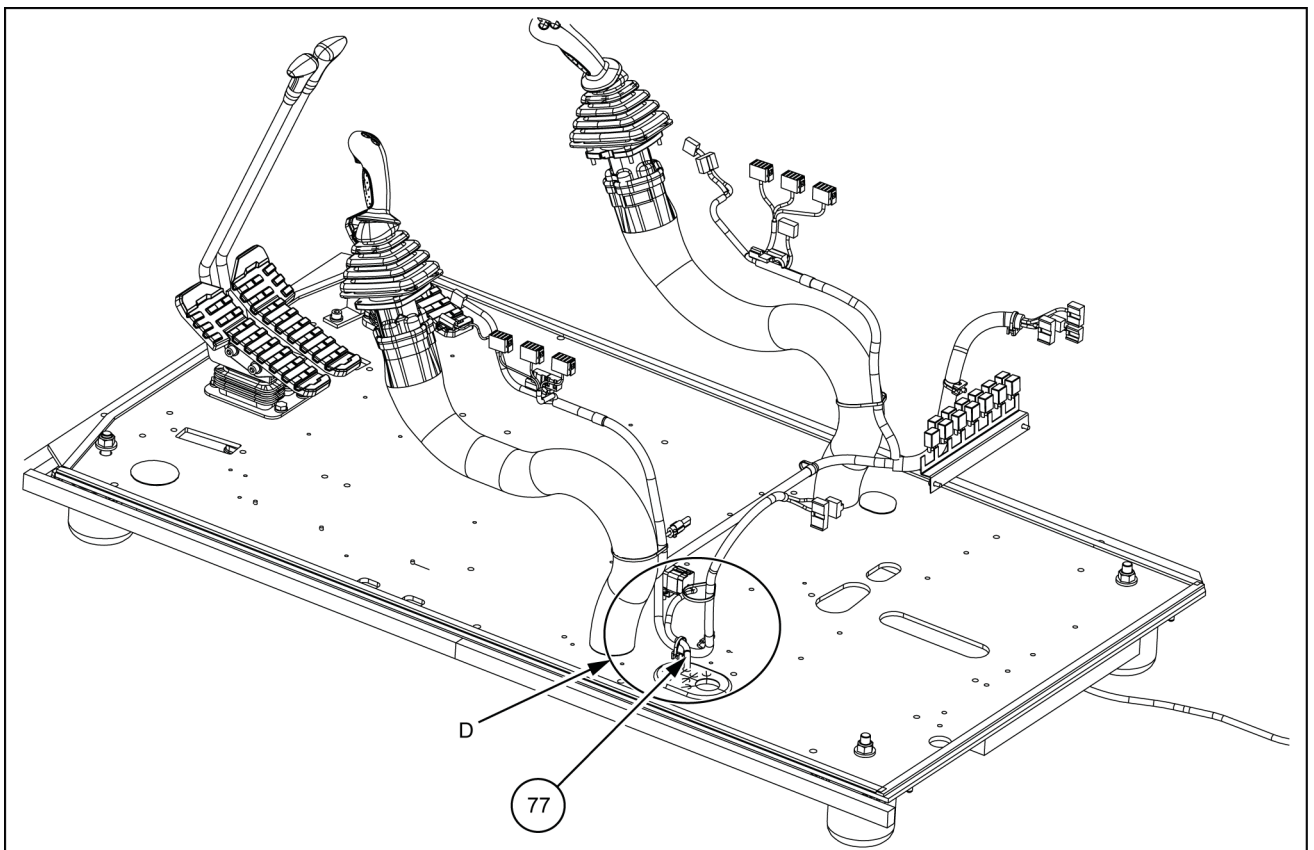


SMIL15CEX2483BB 9

# Installation du faisceau du distributeur de service (distributeur auxiliaire)



SMIL15CEX2499FB 1



SMIL15CEX2500FB 2

# Contenuto

---

## 1 CONTENUTO DEL KIT

Contenuto del kit .....	1-1
-------------------------	-----

## 2 PRE-ASSEMBLAGGIO

### OPERAZIONI PRELIMINARI PER IL MONTAGGIO

Preparazione .....	2-1
--------------------	-----

## 3 MONTAGGIO

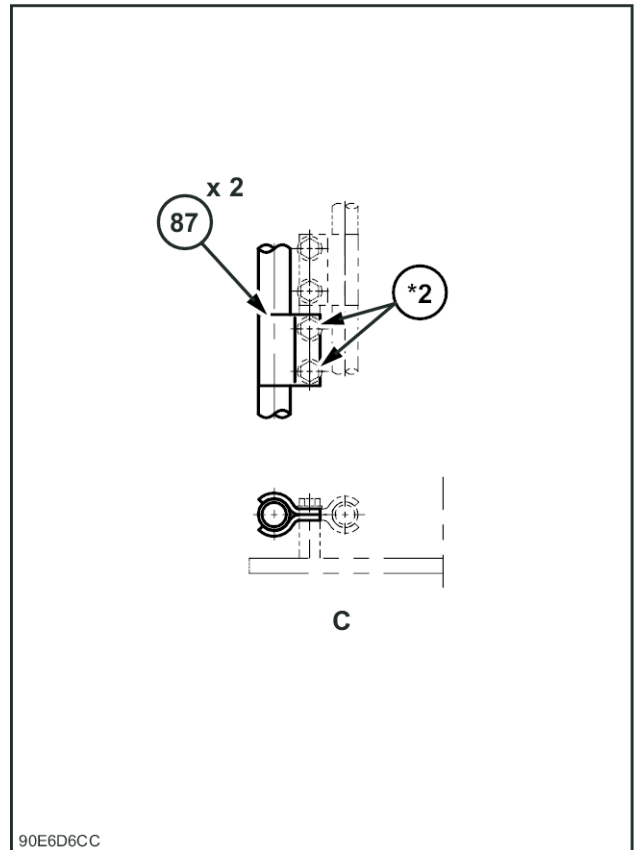
### KIT PEDALE CIRCUITO DEMOLITORE

Montaggio della tubazione del braccio .....	3-1
Montaggio della tubazione principale superiore .....	3-5
Montaggio valvola di servizio (distributore idraulico ausiliario) .....	3-12
Montaggio tubazione pilota valvola di servizio (distributore idraulico ausiliario) ..	3-14
Montaggio cablaggio valvola di servizio (distributore idraulico ausiliario) .....	3-19
Montaggio sensore indicatore serbatoio (avvertenza ostruzione filtro) .....	3-22
Montaggio della targhetta all'interno della cabina .....	3-23

4. Unire il complessivo tubazione (lato sinistro) (91) con due fascette stringitubi (87), quindi fissare con due bulloni tipo Sems (\*2).

  - Fissare la fascetta stringitubi (87) in un punto a **285 mm (11.2 in)** dall'estremità anteriore del complessivo tubazione (lato sinistro) (91).

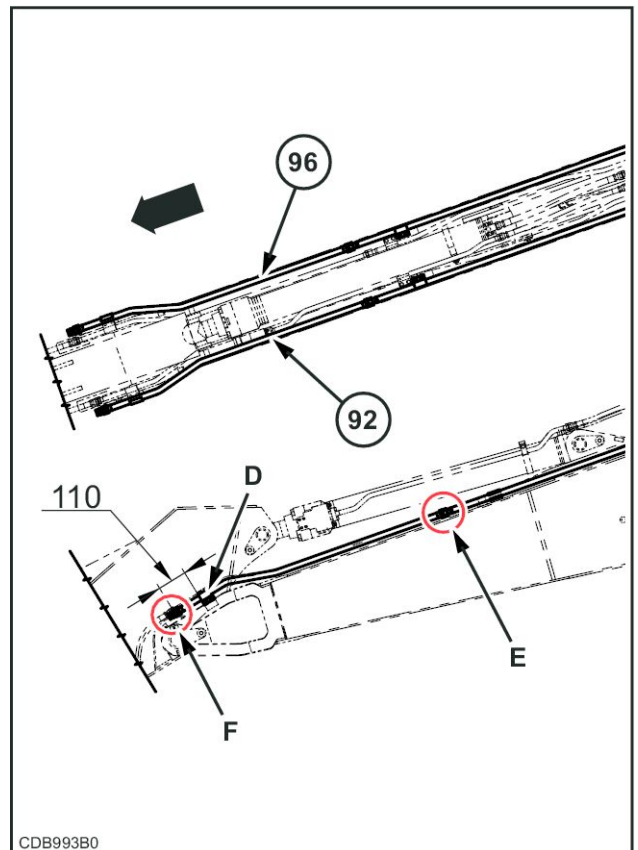
5. Montare il complessivo tubazione (lato destro) (95) allo stesso modo del complessivo tubazione (lato sinistro) (91).



90E6D6CC 5

### Complessivi tubazione (92) e (96)

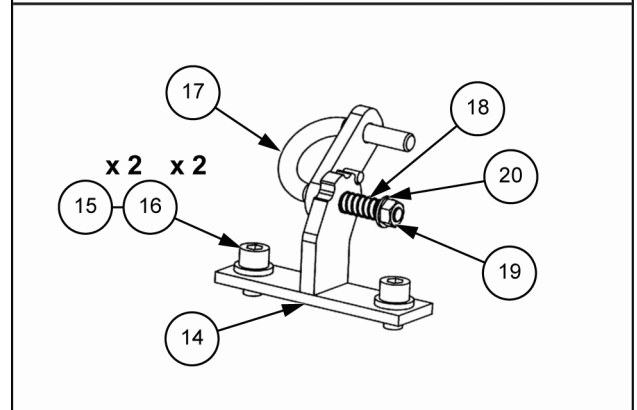
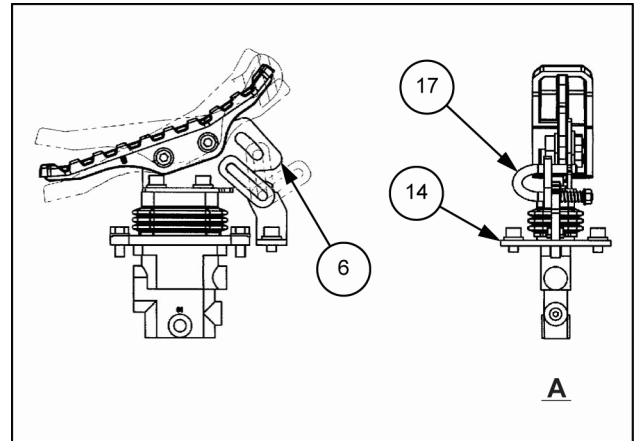
1. Posizionare il complessivo tubazione (lato sinistro) (92).



CDB993B0 6

3. Posizionare la leva di bloccaggio (17) e la molla a compressione (18) sulla staffa di bloccaggio (14), quindi serrare con il dado ad alta resistenza (19) e la rondella piana (20).

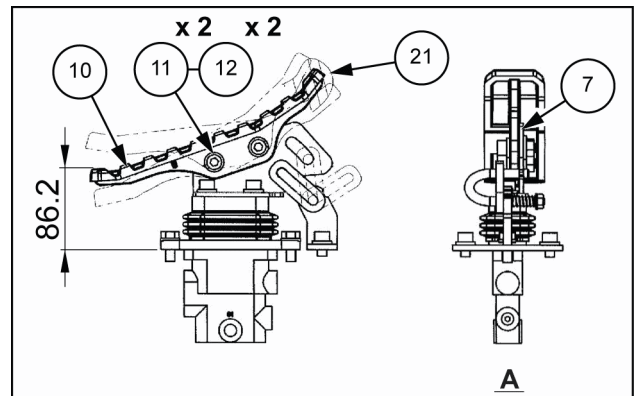
Montare la leva di bloccaggio (17) sulla scanalatura della staffa del pedale lato destro opzionale (6), quindi montare la staffa di bloccaggio (14) sul pianale con due bulloni a testa esagonale incassata (15) e due rondelle ad alta resistenza (16).



SMIL14II01009BB 3

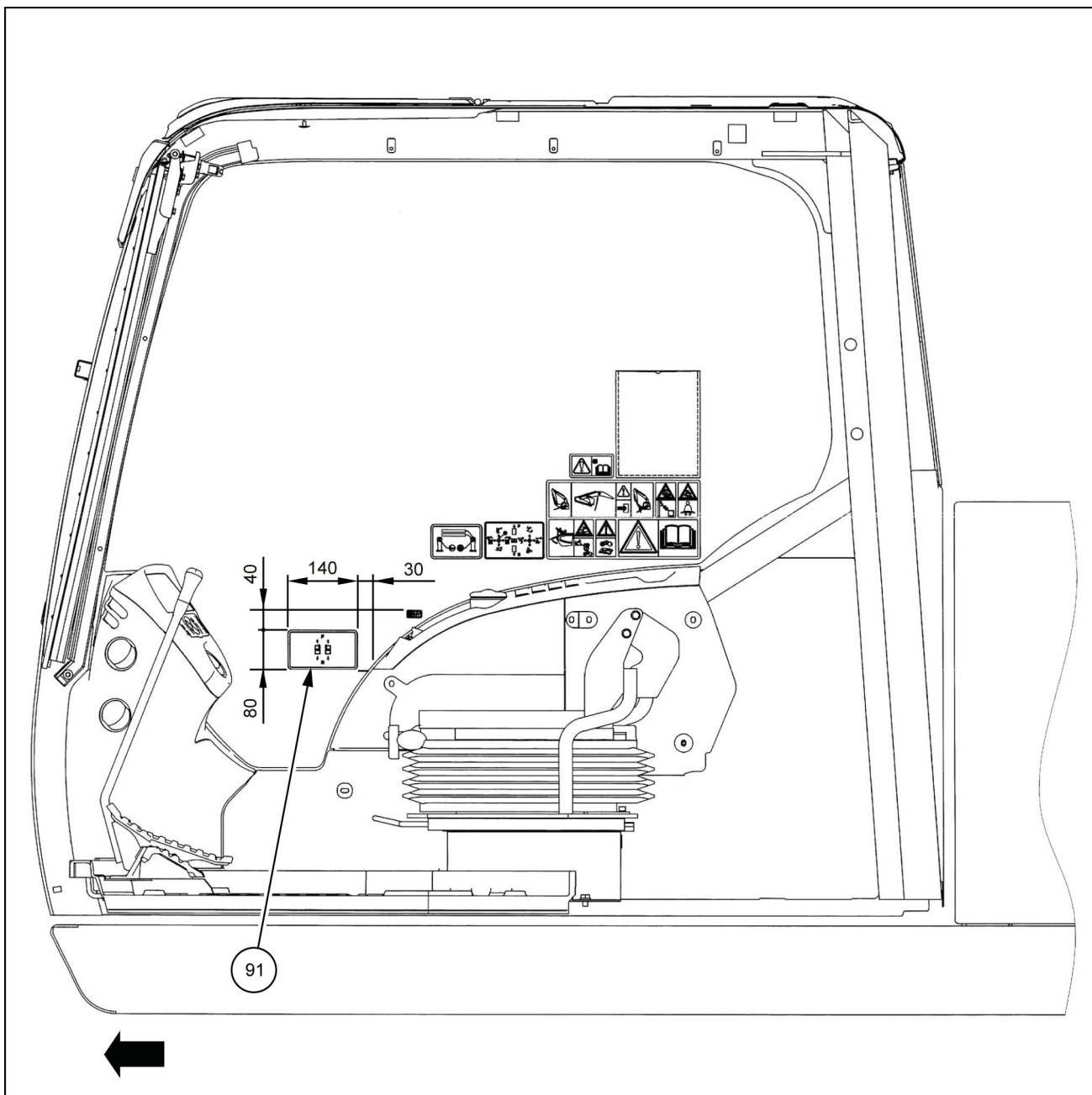
4. Montare la staffa del pedale opzionale (7) e il pedale opzionale (10) con due viti a brugola (11) e due rondelle ad alta resistenza (12).

Coprire il pedale opzionale (10) con il coperchio in plastica (21).



SMIL14II01010AB 4

## Montaggio della targhetta all'interno della cabina



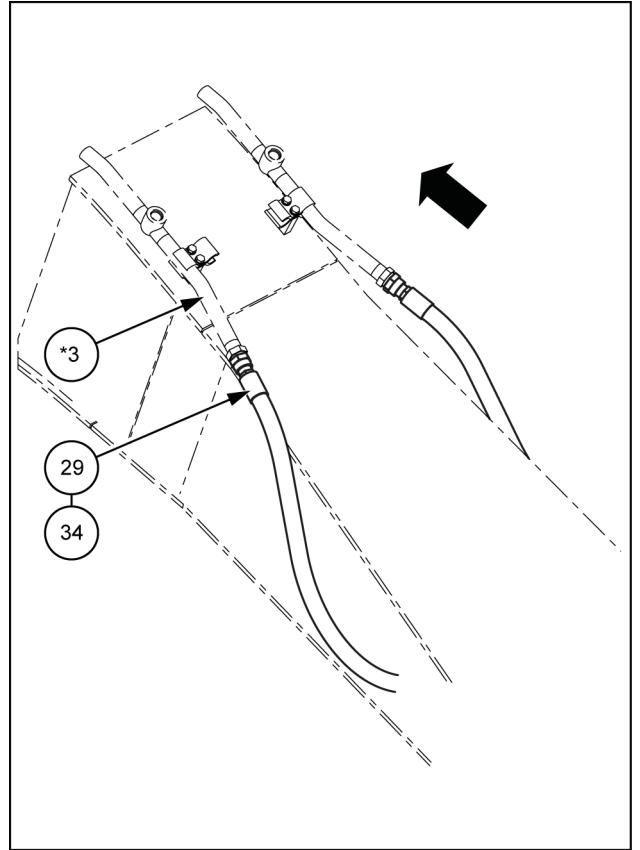
SMIL15CEX3040F 1

1. Con un panno, rimuovere eventuale sporcizia presente nel punto in cui verrà incollata l'etichetta.
2. Applicare l'etichetta di funzionamento del comando a pedale ( ISO ) (91).

**Tapón (véase 3-1)**

<b>Artículo</b>	<b>Descripción</b>	<b>Cantidad</b>	<b>Referencia</b>
100	Tapón	2	KHJ1899
101	Junta tórica	2	KHJ1361

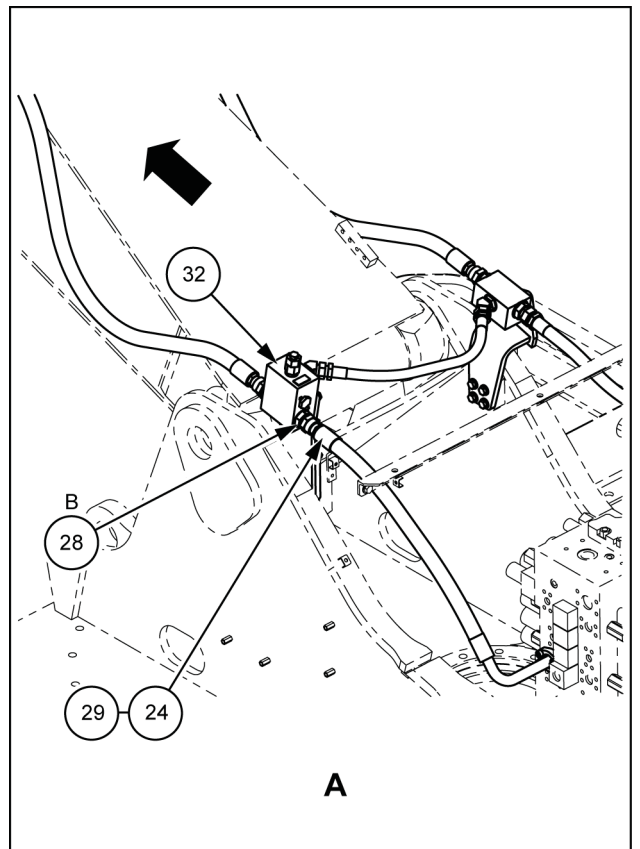
3. Coloque la junta tórica (29) en la manguera hidráulica (34) y conéctela al conjunto del conducto (izquierda) (\*3).



SMIL15CEX2478BB 4

4. Monte el adaptador para mangueras (28) en el puerto B de la válvula de seguridad (32).

Coloque la junta tórica (29) en el adaptador para mangueras (28) e instale la manguera hidráulica (24).

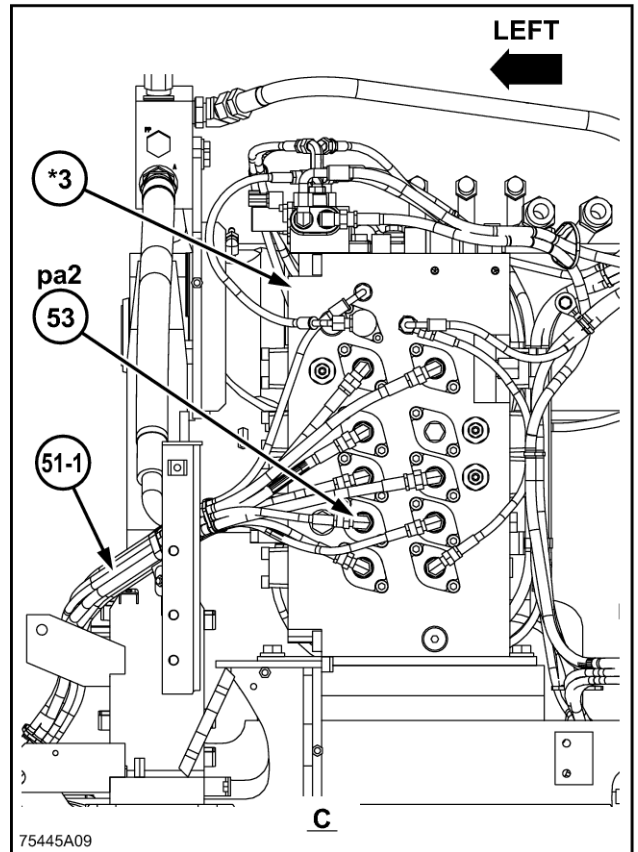


SMIL15CEX2479BB 5

6. Conecte el codo (53) al puerto pa2 de la válvula de control (\*3).

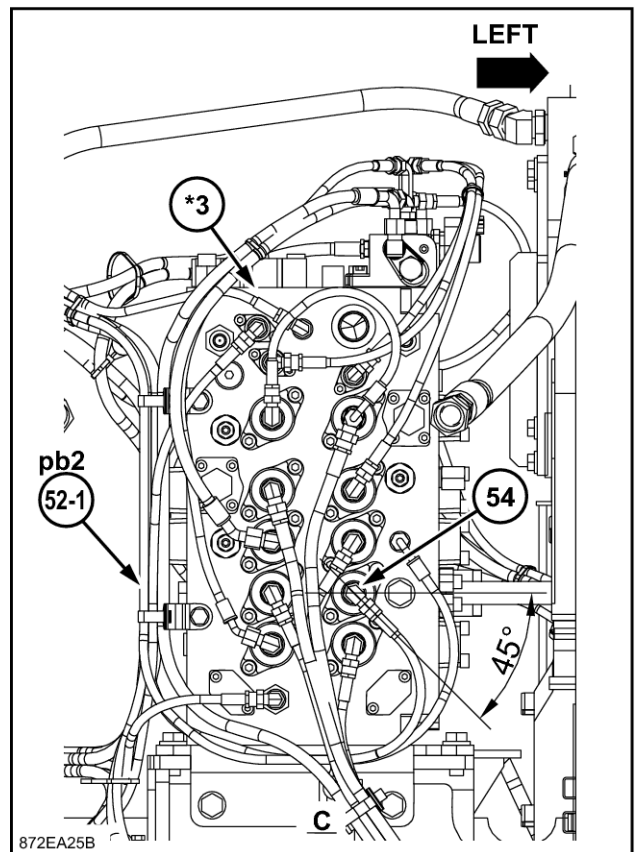
Conecte el puerto B de la válvula de control remoto (\*1) y el puerto pa2 de la válvula de control (\*3) con la manguera de nailon (51-1).

Instale el codo (53) con un ángulo horizontal aproximado de 20° hacia abajo.



75445A09 9

7. Instale el codo (54) en el puerto pb2 de la válvula de control (\*3).



872EA25B 10

CLICK HERE TO **DOWNLOAD** THE COMPLETE MANUAL

- Thank you very much for reading the preview of the manual.
- You can download the complete manual from: [www.heydownloads.com](http://www.heydownloads.com) by clicking the link below



- Please note: If there is no response to CLICKING the link, please download this PDF first and then click on it.

CLICK HERE TO **DOWNLOAD** THE COMPLETE MANUAL