



**BP 249
44158 ANCENIS CEDEX - FRANCE
TEL : 33 (0)2 40 09 10 11**

YOUR DEALER

REF : 47910 EN (30 / 07 / 2007)

**HYDROSTATIC
TRANSMISSIONS**

I.C. ENGINES

**GENERALES
INFORMATIONS**

HAND BOOK

CLICK HERE TO **DOWNLOAD** THE COMPLETE MANUAL

- Thank you very much for reading the preview of the manual.
- You can download the complete manual from: www.heydownloads.com by clicking the link below



- Please note: If there is no response to CLICKING the link, please download this PDF first and then click on it.

CLICK HERE TO **DOWNLOAD** THE COMPLETE MANUAL

CHAPTER 1

" TECHNICAL SPECIFICATIONS
FOR HYDROSTATIC
TRANSMISSION EQUIPMENT "

TECHNICAL SPECIFICATIONS FOR HYDROSTATIC TRANSMISSION EQUIPMENT

TYPE OF LIFT TRUCK : MTI 235 - MTI 240

I.C. ENGINE

- Type : PERKINS 4.236		
• Rated rpm	2300	rpm
• Idle rpm	800	rpm
• Max. rpm (unladen)	2400	rpm
• Power DIN	80	cv
• Starting rpm	1150	rpm
• Engine rpm drop at transmission governing end.....	50	rpm

HYDROSTATIC PUMP reference : 2680781 MI

- Type BPV 100 AU.E.S.		
• Min./max. displacement	0 to 100,3	cm ³ /tr
• Max. outflow at rated rpm	240,7	l./mn
• Governing type	Automotive	

BOOST PUMP

• Displacement	52,2	cm ³ /tr
----------------------	------	---------------------

HYDRAULIC MOTOR

- Type BMF 105		
• Displacement	104,9	cm ³ /tr
• Max. leak flow rate	8	l/mn
• Reducer reduction ratio	17:1	

TRANSMISSION OPERATING PRESSURE

• H.P. relief valve set pressure	420	bar
• Boost pressure at neutral min. speed	16	bar
• Boost pressure forward/reverse at rated rpm	16	bar
• Pilot pressure Governing end rpm	32	bar
• Gouverning end H.P.....	420	bar
• Max pression in housings.....	1,5	bar
• Max. pressure in the oil cooler	16	bar
• By-pass set pressure on oil cooler	32	bar

Transmission system oil max. temperature	60	°C
Recommended oil type in the transmission.....	SHELL TELLUS S46	
Capacity of transmission oil + Equipment	14	l.

TECHNICAL SPECIFICATIONS FOR HYDROSTATIC TRANSMISSION EQUIPMENT

TYPE OF LIFT TRUCK : MT 1645 H SLT MONO ULTRA

I.C. ENGINE

- Type PERKINS 1004.40T AK 80920			
• Rated rpm	2200	rpm	
• Idle rpm	930	rpm	+20 - 0
• Max. rpm (unladen)	2400	rpm	
• Power ISO / TR 14396	76,5	Kw	

HYDROSTATIC PUMP reference :

- 226 165 Type A4VG71 DA1 D7/3.2 RNZF02F041SH			
• Min./max. displacement	0 to 71	cm ³ /tr	
• Max. capacity	170	l./mn	
• Governing start rpm (50 bar).....	1200	rpm	
• Governing end rpm (at 440 bar).....	1800	rpm	

BOOST PUMP

• Displacement	19,6	cm ³
• Max. capacity	47	l./mn

HYDRAULIC MOTOR Reference :

- 230 947 Type A6VM107DA2/63W-VZB 017B			
• Min./max. displacement	32 to 107	cm ³ /tr	
• Commutation (pilot pressure 20 bar)	310 ± 10	bar	
• Pilot ratio	5/100		
• Scavenging	8	L/mn to 25 Bar	
• Temporization	0,55	mm	
• Axle : HURTH			
• Type 212/231 (AV)			
212/232 (AR)			

TRANSMISSION OPERATING PRESSURE

• D.R. valve set pressure	470	bar
• H.P. relief valve set pressure	508	bar
• Boost pressure at neutral min. speed	15 ± 2	bar
max. speed	28 ± 2	bar
• Boost pressure forward/reverse at rated rpm	28 ± 2	bar
• Pilot pressure at beginning of governed speed	7 ± 1	bar
• Governing end pilot pressure	18 ± 2	bar
• Gouverning end H.P. 1800 rpm.....	440	bar
• Max pression in housings.....	3	bar (cold)
• By-pass set pressure on oil cooler	2	bar

Maximum of travel speed	25	Km/h
Drawbar pull in load condition	7400	Kg
Recommended oil type in the transmission.....	MANITOU HYDRAULIQUE ISO 46	
Capacity of transmission oil + Equipment.....	l.	
Reference of transmission filter : 600 675		

TECHNICAL SPECIFICATIONS FOR HYDROSTATIC TRANSMISSION EQUIPMENT

TYPE OF LIFT TRUCK : MVT, AVT, 1135 L / 1230 SL / 1330 SL ATMO

I.C. ENGINE

- Type 1 : PERKINS 1004.4 AA80547		
- Type 2 : PERKINS 1004.42 AR80980		
• Rated rpm	2300	rpm
• Idle rpm	850	rpm
• Max. rpm (unladen).....	2500	rpm
• Power DIN	67	Kw

HYDROSTATIC PUMP

- Type REXROTH A4VG56DA1D7/32R-PZC02F025S-S		
• Min./max. displacement	0 to 56	cm ³ /tr
• Max. capacity	140	l./mn
• Governing start rpm.....	1050	rpm
• Governing end rpm	1800	rpm

BOOST PUMP

• Displacement	11,1	cm ³ /tr
• Max. capacity	25,5	l./mn

HYDRAULIC MOTOR

- Type REXROTH A6VM80DA/60W0370-PZB026B		
• Min/max. displacement	37 to 80	cm ³ /tr
• Max. leak flow rate	260 / 280	l/mn

AXLE : HURTH

- Type : 353/279/467 (AV)
279/145 (AR)

TRANSMISSION OPERATING PRESSURE

• D.R. valve set pressure	440	bar
• H.P. relief valve set pressure.....	460	bar
• Boost pressure at neutral min. speed	30	bar
max. speed	32	bar
• Boost pressure forward/reverse at rated rpm.....	32	bar
• Pilot pressure at beginning of governed speed	6	bar
• Governing end pilot pressure.....	20	bar
• Gouverning end H.P.....	400	bar
• Max pression in housings.....	2	bar
• By-pass set pressure on oil cooler.....	2,5	bar

Maximum of travel speed 25 Km/h

Drawbar pull in load condition..... 9600 kg

Recommended oil type in the transmission..... SHELL TELLUS T46

Capacity of transmission oil + Equipment..... 110 l.

Reference of transmission filter : 485695

TECHNICAL SPECIFICATIONS FOR HYDROSTATIC TRANSMISSION EQUIPMENT

TYPE OF LIFT TRUCK : MANILOADER AL 70 e

I.C. ENGINE

- Type DEUTZ F4L1011F		
• Rated rpm	2450	rpm
• Idle rpm	900	rpm \pm 50
• Max. rpm (unladen)	2475	rpm \pm 25
• Power	36,5	Kw 50 cv

HYDROSTATIC PUMP :

- Type A4VG56DA		
• Min./max. displacement	0 to 56	cm ³ /tr
• Governing start rpm	1100	rpm \pm 50

HYDRAULIC MOTOR :

- Type A6VM80HA		
• Commutation.....	170 \pm 10	bar
• Axle :		
• Type ZF APR 725 (AV)		
ZF APR 725 (AR)		

TRANSMISSION OPERATING PRESSURE

• D.R. valve set pressure	390	bar \pm 10
• H.P. relief valve set pressure	420	bar \pm 10
• Boost pressure	30 \pm 1	bar
• Pilot pressure	20 \pm 1	bar
• Braking pressure at start of inching	11	bar
Maximum of travel speed	20	Km/h
Drawbar pull in load condition	3600	Kg \pm 200
Recommended oil type in the transmission.....	MANITOU HYDRAULIQUE ISO 46	

CHAPTER 2

"IC ENGINES TECHNICAL SPECIFICATIONS"

IC ENGINES TECHNICAL SPECIFICATIONS

ENGINE TYPE : 2714 E

Manufacturer : "FORD"

FITTED ON : MC 80 - MC 80 F - MC 90 F - MC 100 F - MP 800

TECHNICAL SPECIFICATIONS

• Power	115	cv
• Number of cylinders	6	
• Bore - Stroke	107 - 115	mm
• Displacement	6220	cm ³
• Full load engine rpm.....	2500	rpm
• Unladen rating rpm	2750	rpm
• Idle rpm	700	rpm
• Compression ratio	16,0 / 1	
• Injection order	1 - 5 - 3 - 6	
• Injection pump timing (en ligne SIMMS).....	20°	before TDC
• Injection pressure	185	bar
• Engine oil pressure Min.	1,5	bar
Max.....	3,5	bar
• Valve clearance (hot) Inlet.	0,38	mm
Exh.	0,38	mm
• Valve seat angle	30°	
• Thermostat	79 to 85	°C

TIGHTENING TORQUE (m/Kg)

• Cylinder head bolts	14,5 to 15,2
• Rocker arm assy bolts	2,3 to 3,0
• Fitting on nozzle holder.....	8,3 to 10,4
• Nozzle holder.....	2,1
• Flywheel screw.....	11,1 to 12,4
• Crankshaft bearing caps.....	15,9 to 16,6
• Connecting rod caps Nuts.....	7,6 to 8,2
Bolts	11,7 to 12,4
• Crankshaft pulley	32,2

CAPACITY

• Engine.....	14,7	l
• Cooling system	17	l
• Injection pump governor	0,25	l

VALVE CLEARANCE

Turn the engine until the valves of the first column are fully open, then you can then check the valves of the second column.

Opened valves

1 and 4
8 and 10
2 and 6
9 and 12
3 and 5
7 and 11

Valves to be adjusted

9 (Inlet) and 12 (Ech)
3 (Ech) and 5 (Inlet)
7 (Inlet) and 11 (Ech)
1 (Ech) and 4 (Inlet)
8 (Inlet) and 10 (Ech)
2 (Ech) and 6 (Inlet)

IC ENGINES TECHNICAL SPECIFICATIONS

ENGINE TYPE : 4.108

Manufacturer : "PERKINS"

FITTED ON : MC 20 HP - 4 RM 20 HP

TECHNICAL SPECIFICATIONS

• Power	41,5	cv
• Number of cylinders	4	
• Bore - Stroke	79,4 - 88,9	mm
• Displacement	1760	cm ³
• Rated rpm	3000	rpm
• Idle rpm	800	rpm
• Compression ratio	22,1 / 1	
• Firing order	1 - 3 - 4 - 2	
• Nozzle rating	152	bar
• Valve clearance Hot	0,25	Int. and exh.
Cold.....	0,30	Int. and exh.
• Oil pressure (hot).....	2,1 - 4,2	bar
• Thermostat	79,5 - 96	°C
• Max. crankshaft side play.....	0,51	mm
• Injection timing	18°	before TDC
• Liner protusion	0,58 - 0,69	mm

TIGHTENING TORQUE (m/Kg)

• Cylinder head bolts	8,25
• Fuel nozzle nut	1,6
• Bearing caps	11
• Connecting rod caps	5,8
• Crankshaft pulley screw	20,6
• Flywheel screw.....	8,25
• Idler gear hub screw	4,38

CAPACITY

• Engine.....	4,5	l
• Cooling system	12	l

VALVE CLEARANCE ADJUSTMENT ON PERKINS ENGINES

VALVE CLEARANCE ADJUSTMENT

ON PERKINS ENGINES

FOR 4.236

Proceed as follows :

- Place cylinder n°4 valves in rocking position (between opening of intake valve and closing of exhaust valve) to adjust cylinder n°1 valve tappet clearance.
- Cylinder n°2 in rocking position and adjustment on cylinder n° 3.
- Cylinder n°1 in rocking position and adjustment on cylinder n° 4.
- Cylinder n°3 in rocking position and adjustment on cylinder n° 2.

FOR 6354.4 / MI 70

- Place cylinder n°6 valves in rocking position (between opening of intake valve and closing of exhaust valve) to adjust cylinder n°1 valve tappet clearance.
- Cylinder n°2 in rocking position and adjustment on cylinder n° 5.
- Cylinder n°4 in rocking position and adjustment on cylinder n° 3.
- Cylinder n°1 in rocking position and adjustment on cylinder n° 6.
- Cylinder n°5 in rocking position and adjustment on cylinder n° 2.
- Cylinder n°3 in rocking position and adjustment on cylinder n° 4.

FOR 3.152 / MI 205

(3 cylinders)

- Place exhaust valve n°6 of cylinder n°3 in full opening position.
- Adjust exhaust and intake valves (n°1 and n°2) of cylinder n°1.
- Adjust exhaust valve n°3 of cylinder n°2 and exhaust valve n°5 of the third cylinder. Turn crankshaft one full turn (operating direction) and place intake valve n°1 and exhaust valve n°2 of cylinder n°1 in rocking position.
- Adjust intake valve n°4 of cylinder n°2.
- Adjust exhaust valve n°6 of cylinder n°3.

IC ENGINES TECHNICAL SPECIFICATIONS

ENGINE TYPE : 1004.4

Manufacturer : "PERKINS"

FITTED ON : MLT 626/725 Serie 2 et 3 - MLT 630
 MT 830/930/840 CP
 MT 930/1230/1530 SCP
 MLT 523/526 Serie 1 et 2
 ML 630 CP
 MLT 628/632/728

MLT 524/527
 MT 728-2
 MT 728-4
 MT 928-4
 MSI 40/50
 M26-2/4, M30-2/4, M40-4, M50-4, MC30 (Up to 139093)
 MC 40/50/60/70 POWERSHIFT (Up to 139093)

TECHNICAL SPECIFICATIONS

• Power	82	cv
• Injection	Direct	
• Number of cylinders	4	
• Bore - Stroke	100 - 127	mm
• Displacement	3990	cm ³
• Rated rpm	2300	rpm
• Unladen rating rpm	2475*	rpm
• Idle rpm	775**	rpm
• Compression ratio	16,5 / 1	
• Firing order	1 - 3 - 4 - 2	
• Nozzle rating	250	bar
• Valve clearance Int	0,20	
Ech	0,45	
• Valve shrinkage Int	1,27 - 1,60mm	
Ech	1,28 - 1,83mm	
• Oil pressure (hot).....	4,9 to 4,35	bar
• Thermostat	81 - 95	°C
• Lift	9,1	mm

CYLINDER HEAD

• Initial height	102,79 / 103,59	mm
• Minimum height	102,48	mm
• Max. warpage	0,08	mm across
	0,15	mm along

TIGHTENING METHOD

Oil the screws.

Progressive tightening in three stages to 11 mkg torque (4.9.11).

Check tightening.

Index screw position and apply tightening angle according to screw length :

- screw (S) : 150°
- screw (M) : 180°
- screw (L) : 210°

No further tightening of cylinder head on hot engine or after the engine has been put into service is necessary.

* For MSI 40/50 (2500)

* For MC. POWERSHIFT (2480)

** For MSI 40/50 (850)

** For MC. POWERSHIFT (825)

PERKINS SERIE 1000 ENGINE IDENTIFICATION

ENGINE IDENTIFICATION

The 1000 Series consist of a range of both four and six cylinder engines. Each range will have four basic engine types, naturally aspirated, compensated, turbocharged and turbocharged/intercooled.

There are different model variations within each range. Identification of the various models is by a system of numbers and letter, for example :

1006-6TW
1006 6 cylinder engine
-6 6 litre engine
T Turbocharged
TW Turbocharged, but with an air water intercooler to cool the induction air between the turbocharged and the cylinders.

A letter "C" indicates that the engine has a special turbocharger fitter for altitude compensation only. Engine used for generator sets have a similar system of model identification, for example :

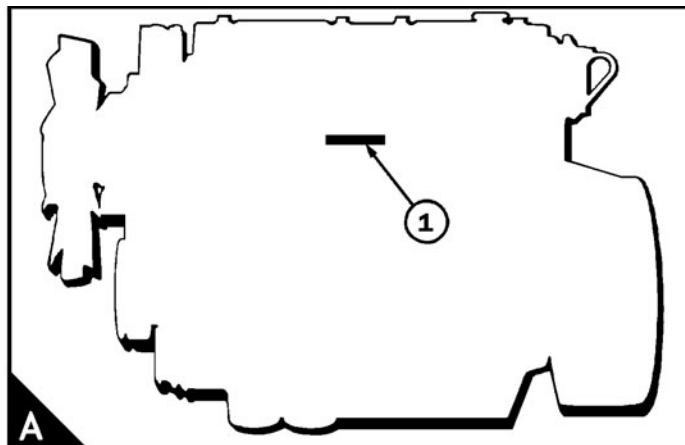
1006TWG1
1006 6 cylinder engine
T Turbocharged
TW Turbocharged, but with an air water intercooler
G Generator set
1 Rating code number

In this handbook, the different engine types are indicated by their code letters, which are the first two letters of the engine number as indicated below :

Code letter	Engine type
AA	four cylinder, naturally aspirated
AB	four cylinder, turbocharged
AC	four cylinder, compensated
AD	four cylinder, turbocharged/intercooled
YA	six cylinder, naturally aspirated
YB	six cylinder, turbocharged
YC	six cylinder, compensated
AD	six cylinder, turbocharged/intercooled

The engine number is stamped on a label which is fastened to the left side of the cylinder block (AI). An example of an engine number is : AB30126U510256N.

If you need parts, service or information for your engine, you must give the complete engine number to your Perkins distributor.



IC ENGINES TECHNICAL SPECIFICATIONS

ENGINE TYPE : GAZ TYPE 4Y

Manufacturer : "TOYOTA"

FITTED ON : MSI 20 - 25 - 30 G

TECHNICAL SPECIFICATIONS

• Power	54	cv
• Combustion system	GPL	
• Number of cylinders	4	
• Bore - Stroke	91 - 86	mm
• Displacement	2237	cm ³
• Rated rpm	2400	rpm
• Unladen rating rpm	2600	rpm
• Idle rpm	900	rpm
• Compression ratio	9,2 / 1	
• Firing order	1 - 3 - 4 - 2	
• Nozzle rating	300	bar
• Valve clearance Int	0,20	mm
Ech	0,45	mm
• Oil pressure (hot engine)	3,6 - 4,4	bar
• Thermostat	75 - 78	°C

RECOMMENDED TIGHTENING TORQUE (unit Mkg)

• On cylinders block			
Cylinder head	M12	9,00
	M8	1,95
Timing gear housing	M10	3,80
	M8	1,85
Damper of timing gear chain			1,85
Tension adjuster of timing gear chain			1,85
Camshaft thrust plate			1,85
Return gear shaft			3,80
Valve bank			1,85
Oil filter			1,85
Oil pump			1,85
Drain plug			4,50
Lower case			1,30
Oil pump strainer			1,20
Oil pump			1,85
Crankshaft bearing cap			8,00
• On cylinder head			
Cylinder head cover			0,50
Rocker arm shaft			2,40
Sparking plug			1,80
Cylinder head pipe			5,00
Water pump			1,85
• On crankshaft			
Crankshaft pulley			11

IC ENGINES TECHNICAL SPECIFICATIONS

ENGINE TYPE : 1004.40 TW

Manufacturer : "PERKINS"

FITTED ON : MLT 633/730 - 120 LS
MLT 633/730 - 120 LS POWERSHIFT
MT 835 - 120 LS Serie 2

SPEC
AK 80922
AK 80922
AK 80922

TECHNICAL SPECIFICATIONS

ENGINE 1004.40 TW	POWER ISO / TR 14396		RATED rpm rpm	IDLE rpm rpm	RATING rpm (Unload)
	hp	Kw			
1004.40 TW AM 80922	123	90,5	2200	930	2380

- Number of cylinders 4
- Cylinder arrangement in line
- Cycle four stroke
- Direction of rotation clockwise
- Inlet system turbocharged, cooled by
heat exchanger
- Combustion system Direct injection
- Bore - Stroke 100 - 127 mm
- Compression ratio 17,25 / 1
- Displacement 4 Litres
- Injection order 1 - 3 - 4 - 2
- Set of press-button (cold or hot) Int 0,20 mm
 Ech 0,45 mm
- Lubrification oil pressure 280 KPa
- Nozzle rating 290 bar
- Thermostat 80 - 96 °C
- Lift 9 mm

CYLINDER HEAD

- Initial height 102,79 - 103,59 mm
- Minimum height 102,48 mm
- Max. warpage 0,15 mm along
0,08 mm across

CLICK HERE TO **DOWNLOAD** THE COMPLETE MANUAL

- Thank you very much for reading the preview of the manual.
- You can download the complete manual from: www.heydownloads.com by clicking the link below



- Please note: If there is no response to CLICKING the link, please download this PDF first and then click on it.

CLICK HERE TO **DOWNLOAD** THE COMPLETE MANUAL

MANITOU

TIGHTENING TORQUE OF THE WHEEL FIXING NUTS

MODELS	REF. NUT	FRONT WHEELS	REF. NUT	REAR WHEELS
MT 422 H/CP/CP TURBO MT 425 H/CP/CP TURBO MT 431 CP - 4 RM 26 NP - 4 RM 30 NP	109480	60 to 63 kg.m	36366	32 to 34 kg.m
MANITOOOL	909	25 to 27 kg.m	909	25 to 27 kg.m
MT 225 FC (Up to machine 62733)	63167	45 to 48 kg.m	909	25 to 27 kg.m
MT 225 FC (From machine 62734)	63167	45 to 48 kg.m	1767	32 to 34 kg.m
MC 60 K - MC 60 K JUBILEE (ALGERIE)	127381	28 to 30 kg.m	36366	32 to 34 kg.m
MB 50 K - MC 50 K	127355	28 to 30 kg.m	1767	32 to 34 kg.m
4 RM 40 K - 4 RM 50 K	127355	28 to 30 kg.m	127381	28 to 30 kg.m
MI 205 - MI 255 - MI 305 - MI 405	2762612 MI	33 kg.m	2762650 MI	33 kg.m
MI 50 C - MI 60 C - MTI 235	2762613 MI	46 kg.m	2762612 MI	33 kg.m
MI 70 C - MI 80 C	3460033 MI	33 kg.m	3460033 MI	33 kg.m
MT 430 CPS/CPLC/CPDS	106055	61 kg.m	106055	61 kg.m
MT 450 CP	448011	50 kg.m	448011	50 kg.m
MT 440 DCP/SCP	448011	50 kg.m	448011	50 kg.m
M 226/30 HE	109480	60 to 63 kg.m	909	25 to 27 kg.m

MANITOU TRUCKS (TELESCOPIC)

2/2

TRANSMISSION TYPE		HYDRODYNAMICS TORQUE CONVERTER			HYDROSTATIC		
DESIGNATION							
ENGINE TYPE MARKER PROPULSION	1004.4 T PERKINS DIESEL	1004.4 T PERKINS DIESEL	1004.4 T PERKINS DIESEL	1004.4 T PERKINS DIESEL	1004.42 PERKINS DIESEL	1004.40 T PERKINS DIESEL	1004.40 TW PERKINS DIESEL
TRANSMISSION	CLARK	Turner (Dana Spicer)	Turner (Dana Spicer)	CLARK	Turner (Dana Spicer)	Turner (Dana Spicer)	Turner (Dana Spicer)
MLA	MLA 627 Turbo			MLA 628			
MLT MIL	MLT 524 MLT 527 MLT 628 MLT 632 MLT 728 MLT 628 M.U. MLT 728 M.U.	MLT 524 Turbo MLT 527 Turbo MLT 524 Turbo M.U. MLT 527 Turbo M.U. MLT 628 Turbo MLT 632 Turbo MLT 728 Turbo MLT 628 Turbo M.U. MLT 728 Turbo M.U.	MLT 524 Turbo MLT 527 Turbo MLT 524 Turbo M.U. MLT 527 Turbo M.U. MLT 628 Turbo MLT 632 Turbo MLT 728 Turbo MLT 628 Turbo M.U. MLT 728 Turbo M.U.	MLT 524 / 527 (à partir 140060*) MLT 526 Serie A MLT 632 / 635 Serie 2 MLT 629 / 730	MLT 524 / 527 (a partir 140060*) MLT 526 Serie A MLT 632 / 635 Serie 2 MLT 629 / 730	MLT 524 / 527 Turbo (a partir 140060*) MLT 629 / 730 Turbo MLT 633 / 730 Turbo LS MLT 633 / 730 Turbo Powershift	MLT 633 / 730 120 LS MLT 633 / 730 MLT 633 / 730 Powershift 120 LS
MT	MT 728-2 MT 728-4 MT 928-4 MT 845 MT 940 L MT 1232 S MT 1240 L MT 1330 SL MT 1337 SL MT 1637 SL MT 845 M.U. MT 940 L M.U. MT 1232 S M.U. MT 1240 L M.U. MT 1337 SL M.U. MT 1637 SL M.U.	MT 728-2 Turbo MT 728-4 Turbo MT 928-4 Turbo MT 835 Turbo M.U. MT 845 Turbo MT 940 L Turbo MT 1232 S Turbo MT 1240 L Turbo MT 1330 SL Turbo MT 1337 SL Turbo MT 1637 SL Turbo MT 845 Turbo M.U. MT 940 L Turbo M.U. MT 1232 S Turbo M.U. MT 1240 L Turbo M.U. MT 1337 SL Turbo M.U. MT 1637 SL Turbo M.U.	MT 728-2 Turbo MT 728-4 Turbo MT 928-4 Turbo MT 835 Turbo M.U. MT 845 Turbo MT 940 L Turbo MT 1232 S Turbo MT 1240 L Turbo MT 1330 SL Turbo MT 1337 SL Turbo MT 1637 SL Turbo MT 845 Turbo M.U. MT 940 L Turbo M.U. MT 1232 S Turbo M.U. MT 1240 L Turbo M.U. MT 1337 SL Turbo M.U. MT 1637 SL Turbo M.U.	MT 732 / 932 MT 845 / 940 L / 1233 S / 1240 L / 1330 SL / 1337 SL / 1637 SL Serie 2	MT 732 / 932 MT 845 / 940 L / 1233 S / 1240 L Turbo + Turbo MONO-ULTRA Serie 2 MT 1337 SL / 1637 SL Turbo + Turbo MONO-ULTRA Serie 2	MT 732 / 932 Turbo MT 845 / 940 L / 1233 S / 1240 L Turbo + Turbo MONO-ULTRA Serie 2 MT 1337 SL / 1637 SL Turbo + Turbo MONO-ULTRA Serie 2	MT 835 - 120 LS Serie 2

* Except for 140089 - 140090 - 140202 to 140204 - 140216 to 140218 - 140300 - 140301 - 140310 - 140311 - 140364 - 140374 to 140376 - 140405 - 140409

TYRES

MT 4			
	MT 425 CP Turbo Serie 2	88	
MT 5			
	MT 523 Serie A	89	
MT 7			
	MT 727 Serie C	90	
	MT 728-2 Serie 1	91	
	MT 728-2 Turbo Serie 1	91	
	MT 728-4 Serie 1	92	
	MT 728-4 Turbo Serie 1	92	
	MT 732 Serie 1	93	
	MT 732 Serie A	94	
	MT 732 Turbo Serie 1	93	
	MT 732 Turbo Serie A	94	
MT 8			
	MT 830 CP	95	
	MT 830 CP Turbo	95	
	MT 830 CP Turbo ULTRA	95	
	MT 830 CP ULTRA	95	
	MT 835 MONO-ULTRA Serie 1	96	
	MT 835 Turbo MONO-ULTRA Serie 1	96	
	MT 835-120 LS Serie 2	97	
	MT 840 CP	98	
	MT 840 CP Turbo	98	
	MT 840 CP Turbo ULTRA	98	
	MT 840 CP ULTRA	98	
	MT 845 H Turbo Serie 1	99	
	MT 845 Serie 1	100	
	MT 845 Serie 2	101	
	MT 845 Turbo MONO-ULTRA Serie 1	100	
	MT 845 Turbo MONO-ULTRA Serie 2	101	
	MT 845 Turbo Serie 1	100	
	MT 845 Turbo Serie 2	101	
MT 9			
	MT 927 Serie C		102
	MT 928-4 Serie 1		103
	MT 928-4 Turbo Serie 1		103
	MT 930 CP		104
	MT 930 CP Turbo		104
	MT 930 CP Turbo ULTRA		104
	MT 930 CP ULTRA		104
	MT 930 SCP		105
	MT 930 SCP Turbo		105
	MT 930 SCP Turbo ULTRA		105
	MT 930 SCP ULTRA		105
	MT 932 Serie 1		106
	MT 932 Serie A		107
	MT 932 Turbo Serie 1		106
	MT 933 CP		108
	MT 933 CP Turbo		108
	MT 940 H L Turbo Serie 1		109
	MT 940 L Serie 1		110
	MT 940 L Serie 2		111
	MT 940 L Turbo MONO-ULTRA Serie 1		110
	MT 940 L Turbo MONO-ULTRA Serie 2		111
	MT 940 L Turbo Serie 1		110
	MT 940 L Turbo Serie 2		111

TYRES

M2 26 CP

FRONT TYRES

	DIMENSIONS	PRESSURE	TYRE LOAD		PRESSURE ON THE CONTACT SURFACE		AREA OF THE CONTACT	
					HARD GROUND	LIGHT GROUND	HARD GROUND	LIGHT GROUND
STANDARD	16,5/85-24 SGI TL 8PR GOODYEAR	2,5 Bar	Unladen	1300 kg	5,2 kg/cm ²	1,2 kg/cm ²	250 cm ²	1069 cm ²
			Laden	3500 kg	8,5 kg/cm ²	2 kg/cm ²	410 cm ²	1755 cm ²
OPTION	13,00R24 Tubeless XGLA *TG MICHELIN	3,5 Bar	Unladen	1300 kg	2,7 kg/cm ²	1,26 kg/cm ²	480 cm ²	1035 cm ²
			Laden	3500 kg	3,1 kg/cm ²	1,45 kg/cm ²	1120 cm ²	2416 cm ²

REAR TYRES

	DIMENSIONS	PRESSURE	TYRE LOAD		PRESSURE ON THE CONTACT SURFACE		AREA OF THE CONTACT	
					HARD GROUND	LIGHT GROUND	HARD GROUND	LIGHT GROUND
STANDARD	9,00-16 EM5 10PR DUNLOP	3 Bar	Unladen	1400 kg	6,5 kg/cm ²	3 kg/cm ²	215 cm ²	460 cm ²
			Laden	500 kg	4,8 kg/cm ²	2,8 kg/cm ²	105 cm ²	175 cm ²
OPTION	13,0/65-18 IMP E7 GRIP Tubeless 12PR CONTINENTAL	2 Bar	Unladen	1400 kg	2,5 kg/cm ²	kg/cm ²	560 cm ²	cm ²
			Laden	500 kg	2,5 kg/cm ²	kg/cm ²	200 cm ²	cm ²
OPTION	10,5-18 MPT TITAN Tube Type 10PR 126G CONTINENTAL	2,3 Bar	Unladen	1400 kg	kg/cm ²	kg/cm ²	cm ²	cm ²
			Laden	500 kg	kg/cm ²	kg/cm ²	cm ²	cm ²

TYRES

MC 30 CP

FRONT TYRES

	DIMENSIONS	PRESSURE	TYRE LOAD		PRESSURE ON THE CONTACT SURFACE		AREA OF THE CONTACT	
					HARD GROUND	LIGHT GROUND	HARD GROUND	LIGHT GROUND
STANDARD	14,5R20 MPT80 Tubeless 18PR 143G/J CONTINENTAL	3,5 Bar	Unladen Laden	1350 kg 3800 kg	2 kg/cm ² 3,5 kg/cm ²	kg/cm ² kg/cm ²	660 cm ² 1100 cm ²	cm ² cm ²

REAR TYRES

	DIMENSIONS	PRESSURE	TYRE LOAD		PRESSURE ON THE CONTACT SURFACE		AREA OF THE CONTACT	
					HARD GROUND	LIGHT GROUND	HARD GROUND	LIGHT GROUND
STANDARD	10R17,5 RS415 Tubeless 134/132L CONTINENTAL	4 Bar	Unladen Laden	1450 kg 500 kg	kg/cm ² kg/cm ²	kg/cm ² kg/cm ²	cm ² cm ²	cm ² cm ²

TYRES

MCE 30 HZ

FRONT TYRES

	DIMENSIONS	PRESSURE	TYRE LOAD		PRESSURE ON THE CONTACT SURFACE		AREA OF THE CONTACT	
					HARD GROUND	LIGHT GROUND	HARD GROUND	LIGHT GROUND
STANDARD	10 R22,5 14PR T70 MONOPLY UNIROYAL	6 Bar	Unladen Laden	970 kg 3450 kg	4 kg/cm ² 5,5 kg/cm ²	kg/cm ² kg/cm ²	240 cm ² 625 cm ²	cm ² cm ²

REAR TYRES

	DIMENSIONS	PRESSURE	TYRE LOAD		PRESSURE ON THE CONTACT SURFACE		AREA OF THE CONTACT	
					HARD GROUND	LIGHT GROUND	HARD GROUND	LIGHT GROUND
STANDARD	700x12 14PR IC40 CONTINENTAL	6 Bar	Unladen Laden	1440 kg 460 kg	kg/cm ² kg/cm ²	kg/cm ² kg/cm ²	cm ² cm ²	cm ² cm ²

TYRES

MSI 30 D
MSI 30 D BUGGIE
FRONT TYRES

212196 h

	DIMENSIONS	PRESSURE	TYRE LOAD		PRESSURE ON THE CONTACT SURFACE		AREA OF THE CONTACT	
					HARD GROUND	LIGHT GROUND	HARD GROUND	LIGHT GROUND
STANDARD	275/70 R22,5 G391 GOODYEAR	9 Bar	Unladen Laden	900 kg 3400 kg	6,4 kg/cm ² 9,3 kg/cm ²	4,9 kg/cm ² 7,4 kg/cm ²	140 cm ² 365 cm ²	185 cm ² 460 cm ²
OPTION	10,5R20 MPT80 14PR 134G CONTINENTAL	5,6 Bar	Unladen Laden	900 kg 3400 kg	kg/cm ² 5,4 kg/cm ²	kg/cm ² kg/cm ²	cm ² 630 cm ²	cm ² cm ²
OPTION	8,25-20 CSE SC15 CONTINENTAL	Solid	Unladen Laden	900 kg 3400 kg	3,4 kg/cm ² 8,2 kg/cm ²	kg/cm ² kg/cm ²	265 cm ² 415 cm ²	cm ² cm ²
OPTION	15,5/55R18 SPPG7 14PR DUNLOP	4,5 Bar	Unladen Laden	900 kg 3400 kg	3,3 kg/cm ² 4 kg/cm ²	1,8 kg/cm ² 2,2 kg/cm ²	280 cm ² 860 cm ²	504 cm ² 1548 cm ²
OPTION	12,0-18 12PR T86 DUNLOP	4,2 Bar	Unladen Laden	900 kg 3400 kg	7,4 kg/cm ² 11,1 kg/cm ²	2,4 kg/cm ² 3,8 kg/cm ²	121 cm ² 306 cm ²	368 cm ² 895 cm ²
OPTION	285/70 R19,5 XZY 140/137L MICHELIN	8 Bar	Unladen Laden	900 kg 3400 kg	6,9 kg/cm ² 6,8 kg/cm ²	kg/cm ² kg/cm ²	130 cm ² 501 cm ²	cm ² cm ²

REAR TYRES

	DIMENSIONS	PRESSURE	TYRE LOAD		PRESSURE ON THE CONTACT SURFACE		AREA OF THE CONTACT	
					HARD GROUND	LIGHT GROUND	HARD GROUND	LIGHT GROUND
STANDARD	700x12 14PR IC40 CONTINENTAL	6,7 Bar	Unladen Laden	1400 kg 450 kg	kg/cm ² kg/cm ²	kg/cm ² kg/cm ²	cm ² cm ²	cm ² cm ²
OPTION	27.10.12 14PR IC12 CONTINENTAL	4,5 Bar	Unladen Laden	1400 kg 450 kg	kg/cm ² kg/cm ²	kg/cm ² kg/cm ²	cm ² cm ²	cm ² cm ²
OPTION	7,00-12 CSE SC10 CONTINENTAL	Solid	Unladen Laden	1400 kg 450 kg	6,9 kg/cm ² 3,8 kg/cm ²	kg/cm ² kg/cm ²	204 cm ² 119 cm ²	cm ² cm ²
OPTION	700R12 136 A5 XZM MICHELIN	4,75 Bar	Unladen Laden	1400 kg 450 kg	4,7 kg/cm ² 3,5 kg/cm ²	kg/cm ² kg/cm ²	296 cm ² 129 cm ²	cm ² cm ²

TYRES

ML 632 Serie 2
ML 632 Turbo Serie 2

226687 g

	DIMENSIONS	PRESSURE	TYRE LOAD		PRESSURE ON THE CONTACT SURFACE		AREA OF THE CONTACT	
					HARD GROUND	LIGHT GROUND	HARD GROUND	LIGHT GROUND
STANDARD	445/70R24 IT510 151G GOODYEAR	4,1 Bar	Front unladen	kg	kg/cm ²	kg/cm ²	cm ²	cm ²
			Front laden	kg	kg/cm ²	kg/cm ²	cm ²	cm ²
			Rear unladen	kg	kg/cm ²	kg/cm ²	cm ²	cm ²
			Rear laden	kg	kg/cm ²	kg/cm ²	cm ²	cm ²
OPTION	440/80-24 T37 158B DUNLOP	4,1 Bar	Front unladen	kg	kg/cm ²	kg/cm ²	cm ²	cm ²
			Front laden	kg	kg/cm ²	kg/cm ²	cm ²	cm ²
			Rear unladen	kg	kg/cm ²	kg/cm ²	cm ²	cm ²
			Rear laden	kg	kg/cm ²	kg/cm ²	cm ²	cm ²
OPTION	18x19,5 16PR T35 STAB. TL DUNLOP	4,5 Bar	Front unladen	kg	kg/cm ²	kg/cm ²	cm ²	cm ²
			Front laden	kg	kg/cm ²	kg/cm ²	cm ²	cm ²
			Rear unladen	kg	kg/cm ²	kg/cm ²	cm ²	cm ²
			Rear laden	kg	kg/cm ²	kg/cm ²	cm ²	cm ²
OPTION	15,5x25 12PR SGL DL 2A GOODYEAR	4,5 Bar	Front unladen	kg	kg/cm ²	kg/cm ²	cm ²	cm ²
			Front laden	kg	kg/cm ²	kg/cm ²	cm ²	cm ²
			Rear unladen	kg	kg/cm ²	kg/cm ²	cm ²	cm ²
			Rear laden	kg	kg/cm ²	kg/cm ²	cm ²	cm ²
OPTION	15,5/80-24 SGI TL 16PR GOODYEAR	4,5 Bar	Front unladen	kg	kg/cm ²	kg/cm ²	cm ²	cm ²
			Front laden	kg	kg/cm ²	kg/cm ²	cm ²	cm ²
			Rear unladen	kg	kg/cm ²	kg/cm ²	cm ²	cm ²
			Rear laden	kg	kg/cm ²	kg/cm ²	cm ²	cm ²
OPTION	445/70R24 XM47 TL 151G MICHELIN	4,1 Bar	Front unladen	kg	kg/cm ²	kg/cm ²	cm ²	cm ²
			Front laden	kg	kg/cm ²	kg/cm ²	cm ²	cm ²
			Rear unladen	kg	kg/cm ²	kg/cm ²	cm ²	cm ²
			Rear laden	kg	kg/cm ²	kg/cm ²	cm ²	cm ²
OPTION	1200R24 X MINE D2 MICHELIN	6 Bar	Front unladen	kg	kg/cm ²	kg/cm ²	cm ²	cm ²
			Front laden	kg	kg/cm ²	kg/cm ²	cm ²	cm ²
			Rear unladen	kg	kg/cm ²	kg/cm ²	cm ²	cm ²
			Rear laden	kg	kg/cm ²	kg/cm ²	cm ²	cm ²
OPTION	15,5R25 XHA MICHELIN	4 Bar	Front unladen	kg	kg/cm ²	kg/cm ²	cm ²	cm ²
			Front laden	kg	kg/cm ²	kg/cm ²	cm ²	cm ²
			Rear unladen	kg	kg/cm ²	kg/cm ²	cm ²	cm ²
			Rear laden	kg	kg/cm ²	kg/cm ²	cm ²	cm ²
OPTION	445/65R22,5 XZY TL 168K MICHELIN	4,5 Bar	Front unladen	kg	kg/cm ²	kg/cm ²	cm ²	cm ²
			Front laden	kg	kg/cm ²	kg/cm ²	cm ²	cm ²
			Rear unladen	kg	kg/cm ²	kg/cm ²	cm ²	cm ²
			Rear laden	kg	kg/cm ²	kg/cm ²	cm ²	cm ²

TYRES

MLT 526 Turbo Serie A (24")

237001

	DIMENSIONS	PRESSURE	TYRE LOAD		PRESSURE ON THE CONTACT SURFACE		AREA OF THE CONTACT	
					HARD GROUND	LIGHT GROUND	HARD GROUND	LIGHT GROUND
STANDARD	17,5LR24 XM27 TL 145A8 MICHELIN	2,9 Bar	Front unladen	1350 kg	1,3 kg/cm ²	1,23 kg/cm ²	1030 cm ²	1100 cm ²
			Front laden	3600 kg	2,7 kg/cm ²	1,78 kg/cm ²	1330 cm ²	2020 cm ²
			Rear unladen	1550 kg	1,4 kg/cm ²	1,36 kg/cm ²	1090 cm ²	1142 cm ²
			Rear laden	650 kg	0,7 kg/cm ²	0,68 kg/cm ²	900 cm ²	950 cm ²
OPTION	400/80-24 T37 153B TL DUNLOP	2,5 Bar	Front unladen	1350 kg	6,2 kg/cm ²	1,7 kg/cm ²	219 cm ²	795 cm ²
			Front laden	3600 kg	8,4 kg/cm ²	2,4 kg/cm ²	428 cm ²	1507 cm ²
			Rear unladen	1550 kg	6,4 kg/cm ²	1,8 kg/cm ²	242 cm ²	877 cm ²
			Rear laden	650 kg	5 kg/cm ²	1,4 kg/cm ²	129 cm ²	468 cm ²
	14,9x24 T35 Stabilarge 14PR DUNLOP	2,75 Bar	Front unladen	1350 kg	5,6 kg/cm ²	1,7 kg/cm ²	243 cm ²	800 cm ²
			Front laden	3600 kg	7,6 kg/cm ²	2,4 kg/cm ²	472 cm ²	1485 cm ²
			Rear unladen	1550 kg	5,8 kg/cm ²	1,8 kg/cm ²	266 cm ²	874 cm ²
			Rear laden	650 kg	4,5 kg/cm ²	1,4 kg/cm ²	144 cm ²	473 cm ²
	405/70R24 EM SPT9 TL 158A2 DUNLOP	3,3 Bar	Front unladen	1350 kg	5,8 kg/cm ²	2,2 kg/cm ²	234 cm ²	606 cm ²
			Front laden	3600 kg	6,3 kg/cm ²	2,4 kg/cm ²	572 cm ²	1496 cm ²
			Rear unladen	1550 kg	6,1 kg/cm ²	2,3 kg/cm ²	254 cm ²	663 cm ²
			Rear laden	650 kg	6,1 kg/cm ²	2,2 kg/cm ²	107 cm ²	293 cm ²
440/70-24 T37 147B TL DUNLOP	1,9 Bar	Front unladen	1350 kg	5,2 kg/cm ²	1,5 kg/cm ²	257 cm ²	899 cm ²	
		Front laden	3600 kg	7,8 kg/cm ²	2,1 kg/cm ²	486 cm ²	1680 cm ²	
		Rear unladen	1550 kg	5,4 kg/cm ²	1,6 kg/cm ²	286 cm ²	1000 cm ²	
		Rear laden	650 kg	4,2 kg/cm ²	1,8 kg/cm ²	154 cm ²	359 cm ²	
OPTION	460/70 R24 IT520 TL 150A8 GOODYEAR	2,75 Bar	Front unladen	1350 kg	5,9 kg/cm ²	1,6 kg/cm ²	228 cm ²	867 cm ²
			Front laden	3600 kg	9,4 kg/cm ²	2,4 kg/cm ²	381 cm ²	1493 cm ²
			Rear unladen	1550 kg	6,3 kg/cm ²	1,7 kg/cm ²	245 cm ²	930 cm ²
			Rear laden	650 kg	3,9 kg/cm ²	1,1 kg/cm ²	167 cm ²	589 cm ²
	15,5/80-24 SGI TL 12PR GOODYEAR	2,4 Bar	Front unladen	1350 kg	4,6 kg/cm ²	1,1 kg/cm ²	293 cm ²	1256 cm ²
			Front laden	3600 kg	8,4 kg/cm ²	2 kg/cm ²	427 cm ²	1829 cm ²
			Rear unladen	1550 kg	5,1 kg/cm ²	1,2 kg/cm ²	305 cm ²	1307 cm ²
			Rear laden	650 kg	2,6 kg/cm ²	0,6 kg/cm ²	252 cm ²	1077 cm ²
	445/70R24 IT510 151G GOODYEAR	2,5 Bar	Front unladen	1350 kg	8,2 kg/cm ²	2,5 kg/cm ²	165 cm ²	544 cm ²
			Front laden	3600 kg	8,2 kg/cm ²	2,5 kg/cm ²	440 cm ²	1450 cm ²
			Rear unladen	1550 kg	8,2 kg/cm ²	2,5 kg/cm ²	189 cm ²	624 cm ²
			Rear laden	650 kg	8,2 kg/cm ²	2,5 kg/cm ²	79 cm ²	262 cm ²

TYRES

MLT 632 Serie 1
MLT 632 MONO-ULTRA Serie 1

208480 j

	DIMENSIONS	PRESSURE	TYRE LOAD		PRESSURE ON THE CONTACT SURFACE		AREA OF THE CONTACT	
					HARD GROUND	LIGHT GROUND	HARD GROUND	LIGHT GROUND
STANDARD	400/70-20 T37 140B TL 10PR DUNLOP	3 Bar	Front unladen	1400 kg	6,8 kg/cm ²	2,3 kg/cm ²	205 cm ²	602 cm ²
			Front laden	4200 kg	9,5 kg/cm ²	3,2 kg/cm ²	440 cm ²	1323 cm ²
			Rear unladen	2000 kg	7,5 kg/cm ²	2,5 kg/cm ²	268 cm ²	787 cm ²
			Rear laden	800 kg	5,8 kg/cm ²	2 kg/cm ²	137 cm ²	402 cm ²
OPTION	16/70x20 EM E58 10PR CONTINENTAL	3,25 Bar	Front unladen	1400 kg	2,4 kg/cm ²	kg/cm ²	595 cm ²	cm ²
			Front laden	4200 kg	3,5 kg/cm ²	kg/cm ²	1210 cm ²	cm ²
			Rear unladen	2000 kg	2,6 kg/cm ²	kg/cm ²	780 cm ²	cm ²
			Rear laden	800 kg	2,1 kg/cm ²	kg/cm ²	385 cm ²	cm ²
OPTION	14,9x24 T35 Stabilarge 14PR DUNLOP	2,75 Bar	Front unladen	1400 kg	5,6 kg/cm ²	1,7 kg/cm ²	250 cm ²	823 cm ²
			Front laden	4200 kg	8 kg/cm ²	2,6 kg/cm ²	528 cm ²	1640 cm ²
			Rear unladen	2000 kg	6,1 kg/cm ²	1,9 kg/cm ²	326 cm ²	1069 cm ²
			Rear laden	800 kg	4,8 kg/cm ²	1,5 kg/cm ²	167 cm ²	548 cm ²
	405/70R24 EM SPT9 TL 158A2 DUNLOP (Industrial)	3,3 Bar	Front unladen	1400 kg	5,8 kg/cm ²	2,2 kg/cm ²	242 cm ²	632 cm ²
			Front laden	4200 kg	6,8 kg/cm ²	2,6 kg/cm ²	617 cm ²	1610 cm ²
			Rear unladen	2000 kg	6,3 kg/cm ²	2,4 kg/cm ²	318 cm ²	830 cm ²
			Rear laden	800 kg	6,2 kg/cm ²	2,3 kg/cm ²	128 cm ²	350 cm ²
	440/70-24 T37 147B TL DUNLOP	2,75 Bar	Front unladen	1400 kg	6 kg/cm ²	1,7 kg/cm ²	232 cm ²	808 cm ²
			Front laden	4200 kg	9,1 kg/cm ²	2,6 kg/cm ²	460 cm ²	1585 cm ²
			Rear unladen	2000 kg	6,7 kg/cm ²	1,9 kg/cm ²	300 cm ²	1040 cm ²
			Rear laden	800 kg	5,1 kg/cm ²	1,4 kg/cm ²	158 cm ²	555 cm ²
OPTION	15,5/80-24 SGI TL 12PR GOODYEAR (Agrarian)	2,7 Bar	Front unladen	1400 kg	5,1 kg/cm ²	1,2 kg/cm ²	274 cm ²	1174 cm ²
			Front laden	4200 kg	9,6 kg/cm ²	2,2 kg/cm ²	437 cm ²	1873 cm ²
			Rear unladen	2000 kg	6,5 kg/cm ²	1,5 kg/cm ²	310 cm ²	1327 cm ²
			Rear laden	800 kg	3,4 kg/cm ²	0,8 kg/cm ²	238 cm ²	1021 cm ²
	460/70 R24 IT520 TL 150A8 GOODYEAR	2,75 Bar	Front unladen	1400 kg	6 kg/cm ²	1,6 kg/cm ²	232 cm ²	883 cm ²
			Front laden	4200 kg	10 kg/cm ²	2,6 kg/cm ²	421 cm ²	1625 cm ²
			Rear unladen	2000 kg	7,3 kg/cm ²	1,9 kg/cm ²	273 cm ²	1040 cm ²
			Rear laden	800 kg	4,4 kg/cm ²	1,2 kg/cm ²	180 cm ²	691 cm ²
OPTION	17,5LR24 XM27 TL 145A8 MICHELIN	3,2 Bar	Front unladen	1400 kg	1,3 kg/cm ²	1,25 kg/cm ²	1065 cm ²	1118 cm ²
			Front laden	4200 kg	3 kg/cm ²	2,73 kg/cm ²	1400 cm ²	1540 cm ²
			Rear unladen	2000 kg	1,7 kg/cm ²	1,58 kg/cm ²	1150 cm ²	1265 cm ²
			Rear laden	800 kg	0,8 kg/cm ²	0,78 kg/cm ²	977 cm ²	1026 cm ²
	425/75R20 XM47 TL 148G MICHELIN	3,5 Bar	Front unladen	1400 kg	2,6 kg/cm ²	kg/cm ²	536 cm ²	cm ²
			Front laden	4200 kg	3 kg/cm ²	kg/cm ²	1396 cm ²	cm ²
			Rear unladen	2000 kg	2,7 kg/cm ²	kg/cm ²	740 cm ²	cm ²
			Rear laden	800 kg	2,5 kg/cm ²	kg/cm ²	321 cm ²	cm ²
OPTION	500-60/22,5 TWIN 404 12PR TRELLEBORG (Sand)	2,75 Bar	Front unladen	1400 kg	3 kg/cm ²	1,5 kg/cm ²	467 cm ²	933 cm ²
			Front laden	4200 kg	3 kg/cm ²	1,5 kg/cm ²	1400 cm ²	2800 cm ²
			Rear unladen	2000 kg	3 kg/cm ²	1,5 kg/cm ²	667 cm ²	1333 cm ²
			Rear laden	800 kg	3 kg/cm ²	1,5 kg/cm ²	267 cm ²	533 cm ²

TYRES

MLT 733 H LSU Turbo Serie 1

235762 c

	DIMENSIONS	PRESSURE	TYRE LOAD		PRESSURE ON THE CONTACT SURFACE		AREA OF THE CONTACT	
					HARD GROUND	LIGHT GROUND	HARD GROUND	LIGHT GROUND
STANDARD	17,5LR24 XM27 TL 145A8 MICHELIN	3,5 Bar	Front unladen Front laden Rear unladen Rear laden	kg kg kg kg	kg/cm2 kg/cm2 kg/cm2 kg/cm2	kg/cm2 kg/cm2 kg/cm2 kg/cm2	cm2 cm2 cm2 cm2	cm2 cm2 cm2 cm2
OPTION	14,9x24 T35 Stabilarge 18PR DUNLOP	3,4 Bar	Front unladen Front laden Rear unladen Rear laden	kg kg kg kg	kg/cm2 kg/cm2 kg/cm2 kg/cm2	kg/cm2 kg/cm2 kg/cm2 kg/cm2	cm2 cm2 cm2 cm2	cm2 cm2 cm2 cm2
	400/70-20 T37 150B TL 14PR DUNLOP	3,8 Bar	Front unladen Front laden Rear unladen Rear laden	kg kg kg kg	kg/cm2 kg/cm2 kg/cm2 kg/cm2	kg/cm2 kg/cm2 kg/cm2 kg/cm2	cm2 cm2 cm2 cm2	cm2 cm2 cm2 cm2
	440/70-24 T37 147B TL DUNLOP	2,8 Bar	Front unladen Front laden Rear unladen Rear laden	kg kg kg kg	kg/cm2 kg/cm2 kg/cm2 kg/cm2	kg/cm2 kg/cm2 kg/cm2 kg/cm2	cm2 cm2 cm2 cm2	cm2 cm2 cm2 cm2
OPTION	15,5/80-24 SGI TL 12PR GOODYEAR (Agrarian)	4 Bar	Front unladen Front laden Rear unladen Rear laden	kg kg kg kg	kg/cm2 kg/cm2 kg/cm2 kg/cm2	kg/cm2 kg/cm2 kg/cm2 kg/cm2	cm2 cm2 cm2 cm2	cm2 cm2 cm2 cm2
	460/70 R24 IT520 TL 150A8 GOODYEAR (Agrarian)	3,3 Bar	Front unladen Front laden Rear unladen Rear laden	kg kg kg kg	kg/cm2 kg/cm2 kg/cm2 kg/cm2	kg/cm2 kg/cm2 kg/cm2 kg/cm2	cm2 cm2 cm2 cm2	cm2 cm2 cm2 cm2
	445/70R24 IT510 151G GOODYEAR	4,1 Bar	Front unladen Front laden Rear unladen Rear laden	kg kg kg kg	kg/cm2 kg/cm2 kg/cm2 kg/cm2	kg/cm2 kg/cm2 kg/cm2 kg/cm2	cm2 cm2 cm2 cm2	cm2 cm2 cm2 cm2
OPTION	445/70R24 XM47 TL 151G MICHELIN	3,2 Bar	Front unladen Front laden Rear unladen Rear laden	kg kg kg kg	kg/cm2 kg/cm2 kg/cm2 kg/cm2	kg/cm2 kg/cm2 kg/cm2 kg/cm2	cm2 cm2 cm2 cm2	cm2 cm2 cm2 cm2

TYRES

MT 830 CP
 MT 830 CP Turbo
 MT 830 CP ULTRA
 MT 830 CP Turbo ULTRA

188780 I

	DIMENSIONS	PRESSURE	TYRE LOAD		PRESSURE ON THE CONTACT SURFACE		AREA OF THE CONTACT	
					HARD GROUND	LIGHT GROUND	HARD GROUND	LIGHT GROUND
STANDARD	400/70-20 T37 150B TL 14PR DUNLOP	3,5 Bar	Front unladen	1850 kg	7,8 kg/cm ²	2,5 kg/cm ²	237 cm ²	740 cm ²
			Front laden	4600 kg	11 kg/cm ²	3,4 kg/cm ²	419 cm ²	1339 cm ²
			Rear unladen	2000 kg	8 kg/cm ²	2,6 kg/cm ²	251 cm ²	783 cm ²
			Rear laden	750 kg	6 kg/cm ²	1,9 kg/cm ²	124 cm ²	387 cm ²
OPTION	16,0/70-20 SGI TL 14PR GOODYEAR	4,8 Bar	Front unladen	1850 kg	kg/cm ²	kg/cm ²	cm ²	cm ²
			Front laden	4600 kg	kg/cm ²	kg/cm ²	cm ²	cm ²
			Rear unladen	2000 kg	kg/cm ²	kg/cm ²	cm ²	cm ²
			Rear laden	750 kg	kg/cm ²	kg/cm ²	cm ²	cm ²

TYRES

MT 930 SCP
MT 930 SCP Turbo
MT 930 SCP ULTRA
MT 930 SCP Turbo ULTRA

188780 I

	DIMENSIONS	PRESSURE	TYRE LOAD		PRESSURE ON THE CONTACT SURFACE		AREA OF THE CONTACT	
					HARD GROUND	LIGHT GROUND	HARD GROUND	LIGHT GROUND
STANDARD	400/70-20 T37 150B TL 14PR DUNLOP	4 Bar	Front unladen	2200 kg	8,5 kg/cm ²	2,7 kg/cm ²	257 cm ²	801 cm ²
			Front laden	5050 kg	11,9 kg/cm ²	3,7 kg/cm ²	422 cm ²	1351 cm ²
			Rear unladen	2300 kg	8,6 kg/cm ²	2,8 kg/cm ²	266 cm ²	832 cm ²
			Rear laden	900 kg	6,7 kg/cm ²	2,1 kg/cm ²	135 cm ²	422 cm ²
OPTION	18x19,5 16PR T35 STAB. TL DUNLOP	5,5 Bar	Front unladen	2200 kg	7,3 kg/cm ²	2,5 kg/cm ²	300 cm ²	875 cm ²
			Front laden	5050 kg	9,4 kg/cm ²	3,2 kg/cm ²	540 cm ²	1600 cm ²
			Rear unladen	2300 kg	7,4 kg/cm ²	2,5 kg/cm ²	310 cm ²	920 cm ²
			Rear laden	900 kg	5,1 kg/cm ²	1,8 kg/cm ²	175 cm ²	500 cm ²

TYRES

MT 1230 SCP Serie C

188780 I

	DIMENSIONS	PRESSURE	TYRE LOAD	PRESSURE ON THE CONTACT SURFACE		AREA OF THE CONTACT		
				HARD GROUND	LIGHT GROUND	HARD GROUND	LIGHT GROUND	
STANDARD	400/70-20 T37 150B TL 14PR DUNLOP	4,5 Bar	Front unladen	2350 kg	9,1 kg/cm ²	2,9 kg/cm ²	258 cm ²	806 cm ²
			Front laden	5400 kg	12,8 kg/cm ²	4 kg/cm ²	420 cm ²	1343 cm ²
			Rear unladen	2500 kg	9,2 kg/cm ²	3 kg/cm ²	270 cm ²	842 cm ²
			Rear laden	950 kg	7,1 kg/cm ²	2,3 kg/cm ²	134 cm ²	417 cm ²

TYRES

MT 1332 H SL Turbo MONO-ULTRA Nacelle ORH Serie 1

228159 f

	DIMENSIONS	PRESSURE	TYRE LOAD		PRESSURE ON THE CONTACT SURFACE		AREA OF THE CONTACT	
					HARD GROUND	LIGHT GROUND	HARD GROUND	LIGHT GROUND
STANDARD	15,5/80-24 SGI TL 12PR GOODYEAR	4,5 Bar	Front unladen	2900 kg	10,7 kg/cm ²	2,9 kg/cm ²	272 cm ²	1017 cm ²
			Front laden	3300 kg	11,3 kg/cm ²	3 kg/cm ²	292 cm ²	1090 cm ²
			Rear unladen	2250 kg	9,6 kg/cm ²	2,5 kg/cm ²	235 cm ²	890 cm ²
			Rear laden	2000 kg	9,3 kg/cm ²	2,4 kg/cm ²	214 cm ²	836 cm ²
OPTION	440/80-24 T37 158B DUNLOP	4,5 Bar	Front unladen	2900 kg	8,9 kg/cm ²	2,5 kg/cm ²	325 cm ²	1173 cm ²
			Front laden	3300 kg	9,4 kg/cm ²	2,6 kg/cm ²	350 cm ²	1266 cm ²
			Rear unladen	2250 kg	8,2 kg/cm ²	2,3 kg/cm ²	275 cm ²	990 cm ²
			Rear laden	2000 kg	7,9 kg/cm ²	2,2 kg/cm ²	252 cm ²	908 cm ²
	18x19,5 16PR T35 STAB. TL DUNLOP	4,5 Bar	Front unladen	2900 kg	7,5 kg/cm ²	2,6 kg/cm ²	389 cm ²	1126 cm ²
			Front laden	3300 kg	7,9 kg/cm ²	2,6 kg/cm ²	419 cm ²	1248 cm ²
OPTION	15,5x25 12PR SGL DL 2A GOODYEAR	4,5 Bar	Front unladen	2900 kg	7,1 kg/cm ²	3,8 kg/cm ²	410 cm ²	760 cm ²
			Front laden	3300 kg	7,2 kg/cm ²	3,9 kg/cm ²	458 cm ²	841 cm ²
			Rear unladen	2250 kg	6,8 kg/cm ²	3,7 kg/cm ²	330 cm ²	610 cm ²
			Rear laden	2000 kg	7 kg/cm ²	3,7 kg/cm ²	287 cm ²	535 cm ²
OPTION	1200R24 X MINE D2 MICHELIN	6,5 Bar	Front unladen	2900 kg	5,1 kg/cm ²	1,4 kg/cm ²	565 cm ²	2083 cm ²
			Front laden	3300 kg	5,5 kg/cm ²	1,6 kg/cm ²	604 cm ²	2126 cm ²
			Rear unladen	2250 kg	4,5 kg/cm ²	1,1 kg/cm ²	501 cm ²	2018 cm ²
			Rear laden	2000 kg	4,2 kg/cm ²	1 kg/cm ²	477 cm ²	1983 cm ²
	15,5R25 XHA MICHELIN	4 Bar	Front unladen	2900 kg	3,2 kg/cm ²	1,47 kg/cm ²	916 cm ²	1974 cm ²
			Front laden	3300 kg	3,3 kg/cm ²	1,51 kg/cm ²	1010 cm ²	2190 cm ²
			Rear unladen	2250 kg	3,1 kg/cm ²	1,44 kg/cm ²	731 cm ²	1565 cm ²
			Rear laden	2000 kg	2,9 kg/cm ²	1,36 kg/cm ²	684 cm ²	1466 cm ²
	18R19,5 XF Tubeless *PR MICHELIN	6,5 Bar	Front unladen	2900 kg	3,8 kg/cm ²	1,75 kg/cm ²	769 cm ²	1660 cm ²
			Front laden	3300 kg	3,9 kg/cm ²	1,79 kg/cm ²	854 cm ²	1842 cm ²
			Rear unladen	2250 kg	3,6 kg/cm ²	1,65 kg/cm ²	632 cm ²	1363 cm ²
			Rear laden	2000 kg	3,5 kg/cm ²	1,60 kg/cm ²	579 cm ²	1249 cm ²

TYRES

MT 1637 SL Serie 1
 MT 1637 SL Turbo Serie 1
 MT 1637 SL Turbo MONO-ULTRA Serie 1

211025 q

	DIMENSIONS	PRESSURE	TYRE LOAD		PRESSURE ON THE CONTACT SURFACE		AREA OF THE CONTACT	
					HARD GROUND	LIGHT GROUND	HARD GROUND	LIGHT GROUND
STANDARD	440/80-24 T37 158B DUNLOP	4,5 Bar	Front unladen	2750 kg	8,7 kg/cm ²	2,4 kg/cm ²	315 cm ²	1135 cm ²
Front laden			6500 kg	13 kg/cm ²	3,6 kg/cm ²	501 cm ²	1810 cm ²	
Rear unladen			3000 kg	9 kg/cm ²	2,5 kg/cm ²	335 cm ²	1200 cm ²	
Rear laden			1150 kg	6,8 kg/cm ²	1,9 kg/cm ²	170 cm ²	614 cm ²	
OPTION	15,5R25 L2 1* VKT Tub fire BRIDGESTONE	5,6 Bar	Front unladen	2750 kg	8,3 kg/cm ²	3,8 kg/cm ²	330 cm ²	725 cm ²
Front laden			6500 kg	10,2 kg/cm ²	5 kg/cm ²	635 cm ²	1290 cm ²	
Rear unladen			3000 kg	8,3 kg/cm ²	3,9 kg/cm ²	360 cm ²	770 cm ²	
Rear laden			1150 kg	6,8 kg/cm ²	3 kg/cm ²	170 cm ²	383 cm ²	
OPTION	400/80-24 T37 156B DUNLOP	4,75 Bar	Front unladen	2750 kg	10 kg/cm ²	2,8 kg/cm ²	276 cm ²	998 cm ²
Front laden			6500 kg	14,4 kg/cm ²	4 kg/cm ²	450 cm ²	1631 cm ²	
Rear unladen			3000 kg	10,2 kg/cm ²	2,8 kg/cm ²	295 cm ²	1060 cm ²	
Rear laden			1150 kg	7,5 kg/cm ²	2,1 kg/cm ²	153 cm ²	548 cm ²	
OPTION	15,5x25 12PR SGL DL 2A GOODYEAR	4,5 Bar	Front unladen	2750 kg	7 kg/cm ²	3,8 kg/cm ²	394 cm ²	725 cm ²
			Front laden	6500 kg	8,6 kg/cm ²	4,6 kg/cm ²	760 cm ²	1400 cm ²
Rear unladen			3000 kg	7,1 kg/cm ²	3,9 kg/cm ²	420 cm ²	775 cm ²	
Rear laden			1150 kg	7,2 kg/cm ²	4,4 kg/cm ²	160 cm ²	260 cm ²	
OPTION	15,5/80-24 SGI TL 16PR GOODYEAR	4,5 Bar	Front unladen	2750 kg	10,7 kg/cm ²	2,9 kg/cm ²	257 cm ²	955 cm ²
			Front laden	6500 kg	14,3 kg/cm ²	3,9 kg/cm ²	455 cm ²	1660 cm ²
Rear unladen			3000 kg	11,1 kg/cm ²	3 kg/cm ²	270 cm ²	1000 cm ²	
Rear laden			1150 kg	7,8 kg/cm ²	2,1 kg/cm ²	148 cm ²	560 cm ²	
OPTION	445/70R24 XM47 TL 151G MICHELIN	4,1 Bar	Front unladen	2750 kg	2,3 kg/cm ²	kg/cm ²	1200 cm ²	cm ²
			Front laden	6500 kg	3,5 kg/cm ²	kg/cm ²	1870 cm ²	cm ²
			Rear unladen	3000 kg	2,4 kg/cm ²	kg/cm ²	1250 cm ²	cm ²
Rear laden			1150 kg	1,3 kg/cm ²	kg/cm ²	860 cm ²	cm ²	
OPTION	1200R24 X MINE D2 MICHELIN	6,5 Bar	Front unladen	2750 kg	4,9 kg/cm ²	1,3 kg/cm ²	551 cm ²	2066 cm ²
			Front laden	6500 kg	7,1 kg/cm ²	2,6 kg/cm ²	919 cm ²	2476 cm ²
			Rear unladen	3000 kg	5,2 kg/cm ²	1,4 kg/cm ²	575 cm ²	2094 cm ²
			Rear laden	1150 kg	2,9 kg/cm ²	0,6 kg/cm ²	394 cm ²	1863 cm ²
OPTION	15,5R25 XHA MICHELIN	4 Bar	Front unladen	2750 kg	3,1 kg/cm ²	1,45 kg/cm ²	880 cm ²	1893 cm ²
			Front laden	6500 kg	3,7 kg/cm ²	1,66 kg/cm ²	1766 cm ²	3917 cm ²
			Rear unladen	3000 kg	3,2 kg/cm ²	1,48 kg/cm ²	939 cm ²	2028 cm ²
			Rear laden	1150 kg	2,2 kg/cm ²	1,02 kg/cm ²	527 cm ²	1129 cm ²

TYRES

TMT 320

FRONT TYRES

	DIMENSIONS	PRESSURE	TYRE LOAD		PRESSURE ON THE CONTACT SURFACE		AREA OF THE CONTACT	
					HARD GROUND	LIGHT GROUND	HARD GROUND	LIGHT GROUND
STANDARD	10x16,5-10PR SOLIDEAL SKS	4,2 Bar	Unladen	700 kg	6,3 kg/cm ²	3,3 kg/cm ²	111 cm ²	214 cm ²
			Laden	1350 kg	7 kg/cm ²	3,5 kg/cm ²	193 cm ²	387 cm ²
OPTION	280/60-15,5 TWIN 421 TRELLEBORG	3,5 Bar	Unladen	700 kg	3,8 kg/cm ²	1,9 kg/cm ²	184 cm ²	368 cm ²
			Laden	1350 kg	3,8 kg/cm ²	1,9 kg/cm ²	355 cm ²	711 cm ²
OPTION	280/60-15,5 TWIN 421 TRELLEBORG	Mousse	Unladen	700 kg	3,8 kg/cm ²	1,9 kg/cm ²	184 cm ²	368 cm ²
			Laden	1350 kg	3,8 kg/cm ²	1,9 kg/cm ²	355 cm ²	711 cm ²
OPTION	10x16,5-8PR HAULER SKS	4 Bar	Unladen	700 kg	6,5 kg/cm ²	3,5 kg/cm ²	108 cm ²	198 cm ²
			Laden	1350 kg	7,1 kg/cm ²	3,7 kg/cm ²	190 cm ²	363 cm ²

REAR TYRES

	DIMENSIONS	PRESSURE	TYRE LOAD		PRESSURE ON THE CONTACT SURFACE		AREA OF THE CONTACT	
					HARD GROUND	LIGHT GROUND	HARD GROUND	LIGHT GROUND
STANDARD	10x16,5-10PR SOLIDEAL SKS	4,2 Bar	Unladen	1550 kg	7,3 kg/cm ²	3,6 kg/cm ²	213 cm ²	430 cm ²
			Laden	1550 kg	7,3 kg/cm ²	3,6 kg/cm ²	213 cm ²	430 cm ²
OPTION	280/60-15,5 TWIN 421 TRELLEBORG	3,5 Bar	Unladen	1550 kg	3,8 kg/cm ²	1,9 kg/cm ²	408 cm ²	816 cm ²
			Laden	1550 kg	3,8 kg/cm ²	1,9 kg/cm ²	408 cm ²	816 cm ²
OPTION	280/60-15,5 TWIN 421 TRELLEBORG	Mousse	Unladen	1550 kg	3,8 kg/cm ²	1,9 kg/cm ²	408 cm ²	816 cm ²
			Laden	1550 kg	3,8 kg/cm ²	1,9 kg/cm ²	408 cm ²	816 cm ²
OPTION	10x16,5-8PR HAULER SKS	4 Bar	Unladen	1550 kg	7,4 kg/cm ²	3,8 kg/cm ²	210 cm ²	408 cm ²
			Laden	1550 kg	7,4 kg/cm ²	3,8 kg/cm ²	210 cm ²	408 cm ²

CLICK HERE TO **DOWNLOAD** THE COMPLETE MANUAL

- Thank you very much for reading the preview of the manual.
- You can download the complete manual from: www.heydownloads.com by clicking the link below



- Please note: If there is no response to CLICKING the link, please download this PDF first and then click on it.

CLICK HERE TO **DOWNLOAD** THE COMPLETE MANUAL