

# **TravelMate 5330 Extensa 5230/5630Z Series Service Guide**

Service guide files and updates are available on the ACER/CSD web; for more information, please refer to <http://csd.acer.com.tw>

PRINTED IN TAIWAN

CLICK HERE TO **DOWNLOAD** THE COMPLETE MANUAL

- Thank you very much for reading the preview of the manual.
- You can download the complete manual from: [www.heydownloads.com](http://www.heydownloads.com) by clicking the link below



- Please note: If there is no response to CLICKING the link, please download this PDF first and then click on it.

CLICK HERE TO **DOWNLOAD** THE COMPLETE MANUAL

# System Specifications

---

## Features

Below is a brief summary of the computer's many feature:

### Platform

- Intel® Celeron® processor
- Mobile Intel® GL40 Express Chipset
- Acer InviLink™ 802.11b/g

### System Memory

- Dual-Channel DDR2 SDRAM support
- Up to 2 GB of DDR2 667 MHz memory, upgradeable to 4 GB using two soDIMM modules\*

### Display and graphics

- 15.4" WXGA 1280 x 800
- Mobile Intel® GL40 Express Chipset

### Storage subsystem

- 2.5" hard disk drives
- Optical drive options:
  - DVD-Super Multi double-layer drive
  - DVD/CD-RW combo drive
- 5-in-1 card reader

### Special keys and controls

- 88-/89-key keyboard
- Touchpad pointing device
- Empowering Key
- Easy-launch buttons: WLAN, Internet, email, Bluetooth, Acer Arcade™
- Acer MediaTouch keys: play/pause, stop, previous, next
- Volume wheel
- Acer Media Center remote control\*

### Audio

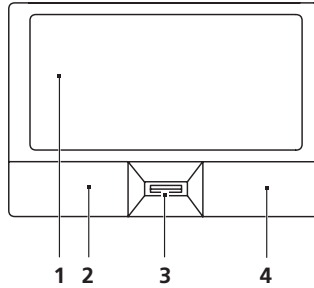
- Two built-in Acer 3DSonic stereo speakers
- High-definition audio support
- MS-Sound compatible
- Built-in microphones

### Communication

- Acer Video Conference, featuring:

# Touchpad Basics (with fingerprint reader)

The following items show you how to use the touchpad with Acer Bio-Protection fingerprint reader.

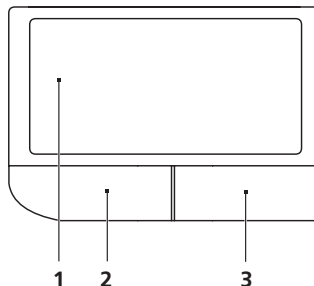


- Move your finger across the touchpad (2) to move the cursor.
- Press the left (1) and right (4) buttons located beneath the touchpad to perform selection and execution functions. These two buttons are similar to the left and right buttons on a mouse. Tapping on the touchpad is the same as clicking the left button.
- Use Acer Bio-Protection fingerprint reader (3) supporting Acer FingerNav 4-way control function (only for certain models) to scroll up or down and move left or right a page. This fingerprint reader or button mimics your cursor pressing on the right scroll bar of Windows applications.

Function	Left button (1)	Right button (4)	Main touchpad (2)	Center button (3)
Execute	Quickly click twice.		Tap twice (at the same speed as double-clicking a mouse button).	
Select	Click once.		Tap once.	
Drag	Click and hold, then use finger on the touchpad to drag the cursor.		Tap twice (at the same speed as double-clicking a mouse button); rest your finger on the touchpad on the second tap and drag the cursor.	
Access context menu		Click once.		
Scroll				Swipe up/down/left/right using Acer FingerNav 4-way control function (Manufacturing option).

# Touchpad basics (with two-click buttons)

The following items show you how to use the touchpad with two-click buttons.



- Move your finger across the touchpad (1) to move the cursor.

passwords, there will be no way to decrypt your encrypted file! **Be sure to safeguard all related passwords!**



## Acer eRecovery Management



Acer eRecovery Management is a versatile backup utility. It allows you to create full or incremental backups, burn the factory default image to optical disc, and restore from previously created backups or reinstall applications and drivers. By default, user-created backups are stored to the D:\ drive.

Acer eRecovery Management provides you with:

- Backup:
  - Back up factory default to CD/DVD
  - Back up drivers and applications to CD/DVD
  - Create user backup
  - Manage user backups
- Restore:
  - Restore system to factory default
  - Reinstall applications/drivers
  - Restore system from user backup
  - Password settings

To use the password protection feature of Acer eRecovery Management to protect your data, you must first set the Empowering Technology password. To set the password, refer to the section "**Empowering Technology password**".

### Hard Disk Drive Interface

Item				
Max. media transfer rate (disk-buffer, Mbytes/s)	540	540	540	850
DC Power Requirements				
Voltage tolerance	5V(DC) +/- 5%	5V(DC) +/- 5%	5V(DC) +/- 5%	5V(DC) +/- 5%

### Optical Disc Drive

Item	Specification	
Vendor & model name	TOSHIBA SUPER-MULTI DRIVE DL 8X TS-L633A LF PIONEER SUPER-MULTI DRIVE 8X DVR-TD08RS LF PANASONIC SUPER-MULTI DRIVE DL 8X UJ-870A LF HLDS SUPER-MULTI DRIVE TRAY DL 8X GSA-T50N LF HLDS SUPER-MULTI DRIVE DL 8X GSA-T50N LF SONY SUPER-MULTI DRIVE DL 8X AD-7560S LF PLDS SUPER-MULTI DRIVE DL 8X DS-8A2S LF	
Performance Specification	With CD Diskette	With DVD Diskette
Transfer rate (KB/sec)	Sustained: Max 3.6Mbytes/sec	Sustained: Max 10.08Mbytes/sec
Buffer Memory	2MB	
Interface	SATA	
Applicable disc format	<p>Applicable disc format</p> <p>CD: CD-DA, CD-ROM, CD-ROM XA, Photo CD (multi-session), Video CD, Cd-Extra (CD+), CD-text</p> <p>DVD: DVD-VIDEO, DVD-ROM, DVD-R (3.9GB, 4.7GB) DVD-R DL, DVD-RW, DVD-RAM, DVD+R, DVD+R DL, DVD+RW</p> <p>CD:</p> <p>CD-DA (Red Book) - Standard Audio CD &amp; CD-TEXT</p> <p>CD-ROM (Yellow Book Mode1 &amp; 2) - Standard Data</p> <p>CD-ROM XA (Mode2 Form1 &amp; 2) - Photo CD, Multi-Session</p> <p>CD-I (Green Book, Mode2 Form1 &amp; 2, Ready, Bridge)</p> <p>CD-Extra/ CD-Plus (Blue Book) - Audio &amp; Text/Video</p> <p>Video-CD (White Book) - MPEG1 Video</p> <p>CD-R (Orange Book Part)</p> <p>CD-RW &amp; HSRW (Orange Book Part Volume1 &amp; Volume 2)</p> <p>Super Audio CD (SACD) Hybrid type</p> <p>US &amp; US+ RW</p> <p>DVD:</p> <p>DVD-ROM (Book 1.02), DVD-Dual</p> <p>DVD-Video (Book 1.1)</p> <p>DVD-R (Book 1.0, 3.9G)</p> <p>DVD-R (Book 2.0, 4.7G) - General &amp; Authoring</p> <p>DVD+R (Version 1.0)</p> <p>DVD+RW</p> <p>DVD-RW (Non CPRM &amp; CPRM)</p> <p>DVD<sup>®</sup>R Dual</p>	

The table below describes the parameters in this screen. Settings in **boldface** are the default and suggested parameter settings.

Parameter	Description	Option
Supervisor Password Is	Shows the setting of the Supervisor password	<b>Clear</b> or Set
User Password Is	Shows the setting of the user password.	<b>Clear</b> or Set
HDD Password Is	Shows the setting of the hard disk password.	<b>Clear</b> or Set
Set Supervisor Password	Press Enter to set the supervisor password. When set, this password protects the BIOS Setup Utility from unauthorized access. The user can not either enter the Setup menu nor change the value of parameters.	
Set User Password	Press Enter to set the user password. When user password is set, this password protects the BIOS Setup Utility from unauthorized access. The user can enter Setup menu only and does not have right to change the value of parameters.	
Set HDD Password	Enter HDD Password.	
Password on Boot	Defines whether a password is required or not while the events defined in this group happened. The following sub-options are all requires the Supervisor password for changes and should be grayed out if the user password was used to enter setup.	<b>Disabled</b> or Enabled

**NOTE:** When you are prompted to enter a password, you have three tries before the system halts. Don't forget your password. If you forget your password, you may have to return your notebook computer to your dealer to reset it.

## Setting a Password

Follow these steps as you set the user or the supervisor password:

1. Use the "w" and "y" keys to highlight the Set Supervisor Password parameter and press the e key. The Set Supervisor Password box appears:

Set Supervisor Password

Enter New Password [                    ]

Confirm New Password [                    ]

2. Type a password in the "Enter New Password" field. The password length can not exceeds 8 alphanumeric characters (A-Z, a-z, 0-9, not case sensitive). Retype the password in the "Confirm New Password" field.

**IMPORTANT:** Be very careful when typing your password because the characters do not appear on the screen.

3. Press e.  
After setting the password, the computer sets the User Password parameter to "Set".
4. If desired, you can opt to enable the Password on boot parameter.
5. When you are done, press u to save the changes and exit the BIOS Setup Utility.

# Machine Disassembly and Replacement

---

This chapter contains step-by-step procedures on how to disassemble the notebook computer for maintenance and troubleshooting.

## Disassembly Requirements

To disassemble the computer, you need the following tools:

- Wrist grounding strap and conductive mat for preventing electrostatic discharge
- Flat screwdriver
- Philips screwdriver
- Hex screwdriver
- Plastic flat screwdriver
- Plastic tweezers

**NOTE:** The screws for the different components vary in size. During the disassembly process, group the screws with the corresponding components to avoid mismatch when putting back the components.

CLICK HERE TO **DOWNLOAD** THE COMPLETE MANUAL

- Thank you very much for reading the preview of the manual.
- You can download the complete manual from: [www.heydownloads.com](http://www.heydownloads.com) by clicking the link below



- Please note: If there is no response to CLICKING the link, please download this PDF first and then click on it.

CLICK HERE TO **DOWNLOAD** THE COMPLETE MANUAL

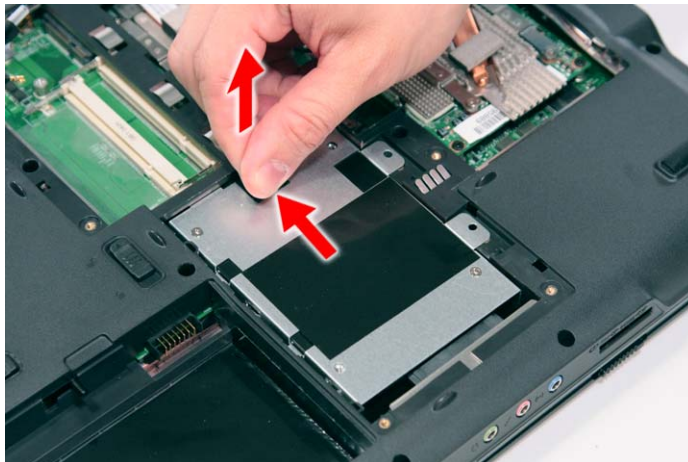
## Removing the Hard Disk Drive Module

1. See “Removing the Battery Pack” on page 54.
2. See “Removing the Lower Cover” on page 57.
3. Remove the one screw (B) securing the hard disk drive module.



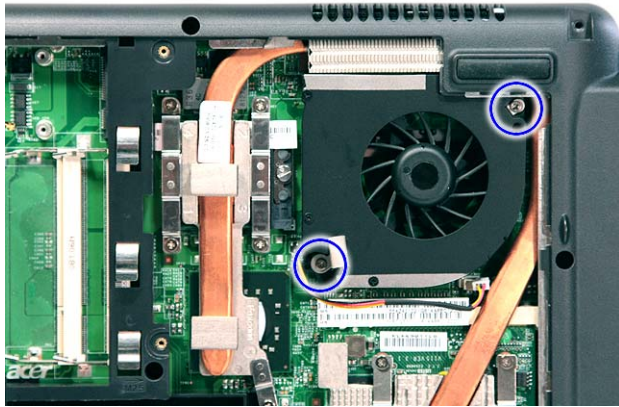
Step	Size (Quantity)	Color	Torque
1	M2 x L4 (1)	Silver	1.6 kgf-cm

4. Using the plastic tab, slide the hard disk drive module away from the connector; lift up the hard disk module to remove from the bay.



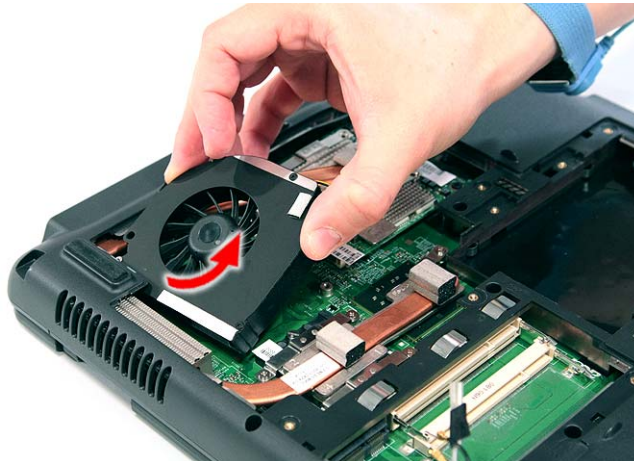
**NOTE:** To prevent damage to device, avoid pressing down on it or placing heavy objects on top of it.

4. Remove the two screws (B) securing the heatsink fan module in place.



Step	Size (Quantity)	Color	Torque
1~2	M2 x L4 (2)	Silver	1.6 kgf-cm

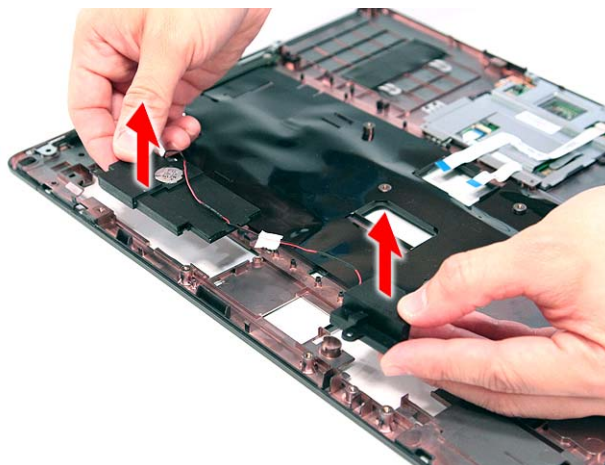
5. Carefully lift up the heatsink fan module.



## Removing the CPU and VGA Heatsink Module

1. See “Removing the Battery Pack” on page 54.
2. See “Removing the Lower Cover” on page 57.
3. See “Removing the Heatsink Fan Module” on page 70.

- 
18. Remove the left and right speaker modules from the upper case.



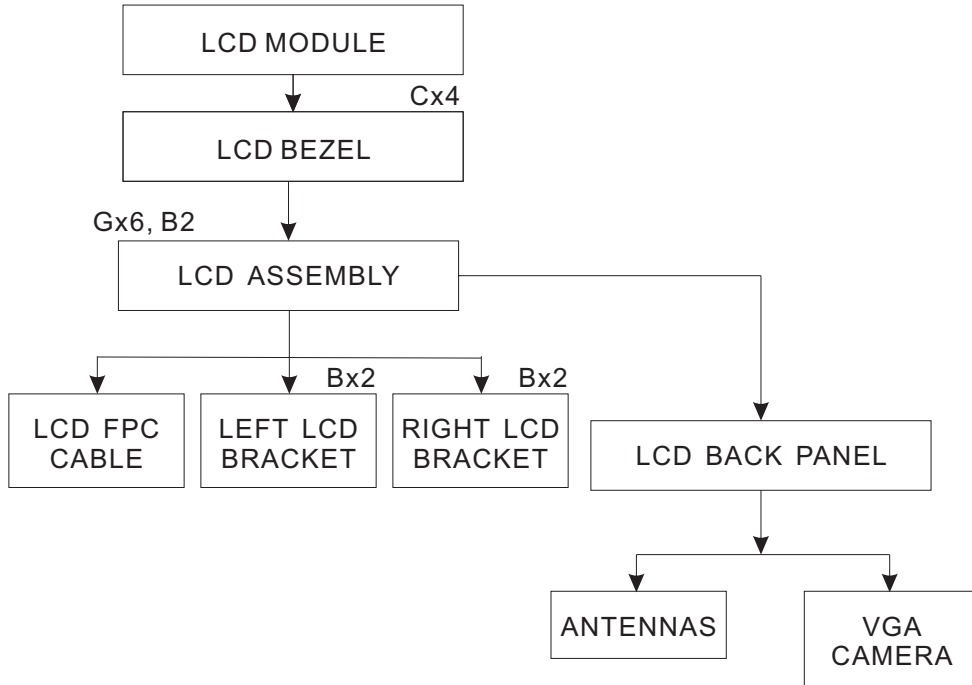
## Removing the Launch Board

1. See "Removing the Battery Pack" on page 54.
2. See "Removing the SD dummy card" on page 55.
3. See "Removing the PC and ExpressCard dummy cards" on page 56.
4. See "Removing the Lower Cover" on page 57.
5. See "Removing the DIMM" on page 58.
6. See "Removing the WLAN Board Modules" on page 59.
7. See "Removing the Hard Disk Drive Module" on page 61.
8. See "Removing the Optical Drive Module" on page 62.
9. See "Removing the Middle Cover" on page 66.
10. See "Removing the Keyboard" on page 69.
11. See "Removing the Heatsink Fan Module" on page 70.
12. See "Removing the CPU and VGA Heatsink Module" on page 71.
13. See "Removing the CPU" on page 72.
14. See "Removing the VGA Board (Discrete Model only)" on page 73.
15. See "Removing the LCD Module" on page 74.
16. See "Separating the Upper Case from the Lower Case" on page 76.

# LCD Module Disassembly Process

## LCD Module Disassembly Flowchart

### LCD MODULE DISASSEMBLY



### Screw List

Item	Screw	Color	Part No.
B	M2 x L4	Silver	86.9A552.4R0
C	M2.5 x L5	Black	86.00E33.736
G	M2.5 x L5	Black	86.00F87.735

# Troubleshooting

Use the following procedure as a guide for computer problems.

**NOTE:** The diagnostic tests are intended to test only Acer products. Non-Acer products, prototype cards, or modified options can give false errors and invalid system responses.

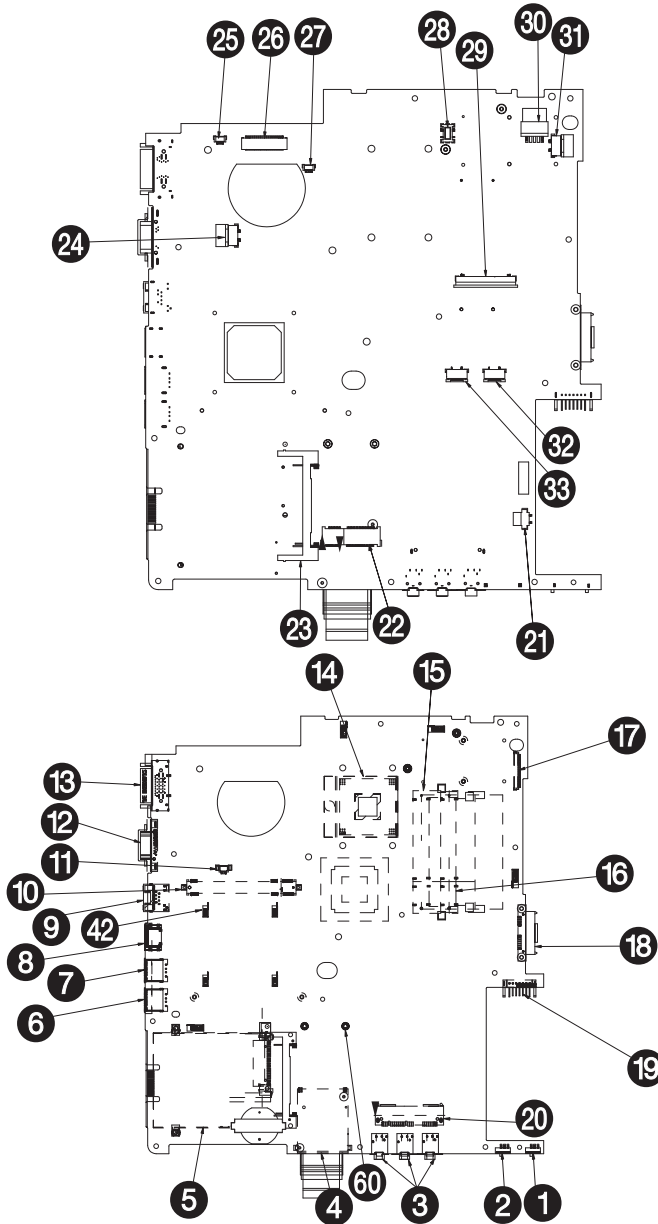
1. Obtain the failing symptoms in as much detail as possible.
2. Verify the symptoms by attempting to re-create the failure by running the diagnostic test or by repeating the same operation.
3. Use the following table with the verified symptom to determine which page to go to.


Symptoms (Verified)	Go To
Power failure. (The power indicator does not go on or stay on.)	"Power System Check" on page 103.
POST does not complete. No beep or error codes are indicated.	"Power-On Self-Test (POST) Error Message" on page 106 "Undetermined Problems" on page 120
POST detects an error and displayed messages on screen.	"Error Message List" on page 107
Other symptoms (i.e. LCD display problems or others).	"Power-On Self-Test (POST) Error Message" on page 106
Symptoms cannot be re-created (intermittent problems).	Use the customer-reported symptoms and go to "Power-On Self-Test (POST) Error Message" on page 106 "Intermittent Problems" on page 119 "Undetermined Problems" on page 120

Code	Beeps	POST Routine Description
3Ch		Advanced configuration of chipset registers
3Dh		Load alternate registers with CMOS values
42h		Initialize interrupt vectors
45h		POST device initialization
46h	2-1-2-3	Check ROM copyright notice
48h		Check video configuration against CMOS
49h		Initialize PCI bus and devices
4Ah		Initialize all video adapters in system
4Bh		QuietBoot start (optional)
4Ch		Shadow video BIOS ROM
4Eh		Display BIOS copyright notice
50h		Display CPU type and speed
51h		Initialize EISA board
52h		Test keyboard
54h		Set key click if enabled
58h	2-2-3-1	Test for unexpected interrupts
59h		Initialize POST display service
5Ah		Display prompt "Press F2 to enter SETUP"
5Bh		Disable CPU cache
5Ch		Test RAM between 512 and 640 KB
60h		Test extended memory
62h		Test extended memory address lines
64h		Jump to User Patch1
66h		Configure advanced cache registers
67h		Initialize Multi Processor APIC
68h		Enable external and CPU caches
69h		Setup System Management Mode (SMM) area
6Ah		Display external L2 cache size
6Bh		Load custom defaults (optional)
6Ch		Display shadow-area message
6Eh		Display possible high address for UMB recovery
70h		Display error messages
72h		Check for configuration errors
76h		Check for keyboard errors
7Ch		Set up hardware interrupt vectors
7Eh		Initialize coprocessor if present
80h		Disable onboard Super I/O ports and IRQs
81h		Late POST device initialization

# Jumper and Connector Locations

## Top and Bottom View



Category	No.	Part Name and Description	Acer Part No.
		HDD 120GB 5400RPM SATA II HGST HTS542512K9SA00 BRONCO-B LF	KH.12007.014
		HDD 120GB 5400RPM SATA SEAGATE ST9120817AS LF	KH.12001.032
		HDD 120GB 5400RPM SATA TOSHIBA MK1246GSX LF	KH.12004.007
		HDD 120GB 5400RPM SATA WD WD1200BEVS-22UST0 ML125 LF	KH.12008.019
		HDD 160GB WD WD1600BEVT-22ZCT0	KH.16008.022
		HDD 160GB 5400RPM SATA II HITACHI HTS541616J9SA00 LF	KH.16007.016
		HDD 160GB SEAGATE SATA ST9160827AS	KH.16001.029
		HDD 160GB 5400RPM SATA TOSHIBA MK1646GSX LF	KH.16004.002
		HDD 250GB SEAGATE SATA ST9250827AS	KH.25001.011
		HDD 250GB 5400RPM SATA TOSHIBA MK2546GSX LF	KH.25004.001
		HDD 250GB 5400RPM SATA II HGST HTS542525K9SA00 LF	KH.25007.011
		HDD 250GB 5400RPM SATA WD WD2500BEVS-22UST0 ML125	KH.25008.018
		HDD 320GB 5400RPM SATA WD WD3200BEVT-22ZCT0 ML125	KH.32008.013
	<b>Keyboard</b>		
		KEYBOARD 14_15KB-FV3 BLACK E88KS US INTERNATIONAL (ASPIRE BLACK)	KB.INT00.442
		KEYBOARD 14_15KB-FV3 BLACK E88KS US INTERNATIONAL HEBREW (ASPIRE BLACK)	KB.INT00.443
		KEYBOARD 14_15KB-FV3 BLACK E89KS UK (ASPIRE BLACK)	KB.INT00.444
		KEYBOARD 14_15KB-FV3 BLACK E89KS TURKISH (ASPIRE BLACK)	KB.INT00.445
		KEYBOARD 14_15KB-FV3 BLACK E88KS THAILAND (ASPIRE BLACK)	KB.INT00.446
		KEYBOARD 14_15KB-FV3 BLACK E89KS SWISS/G (ASPIRE BLACK)	KB.INT00.447
		KEYBOARD 14_15KB-FV3 BLACK E89KS SWEDISH (ASPIRE BLACK)	KB.INT00.448
		KEYBOARD 14_15KB-FV3 BLACK E89KS SPANISH (ASPIRE BLACK)	KB.INT00.449
		KEYBOARD 14_15KB-FV3 BLACK 89KS SLO/CRO (ASPIRE BLACK)	KB.INT00.451
		KEYBOARD 14_15KB-FV3 BLACK E88KS RUSSIAN (ASPIRE BLACK)	KB.INT00.452
		KEYBOARD 14_15KB-FV3 BLACK E89KS PORTUGUESE (ASPIRE BLACK)	KB.INT00.453
		KEYBOARD 14_15KB-FV3 BLACK E89KS POLISH (ASPIRE BLACK)	KB.INT00.454

CLICK HERE TO **DOWNLOAD** THE COMPLETE MANUAL

- Thank you very much for reading the preview of the manual.
- You can download the complete manual from: [www.heydownloads.com](http://www.heydownloads.com) by clicking the link below



- Please note: If there is no response to CLICKING the link, please download this PDF first and then click on it.

CLICK HERE TO **DOWNLOAD** THE COMPLETE MANUAL