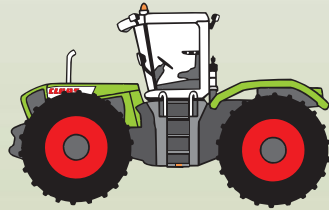


CLAAS



XERION 3300 TRAC VC

Anbauanleitung

Umkehrlüfter

Fitting Instructions

Reversing blower

Notice de montage

Ventilateur réversible

SERVICE & PARTS

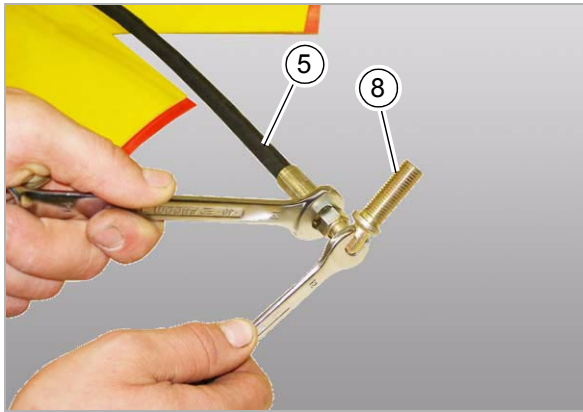
CLICK HERE TO **DOWNLOAD** THE COMPLETE MANUAL

- Thank you very much for reading the preview of the manual.
- You can download the complete manual from: www.heydownloads.com by clicking the link below



- Please note: If there is no response to CLICKING the link, please download this PDF first and then click on it.

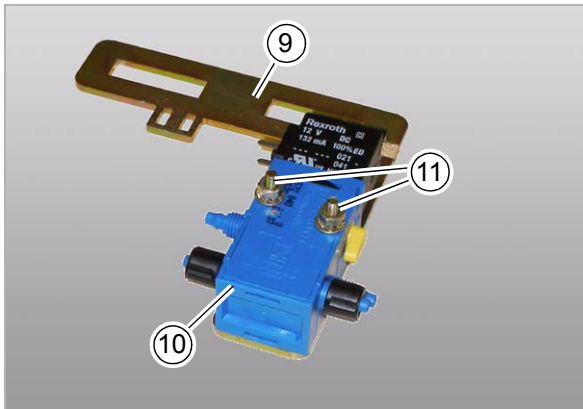
CLICK HERE TO **DOWNLOAD** THE COMPLETE MANUAL



18413

4

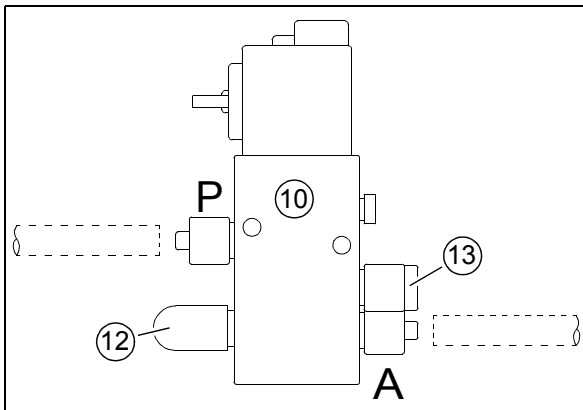
– Winkelstutzen (8) an Schlauch (5) anschrauben.



18415

5

– Blech (9) und Ventil (10) mit Schrauben (11), Fächerscheiben und Scheiben verschrauben.

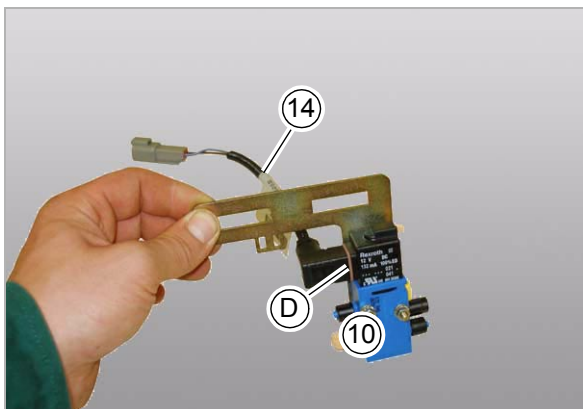


18425

6

– Verschlussstopfen (13) und Schalldämpfer (12) am Ventil (10) einschrauben.

Die Anschlüsse am Ventil sind mit Buchstaben gekennzeichnet.



18424

7

– Würfelstecker des Kabelsatzes (14) am Ventil (10) anschließen.
Dichtung (D) nicht vergessen.

4.1.2 Zentralelektrik umrüsten (bis Maschinen-Nr. 78100109)

Bis Maschinen-Nr. 78100109:

- Ablagefächer (A) und (B) heraus nehmen.



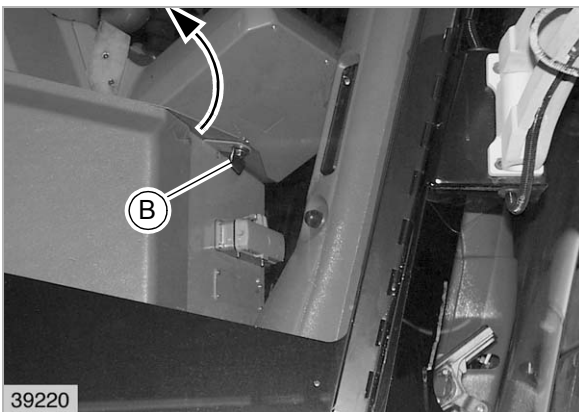
36

18462



37

19339



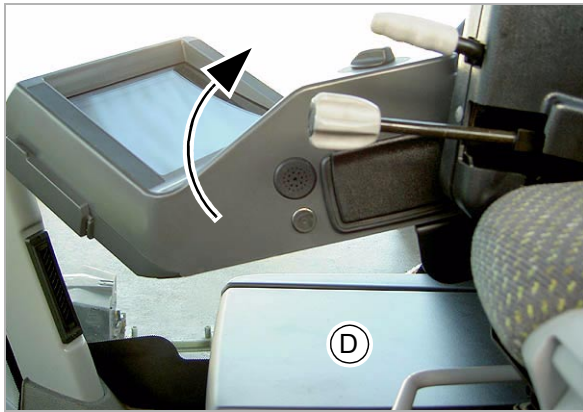
38

39220

- Rechte Kabinentür ganz öffnen.

Bis Maschinen-Nr. 78100109:

- Drehverschluss (B) unterhalb des Bildschirms lösen.
- Bedienpult nach hinten hochschwenken.



74

6965



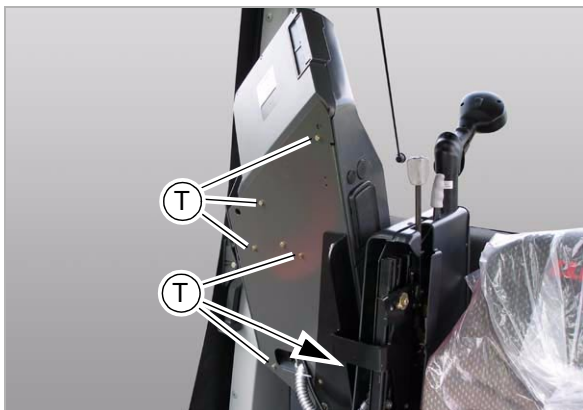
75

6966



76

18459



77

18458

Ab Maschinen-Nr. 78100110:

- Fahrersitz mit Bedienpult ganz nach vorne schieben.
- Bedienpult nach hinten hochschwenken.
- Deckel (D) abnehmen.

- Rechte Kabinentür ganz öffnen.

Ab Maschinen-Nr. 78100110:

- Schrauben (S) rundherum heraus schrauben.
- Gehäuse (G) ausbauen.

Ab Maschinen-Nr. 78100110:

- Alle neun Schrauben (T) heraus schrauben.
Beachten! Vor der letzten Schraube, das Bedienpult stützen.

2.1.2 Identification of warning and danger signs

All parts of this manual having to do with your safety or the safe operation of the front attachment or the machine are marked with the following signs. Please pass on all safety precautions to any other users of the machine as well.

**Danger!**

Nature and source of danger

Consequences: death or serious injury

– Countermeasures

**Warning!**

Nature and source of danger

Consequences: injuries

– Countermeasures

**Caution!**

Nature and source of danger

Consequences: material damage

– Countermeasures

**Note!**

Nature and source of information

Consequences: enhanced machine economy or easy assembly

– Measures

**Environment!**

Nature and source of danger

Consequences: damage to the environment

– Countermeasures

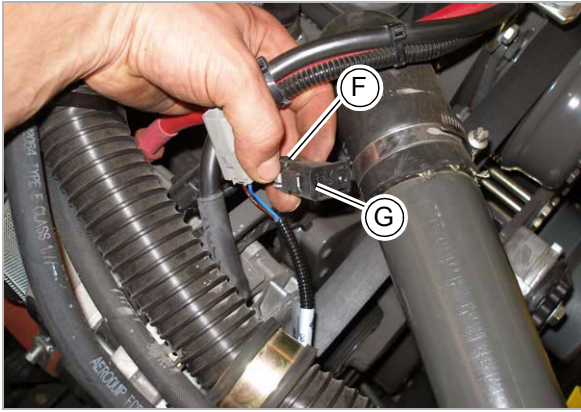
CLICK HERE TO **DOWNLOAD** THE COMPLETE MANUAL

- Thank you very much for reading the preview of the manual.
- You can download the complete manual from: www.heydownloads.com by clicking the link below



- Please note: If there is no response to CLICKING the link, please download this PDF first and then click on it.

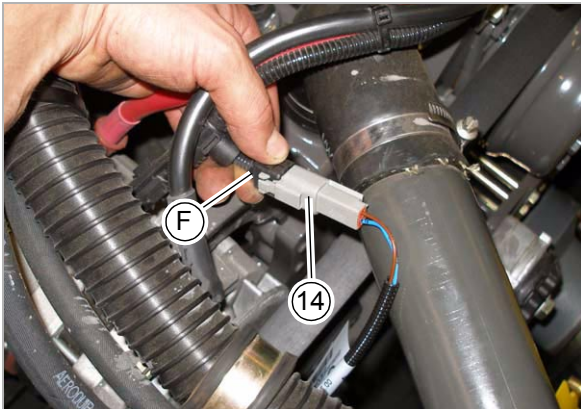
CLICK HERE TO **DOWNLOAD** THE COMPLETE MANUAL



26

18435

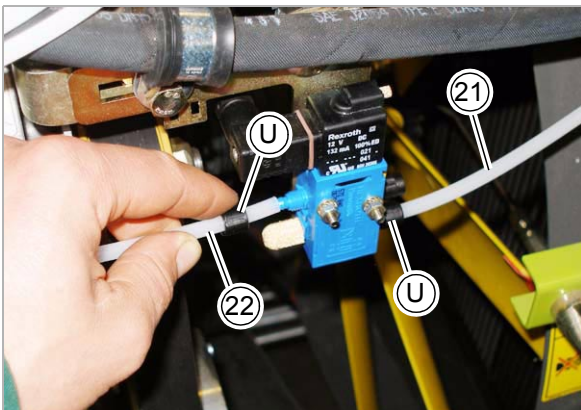
- Remove protective cap (G) from connector coupling (F).



27

18436

- Insert plug of the cable set (14) into connector coupling (F) until connector engages.



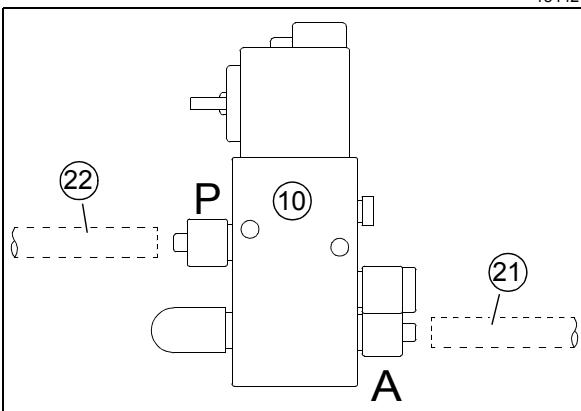
28

18442

- Attach hoses (21) and (22) to the valve (10).
 - Slide nuts (U) onto hose.
 - Slide hose ends onto connection points of the valve.
 - Attach nuts (U) tightly to the valve.

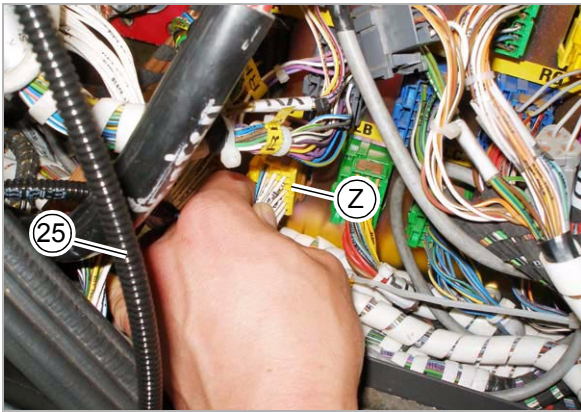
Assembly of hoses (as designated on the valve):

- A = Hose (21) coming from axial blower (280 mm piece)
- P = Hose (22) to the compressed air tank (approx. 6000 mm)



29

18425

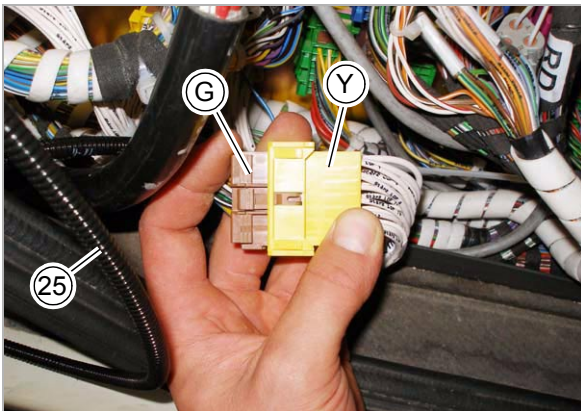


59

19075

Up to machine no. 78100109:

- Insert connector "LOf" (S) of the adapter cable (25) into plug-in position "LO".



60

19077

Up to machine no. 78100109:

- Connect connector coupling "LOm" (Y) of the adapter cable (25) with connector (G).

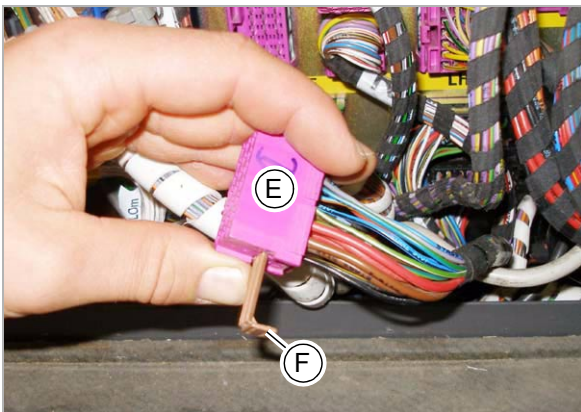


61

19076

Up to machine no. 78100109:

- Withdraw connector (E) from plug-in position "DI".

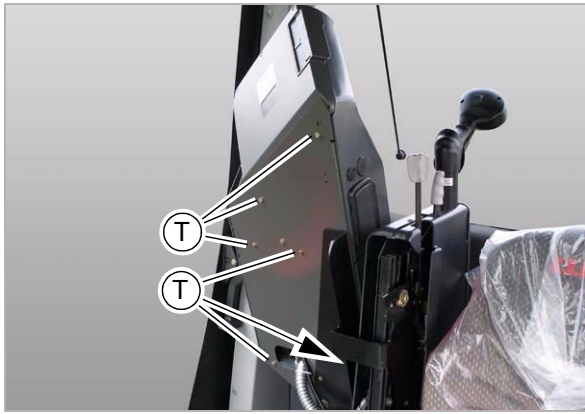


62

19079

Up to machine no. 78100109:

- Pull cable out slightly.
- Withdraw secondary locking device (F) of the connector (E).



98

18458

From machine no. 78100110:

- Insert screws (T).



99

18462

From machine no. 78100110:

- Insert storage compartment (A).



100

18459

From machine no. 78100110:

- Insert housing (G) and secure with screws (S).

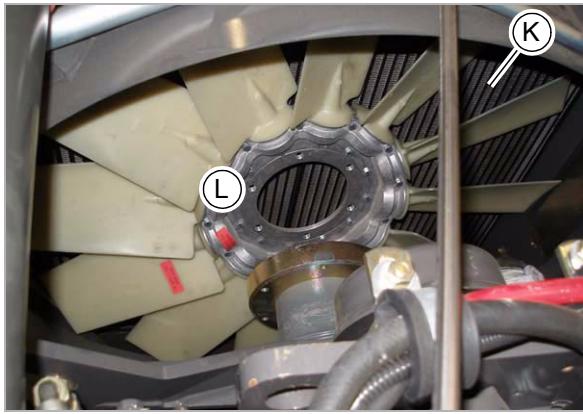


101

18460

From machine no. 78100110:

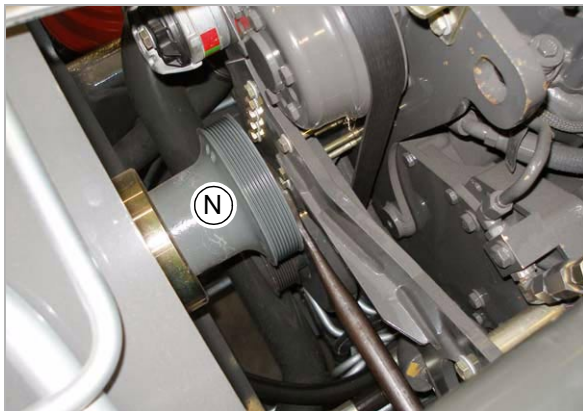
- Insert and close cover (D).



10

18401

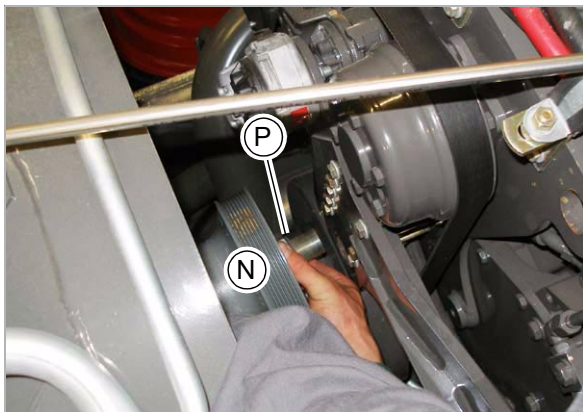
- Adosser prudemment le ventilateur axial (L) sur le radiateur (K).



11

18400

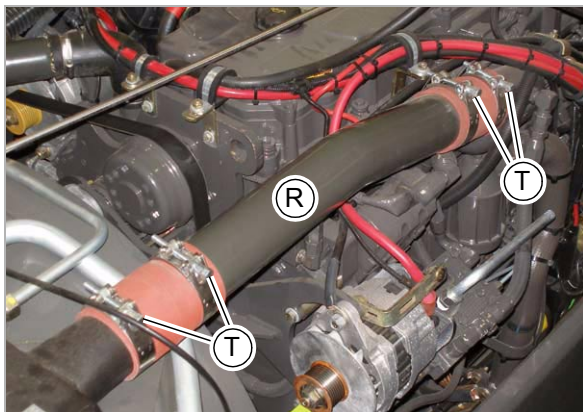
- Dévisser le moyeu du ventilateur (N) du moteur.



12

18405

- Retirer le moyeu (N) avec la rondelle d'ajustage (P).



13

18402

- Desserrer le collier de serrage (T).
- Démonter le conduit (R).



19329

43

Jusqu'au n° de machine 78100109

- Retirer l'interrupteur (H) des rétroviseurs chauffants de son boîtier (K).

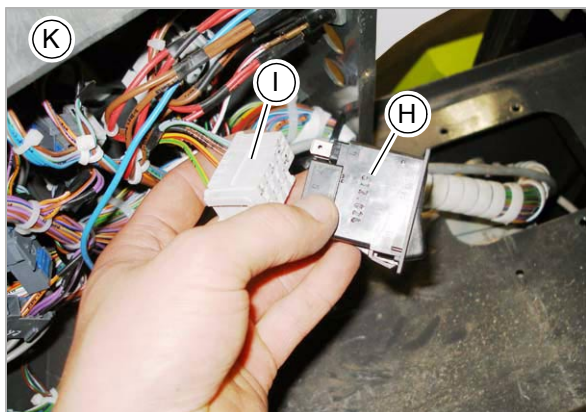


19330

44

Jusqu'au n° de machine 78100109

- Séparer le connecteur (I) de l'interrupteur (H).

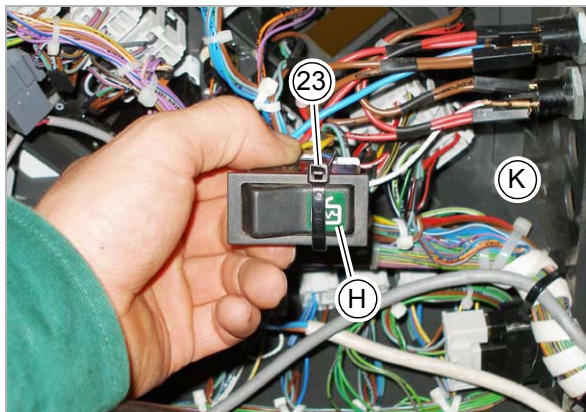


19331

45

Jusqu'au n° de machine 78100109

- Sur la face inférieure du boîtier (K), raccorder de nouveau le connecteur (I) à l'interrupteur (H).

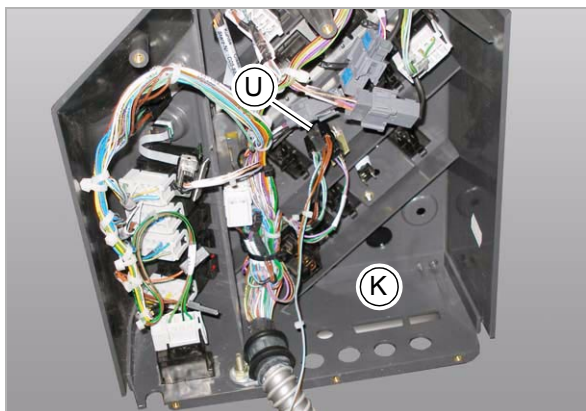


19332

46

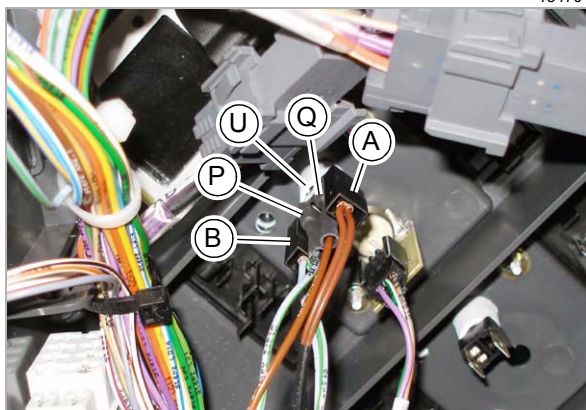
Jusqu'au n° de machine 78100109

- Actionner l'interrupteur (H).
- Fixer la position de l'interrupteur à l'aide du collier pour câbles (23).



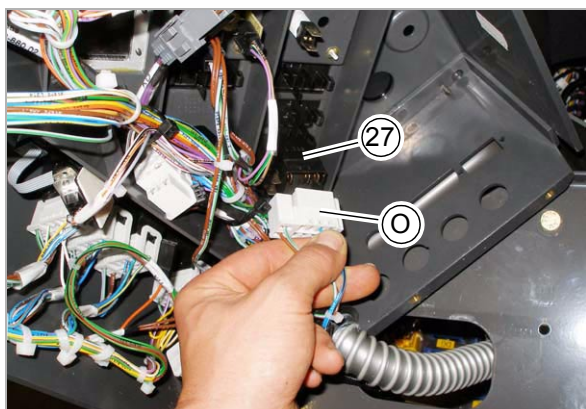
18470

82



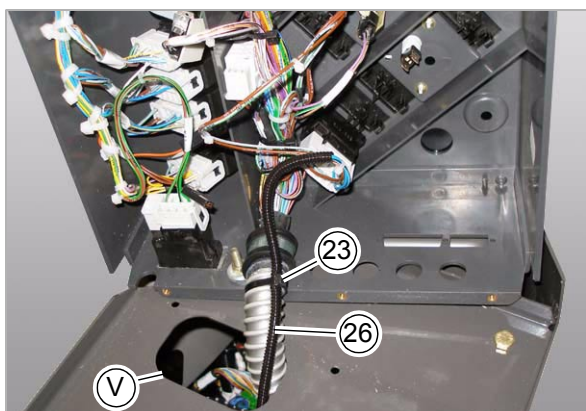
18475

83



18453

84



18493

85

À partir du n° de machine 78100110

Face inférieure du boîtier (K):

- Sur la prise (U), retirer le connecteur marron (A) présent.
- Relier le connecteur (A) au connecteur (Q).
- Placer le connecteur (Q) sur la prise (U).
- Répéter la procédure pour les connecteurs (B) et (P) avec les câble vert-gris.

À partir du n° de machine 78100110

- Placer le connecteur (O) sur la face inférieure de l'interrupteur (27).

À partir du n° de machine 78100110

- Faire passer le câble adaptateur (26) par l'ouverture (V).
- Fixer le câble adaptateur (26) à l'aide du collier pour câbles (23).

CLICK HERE TO **DOWNLOAD** THE COMPLETE MANUAL

- Thank you very much for reading the preview of the manual.
- You can download the complete manual from: www.heydownloads.com by clicking the link below



- Please note: If there is no response to CLICKING the link, please download this PDF first and then click on it.

CLICK HERE TO **DOWNLOAD** THE COMPLETE MANUAL