

QUANTUM 6800 S  
QUANTUM 5500 S-18  
QUANTUM 5500 S-16  
QUANTUM 5500 S  
QUANTUM 4500 S

## **ANBAUANLEITUNG**

### ***3. Dosierwalze***

## **FITTING INSTRUCTIONS**

### ***3rd shredder drum***

## **AANBOUWHANDLEIDING**

### ***3. Doseerwals***

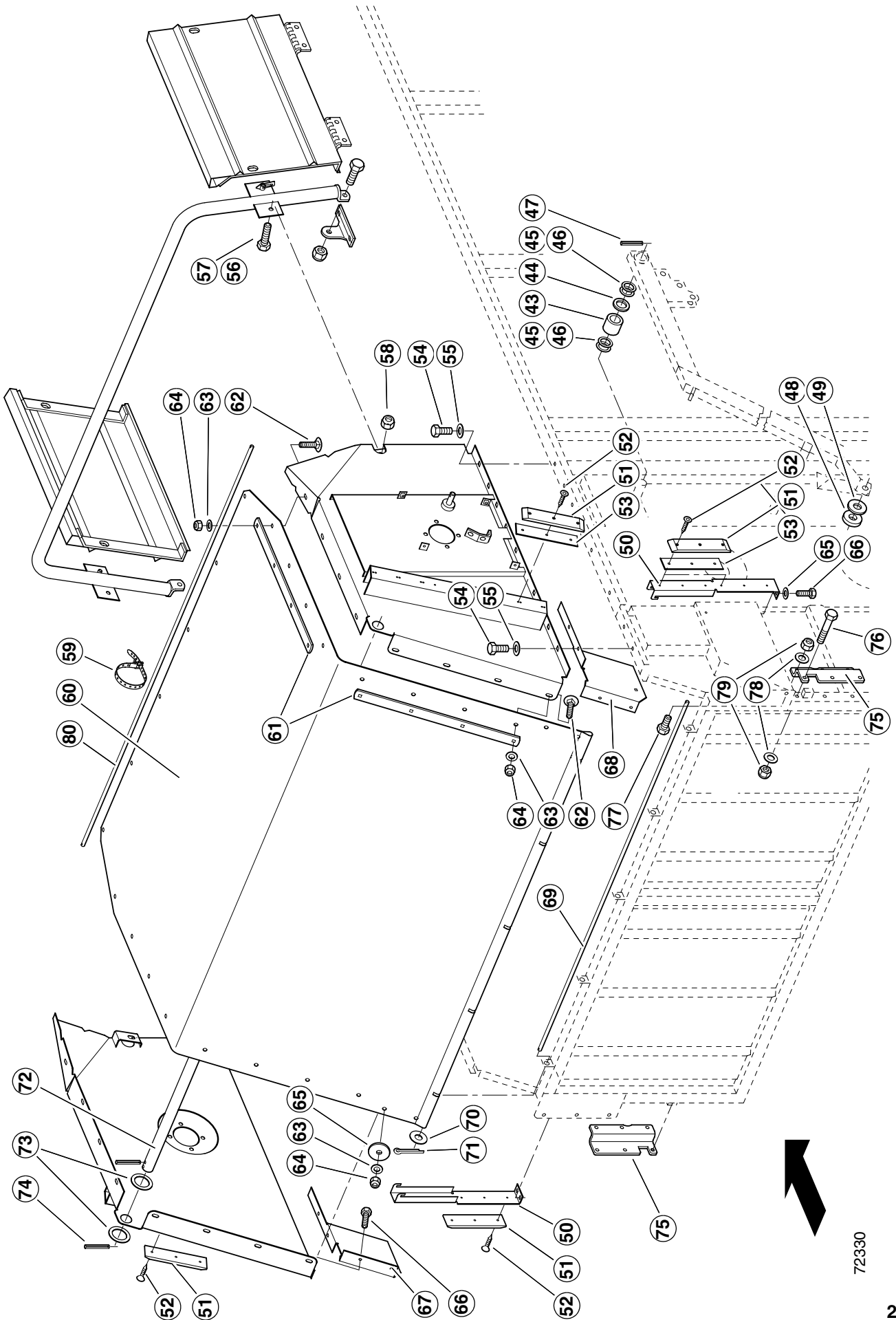
CLICK HERE TO **DOWNLOAD** THE COMPLETE MANUAL

- Thank you very much for reading the preview of the manual.
- You can download the complete manual from: [www.heydownloads.com](http://www.heydownloads.com) by clicking the link below



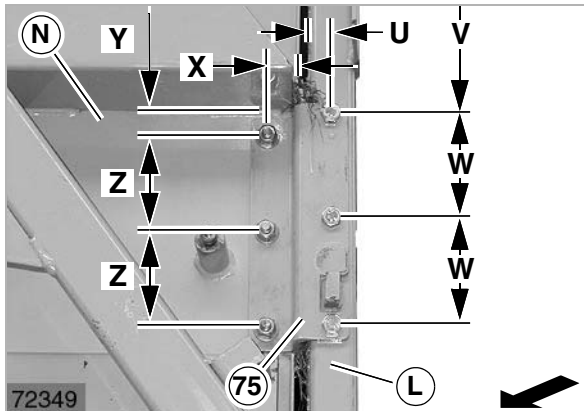
- Please note: If there is no response to CLICKING the link, please download this PDF first and then click on it.

CLICK HERE TO **DOWNLOAD** THE COMPLETE MANUAL



72330

**WEITERE MONTAGE BEI ALLEN MASCHINEN**



9

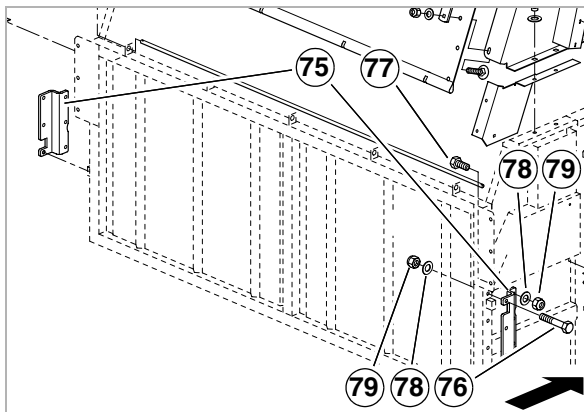
Bohrungen für Befestigungswinkel (75) herstellen.  
Für die Befestigung der Befestigungswinkel (75) links und rechts an der Klappe folgende Durchgangsbohrungen  $\varnothing$  11 mm bohren.

- U = 20 mm (mittig)
- V = 353 mm (Abstand von oben)
- W = 99,5 mm

Für die Befestigung der Befestigungswinkel (75) links und rechts an den Seitenwänden folgende Durchgangsbohrungen  $\varnothing$  11 mm bohren.

- X = 40 mm
- Y = 30 mm
- Z = 91,5 mm

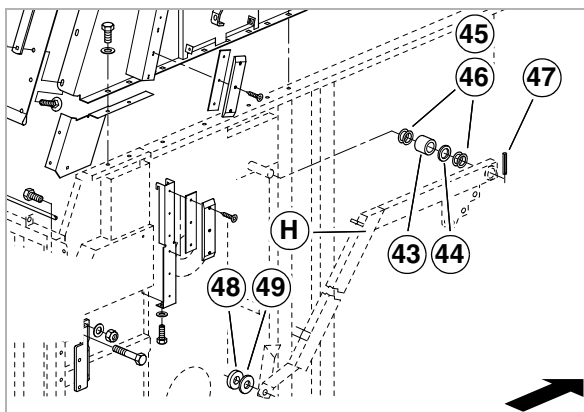
(Abb. 9)



10

- Befestigungswinkel (75) links und rechts an der Klappe mit Sechskantschrauben (76) (je 3x), Contact-Scheiben (78) und Sicherungsmuttern (79) montieren.
- Befestigungswinkel (75) links und rechts an der Seitenwand links und rechts mit Sechskantschrauben (77) (je 3x), Contact-Scheiben (78) und Sicherungsmuttern (79) montieren.

(Abb. 10)



11

Strebe (H) links und rechts montieren.

- Strebe (H) links und rechts an der Seitenwand mit Scheiben (45, 46), Rohr (43), Scheibe (44) und Spannstift (47) montieren.

**! Beachten!**

Axiales Spiel der Streben (H) mit den Scheiben (45, 46) ausgleichen.

- Strebe (H) links und rechts an der unteren Klappe mit Scheiben (48, 49) und den vorhandenen Sechskantschrauben montieren.

(Abb. 11)

## 2 Table of contents

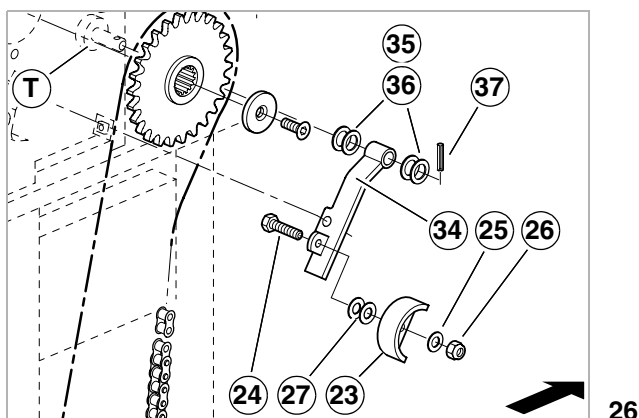
<b>1. Introduction</b>	
Introduction .....	1.1
<b>2. Table of contents</b>	
<b>3. General instructions</b>	
Of special importance .....	3.1
Identification of warnings and dangers .....	3.1
Designated use .....	3.2
Safety decals with warning symbols .....	3.2
General safety instructions .....	3.2
<b>4. Package list</b>	
Package list for mounting kit 3rd shredder drum .....	4.3
Mounting kit: 973 576.0 .....	4.3
Package list continued for mounting kit 3rd shredder drum .....	4.5
Mounting kit: 973 576.0 .....	4.5
Package list continued for mounting kit 3rd shredder drum – to machine no. 614 0 2242 (inclined version) .....	4.7
Mounting kit: 973 576.0 .....	4.7
Package list continued for mounting kit 3rd shredder drum – from machine no. 614 0 2243 (straight version) .....	4.9
Mounting kit: 973 576.0 .....	4.9
<b>5. Removing sheet metal parts</b>	
Removing sheet metal parts .....	5.1
<b>6. Installing 3rd shredder drum</b>	
Shredder drum assembly to machine no. 614 0 2242 (inclined version) .....	6.1
Shredder drum assembly from machine no. 614 0 2243 (straight version) .....	6.2
Shredder drum assembly to machine no. 614 0 2242 (inclined version) .....	6.3
Drill holes on end plate (QUANTUM 5500 S / S-18 / S-16 and 4500). .....	6.3
Mount shredder drum (1) .....	6.3
Shredder drum assembly from machine no. 614 0 2243 (straight version) .....	6.4
Drill holes on end plate (QUANTUM 5500 S / S-18 / S-16 and 4500). .....	6.4
Mount shredder drum (1) .....	6.4
Continuing assembly for all machines .....	6.5
Installing lubrication lines .....	6.7
Installing shredder drum drive .....	6.9
Installing guard covers .....	6.11
Functional check .....	6.11
Check and observe the following before putting into operation .....	6.12

---

**PACKAGE LIST CONTINUED FOR MOUNTING KIT 3RD SHREDDER DRUM  
– FROM MACHINE NO. 614 0 2243 (STRAIGHT VERSION)****Mounting kit: 973 576.0**

Item no.	Part no.	Designation	Dimensions	DIN	Number	Remarks
99	973 985.0	Side panel left			1	
100	973 987.0	Side panel right			1	
101	973 899.0	Bracket 1				
102	493 040.0	Panel			2	5500 S
103	493 059.0	Panel			2	4500 S

(Fig. 4)



26

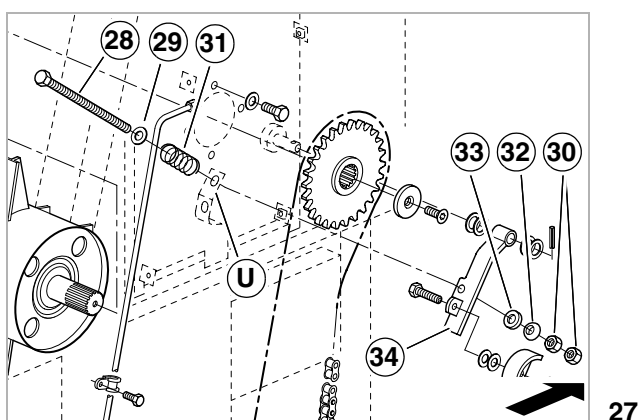
Installing chain tensioner (34)

- Mount clamping unit (23) on chain tensioner (34) with hexagon head bolt (24), washer (27), contact washer (25) and self-locking nut (26).
- Slide chain tensioner (34) with washers (35, 36) on to pivots (T) and secure with expansion pin (37).



**Important!**

Position chain tensioner with washers so the roller chain (46) is centred on the clamping unit (46).



27

(Fig. 26)

- Insert hexagon head bolt (28) with washer (29) and pressure spring (31) through the retainer angle (U) in the side panel and through the chain tensioner (34).
- Install conical socket (33) and spherical washer (32).
- Tighten hexagonal nut (30) until the chain is correctly tensioned.  
See operator's manual for correct chain tension.
- Lock with hexagonal nut (30).

(Fig. 27)

## LEVERINGSOMVANG VOOR AANBOUWSET 3DE DOSEERWALS

## Aanbouwset: 973 576.0

Pos.-nr.	Onderdeelnr.	Benaming	Afmetingen	DIN	Aantal	Opmerking
10	971 367.1	Freeswals gelast			1	
11	963 437.0	Afstandring	50x65x12		1	
12	963 433.0	Lagerflens	ø85x165x32		1	
13	238 389.0	Spanlager zonder spanring	GE45KRRBFA140/154		1	
14	239 156.0	Inschroefaansluitstuk	LL5M		3	
15	233 884.0	Haaks inschroefaansluitstuk	LL5M		1	
16	236 056.0	Zeskantschroef	M12x25	4017	8	
17	239 389.0	Contactplaatje	A12		8	
18	963 449.0	Lagerflens	ø72x160x31		1	
19	233 618.0	Spanlager zonder spanring	YEL 207-S		1	
20	973 204.0	Rol	ø50H9x40		1	
21	233 284.0	Platverzonken schroef	M10x25	963	3	
22	973 602.0	Onderlegplaatje	10,5x60x5		3	
23	927 321.0	Spanstuk			1	
24	235 532.0	Zeskantschroef	M10x40	4014	1	
25	239 388.0	Contactplaatje	A10		1	
26	237 947.0	Borgmoer	M10	7042	1	
27	238 292.0	Onderlegplaatje	10,5x22x1		3	
28	244 422.0	Zeskantschroef	M12x220	4017	1	
29	235 124.2	Onderlegplaatje	13	125	1	
30	236 172.0	Zeskantmoer	M12	4032	2	
31	924 483.0	Drukveer	5,6x19x42		1	
32	249 161.0	Kogelplaatje	C13	6319	1	
33	249 166.0	Kegelpan	ø14,2	6319	1	
34	973 604.0	Kettingspanner			1	
35	234 295.0	Onderlegplaatje	21x34x2		2	
36	234 234.0	Onderlegplaatje	21x34x1		2	
37	213 878.0	Spanstift	6x32-N	8752	1	
38	973 901.0	Smeerleiding (links)			1	
39	973 618.0	Smeerleiding (rechts)			1	
40	213 611.0	Pijpklem	RSGU 8/15		7	
41	237 464.0	Zeskantschroef	M6x12	4017	5	
42	964 983.1	Draadbus	16x16x30		2	
43	244 948.0	Kegel-smeernippel	CM 8x1	71412	2	
44	973 601.0	Kettingwiel	Z=26-3/4"		2	
45	813 768.0	Rollenketting	12B-1x114 E	8187	1	
46	234 804.0	Gebogen schakel met splitpen	L-12B-1	8187	1	
47	973 611.0	Bevestigingshoekijzer			1	
48	973 900.0	Dekplaat			1	
49	973 612.0	Dekplaat			1	
50	236 200.0	Zeskantschroef	M8x20	4017	14	
51	239 387.0	Contactplaatje	A8		14	

(afb. 1)

**MONTAGE DOSEERWALS VANAF MACHINENR. 614 0 2243 (RECHTE UITVOERING)**

**Boorgaten op afsluitplaat aanbrengen (alleen bij QUANTUM 5500 S / S-18 / S-16 en 4500 S).**

Voor de bevestiging van de aanwezige lagerbeugels (W) en achterste scharnieren van de afschermwanden (96 resp. 97) de volgende doorvoerboorgaten  $\varnothing$  13 mm boren.

- V = 55 mm (afstand van buiten)
- W = 898 mm
- X = 1018 mm
- Y = 1078 mm
- Z = 1198 mm

6

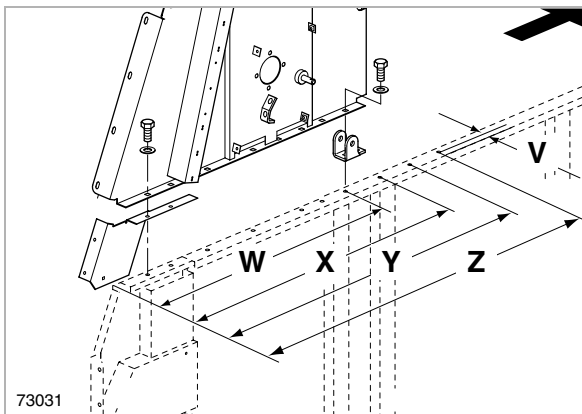
(afb. 3)

**Doseerwals (10) monteren**

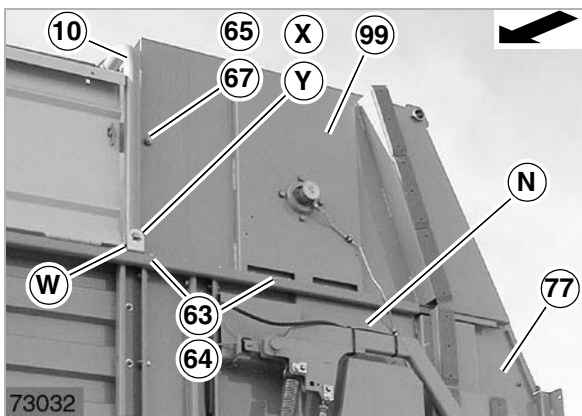
- Voorgemonteerde doseerwals (10) met geschikte hulpmiddelen op de zijwanden (N) links en rechts plaatsen en samen met plaat links (76) en plaat rechts (77) monteren met de zeskantschroeven (63) (telkens 8x) en contactplaatjes (64).
- Alleen bij QUANTUM 5500 S / S-18 / S-16 en 4500 S:  
Lagerbeugels (W) links en rechts met zeskantschroeven (63) (telkens 2x) en contactplaatjes (64) monteren.
- Beugels (101) met de aanwezige bouten (X) en spanstiften (Y) op lagerbeugel (W) links en rechts monteren.
- Beugel (101) met zeskantschroef (65) (telkens 1x) en borgmoer (67) aan de zijwand links (99) en rechts (100) monteren.
- Alleen bij QUANTUM 5500 S / S-18 / S-16 en 4500 S:  
Afschermwanden (102 resp. 103) monteren en aan beugel (101) vergrendelen.
- Alleen bij QUANTUM 6800 S  
Aanwezige afschermwanden omhoogklappen en aan beugel (101) vergrendelen.

8

(afb. 4-5)

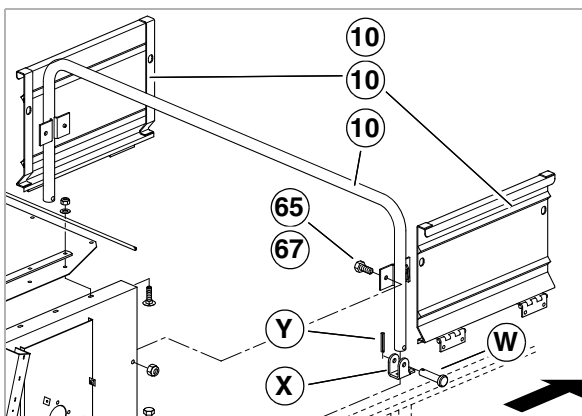


73031



73032

7



8

CLICK HERE TO **DOWNLOAD** THE COMPLETE MANUAL

- Thank you very much for reading the preview of the manual.
- You can download the complete manual from: [www.heydownloads.com](http://www.heydownloads.com) by clicking the link below



- Please note: If there is no response to CLICKING the link, please download this PDF first and then click on it.

CLICK HERE TO **DOWNLOAD** THE COMPLETE MANUAL