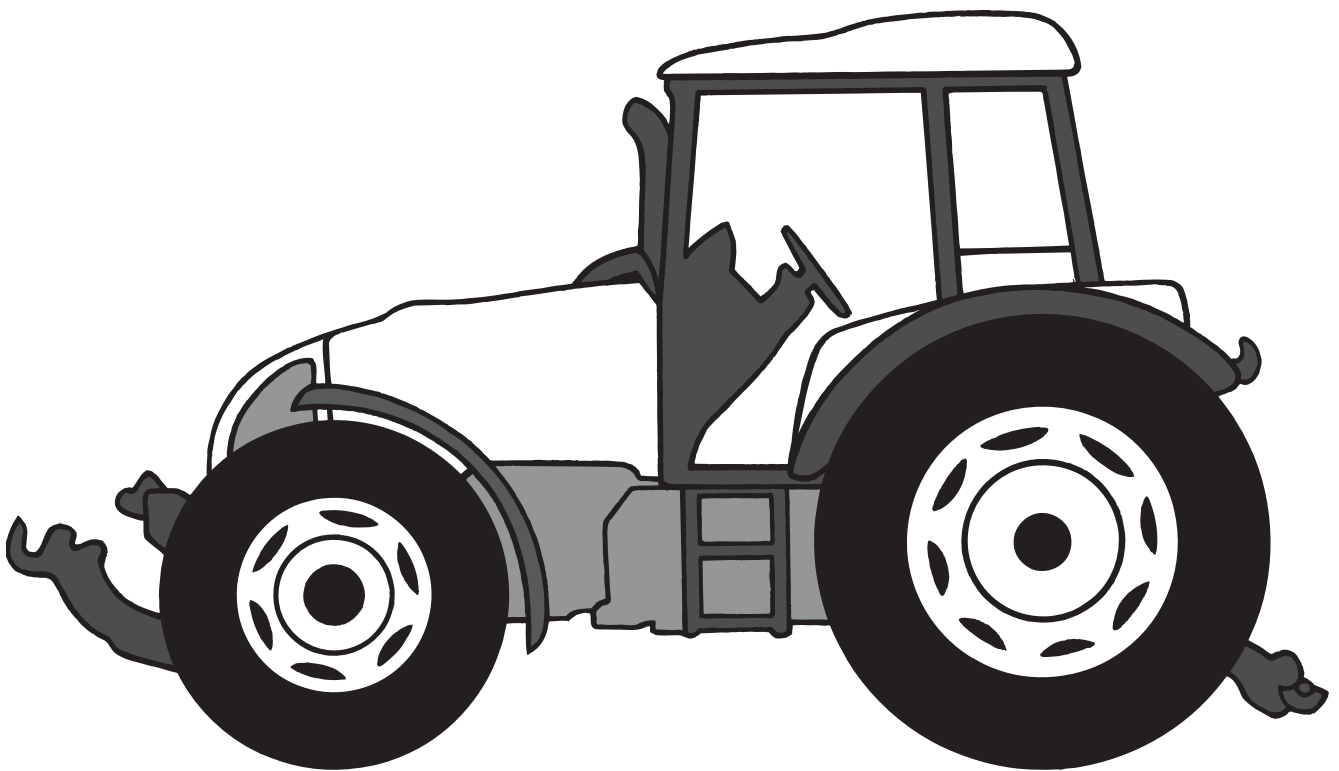


NOTICE DE MONTAGE CLIMATISATION

Ref. : 60 05 029 158

Edition : 11/2003



TRACTEURS CELTIS

sans freinage pneumatique

CLICK HERE TO **DOWNLOAD** THE COMPLETE MANUAL

- Thank you very much for reading the preview of the manual.
- You can download the complete manual from: www.heydownloads.com by clicking the link below



- Please note: If there is no response to CLICKING the link, please download this PDF first and then click on it.

CLICK HERE TO **DOWNLOAD** THE COMPLETE MANUAL

CELTIS RC/RX - Sans freinage pneumatique

MONTAGE CLIMATISATION

2 - Montage dans la cabine

2.1 Face avant cabine

- Desserrer le câble de commande chauffage du robinet.
- Débrancher les tuyauteries de chauffage (vidanger le circuit de refroidissement).
- Retirer l'écope supérieure (**rep. C, fig. 7**).
- Desserrer les dix vis de fixation de bloc chauffage (**rep. D, fig. 7**).

(A effectuer après opération du paragraphe 2.2)

- Retirer l'ensemble du bloc chauffage d'origine.
- Monter en remplacement le bloc chauffage + clim (**rep. 30, fig. 7**) (prendre soin au passage du faisceau dans planche de bord).
- Rebrancher les tuyauteries de chauffage.
- Resserrer le câble de commande chauffage sur le robinet.

2.2 Partie planche de bord

- Déposer la joue gauche de planche de bord.
- Débrancher la connectique et fil de masse de la platine de commande chauffage (voir MR334 page H2.11, dépose du bloc).
- Retirer la platine de commande (chauffage, ventilation) d'origine (repérer le passage du câble de commande chauffage).
- Monter en remplacement la platine de commande (chauffage, ventilation, climatisation) (**rep. 36, fig. 8**) en respectant le passage du câble de commande chauffage.
- Raccorder le faisceau d'adaptation cabine climatisation aux différents organes (platine fusible, platine de cde,...) suivant le schéma, page 10.

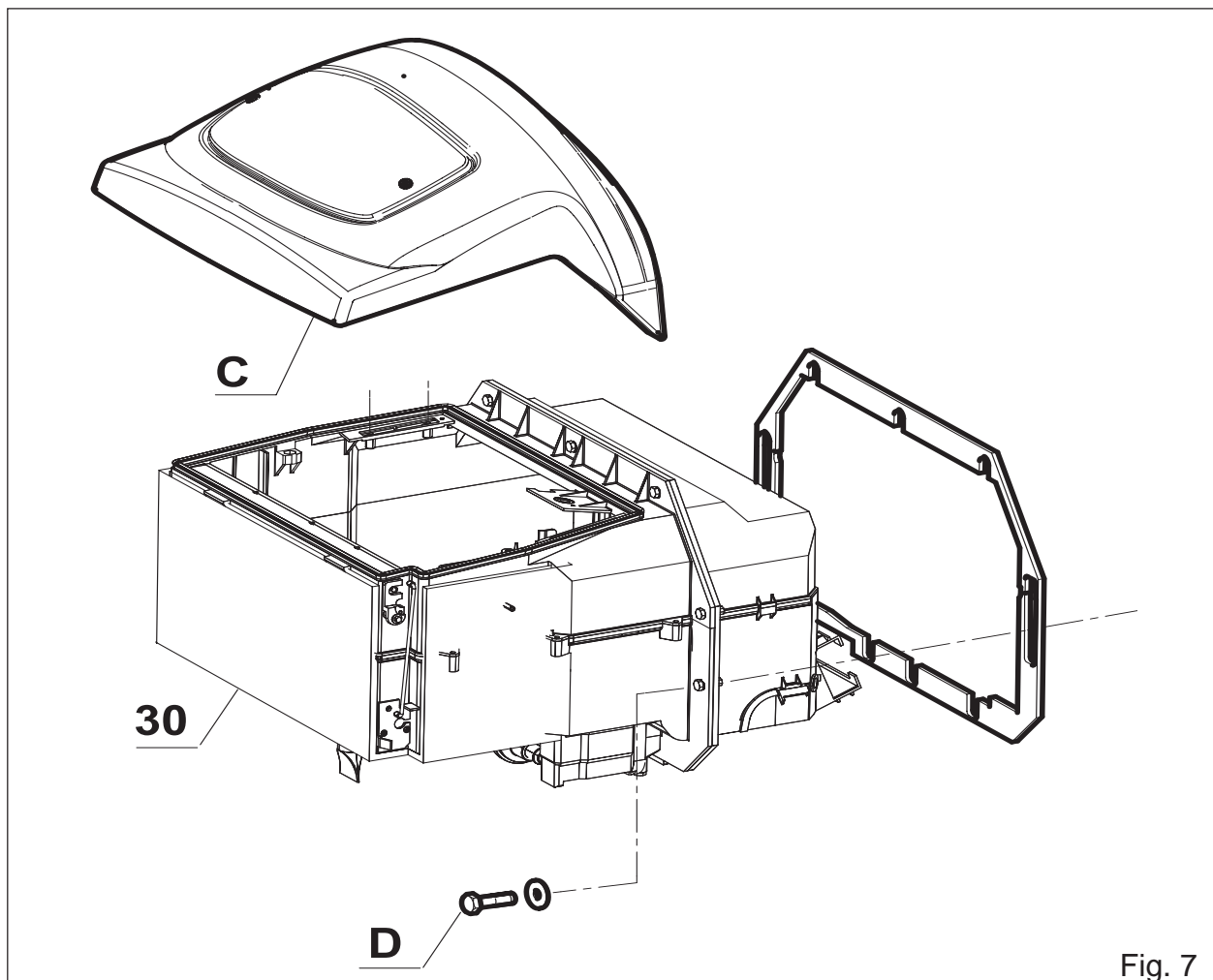


Fig. 7

**CELTIS RC/RX – Ohne Druckluftbremse
EINBAU DER KLIMAANLAGE**

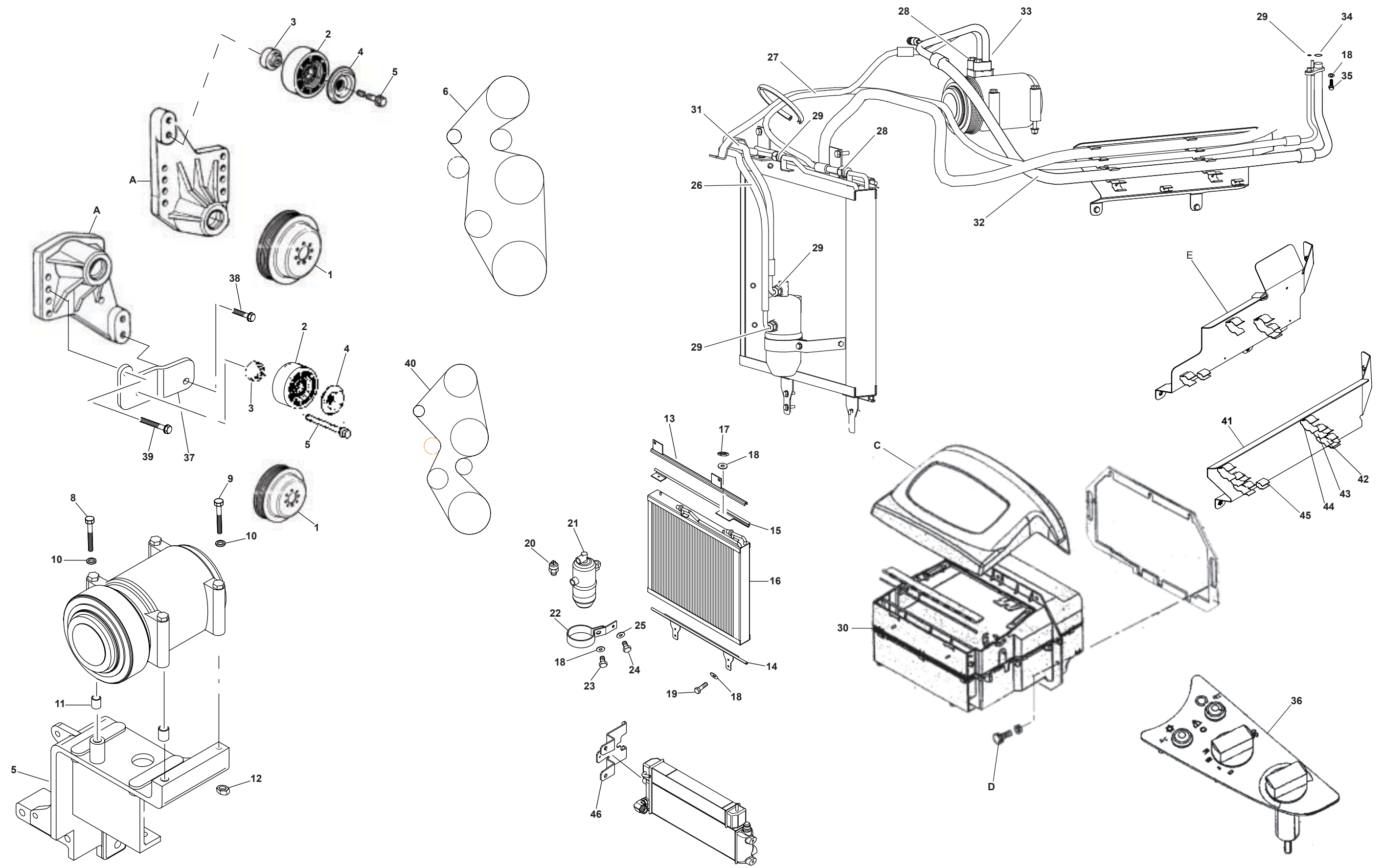


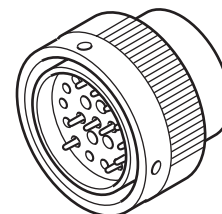
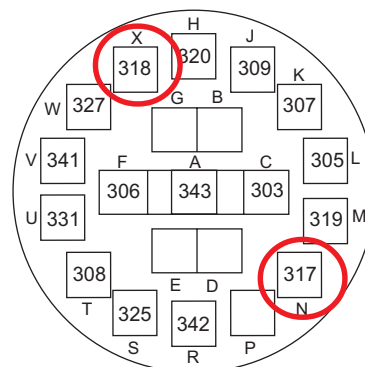


Fig. 1



CELTIS RC/RX – Ohne Druckluftbremse EINBAU DER KLIMAANLAGE

	Ader-Pos.	 2	P02	Hinführend	
A	343*	1	E-Ventil für Druckluftbremse	J38	A
B	---	---	---		
C	303	1	D+ Lichtmaschine	31	
D	---	---	---		
E	---	---	---		
F	306	1	Hupe	J90	4
G	---	---	---		
H	320	1	Scheibenwaschpumpe vorn	J22	3
J	309	1	Lichtmaschine	31	
K	307	1	Motorwassertemperatur	J64	J1
L	305	1	Öldruck	200	
M	319	1	Luffilter	206	
N	317**	1	Druckwächter	210	
P	---	---	---		
R	342	1	Motorkurvenänderung	J64	C1
S	325	1	Scheibenwaschpumpe hinten	J200	3
T	308	1	Alarm Motorwassertemperatur	J64	G2
U	331	1	Cursor Beschleunigungspoti	J64	B3
V	341	1	Motorrechnerstörung	J64	G3
W	327	1	(Ref-) Beschleunigungspoti	E3F	
X	318**	1	Kompressor Klimaanlage	J34	A

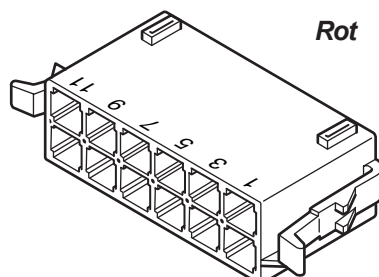


* Version mit Druckluftbremse

** Version mit Klimaanlage

	Ader-Pos.	 2	J08	Hinführend	
1	079	0,6	Relaissteuerung Klimaanlage	J13	1
2	083	0,6	Steuerung Umluft	J14	2
3	084	0,6	+ Umluft	J13	3
4	129*	0,6	+APC Kontakt Auskuppeln	J63	2
5	081	1	Kompressor	J02	X
6	137*	0,6	Steuerung Nichtleergang	J09	B4
7	080	1	Druckwächter	J02	N
8	085	0,6	- Umluft	J07	A5
9	128*	0,6	+APC Kontakt Einkuppeln	J86	2
10	132*	0,6	+APC Poti ISC	J62	8
11	082	0,6	+APC Steuerung Umluft	J14	3
12	133*	0,6	+APC Steuerung Umschalter	J09	B1

* Nur Version ISC



Mechanischer Umschalter + Klimaanlage

11	9	7	5	3	1
082		080	081	084	079
		085			083
12	10	8	6	4	2

Umschalter Unterdrehmoment + Klimaanlage

11	9	7	5	3	1
082	128	080	081	084	079
133	132	085	137	129	083
12	10	8	6	4	2

Umschalter Unterdrehmoment

11	9	7	5	3	1
	128				
133	132		137	129	
12	10	8	6	4	2

CELTIS RC/RX - Without pneumatic braking INSTALLING AIR CONDITIONING



Before starting the installation operations, disconnect the battery.

1 - Operations in engine bay

1.1 Operations on mechanical elements

- Remove all engine cowlings (side panels, top cowling, front cowling).
- Remove upper thermal insulation panel at rear of engine.
- Remove fan belt.
- Remove fan drive pulley.
- Install the new fan drive pulley, dia. 140 mm (1, fig. 1).

For the CELTIS 426, 436 and 446: Fig. 1

- Install the tensioner roller (2, fig. 1) on its mounting (A, fig. 1) and parts (3, 4 and 5, fig. 1).

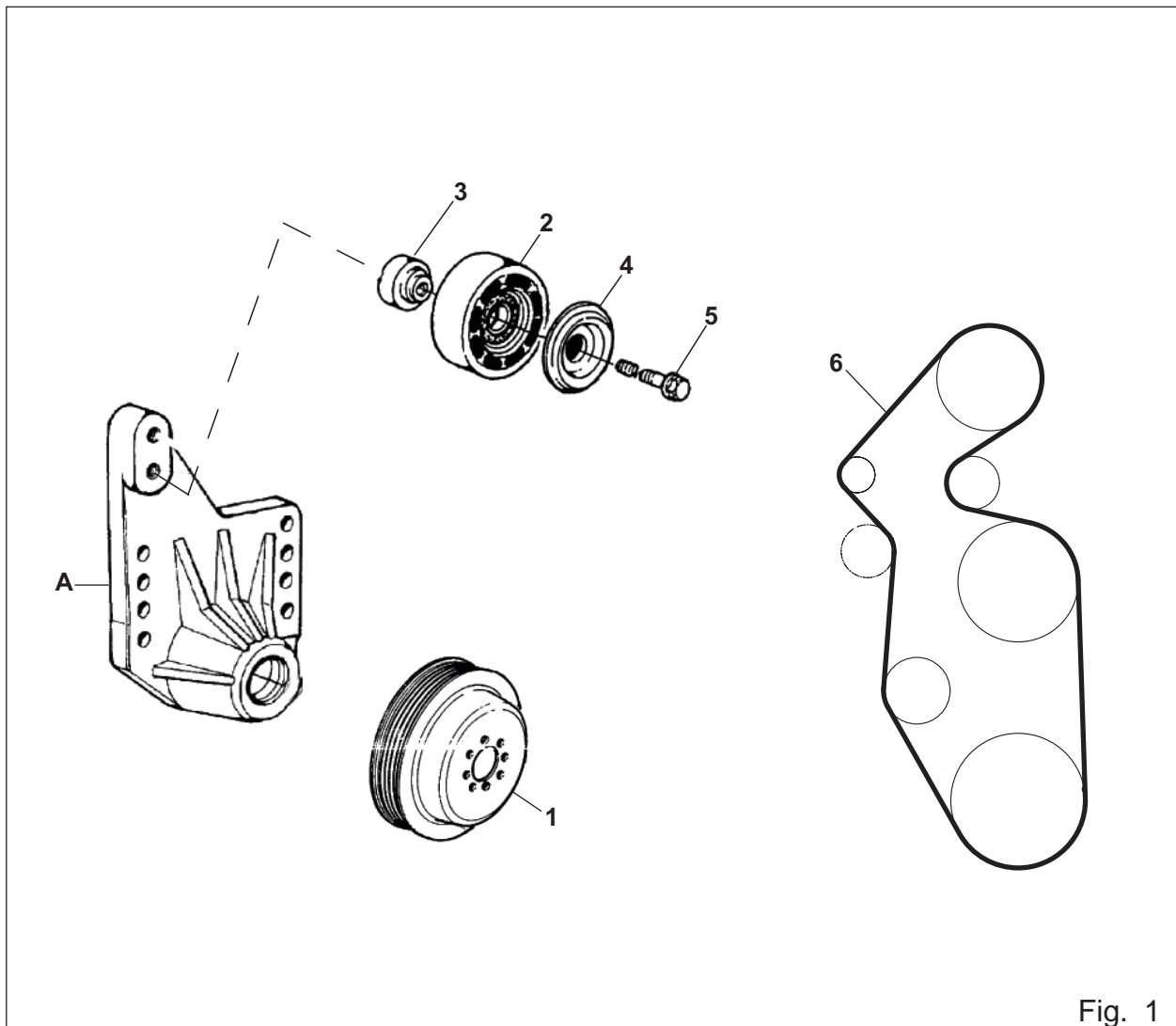


Fig. 1

CLICK HERE TO **DOWNLOAD** THE COMPLETE MANUAL

- Thank you very much for reading the preview of the manual.
- You can download the complete manual from: www.heydownloads.com by clicking the link below

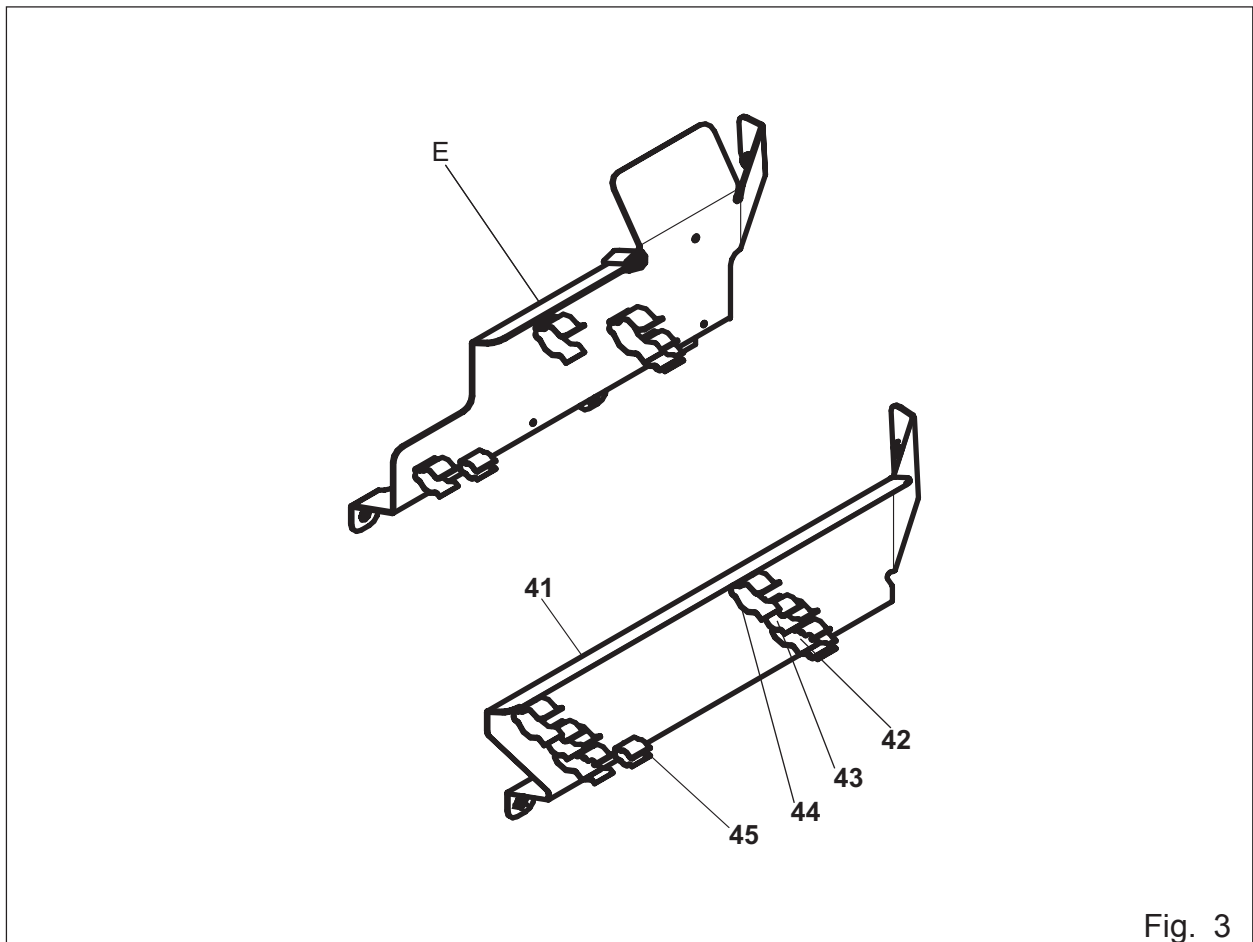


- Please note: If there is no response to CLICKING the link, please download this PDF first and then click on it.

CLICK HERE TO **DOWNLOAD** THE COMPLETE MANUAL

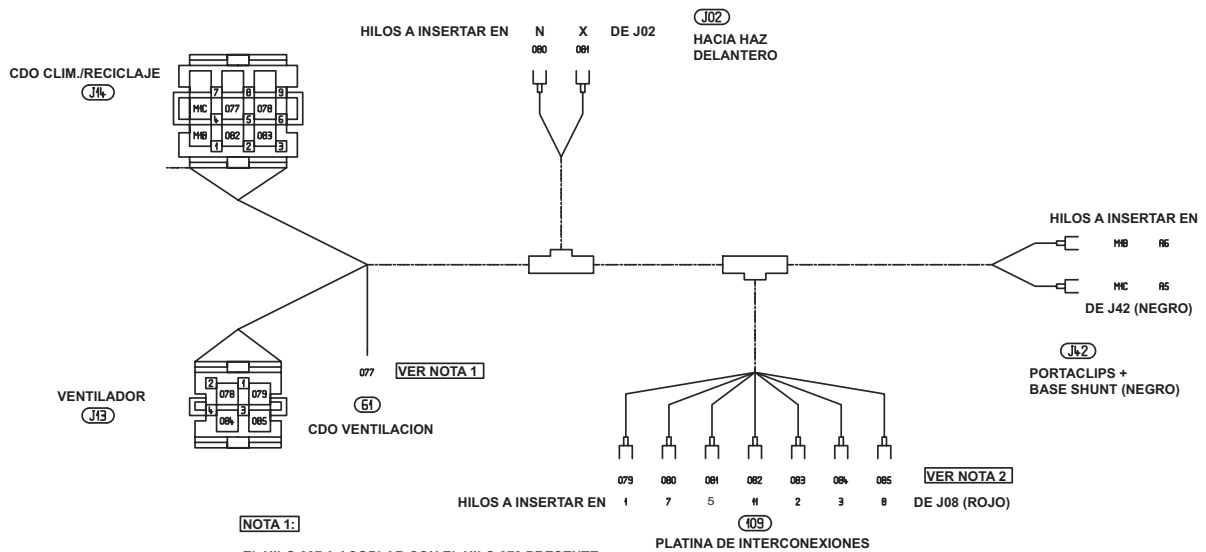
CELTIS RC/RX – Sin frenado neumático MONTAJE CLIMATIZACION

- Retirar el deflector (chapa protectora de tubos) original.
- Montar como reemplazo el protector (ref. 41, fig. 3) fijando en él por medio de remaches (no suministrados) los diferentes collares (ref. 42, 43, 44 y 45, fig.3).



CELTIS RC/RX – Sin frenado neumático

MONTAJE CLIMATIZACION

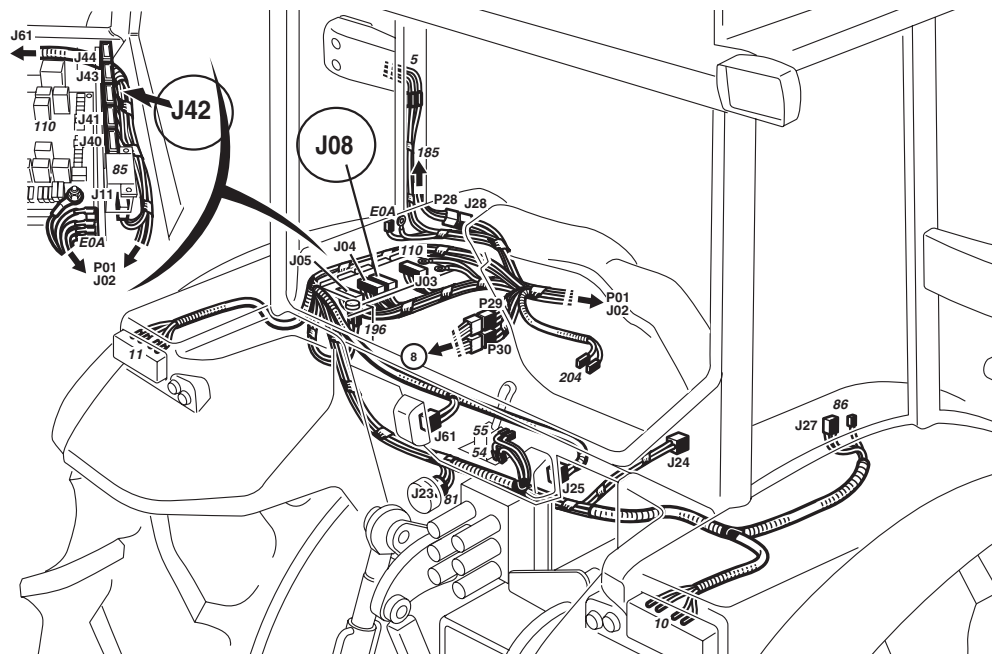


NOTA 1:

EL HILO 007 A ACOPLAR CON EL HILO 073 PRESENTE SOBRE EL HAZ TABLERO DE A BORDO AL NIVEL DEL CDO VENTILACION.
EL CLIP Y EL PROTECTOR DE CLIPS (AMARILLO) SON SUMINISTRADOS EN EL KIT CABLEADO CLIM.

NOTA 2:

EN CASO DE UN TA CON INVERSOR MECANICO SIN CLIMATIZACION, UTILIZAR EL PORTACLIP (ROJO) REF. 7700065101 SUMINISTRADO CON EL KIT CABLEADO.
EN CASO DE UN TA CON INVERSOR ISC, INSERTAR LOS HILOS EN EL PORTACLIPS (ROJO) REF. 7700065101 YA PRESENTE EN EL HAZ PARTE BAJA DE CABINA.



CELTIS RC/RX – Senza frenatura pneumatica

MONTAGGIO CLIMATIZZAZIONE

1.2 Circuito refrigerante

- Sbloccare il raffreddatore d'olio e farlo girare verso l'avanti.
- Fissare la guida di scorrimento (n. 13, fig. 5) e la guida (n. 14, fig. 5) sullo schermo radiatore.
- Fissare la guida (n. 15, fig. 5) sul condensatore.
- Inserire il condensatore (n. 16, fig. 5) tra le guide inf. e sup.
- Montare il pressostato (n. 20, fig. 5) sul serbatoio (n. 21, fig. 5).
- Inserire il serbatoio (n. 21, fig. 5) nel collare (n. 22) e fissare l'insieme sulla cerniera dello schermo radiatore.
- Smontare le staffe di fissaggio del bloccaggio elastomero.
- Montare in sostituzione il supporto (n. 46, fig. 5).
- Collegare i tubi uscita condensatore/entrata serbatoio (n. 26, fig. 6) e uscita compressore/entrata condensatore (n. 27, fig. 6).

Inserire le guarnizioni toriche appropriate (n. 28 e 29, fig. 6).

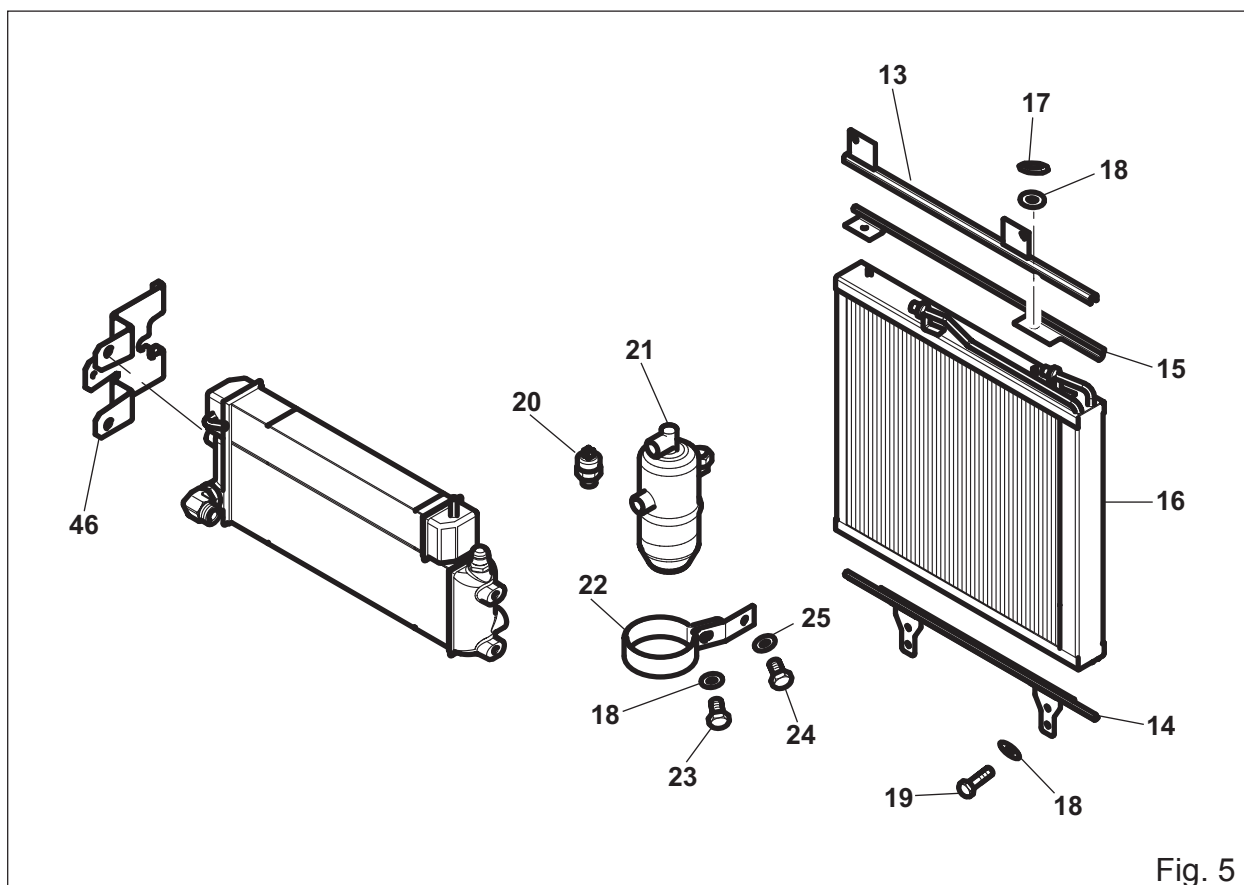
- (Da effettuare dopo le operazioni del paragrafo 2.1)
- Collegare i tubi uscita serbatoio/entrata evaporatore (n. 31, fig. 6) e entrata compressore/uscita evaporatore (n. 32, fig. 6).

Inserire le guarnizioni toriche appropriate (n. 29, 33 e 34, fig. 6).

- Bloccare i tubi su regolatore di pressione mediante la vite (n. 35, fig. 6). Coppia di serraggio 7,5 Nm +/- 0,5.

1.3 Parte elettrica

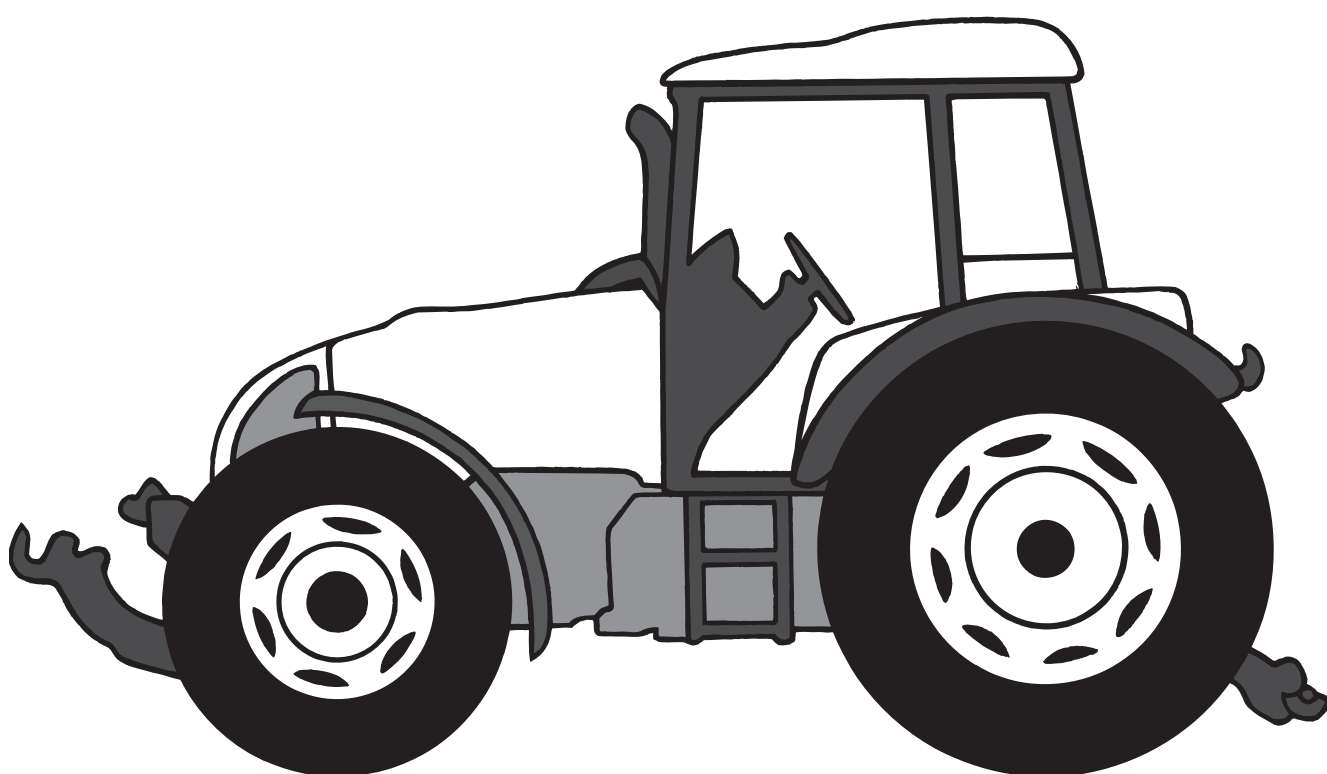
- Collegare il fascio d'adattamento motore ai differenti organi e alla presa J02 secondo lo schema.



HANDLEIDING VOOR DE MONTAGE AIRCONDITIONING

Ref.: 60 05 029 158

Uitgave: 11/2003



CELTIS TREKKERS

zonder luchtdrukrem

CELTIS RC/RX – Zonder luchtdrukrem MONTAGE AIRCONDITIONING

2 - Montage in de cabine

2.1 Voorkant cabine

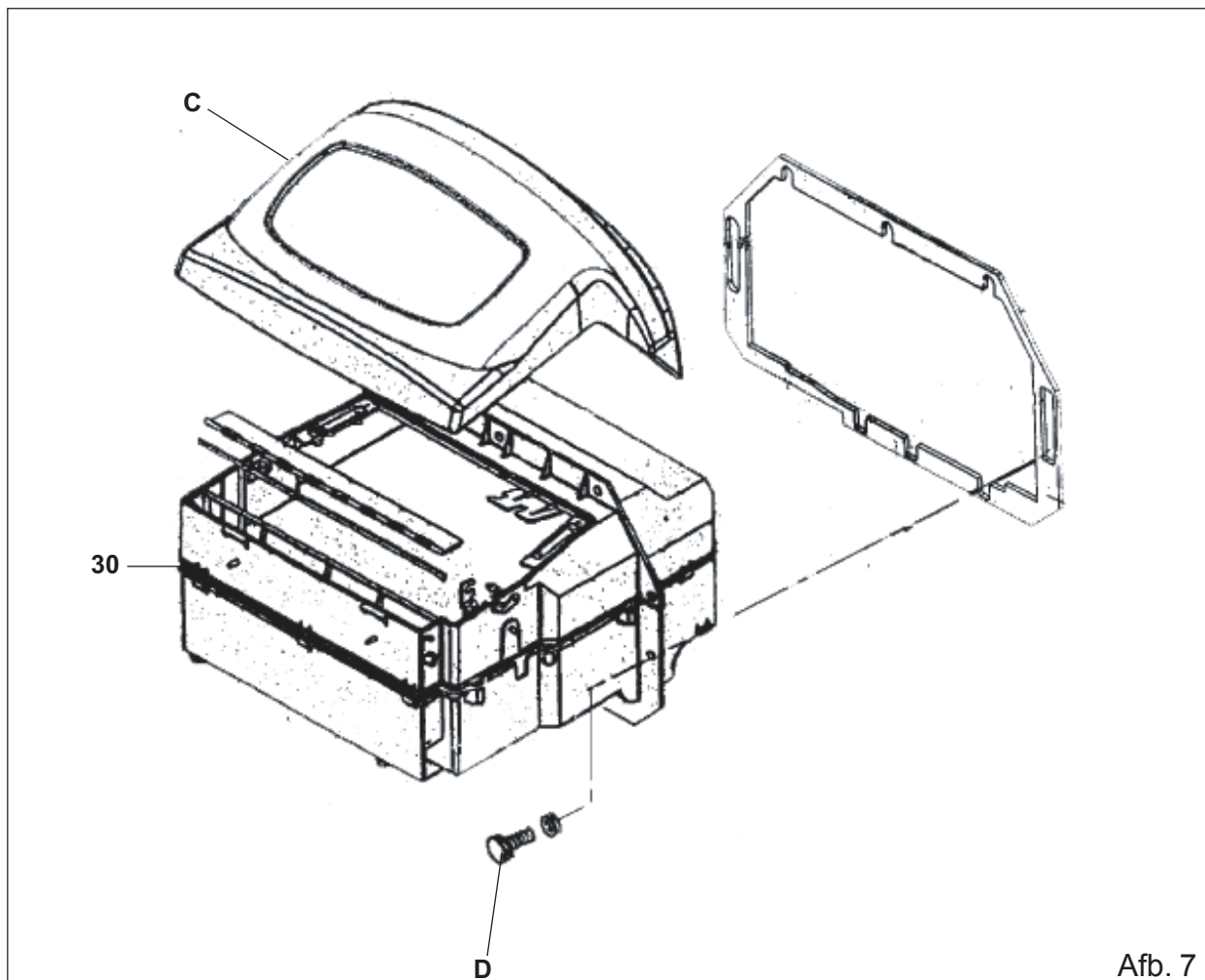
- Draai de bedieningskabel van de verwarming los van de kraan.
- Ontkoppel de verwarmingsleidingen (koelcircuit aftappen).
- Verwijder het bovenste element (**ref. C, afb. 7**).
- Draai de tien bevestigingsschroeven van het verwarmingsblok los (**ref. D, afb. 7**).

(Handeling uit te voeren na die van paragraaf 2.2)

- Verwijder het hele oorspronkelijke verwarmingsblok.
- Monteer ter vervanging het verwarmingsblok + airco (**ref. 30, afb. 7**) (let op de kabeldoorvoer in het instrumentenpaneel).
- Sluit de verwarmingsleidingen weer aan.
- Draai de bedieningskabel van de verwarming weer op de kraan.

2.2 Deel instrumentenpaneel

- Demonteer het linker deel van het instrumentenpaneel.
- Koppel de leidingen en de massadraad los van het bedieningspaneel van de verwarming (zie Reparatiehandleiding MR334 blz. H2.11, uitbouwen van het blok).
- Verwijder het oorspronkelijke bedieningspaneel (verwarming, ventilatie) (merk de kabeldoorvoer van de bedieningskabel verwarming).
- Monteer ter vervanging het bedieningspaneel (verwarming, ventilatie, airco) (**rep. 36, afb. 8**) en let op de kabeldoorvoer van de bedieningskabel verwarming.
- Sluit de adapter-kabelbundel cabine airco aan op de verschillende onderdelen (zekeringenplaat, bedieningspaneel,...) volgens het schema, bladzijde 10.



Afb. 7

CELTIS RC/RX - Sem travagem pneumática
MONTAGEM DO AR CONDICIONADO

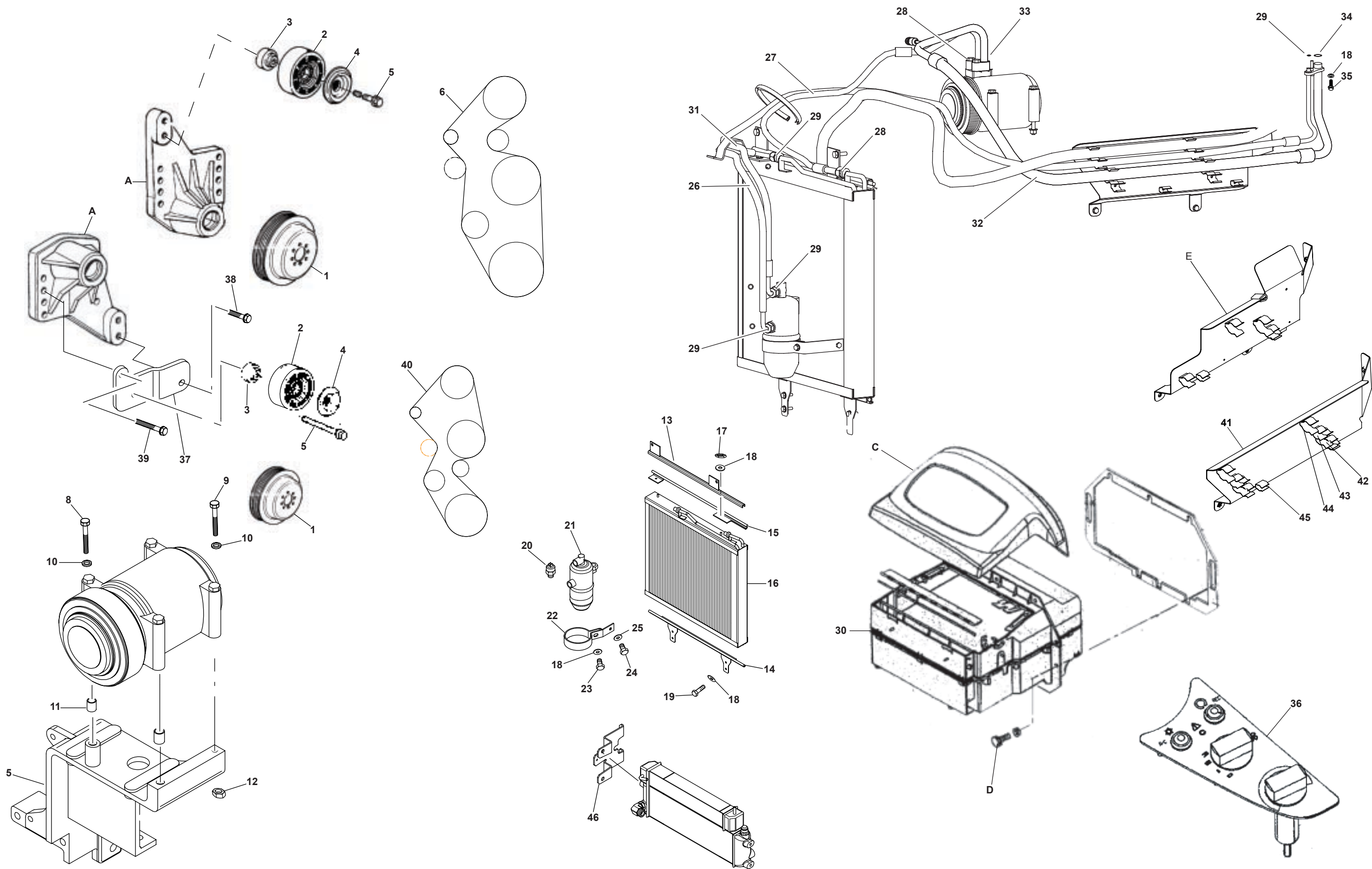


Fig. 1

CLICK HERE TO **DOWNLOAD** THE COMPLETE MANUAL

- Thank you very much for reading the preview of the manual.
- You can download the complete manual from: www.heydownloads.com by clicking the link below



- Please note: If there is no response to CLICKING the link, please download this PDF first and then click on it.

CLICK HERE TO **DOWNLOAD** THE COMPLETE MANUAL