

***FIELD ASSEMBLY  
INSTRUCTION***

**GALEO**

**PC800-8**

**PC850-8**

**HYDRAULIC EXCAVATOR**

MACHINE MODEL	SERIAL NUMBER
PC800-8	50001 and up
PC800SE-8	50001 and up
PC800LC-8	50001 and up
PC850-8	60001 and up
PC850SE-8	60001 and up

**KOMATSU**

CLICK HERE TO **DOWNLOAD** THE COMPLETE MANUAL

- Thank you very much for reading the preview of the manual.
- You can download the complete manual from: [www.heydownloads.com](http://www.heydownloads.com) by clicking the link below



- Please note: If there is no response to CLICKING the link, please download this PDF first and then click on it.

CLICK HERE TO **DOWNLOAD** THE COMPLETE MANUAL

- Work equipment
- (1) Boom

	Model	PC800-8 PC800LC-8	PC800SE-8	PC850-8	PC850SE-8
	A (mm)	8,505	7,405	8,345	7,405
	B (mm)	2,705	2,560	2,695	2,560
	C (mm)	4,387	4,104	4,295	4,104
	D (mm)	1,218	1,098	1,210	1,098
	Overall width (mm)	1,500	1,500	1,500	1,500
	Weight (kg)	7,510	6,950	7,770	6,950

- (2) Arm

	Model	PC800-8 PC800LC-8	PC800SE-8	PC850-8	PC850SE-8
	A (mm)	5,105	4,075	4,800	4,075
	B (mm)	1,324	1,696	1,410	1,696
	C (mm)	2,459	2,237	2,478	2,237
	D (mm)	577	709	648	709
	Overall width (mm)	749	753	749	753
	Weight (kg)	3,970	4,880	4,485	4,880

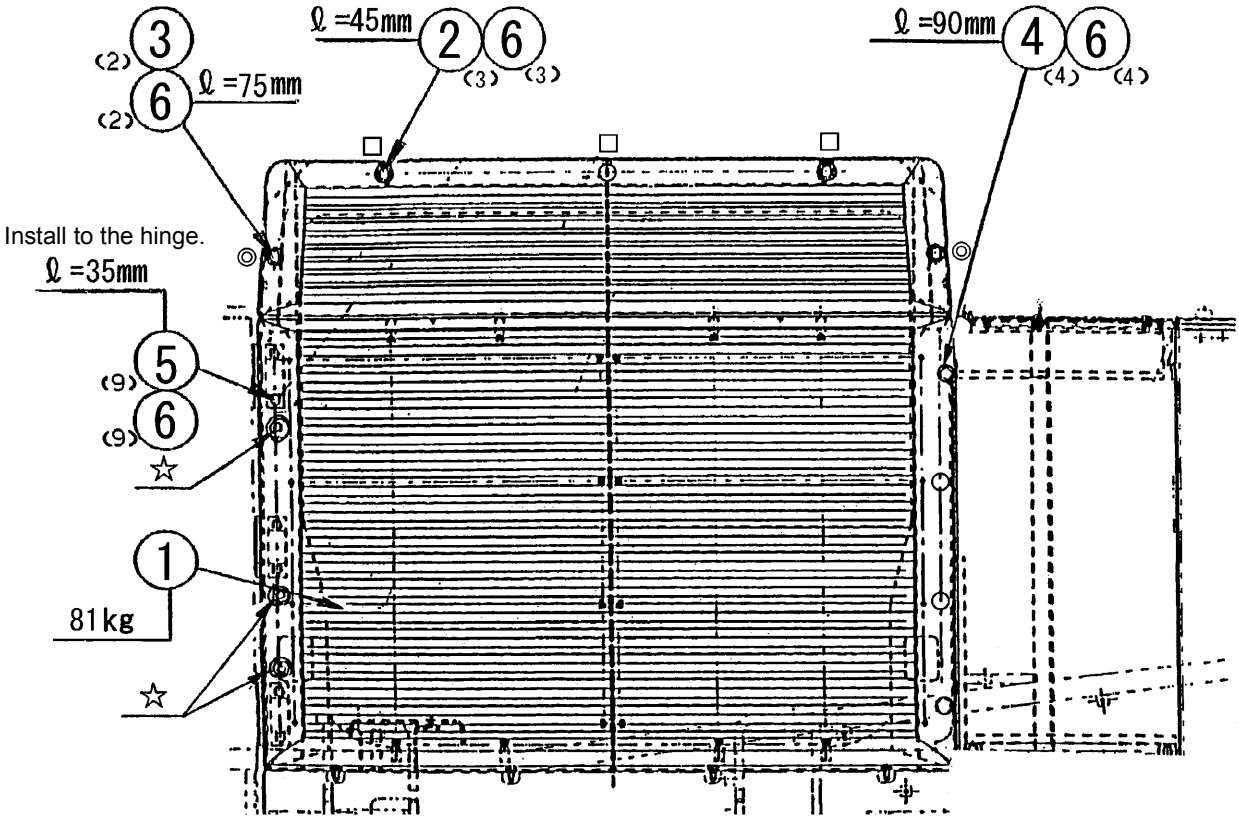
- (3) Bucket

	Model	PC800-8 PC800LC-8	PC800SE-8	PC850-8	PC850SE-8
	A (mm)	2,365	2,200	2,390	2,200
	B (mm)	1,850	1,950	1,880	1,950
	C (mm)	1,052	889	1,118	889
	D (mm)	646	714	599	714
	Overall width (mm)	1,845	2,105	1,870	2,255
	Weight (kg)	2,960	3,420	3,840	4,245

Category	Komatsu code	Part No.	Q'ty	Container	Main applications, features	
Molybdenum disulphide lubricant	LM-G	09940-00051	60 g	Can	<ul style="list-style-type: none"> <li>Used as lubricant for sliding portion (to prevent from squeaking).</li> </ul>	
	LM-P	09940-00040	200 g	Tube	<ul style="list-style-type: none"> <li>Used to prevent seizure or scuffing of the thread when press fitting or shrink fitting.</li> <li>Used as lubricant for linkage, bearings, etc.</li> </ul>	
Grease	G2-LI	SYG2-400LI SYG2-350LI SYG2-400LI-A SYG2-160LI SYGA-160CNLI	Various	Various	<ul style="list-style-type: none"> <li>General purpose type</li> </ul>	
	G2-CA	SYG2-400CA SYG2-350CA SYG2-400CA-A SYG2-160CA SYGA-160CNCA	Various	Various	<ul style="list-style-type: none"> <li>Used for normal temperature, light load bearing at places in contact with water or steam.</li> </ul>	
	Molybdenum disulphide grease LM-G (G2-M)	SYG2-400M SYG2-400M-A SYGA-16CNM	400 g × 10 400 g × 20 16 kg	Bellows type Bellows type Can	<ul style="list-style-type: none"> <li>Used for heavy load portion</li> </ul>	
	Hyper White Grease G2-T G0-T (*) *: For use in cold district	SYG2-400T-A SYG2-16CNT SYG0-400T-A (*) SYG0-16CNT (*)	400 g 16 kg	Bellows type Can	<ul style="list-style-type: none"> <li>Seizure resistance and heat resistance higher than molybdenum disulfide grease</li> <li>Since this grease is white, it does not stand out against machine body.</li> </ul>	
	Biogrease G2B G2-BT (*) *: For high temperature and large load	SYG2-400B SYGA-16CNB SYG2-400BT (*) SYGA-16CNBT (*)	400 g 16 kg	Bellows type Can	<ul style="list-style-type: none"> <li>Since this grease is decomposed by bacteria in short period, it has less effects on microorganisms, animals, and plants.</li> </ul>	
Primer	SUNSTAR PAINT PRIMER 580 SUPER	417-926-3910	20 ml	Glass container	Adhesive for cab glass	<ul style="list-style-type: none"> <li>Used as primer for cab side (Expiration date: 4 months)</li> </ul>
	SUNSTAR GLASS PRIMER 580 SUPER		20 ml	Glass container		<ul style="list-style-type: none"> <li>Used as primer for glass side (Expiration date: 4 months)</li> </ul>
Adhesive	SUNSTAR PENGUINE SEAL 580 SUPER "S" or "W"		320 ml	Polyethylene container		<ul style="list-style-type: none"> <li>"S" is used for high-temperature season (April - October) and "W" for low-temperature season (November - April) as adhesive for glass. (Expiration date: 4 months)</li> </ul>
	Sika Japan, Sikaflex 256HV	20Y-54-39850	310 ml	Polyethylene container		<ul style="list-style-type: none"> <li>Used as adhesive for glass. (Expiration date: 6 months)</li> </ul>
Caulking material	SUNSTAR PENGUINE SEAL No. 2505	417-926-3920	320 ml	Polyethylene container		<ul style="list-style-type: none"> <li>Used to seal joints of glass parts. (Expiration date: 4 months)</li> </ul>
	SEKISUI SILICONE SEALANT	20Y-54-55130	333 ml	Polyethylene container	<ul style="list-style-type: none"> <li>Used to seal front window. (Expiration date: 6 months)</li> </ul>	

Assembly procedure	<b>Installation of Radiator Cover</b>
<b>A-4</b>	

- Set the radiator covers (1) and (2) on the body and fix them using the bolts and the washers (3) – (6).

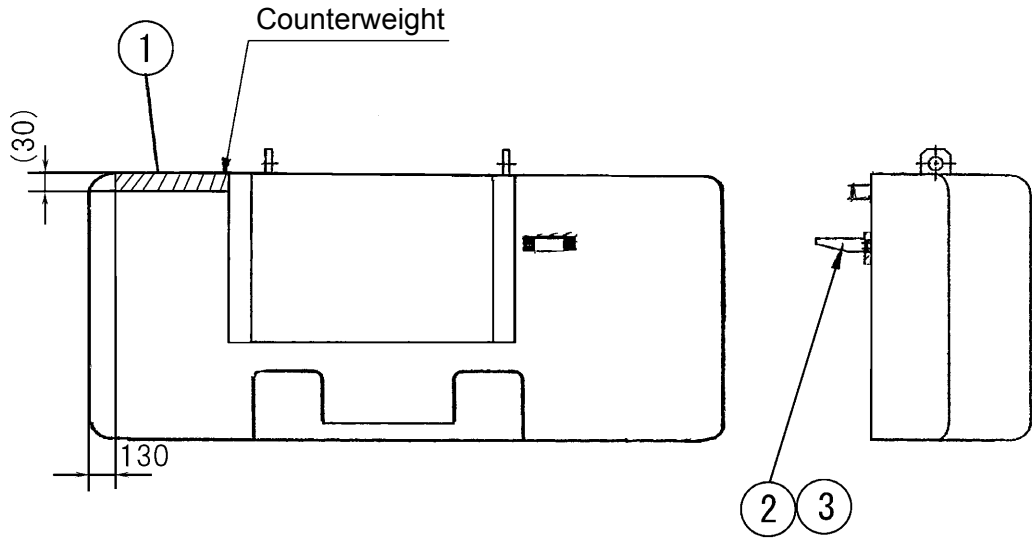


No.	Loose-supply items	Q'ty
1	209-54-41500	1
□	01010-81245	3
⊙	01010-81275	2
4	01010-81290	4
☆	01010-81235	9
6	01643-31232	17

Precautions	Necessary tools		Necessary equipment	
	Name	Q'ty	Name	Q'ty
Remove the plugs for rust prevention set in the mounting tapped holes. Of the 9 hinge mounting bolts, install the 3 bolts with the ☆ mark when the duct is closed and align with the position of the duct.				
Others				

Assembly procedure	<b>Sticking Sheet to Counterweight</b>
<b>A-10</b>	

- Stick sheets to the surfaces of the counterweight in front of the machine as shown below.



★ Note that steps (2) and (3) should be installed after the counterweight is mounted.

No.	Loose-supply items	Q'ty
1	209-46-41230	1
2	209-54-42190	1
3	01024-81220	4

Precautions	Necessary tools		Necessary equipment		
Remove all oil and rust from the surface where the sheet is to be stuck.	Name	Q'ty	Name	Q'ty	
Others					

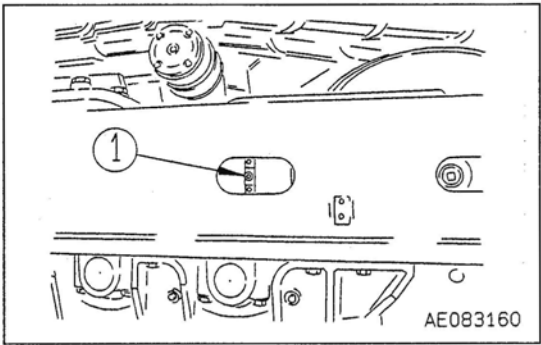
**Increasing Track Shoe Tension**

**⚠ Warning**

It is extremely dangerous to release the grease by any method except the procedure given below.

- ⚠ Warning**
- Don't stand at the front.
  - Don't look inside.


- (1) Loosen plug (1) gradually to release the grease.
- (2) Turn plug (1) a maximum of one turn.
- (3) If the grease does not come out smoothly, move the machine forwards and backwards a short distance.
- (4) Tighten plug (1).
- (5) To check that the tension is correct, move the machine slowly forward.
- (6) Check the track tension again, and if the tension is not correct, adjust it again.



Precautions	Necessary tools		Necessary equipment		
	Name	Q'ty	Name	Q'ty	
	Others				

Assembly procedure	<b>Relieving Remaining Pressure from Hydraulic Circuit</b>
<b>B-4</b>	

When removing hydraulic pipes, be sure to relieve remaining pressure in accordance with the following procedures:

- (1) Remove the cap from the hydraulic oil tank.
  -  When removing the cap from the oil it slowly to relieve pressure in the tank and remove it carefully.
- (2) Lower the lock lever and keep it locked.
- (3) Start the engine, operate it for about 10 seconds and stop the engine.
  - ★ Do not increase the engine speed to over 1,000 rpm.
  - ★ Keep the control lever of the work equipment neutral.
- (4) Turn the starting switch to ON, set the lock lever to “Free” and set the control lever of each work equipment to Full Stroke within 5 to 6 seconds after stopping the engine.
  - ★ Repeat the procedures (2) to (4) three times.
- (5) After relieving remaining pressure, set the cap to the oil filler port of the hydraulic oil tank so that dust do not enter the tank.
- (6) Lower the lock lever and keep it locked.

Precautions	Necessary tools		Necessary equipment	
	Name	Q'ty	Name	Q'ty
	Others			

CLICK HERE TO **DOWNLOAD** THE COMPLETE MANUAL

- Thank you very much for reading the preview of the manual.
- You can download the complete manual from: [www.heydownloads.com](http://www.heydownloads.com) by clicking the link below

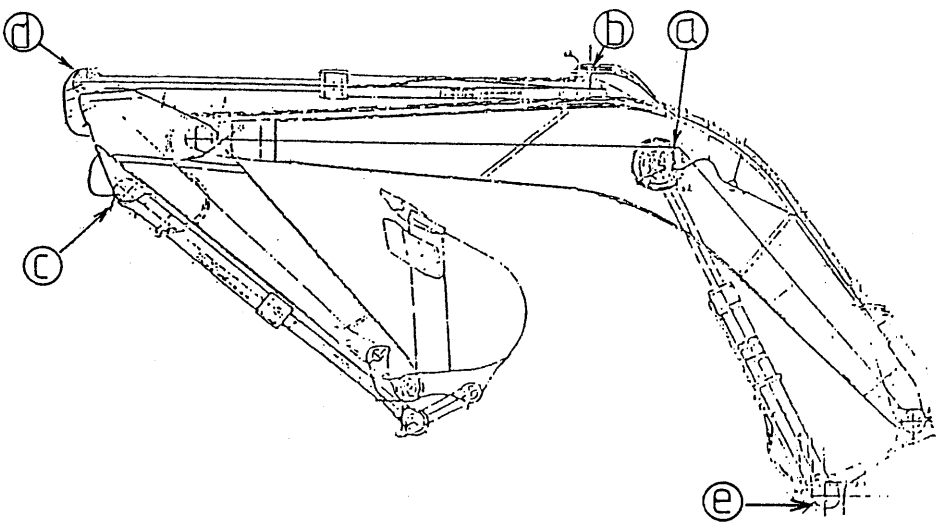


- Please note: If there is no response to CLICKING the link, please download this PDF first and then click on it.

CLICK HERE TO **DOWNLOAD** THE COMPLETE MANUAL

Assembly procedure	<b>Lubrication Piping to Work Equipment</b>
<b>B-13</b>	

- |   |  |
|---|--|
| <p>(1) Remove the oil stopper plugs from the cylinder side and from the hose nipple side, remove the nipple from the hose and set it to the cylinder side, and connect the lubrication hose (2 places) (a) for the boom cylinder.</p> <p>(2) Remove the oil stopper plugs from the cylinder side and from the hose elbow side, remove the elbow from the hose and set it to</p> | <p>the cylinder side, and connect the lubrication hose for the arm cylinder foot (b) (2 places in case of PC850, PC800SE and PC850SE).</p> <p>(3) Remove the oil stopper plugs from the cylinder side and from the hose elbow side, remove the elbow from the hose and set it to the cylinder side, and connect the lubrication hose for the bucket cylinder foot (c).</p> |
|---|--|



- |   |  |
|---|--|
| <p>(4) Remove the oil stopper plugs from the cylinder side and from the hose elbow side, remove the elbow from the hose and set it to the cylinder side, and connect the lubrication hose for the arm cylinder top (d).</p> | <p>(5) Remove the oil stopper plugs from the right and left cylinder sides and set the grease nipple (07020-00000, 2 pcs.) for the boom cylinder foot (e) to the both cylinders.</p> |
|---|--|

No.	Loose-supply items	Q'ty
	07020-00000	2

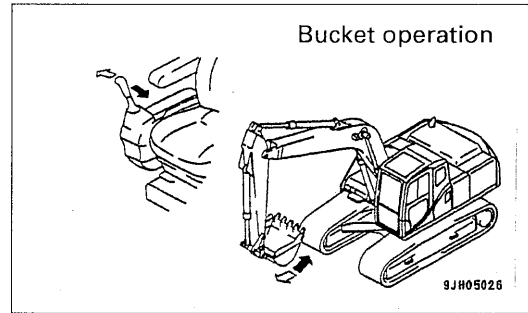
Precautions	Necessary tools		Necessary equipment	
	Name	Q'ty	Name	Q'ty
Others				

## Flushing of Hydraulic Circuit (1/2)

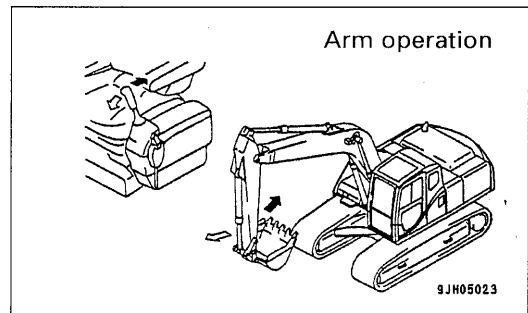
After completion of assembling, flush the hydraulic circuit as follows:

- ★ Rotate the engine at the low idle (in the E mode) with the lever in the neutral position for 15 minutes, and follow the procedures below.
- (1) Flushing of Work Equipment Pipes  
Extend and contract each cylinder for several minutes with reaching them to the stroke end.

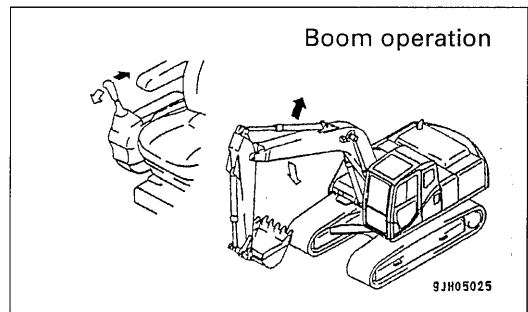
a) Extension and contraction of bucket cylinder for 5 minutes



(b) Extension and contraction of arm cylinder for 5 minutes.

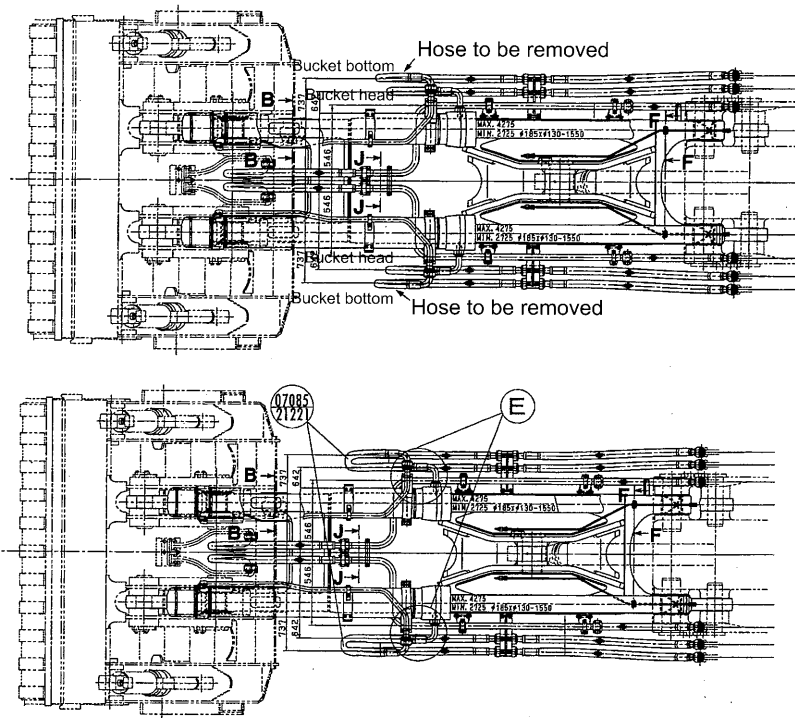


(c) Extension and contraction of boom cylinder for 5 minutes

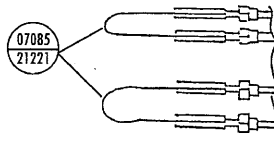


Precautions	Necessary tools		Necessary equipment		
Full operation may damage the element since the relief valve of the filter is closed.	Name	Q'ty	Name	Q'ty	
	Others				

## C- 6 Installation of flushing piping for bucket cylinder



- (1) Remove the bucket cylinder bottom hoses (2 pieces on both outsides of the work equipment).
- (2) Install the cylinder hoses (07085-21221) to part ⑤ to short the bucket cylinder circuit as shown below.

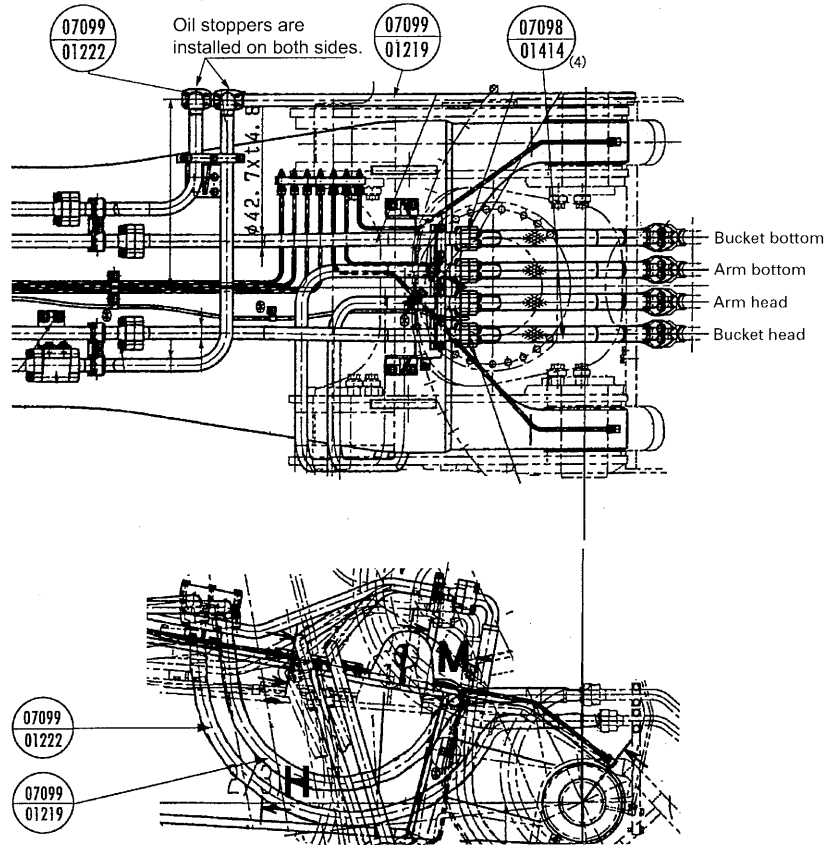


(Reuse the removed split flanges, bolts, and O-rings.)

Precautions	Part sent individually		
	No.	Part No.	Q'ty
	1	07085-21221	4

## C-15 Installation of connecting hoses between chassis and boom top

- (1) Remove the tube plugs on the boom side.
- (2) Hoses for boom, arm cylinder, and bucket cylinder  
(07098-01414, 4 pieces)  
Hoses for bottom dump cylinder  
(07099-01219, 07099-01222, 2 pieces)



### Precautions

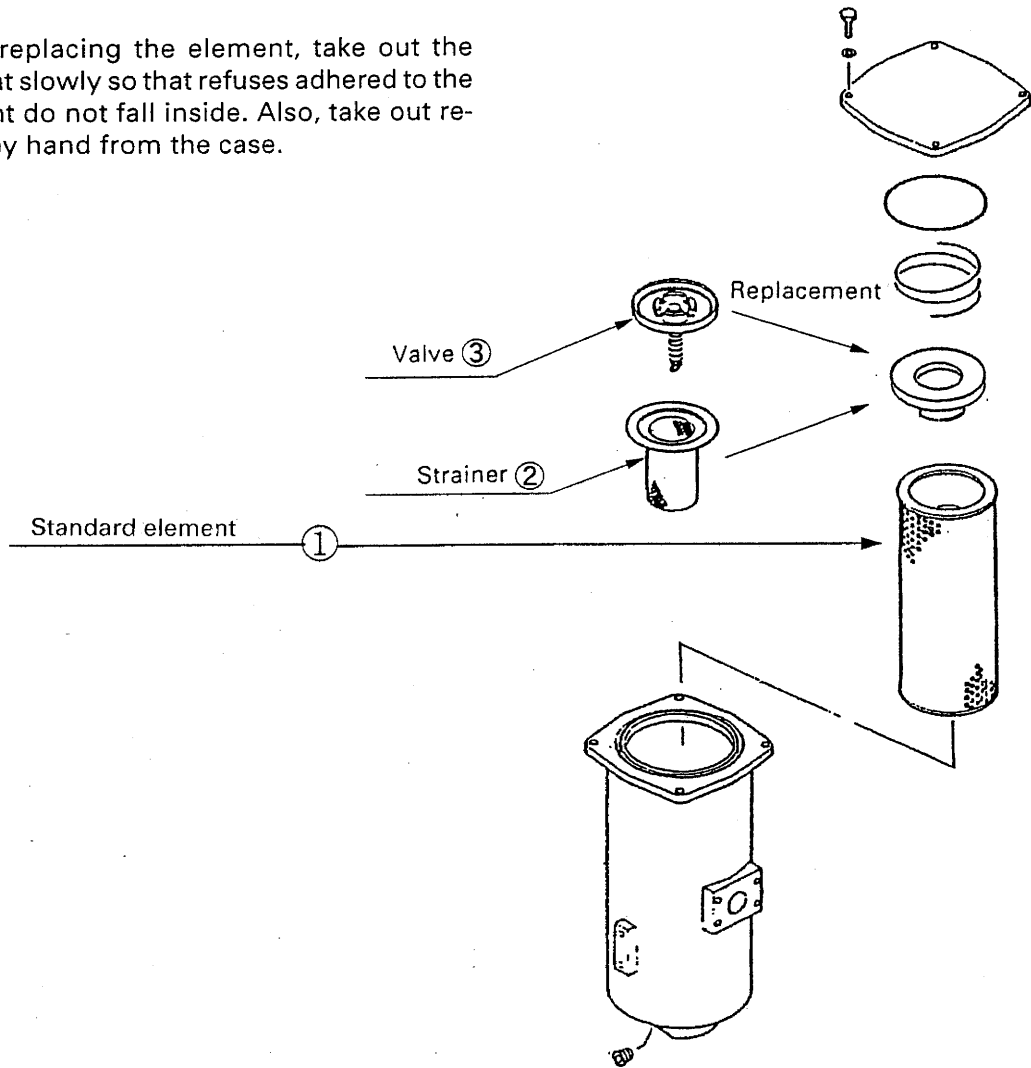
### Part sent individually

No.	Part No.	Q' ty
3	07099-01222	1
2	07099-01219	1
1	07098-01414	4

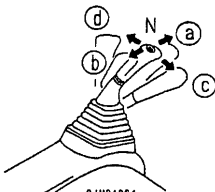
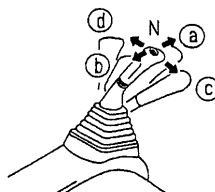
## Replacement of Return Filter (Flushing Filter to Standard Filter) (2/3)

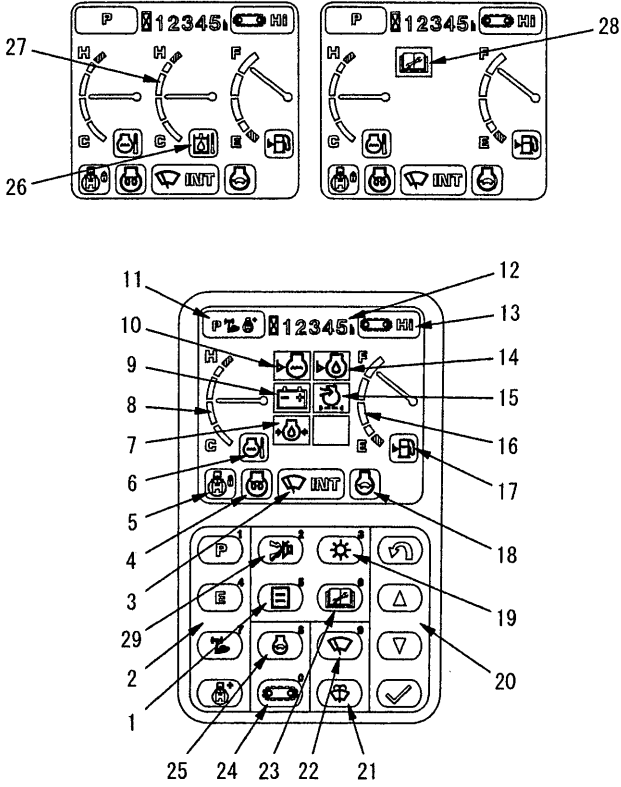
Reinstall the removed return filter element ①, strainer ② and valve ③.

★ When replacing the element, take out the element slowly so that refuses adhered to the element do not fall inside. Also, take out refuses by hand from the case.



Precautions	Necessary tools		Necessary equipment	
	Name	Q'ty	Name	Q'ty
Store the removed standard element (07063-01210) 2 pcs., strainer (206-60-41220) 2 pcs. and valve (12R-60-11300) 2 pcs. in order because they are used again after flushing.				
Others				

Category	Revision	Check item	Local assembly time	After hours of operation	Judgement standard						
Check of switches, control levers		Operation of room lamp switch			ON position: Room lamp lights up OFF position: Room lamp lights off  Even if the starting switch key is at the OFF position, the room lamp will light up when the switch is pressed.						
		Operation of emergency pump drive switch  When the monitor display shows E02 (TVC valve system error), move the switch "up" to make it possible to carry out work			When normal: Switch is pushed down:  When switch is pushed up, alarm buzzer sounds.						
		Operation of swing holding brake release switch  When the monitor display shows E03 (Swing brake system error), move the switch "up" to cancel the brake, and it becomes possible to actuate the swing. However, the swing brake remains released.			When normal: Switch is pushed down  When switch is pushed up, alarm buzzer sounds, and swing lock symbol flashes						
		Operation of alarm buzzer stop switch			This is used to stop alarm buzzer if it sounds to warn of an abnormality of warning item during engine operation.						
		Operation of lower wiper switch (if equipped)			ON: Lower wiper moves. OFF: Lower wiper stops.						
		Operation of travel levers			FORWARD: The lever is pushed forward. (The pedal is angled forward) REVERSE: The lever is pulled back. (The pedal is angled back) N (Neutral): The machine stops						
		Operation of LH work equipment control lever (with auto-deceleration device)			This lever is used to operate the arm and upper structure.  <table border="0" style="display: inline-table; vertical-align: top;"> <tr> <td style="padding-right: 20px;">Arm operation</td> <td>Swing operation</td> </tr> <tr> <td>(a) Arm OUT</td> <td>(c) Swing to right</td> </tr> <tr> <td>(b) Arm IN</td> <td>(d) Swing to left</td> </tr> </table>  N (Neutral): When the lever in this position, the upper structure and the arm will be retained in the position in which they stop.	Arm operation	Swing operation	(a) Arm OUT	(c) Swing to right	(b) Arm IN	(d) Swing to left
	Arm operation	Swing operation									
(a) Arm OUT	(c) Swing to right										
(b) Arm IN	(d) Swing to left										
	Operation of RH work equipment control lever (with auto-deceleration device)			This lever is used to operate the boom and bucket.  <table border="0" style="display: inline-table; vertical-align: top;"> <tr> <td style="padding-right: 20px;">Boom operation</td> <td>Bucket operation</td> </tr> <tr> <td>(a) RAISE</td> <td>(c) DUMP</td> </tr> <tr> <td>(b) LOWER</td> <td>(d) CURL</td> </tr> </table>  N (Neutral): When the lever in this position, the upper structure and the arm will be retained in the position in which they stop.	Boom operation	Bucket operation	(a) RAISE	(c) DUMP	(b) LOWER	(d) CURL	
Boom operation	Bucket operation										
(a) RAISE	(c) DUMP										
(b) LOWER	(d) CURL										
	Confirmation of failure history (Both electrical and mechanical)			Delete the failure history after confirming that no abnormality sign is displayed. Confirm that no failure history is provided after completion of the test.							

Category	Revision	Check item	Local assembly time	After hours of operation	Judgement standard
Check monitor		<b>Monitor display</b> 1. Check of monitor function When the starting switch is turned ON, the gauges, CHECK items, and all display items on the monitor should light up. At the same time the alarm buzzer should sound.			Display should be as on left.
		2. Check of gauges and CHECK items When starting switch is turned to ON (all lamps on), all display lamps should go out after approx. 3 sec. For another 2 seconds, only the gauges are displayed, and the CHECK and monitor items disappear.			
		3. Check of monitor items After starting the engine, the caution lamps should not light up and the alarm buzzer should not sound when the engine speed is low idling – high idling.			
		<b>Operation of service meter</b>			There should be no scratches or misting of the lens or variation in operation.
<b>MONITOR</b>					
					
<ol style="list-style-type: none"> <li>1. User mode adjustment switch</li> <li>2. Working mode select switch</li> <li>3. Wiper monitor</li> <li>4. Preheating monitor</li> <li>5. Swing lock monitor</li> <li>6. Coolant temperature monitor</li> <li>7. Engine oil pressure monitor</li> <li>8. Coolant temperature gauge</li> <li>9. Battery charge monitor</li> <li>10. Coolant level monitor</li> <li>11. Working mode monitor</li> <li>12. Service meter</li> <li>13. Travel speed monitor</li> <li>14. Engine oil level monitor</li> <li>15. Air cleaner clogging monitor</li> <li>16. Fuel gauge</li> <li>17. Fuel level monitor</li> <li>18. Auto-deceleration monitor</li> <li>19. Screen adjust switch</li> <li>20. Input control switch</li> <li>21. Window washer switch</li> <li>22. Wiper switch</li> <li>23. Maintenance switch</li> <li>24. Travel speed selector switch</li> <li>25. Auto-deceleration switch</li> <li>26. Hydraulic oil temperature monitor</li> <li>27. Hydraulic oil temperature gauge</li> <li>28. Maintenance interval monitor</li> <li>29. Alarm buzzer stop switch</li> </ol>					

CLICK HERE TO **DOWNLOAD** THE COMPLETE MANUAL

- Thank you very much for reading the preview of the manual.
- You can download the complete manual from: [www.heydownloads.com](http://www.heydownloads.com) by clicking the link below



- Please note: If there is no response to CLICKING the link, please download this PDF first and then click on it.

CLICK HERE TO **DOWNLOAD** THE COMPLETE MANUAL