

Field Assembly Instruction

HYDRAULIC
EXCAVATOR

PC2000-11R

SERIAL NUMBERS 30019 and up

KOMATSU

CLICK HERE TO **DOWNLOAD** THE COMPLETE MANUAL

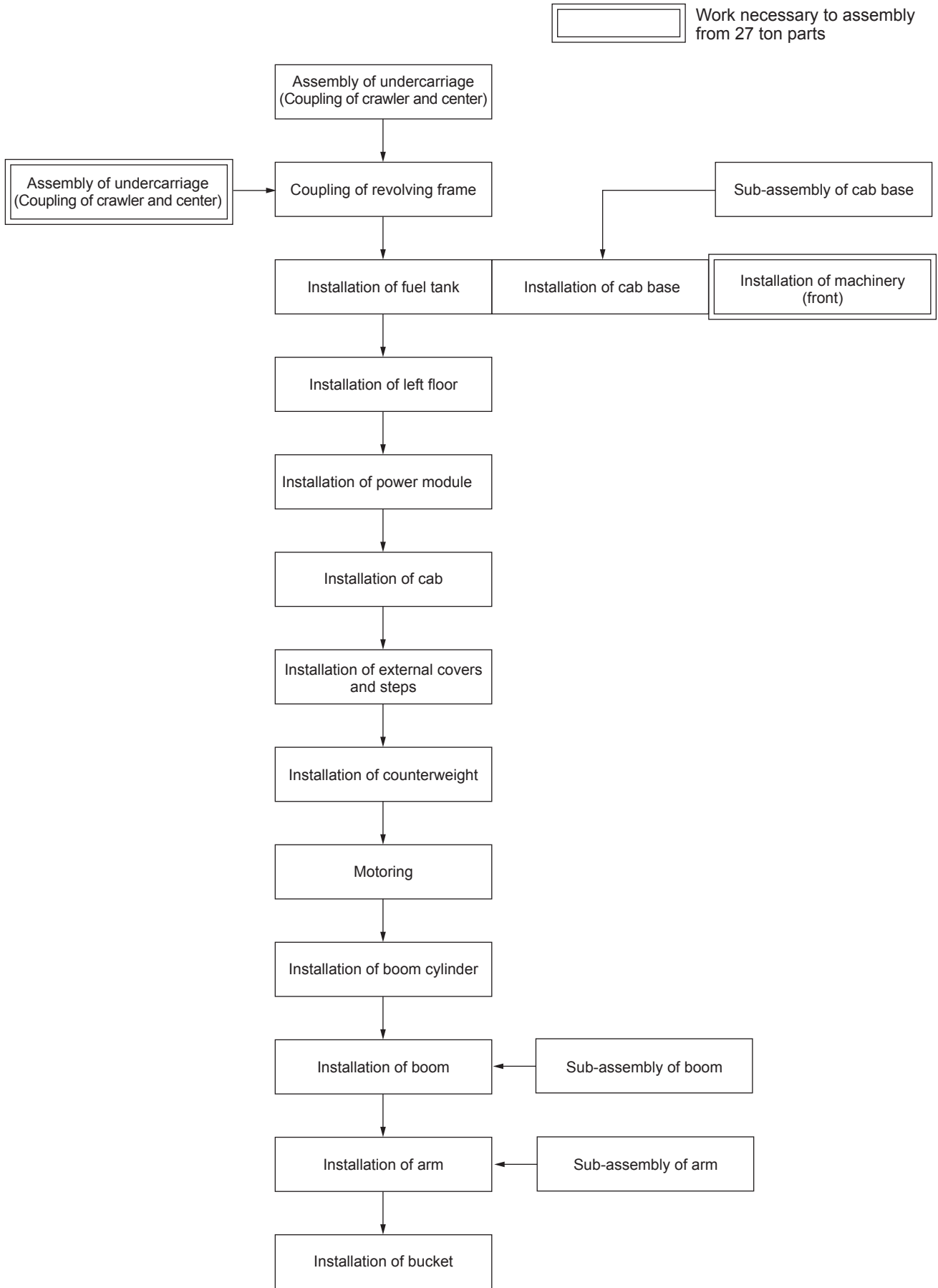
- Thank you very much for reading the preview of the manual.
- You can download the complete manual from: www.heydownloads.com by clicking the link below



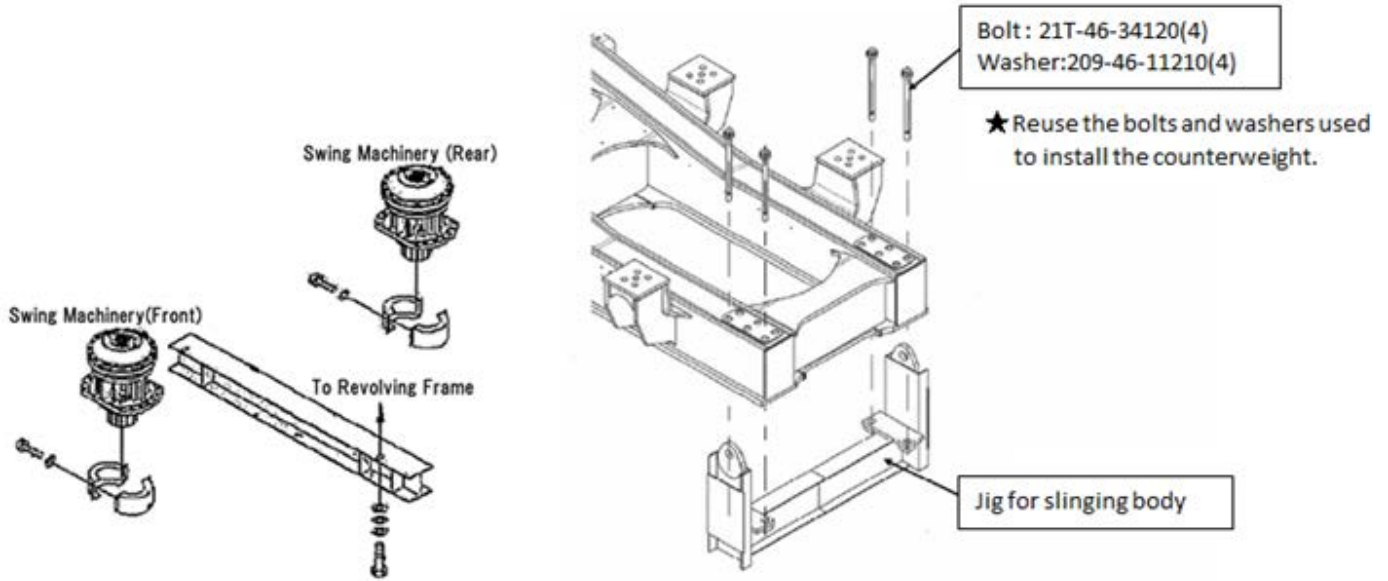
- Please note: If there is no response to CLICKING the link, please download this PDF first and then click on it.

CLICK HERE TO **DOWNLOAD** THE COMPLETE MANUAL

FLOWCHART OF MAIN ASSEMBLY PROCEDURE



• Method of installing chassis hanging jig



LIST OF PARTS SENT INDIVIDUALLY (operator's cab)

E

No.	Part No.	Part Name	Q'ty	Assembly Procedure No.	Remarks
E-1	21T-54-34151-XC	COVER	1	A-32	
E-2	01034-81225	BOLT	6	A-32	
E-3	21T-54-37980	BRACKET	6	A-32	
E-4	21T-54-36680	PLATE	9	A-32	
E-5	21T-54-36690	PLATE	12	A-32	
E-6	01024-81030	BOLT	12	A-32	
E-7	21T-54-37990	CUSHION	6	A-32	
E-8	21T-54-35312 -NK	BRACKET	8	A-32	
E-9	8230-46-1130	BOLT	16	A-32	
E-10	01643-32060	WASHER	16	A-32	
E-11	21T-54-36661	PLATE	16	A-32	
E-12	21T-54-36671	PLATE	8	A-32	
E-13	21T-54-35321	CUSHION	8	A-32	
E-14	21T-54-35732	PIN	4	A-32	
E-15	04020-00514	COTTER PIN	8	A-32	
E-16	01050-52040	BOLT	4	A-32	
E-17	01643-32060	WASHER	4	A-32	
E-18	8295-06-1480	LAMP	1	A-33	
E-19	21T-06-17430-XC	BRACKET	1	A-33	
E-20	01024-81225	BOLT	2	A-33	
E-21	8295-06-1480	LAMP	1	A-33	
E-22	21T-06-33610-XC	PLATE	1	A-33	
E-23	21T-06-17430-XC	BRACKET	1	A-33	
E-24	01024-81225	BOLT	2	A-33	
E-25	04434-51012	CLIP	1	A-33	
E-26	01024-81220	BOLT	1	A-33	
E-27	01024-81020	BOLT	1	A-35	
E-28	207-62-62770-NK	BRACKET	1	A-35	
E-29	01024-81225	BOLT	2	A-35	
E-30	04434-53212	CLIP	1	A-35	
E-31	01024-81225	BOLT	2	A-35	

LIST OF PARTS SENT INDIVIDUALLY (Coupling of Bucket)

J

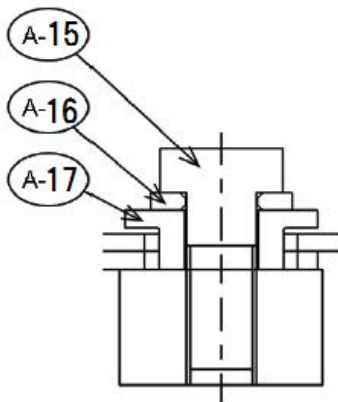
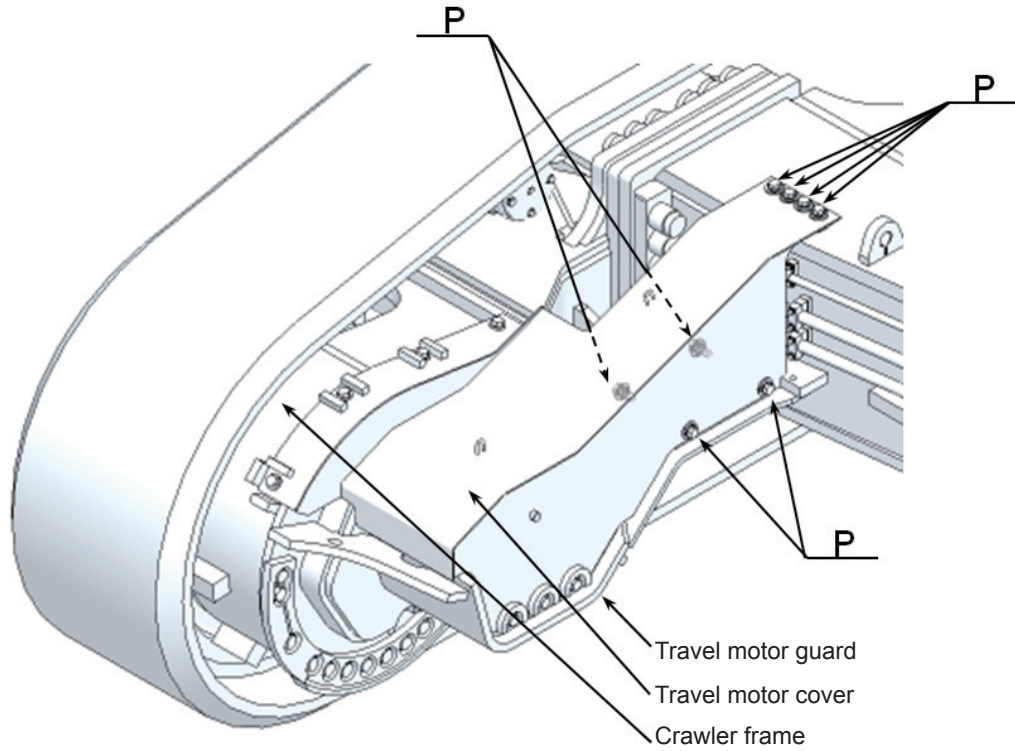
No.	Part No.	Part Name	Q'ty	Assembly Procedure No.	Remarks
J-1	209-72-11261	SEAL	4	C-12	
J-2	209-70-71370	O-RING	4	C-12	
J-3	205-09-61240	BOLT	4	C-12	
J-4	01640-20610	WASHER	8	C-12	
J-5	01596-00606	NUT	4	C-12	
J-6	8247-62-1810	SWIVEL	2	C-12	
J-7	07000-12011	O-RING	2	C-12	
J-8	21T-70-34333-NK	COVER	2	C-12	
J-9	07000-15195	O-RING	2	C-12	
J-10	01010-83695	BOLT	12	C-12	
J-11	01643-33690	WASHER	12	C-12	
J-12	21T-70-33171	PIN	2	C-12	
J-13	21T-70-34341-NK	COVER	2	C-12	
J-14	07000-15175	O-RING	2	C-12	
J-15	01010-83685	BOLT	12	C-12	
J-16	01643-33690	WASHER	12	C-12	
J-18	21T-70-33250-NK	PIN	2	C-13	
J-19	21T-72-73170-NK	STOPPER	2	C-13	
J-20	01010-81645	BOLT	6	C-13	
J-21	01643-31645	WASHER	6	C-13	
J-22	21N-72-11230	SHIM	2	C-13	

COATING MATERIALS LIST

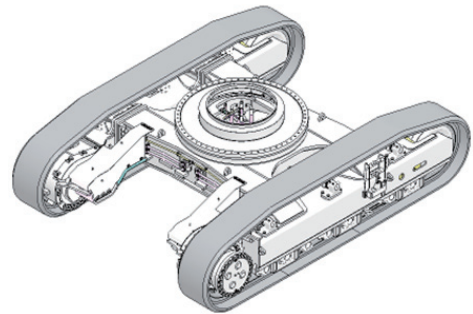
- ★ The coating materials such as adhesives, gasket sealants, and greases used for disassembly and assembly are listed below.
- ★ For coating materials not listed below, use the equivalent of products shown in this list.

Category	Komatsu code	Part No.	Q'ty	Container	Main features and applications
Adhesive	LT-1A	790-129-9030	150 g	Tube	<ul style="list-style-type: none"> • Used to prevent rubber gaskets, rubber cushions, and cock plugs from coming out.
	LT-1B	790-129-9050	20 g (2 pcs.)	Polyethylene container	<ul style="list-style-type: none"> • Used for plastic (except polyethylene, polypropylene, tetrafluoroethylene and vinyl chloride), rubber, metal, and non-metal parts which require immediate and strong adhesion.
	LT-2	09940-00030	50 g	Polyethylene container	<ul style="list-style-type: none"> • Features: Resistance to heat and chemicals • Used to fix and seal bolts and plugs.
	LT-3	790-129-9060 (Set of adhesive and hardener)	Adhesive: 1 kg Hardener: 500 g	Can	<ul style="list-style-type: none"> • Used to stick metal, glass, and plastics.
	LT-4	790-129-9040	250 g	Polyethylene container	<ul style="list-style-type: none"> • Used to seal plugs.
	Holtz MH 705	790-126-9120	75 g	Tube	<ul style="list-style-type: none"> • Heat-resistant seal used to repair engines
	Threebond 1735	790-129-9140	50 g	Polyethylene container	<ul style="list-style-type: none"> • Quick-setting adhesive • Setting time: Within 5 sec. to 3 min. • Used mainly to stick metals, rubbers, plastics, and woods.
	Aron-alpha 201	790-129-9130	2 g	Polyethylene container	<ul style="list-style-type: none"> • Quick-setting adhesive • Quick-setting type (max. strength is obtained after 30 minutes) • Used mainly to stick rubbers, plastics, and metals.
	Loctite 648-50	79A-129-9110	50 cc	Polyethylene container	<ul style="list-style-type: none"> • Features: Resistance to heat and chemicals • Used for fitted portions used at high temperatures.
Gasket sealant	LG-1	790-129-9010	200 g	Tube	<ul style="list-style-type: none"> • Used to stick or seal gaskets and packings of power train case, etc.
	LG-5	790-129-9080	1 kg	Polyethylene container	<ul style="list-style-type: none"> • Used to seal various threaded portions, pipe joints, and flanges. • Used to seal tapered plugs, elbows, and nipples of hydraulic piping.
	LG-6	790-129-9020	200 g	Tube	<ul style="list-style-type: none"> • Features: Silicon-based heat and cold-resistant sealant • Used to sea flange surfaces and threaded portions. • Used to seal oil pan, final drive case, etc.
	LG-7	790-129-9070	1 kg	Tube	<ul style="list-style-type: none"> • Features: Silicon-based quick-setting sealant • Used to seal flywheel housing, intake manifold, oil pan, thermostat housing, etc.
	Three bond 1211	790-129-9090	100 g	Tube	<ul style="list-style-type: none"> • Gasket sealant used to repair engine
	Three bond 1207B	419-15-18131	100 g	Tube	<ul style="list-style-type: none"> • Features: Silicon-based, heat and cold-resistant, vibration-resistant, impact-resistant sealant • Used to seal transfer case, etc.
Molybdenum disulfide lubricant	LM-G	09940-00051	60 g	Can	<ul style="list-style-type: none"> • Used to lubricate sliding portions (to prevent squeaking).
	LM-P	09940-00040	200 g	Tube	<ul style="list-style-type: none"> • Used to prevent scuffing and seizure of press-fitted portions, shrink-fitted portions, and threaded portions. • Used to lubricate linkages, bearings, etc.

Installation of travel motor cover (1/3)



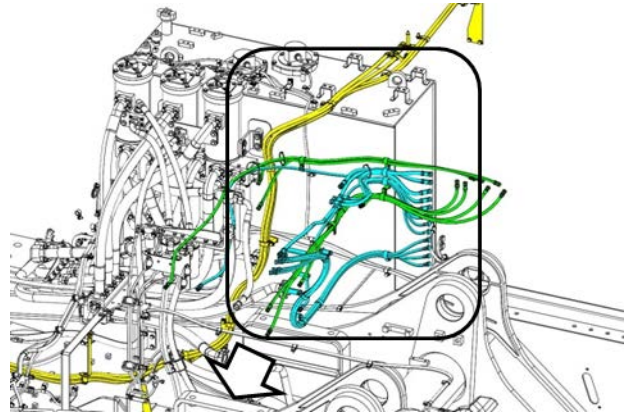
P
16 PLACES



No.	Part No.	Parts name	Q'ty
A-15	01010-82460	Bolt	16
A-16	01643-32460	Washer	16
A-17	21T-30-32370	Collar	16

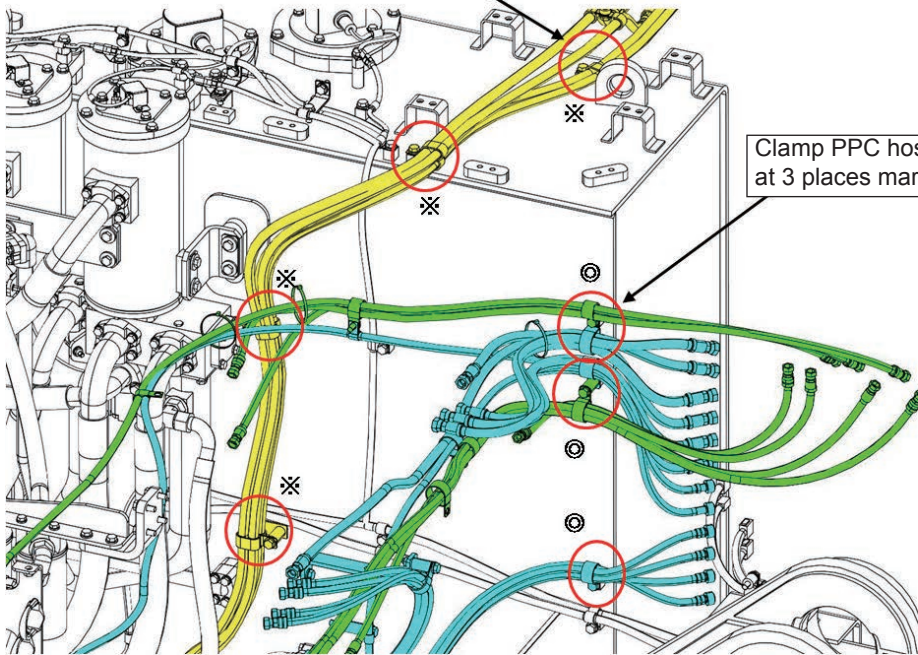
Precautions	Tools required		Equipment required	
	Name	Q'ty	Name	Q'ty
Travel motor guard is installed to crawler frame assembly when transported. Travel motor cover is installed temporarily to crawler frame assembly when transported. ★ Before performing this item, bleed air from the travel motor.	Air impact wrench	1		
	Socket 36mm in width across flats	1		
Others				

For disassembly to 27 t

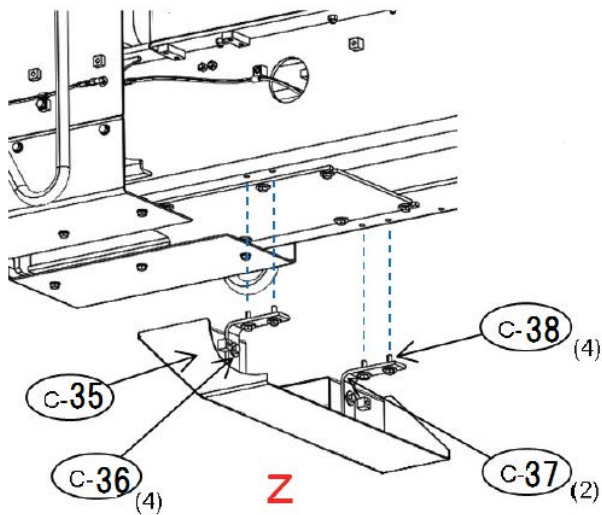
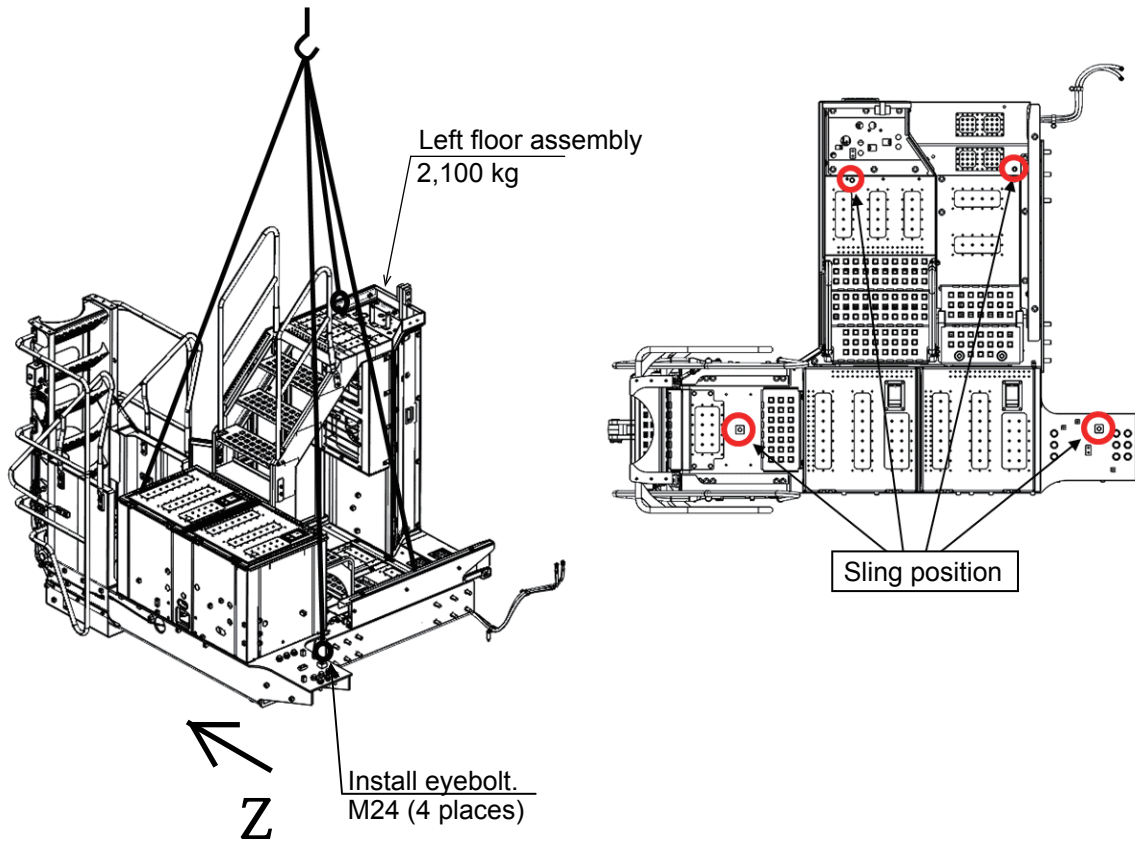


Clamp air conditioner hoses at 4 places marked with ✖.

Clamp PPC hoses at 3 places marked with ⊙.



Precautions	Tools required		Equipment required	
	Name	Q'ty	Name	Q'ty
Others				

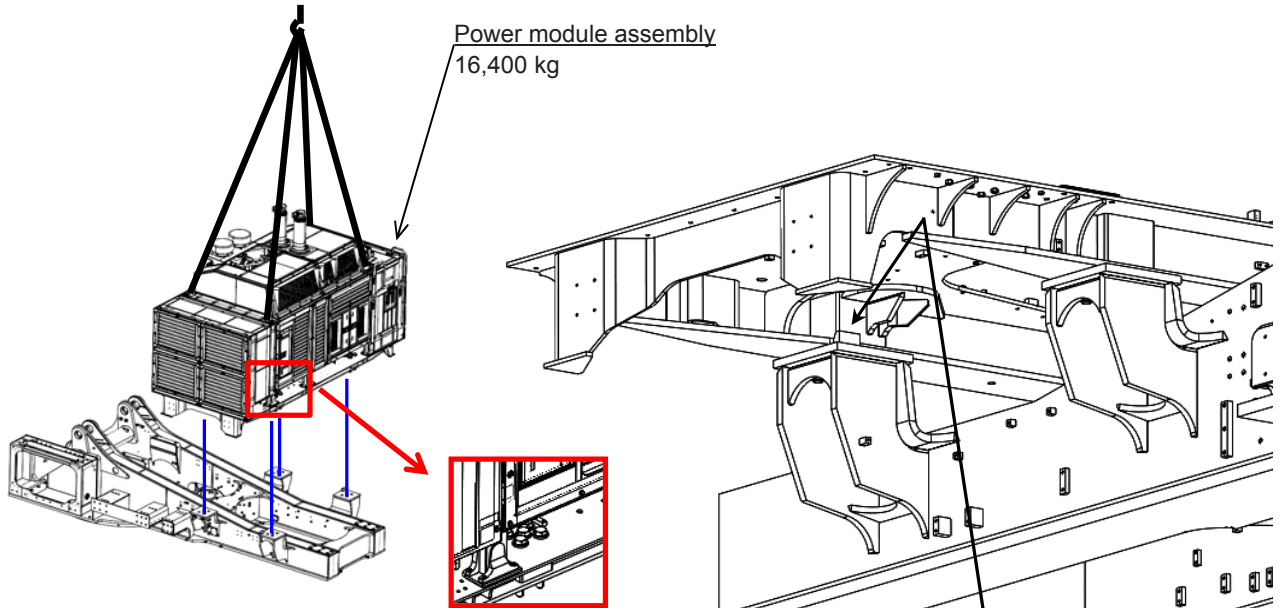


installing exterior parts,
their level difference
these shims. (See A-47.)

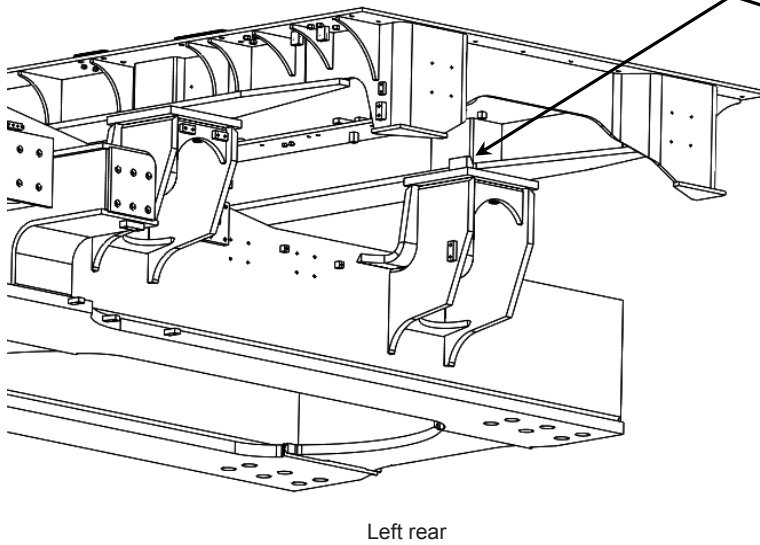
No.	Part No.	Parts name	Q'ty
C-35	21T-54-43370-NK	Cover	1
C-36	01034-81240	Bolt	4
C-37	21T-53-32820-NK	Bracket	2
C-38	01034-81240	Bolt	4

Precautions	Tools required		Equipment required	
	Name	Q'ty	Name	Q'ty
After the work, return the bolts removed to install the eyebolts.	Air impact wrench	1		
	Socket 19mm in width across flats	1		
Others				

Installation of power module assembly (1/2)

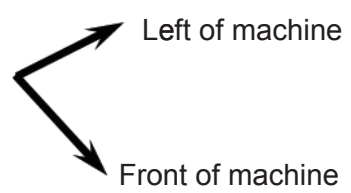
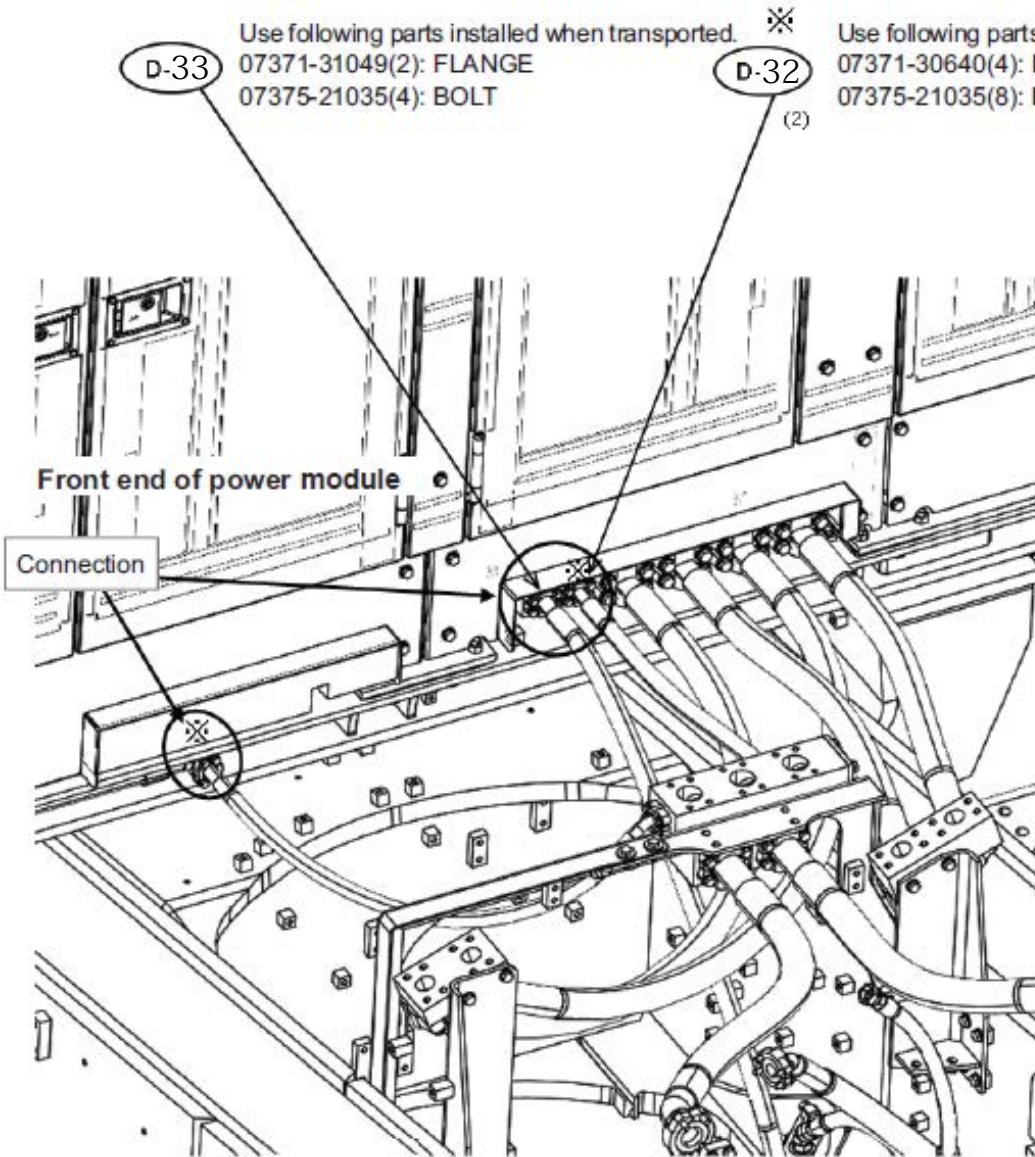


- Install bolts to the installation hole before installing power module for ease of transportation of heavy equipment.



Precautions	Tools required		Equipment required	
	Name	Q'ty	Name	Q'ty
<ul style="list-style-type: none"> ★ Be careful not to fall down yourself. ★ Before installation, drain remaining oil from piping. 				
Others				

Connection of pilot piping and fan motor piping

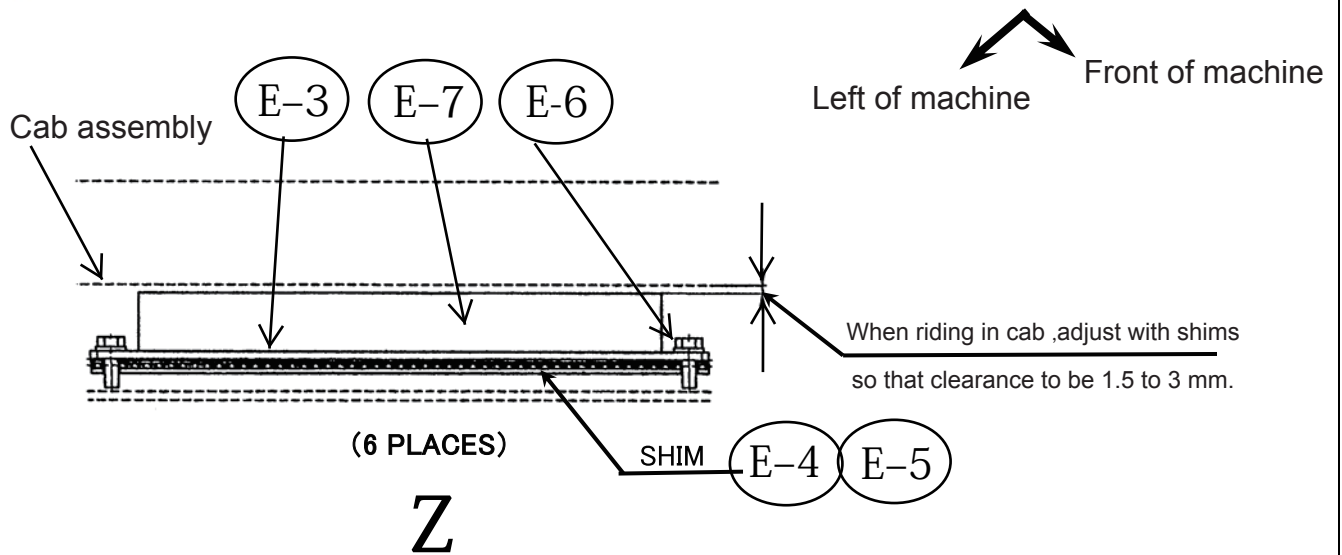
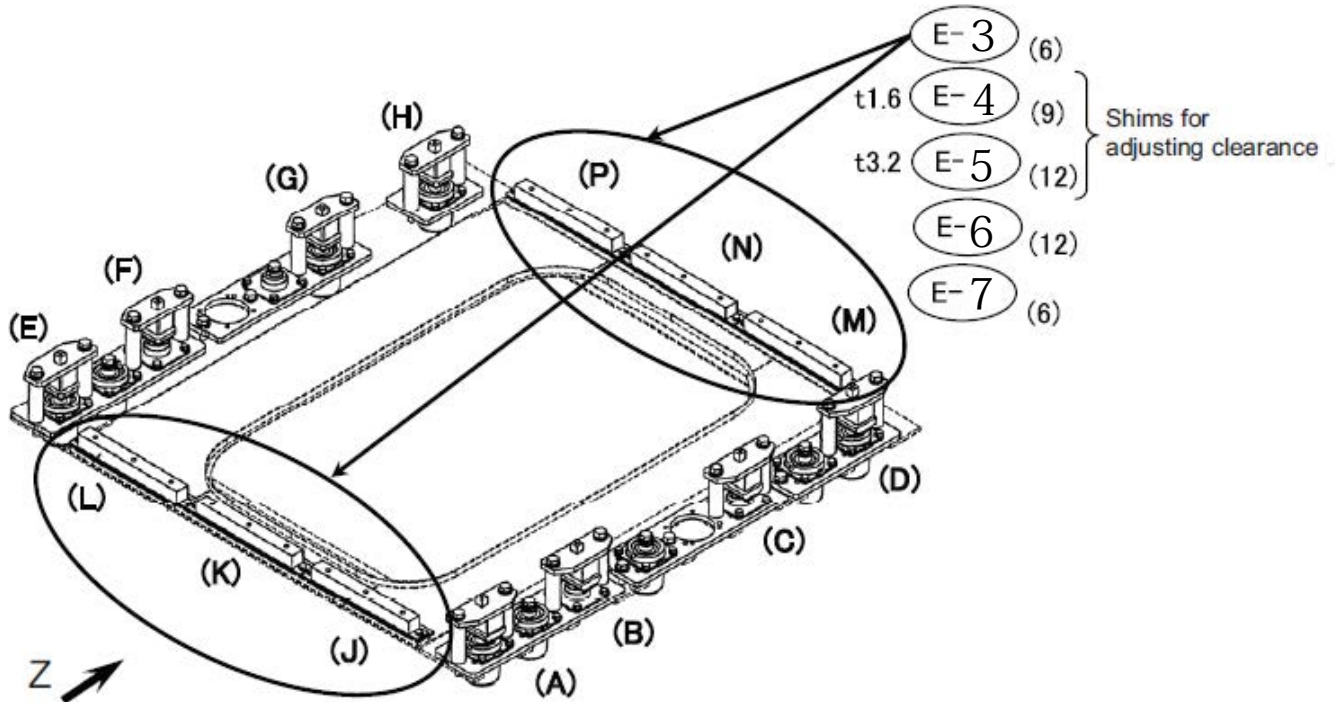


Use following parts installed when transported. ※
 07371-31049(2): FLANGE
 07375-21035(4): BOLT

Use following parts installed when transported. ※
 07371-30640(4): FLANGE
 07375-21035(8): BOLT

No.	Part No.	Parts name	Q'ty
※ D-32	07000-B3025	O-ring	2
D-33	07000-B3032	O-ring	1

Precautions	Tools required		Equipment required	
	Name	Q'ty	Name	Q'ty
	Air impact wrench	1		
	Socket 19 mm in width across flats	1		
	Extension L200	1		
	Others			



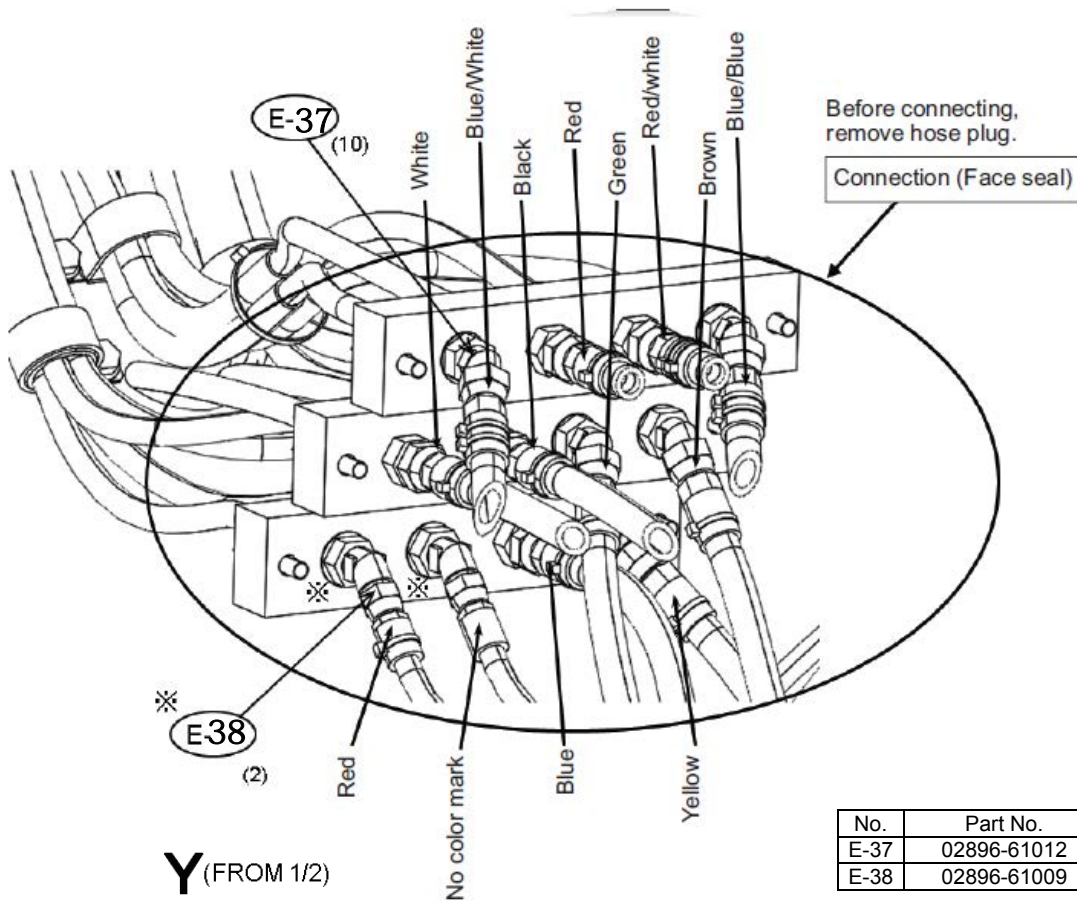
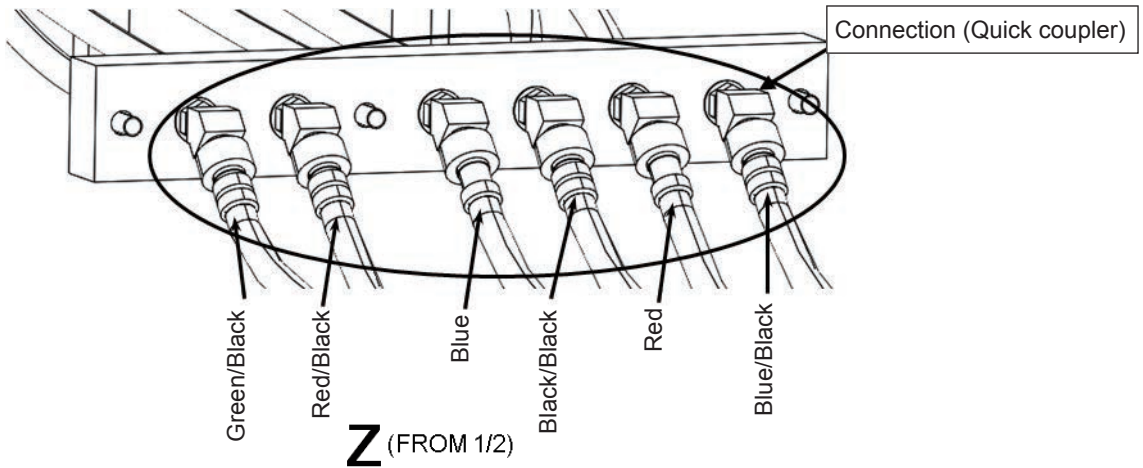
STD. Quantites of Shim

Portion	Part Number	Quantities	Part Number	Quantities
J	21T-54-36690	1	21T-54-36680	1
K	21T-54-36690	1	21T-54-36680	1
L	21T-54-36690	1	21T-54-36680	1
M	21T-54-36690	3		
N	21T-54-36690	2	21T-54-36680	1
P	21T-54-36690	2	21T-54-36680	1

No.	Part No.	Parts name	Q'ty
E-3	21T-54-37980	Bracket	6
E-4	21T-54-36680	Plate	9
E-5	21T-54-36690	Plate	12
E-6	01024-81030	Bolt	12
E-7	21T-54-37990	Cushion	6

Precautions		Tools required		Equipment required	
Take care not to break the mount dowel pin.		Name		Name	
		Q'ty		Q'ty	
		Air impact wrench		1	
		Socket 17 mm in width across flats		1	
		Extension L200		1	
Others					

Connection of operator's cab assembly hydraulic piping (2/2)

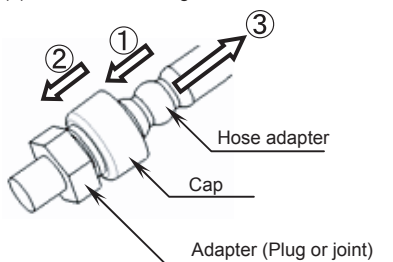


No.	Part No.	Parts name	Q'ty
E-37	02896-61012	O-ring	10
E-38	02896-61009	O-ring	2

Precautions

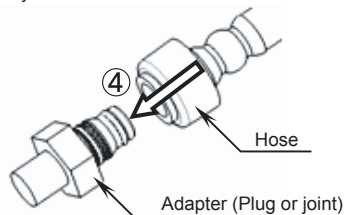
Disconnection of quick coupler

- (1) Push the hose adapter into the adapter.
- (2) Push the cap into the adapter.
- (3) Pull the hose straight.



Connection of quick coupler

- (4) Hold the hose adapter and push it straight into the adapter until it clicks. After connecting the hose, pull its adapter lightly to check that it will not come off.



Tools required

Name	Q'ty	Equipment required	
		Name	Q'ty
Spanner	1		

Others

CLICK HERE TO **DOWNLOAD** THE COMPLETE MANUAL

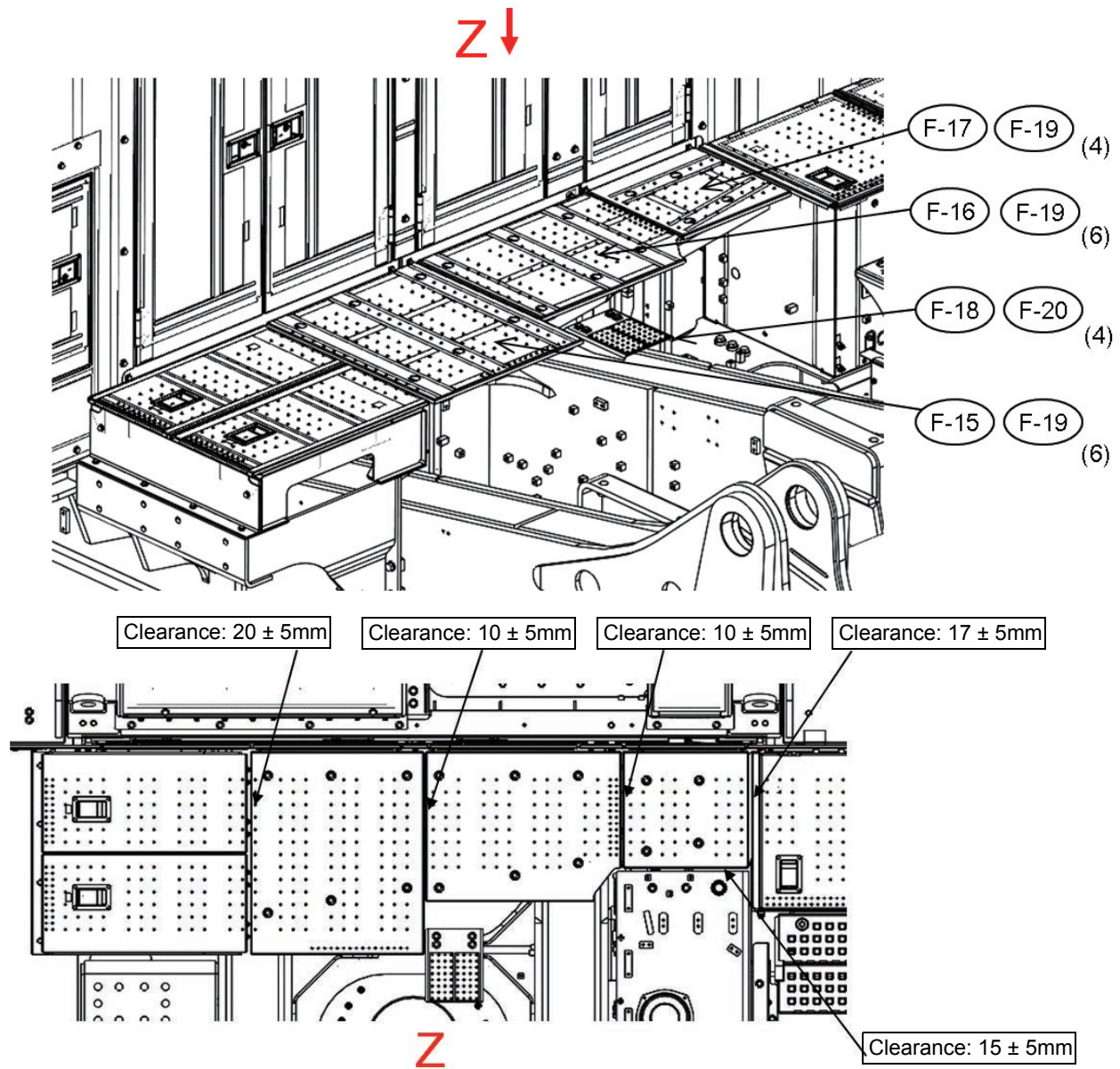
- Thank you very much for reading the preview of the manual.
- You can download the complete manual from: www.heydownloads.com by clicking the link below



- Please note: If there is no response to CLICKING the link, please download this PDF first and then click on it.

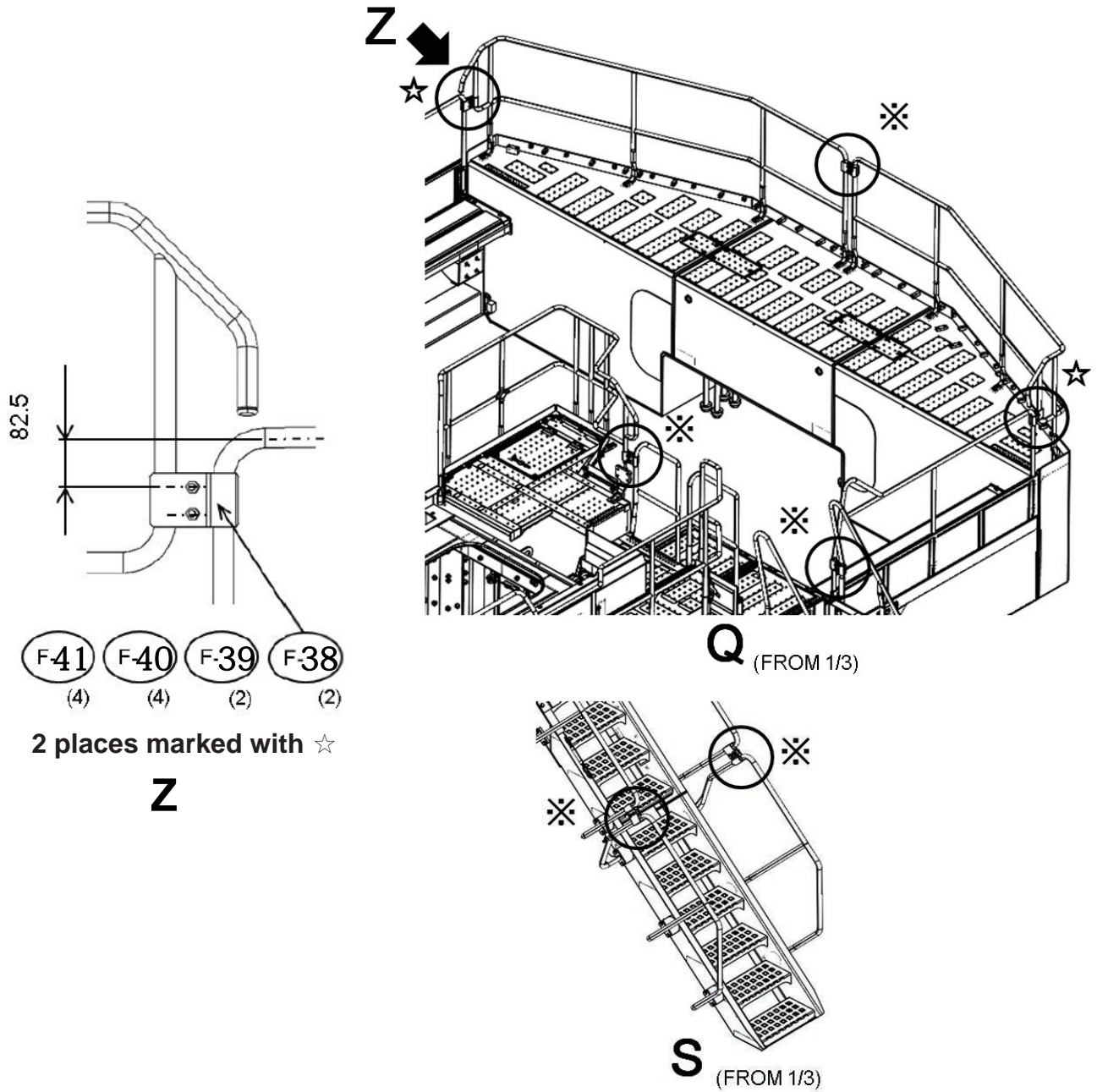
CLICK HERE TO **DOWNLOAD** THE COMPLETE MANUAL

Installation of right floor assembly, grease can cover assembly and center floor (2/2)



No.	Part No.	Parts name	Q'ty
F-15	21T-54-33731-NK	Cover	1
F-16	21T-54-33781-NK	Cover	1
F-17	21T-54-33791-NK	Cover	1
F-18	21T-53-31590-NK	Step	1
F-19	01034-81230	Bolt,sems	16
F-20	01034-81285	Bolt	4

Precautions	Tools required		Equipment required	
	Name	Q'ty	Name	Q'ty
	Air impact wrench	1		
	Socket 19 mm in width across flats	1		
	Extension L200	1		
	Others			



Precautions	Tools required		Equipment required	
	Name	Q'ty	Name	Q'ty
	Air impact wrench	1		
	Socket 19 mm in width across flats	1		
	Extention L200	1		
Others				

(3) Air bleeding from swing motor circuit (Swing motor)

★ When removing and installing the swing motor or when disconnecting and connecting the swing motor main circuit pipes, bleed air from the swing motor according to the following procedures.

⚠ If air was not bled or air was bled insufficiently, the swing motor may be damaged. So, be sure to bleed air strictly according to the procedures.

- 1) Start the engine and operate it while the engine is idling at low speed.
- 2) Repeat operations of swing, start, and stop 5 or 6 times.




(4) Air bleeding from swing motor circuit (Parking brake circuit)

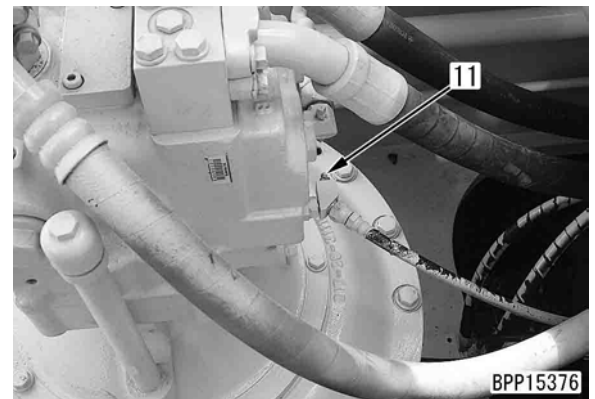
★ When removing and installing the swing motor or when disconnecting and connecting the swing holding brake circuit piping, bleed air from the brake circuit according to the following procedures.

⚠ If air was not bled or air was bled insufficiently, the swing holding brake may be dragged. So, be sure to bleed air strictly according to the procedures.

- 1) Start the engine and loosen bleeder (11).
 - ★ The bleeder is mounted on the front and rear swing motors.
- 2) Turn off the swing lock switch.
- 3) Swing the machine while the engine is idling at low speed and make sure that bubble-free oil flows out of bleeder (11). Then, tighten the bleeders.

 Bleeder : **8.8 – 9.8Nm {0.9 – 1.0kgm}**

★ The swing operation may be as faintly as the swing oil pressure switch turns on.




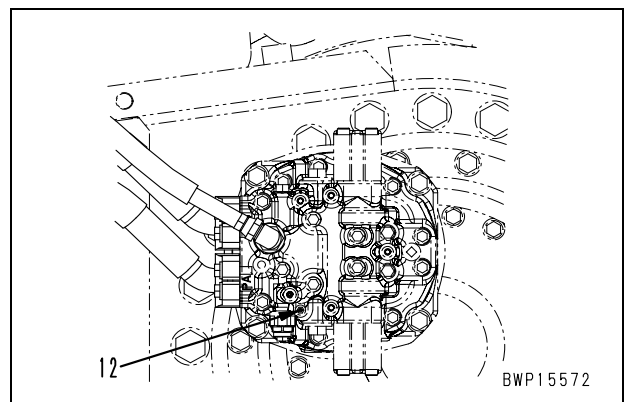
(5) Air Bleeding from travel motor circuit (Travel motor)

★ When removing and installing the travel motor or when disconnecting and connecting the travel motor main circuit pipes, bleed air from the travel motor according to the following procedures.

⚠ If air was not bled or air was bled insufficiently, the travel motor may be damaged. So, be sure to bleed air strictly according to the procedures.

- 1) Start the engine and loosen bleeder (12).
 - ★ The bleeder is mounted on the LH and RH travel motors.
- 2) Make sure that bubble-free oil flows out of the bleeders (12). Then, tighten the bleeder.

 Bleeder : **8.8 – 9.8Nm {0.9 – 1.0kgm}**

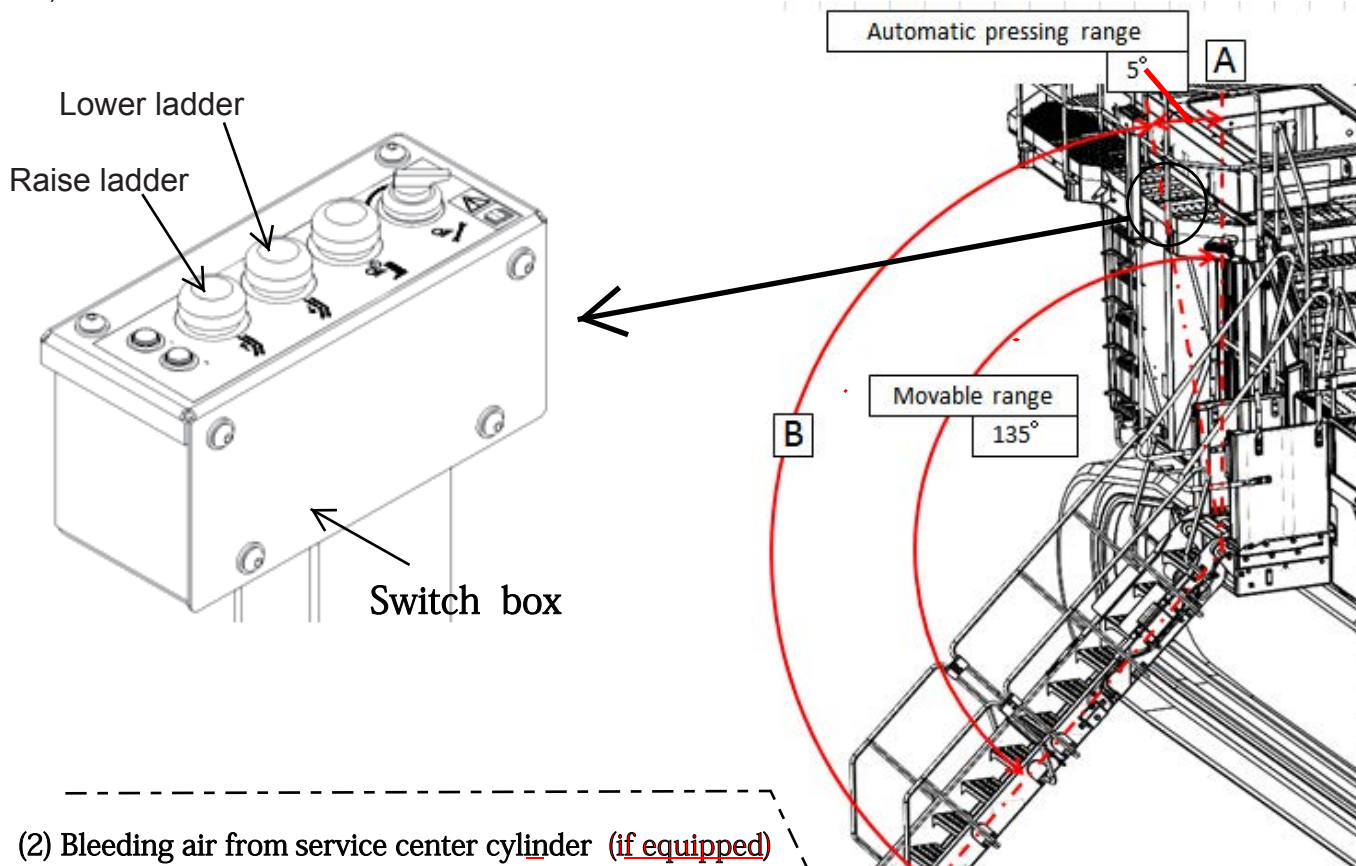


Starting engine, checking oil and coolant levels, bleeding air from each part, and adjusting track (15/15)

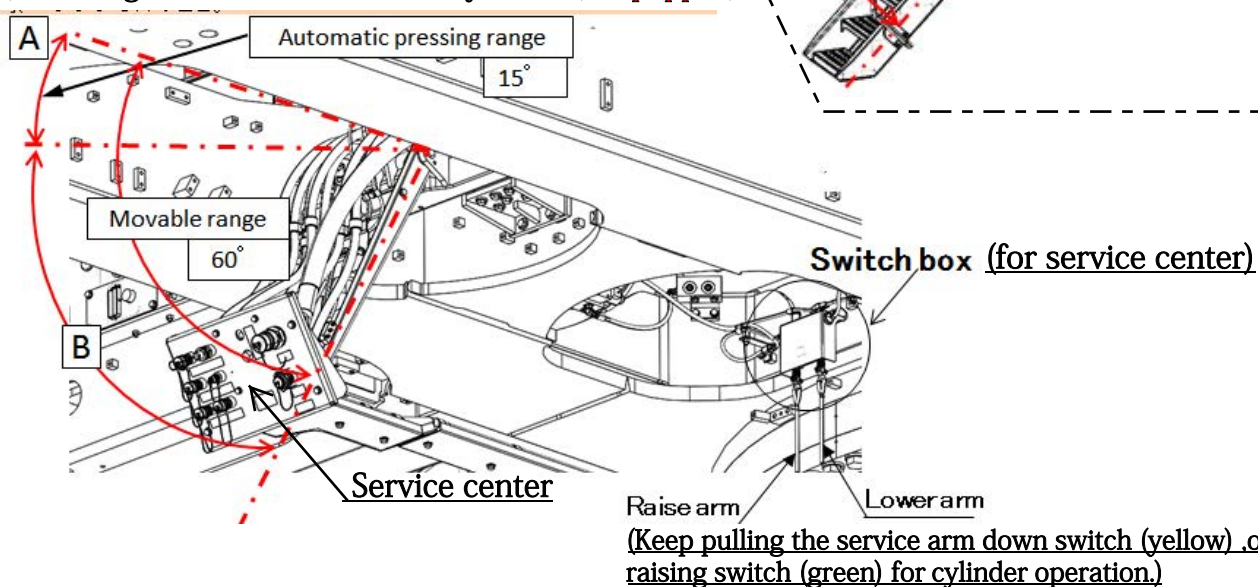
Bleeding air from each hydraulic cylinder (Hydraulic ladder spec. or service senter spec.)

(1) Bleeding air from hydlaulic ladder cylinder

- 1) Raise and lower the ladder 5 – 6 times in a range (B) where the ladder automatic pressing system does not work.
- 2) Hold the ladder in the ladder storage position (A) for 3 minutes. Keep the engine running in this period.



(2) Bleeding air from service center cylinder (if equipped)

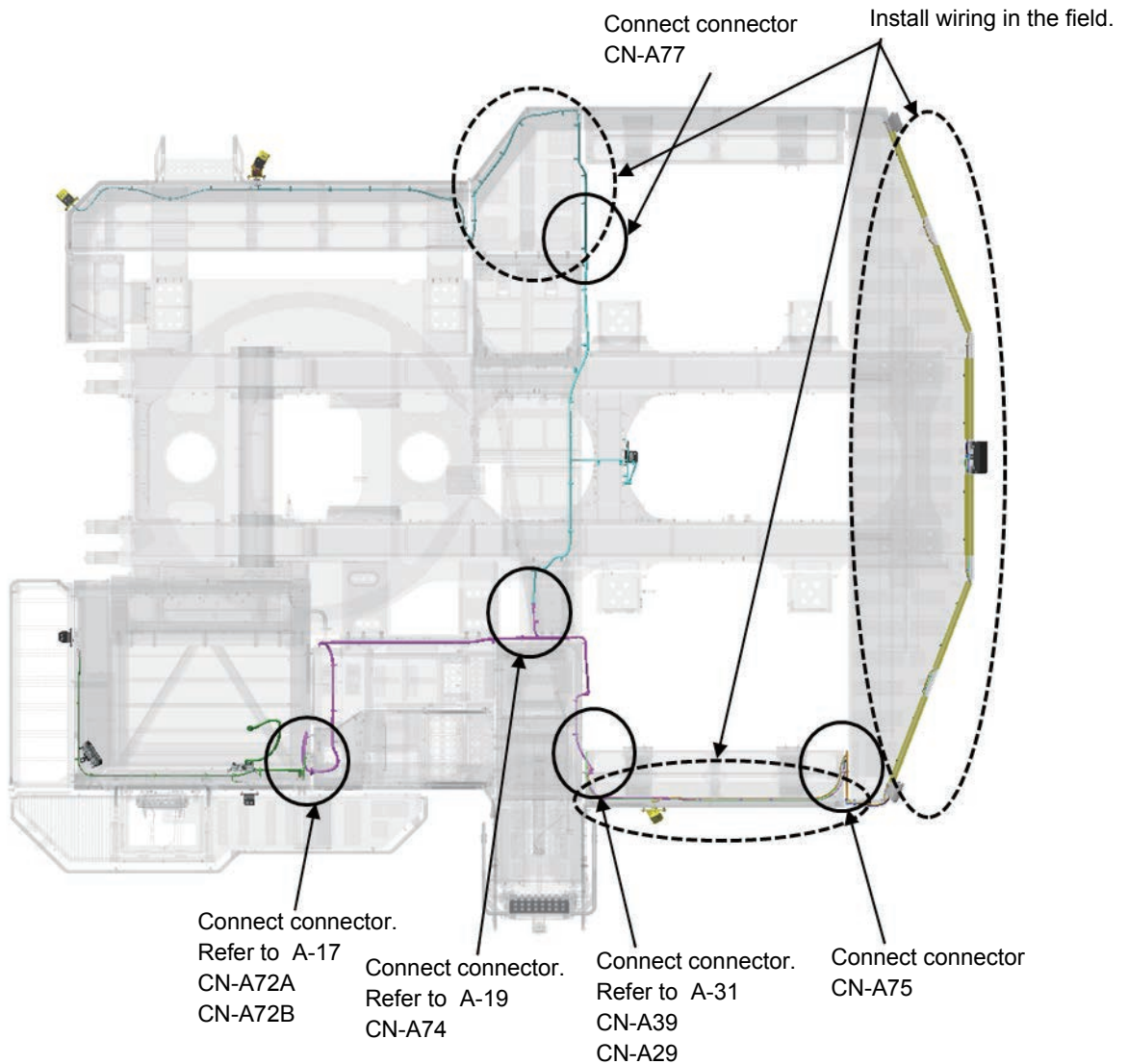


1. Raise and lower the service center arm 5-6 times in a range(B) where the arm automatic pressing system does not work.
2. Hold the service center arm in the storage position (A) for 3 minutes. Keep the engine running in this period.

Precautions

1. While the ladder and service center are not in the storage position (While the upper proximity switch is not ON), the control lever is locked (hydraulically) and the machine cannot be operated. When operating the machine (travelling or swinging the machine or operating the work equipment), store the ladder and service center.
2. When the cylinder piping needs to be removed, release the pressure in the circuit according to the following procedure, and then remove the piping.
 - With the ladder lowered, hold down the LOWER button for **5 seconds**.
 - With the service center lowered, hold down the LOWER button for **6 seconds**.

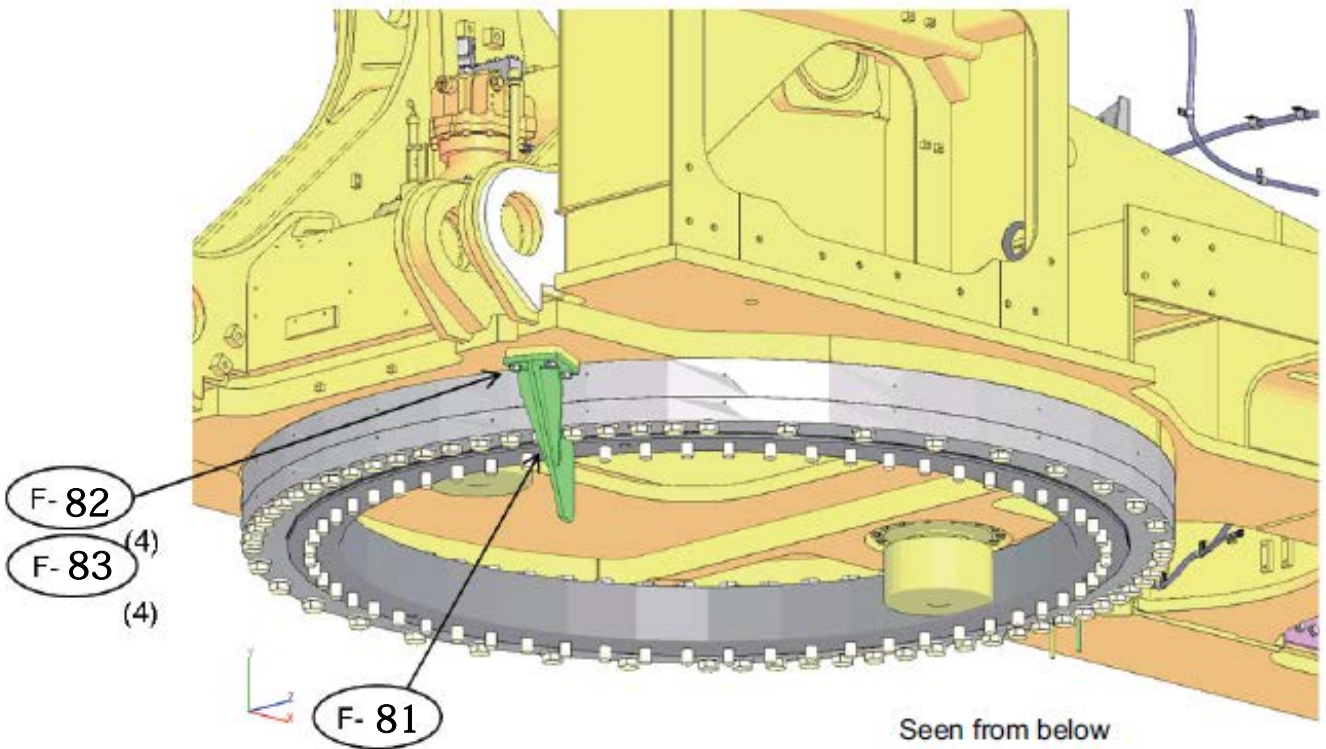
Installation of KomVision harness



Precautions	Tools required		Equipment required	
	Name	Q'ty	Name	Q'ty
	Air impact wrench	1		
	Socket 19 mm in width across flats	1		
	Extension L200	1		
	Others			

Installation of guard bracket (if equipped)

This item is for service center specification only

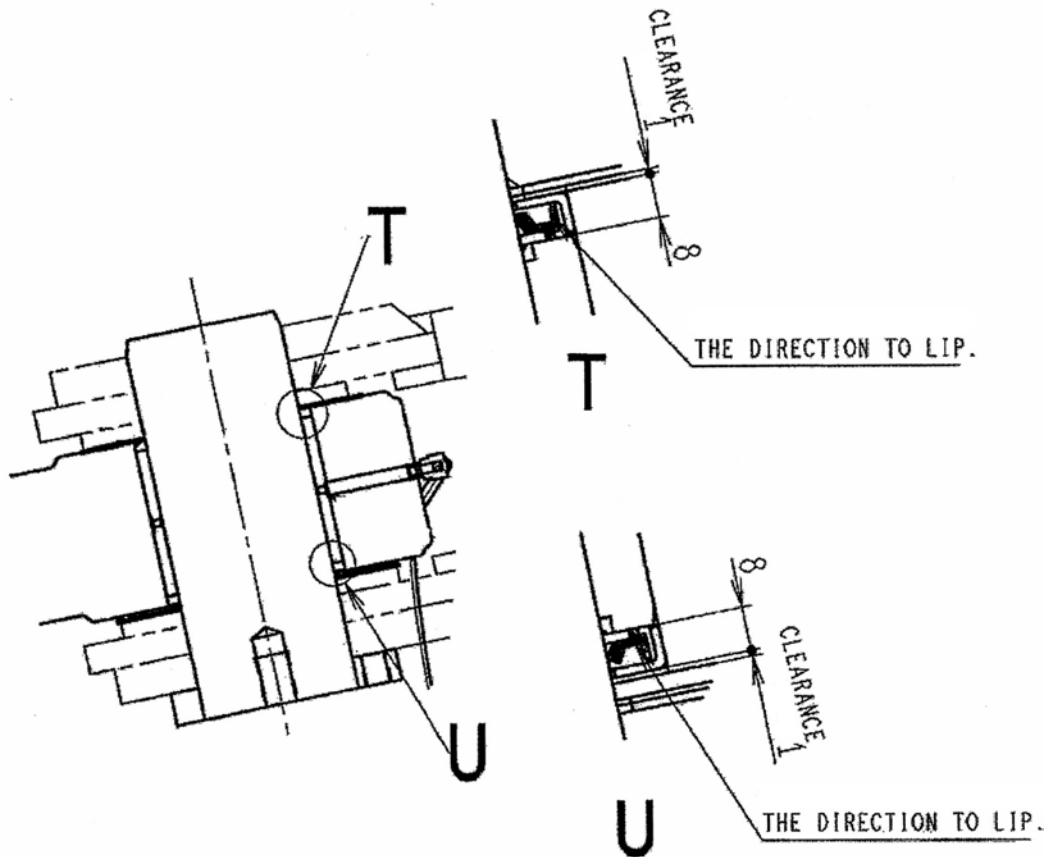
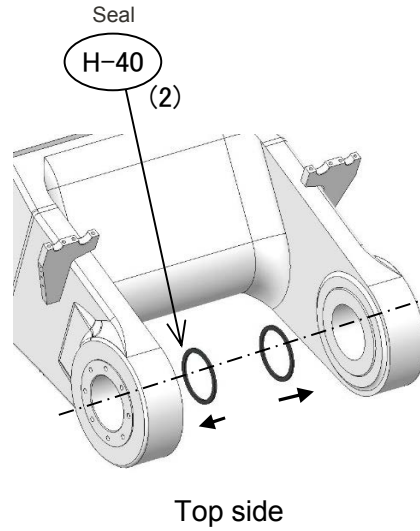
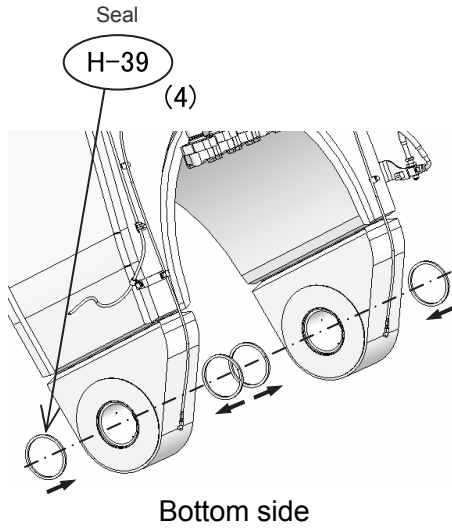


No.	Part No.	Parts name	Q'ty
F-81	21T-46-31161-NK	Bracket	1
F-82	01010-82050	Bolt	4
F-83	01643-32060	Washer	4

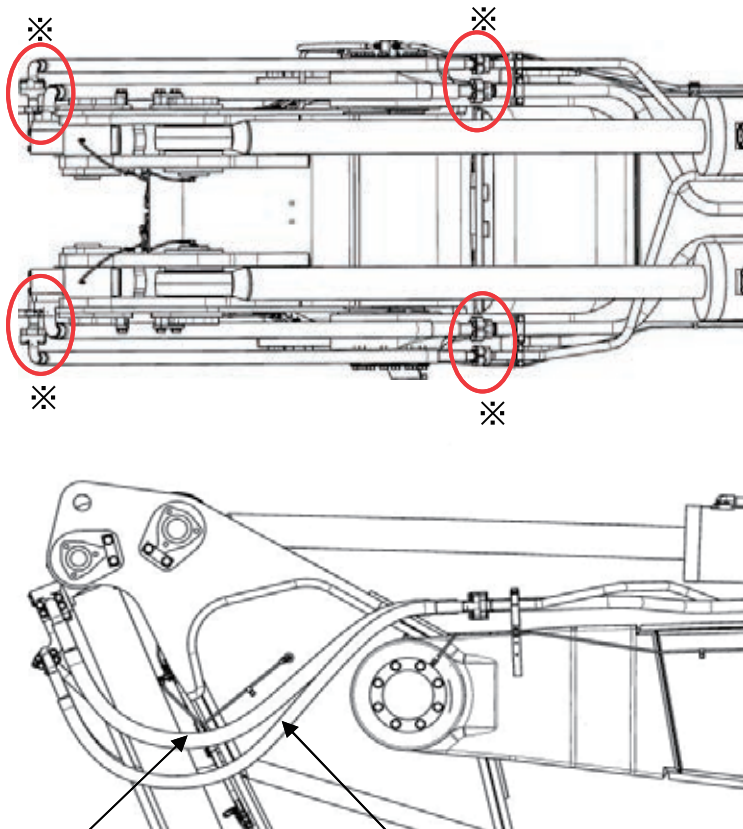
Precautions	Tools required		Equipment required	
	Name	Q'ty	Name	Q'ty
	Air impact wrench	1		
	Socket 30 mm in width across flats	1		
	Extension L200	1		
	Others			

Assembly of boom sub assembly (5/5)

Install the seal as seen in figure below.
4 places on right and left of boom.



Connection of hoses between boom and arm



Remove the oil stoppers from the boom piping (tubes) and bucket cylinder piping, and then install the 4 hoses as shown in the following figure.

Connecting parts: 8 places marked with ※

Use the split flanges, bolts, etc. used to install the oil stoppers on the tube side as they are.

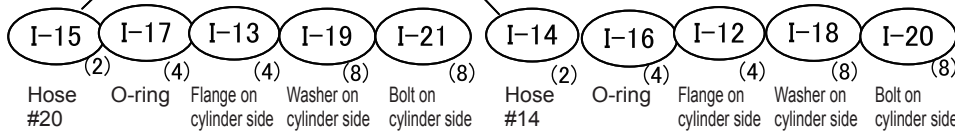
Parts to install oil stoppers (on tube side)

#20 Hose

- 07371-52080 (Flange) × 4 pcs.: Reuse
- 01010-81865 (Bolt) × 8 pcs.: Reuse
- 01643-31845 (Washer) × 8 pcs.: Reuse
- 07000-B2060 (O-ring) × 2 pcs.: Keep
- 07378-12010 (Head) × 2 pcs.: Keep

#14 Hose

- 07371-51470 (Flange) × 4 pcs.: Reuse
- 01010-81455 (Bolt) × 8 pcs.: Reuse
- 01643-31445 (Washer) × 8 pcs.: Reuse
- 07000-B3048 (O-ring) × 2 pcs.: Keep
- 07378-11410 (Head) × 2 pcs.: Keep



No.	Part No.	Parts name	Q'ty
I-17	07000-B2060	O-ring	4
I-18	01643-31445	Washer	8
I-19	01643-31845	Washer	8
I-20	01010-81455	Bolt	8
I-21	01010-81865	Bolt	8

No.	Part No.	Parts name	Q'ty
I-12	07371-51470	Flange	4
I-13	07371-52080	Flange	4
I-14	07084-C1427	Hose	2
I-15	21T-64-41870	Hose	2
I-16	07000-B3048	O-ring	4

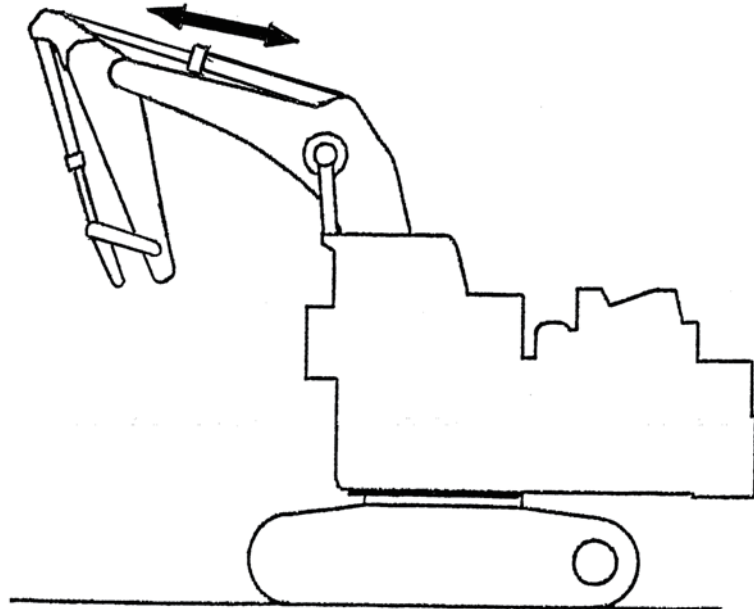
Precautions	Tools required		Equipment required	
	Name	Q'ty	Name	Q'ty
1. Take care not to catch the O-rings in the parts (Apply grease to them before installing). 2. After connecting the hoses, bleed air from the bucket cylinder securely. 3. When the oil stopper is removed, oil spouts out. Take care.	22 mm Socket	1		
	27 mm Socket	1		
	200 mm Extension	1		
	Air Impact wrench	1		
Others				

Assembly procedure	Bleeding air from cylinders (3/4)
C-14	

Bleeding air from arm cylinder (Carry out this operation before installing the bucket)

After assembling the arm and arm cylinder, bleed air from the arm cylinder according to the following procedure.

- (1) While running the engine at low idle, extend and retract the arm cylinder 5 - 6 times, stopping it at about 100 - 200 mm before each stroke end.
- (2) Run the engine at full throttle and perform step (1).
 - ★ Do not move the cylinder to the stroke end.
 - ★ Do not set the engine speed high or move the cylinder to a stroke end from the first. (Air in the cylinder may damage the piston packing etc.)
 - ★ After starting the engine, warm it up sufficiently to fit all the parts.



Precautions	Tools required		Equipment required	
	Name	Q'ty	Name	Q'ty
	Others			

Installed state of element



Fig. 1 Good state

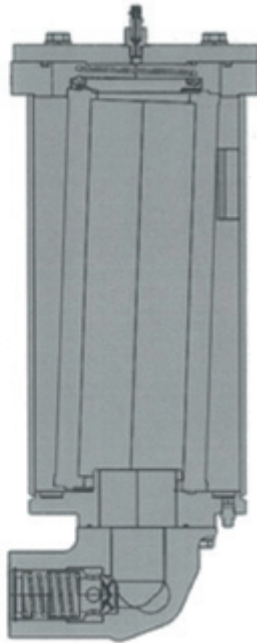


Fig. 2 Bad state

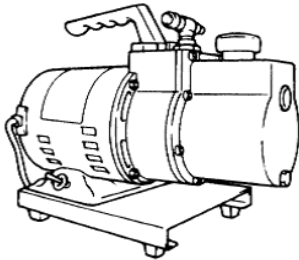
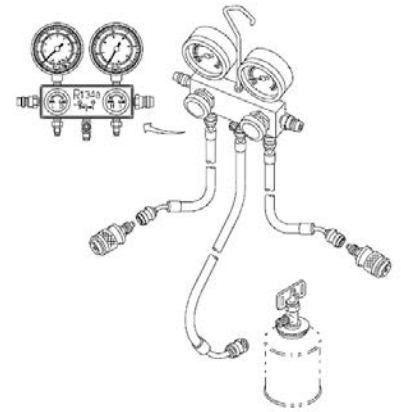
- ★ Do not install the element with its bottom on the elevated part of the case bottom as shown in Fig. 2.
When the filter case is filled with oil, it is difficult to check if the element is inserted correctly. Turn the element by hand after inserting it in the case.
When it turns smoothly, judge that it is inserted correctly.

Precautions	Tools required		Equipment required	
	Name	Q'ty	Name	Q'ty
Others				

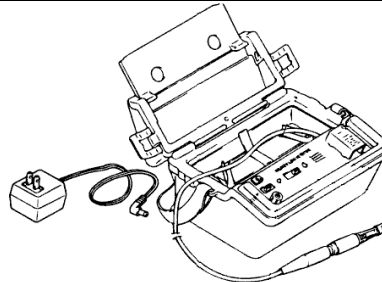
Charging air conditioner with refrigerant (1/3)

Using the tool kit in the following table, charge the air conditioner with gas.

Symbol	Part No.	Part name	Remarks	
N	1	799-703-1200	Service tool kit	
	2	799-703-1100	Vacuum pump	For HFC134a (R134a) (100 V)
		799-703-1111	Vacuum pump	For HFC134a (R134a) (220 V)
		799-703-1121	Vacuum pump	For HFC134a (R134a) (240 V)
O	799-703-1401	Gas leak detector		



N2: Vacuum pump



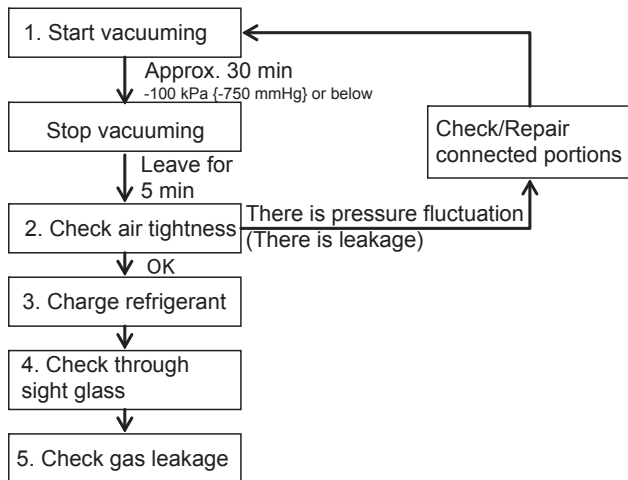
O: Gas leak detector

N1: Service tool

Charge the air conditioner gas according to the following procedure.
For detail, see the next pages and after.

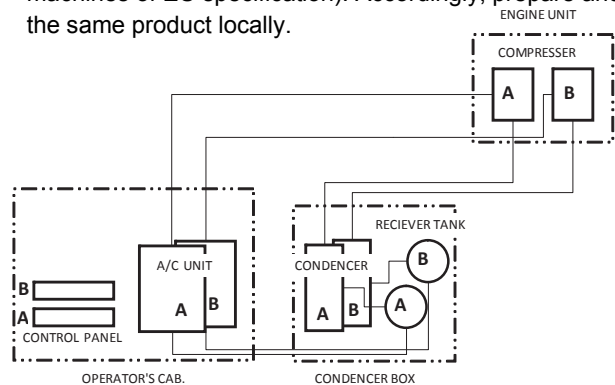
★ Since PC2000-11 is equipped with two air conditioners, charge them one by one, checking A and B shown in the figure.

Type of air conditioner gas: HFC134a (R134a)
Amount of charge: Front compressor (A): 980 ± 50 g
Rear compressor (B): 960 ± 50 g



Charge them with refrigerant in five each of 200g air conditioner gas can (20Y-979-3310) through the compressors of A and B. Use the air conditioner gas supplied loose from the plant. Do not use any other gas.

However, it cannot be supplied loose in the EU district (for the machines of EU specification). Accordingly, prepare and use the same product locally.



	Precautions		Tools required		Equipment required	
	Name	Q'ty	Name	Q'ty	Name	Q'ty
	If refrigerant gas gets in your eyes, you may lose your sight. Accordingly, when adding it, put on protective goggles.					
	Gas must be collected and charged by a specialist.					
	For details of refrigerant charging procedure, see the instruction manual for the tool kit.					
	Be sure to observe the amount of air conditioner gas to be charged.					
	If automatic charging machine is used, be sure to follow its operation manual to charge specified amount (front: 980 g, rear: 960 g)					
Others						

Assembly Procedure	Method of camera calibration for KomVision (1/13)		
M-9			

Calibration Flow

1. Calibration Sheet Spreading
 - 1-1:Required equipment and working space
 - 1-2:Sheet Spreading

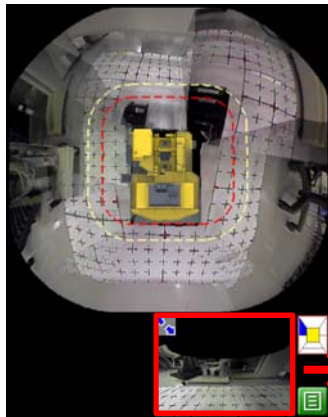
2. Calibration procedure
 - 2-1:Calibration procedure (Auto)
 - 2-2:Calibration procedure (Manual)
 - 2-3:Aujustplate in front of camera 2 & camera 3.
 - 2-4:Adjust angle of other cameras.

3. Reference
 - 3-1:Calibration Marker Point (PC2000-11R)

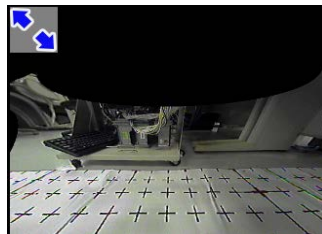
Precautions	Tool require		Equipment require	
	Name	Q'ty	Name	Q'ty
	Others			

2-3.Adjust plate in front of camera 2 & camera 3.

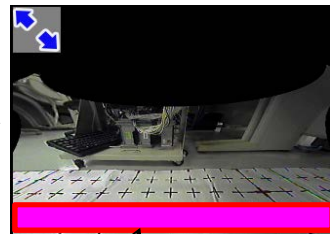
Adjust front plate of Camera 2 & Camera 3 to show car body approx 5% in camera display. Reason for understanding car body side easily.



<Before>

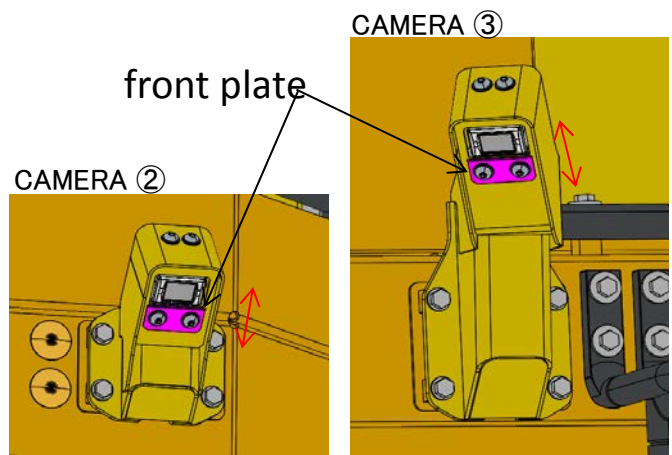
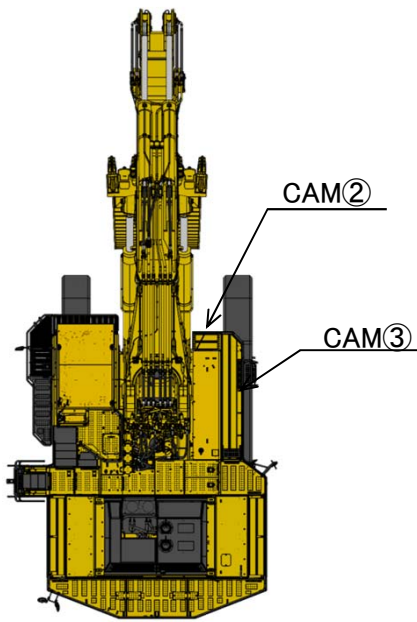


<After>



Car body side

approx 5%



Precautions

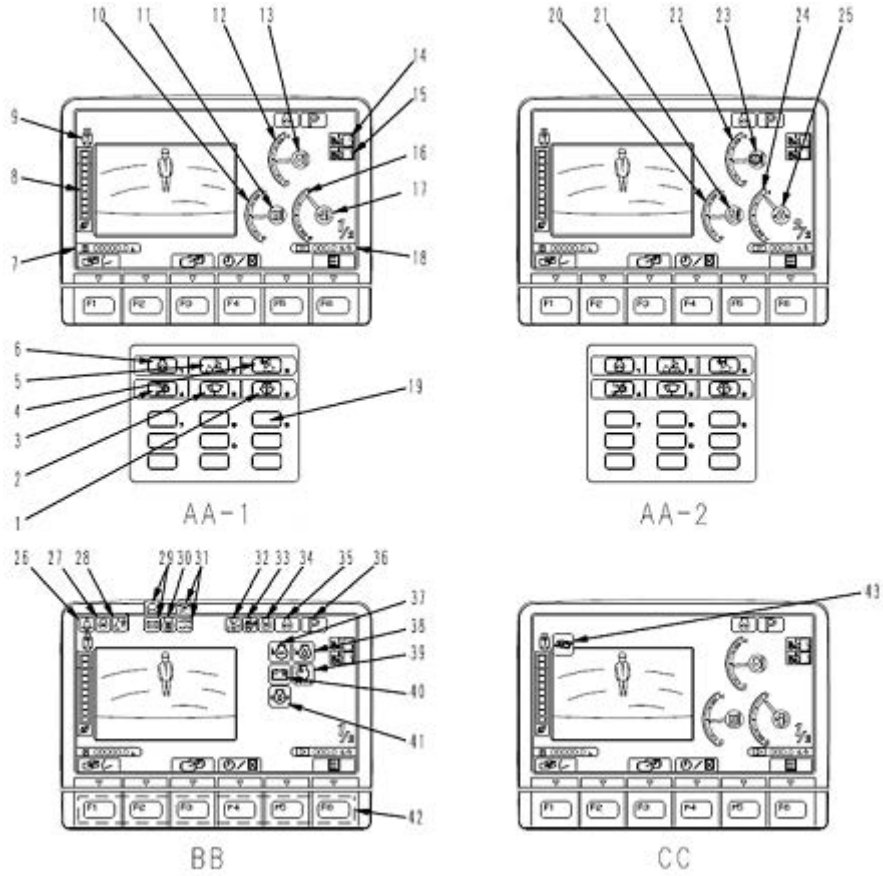
Tool require

Equipment require

Name	Q'ty	Name	Q'ty
Hexagonal wrench 6mm width across flats	1		
Others			

Category	Revision	Check item	At local assembly time	At ___ operating hours	Criterion
		Monitor display 1. Check of monitor function When the starting switch is turned ON, all of the gauge section, check-before-starting section and monitor section must light up and alarm buzzer must sound.			Display must be as shown on left.
		2. Check of gauge section and check-before-starting section All lamps must go off about 3 seconds after the starting switch is turned ON (all lamps are ON), then 2 seconds after, only the gauge section is displayed and the check-before-starting section and monitor section are kept OFF.			
		3. Check of monitor section After the engine is started, the caution lamps must not light up and the alarm buzzer must not sound in the range between low idle and high idle.			
		Operation of service meter			Service meter must be free from flaw, blur and uneven operation.
		Initialization of KOMTRAX Plus			Initialization must be executed. (Pm clinic, downloading, application for start of use).

Monitor



AA-1: Standard screen (1/2), AA-2: Standard screen (2/2), BB: Check before starting screen, CC: Maintenance time warning screen

Press the switch F1 to switch between screen AA-1 and screen AA-2.

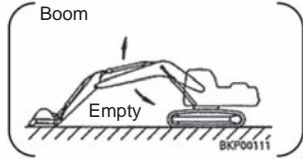
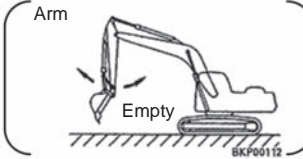
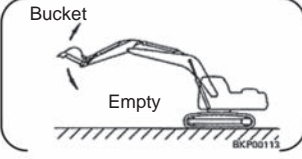
- (1) Window washer switch
- (2) Wiper switch
- (3) Buzzer cancel switch
- (4) Heavy lift switch
- (5) Working mode selector switch
- (6) Auto-deceleration switch
- (7) Service meter/lock
- (8) ECO gauge
- (9) Camera direction display
- (10) Hydraulic oil temperature gauge
- (11) Hydraulic oil temperature caution lamp
- (12) Engine coolant temperature gauge

- (13) Engine coolant temperature caution lamp
- (14) Truck counter 1
- (15) Truck counter 2
- (16) Fuel gauge
- (17) Fuel level caution lamp
- (18) Fuel consumption gauge
- (19) Numeral keypad (0 to 9)
- (20) Engine oil temperature gauge
- (21) Engine oil temperature caution lamp
- (22) PTO oil temperature gauge
- (23) PTO oil temperature caution lamp
- (24) Engine oil pressure gauge
- (25) Engine oil pressure caution lamp
- (26) Seat belt caution lamp
- (27) Engine stop pilot lamp
- (28) Lock lever pilot lamp
- (29) Message display
- (30) Fan reverse rotation display
- (31) Auto-greasing operation pilot lamp/manual greasing operation pilot lamp
- (32) Wiper pilot lamp
- (33) Swing lock pilot lamp
- (34) Preheating pilot lamp
- (35) Auto-deceleration and automatic low idle pilot lamp
- (36) Working mode display
- (37) Radiator coolant level caution lamp
- (38) Engine oil level caution lamp
- (39) Air cleaner clogging caution lamp
- (40) Charge level caution lamp
- (41) Engine oil pressure caution lamp
- (42) Function switches (F1 to F6)
- (43) Maintenance time caution lamp

REMARK

The above figure does not show all of the caution lamp symbols.

Check of monitor

Category	Revision	Check item	At local assembly time	At ___ operating hours	Criterion								
Work equipment performance		<p>Work equipment running in: Engine at high idle (Note: Lower boom cylinder to ground level) Pressurization: Relieve each port for 2 minutes and give shock 20 times (excluding boom lower operation).</p> <p>Work equipment posture P+ mode</p>   											
		<p>Work equipment speed (Including cushion working time)</p> <p>Boom</p> <table border="0"> <tr> <td>Raise</td> <td>sec</td> <td>Lower</td> <td>sec</td> </tr> <tr> <td>[</td> <td>]</td> <td>[</td> <td>]</td> </tr> </table>	Raise	sec	Lower	sec	[]	[]			<p>Raise: 7.0 ± 0.7 sec Lower: 5.3 ± 0.5 sec</p>
	Raise	sec	Lower	sec									
	[]	[]									
		<p>P mode Engine: Full throttle 8.7 m boom 3.9 m arm 12 m³ bucket</p> <p>Arm</p> <table border="0"> <tr> <td>In</td> <td>sec</td> <td>Out</td> <td>sec</td> </tr> <tr> <td>[</td> <td>]</td> <td>[</td> <td>]</td> </tr> </table>	In	sec	Out	sec	[]	[]			<p>In: 7.5 ± 0.8 sec Out: 5.0 ± 0.5 sec</p>
	In	sec	Out	sec									
	[]	[]									
		<p>Bucket</p> <table border="0"> <tr> <td>Curl</td> <td>sec</td> <td>Dump</td> <td>sec</td> </tr> <tr> <td>[</td> <td>]</td> <td>[</td> <td>]</td> </tr> </table>	Curl	sec	Dump	sec	[]	[]			<p>Curl: 5.0 ± 0.5 sec Dump: 3.9 ± 0.4 sec</p>
	Curl	sec	Dump	sec									
	[]	[]									
		<p>Work equipment time lag</p> <p>Boom</p> <table border="0"> <tr> <td>Lower</td> <td>sec</td> </tr> <tr> <td>[</td> <td>]</td> </tr> </table>	Lower	sec	[]			<p>Max. 6.0 sec</p>				
	Lower	sec											
	[]											
		<p>Engine: Low When normal: Sensory When abnormal: Measure</p> <p>Arm</p> <table border="0"> <tr> <td>In</td> <td>sec</td> </tr> <tr> <td>[</td> <td>]</td> </tr> </table>	In	sec	[]			<p>Max. 5.0 sec</p>				
	In	sec											
[]												
	<p>Bucket</p> <table border="0"> <tr> <td>Dump</td> <td>sec</td> </tr> <tr> <td>[</td> <td>]</td> </tr> </table>	Dump	sec	[]			<p>Max. 4.0 sec</p>					
Dump	sec												
[]												
		Abnormal sound from hydraulic pump and PTO			Must be free from abnormality during no-load operation and when relieved.								
		Heating of PTO			Must be free from abnormal heating.								
		Partial engine output performance			Engine must not hunt in any gear speed during no-load operation and must not stall when hydraulic circuit is relieved at low idle.								
		Fine control performance			Work equipment must operate smoothly.								
		Machine push-up operation (including machine push-up function)			Boom, arm and bucket must not escape.								
		Abnormal sound or creak from work equipment			Must not be detected.								
		Shock at cylinder stroke end (Shock at boom raise and arm in stroke ends)			Cushion must work sufficiently.								
		Function of accumulator			Immediately after engine is stopped, with key switch ON, boom cylinder must be retracted from extension stroke end to ground level (when arm is at max. reach).								

CLICK HERE TO **DOWNLOAD** THE COMPLETE MANUAL

- Thank you very much for reading the preview of the manual.
- You can download the complete manual from: www.heydownloads.com by clicking the link below



- Please note: If there is no response to CLICKING the link, please download this PDF first and then click on it.

CLICK HERE TO **DOWNLOAD** THE COMPLETE MANUAL