

Field Assembly Instruction

DUMP TRUCK

HD465-8
HD605-8

SERIAL NUMBERS HD465-30001 and up
 HD605-30001

CLICK HERE TO **DOWNLOAD** THE COMPLETE MANUAL

- Thank you very much for reading the preview of the manual.
- You can download the complete manual from: www.heydownloads.com by clicking the link below



- Please note: If there is no response to CLICKING the link, please download this PDF first and then click on it.

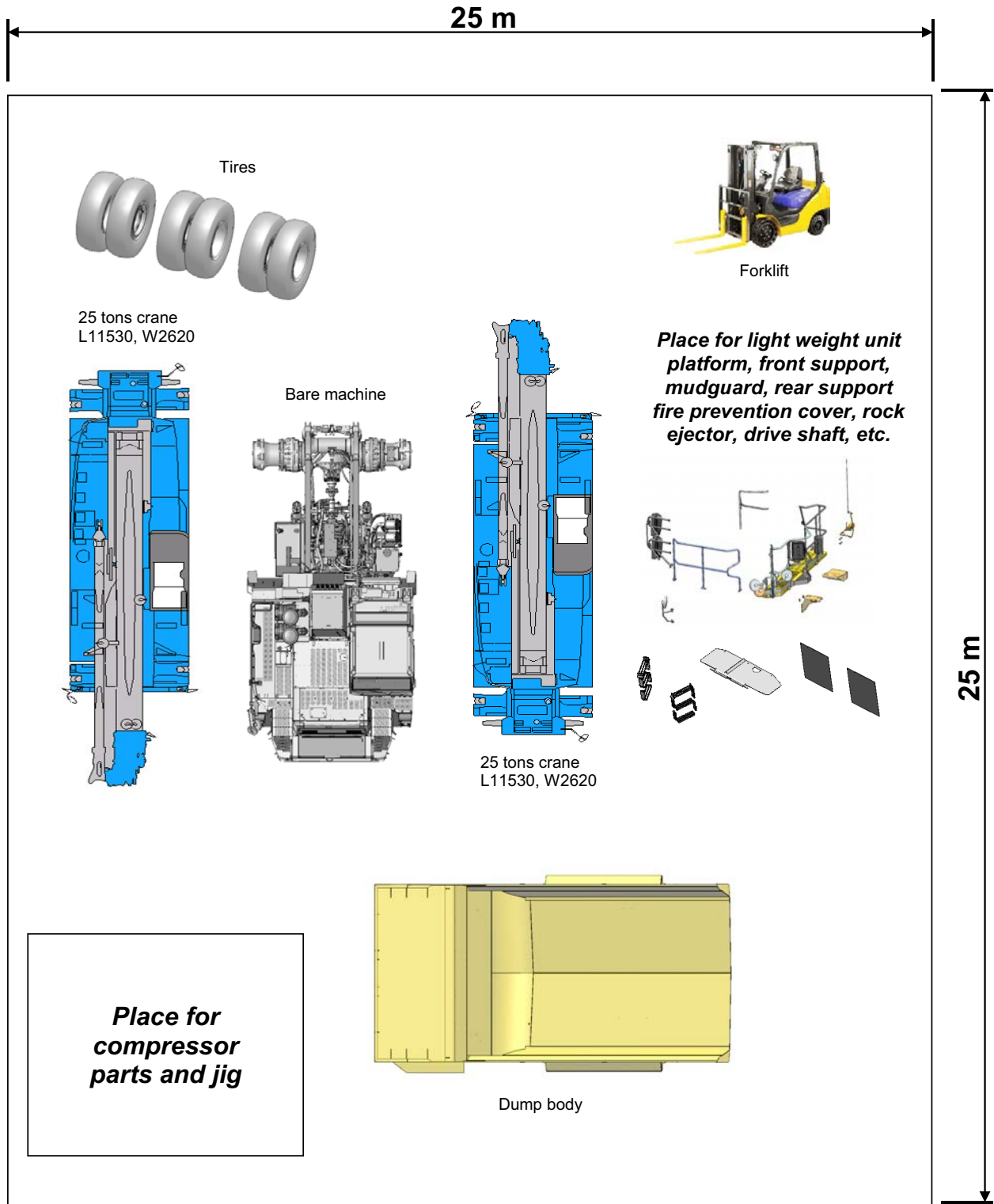
CLICK HERE TO **DOWNLOAD** THE COMPLETE MANUAL

3-2

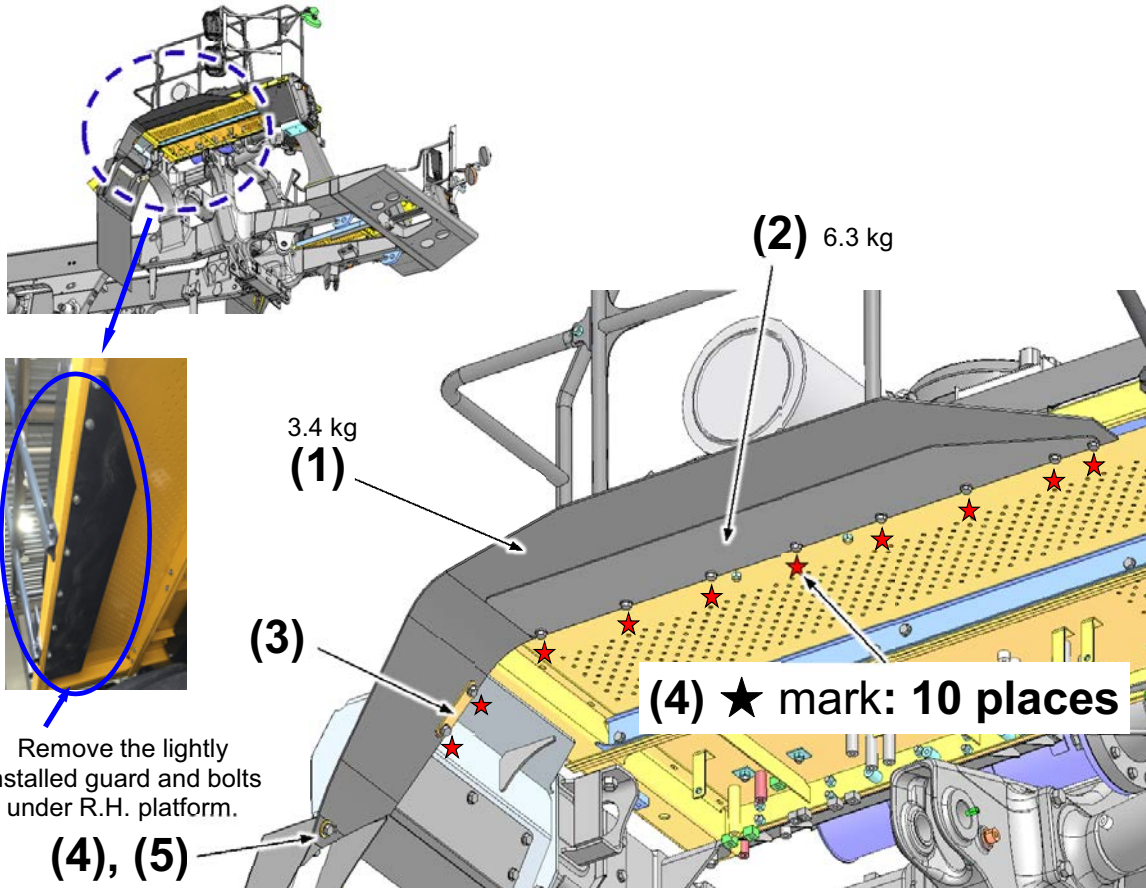
Layout of work space, Sales code: 7HC62

(The larger the work space, the better the workability.
Work space of at least 25 m x 25 m as shown in the figure below is required.)

Caution: For work space, select a level place where no puddle is formed.



Installation of R.H. platform mudguard

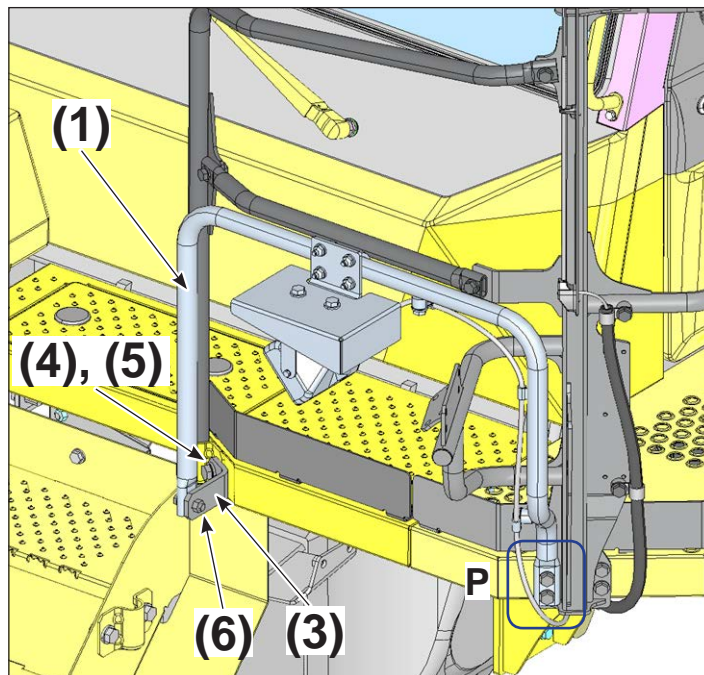
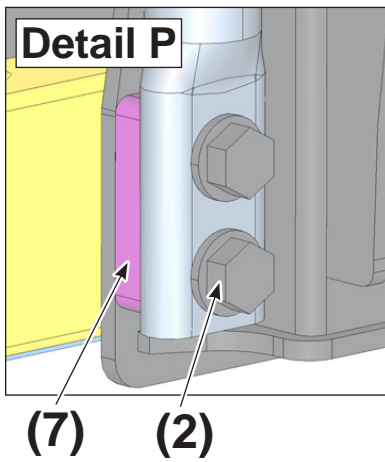
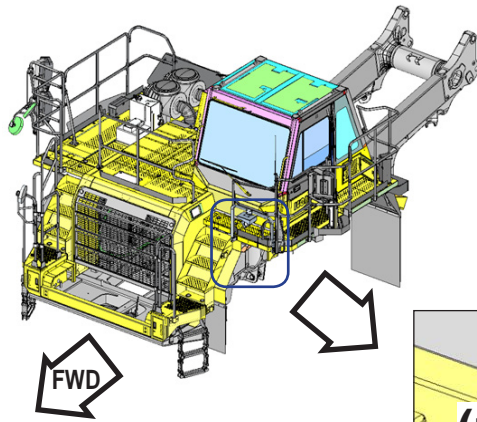


1. Remove the mounting bolts from platform, and install the guard.

	Part No.	Part name	Q'ty	State of parts
(1)	569548M592	GUARD	1	Shipping as a single part (L15700-F9)
(2)	569548N621XC	PLATE	1	Install lightly to platform (L15700-F9)
(3)	2835411470XC	PLATE	1	Install lightly to platform (L15700-F9)
(4)	0102481235	BOLT, SEMS	11	Install lightly to platform (L15700-F9)
(5)	1245426540	WASHER	1	Install lightly to platform (L15700-F9)

Precautions	Special tools		Facility to be used	
	Name	Q'ty	Name	Q'ty
	Impact wrench	1	Stepladder	1
	Socket (19 mm)	1		
	Others			

Install handrail with lighting lamp



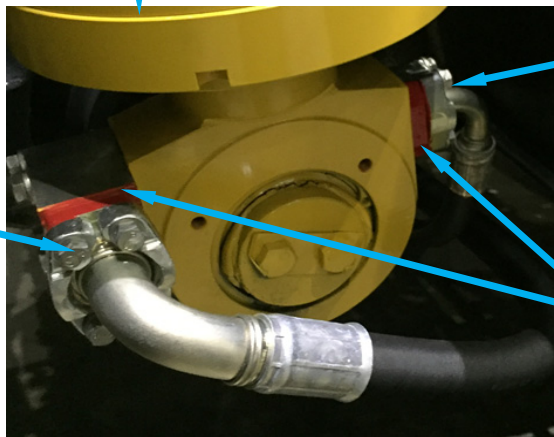
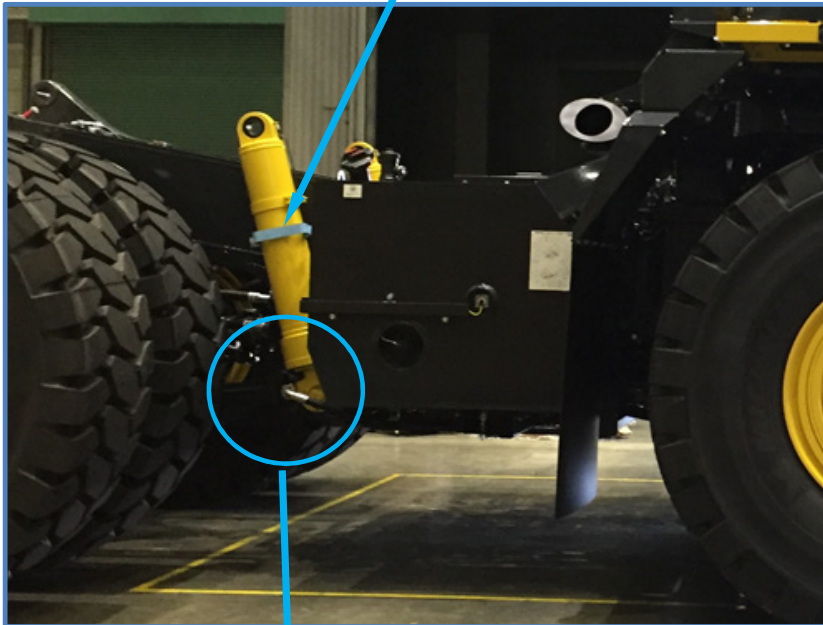
* Mounting bolts are removed and installed with (2)

No.	Part No.	Part name	Q'ty	Part state
(1)	569068M26A	STAY ASSY	1	Loose supply
(2)	01024D1260	BOLT	2	Loose supply
(3)	569068M280XC	BRACKET	1	Loose supply
(4)	01010D1650	BOLT	1	Installed to chassis
(5)	0164371645	WASHER	1	Installed to chassis
(6)	01024D1245	BOLT,SEMS	1	Loose supply
(7)	569068M270XC	PLATE	1	Loose supply

Precautions

Special tools		Facility to be used	
Name	Q'ty	Name	Q'ty
Impact wrench		Crane	
Socket of various sizes		Sling	
		Stepstool	
		Work platform truck	
Others Sales code 6HB71			

Removal of fixing jig



Replace

(1)

(2), (3)

Replace

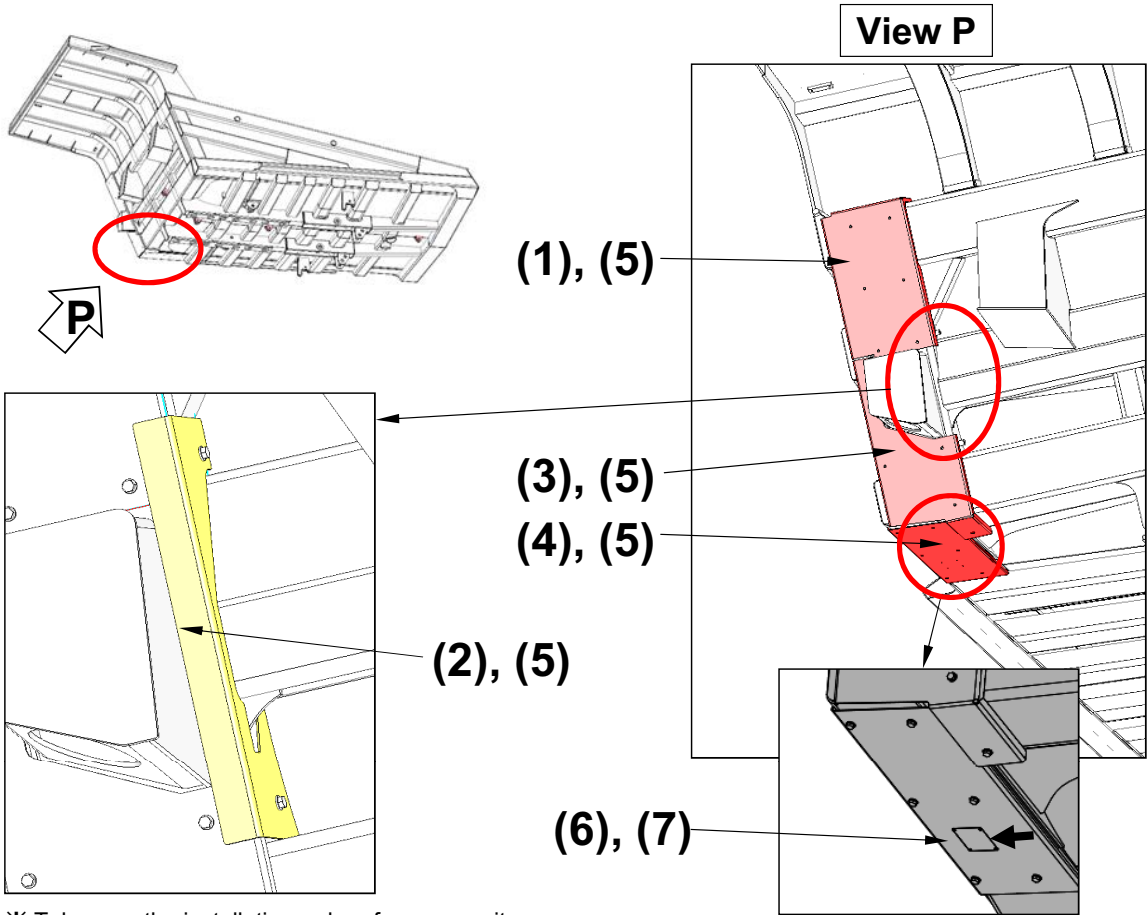
Remove the plate.

*** Same procedure on right and left**

	Part No.	Part name	Q'ty	State of parts
(1)	0737521035	BOLT,SEMS	8	Shipping as a single part (X50060-F9)
(2)	0101080830	BOLT	8	Shipping as a single part (X50060-F9)
(3)	0164350823	WASHER	8	Shipping as a single part (X50060-F9)

Precautions

	Special tools		Facility to be used	
	Name	Q'ty	Name	Q'ty
	Impact wrench			
	Wrench			
	Others			



※ Take care the installation order of covers on it.

Direction of arrow is the upside of decal.

	Part No.	Part name	Q'ty	State of parts
(1)	569748L511	COVER	1	Shipping as a single part (X50010-F9)
(2)	569748L521	COVER	1	Shipping as a single part (X50010-F9)
(3)	569748L531	COVER	1	Shipping as a single part (X50010-F9)
(4)	569748L342	COVER	1	Shipping as a single part (X50010-F9)
(5)	0102481225	BOLT	19	Shipping as a single part (X50010-F9)
(6)	09817A1103	PLATE, SAFETY	1	Shipping as a single part (X50010-F9)
(7)	0137000406	SCREW	4	Shipping as a single part (X50010-F9)

Precautions	Special tools		Facility to be used	
	Name	Q'ty	Name	Q'ty
	Others When using 4HCCC-A dump body heating HD465-8			

CLICK HERE TO **DOWNLOAD** THE COMPLETE MANUAL

- Thank you very much for reading the preview of the manual.
- You can download the complete manual from: www.heydownloads.com by clicking the link below



- Please note: If there is no response to CLICKING the link, please download this PDF first and then click on it.

CLICK HERE TO **DOWNLOAD** THE COMPLETE MANUAL