

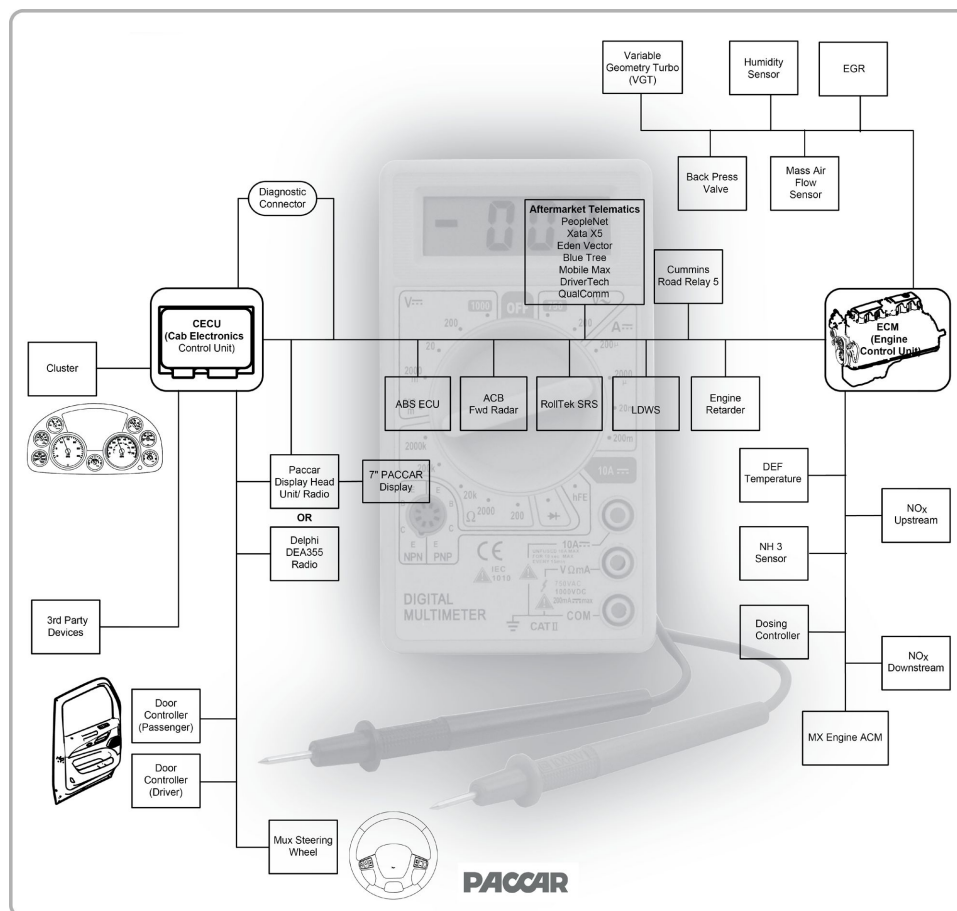
PACCAR

SERVICE

MANUAL

Section	Multiplexed Electrical System Service Manual
Number	PM819024
Date	10/22/2012

Multiplex Electrical System Service Manual: Model 587 2013 Emissions Level Engines



CLICK HERE TO **DOWNLOAD** THE COMPLETE MANUAL

- Thank you very much for reading the preview of the manual.
- You can download the complete manual from: www.heydownloads.com by clicking the link below



- Please note: If there is no response to CLICKING the link, please download this PDF first and then click on it.

CLICK HERE TO **DOWNLOAD** THE COMPLETE MANUAL

3 Exploded View

Control Unit Location 3 - 2

7 Specifications

Parameter Part Numbers. 7 - 2

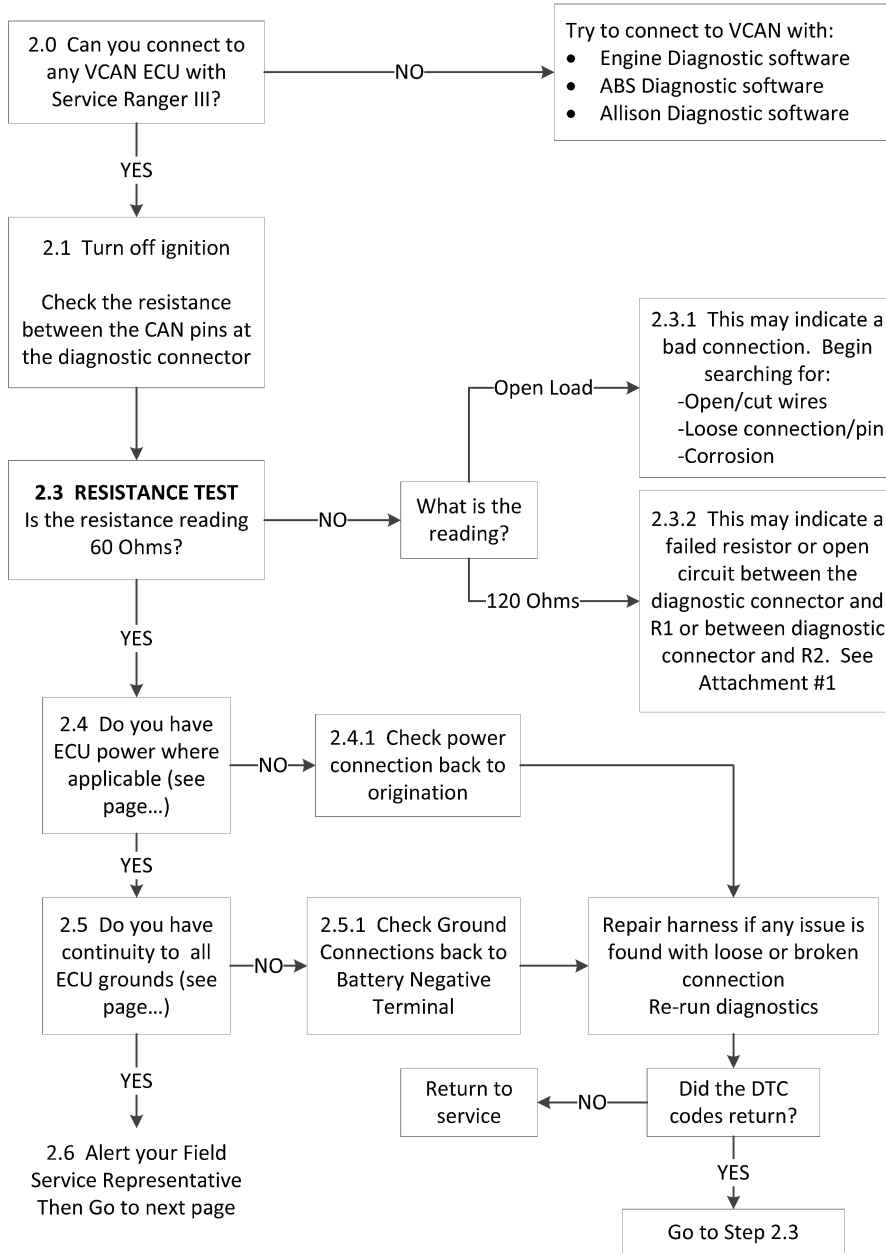
CECU Parameter Part Number	Parameter Description	Min. Value	Max. Value	Explanation
Q30-1024-113	Gateway Engine EEC2 Message	0	64	Parameter controls the settings for this individual message. Add the numbers together for multiple destinations. Value 0; OFF Value 1; B-CAN Value 2; C-CAN Value 4; D-CAN Value 8; F-CAN Value 16; I-CAN Value 32; V-CAN
Q30-1024-114	Gateway Engine ET1 Message	0	64	Parameter controls the settings for this individual message. Add the numbers together for multiple destinations. Value 0; OFF Value 1; B-CAN Value 2; C-CAN Value 4; D-CAN Value 8; F-CAN Value 16; I-CAN Value 32; V-CAN
Q30-1024-115	Gateway Engine IC1 Message	0	64	Parameter controls the settings for this individual message. Add the numbers together for multiple destinations. Value 0; OFF Value 1; B-CAN Value 2; C-CAN Value 4; D-CAN Value 8; F-CAN Value 16; I-CAN Value 32; V-CAN
Q30-1024-116	Gateway Engine LFE Message	0	64	Parameter controls the settings for this individual message. Add the numbers together for multiple destinations. Value 0; OFF Value 1; B-CAN Value 2; C-CAN Value 4; D-CAN Value 8; F-CAN Value 16; I-CAN Value 32; V-CAN
Q30-1024-118	Gateway Transmission ETC1 Message	0	64	Parameter controls the settings for this individual message. Add the numbers together for multiple destinations. Value 0; OFF Value 1; B-CAN Value 2; C-CAN Value 4; D-CAN Value 8; F-CAN Value 16; I-CAN Value 32; V-CAN

8 How It Works

Cab Electronic Control Unit (CECU) . . .	8 - 2
Display Diagnostic Codes	8 - 3

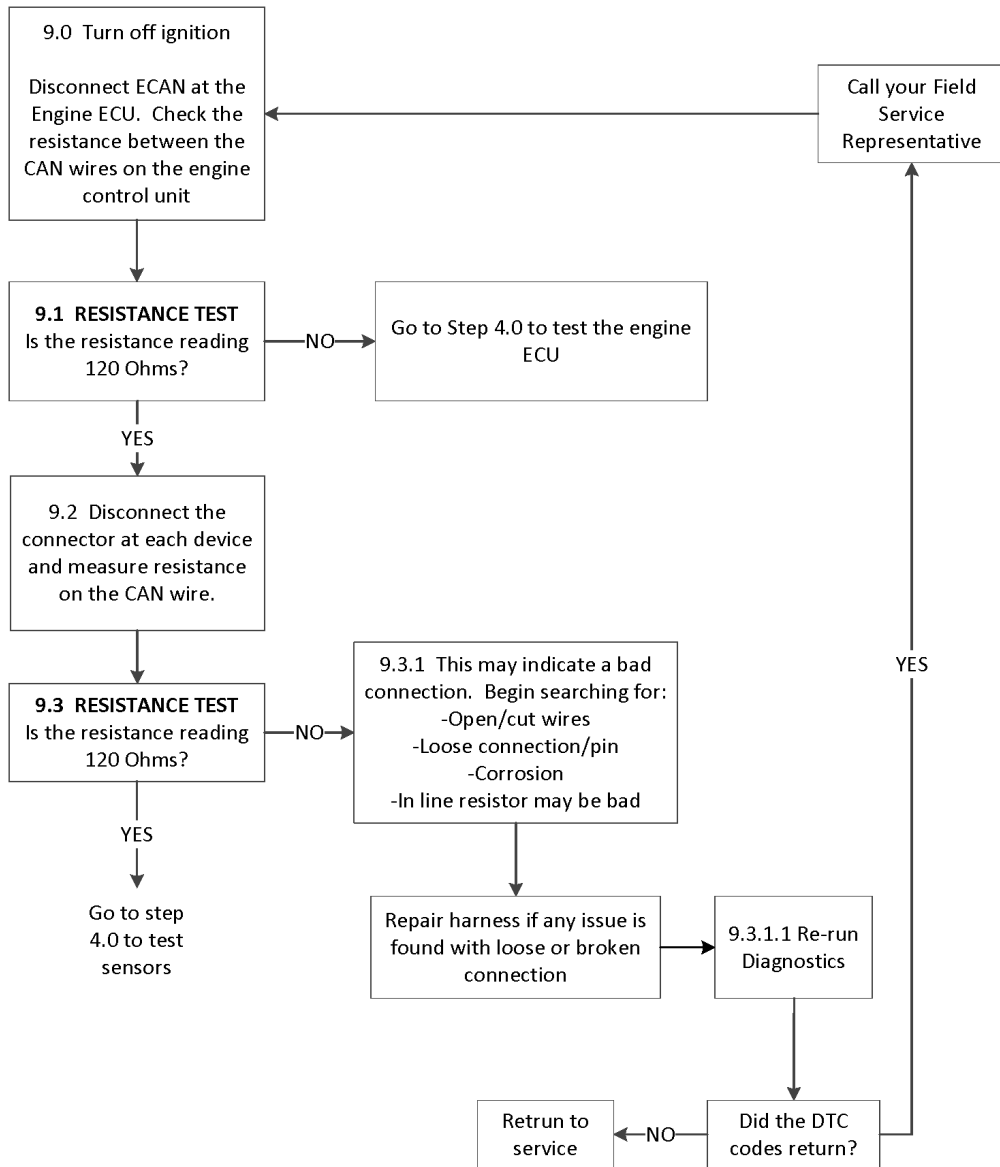
DTC	Item / System	Description	Detailed Description
9003	PTO Oil Temp	Open in PTO oil temp circuit	This DTC will be recorded when the control unit sees an open at the PTO oil temperature sensor input. Some possible causes for this are a broken wire, corroded or disconnected connector, or sensor failure.
9004	PTO Oil Temp	Short in PTO oil temp circuit	This DTC will be recorded when the control unit sees a short to ground at the PTO oil temperature sensor input. Some possible causes for this are a pinched wire, water in a connector, or sensor failure.
9109	Accelerator Pedal Position Message	Accelerator pedal position message missing	This DTC will be recorded when the control unit does not see the Accelerator Pedal Position Speed message from the engine, or when the message has timed out. Some possible causes for this include faulty data link wiring to the engine controller, incorrect engine programming or a faulty engine controller.
10703	Air Filter Restriction	Open in air filter restriction circuit	This DTC will be recorded when the control unit sees an open at the air filter restriction sensor input. Some possible causes for this are a broken wire, corroded or disconnected connector, or sensor failure.
10704	Air Filter Restriction	Short in air filter restriction circuit	This DTC will be recorded when the control unit sees a short to +5V at the air filter restriction sensor input. Some possible causes for this are a pinched wire, water in a connector, or sensor failure.
11603	Application Air Pressure	Open in application air pressure circuit	This DTC will be recorded when the control unit sees an open or short to ground at the tractor brake application air pressure sensor input. Some possible causes for this are a broken wire, corroded or disconnected connector, or sensor failure.
11604	Application Air Pressure	Short in application air pressure circuit	This DTC will be recorded when the control unit sees a short to +5V at the tractor brake application air pressure sensor input. Some possible causes for this are a pinched wire, water in a connector, or sensor failure.
11703	Primary Air Pressure	Open in primary air pressure circuit	This DTC will be recorded when the control unit sees an open or short to ground at the primary air pressure sensor input. Some possible causes for this are a broken wire, corroded or disconnected connector, or sensor failure.
11704	Primary Air Pressure	Short in primary air pressure circuit	This DTC will be recorded when the control unit sees a short to +5V at the primary air pressure sensor input. Some possible causes for this are a pinched wire, water in a connector, or sensor failure.
11803	Secondary Air Pressure	Open in secondary air pressure circuit	This DTC will be recorded when the control unit sees an open or short to ground at the secondary air pressure sensor input. Some possible causes for this are a broken wire, corroded or disconnected connector, or sensor failure.
11804	Secondary Air Pressure	Short in secondary air pressure circuit	This DTC will be recorded when the control unit sees a short to +5V at the secondary air pressure sensor input. Some possible causes for this are a pinched wire, water in a connector, or sensor failure.
15802	Ignition Power	Ignition Power is in an indeterminate state	This DTC will be recorded when the control unit sees between 33% and 66% of battery voltage on the ignition pin. A possible cause for this is faulty ignition sense wiring. The ignition sense wire comes from the power distribution box to the control unit behind the cup holder. This sense wire is also used for other control units such as the door modules and cluster. The wiring to those control units may be the issue.

Diagnosing the VCAN Trunk



Diagnosing the ACAN

(Vehicles with PACCAR MX engine)



CLICK HERE TO **DOWNLOAD** THE COMPLETE MANUAL

- Thank you very much for reading the preview of the manual.
- You can download the complete manual from: www.heydownloads.com by clicking the link below



- Please note: If there is no response to CLICKING the link, please download this PDF first and then click on it.

CLICK HERE TO **DOWNLOAD** THE COMPLETE MANUAL