
SERVICE MANUAL
ELECTRICAL DIAGRAMS
2013A
MAIN INDEX

Machine: T O P A X

A - WIRING DIAGRAMS

Designation	Valid from	Drawing nr.	Binder	Page
A		058600 B	1	10.2 - 10.3
A	1996w14-	059100 H	1	10.4 - 10.5
A	1999w17-	060300 D	1	2.2 - 2.3
A	2000w07-	060300 G	1	3.2 - 3.3

A - CIRCUIT DIAGRAM

A	1999w17-	060301 B	1	2.8 - 2.21
A	2001w20-	060301 D	1	5.2 - 5.15

A - WIRING DIAGRAM OPTIONS

A	1996w18-	060290 A	1	1.14 - 1.15
A	1998w11-	060408 A	1	1.16 - 1.21
A	2001w20-	060312 D	1	5.30 - 5.35

A - WIRING DIAGRAMS SPECIAL

A	2000w13-	035850 G	1	2.38 - 2.39
A	2001w20-	038562 B	1	5.48 - 5.49

A - Ergo - WIRING DIAGRAMS

A-Ergo	2002w49-	104100 D	1	9.4 - 9.5
A-Ergo	2003w45-	104100 E	2	1.66 - 1.67
A-Ergo	2004w09-	104100 F	2	3.4 - 3.5
A-Ergo	2006w07-	104100 G	2	5.2 - 5.5
A-Ergo	2008w18-	104100 H	2	8.2 - 8.5
A-Ergo	2009w27-	104100 I	2	10.2 - 10.5
A-Ergo	2009w45-	104100 J	2	11.36 - 11- 40

A-Ergo - CIRCUIT DIAGRAM

A-Ergo (-98)	2000w41-	035849 D	1	4.28 - 4.43
A-Ergo	2002w16-	104101 B	1	6.26 - 6.33
A-Ergo	2003w06-	104101 D	2	3.6 - 3.13
A-Ergo	2007w22-	104101 E	2	7.2 - 7.17

CLICK HERE TO **DOWNLOAD** THE COMPLETE MANUAL

- Thank you very much for reading the preview of the manual.
- You can download the complete manual from: www.heydownloads.com by clicking the link below



- Please note: If there is no response to CLICKING the link, please download this PDF first and then click on it.

CLICK HERE TO **DOWNLOAD** THE COMPLETE MANUAL

	4	5		6		
Rev.No	Plac	Revision note	CO-number	Changed by	Approved date	Approved by
F	C-1	Redrawn to ELSA, safety circuit added. Sheet 5/8.	018683	NRG	100302	JHN
E		Added dead mans hand proximity switch. side 4/B - 5/B	017063	KO	060330	SL
D	B-3	Resistor R3, R12 removed. Changed value C11. Side 4-5.	016692	KO	050311	KO

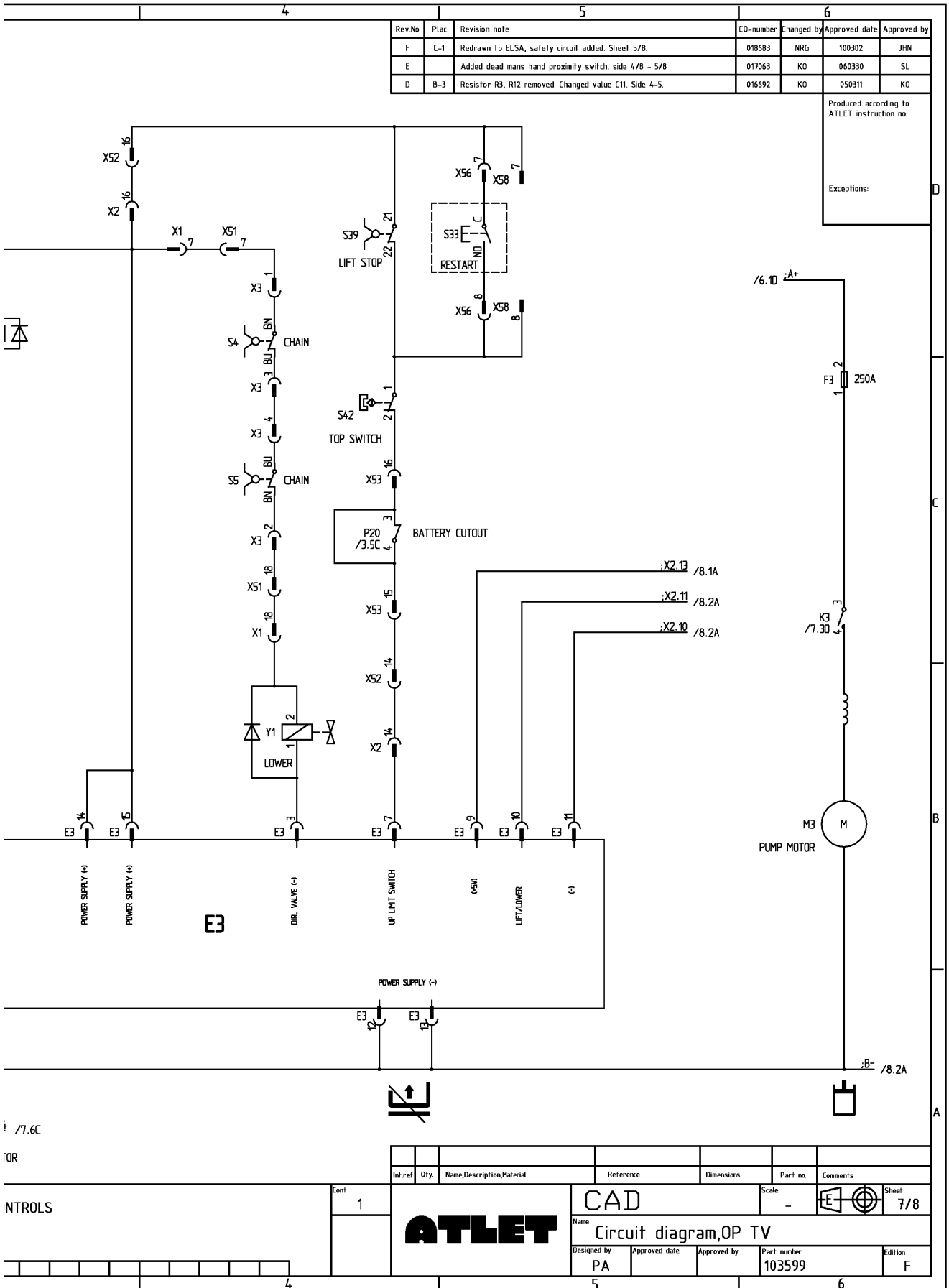
Produced according to ATLET instruction no:

Exceptions:

INNEHÅLL:

Blad	Beskrivning
1	Engelskt försättsblad
2	Svenskt försättsblad
3	Matningskretsar, nödstopp, instrument och broms
4	Styrsystem
5	Säkerhetskretsar och hastighetsreduktion
6	Drivmotor - kraft- och manöverkretsar
7	Hydraulikpump och ventiler
8	Plattform lyft och sänk, signalhorn, belysning och skenstyrning

Int.ref	Qty.	Name,Description,Material	Reference	Dimensions	Part no.	Comments
	3	ATLET	CAD		-	E1 Sheet 2/8
		Name				
		Circuit diagram,OP TV				
		Designed by	Approved date	Approved by	Part number	Edition
		PA			103599	F

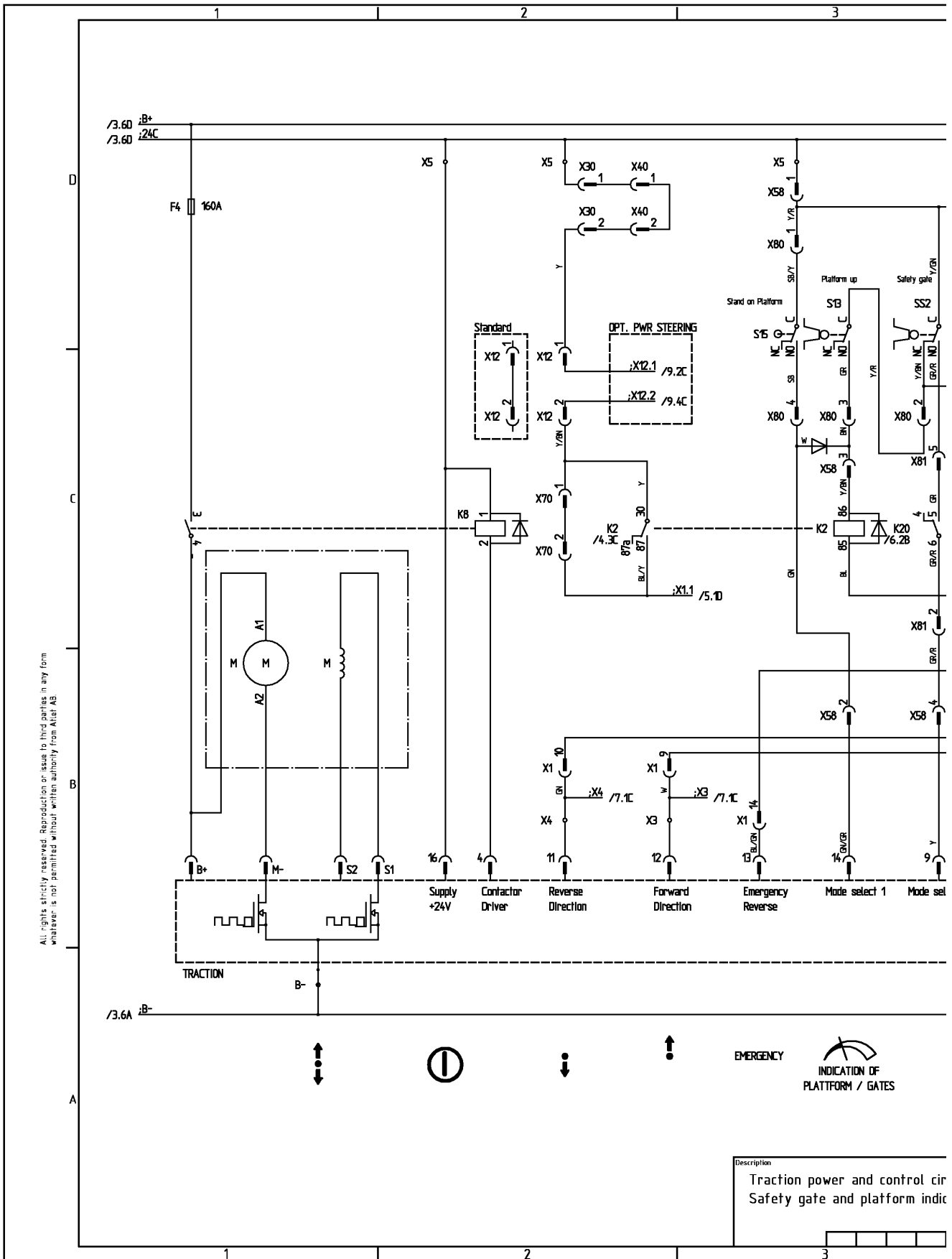


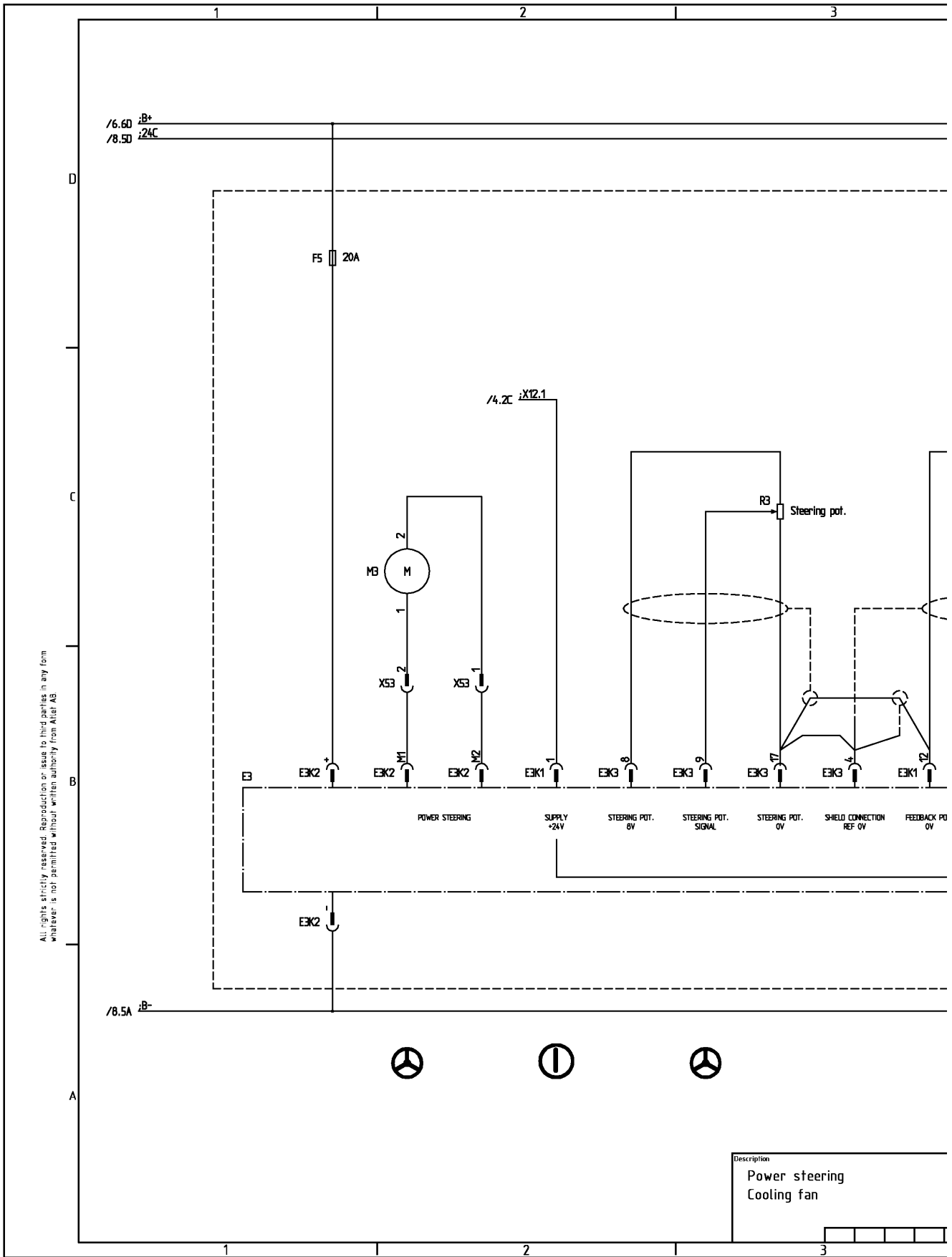
/7.6C

OR

NTROLS

Int.ref	Qty.	Name,Description,Material	Reference	Dimensions	Part no.	Comments
	1	ATLET CAD				Sheet 7/8
		ATLET		Name: Circuit diagram,OP TV		
Designed by	Approved date	Approved by	Part number	Edition		
PA			103599	F		



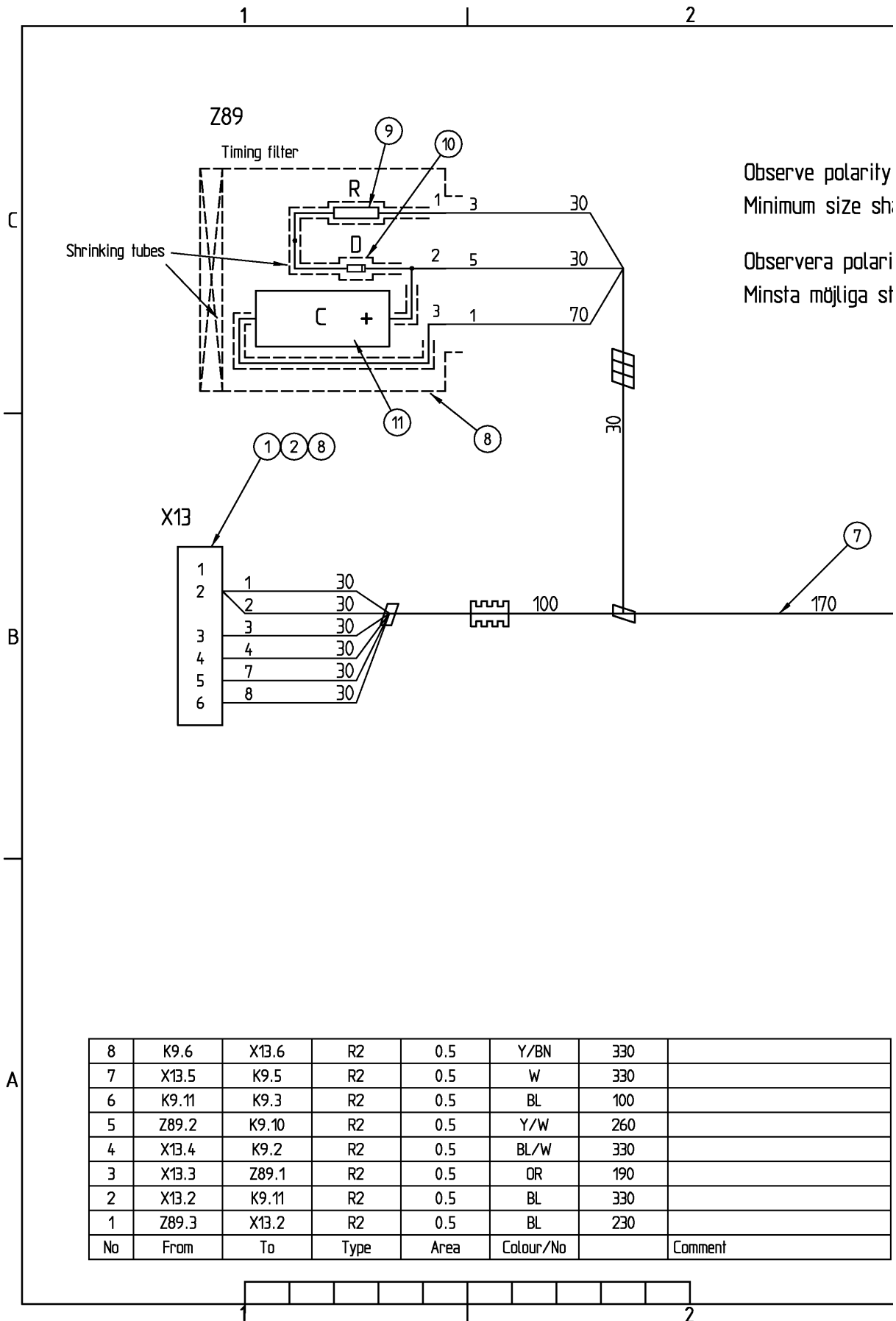


All rights strictly reserved. Reproduction or issue to third parties in any form whatever is not permitted without written authority from ATLET AB.

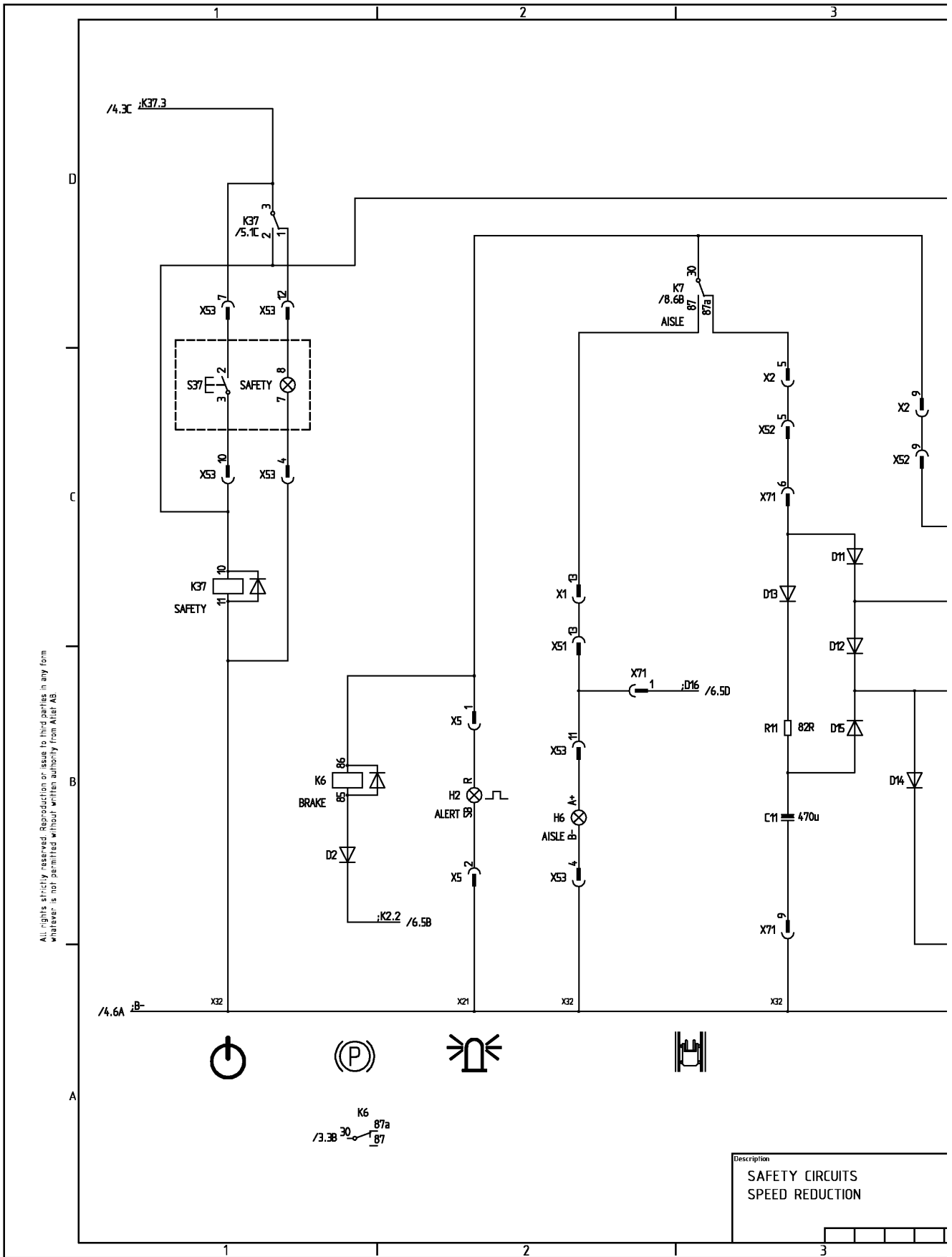
Description
Power steering
Cooling fan

TS, Timing filter
2011w48-

WIRING DIAGRAM
101350 A



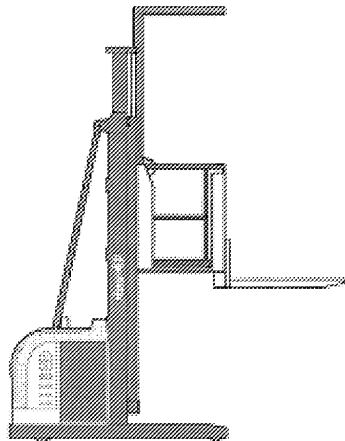
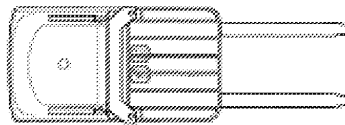
All rights strictly reserved. Reproduction or issue to third parties in any form whatever is not permitted without written authority from Atlet AB.



All rights strictly reserved. Reproduction or issue to third parties in any form whatever is not permitted without written authority from Atlat AB

DEFINITION AV NEUTRALLÄGE

Alla komponenter i detta schema är ritade i det tillstånd de befinner sig i när trucken är i sitt "neutralläge". Detta läge definieras av följande figur.



FRAMÅT ← → BAKÅT

- Ingen förare finns på trucken.
- Korgen och gafflarna befinner sig i lägsta möjliga position.
- Drivhjulet står i mittposition, dvs rakt framåt/bakåt-läge.

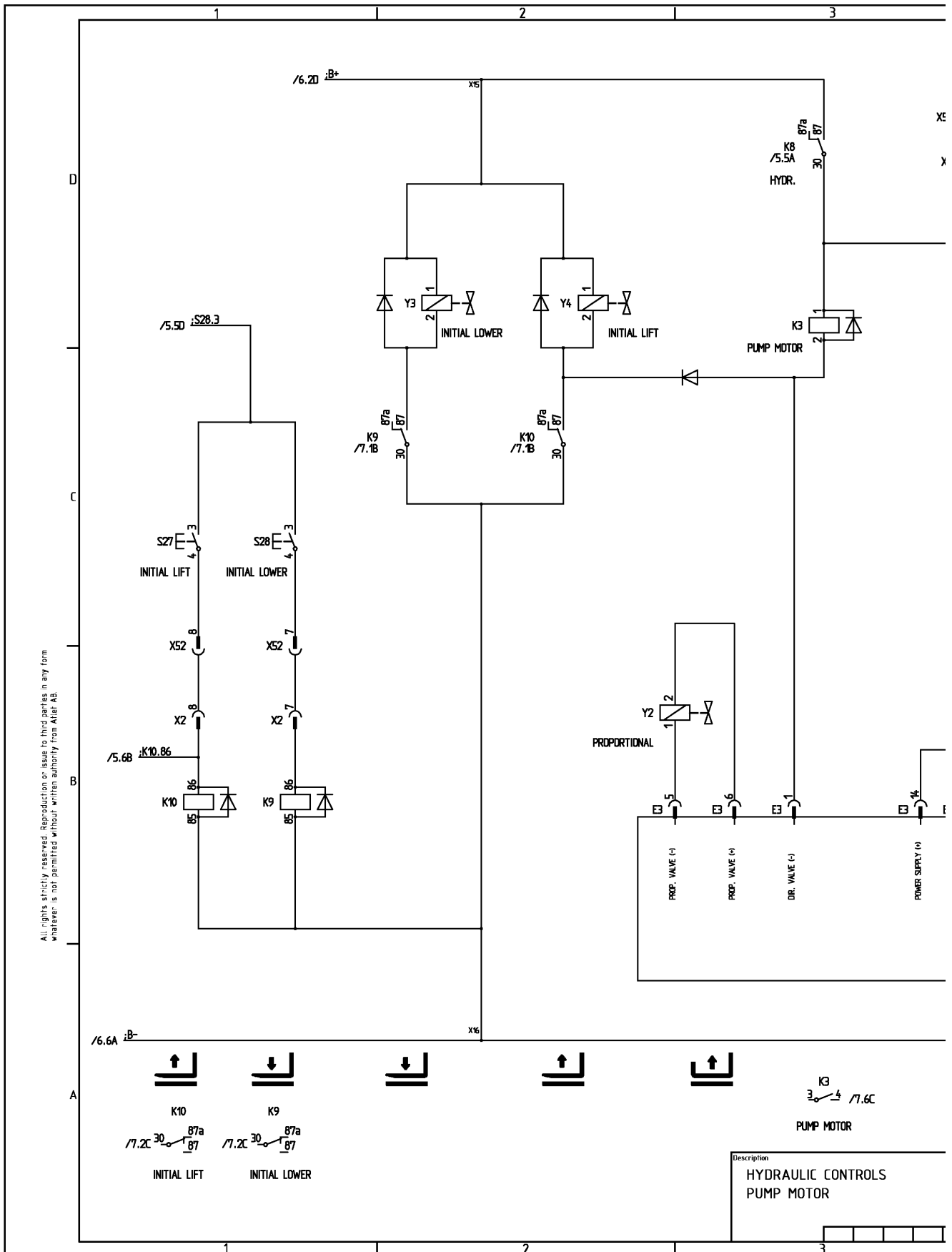
Detta medför att vissa brytare och elektromekaniska komponenter kan befinna sig i mekaniskt påverkat tillstånd. En mikrobrytare som vanligtvis ritas:



ritas här, om den är i sitt mekaniskt påverkade tillstånd, med en tilläggsymbol som representerar en kamprofil:



Description
INNEHÅLL DEFINITION AV NEUTRALLÄGE



CLICK HERE TO **DOWNLOAD** THE COMPLETE MANUAL

- Thank you very much for reading the preview of the manual.
- You can download the complete manual from: www.heydownloads.com by clicking the link below

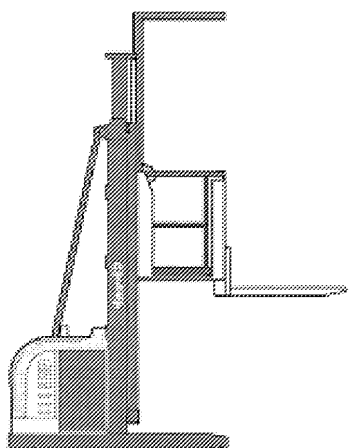


- Please note: If there is no response to CLICKING the link, please download this PDF first and then click on it.

CLICK HERE TO **DOWNLOAD** THE COMPLETE MANUAL

TRUCK-IN-NEUTRAL DEFINITION

All components in this diagram are shown in the state they have when the truck is in "neutral" position. This position is defined by the picture below.



FORWARD ← → REVERSE

- No driver is onboard the truck.
- The platform and the forks are in fully lowered position.
- The drive wheel is in straight forward position.

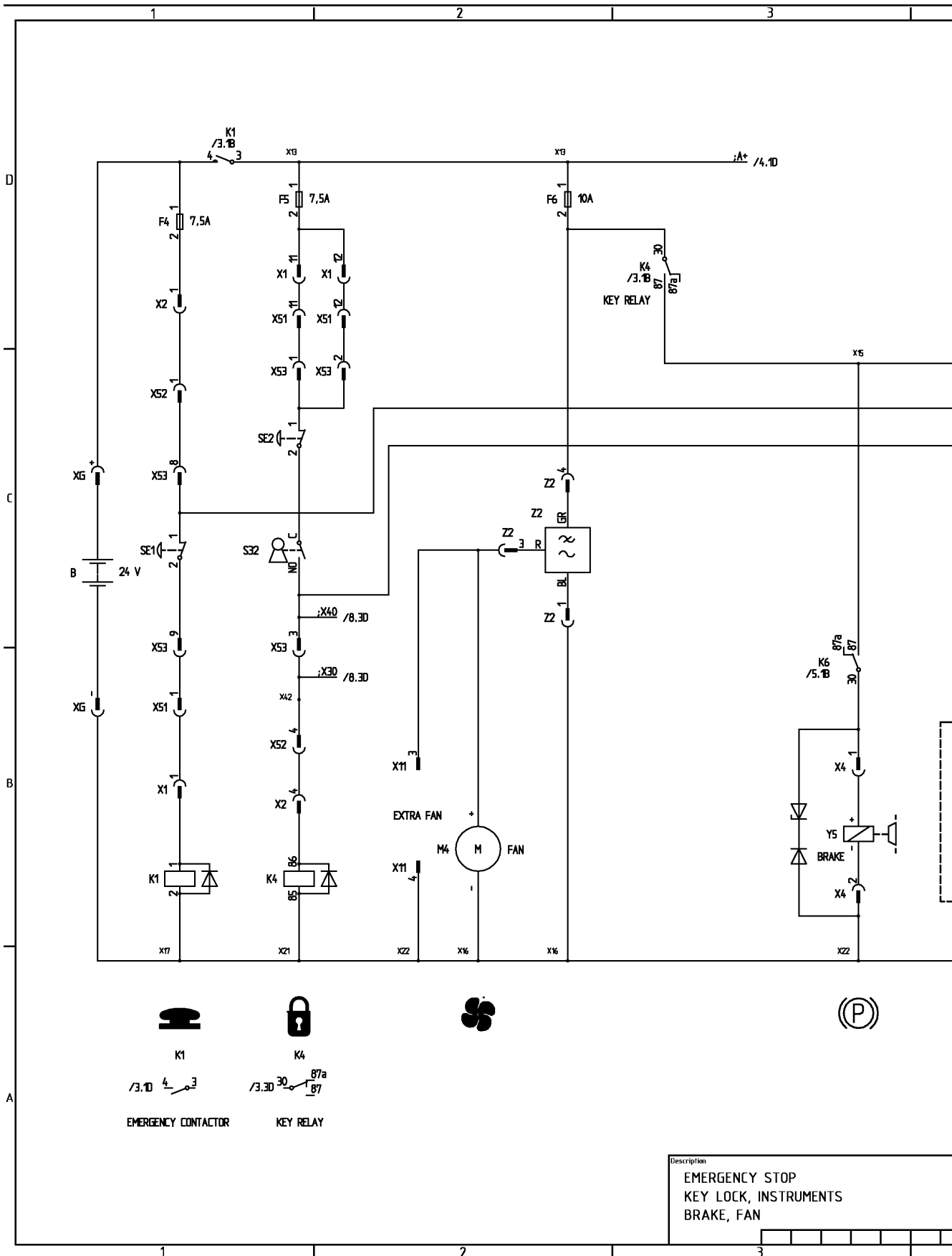
This means that some switches and electromechanical components may be mechanically engaged if a microswitch, normally drawn:

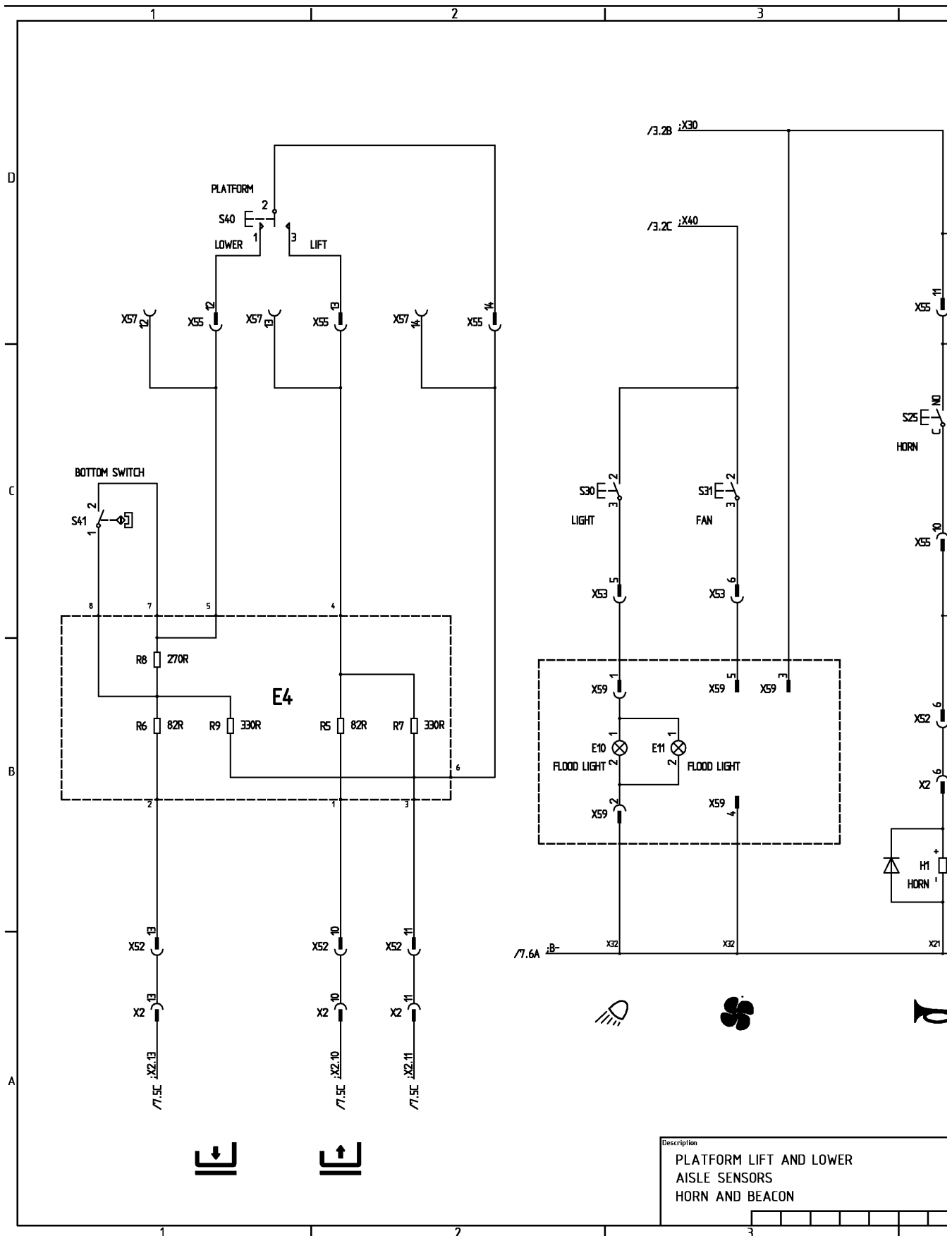


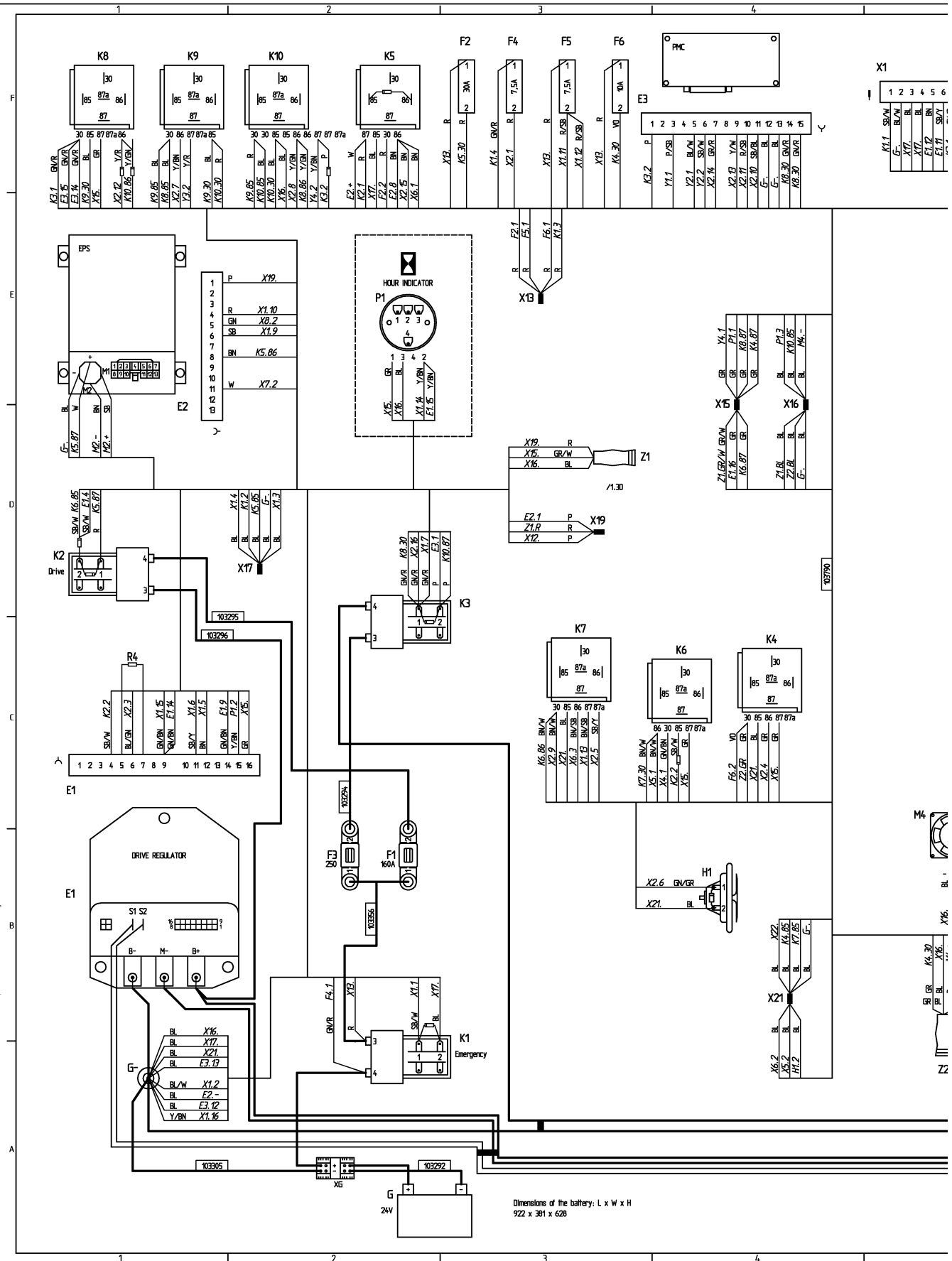
is in mechanically engaged position, it is in the diagram marked with an extra symbol element which represents the cam profile:



Description
CONTENTS
TRUCK IN NEUTRAL DEFINITION

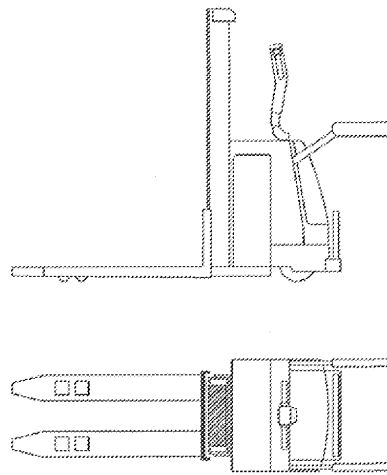






DEFINITION AV NEUTRALLÄGE

Alla komponenter i detta schema är ritade i det tillstånd de befinner sig i när trucken är i sitt "neutralläge". Detta läge definieras av följande figur.



- Ingen förare finns på trucken.
- Gafflarna befinner sig i lägsta möjliga och sidleds centrerad position.
- Styrhjulet befinner sig i mittposition, dvs rakt framåt/bakåt-läge.
- Skyddsgrindarna är uppfällda.

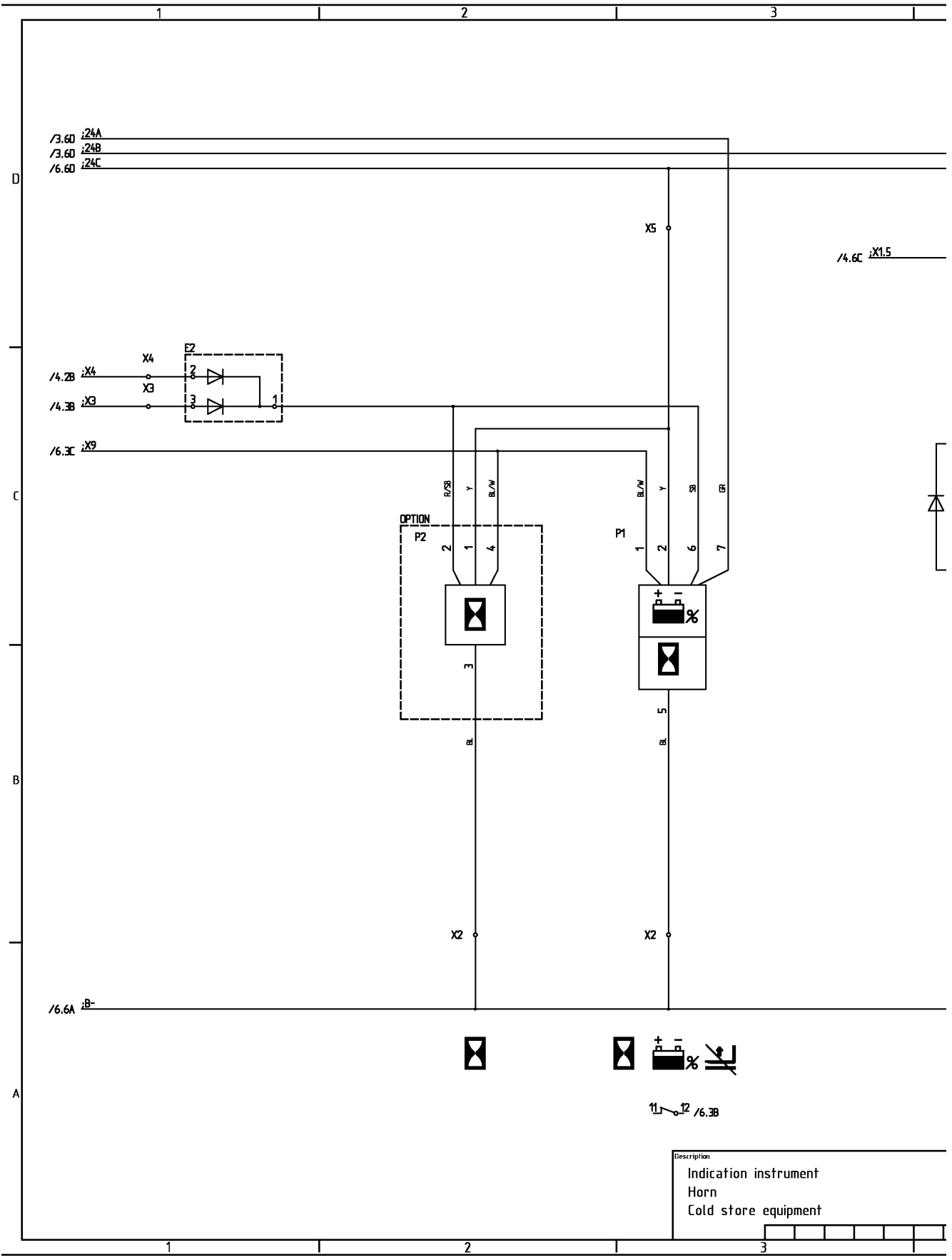
Detta medför att vissa brytare och elektromekaniska komponenter kan befinna sig i mekaniskt påverkat tillstånd. En mikrobrytare som vanligtvis ritas:



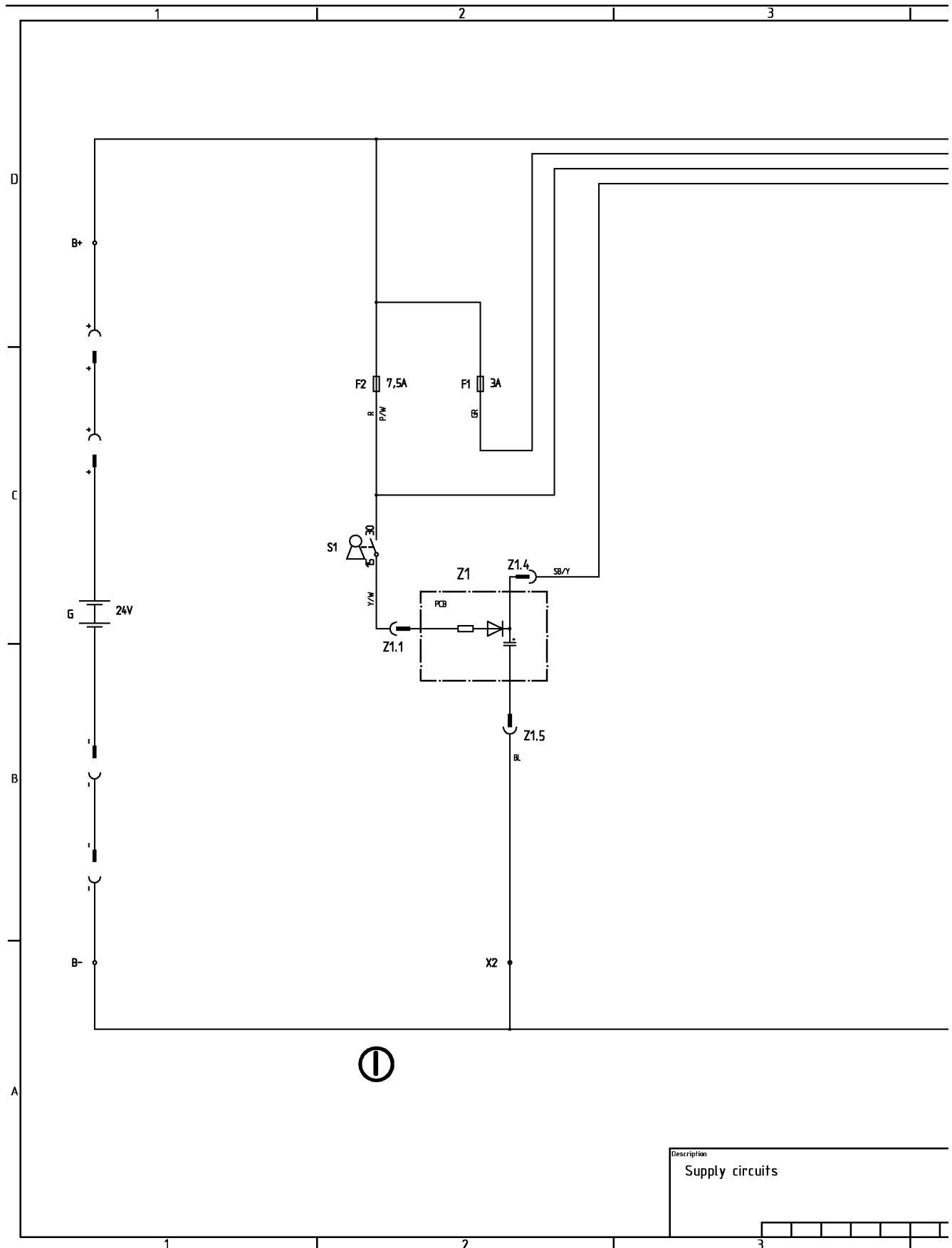
Ritas här, om den är i sitt mekaniskt påverkade tillstånd. Med en tillägs-symbol som representerar en kamprofil:



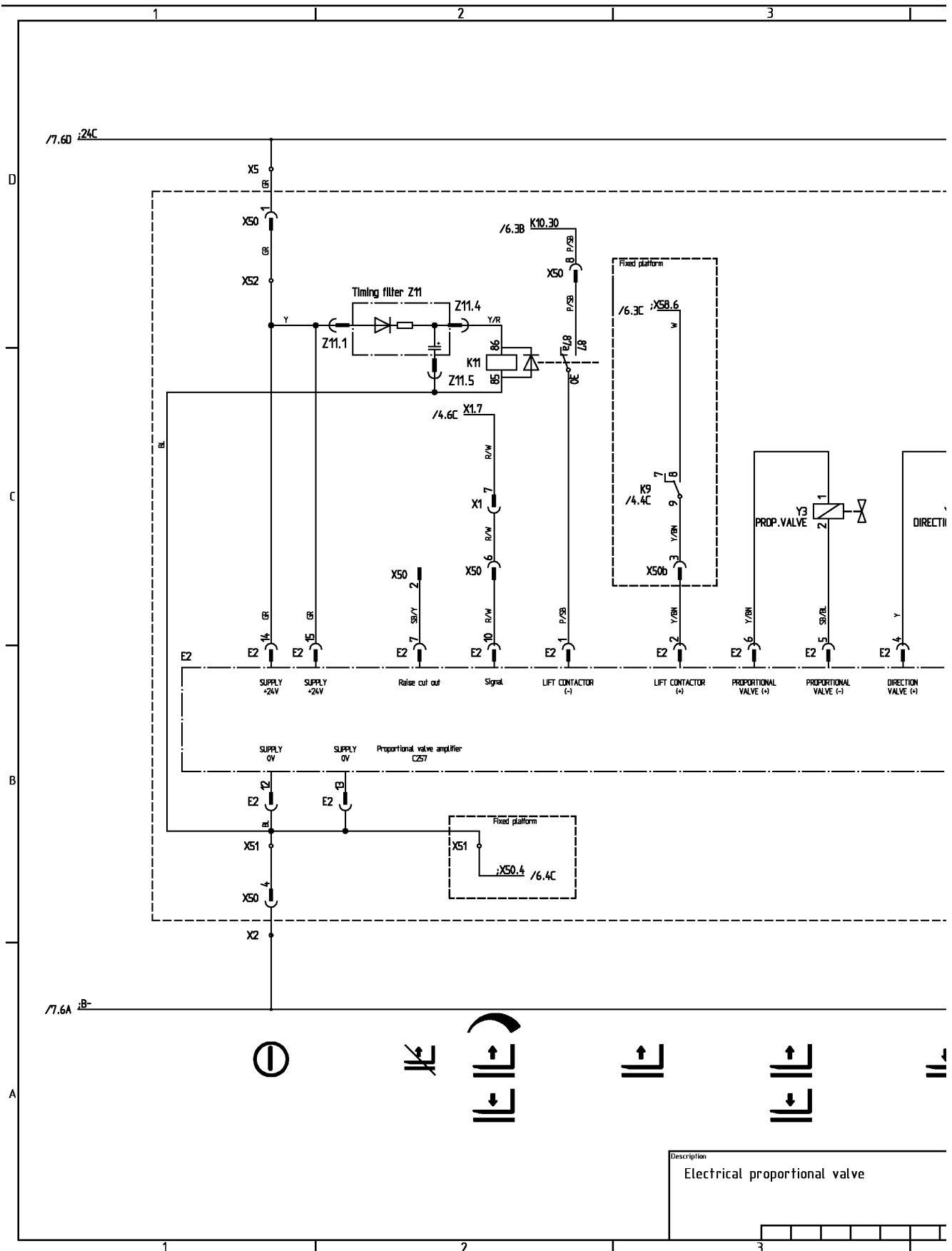
Description
Innehåll Defination av neutralläge



Description
Indication instrument
Horn
Cold store equipment

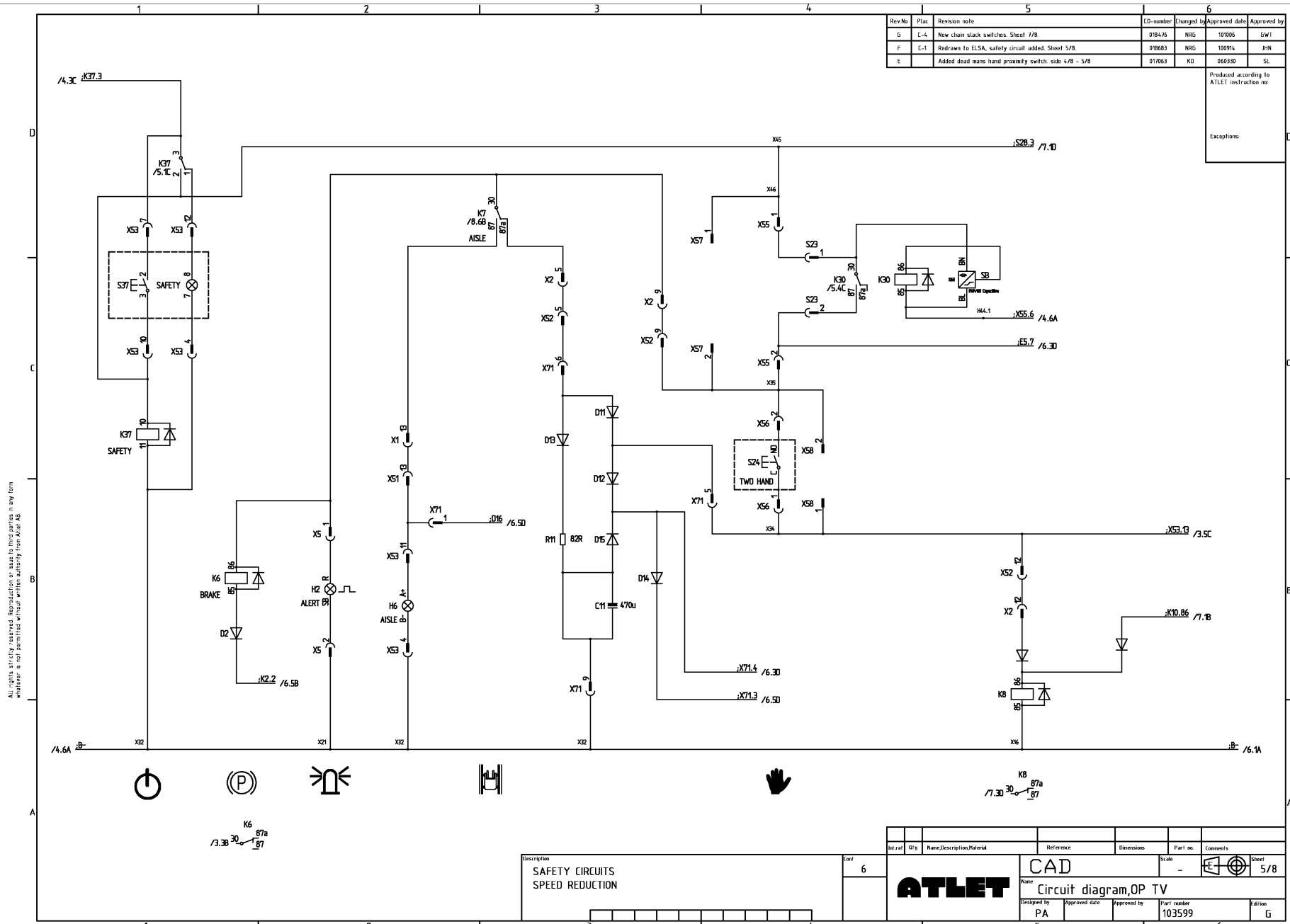


Description	
Supply circuits	

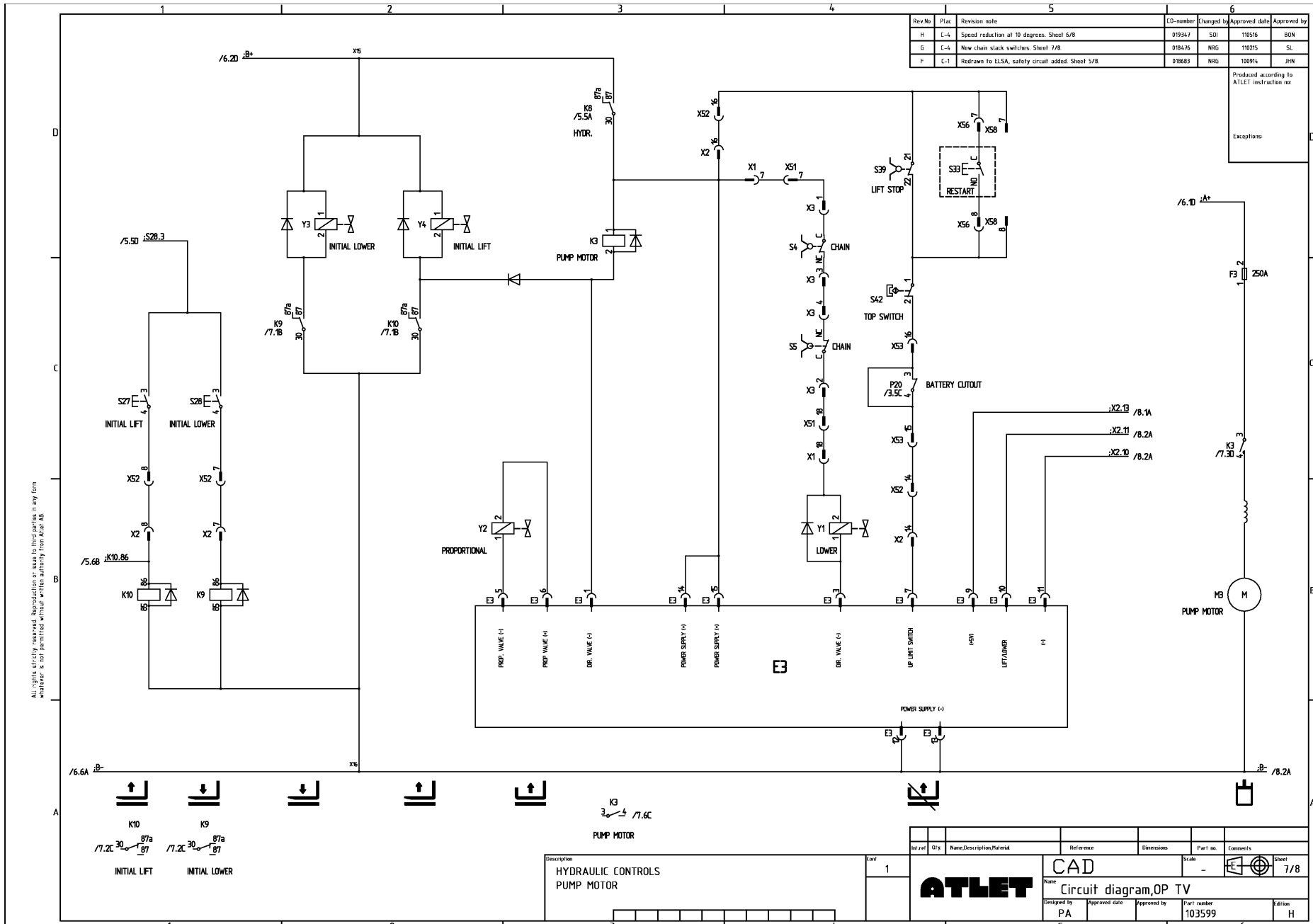


Description
Electrical proportional valve

OP TV, Circuit Diagram, 103599 G, 2011w18-



OP, TV, Circuit Diagram, 103599 H, 2011w40-



Rev.No	Plac	Revision note	CG-number	Changed by	Approved date	Approved by
H	L-4	Speed reduction at 10 degrees. Sheet 5/8	019347	SDI	110516	BDN
G	L-4	New chain slack switches. Sheet 7/8	019476	NRG	110215	SL
F	L-1	Redrawn to ELISA, safety circuit added Sheet 5/8	019683	NRG	100914	JHN

Produced according to ATLEI instruction no:
Exceptions:

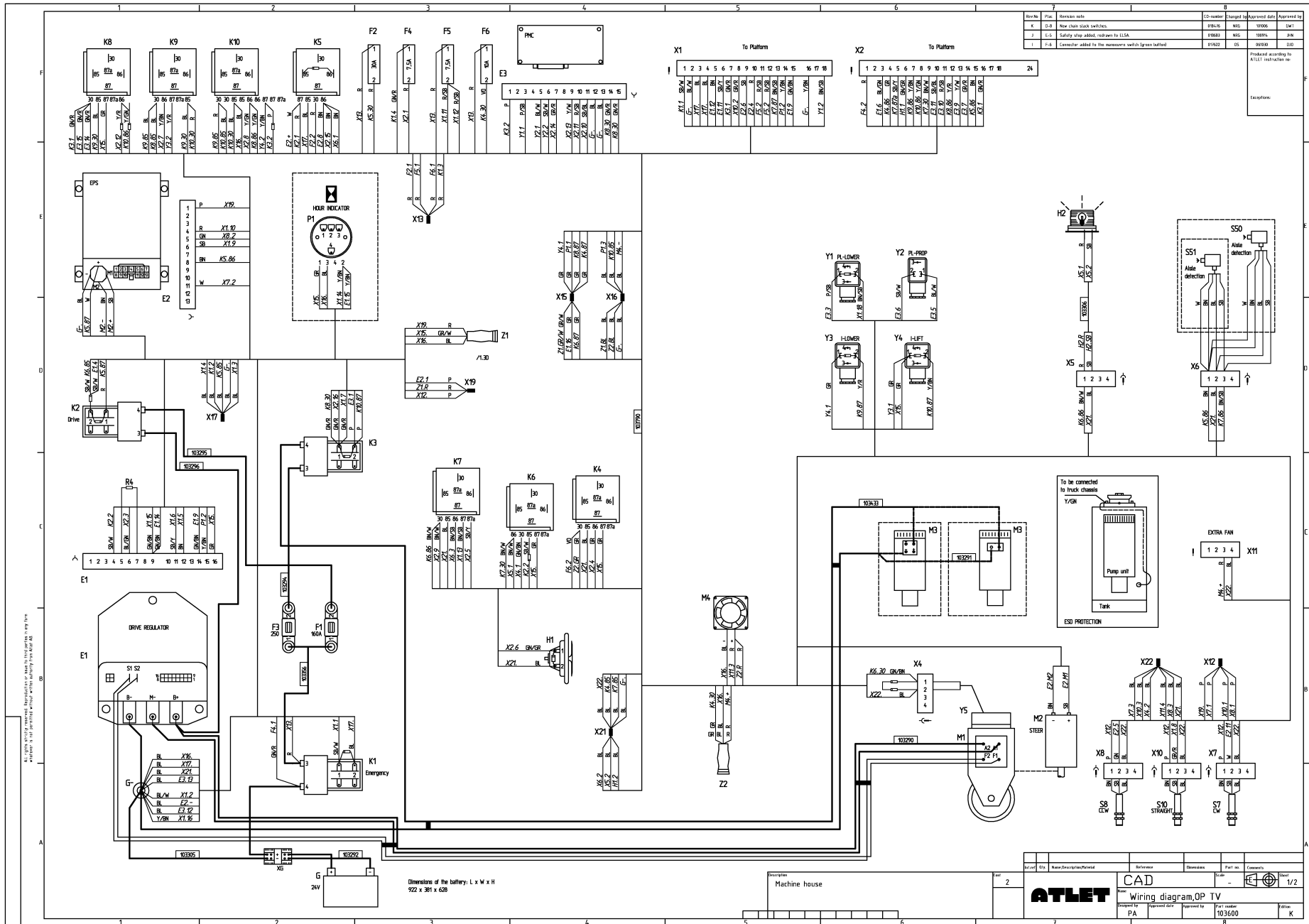
All rights strictly reserved. Reproduction or use in third parties in any form whatever is not permitted without written authority from Atlas AB.

Description	Unit
HYDRAULIC CONTROLS PUMP MOTOR	1

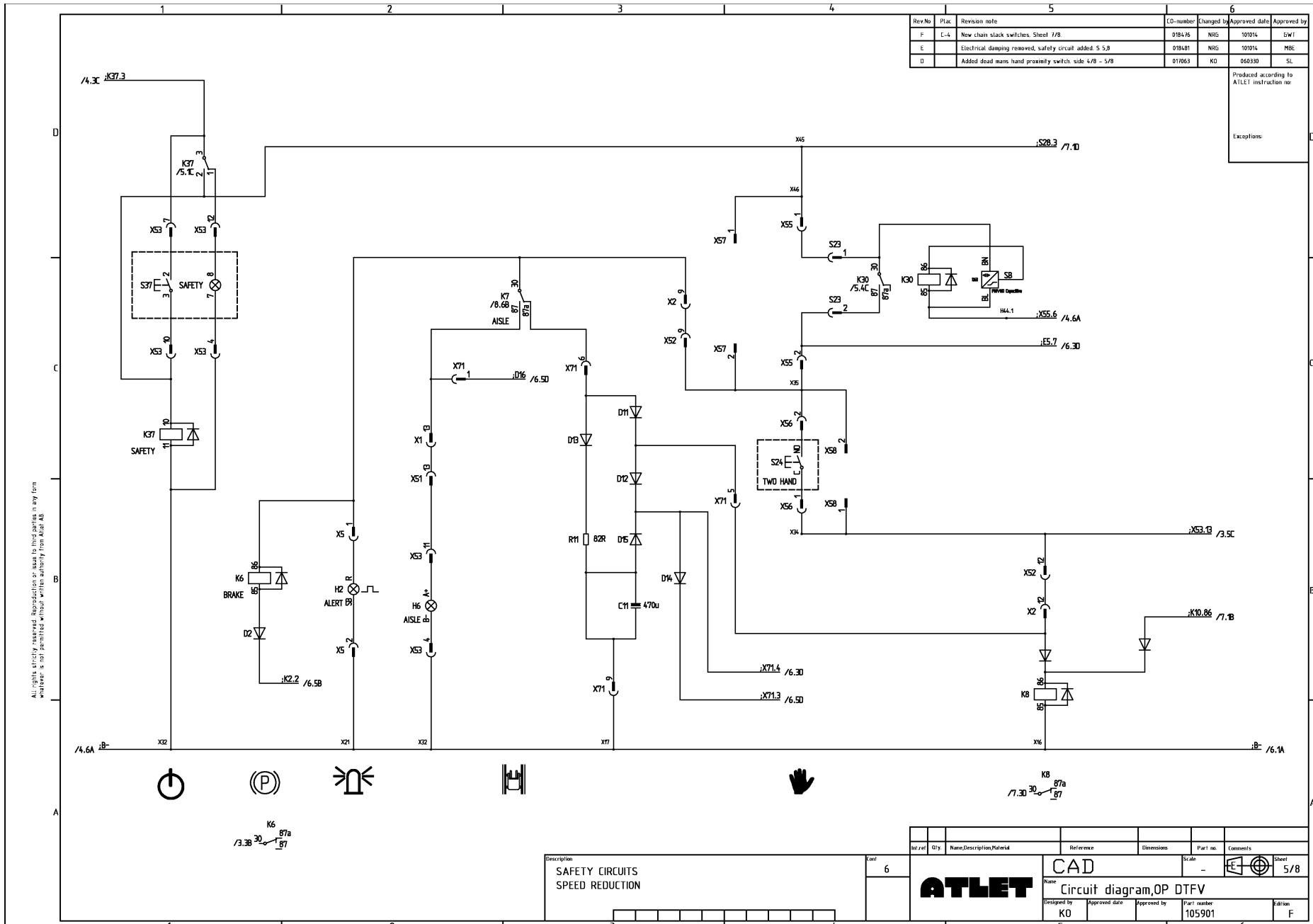
Ref. no.	Qty.	Name, Description, Material	Reference	Dimension	Part no.	Comments

ATLET CAD
 Name: Circuit diagram, OP TV
 Designed by: PA
 Approved date: []
 Approved by: []
 Part number: 103599
 Edition: H

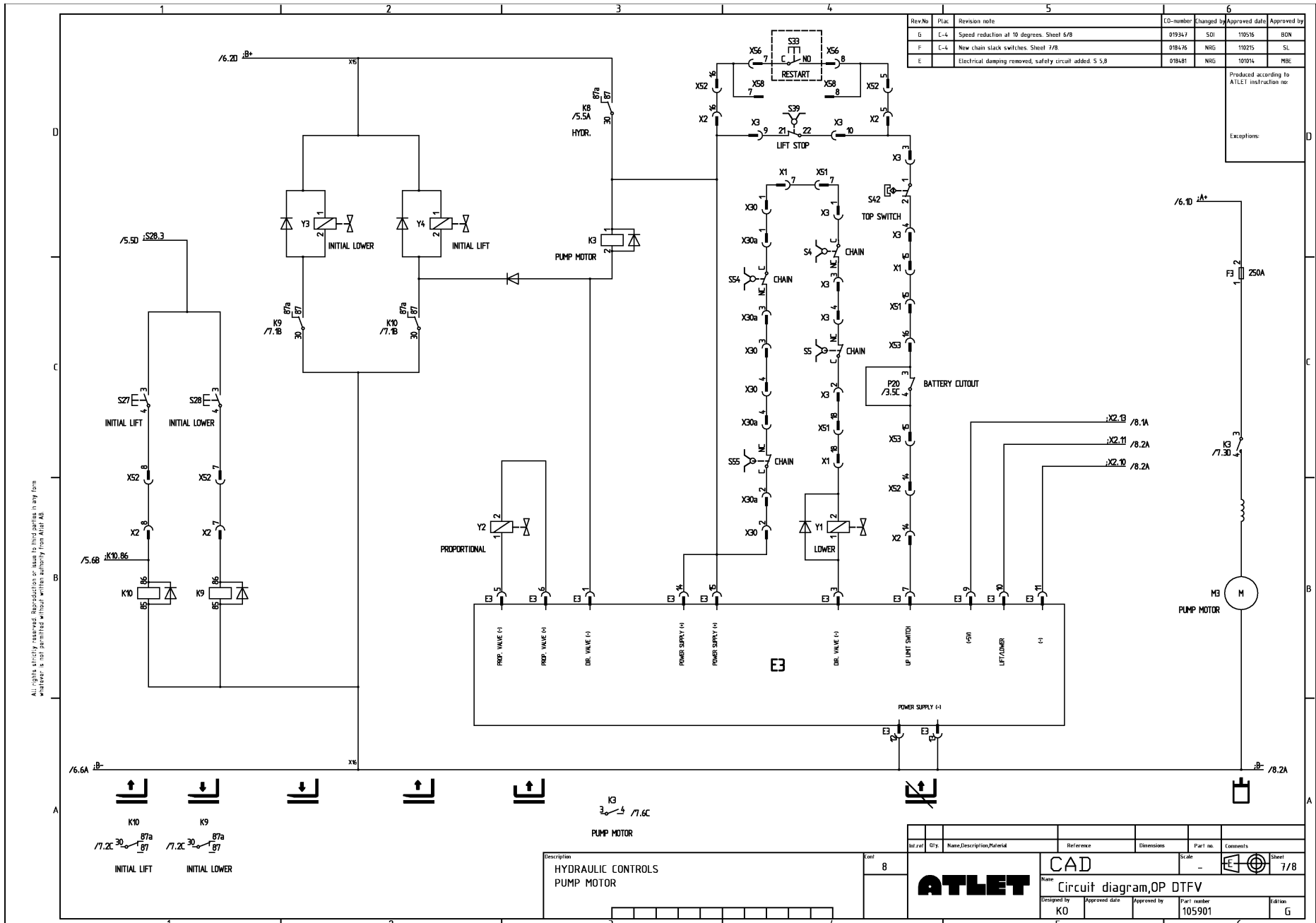
OP, TV, Wiring Diagram 103600 K, 2011w18-



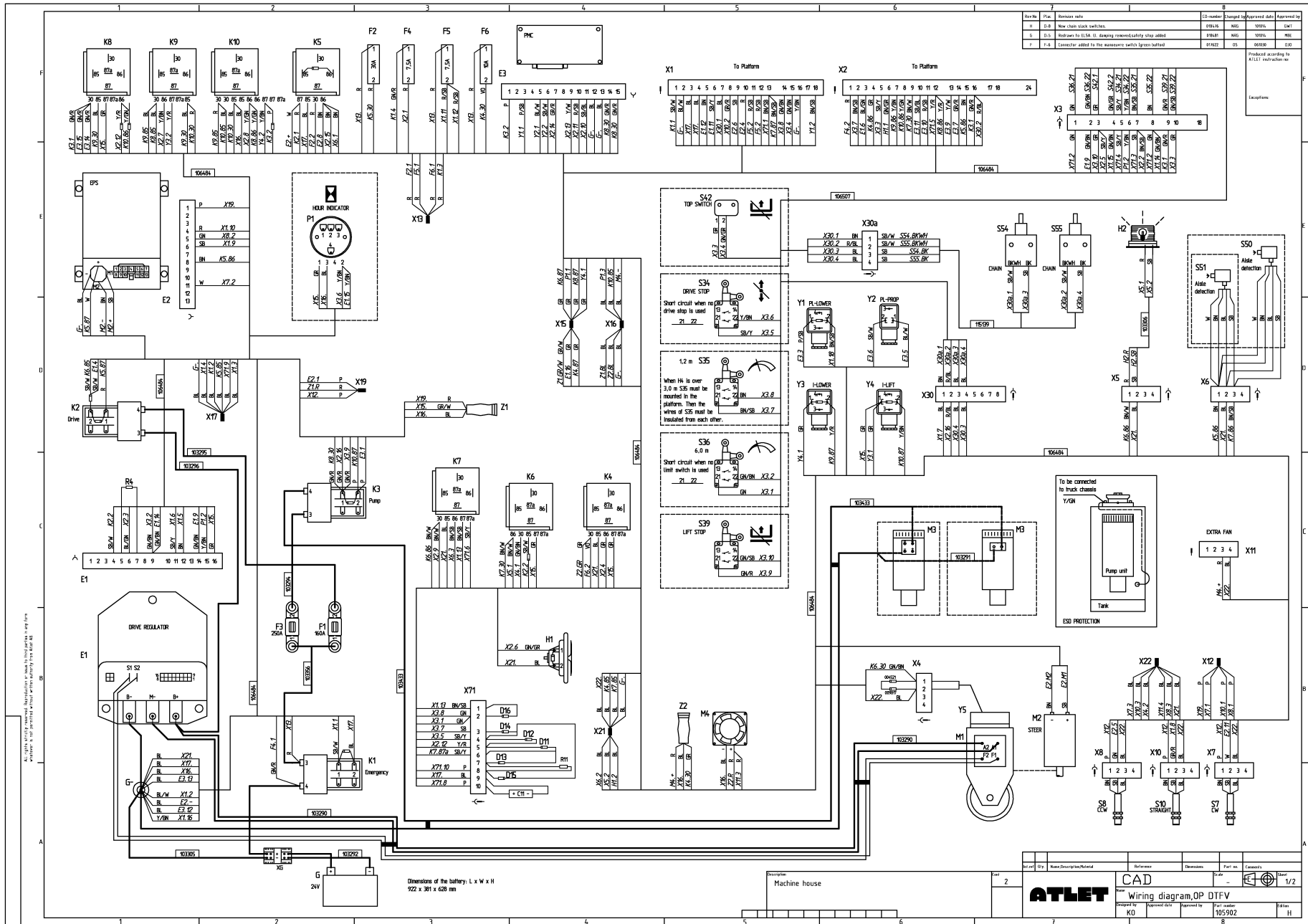
OP, DTFV, Circuit Diagram, 105901 F, 2011w18-



OP, DTFV, Circuit Diagram, 105901 G, 2011w40-



OP, DTFV, Wiring Diagram, 105902 H, 2011w18-



CLICK HERE TO **DOWNLOAD** THE COMPLETE MANUAL

- Thank you very much for reading the preview of the manual.
- You can download the complete manual from: www.heydownloads.com by clicking the link below



- Please note: If there is no response to CLICKING the link, please download this PDF first and then click on it.

CLICK HERE TO **DOWNLOAD** THE COMPLETE MANUAL