



## Electrical and hydraulic schematic views

OPX 20 / 25  
OPX 20 PLUS  
OPX 25 PLUS  
OPX-L 12  
OPX-L 16  
OPX-L 20  
OPX-L 20 S  
OPX-D 20  
LTX 50  
LTX-T06  
LTX-FF 05 / 10

-



0615 0617 1075 1076 1077 1078  
1079 1080 1081 1082 1084 1085  
1086

45878026004 EN - 02/2019

first in intralogistics



CLICK HERE TO **DOWNLOAD** THE COMPLETE MANUAL

- Thank you very much for reading the preview of the manual.
- You can download the complete manual from: [www.heydownloads.com](http://www.heydownloads.com) by clicking the link below



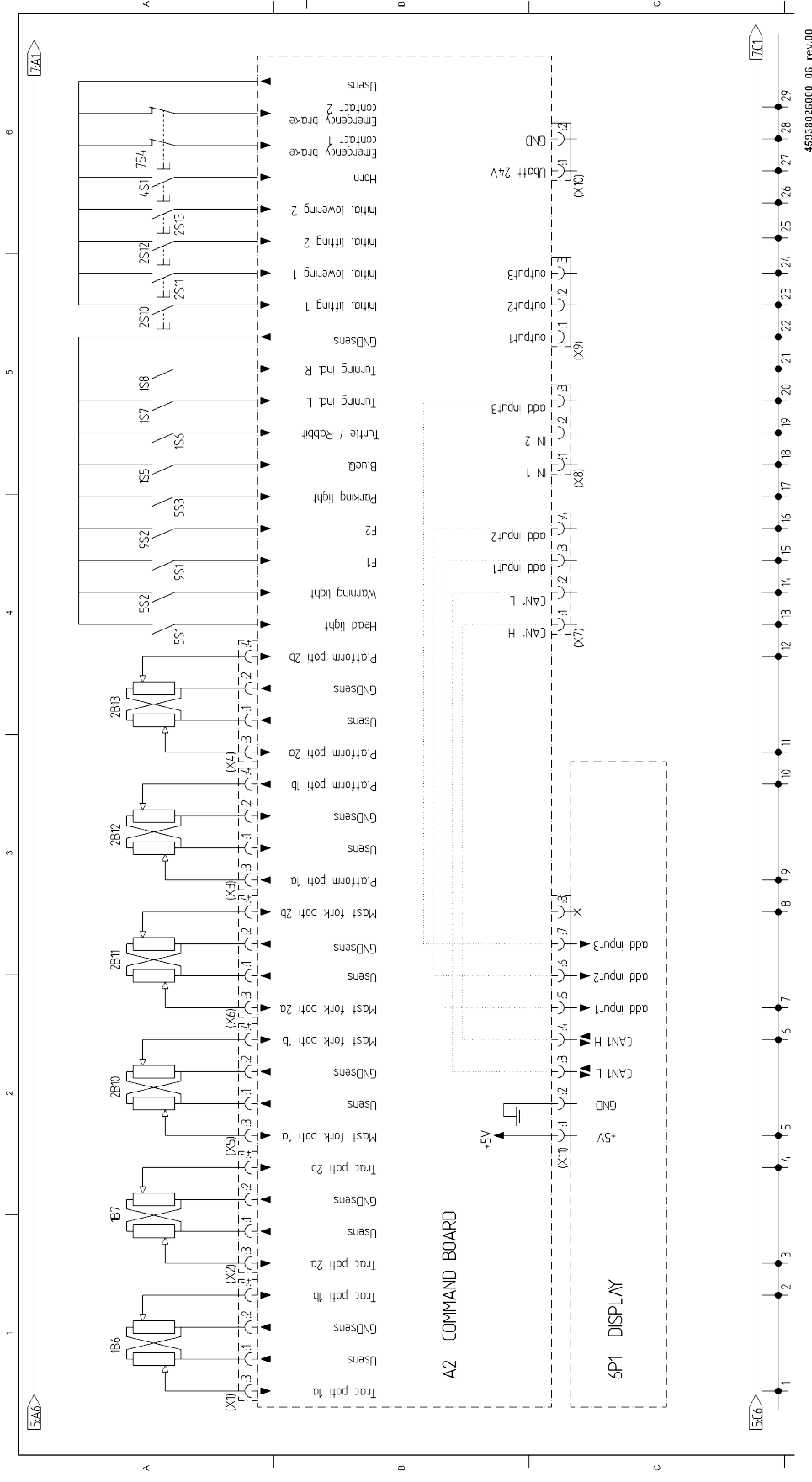
- Please note: If there is no response to CLICKING the link, please download this PDF first and then click on it.

CLICK HERE TO **DOWNLOAD** THE COMPLETE MANUAL



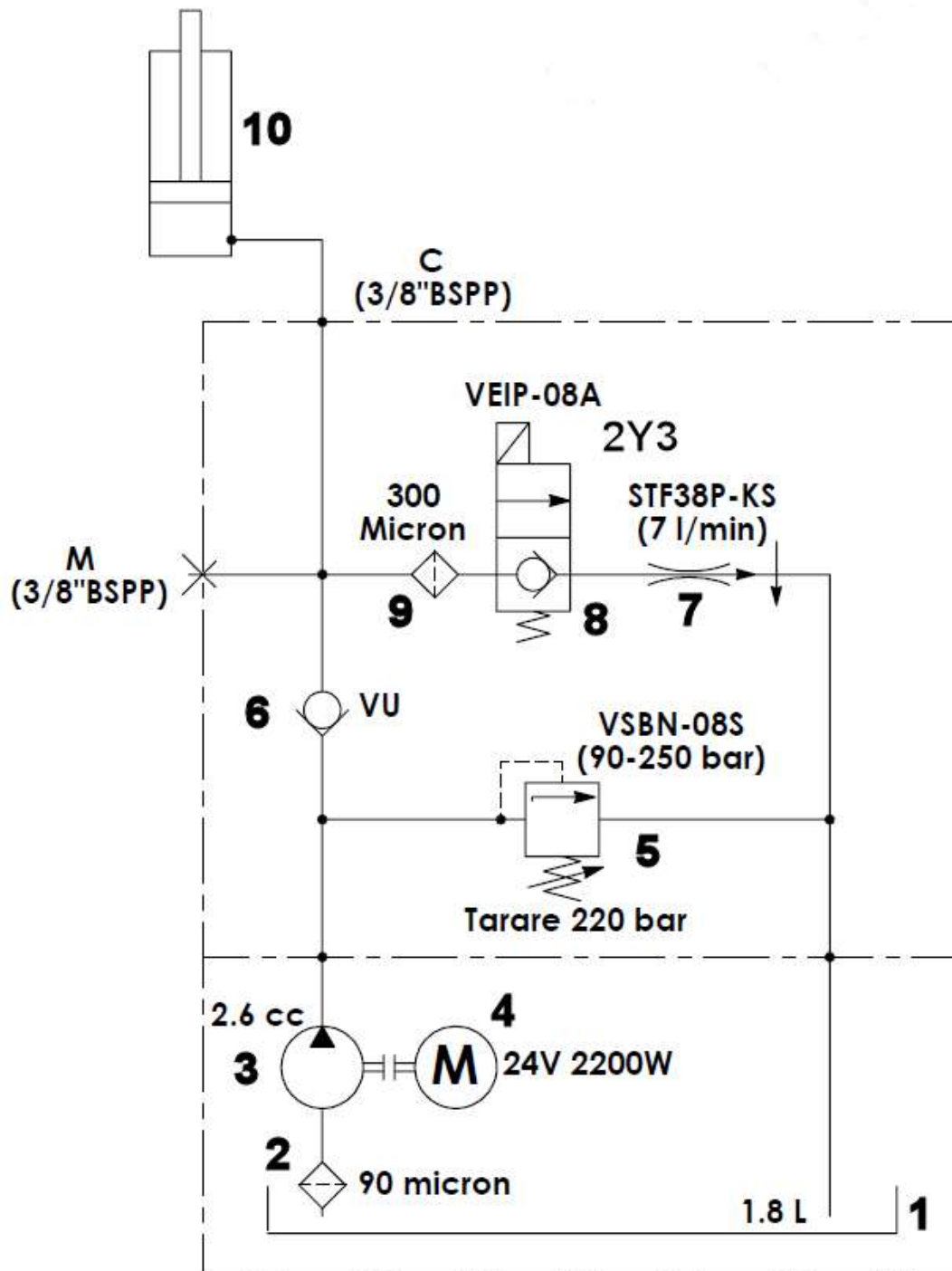


Electrical connection diagram - Sheet 6



- |      |   |     |                                      |
|------|---|-----|--------------------------------------|
| A2   | Cockpit electric circuit diagram (1-29)                       | 4S1 | Horn button (27)                     |
| 1B6  | Drive potentiometer 1 (1-2)                                   | 5S1 | Upper lights switch (13)             |
| 1B7  | Drive potentiometer 2 (3-4)                                   | 5S2 | Flashing lights switch (14)          |
| 2B10 | Fork lifting/lowering potentiometer 1 (5-6)                   | 5S3 | Parking lights switch (17)           |
| 2B11 | Fork lifting/lowering potentiometer 2 (7-8)                   | 7S4 | Emergency stop button (28-29)        |
| 2B12 | Elevating step plate lifting/lowering potentiometer 1 (9-10)  | 9S1 | F1 button (15)                       |
|      |   | 9S2 | F2 button (16)                       |
| 2B13 | Elevating step plate lifting/lowering potentiometer 2 (11-12) | X11 | 4-pin JAE MX19 connector (1-2)       |
|      |   | X12 | 4-pin JAE MX19 connector (3-4)       |
|      |   | X3  | 4-pin JAE MX19 connector (9-10)      |
|      |   | X4  | 4-pin JAE MX19 connector (11-12)     |
|      |   | X5  | 4-pin JAE MX19 connector (5-6)       |
|      |   | X6  | 4-pin JAE MX19 connector (7-8)       |
|      |   | X7  | 4-pin JAE MX19 connector (13-16)     |
|      |   | X8  | 4-pin JAE MX19 connector (18-20)     |
|      |   | X9  | 4-pin JAE MX19 connector (22-24)     |
|      |   | X10 | 4-pin JAE MX19 connector (27-28)     |
|      |   | X11 | 8-pin Molex Microfit connector (5-8) |

Hydraulic connection diagram - OPX 20-25-Plus - Fixed step plate - Controller code 0009810965



- |     |                       |      |                         |
|-----|-----------------------|------|-------------------------|
| (1) | 1.0-litre oil tank    | (6)  | Non-return valve        |
| (2) | Oil filter            | (7)  | Filter                  |
| (3) | 2,6 cc lift pump      | (8)  | Lowering solenoid valve |
| (4) | 2,2 kW pump motor     | (9)  | Flow restrictor         |
| (5) | Pressure relief valve | (10) | Column                  |

CLICK HERE TO **DOWNLOAD** THE COMPLETE MANUAL

- Thank you very much for reading the preview of the manual.
- You can download the complete manual from: [www.heydownloads.com](http://www.heydownloads.com) by clicking the link below



- Please note: If there is no response to CLICKING the link, please download this PDF first and then click on it.

CLICK HERE TO **DOWNLOAD** THE COMPLETE MANUAL