



# **J1 FRONT LINKAGE**

# **J2 FRONT POWER TAKE-OFF INSTALLATION MAILLEUX**

# **J3 FRONT POWER TAKE-OFF INSTALLATION ZUIDBERG**

**Technical support**

**Axion 850-810**

**Diagnostics – Chapter J**

**00 1136 265 1 – Edition 10.2010**

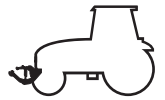
CLICK HERE TO **DOWNLOAD** THE COMPLETE MANUAL

- Thank you very much for reading the preview of the manual.
- You can download the complete manual from: [www.heydownloads.com](http://www.heydownloads.com) by clicking the link below

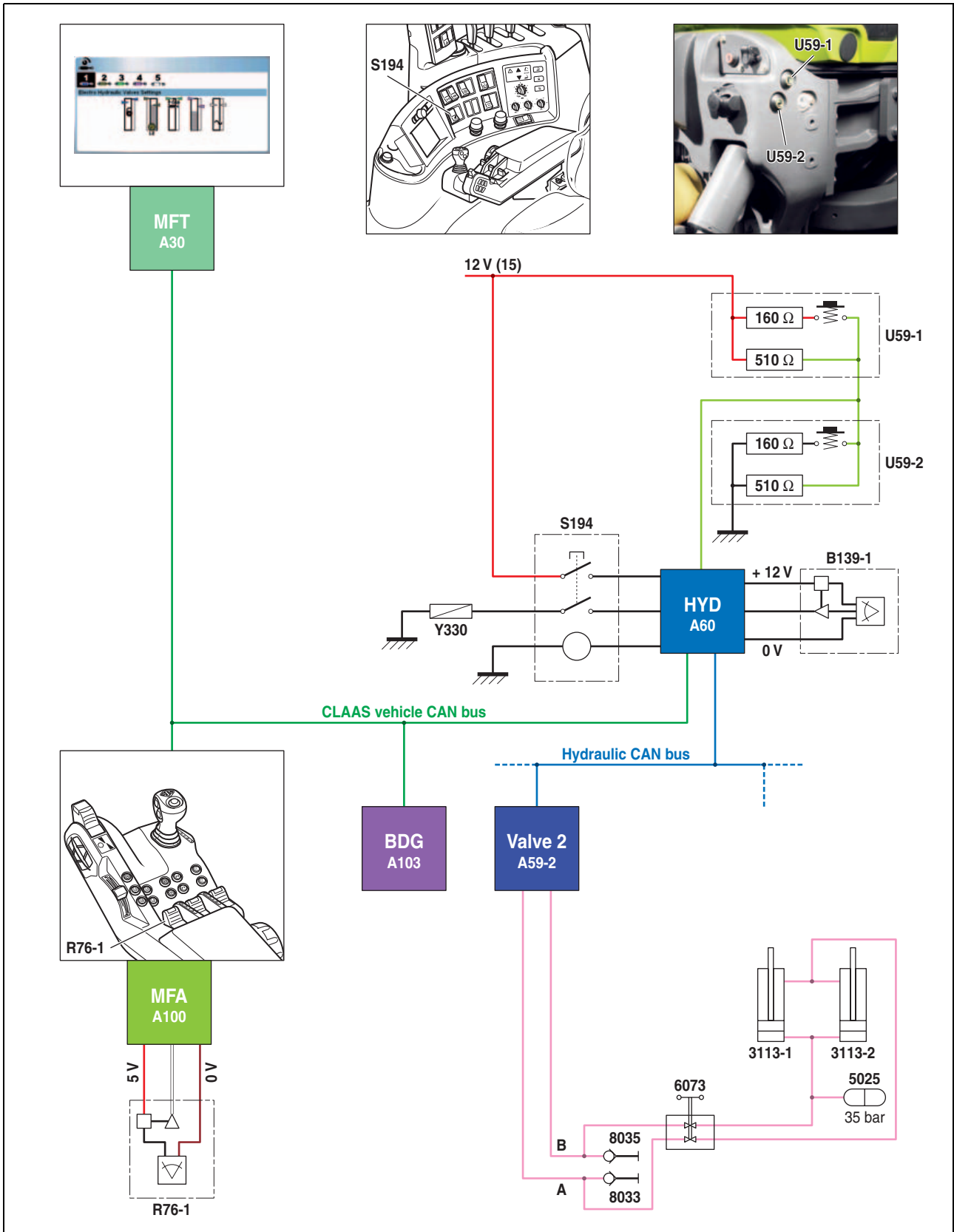


- Please note: If there is no response to CLICKING the link, please download this PDF first and then click on it.

CLICK HERE TO **DOWNLOAD** THE COMPLETE MANUAL



## General description (Up to no.A09001559)



415hsm05

Fig. 5



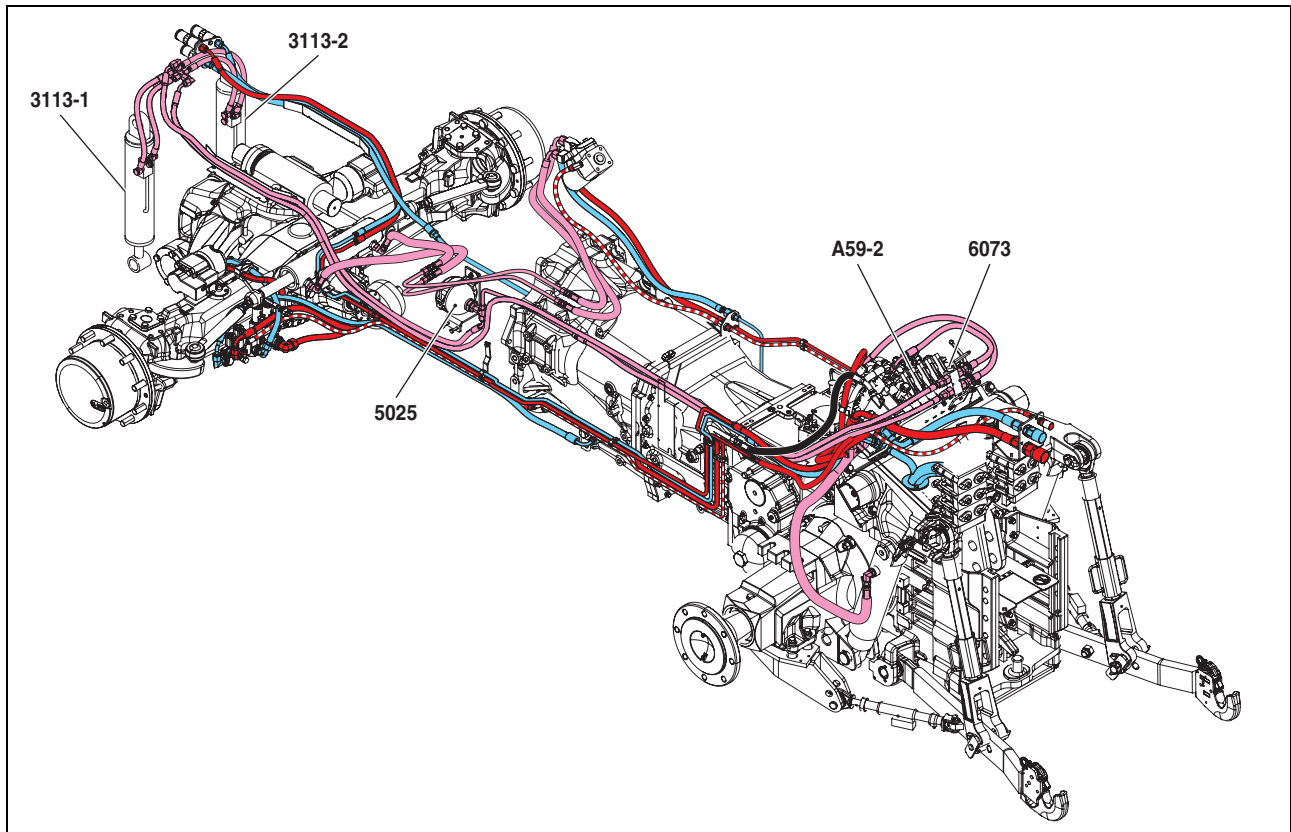
## Hydraulic part (Up to no.A09001559)

The front hydraulic lifting system becomes operational when the front lifting isolation valve is open. The hydraulic jacks are supplied in double effect by the "A59-2"

electrohydraulic distributor. The accumulator dampens the oscillations due to the tool transported.

**Important: Do not use the "8033", "8035" rear couplings when front lifting is used.**

### Component layout

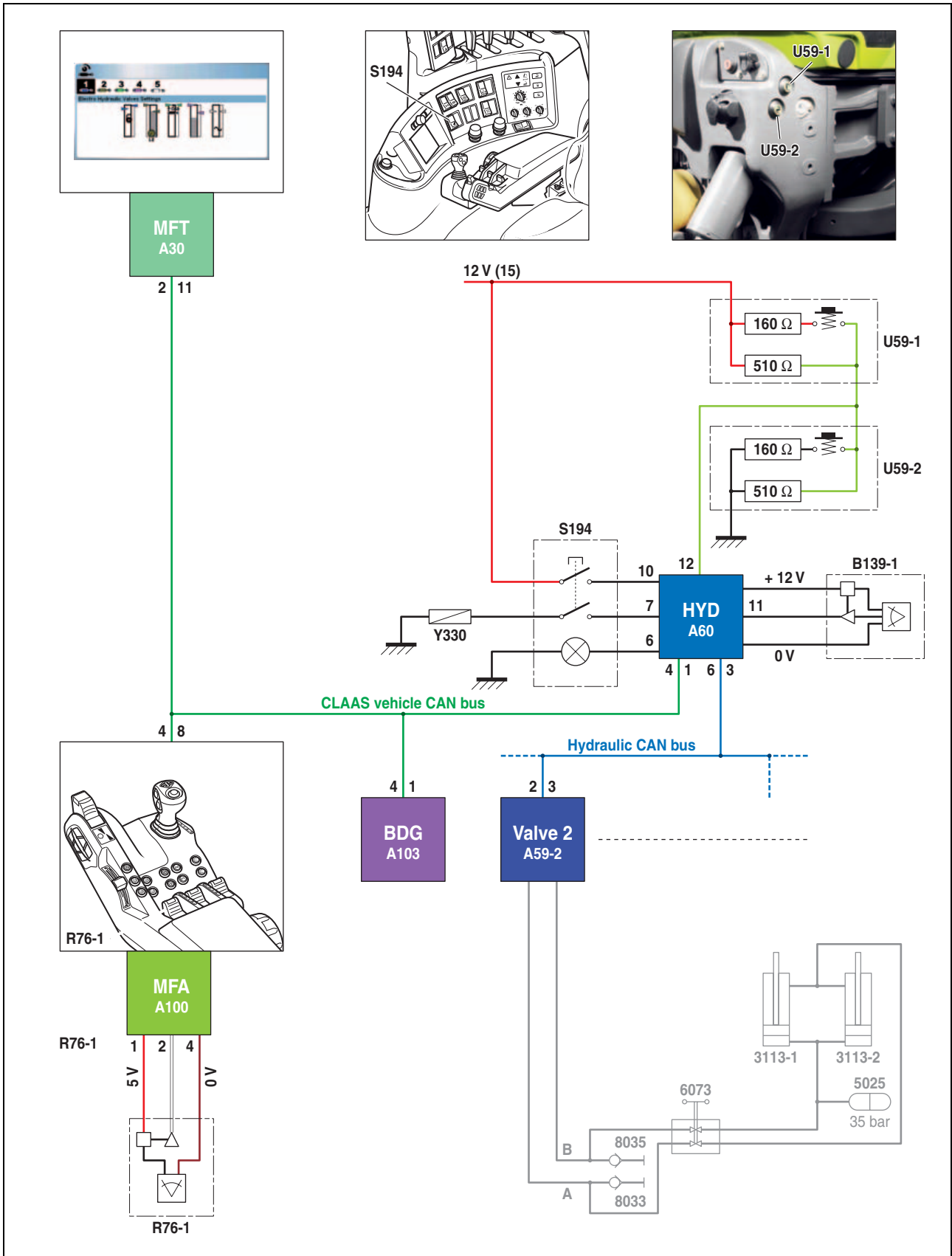


415hsm14

Fig. 18



## Electronic components (Up to no.A09001559)

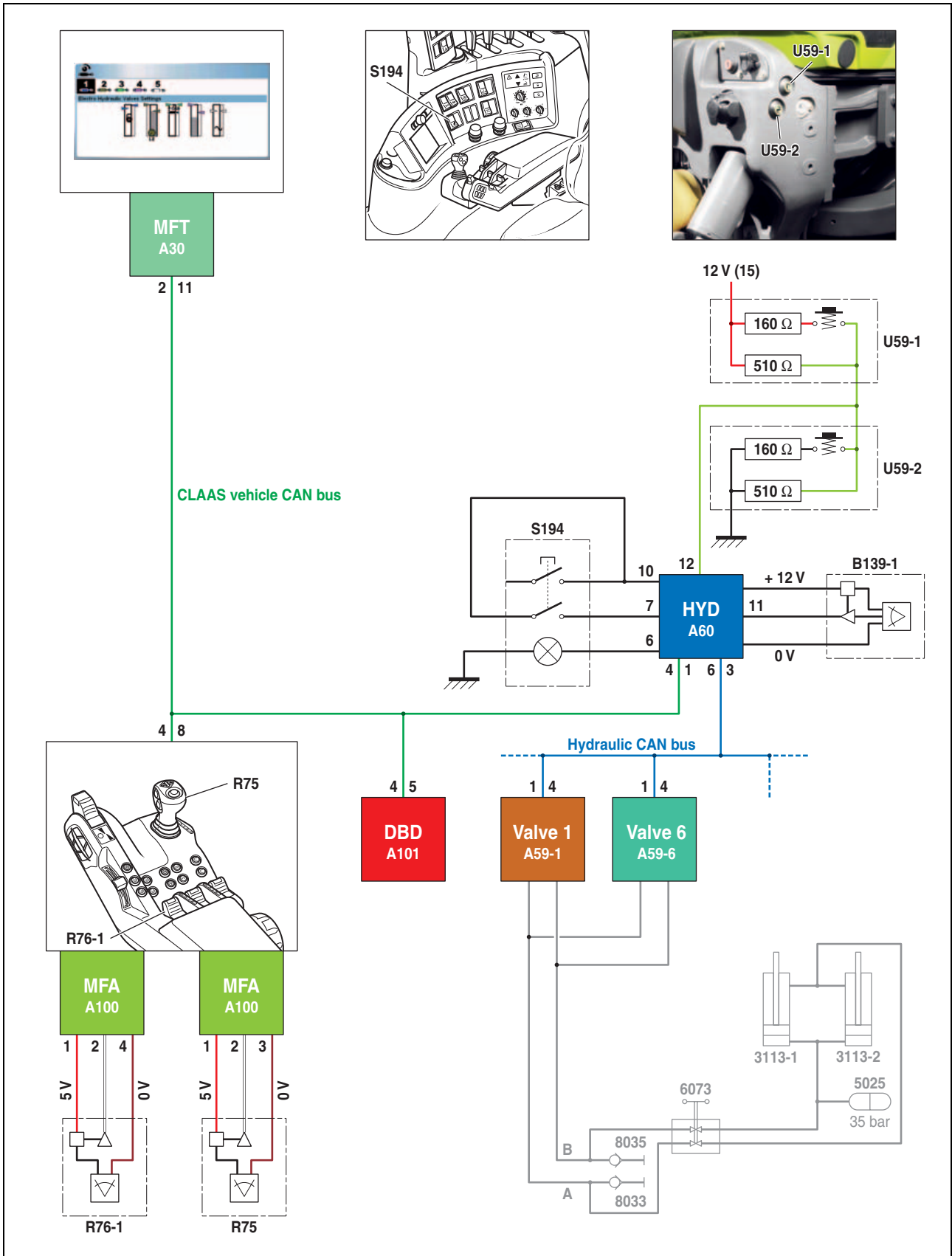


415hsm02

Fig. 22



## Electronic components (From No.A09001560)



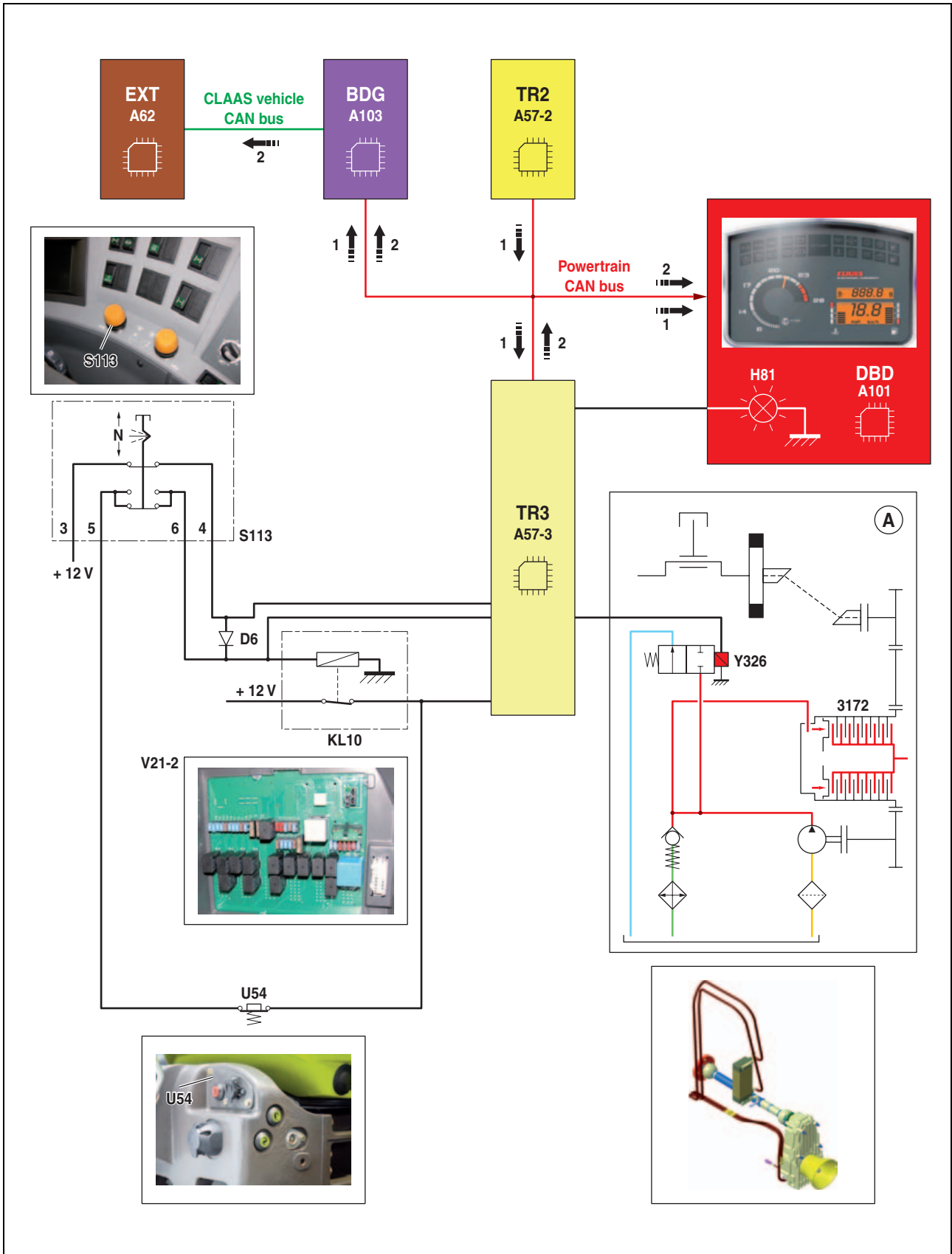
415hsm25

Fig. 34



## General description

### Electronic architecture "A", "B" or "C"

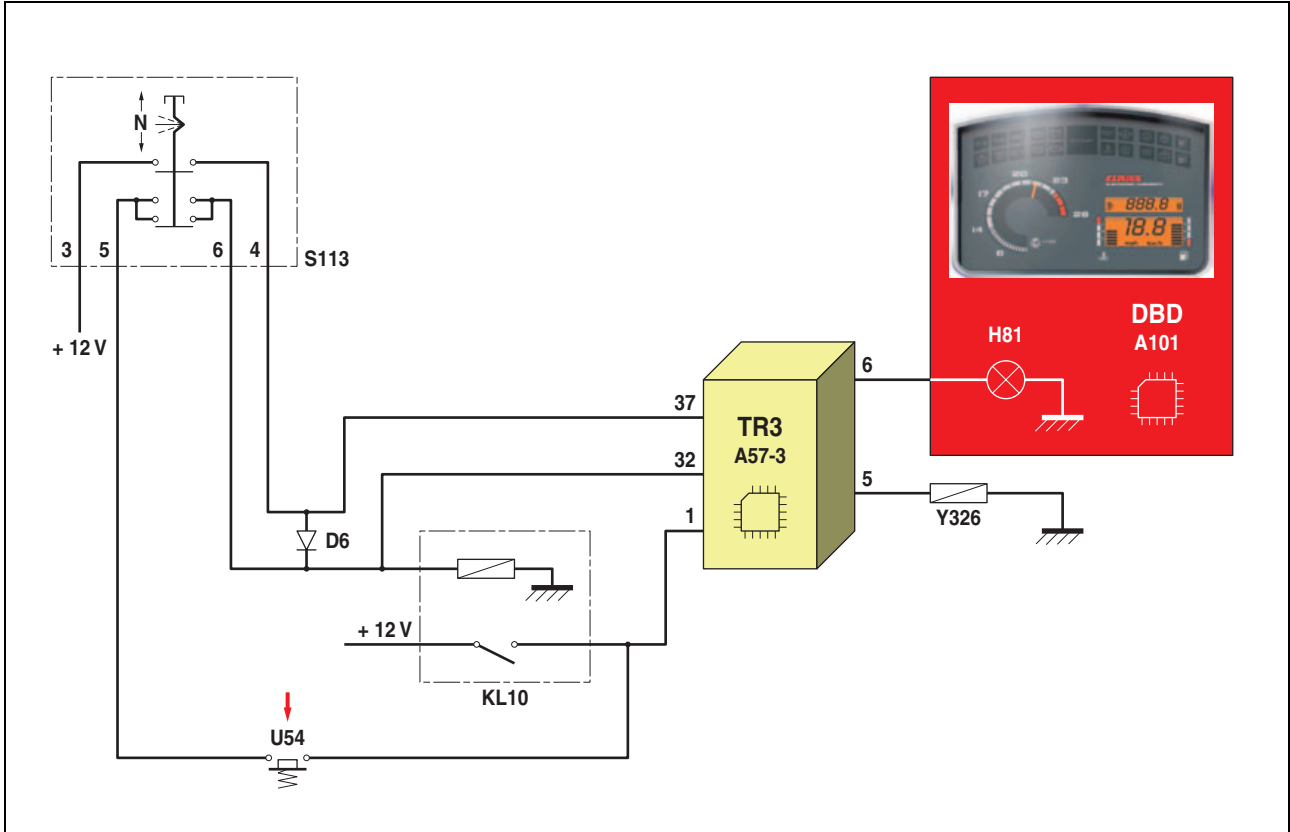




## Electronic components

Disengaging the PTO (Pulse on the "S113" cab contact or "U54" external contact).

### Electronic architecture "A", "B" or "C"



424hsm15

Fig. 13



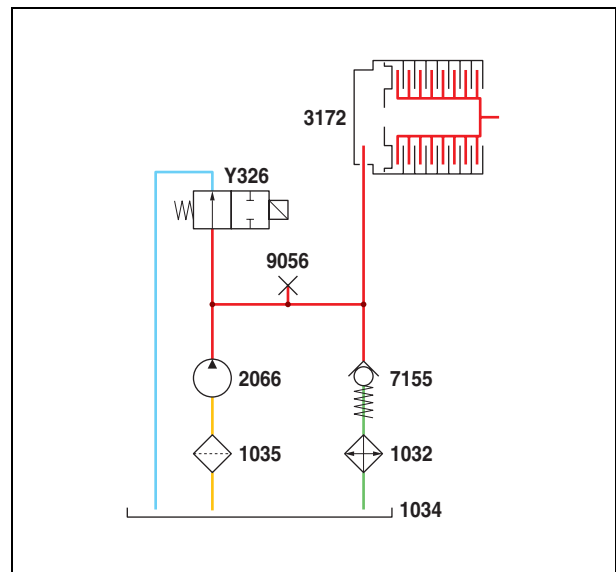
## Hydraulic piloting part

### Description

The power take-off unit is fitted with:

- A hydraulic pump with pressure restricter built into the PTO housing providing hydraulic utilities.
- A multiple disc oil bath clutch positioned on the outlet shaft of the unit.
- An oil cooler integrated to the hydraulic circuit of the power take-off unit fastened with all other coolers in front of the engine.
- An On/Off solenoid valve controlling the clutch.
- A strainer filtering the oil of the unit.

Hydraulic diagram (Rest state)



424hsm17

Fig. 22

### Technical specifications

Front power take-off unit	
Quantity of oil casing + cooler	1,8 L
Pressure (in clutched status)	25 bar
Oil type	CLAAS Agrishift GA12 (API GL4-Gima M1145-ISO HV 68)

### Component layout

#### Description

- |   |  |
|---|--|
| <b>1032</b> Cooler.                           | <b>3172</b> Multiple disc clutch.          |
| <b>1034</b> Reservoir (Power take-off cover). | <b>7155</b> Hydraulic valve 40 bar.        |
| <b>1035</b> Strainer.                         | <b>9056</b> Check point (Clutch pressure). |
| <b>2066</b> Hydraulic pump.                   | <b>Y326</b> Solenoid valve.                |



---

## General description

### Description

- |  |   |
|--|---|
| <b>1</b> Engine speed information.                                   | <b>2066</b> Hydraulic pump.               |
| <b>2</b> Information on engaging/non engaging of the power take off. | <b>7155</b> Pressure limiter, 20 bar.     |
| <b>3</b> Return from radiator.                                       | <b>A</b> Front power take-off unit.       |
| <b>4</b> Cooler power.   | <b>A57-2</b> "TR2" transmission module.   |
| <b>5</b> Low pressure check point.                                   | <b>A57-3</b> "TR3" transmission module.   |
| <b>6</b> Command pressure check point.                               | <b>A101</b> Instrument panel module.      |
| <b>7</b> Clutch supply.  | <b>D6</b> Diode.                          |
| <b>8</b> Output shaft.   | <b>KL10</b> Front power take-off relay.   |
| <b>9</b> Input shaft.  | <b>S113</b> Front power take-off command. |
| <b>1032</b> Oil cooler.  | <b>U54</b> External stop command.         |
| <b>1035</b> Suction strainer.  | <b>Y326</b> Front PTO solenoid valve.     |

CLICK HERE TO **DOWNLOAD** THE COMPLETE MANUAL

- Thank you very much for reading the preview of the manual.
- You can download the complete manual from: [www.heydownloads.com](http://www.heydownloads.com) by clicking the link below



- Please note: If there is no response to CLICKING the link, please download this PDF first and then click on it.

CLICK HERE TO **DOWNLOAD** THE COMPLETE MANUAL