

Circuit Diagrams

01

All Terrain Crane

Model

AR-1000M-1

Applicable Serial No. GA5002 -

CLICK HERE TO **DOWNLOAD** THE COMPLETE MANUAL

- Thank you very much for reading the preview of the manual.
- You can download the complete manual from: www.heydownloads.com by clicking the link below



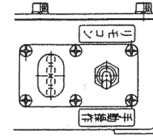
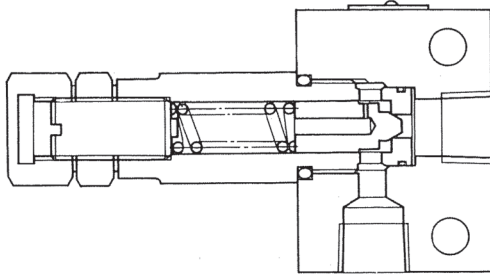
- Please note: If there is no response to CLICKING the link, please download this PDF first and then click on it.

CLICK HERE TO **DOWNLOAD** THE COMPLETE MANUAL

Adjustment (pressure)

5. Relief valve

(for jib extension circuit pressure reduction, PR11)



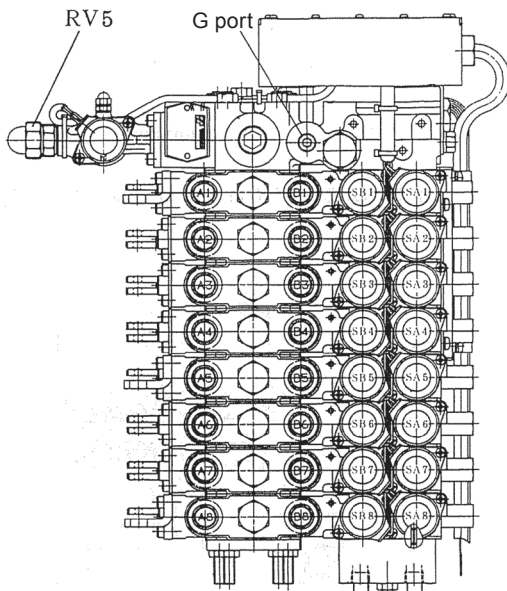
- After fully retracting the counterweight mounting/dismounting cylinder, shift the counterweight cylinder telescoping switch to “raising” side to adjust the pressure.

Pump speed: MAX (2000 rpm)

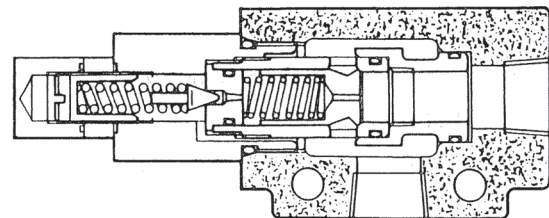
- Shift the boom/jib selector switch to the “jib tilt” position.
- Fully extend the jib telescoping cylinder.
- Move the jib operation lever to the jib extending side to check the pressure value shown on the multi-display.

Pump speed: MAX (2000 rpm)

6. Remote control valve (main relief valve, RV5(C))



7. Relief valve (RV7 for counterweight rotator circuit)



- Install the pressure gauge to the G port of the remote control valve.
- Fully extend the counterweight mounting/dismounting cylinder.
- Shift the counterweight lock/release switch to the lock side and measure the pressure after the counterweight lock pin (counterweight mounting/dismounting cylinder rod section) has moved to the lock position.

Pump speed: IDL (600 rpm)

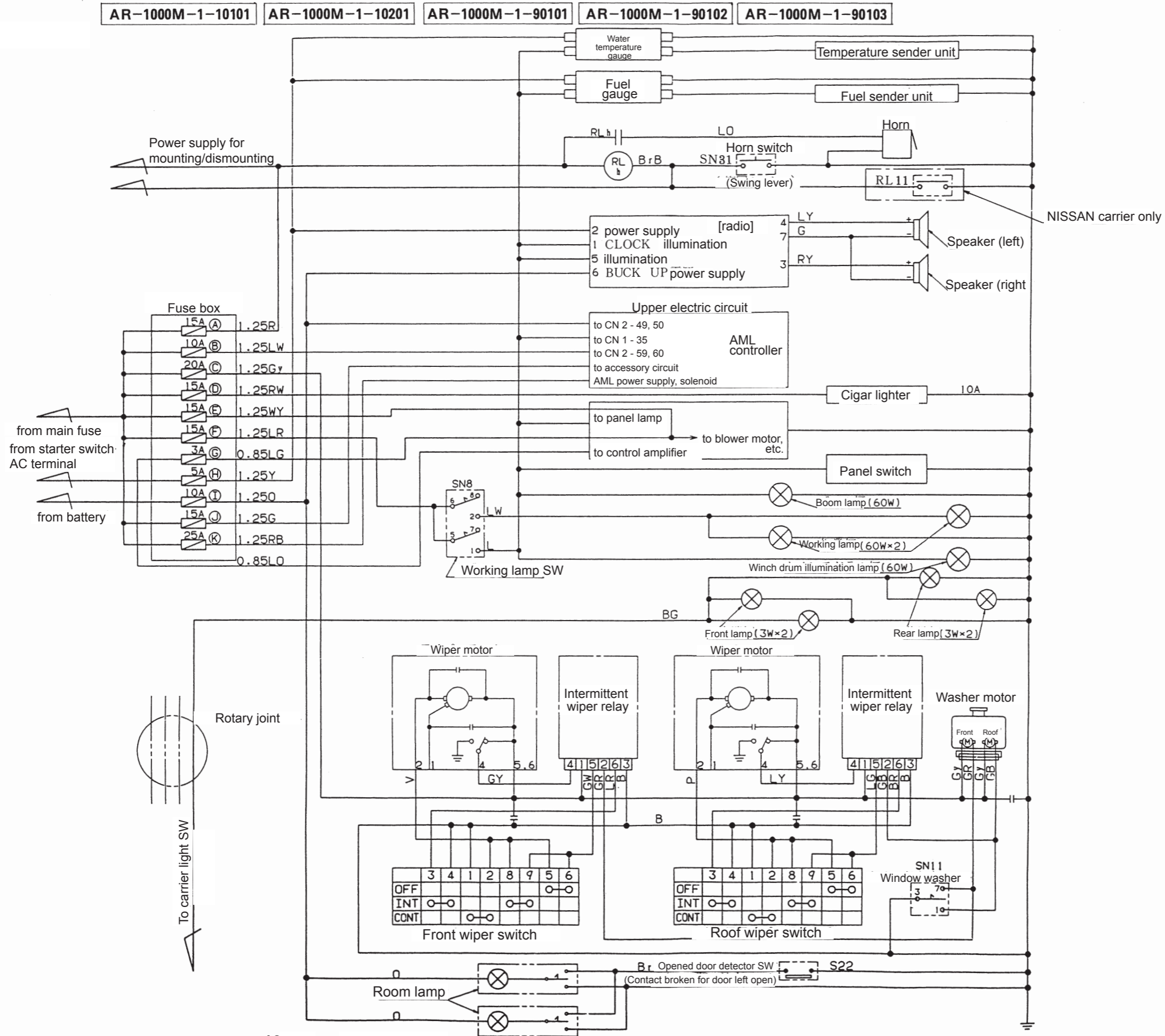
- Install the pressure gauge to the G port of the remote control valve.
- Shift the crane mounting/dismounting switch to “working” side.
- Shift the RC computer selector switch of the remote control device to the “manual” side.

Contents

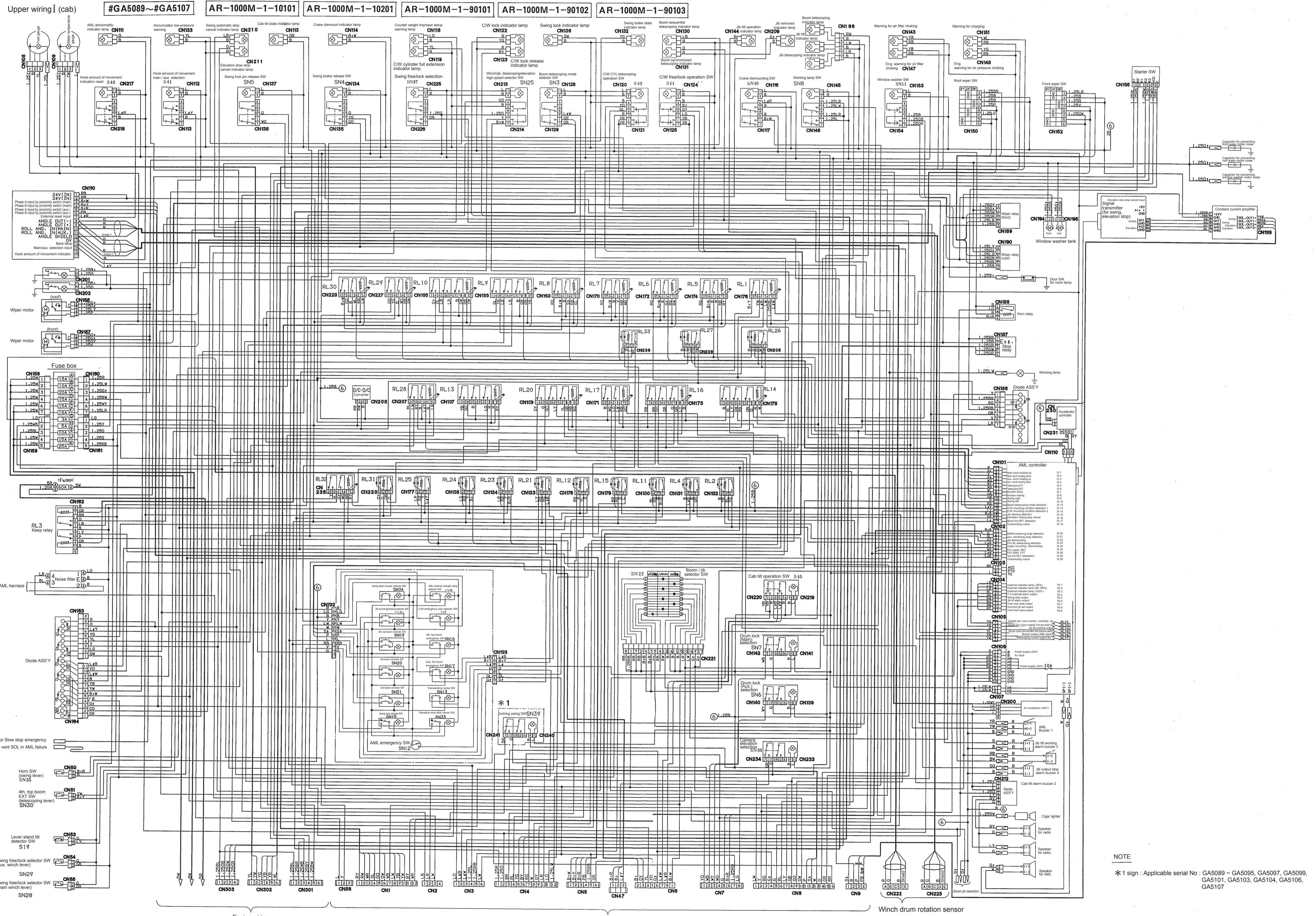
Z-1	Hydraulic Circuit (Upper)	1
Z-3	Electric Circuit (Upper).....	5
Z-4	Electric Circuit (Crane electrical equipment) ...	10
Z-5	Electric Circuit (Electric circuit for mounting/ dismounting revolving superstructure, counterweight).....	11
Z-6	Electric Circuit (Engine electric circuit)	14
Z-7	Electric Circuit (Lower)	15
Z-8	Electric Circuit (Air conditioner)	17
Z-9	Electric Circuit (Upper wiring 1 (cab)).....	19
Z-10	Electric Circuit (Upper wiring 2 (swing table))	25
Z-11	Electric Circuit (Engine wiring).....	27

Electric Circuit

Crane electrical equipment circuit



Electric Circuit



NOTE
 * 1 sign : Applicable serial No : GA5089 ~ GA5095, GA5097, GA5099, GA5101, GA5103, GA5104, GA5106, GA5107

CLICK HERE TO **DOWNLOAD** THE COMPLETE MANUAL

- Thank you very much for reading the preview of the manual.
- You can download the complete manual from: www.heydownloads.com by clicking the link below



- Please note: If there is no response to CLICKING the link, please download this PDF first and then click on it.

CLICK HERE TO **DOWNLOAD** THE COMPLETE MANUAL